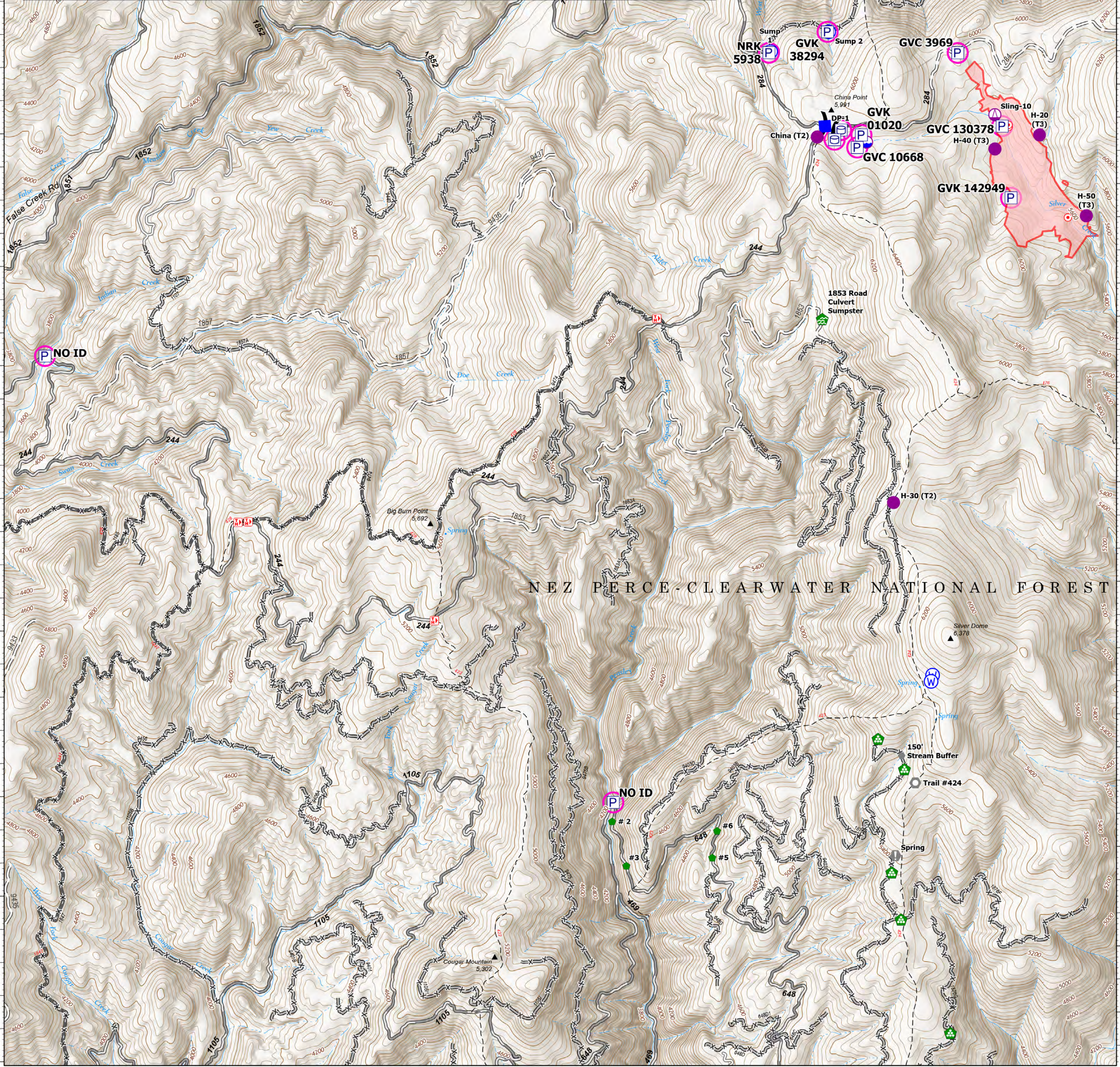


Incident Name	Feature	Trackable ID	Property Status	Serial Number	Latitude WGS84 DDM	Longitude WGS84 DDM
Midnight	Pump	GVC 130378	In Field		45° 55.965' N	115° 45.646' W
Midnight	Water Tank		In Field		45° 55.967' N	115° 46.884' W
Midnight	Pump	GVK 01020	In Field		45° 55.896' N	115° 46.640' W
Midnight	Water Tank		In Field		45° 56.336' N	115° 45.958' W
Midnight	Pump	GVK 38294	In Field		45° 56.453' N	115° 46.894' W
Midnight	Pump	GVC 10668	In Field		45° 55.891' N	115° 46.607' W
Midnight	Pump	GVC 3969	In Field		45° 56.336' N	115° 45.958' W
Midnight	Water Tank		In Field		45° 55.967' N	115° 46.884' W
Midnight	Pump	NRK 5938	In Field		45° 56.352' N	115° 47.319' W
Midnight	Pump	GVK 142949	In Field		45° 55.604' N	115° 45.590' W
Midnight	Pump	NO ID	In Field		45° 54.880' N	115° 52.568' W
Midnight	Pump	NO ID	In Field		45° 52.594' N	115° 48.522' W



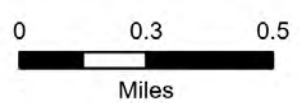
NEZ PERCE-CLEARWATER NATIONAL FOREST

### Accountable Property

Midnight  
ID-NCF-000370  
179 acres

08/01/2023

Fire perimeter updated from  
Acres from IR on 7/17/2023 @ 2035



1 inch equals 5 miles Scale: 1:24,000

- Pump
- Water Tank
- In Use - Fire Management
- Dip Site
- Helispot
- Sling Site
- Division Break
- Drop Point
- Hot Spot - Spot Fire
- Value at Risk
- Other
- Landmark
- Water Development or Draft Site
- Repair Point
- Landing or Log Deck
- Water Source
- Wildfire Daily Fire Perimeter
- Gravel Road
- Dirt Road
- Unimproved Road
- Forest Service Roads Closed



NR Remote Incident Support  
7/31/2023 1936  
North American 1983 Datum.  
LatLong Grid

Accountable Property