

Operations Div-G

Midnight
ID-NCF-000370
179 acres
08/04/2023

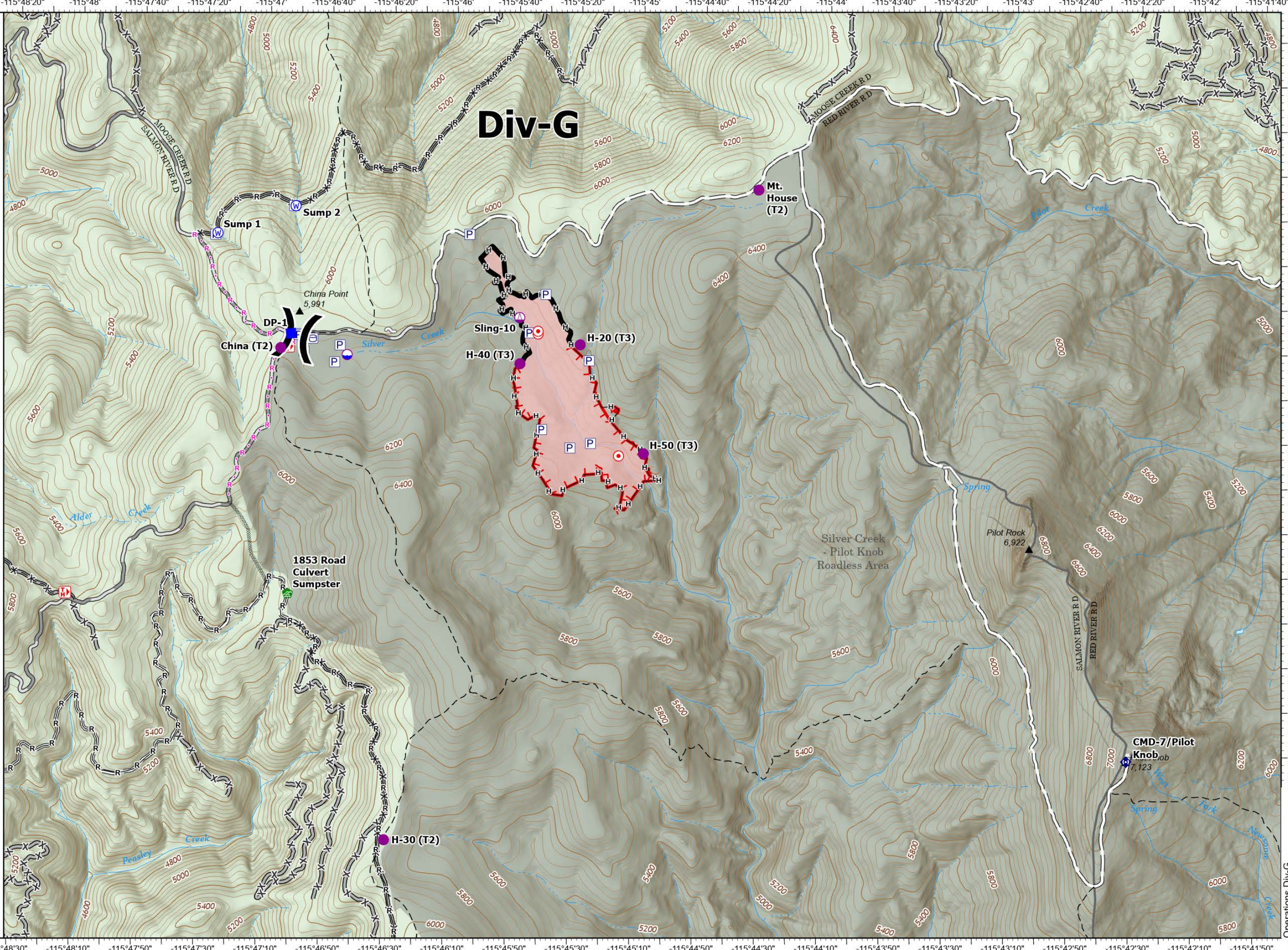
Fire perimeter updated from
Acres from IR on 7/17/2023 @ 2035

- Label Point
- Dip Site
- Helispot
- ⊕ Sling Site
- ⌋ Division Break
- Drop Point
- Hot Spot - Spot Fire
- 🏠 Water Development or Draft Site
- 📡 Repeater
- Ⓜ Water Source
- ⋯ Completed Dozer Line
- Completed Hand Line
- Completed Road as Line
- Planned Road as Line
- ▬ Contained
- ▬ Uncontained
- 🔥 Wildfire Daily Fire Perimeter
- 🛣 Gravel Road
- 🛤 Unimproved Road
- 🚫 Forest Service Roads Closed
- 🌲 USFS Roadless Areas
- 🌲 Forest Service Land
- ▲ Summit; Gap
- 🏠 Trailhead
- 🛣 Secondary Dirt
- 🛤 Trail
- 📏 Administrative FS Boundary
- 📏 Ranger District Boundary



1 inch equals 5 miles
Scale: 1:24,000

NR Remote Incident Support
8/3/2023 1852
North American 1983
Datum: LatLong Grid



Div-G

Mt. House (T2)

Sump 1

Sump 2

China (T2)

China Point
5,991

Sling-10

H-40 (T3)

H-20 (T3)

H-50 (T3)

1853 Road
Culvert
Sumpster

Silver Creek
- Pilot Knob
Roadless Area

Pilot Rock
6,922

CMD-7/Pilot
Knob
7,123

H-30 (T2)