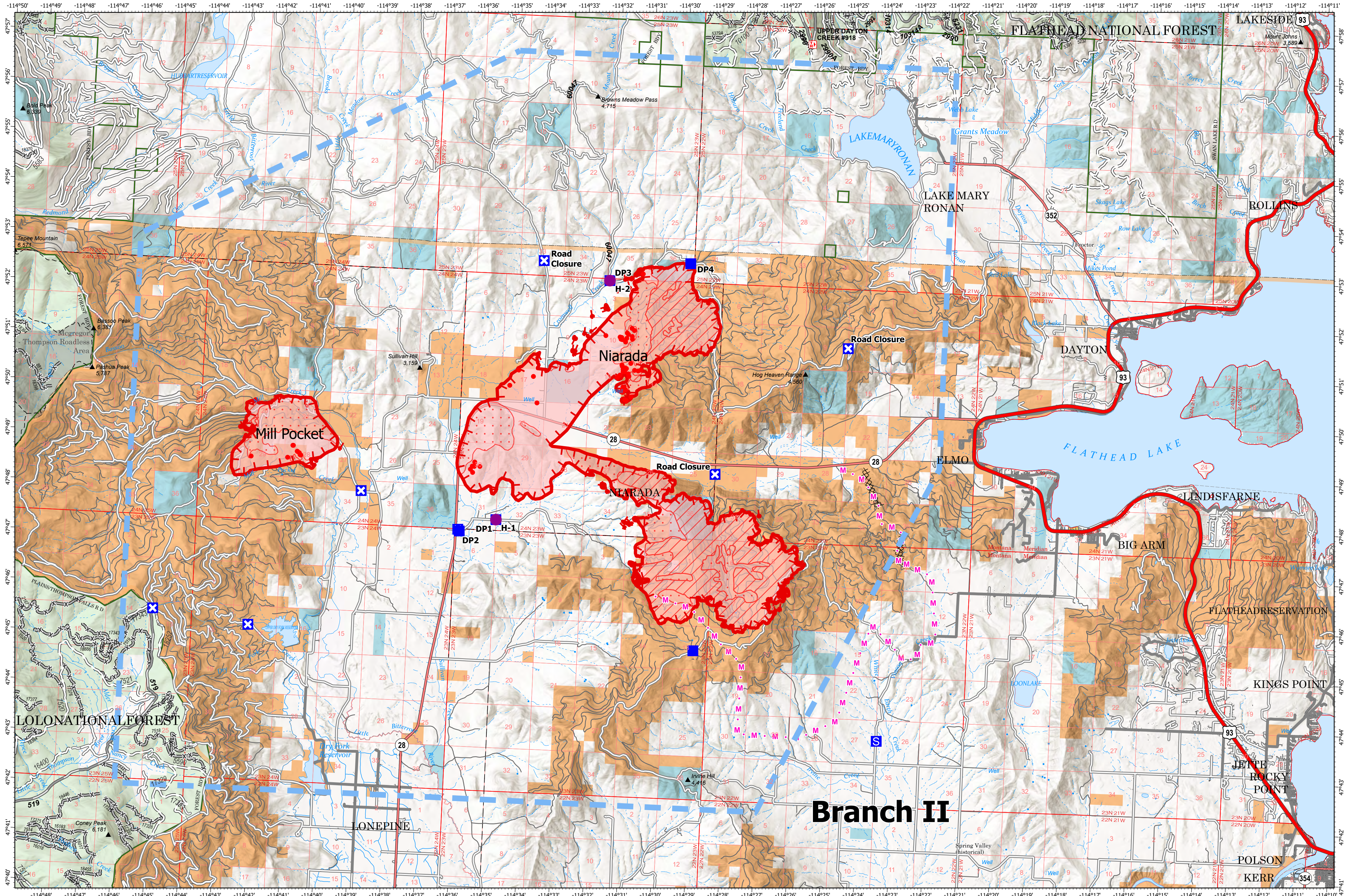


# OPERATIONS MAP - NIARADA / MILL POCKET

8/3/2023



**Niarada**  
**MT-FHA-000100**  
 Fire Perimeter as of  
 08/02/2023 2134 hrs  
 13,686 Acres

**Mill Pocket**  
**MT-FHA-000101**  
 Fire Perimeter as of  
 08/02/2023 2134 hrs  
 1,929 Acres

<ul style="list-style-type: none"> <li><span style="color: blue;">■</span> Helispot</li> <li><span style="color: blue;">■</span> Drop Point</li> <li><span style="color: blue;">■</span> Closure</li> <li><span style="color: blue;">■</span> Staging Area</li> <li><span style="color: red;">●</span> IR Isolated Heat Source</li> <li><span style="color: red;">●</span> Completed Dozer Line</li> </ul>	<ul style="list-style-type: none"> <li><span style="color: blue;">—</span> Planned Mixed Construction Line</li> <li><span style="color: blue;">—</span> Temporary Flight Restriction</li> <li><span style="color: red;">—</span> Wildfire Daily Fire Perimeter</li> <li><span style="color: red;">—</span> IR Heat Perimeter</li> <li><span style="color: red;">—</span> IR Intense Heat</li> <li><span style="color: red;">—</span> IR Scattered Heat</li> </ul>	<ul style="list-style-type: none"> <li><span style="color: red;">—</span> Trailhead</li> <li><span style="color: red;">—</span> Primary Highway</li> <li><span style="color: red;">—</span> Secondary Highway</li> <li><span style="color: red;">—</span> Secondary Paved</li> <li><span style="color: red;">—</span> Secondary Dirt</li> </ul>	<ul style="list-style-type: none"> <li><span style="color: grey;">—</span> Secondary Dirt</li> <li><span style="color: grey;">—</span> HIFLD Plus GTAC Pedestrian Path</li> <li><span style="color: grey;">—</span> Trail</li> <li><span style="color: grey;">—</span> National Designated Trail</li> <li><span style="color: grey;">—</span> Dirt Road</li> </ul>	<ul style="list-style-type: none"> <li><span style="color: grey;">—</span> Unimproved Road</li> <li><span style="color: grey;">—</span> Runway</li> <li><span style="color: grey;">—</span> Administrative FS Boundary</li> <li><span style="color: grey;">—</span> Ranger District Boundary</li> <li><span style="color: grey;">—</span> Indian Reservation</li> <li><span style="color: grey;">—</span> State Boundary</li> </ul>	<ul style="list-style-type: none"> <li><span style="color: grey;">—</span> County Boundary</li> <li><span style="color: grey;">—</span> Incorporated Place</li> <li><span style="color: grey;">—</span> Census Designated Place</li> <li><span style="color: grey;">—</span> Township</li> <li><span style="color: grey;">—</span> Section</li> <li><span style="color: grey;">—</span> Gaging Station</li> </ul>	<ul style="list-style-type: none"> <li><span style="color: blue;">●</span> Spring/Seep</li> <li><span style="color: blue;">●</span> Waterfall</li> <li><span style="color: blue;">●</span> Well</li> <li><span style="color: blue;">●</span> Nonearthen Shore</li> <li><span style="color: blue;">●</span> Lake / Pond</li> </ul>	<ul style="list-style-type: none"> <li><span style="color: blue;">—</span> Lake / Pond (Intermittent)</li> <li><span style="color: blue;">—</span> Reservoir</li> <li><span style="color: blue;">—</span> Stream/River; Artificial Path</li> <li><span style="color: blue;">—</span> Canal / Ditch</li> <li><span style="color: blue;">—</span> Pipeline Underground</li> <li><span style="color: blue;">—</span> Stream/River Intermittent</li> </ul>	<ul style="list-style-type: none"> <li><span style="color: grey;">—</span> USFS Roadless Areas</li> <li><span style="color: grey;">—</span> American Indian Lands</li> <li><span style="color: grey;">—</span> Forest Service Land</li> <li><span style="color: grey;">—</span> Bureau of Land Management Lands</li> <li><span style="color: grey;">—</span> State Lands</li> </ul>
--	---	---	--	---	---	---	--	---

