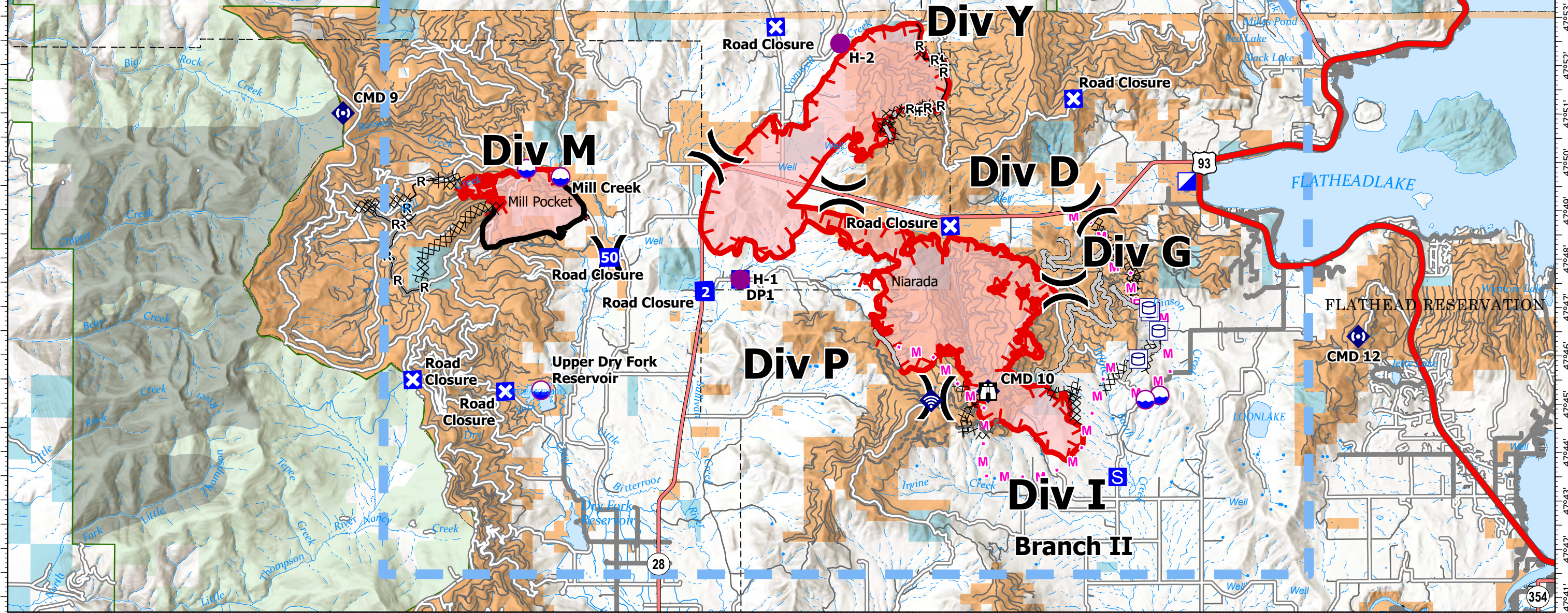


AIR OPERATIONS - NIARADA / MILL POCKET

8/6/2023

-114°57.5' -114°56' -114°54.5' -114°53' -114°51.5' -114°50' -114°48.5' -114°47' -114°45.5' -114°44' -114°42.5' -114°41' -114°39.5' -114°38' -114°36.5' -114°35' -114°33.5' -114°32' -114°30.5' -114°29' -114°27.5' -114°26' -114°24.5' -114°23' -114°21.5' -114°20' -114°18.5' -114°17' -114°15.5' -114°14' -114°12.5' -114°11'

IncidentName	FeatureCategory	Label	Latitude	Longitude
Mill Pocket	Dip Site		47° 49.892' N	114° 41.634' W
Mill Pocket	Dip Site	Mill Creek	47° 49.722' N	114° 40.598' W
Mill Pocket	Dip Site	Upper Dry Fork Reservoir	47° 45.315' N	114° 41.182' W
Niarada	Incident Command Post		47° 49.633' N	114° 21.383' W
Niarada	Dip Site		47° 45.210' N	114° 22.231' W
Niarada	Dip Site		47° 45.122' N	114° 22.662' W
Niarada	Repeater	CMD 10	47° 45.300' N	114° 27.484' W
Niarada	Repeater	CMD 12	47° 46.416' N	114° 16.135' W
Niarada	Repeater	CMD 9	47° 51.030' N	114° 47.277' W
Niarada	Helispot	H-1	47° 47.610' N	114° 35.077' W
Niarada	Helispot	H-2	47° 52.489' N	114° 32.021' W



Niarada
MT-FHA-000100
 Fire Perimeter as of
 08/05/2023 1700 hrs
 17,514 Acres

Mill Pocket
MT-FHA-000101
 Fire Perimeter as of
 08/04/2023 1645 hrs
 2,135 Acres

- Water Tank
- Dip Site
- Helispot
- Division Break
- Incident Command Post
- Drop Point
- Closure
- Staging Area
- Lookout
- Internet Access
- Repeater

- Completed Dozer Line
- Completed Hand Line
- Completed Road as Line
- Planned Mixed Construction Line
- Planned Road as Line
- Access or Improved Road
- Other
- Repair Line
- Temporary Flight Restriction
- Fire Edge (Field Collection)
- Wildfire Daily Fire Perimeter

- Primary Highway
- Secondary Highway
- Secondary Paved
- Secondary Dirt
- Secondary Dirt
- HIFLD Plus GTAC Pedestrian Path
- Runway
- Administrative FS Boundary
- Indian Reservation
- County Boundary
- USFS Roadless Areas
- American Indian Lands
- Forest Service Land
- Bureau of Land Management
- State Lands

Miles 0 1 2