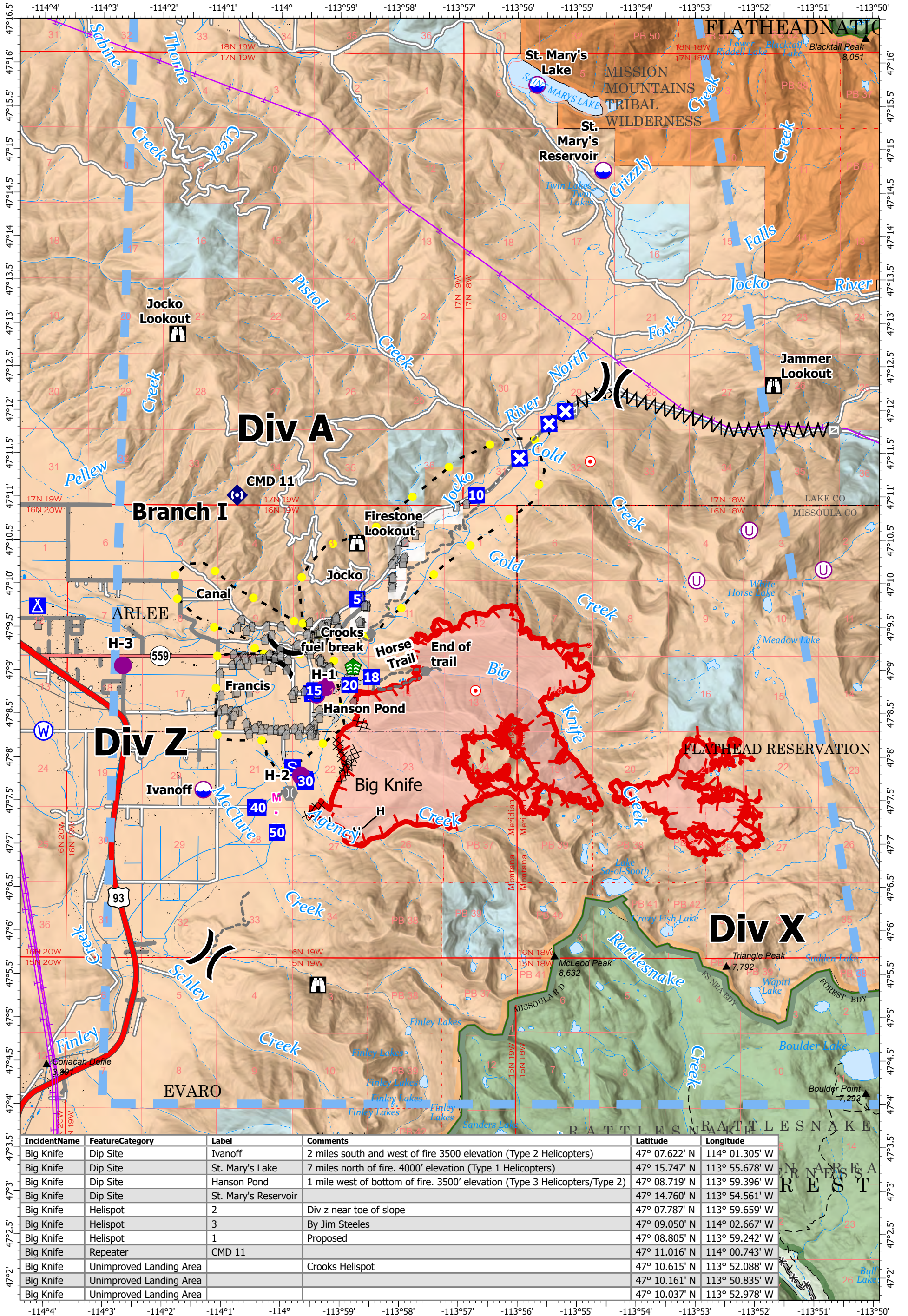


AIR OPERATIONS - BIG KNIFE

8/6/2023



IncidentName	FeatureCategory	Label	Comments	Latitude	Longitude
Big Knife	Dip Site	Ivanoff	2 miles south and west of fire 3500 elevation (Type 2 Helicopters)	47° 07.622' N	114° 01.305' W
Big Knife	Dip Site	St. Mary's Lake	7 miles north of fire. 4000' elevation (Type 1 Helicopters)	47° 15.747' N	113° 55.678' W
Big Knife	Dip Site	Hanson Pond	1 mile west of bottom of fire. 3500' elevation (Type 3 Helicopters/Type 2)	47° 08.719' N	113° 59.396' W
Big Knife	Dip Site	St. Mary's Reservoir		47° 14.760' N	113° 54.561' W
Big Knife	Helispot	2	Div z near toe of slope	47° 07.787' N	113° 59.659' W
Big Knife	Helispot	3	By Jim Steeles	47° 09.050' N	114° 02.667' W
Big Knife	Helispot	1	Proposed	47° 08.805' N	113° 59.242' W
Big Knife	Repeater	CMD 11		47° 11.016' N	114° 00.743' W
Big Knife	Unimproved Landing Area		Crooks Helispot	47° 10.615' N	113° 52.088' W
Big Knife	Unimproved Landing Area			47° 10.161' N	113° 50.835' W
Big Knife	Unimproved Landing Area			47° 10.037' N	113° 52.978' W

Big Knife
MT-FHA-000094
 Fire Perimeter as of
 08/05/2023 1755 hrs
 4,864 Acres

Legend:

- Dip Site (Purple circle)
- Helispot (Yellow circle)
- Unimproved Landing Area (Blue circle)
- Drop Point (Blue square)
- Closure (Blue X)
- Camp (Blue square with X)
- Staging Area (Blue square with S)
- Division Break (Black line with double arrows)
- Lookout (Black tower icon)
- Hot Spot - Spot Fire (Red circle)
- Other (Grey circle)
- Gate (Grey circle with X)
- Bridge (Grey arch icon)
- Stream Crossing (Green arch icon)
- Repeater (Blue diamond)
- Water Source (Blue W icon)
- Completed Dozer Line (Black line with X)
- Completed Fuel Break (Black line with A)
- Completed Hand Line (Black line with H)
- Planned Mixed Construction Line (Pink line with M)
- Access or Improved Road (Grey line)
- Other (Black line)
- Escape Route (Green line)
- Temporary Flight Restriction (Blue line)
- Wildfire Daily Fire Perimeter (Red outline)
- Highlighted Feature (Yellow dot)

Miles 0 1 2