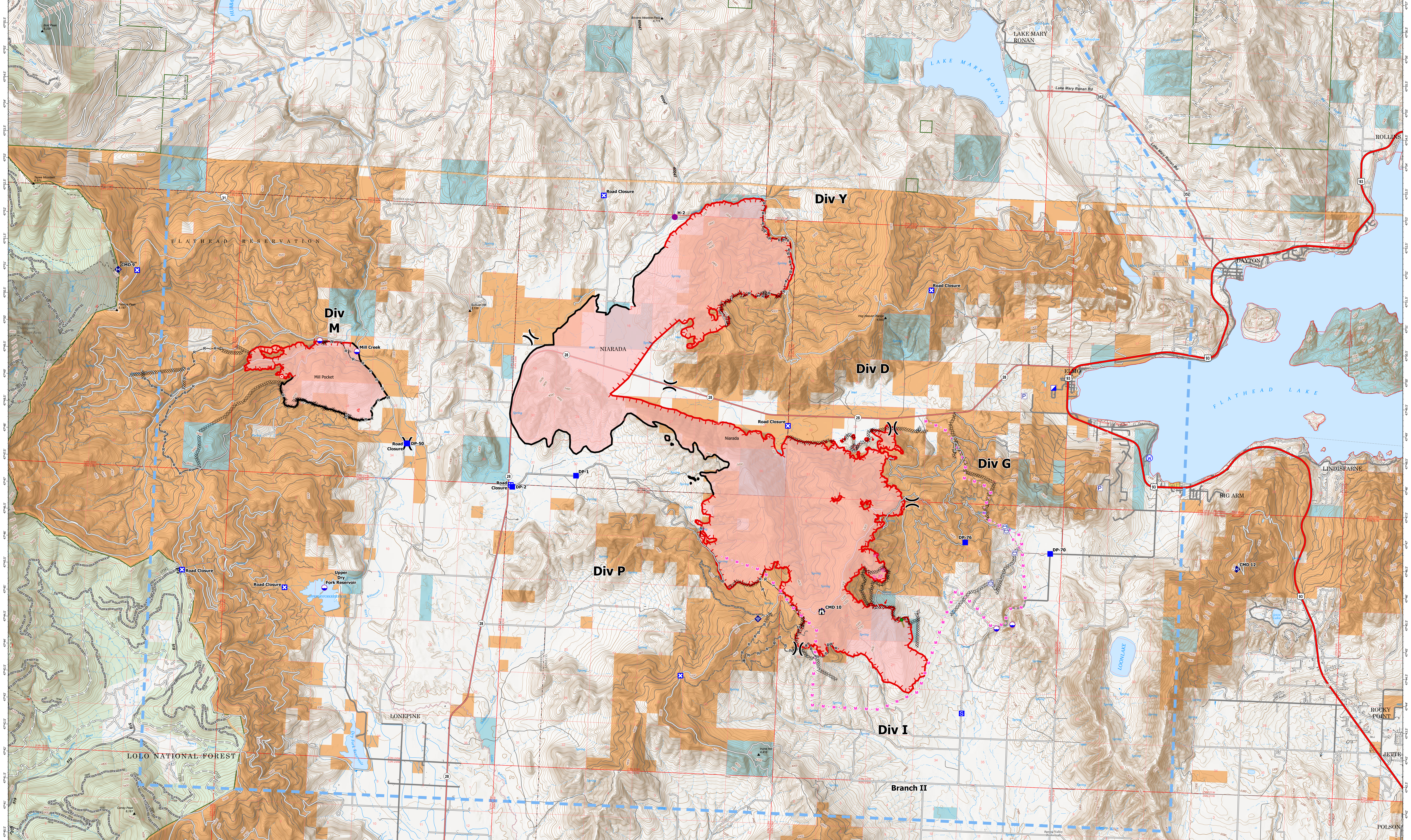


AIR OPERATIONS - NIARADA / MILL POCKET

8/7/2023

IncidentName	FeatureCategory	Label	Latitude	Longitude
Mill Pocket	Dip Site		47° 49.892' N	114° 41.634' W
Mill Pocket	Repeater		47° 51.030' N	114° 42.277' W
Mill Pocket	Dip Site	Mill Creek	47° 49.722' N	114° 40.529' W
Mill Pocket	Dip Site	Upper Dry Fork Reservoir	47° 45.315' N	114° 41.182' W
Niarada	Incident Command Post		47° 49.633' N	114° 21.383' W
Niarada	Dip Site		47° 45.210' N	114° 22.231' W
Niarada	Dip Site		47° 45.122' N	114° 22.662' W
Niarada	Repeater	CMD 10	47° 45.300' N	114° 27.668' W
Niarada	Repeater	CMD 12	47° 46.416' N	114° 16.135' W
Niarada	Helispot	H-10	47° 45.167' N	114° 29.052' W
Niarada	Helispot	H-2	47° 52.489' N	114° 32.021' W



Niarada
MT-FHA-000100

Mill Pocket
MT-FHA-000101

Fire Perimeter as of
08/06/2023 0005 hrs
18,366 Acres

Fire Perimeter as of
08/06/2023 0005 hrs
2,135 Acres

- P Pump
 - W Water Tank
 - D Dip Site
 - R Repeater
 - H Helispot
 - N Division Break
 - I Incident Command Post
 - D Drop Point
 - X Closure
- S Staging Area
 - L Lookout
 - H Hot Spot - Spot Fire
 - R Repair Point
 - I Internet Access
 - D Dip Site
 - W Water Source
- H Completed Dozer Line
 - H Completed Hand Line
 - R Completed Road as Line
 - P Planned Dozer Line
 - P Planned Mixed Construction Line
 - P Planned Road as Line
 - A Access or Improved Road
 - F Fence
- Other
 - Repair Line
 - Temporary Flight Restriction
 - Wildfire Daily Fire Perimeter
 - Trailhead
 - Primary Highway
 - Secondary Highway
 - Secondary Paved
 - Secondary Dirt
 - Planned Road Construction Line
 - HFLD Plus GTAC Pedestrian Path
 - Trail
 - National Designated Trail
- Gravel Road
 - Dirt Road
 - Unimproved Road
 - Forest Service Roads Closed
 - Administrative FS Boundary
 - Ranger District Boundary
 - Indian Reservation
 - County Boundary
 - Incorporated Place
 - Census Designated Place
 - Township
 - Section
 - USFS Roadless Areas
 - American Indian Lands
 - Forest Service Land
 - Bureau of Land Management Lands

