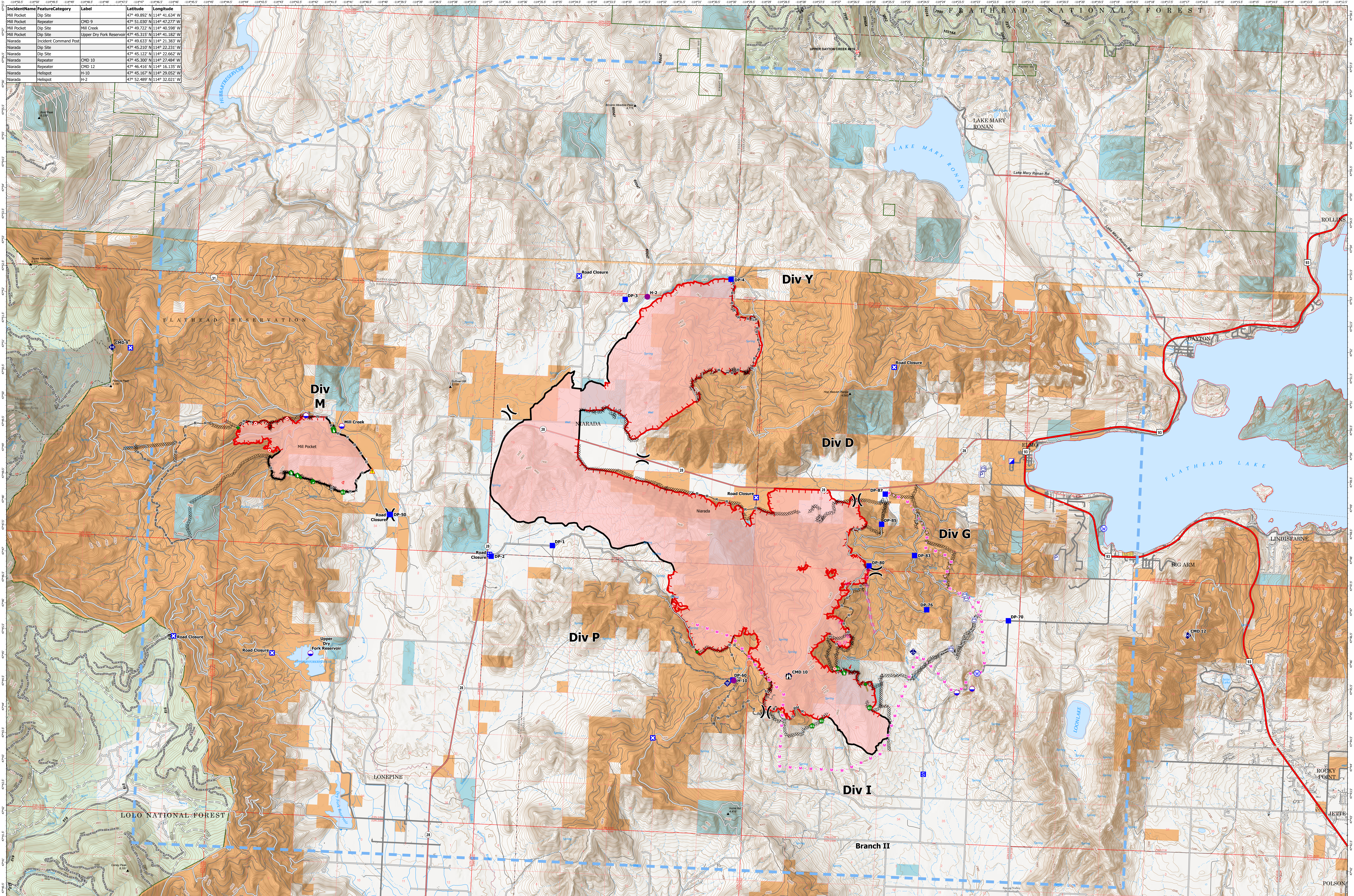


AIR OPERATIONS - NIARADA / MILL POCKET

8/8/2023

IncidentName	FeatureCategory	Label	Latitude	Longitude
Mill Pocket	Dip Site		47° 49.892' N	114° 41.634' W
Mill Pocket	Repeater		47° 51.030' N	114° 42.277' W
Mill Pocket	Dip Site	Mill Creek	47° 49.772' N	114° 40.528' W
Mill Pocket	Dip Site	Upper Dry Fork Reservoir	47° 45.315' N	114° 41.182' W
Niarada	Incident Command Post		47° 49.633' N	114° 21.383' W
Niarada	Dip Site		47° 45.210' N	114° 22.231' W
Niarada	Dip Site		47° 45.122' N	114° 22.662' W
Niarada	Repeater	CMD 10	47° 45.300' N	114° 27.668' W
Niarada	Repeater	CMD 12	47° 46.816' N	114° 16.135' W
Niarada	Helispot	H-10	47° 45.167' N	114° 29.052' W
Niarada	Helispot	H-2	47° 52.489' N	114° 32.021' W



Niarada
MT-FHA-000100
 Fire Perimeter as of
 08/07/2023 2306 hrs
 20,365 Acres

Mill Pocket
MT-FHA-000101
 Fire Perimeter as of
 08/07/2023 2306 hrs
 2,135 Acres

- P Pump
 - W Water Tank
 - D Dip Site
 - R Repeater
 - H Helispot
 - M Division Break
 - I Incident Command Post
 - D Drop Point
 - C Closure
- S Staging Area
 - L Lookout
 - H Hot Spot - Spot Fire
 - O Other
 - R Repair Point
 - F Fence - Cut/Damaged
 - D Dozer Push
 - M Mobile Weather Unit
- I Internet Access
 - R Repeater
 - H Hazard
 - W Water Source
- H Completed Hand Line
 - R Completed Road as Line
 - P Planned Dozer Line
 - M Planned Mixed Construction Line
 - P Planned Road as Line
 - A Access or Improved Road
 - F Fence
- H Other
 - R Repair Line
 - T Temporary Flight Restriction
- H Wildfire Daily Fire Perimeter
 - T Trailhead
 - P Primary Highway
 - S Secondary Highway
 - S Secondary Paved
 - S Secondary Dirt
 - S Secondary Dirt
 - M MIFLD Plus GTAC Pedestrian Path
 - T Trail
 - T National Designated Trail
- G Gravel Road
 - D Dirt Road
 - U Unimproved Road
 - F Forest Service Roads Closed
 - A Administrative FS Boundary
 - R Ranger District Boundary
 - I Indian Reservation
 - C County Boundary
- I Incorporated Place
 - C Census Designated Place
 - S Section
 - U USFS Roadless Areas
 - A American Indian Lands
 - F Forest Service Land
 - B Bureau of Land Management Lands