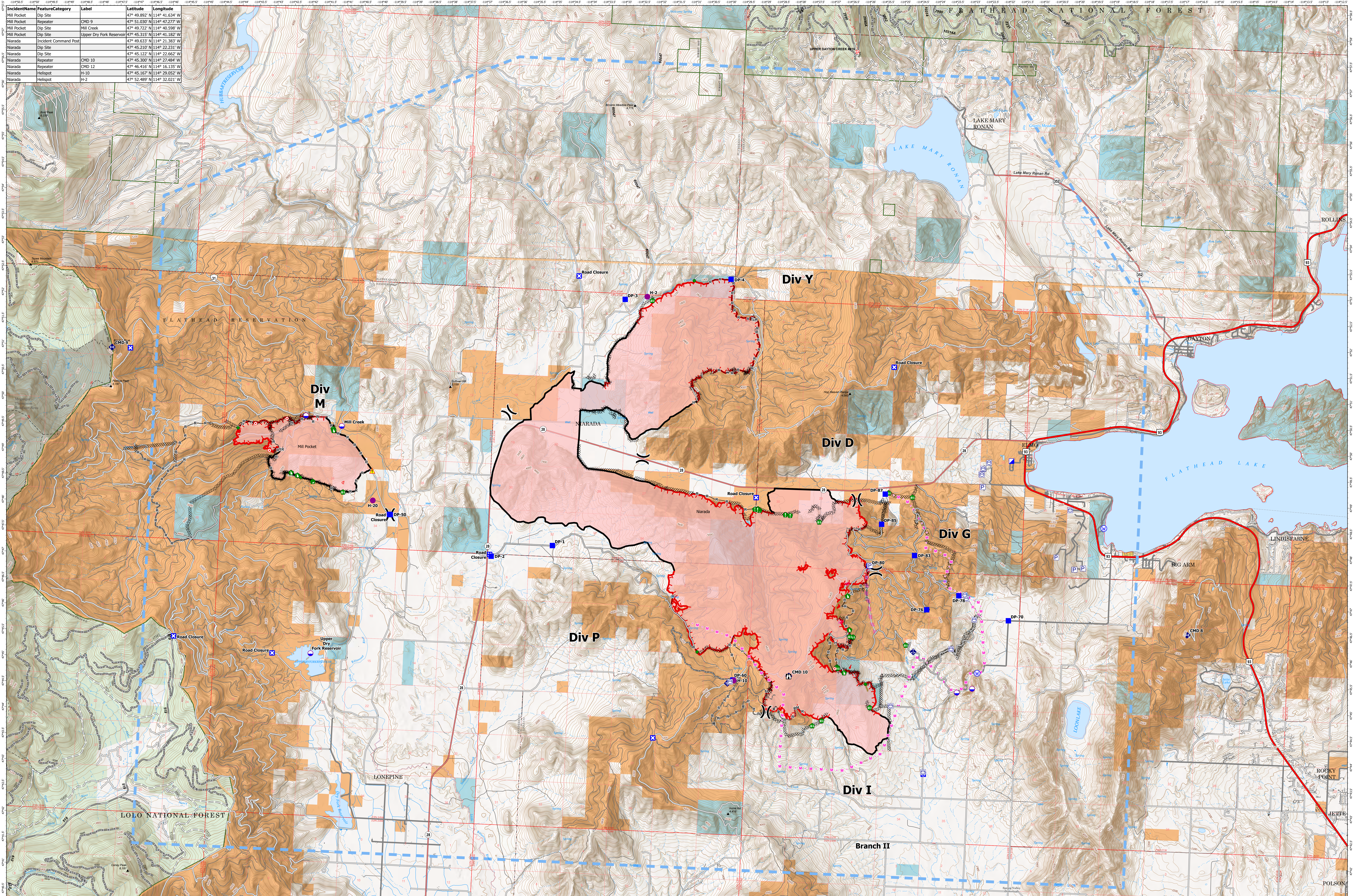


AIR OPERATIONS - NIARADA / MILL POCKET

8/9/2023

| IncidentName | FeatureCategory | Label | Latitude | Longitude |
|--------------|-----------------------|--------------------------|---------------|----------------|
| Mill Pocket | Dip Site | | 47° 49.892' N | 114° 41.634' W |
| Mill Pocket | Repeater | | 47° 51.030' N | 114° 42.277' W |
| Mill Pocket | Dip Site | Mill Creek | 47° 49.772' N | 114° 40.528' W |
| Mill Pocket | Dip Site | Upper Dry Fork Reservoir | 47° 45.315' N | 114° 41.182' W |
| Niarada | Incident Command Post | | 47° 49.633' N | 114° 21.383' W |
| Niarada | Dip Site | | 47° 45.210' N | 114° 22.231' W |
| Niarada | Dip Site | | 47° 45.122' N | 114° 22.662' W |
| Niarada | Repeater | CMD 10 | 47° 45.300' N | 114° 27.668' W |
| Niarada | Repeater | CMD 12 | 47° 46.816' N | 114° 16.135' W |
| Niarada | Helispot | H-10 | 47° 45.167' N | 114° 29.052' W |
| Niarada | Helispot | H-2 | 47° 52.489' N | 114° 32.021' W |



Niarada
MT-FHA-000100
 Fire Perimeter as of
 08/07/2023 2306 hrs
 20,365 Acres

Mill Pocket
MT-FHA-000101
 Fire Perimeter as of
 08/07/2023 2306 hrs
 2,135 Acres

- P Pump
 - W Water Tank
 - D Dip Site
 - H Helispot
 - M Division Break
 - I Incident Command Post
 - D Drop Point
 - C Closure
 - S Staging Area
- L Lookout
 - H Hot Spot - Spot Fire
 - O Other
 - R Resource Location
 - R Repair Point
 - C Fence - Cut/Damaged
 - D Dozer Push
 - M Mobile Weather Unit
 - I Internet Access
- R Repeater
 - H Hazard
 - W Water Source
- D Completed Dozer Line
 - H Completed Hand Line
 - R Completed Road as Line
 - P Planned Dozer Line
 - M Planned Road Construction Line
 - F Planned Road as Line
 - A Access or Improved Road
 - F Fence
 - O Other
- R Repair Line
 - T Temporary Flight Restriction
 - P Wildfire Daily Fire Perimeter
 - T Trailhead
- P Primary Highway
 - S Secondary Highway
 - S Secondary Paved
 - S Secondary Dirt
 - S Secondary Dirt
 - P HIFLD Plus GTAC Pedestrian Path
 - T Trail
 - T National Designated Trail
 - G Gravel Road
- D Dirt Road
 - U Unimproved Road
 - C Forest Service Roads Closed
 - A Administrative FS Boundary
 - R Ranger District Boundary
 - I Indian Reservation
 - B Bureau of Land Management Lands
 - S State Lands
 - T Township
 - S Section
 - U USFS Roadless Areas
 - A American Indian Lands
 - F Forest Service Land
 - B Bureau of Land Management Lands
 - S State Lands
 - I Incorporated Place
 - C Census Designated Place