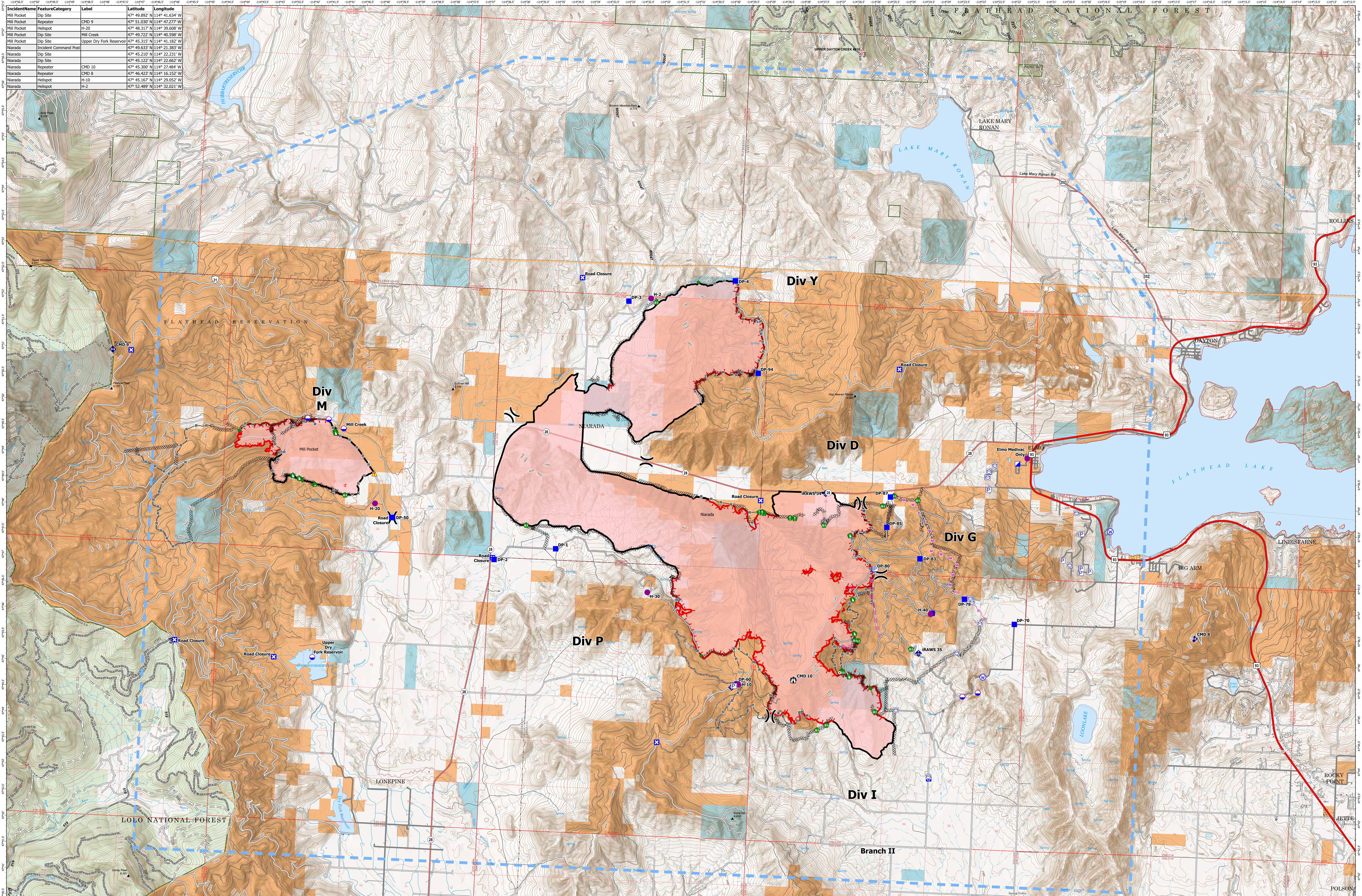


AIR OPERATIONS - NIARADA / MILL POCKET

8/10/2023

IncidentName	FeatureCategory	Label	Latitude	Longitude
Mill Pocket	Dip Site		47° 49.892' N	114° 41.634' W
Mill Pocket	Repeater	CMD 9	47° 51.030' N	114° 42.277' W
Mill Pocket	Hellspot	H-20	47° 48.310' N	114° 39.626' W
Mill Pocket	Dip Site	Mill Creek	47° 49.722' N	114° 40.598' W
Mill Pocket	Dip Site	Upper Dry Fork Reservoir	47° 45.315' N	114° 41.182' W
Niarada	Incident Command Post		47° 49.633' N	114° 41.383' W
Niarada	Dip Site		47° 45.210' N	114° 42.231' W
Niarada	Dip Site		47° 45.122' N	114° 42.662' W
Niarada	Repeater	CMD 10	47° 45.200' N	114° 42.484' W
Niarada	Repeater	CMD 8	47° 46.423' N	114° 16.152' W
Niarada	Hellspot	H-10	47° 45.167' N	114° 29.052' W
Niarada	Hellspot	H-2	47° 52.489' N	114° 32.021' W



Niarada
MT-FHA-000100
 Fire Perimeter as of
 08/07/2023 2306 hrs
 20,365 Acres

Mill Pocket
MT-FHA-000101
 Fire Perimeter as of
 08/07/2023 2306 hrs
 2,135 Acres

- P Pump
 - W Water Tank
 - D Dip Site
 - H Hellspot
 - N Division Break
 - I Incident Command Post
 - D Drop Point
 - C Closure
 - S Staging Area
- L Lookout
 - H Hot Spot - Spot Fire
 - O Other
 - R Resource Location
 - R Repair Point
 - C Fence - Cut/Damaged
 - D Dozer Push
 - M Mobile Weather Unit
 - I Internet Access
- R Repeater
 - H Hazard
 - W Water Source
- H Completed Hand Line
 - M Completed Mixed Construction Line
 - R Completed Road as Line
 - P Planned Dozer Line
 - M Planned Mixed Construction Line
 - R Planned Road as Line
 - A Access or Improved Road
 - F Fence
- D Other
 - F Temporary Flight Restriction
- W Wildfire Daily Fire Perimeter
 - T Trailhead
- P Primary Highway
 - S Secondary Highway
 - S Secondary Paved
 - S Secondary Dirt
 - S Secondary Dirt
 - P HIRL Plus GTAC Pedestrian Path
 - T Trail
 - A National Designated Trail
 - G Gravel Road
- D Dirt Road
 - U Unimproved Road
 - C Forest Service Roads Closed
 - A Administrative FS Boundary
 - R Ranger District Boundary
 - I Indian Reservation
 - B Bureau of Land Management Lands
 - S State Lands
 - T Township
 - S Section
 - U USFS Roadless Areas
 - A American Indian Lands
 - F Forest Service Land
 - B Bureau of Land Management Lands
 - S State Lands
 - I Incorporated Place
 - C Census Designated Place