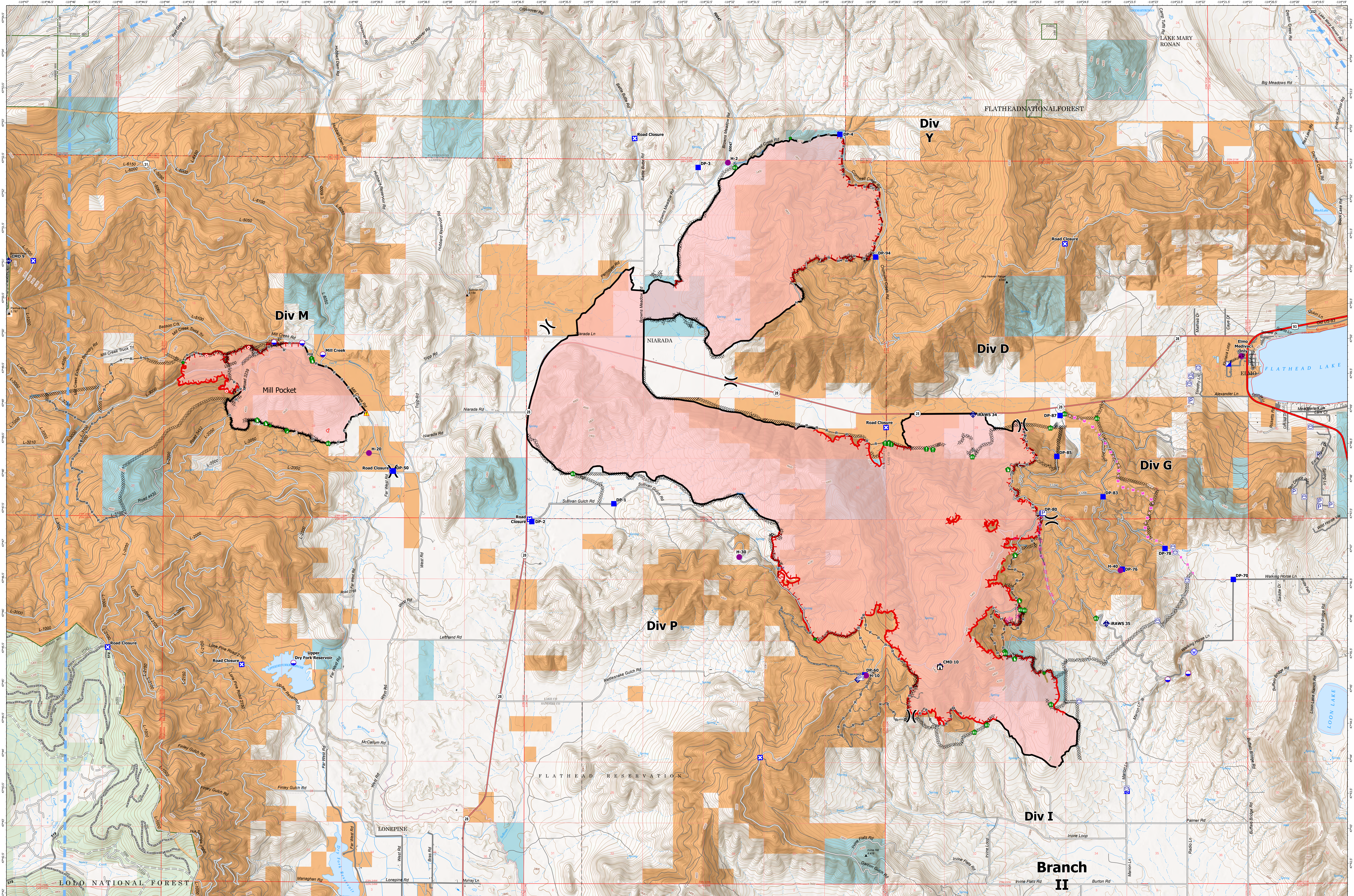


OPERATIONS MAP - NIARADA / MILL POCKET

8/10/2023



Niarada
MT-FHA-000100
 Fire Perimeter as of
 08/07/2023 2306 hrs
 20,365 Acres

Mill Pocket
MT-FHA-000101
 Fire Perimeter as of
 08/07/2023 2306 hrs
 2,135 Acres

- | | | | | | | | | |
|---|--|--|--|---|--|--|--|---|
| <ul style="list-style-type: none"> ■ Contained ■ Uncontained ■ Wildfire Daily Fire Perimeter ■ Pump ■ Water Tank ■ Dip Site | <ul style="list-style-type: none"> ● Helispot ⌘ Division Break ■ Incident Command Post ■ Drop Point ■ Closure ■ Staging Area | <ul style="list-style-type: none"> ■ Lookout ● Hot Spot - Spot Fire ● Other ● Resource Location ● Repair Point ● Fence - Cut/Damaged | <ul style="list-style-type: none"> ● Dozer Push ● Mobile Weather Unit ● Internet Access ● Repeater ● Hazard ● Water Source | <ul style="list-style-type: none"> — Completed Dozer Line — Completed Hand Line — Completed Mixed Construction Line — Completed Road as Line — Planned Dozer Line — Planned Mixed Construction Line | <ul style="list-style-type: none"> — Planned Road as Line — Access or Improved Road — Fence — Other — Repair Line — Temporary Flight Restriction | <ul style="list-style-type: none"> — Primary Highway — Secondary Highway — Secondary Paved — Secondary Dirt — Secondary Dirt — HIFLD Plus GTAC Pedestrian Path | <ul style="list-style-type: none"> — Trail — Gravel Road — Dirt Road — Unimproved Road — Forest Service Roads Closed — County Boundary | <ul style="list-style-type: none"> ■ Township ■ Section ■ USFS Roadless Areas ■ American Indian Lands ■ Forest Service Land ■ State Lands |
|---|--|--|--|---|--|--|--|---|

