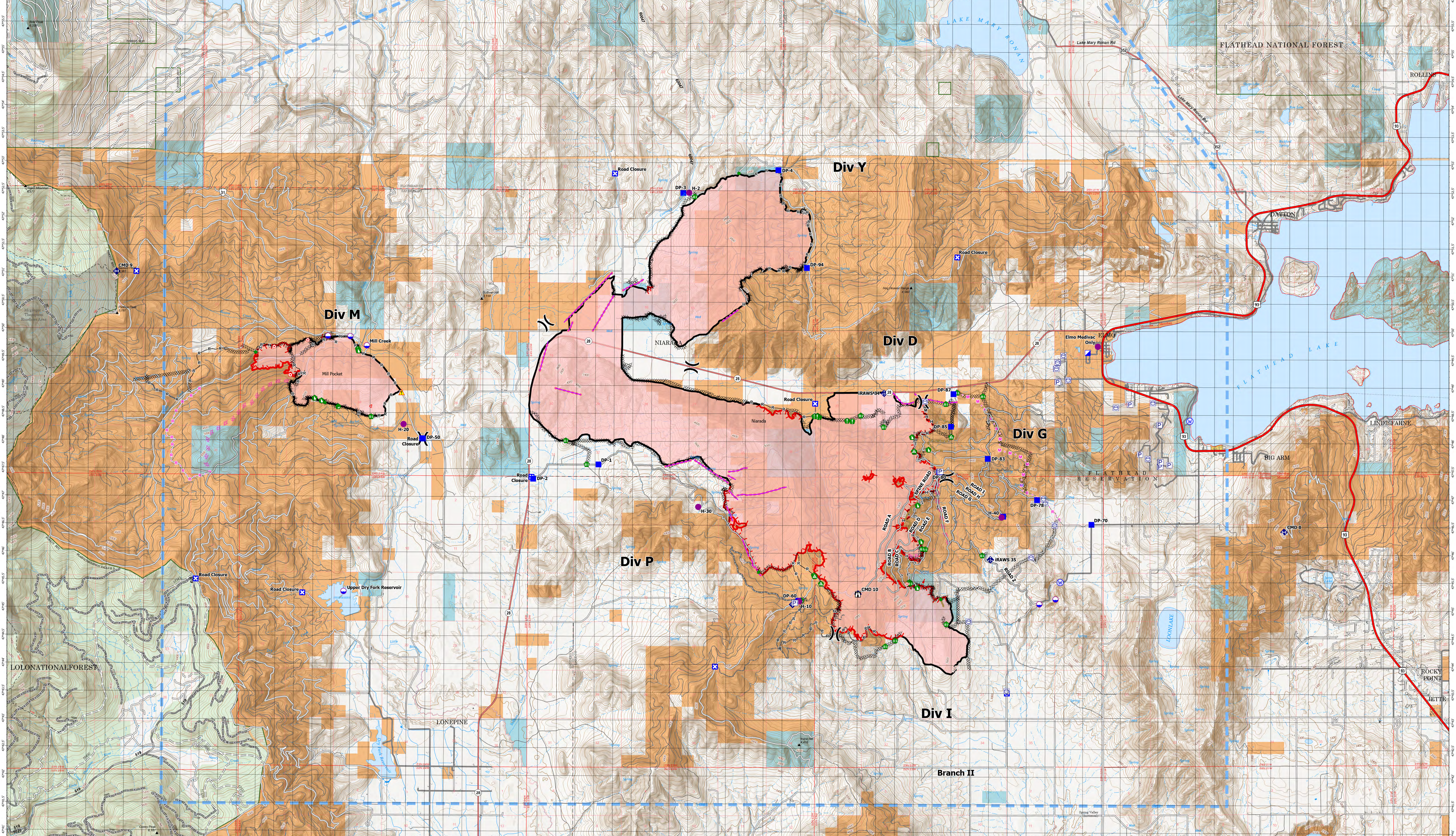


AIR OPERATIONS - NIARADA / MILL POCKET

8/11/2023

IncidentName	FeatureCategory	Label	Latitude	Longitude
Mill Pocket	Dip Site		47° 49.886' N	114° 41.037' W
Mill Pocket	Dip Site		47° 49.892' N	114° 41.634' W
Mill Pocket	Repeater	CMD 9	47° 51.039' N	114° 42.277' W
Mill Pocket	Helispot	H-20	47° 48.317' N	114° 39.608' W
Mill Pocket	Dip Site	Mill Creek	47° 49.722' N	114° 40.598' W
Mill Pocket	Dip Site	Upper Dry Fork Reservoir	47° 45.315' N	114° 41.182' W
Niarada	Incident Command Post		47° 49.633' N	114° 21.383' W
Niarada	Dip Site		47° 45.210' N	114° 22.231' W
Niarada	Dip Site		47° 45.122' N	114° 22.662' W
Niarada	Repeater	CMD 10	47° 45.300' N	114° 27.484' W
Niarada	Repeater	CMD 8	47° 46.423' N	114° 16.152' W
Niarada	Helispot	Elmo Medvac Only	47° 49.745' N	114° 21.113' W
Niarada	H-10		47° 45.167' N	114° 29.052' W
Niarada	Helispot	H-2	47° 52.489' N	114° 32.011' W
Niarada	Helispot	H-30	47° 46.855' N	114° 31.749' W
Niarada	Helispot	H-40	47° 46.682' N	114° 23.668' W



Niarada
MT-FHA-000100
 Fire Perimeter as of
 08/07/2023 2306 hrs
 20,365 Acres

Mill Pocket
MT-FHA-000101
 Fire Perimeter as of
 08/07/2023 2306 hrs
 2,135 Acres

- P Pump
 - W Water Tank
 - D Dip Site
 - R Repeater
 - H Helispot
 - N Division Break
 - I Incident Command Post
 - D Drop Point
 - C Closure
 - S Staging Area
- L Lookout
 - H Hot Spot - Spot Fire
 - O Other
 - R Resource Location
 - P Repair Point
 - L Landing or Log Deck
 - F Fence - Cut/Damaged
 - C Closure
 - M Mobile Weather Unit
- I Internet Access
 - R Repeater
 - H Hazard
 - W Water Source
- C Completed Dozer Line
 - H Completed Hand Line
 - M Completed Mixed Construction Line
 - R Completed Road as Line
 - P Planned Dozer Line
 - M Planned Mixed Construction Line
 - R Planned Road as Line
 - A Access or Improved Road
 - F Fence
- O Other
 - R Road Repair
 - D Retardant Drop
 - T Temporary Flight Restriction
- W Wildfire Daily Fire Perimeter
 - T Trailhead
- P Primary Highway
 - S Secondary Highway
 - P Secondary Paved
 - D Secondary Dirt
 - D Secondary Dirt
 - P HIFLD Plus GTAC Pedestrian Path
 - T Trail
 - N National Designated Trail
 - G Gravel Road
- D Dirt Road
 - U Unimproved Road
 - C Forest Service Roads Closed
 - A Administrative FS Boundary
 - D Ranger District Boundary
 - I Indian Reservation
 - P HIFLD Plus GTAC Pedestrian Path
 - C County Boundary
 - C Census Designated Place
 - T Township
- S Section
 - U USFS Roadless Areas
 - A American Indian Lands
 - F Forest Service Land
 - B Bureau of Land Management Lands
 - S State Lands

