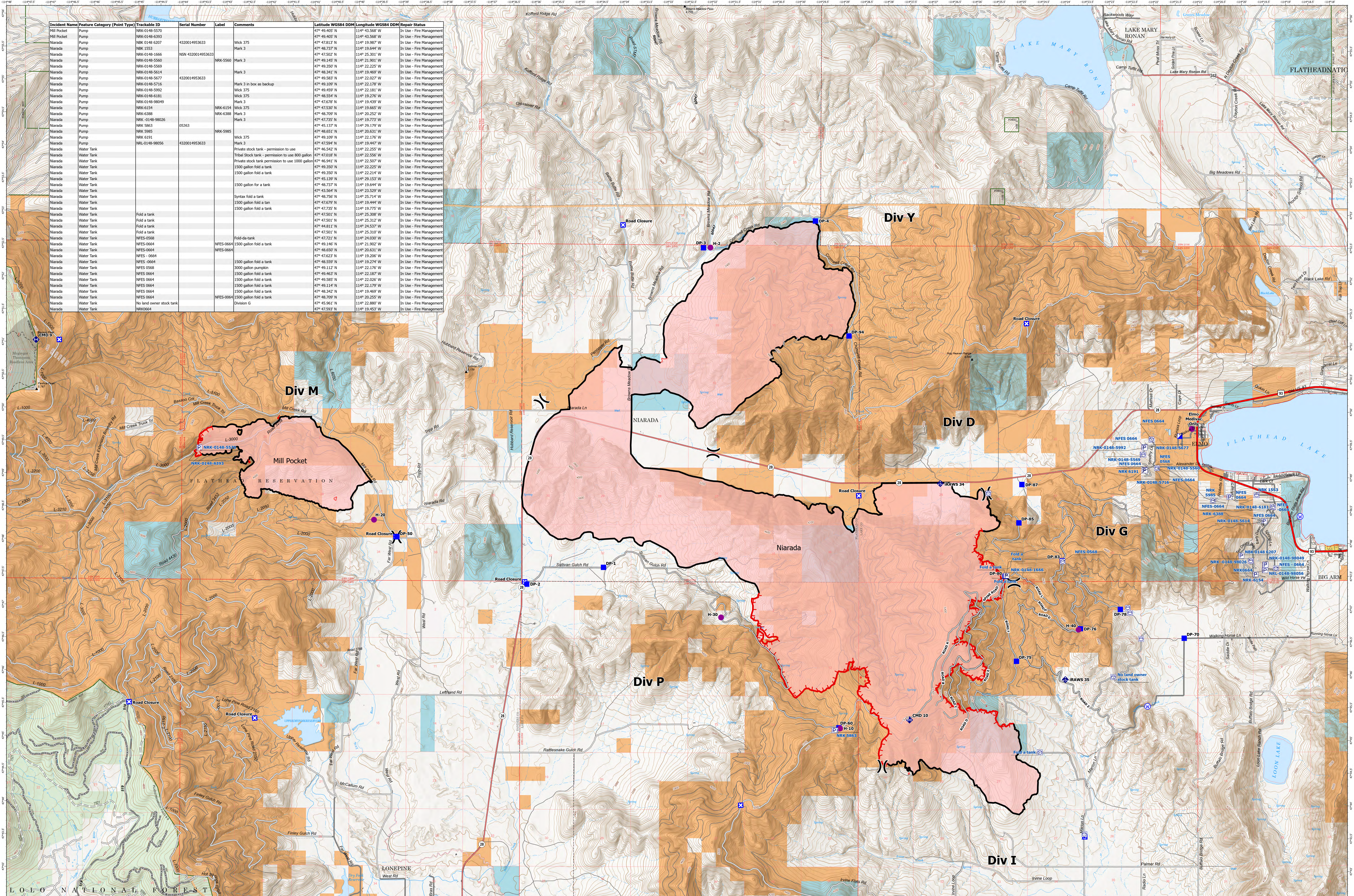


ACCOUNTABLE PROPERTY - NIARADA / MILL POCKET

8/12/2023



Incident Name	Feature Category (Point Type)	Trackable ID	Serial Number	Label	Comments	Latitude WGS84 DDM	Longitude WGS84 DDM	Repair Status
Mill Pocket	Pump	NRK-0148-5570				47° 49.405' N	114° 43.568' W	In Use - Fire Management
Mill Pocket	Pump	NRK-0148-5570				47° 49.405' N	114° 43.568' W	In Use - Fire Management
Niarada	Pump	NRK-0148-6207	4320014953633	Wick 375		47° 47.813' N	114° 19.987' W	In Use - Fire Management
Niarada	Pump	NRK-1553		Mark 3		47° 48.737' N	114° 19.644' W	In Use - Fire Management
Niarada	Pump	NRK-0148-1666	NSN 4320014953633	Mark 3		47° 47.502' N	114° 25.301' W	In Use - Fire Management
Niarada	Pump	NRK-0148-5599	NRK-5560	Mark 3		47° 49.145' N	114° 21.901' W	In Use - Fire Management
Niarada	Pump	NRK-0148-5669		Mark 3		47° 48.350' N	114° 22.225' W	In Use - Fire Management
Niarada	Pump	NRK-0148-5614		Mark 3		47° 48.341' N	114° 19.469' W	In Use - Fire Management
Niarada	Pump	NRK-0148-5677	4320014953633	Mark 3		47° 49.583' N	114° 22.027' W	In Use - Fire Management
Niarada	Pump	NRK-0148-5716		Mark 3 in box as backup		47° 49.109' N	114° 22.178' W	In Use - Fire Management
Niarada	Pump	NRK-0148-5992		Wick 375		47° 49.459' N	114° 22.181' W	In Use - Fire Management
Niarada	Pump	NRK-0148-6181		Wick 375		47° 48.554' N	114° 19.276' W	In Use - Fire Management
Niarada	Pump	NRK-0148-58049		Mark 3		47° 47.678' N	114° 19.439' W	In Use - Fire Management
Niarada	Pump	NRK-6154	NRK-6154	Wick 375		47° 47.530' N	114° 19.660' W	In Use - Fire Management
Niarada	Pump	NRK-6388	NRK-6388	Mark 3		47° 48.709' N	114° 20.323' W	In Use - Fire Management
Niarada	Pump	NRK-0148-98026		Mark 3		47° 47.735' N	114° 19.773' W	In Use - Fire Management
Niarada	Pump	NRK-5983	05263	NRK-5985		47° 45.137' N	114° 19.179' W	In Use - Fire Management
Niarada	Pump	NRK-5985		Wick 375		47° 46.651' N	114° 20.631' W	In Use - Fire Management
Niarada	Pump	NRK-6191		Mark 3		47° 46.109' N	114° 22.178' W	In Use - Fire Management
Niarada	Pump	NRL-0148-98056	4320014953633	Mark 3		47° 47.599' N	114° 19.447' W	In Use - Fire Management
Niarada	Water Tank			Private stock tank - permission to use		47° 46.542' N	114° 22.255' W	In Use - Fire Management
Niarada	Water Tank			Tribal Stock tank - permission to use 800 gallon		47° 47.018' N	114° 22.556' W	In Use - Fire Management
Niarada	Water Tank			Private stock tank permission to use 1000 gallon		47° 46.941' N	114° 22.507' W	In Use - Fire Management
Niarada	Water Tank			1500 gallon fold a tank		47° 49.350' N	114° 22.225' W	In Use - Fire Management
Niarada	Water Tank			1500 gallon fold a tank		47° 49.350' N	114° 22.214' W	In Use - Fire Management
Niarada	Water Tank			1500 gallon for a tank		47° 45.139' N	114° 29.153' W	In Use - Fire Management
Niarada	Water Tank			1500 gallon fold a tank		47° 48.737' N	114° 19.644' W	In Use - Fire Management
Niarada	Water Tank			1500 gallon fold a tank		47° 49.350' N	114° 22.225' W	In Use - Fire Management
Niarada	Water Tank			Syntax fold a tank		47° 48.750' N	114° 25.714' W	In Use - Fire Management
Niarada	Water Tank			1500 gallon fold a tank		47° 47.679' N	114° 19.444' W	In Use - Fire Management
Niarada	Water Tank			1500 gallon fold a tank		47° 47.735' N	114° 19.775' W	In Use - Fire Management
Niarada	Water Tank			Fold a tank		47° 47.501' N	114° 25.308' W	In Use - Fire Management
Niarada	Water Tank			Fold a tank		47° 47.501' N	114° 25.312' W	In Use - Fire Management
Niarada	Water Tank			Fold a tank		47° 48.812' N	114° 24.537' W	In Use - Fire Management
Niarada	Water Tank			Fold a tank		47° 47.501' N	114° 25.310' W	In Use - Fire Management
Niarada	Water Tank	NFES-0568		Fold-a-tank		47° 47.721' N	114° 24.030' W	In Use - Fire Management
Niarada	Water Tank	NFES-0664	NFES-0664	1500 gallon fold a tank		47° 48.146' N	114° 21.902' W	In Use - Fire Management
Niarada	Water Tank	NFES-0664	NFES-0664	1500 gallon fold a tank		47° 48.650' N	114° 20.631' W	In Use - Fire Management
Niarada	Water Tank	NFES-0664	NFES-0664	1500 gallon fold a tank		47° 47.623' N	114° 19.206' W	In Use - Fire Management
Niarada	Water Tank	NFES-0664	NFES-0664	1500 gallon fold a tank		47° 48.599' N	114° 19.274' W	In Use - Fire Management
Niarada	Water Tank	NFES-0664	NFES-0664	1500 gallon pumpkin		47° 49.112' N	114° 22.170' W	In Use - Fire Management
Niarada	Water Tank	NFES-0664	NFES-0664	1500 gallon fold a tank		47° 49.463' N	114° 22.187' W	In Use - Fire Management
Niarada	Water Tank	NFES-0664	NFES-0664	1500 gallon fold a tank		47° 49.585' N	114° 22.026' W	In Use - Fire Management
Niarada	Water Tank	NFES-0664	NFES-0664	1500 gallon fold a tank		47° 48.114' N	114° 22.179' W	In Use - Fire Management
Niarada	Water Tank	NFES-0664	NFES-0664	1500 gallon fold a tank		47° 48.342' N	114° 19.469' W	In Use - Fire Management
Niarada	Water Tank	NFES-0664	NFES-0664	1500 gallon fold a tank		47° 48.709' N	114° 20.255' W	In Use - Fire Management
Niarada	Water Tank	NFES-0664	NFES-0664	1500 gallon fold a tank		47° 45.961' N	114° 22.880' W	In Use - Fire Management
Niarada	Water Tank	NRK0664		Division G		47° 47.593' N	114° 19.453' W	In Use - Fire Management

Niarada
MT-FHA-000100
 Fire Perimeter as of
 08/11/2023 2230 hrs
 20,365 Acres

Mill Pocket
MT-FHA-000101
 Fire Perimeter as of
 08/11/2023 2230 hrs
 2,135 Acres

- Pump
 - Water Tank
 - Helispot
 - Division Break
 - Incident Command Post
 - Drop Point
- Closure
 - Staging Area
 - Mobile Weather Unit
 - Repeater
 - Water Source
 - Access or Improved Road
- Wildfire Daily Fire Perimeter
 - Primary Highway
 - Secondary Highway
 - Secondary Paved
 - Secondary Dirt
 - Secondary Dirt
- HIFLD Plus GTAC Pedestrian Path
 - Trail
 - Gravel Road
 - Dirt Road
 - Unimproved Road
 - Forest Service Roads Closed
- Administrative FS Boundary
 - Ranger District Boundary
 - Indian Reservation
 - State Boundary
 - County Boundary
 - Census Designated Place
- Township
 - Section
 - Lake / Pond
 - Lake / Pond (Intermittent)
 - Stream/River; Artificial Path
 - Canal / Ditch
- Pipeline Underground
 - Stream/River Intermittent
 - USFS Roadless Areas
 - American Indian Lands
 - Forest Service Land
 - Bureau of Land Management Lands

0 1 2 Miles