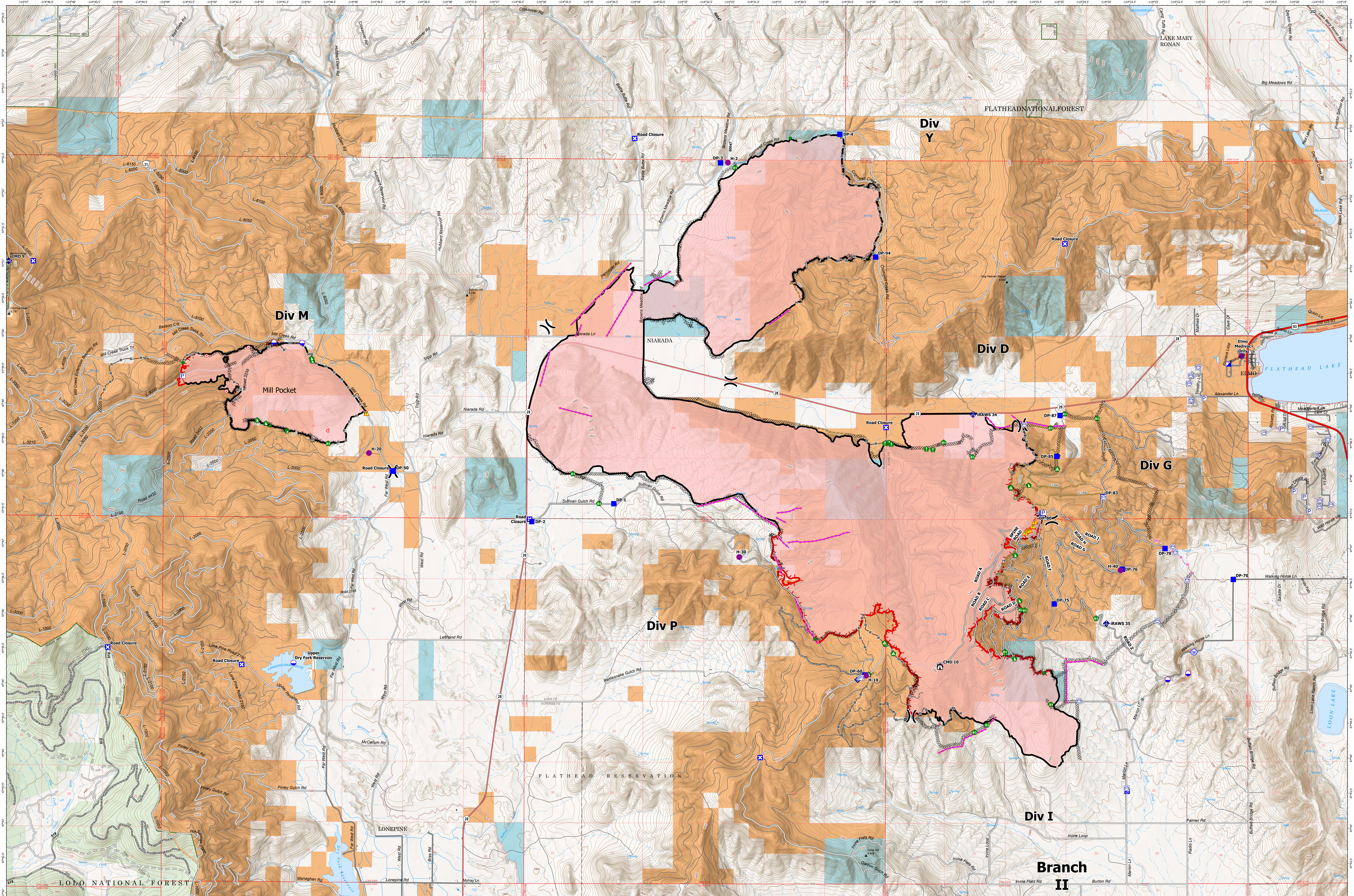


# OPERATIONS MAP - NIARADA / MILL POCKET

8/12/2023



**Niarada**  
**MT-FHA-000100**  
 Fire Perimeter as of  
 08/11/2023 2230 hrs  
 20,365 Acres

**Mill Pocket**  
**MT-FHA-000101**  
 Fire Perimeter as of  
 08/11/2023 2230 hrs  
 2,135 Acres

<ul style="list-style-type: none"> <li>■ Contained</li> <li>■ Uncontained</li> <li>■ Wildfire Daily Fire Perimeter</li> <li>■ Pump</li> <li>■ Water Tank</li> <li>■ Dip Site</li> <li>● Helispot</li> </ul>	<ul style="list-style-type: none"> <li>✕ Division Break</li> <li>■ Incident Command Post</li> <li>■ Drop Point</li> <li>■ Closure</li> <li>■ Staging Area</li> <li>■ Lookout</li> <li>○ Hot Spot - Spot Fire</li> </ul>	<ul style="list-style-type: none"> <li>● Other</li> <li>● Resource Location</li> <li>● Repair Point</li> <li>● Landing or Log Deck</li> <li>● Fence - Cut/Damaged</li> <li>● Dozer Push</li> <li>● Mobile Weather Unit</li> </ul>	<ul style="list-style-type: none"> <li>◆ Internet Access</li> <li>◆ Repeater</li> <li>◆ Hazard</li> <li>◆ Water Source</li> <li>◆ Completed Dozer Line</li> <li>◆ Completed Hand Line</li> <li>◆ Completed Mixed Construction Line</li> </ul>	<ul style="list-style-type: none"> <li>— Completed Road as Line</li> <li>— Planned Dozer Line</li> <li>— Repair Road as Line</li> <li>— Access or Improved Road</li> <li>— Fence</li> <li>— Other</li> <li>— Repair Line</li> </ul>	<ul style="list-style-type: none"> <li>— Road Repair</li> <li>— Retardant Drop</li> <li>— Primary Highway</li> <li>— Secondary Highway</li> <li>— Secondary Paved</li> <li>— Secondary Dirt</li> <li>— Secondary Dirt</li> </ul>	<ul style="list-style-type: none"> <li>- - HIFLD Plus GTAC Pedestrian Path</li> <li>~ Trail</li> <li>~ Gravel Road</li> <li>~ Dirt Road</li> <li>~ Unimproved Road</li> <li>~ Forest Service Roads Closed</li> <li>□ Township</li> <li>□ Section</li> <li>□ USFS Roadless Areas</li> <li>□ American Indian Lands</li> <li>□ Forest Service Land</li> <li>□ State Lands</li> </ul>
---	---	---	---	---	--	---

