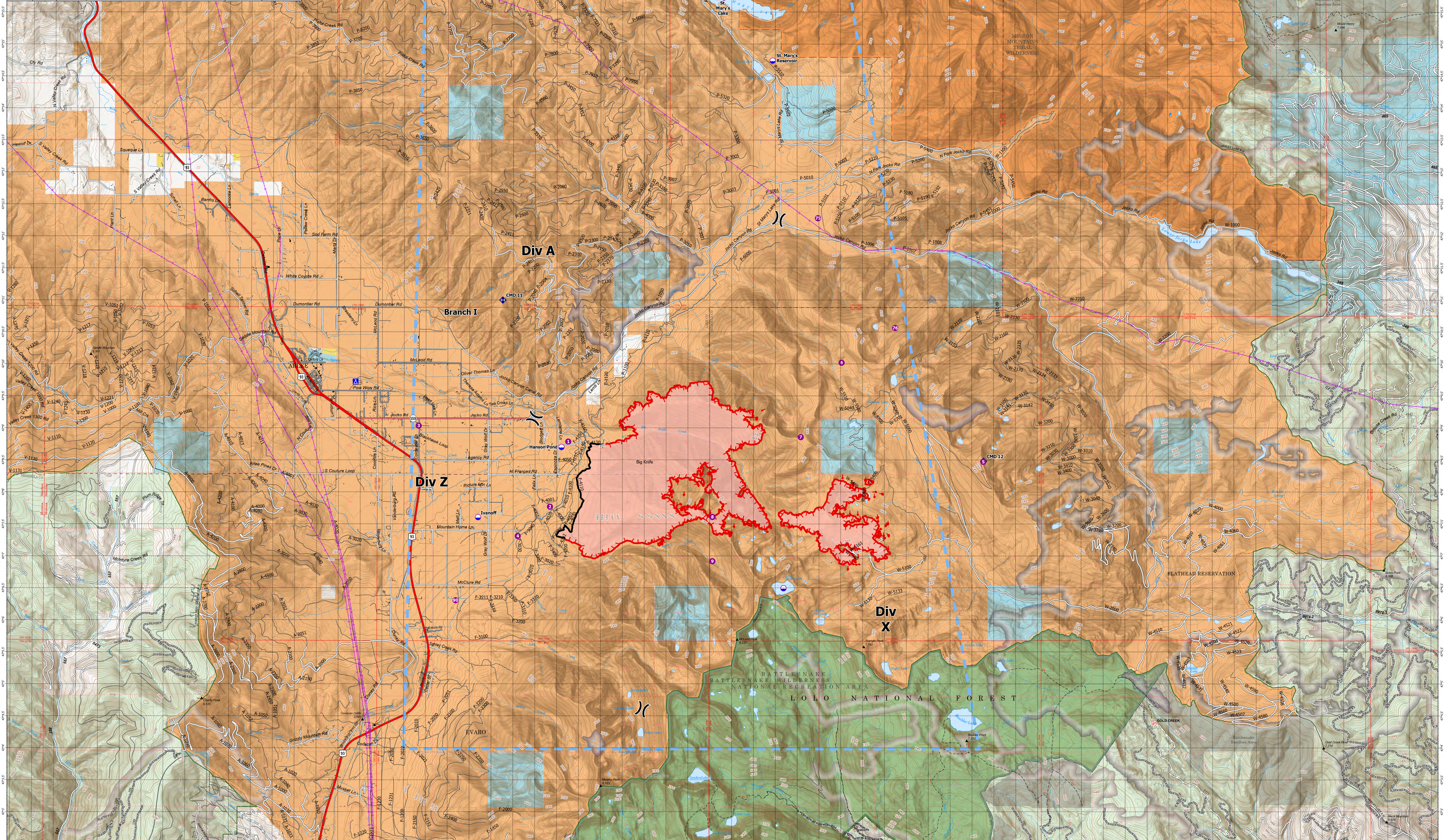


AIR OPERATIONS - BIG KNIFE

8/13/2023

Incident Name	FC Point Type	Label	Comments	Latitude WGS84	Longitude WGS84
Big Knife	Camp			47° 09.272' N	113° 54.122' W
Big Knife	Dip Site		Clear bucket or tank prior to use	47° 08.553' N	113° 54.334' W
Big Knife	Dip Site		1 mile west of bottom of the 3500' elevation (Type 3 Helicopters/Type 2)	47° 08.727' N	113° 59.396' W
Big Knife	Dip Site		2 miles south and west of the 3200' elevation (Type 2 Helicopters)	47° 07.624' N	114° 01.305' W
Big Knife	Dip Site		7 miles north of the 4000' elevation (Type 1 Helicopters)	47° 15.747' N	113° 55.678' W
Big Knife	Dip Site		St. Mary's Reserve	47° 14.707' N	113° 54.561' W
Big Knife	Helipod	1	Div 2 near top of slope	47° 07.807' N	113° 59.659' W
Big Knife	Helipod	2	By Jim Swales	47° 09.050' N	114° 02.667' W
Big Knife	Helipod	3	Proposed Helipod, approved 8/8/2023	47° 08.407' N	114° 03.393' W
Big Knife	Helipod	4	Proposed Helipod, approved 8/11/2023 by Helicopter 353E	47° 08.407' N	114° 03.393' W
Big Knife	Helipod	5	Proposed Helipod, approved 8/11/2023 by Helicopter 353E	47° 08.407' N	114° 03.393' W
Big Knife	Helipod	6	Proposed Helipod, approved 8/11/2023 by Helicopter 353E	47° 08.407' N	114° 03.393' W
Big Knife	Helipod	7	Proposed Helipod, approved 8/11/2023 by Helicopter 353E	47° 08.407' N	114° 03.393' W
Big Knife	Helipod	8	Proposed Helipod, approved 8/11/2023 by Helicopter 353E	47° 08.407' N	114° 03.393' W
Big Knife	Helipod	9	Proposed Helipod, approved 8/11/2023 by Helicopter 353E	47° 08.407' N	114° 03.393' W
Big Knife	Helipod	10	Proposed Helipod, approved 8/11/2023 by Helicopter 353E	47° 08.407' N	114° 03.393' W
Big Knife	Repeater	CMD 11	Unapproved Helipod, good for a Type 3 trip. Ask for manager approval and possibly on photo	47° 11.000' N	114° 00.743' W
Big Knife	Repeater	CMD 12		47° 08.400' N	113° 49.711' W



Big Knife MT-FHA-00094

Fire Perimeter as of
08/11/2023 2209 hrs
4,952 Acres

- Dip Site
- Helipod
- Division Break
- Camp
- Repeater
- Temporary Flight Restriction
- Wildfire Daily Fire Perimeter
- Contained
- Uncontained
- Trailhead
- Transmission Lines
- Primary Highway
- Secondary Highway
- Secondary Paved
- Secondary Dirt
- Secondary Paved
- Secondary Dirt
- Trail
- Paved
- Gravel Road
- Dirt Road
- Unimproved Road
- Forest Service Roads Closed
- Barricade
- Administrative FS Boundary
- Ranger District Boundary
- FS Wilderness Boundary
- Other Designated Boundary
- Indian Reservation
- Tribal Wilderness Boundary
- County Boundary
- Census Designated Place
- Township
- Protracted Section
- Section
- Historic Fire 2016-2018
- Historic Fire 2010-2015
- Historic Fire 2000-2009
- USFS Wilderness
- Tribal Wilderness Area
- American Indian Lands
- Forest Service Land
- American Indian Lands
- Bureau of Land Management Lands
- State Lands

0 1 2 Miles