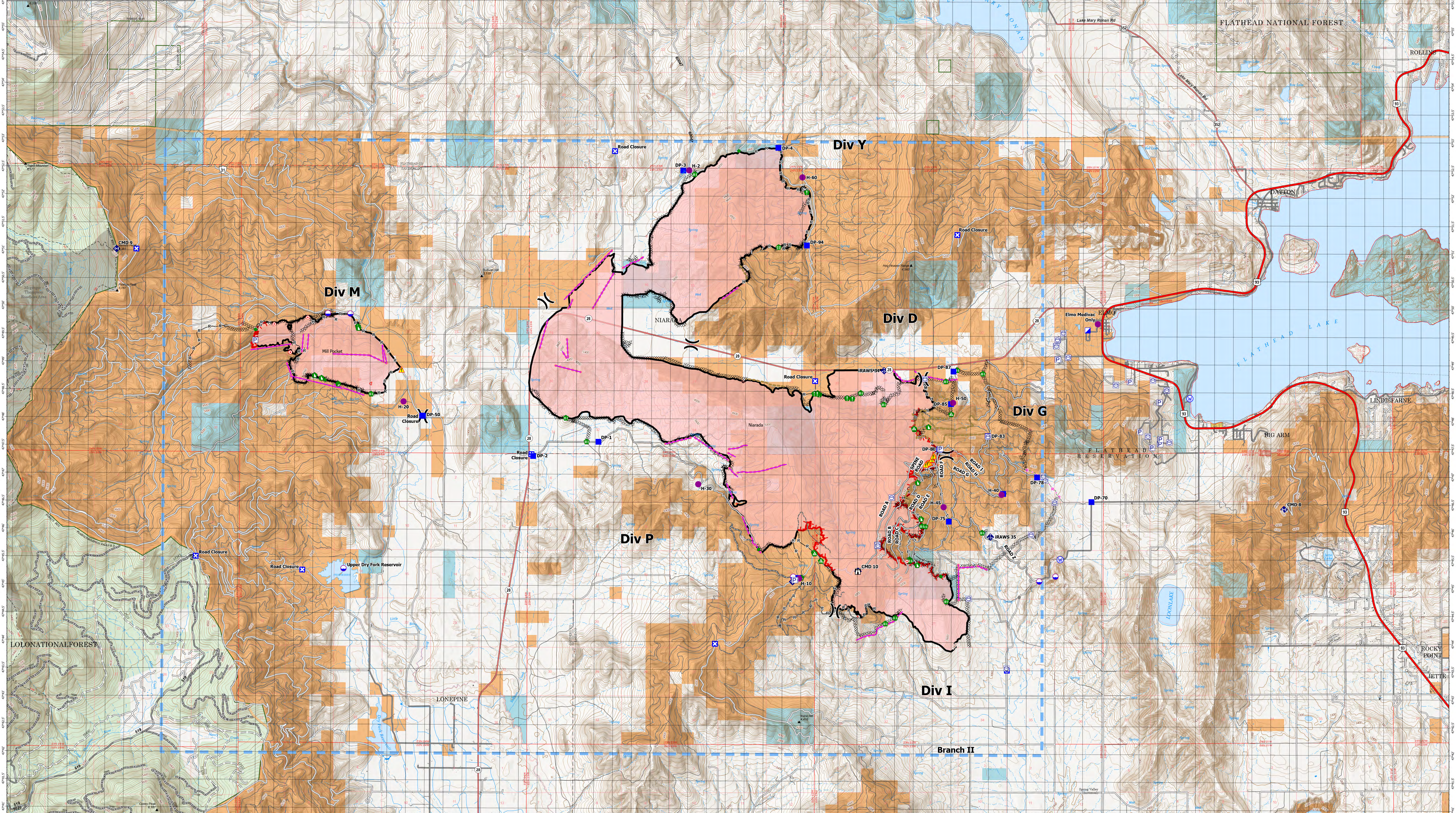


IncidentName	FeatureCategory	Label	Latitude	Longitude
Mill Pocket	Dip Site		47° 49.886' N	114° 41.037' W
Mill Pocket	Dip Site		47° 49.892' N	114° 41.634' W
Mill Pocket	Repeater	CMD 9	47° 51.039' N	114° 42.217' W
Mill Pocket	Helispot	H-20	47° 48.317' N	114° 39.608' W
Mill Pocket	Dip Site	Upper Dry Fork Reservoir	47° 45.315' N	114° 41.382' W
Niarada	Incident Command Post		47° 49.633' N	114° 41.383' W
Niarada	Dip Site		47° 45.210' N	114° 22.231' W
Niarada	Dip Site		47° 45.122' N	114° 22.662' W
Niarada	Dip Site		47° 45.198' N	114° 29.214' W
Niarada	Repeater	CMD 10	47° 45.300' N	114° 27.494' W
Niarada	Repeater	CMD 8	47° 46.423' N	114° 16.152' W
Niarada	Helispot	Elmo Medvac Only	47° 49.745' N	114° 21.113' W
Niarada	Helispot	H-10	47° 45.167' N	114° 29.052' W
Niarada	Helispot	H-15	47° 44.286' N	114° 29.568' W
Niarada	Helispot	H-2	47° 52.489' N	114° 32.021' W
Niarada	Helispot	H-30	47° 46.855' N	114° 31.749' W
Niarada	Helispot	H-40	47° 46.687' N	114° 23.668' W
Niarada	Helispot	H-45	47° 46.456' N	114° 25.210' W
Niarada	Helispot	H-50	47° 48.328' N	114° 24.967' W
Niarada	Helispot	H-60	47° 52.370' N	114° 29.000' W



Niarada
MT-FHA-000100
Fire Perimeter as of
08/11/2023 2230 hrs
20,365 Acres

Mill Pocket
MT-FHA-000101
Fire Perimeter as of
08/11/2023 2230 hrs
2,135 Acres

- | | | | | | | | | |
|--|--|--|---|--|---|---|---|---|
| <ul style="list-style-type: none">PumpWater TankDip SiteOtherHelispotDivision BreakIncident Command PostDrop PointClosureStaging Area | <ul style="list-style-type: none">LookoutHot Spot - Spot FireOtherStream CrossingResource LocationRepair PointLanding or Log DeckClosureDozer Push | <ul style="list-style-type: none">Mobile Weather UnitInternet AccessRepeaterHazardWater Source | <ul style="list-style-type: none">Completed Dozer LineCompleted Hand LineCompleted Mixed Construction LineCompleted Road as LinePlanned Dozer LinePlanned Road as LineAccess or Improved RoadFence - Cut/DamagedOther | <ul style="list-style-type: none">Repair LineRoad RepairTemporary Flight Restriction | <ul style="list-style-type: none">Wildfire Daily Fire PerimeterTrailhead | <ul style="list-style-type: none">Primary HighwaySecondary HighwaySecondary PavedSecondary DirtSecondary DirtHIFLD Plus GTAC Pedestrian PathNational Designated TrailGravel Road | <ul style="list-style-type: none">Dirt RoadUnimproved RoadForest Service Roads ClosedAdministrative FS BoundaryRanger District BoundaryIndian ReservationCounty BoundaryCensus Designated PlaceTownship | <ul style="list-style-type: none">SectionUSFS Roadless AreasAmerican Indian LandsForest Service LandBureau of Land Management LandsState Lands |
|--|--|--|---|--|---|---|---|---|

