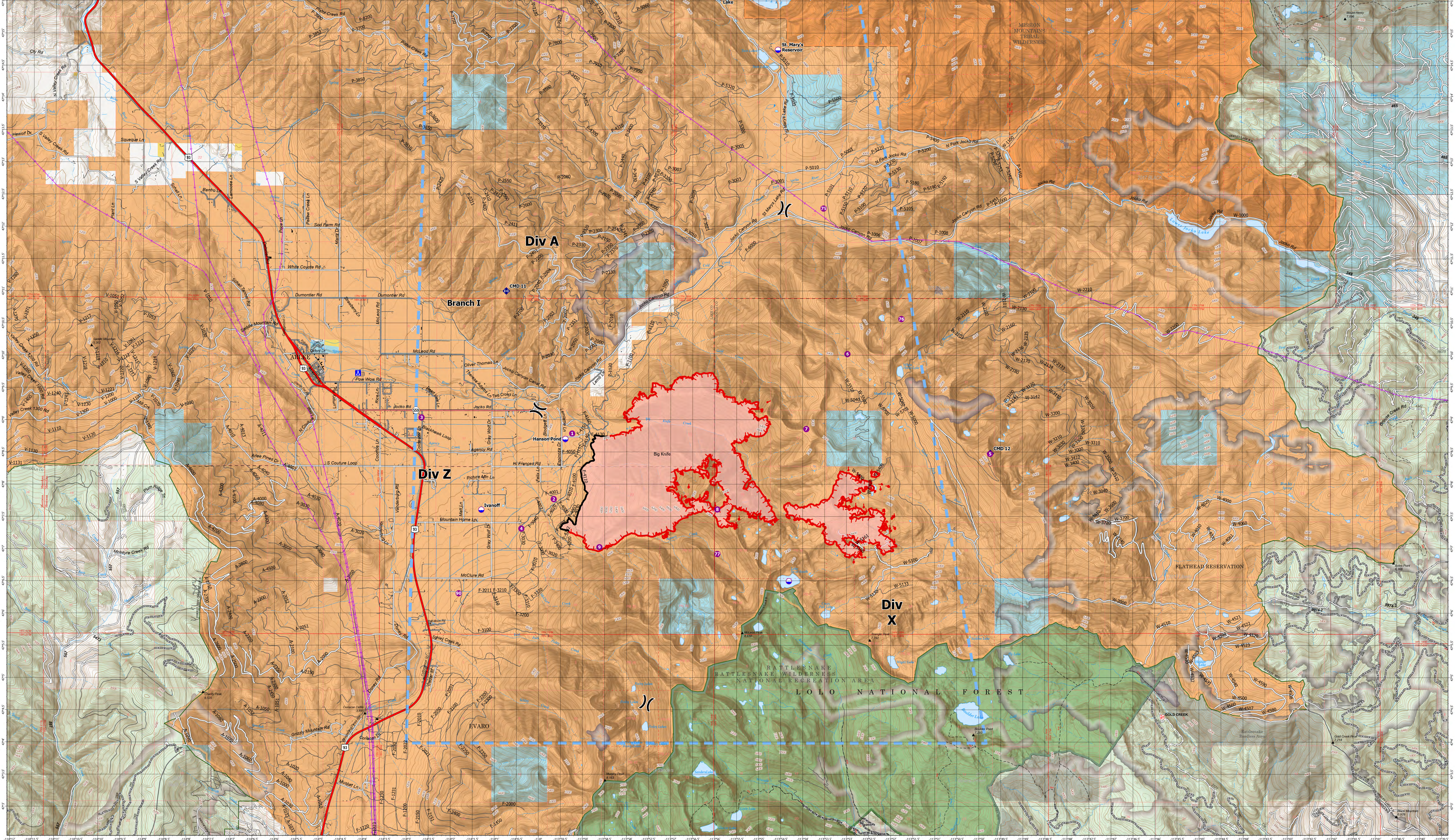


AIR OPERATIONS - BIG KNIFE

8/14/2023

| Incident Name/FC Point Type/Label | Comments | Latitude WGS84 DDM | Longitude WGS84 DDM |
|-----------------------------------|---|--------------------|---------------------|
| Big Knife Camp | | 47° 09.272' N | 113° 54.122' W |
| Big Knife Dip Site | Clear bucket or tank prior to use | 47° 06.553' N | 113° 54.334' W |
| Big Knife Dip Site | Hanson Pond 1 mile west of bottom of fire. 3500' elevation (Type 3 Helicopters/Type 2) | 47° 08.737' N | 113° 59.396' W |
| Big Knife Dip Site | Uncontaminated | 47° 07.624' N | 114° 01.305' W |
| Big Knife Dip Site | St. Mary's Lake 7 miles north of fire. 4000' elevation (Type 1 Helicopters) | 47° 15.747' N | 113° 55.678' W |
| Big Knife Dip Site | St. Mary's Reservoir | 47° 14.707' N | 113° 54.561' W |
| Big Knife Helispot 1 | | 47° 08.487' N | 113° 56.395' W |
| Big Knife Helispot 2 | Div z rear base of slope | 47° 07.827' N | 113° 59.659' W |
| Big Knife Helispot 3 | By Jim Swales | 47° 09.050' N | 114° 02.667' W |
| Big Knife Helispot 4 | Proposed Helispot, approved 8/8/2023 | 47° 08.487' N | 114° 01.305' W |
| Big Knife Helispot 5 | Jacko Lookout, Approved 8/11/2023 by Helicopter 353E | 47° 08.487' N | 113° 49.736' W |
| Big Knife Helispot 6 | Approved 8/12/2023 by Helicopter 353E | 47° 08.487' N | 113° 53.957' W |
| Big Knife Helispot 7 | Approved 8/11/2023 by Helicopter 353E | 47° 12.267' N | 113° 56.828' W |
| Big Knife Helispot 8 | Approved 8/11/2023 by Helicopter 353E | 47° 12.267' N | 113° 53.527' W |
| Big Knife Helispot 9 | Approved 8/11/2023 by Helicopter 353E | 47° 08.487' N | 113° 56.395' W |
| Big Knife Helispot 10 | Approved by Helicopter 353E 8/11/2023 | 47° 06.932' N | 113° 55.960' W |
| Big Knife Helispot 11 | Approved 8/11/2023 by Helicopter 353E | 47° 07.624' N | 113° 55.488' W |
| Big Knife Helispot 12 | Approved 8/11/2023 by Helicopter 353E | 47° 07.624' N | 113° 56.828' W |
| Big Knife Helispot 13 | Unapproved Modava; good for a type 3 ship. Ask for manager approval and possibly on airfile | 47° 06.322' N | 114° 01.810' W |
| Big Knife Repeater CMD 11 | | 47° 11.010' N | 114° 00.743' W |
| Big Knife Repeater CMD 12 | | 47° 08.487' N | 113° 47.713' W |



Big Knife MT-FHA-00094

Fire Perimeter as of 08/14/2023 0002 hrs
4,952 Acres

- Dip Site
 - Helispot
 - X Division Break
 - Camp
 - ◆ Repeater
- Temporary Flight Restriction
 - Wildfire Daily Fire Perimeter
 - Contained
 - Uncontained
 - Trailhead
 - Transmission Lines
- Primary Highway
 - Secondary Highway
 - Secondary Paved
 - Secondary Dirt
 - Secondary Paved
 - Secondary Dirt
 - Trail
 - Paved
- Gravel Road
 - Dirt Road
 - Unimproved Road
 - Forest Service Roads Closed
 - Railroad
 - Administrative FS Boundary
 - Ranger District Boundary
 - FS Wilderness Boundary
- Other Designated Boundary
 - Indian Reservation
 - Tribal Wilderness Boundary
 - County Boundary
 - Census Designated Place
 - Township
 - Protracted Section
 - Section
- Historic Fire 2016-2018
 - Historic Fire 2010-2015
 - Historic Fire 2000-2009
 - USFS Roadless Areas
 - USFS Wilderness
 - Tribal Wilderness Area
 - American Indian Lands
 - Forest Service Land
- American Indian Lands
 - Bureau of Land Management Lands
 - State Lands

