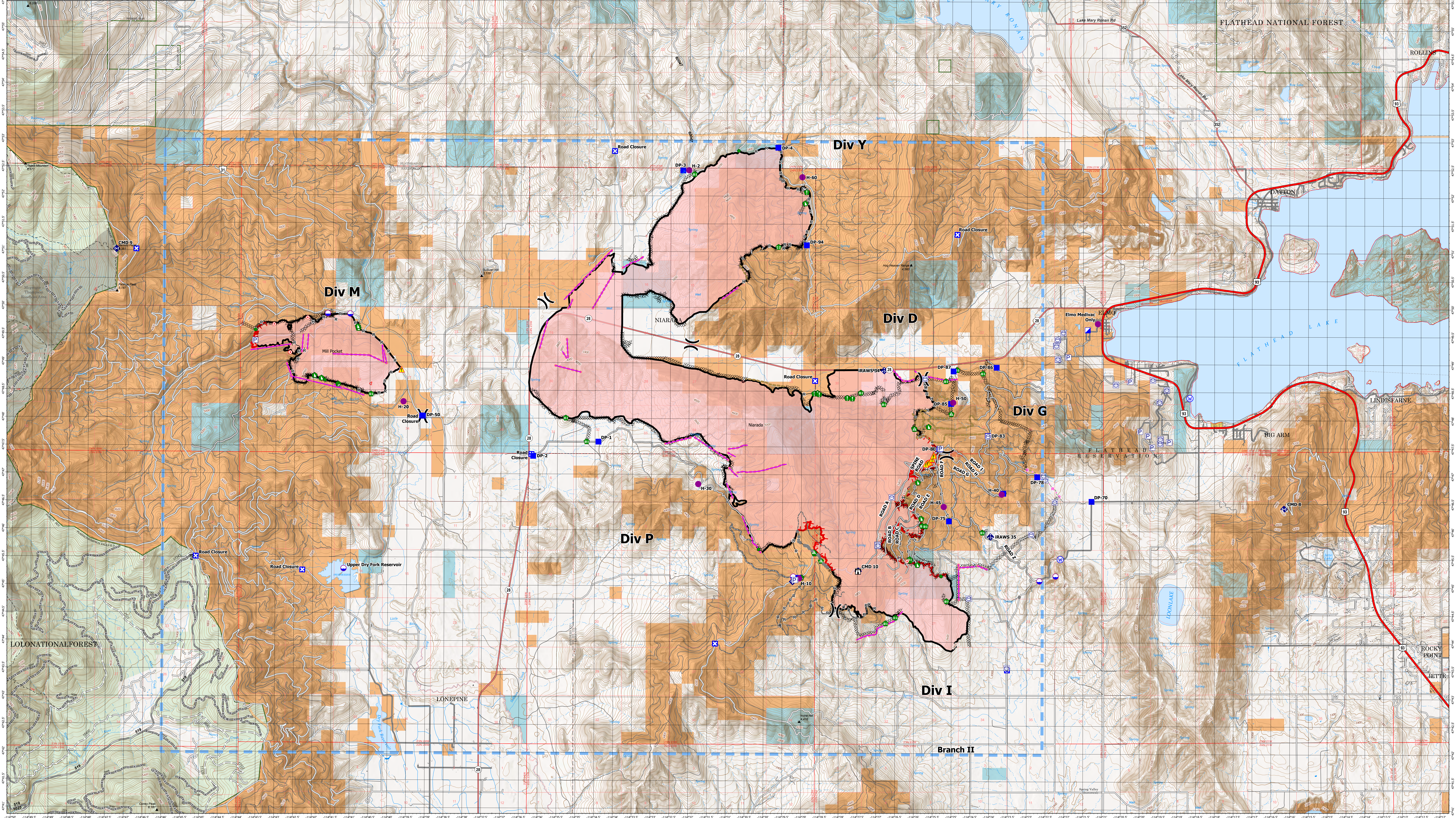


# AIR OPERATIONS - NIARADA / MILL POCKET

8/14/2023

IncidentName	FeatureCategory	Label	Latitude	Longitude
Mill Pocket	Dip Site		47° 49.886' N	114° 41.037' W
Mill Pocket	Dip Site		47° 49.892' N	114° 41.634' W
Mill Pocket	Repeater	CMD 9	47° 51.030' N	114° 42.277' W
Mill Pocket	Helispot	H-20	47° 48.317' N	114° 39.608' W
Mill Pocket	Dip Site	Upper Dry Fork Reservoir	47° 45.315' N	114° 41.182' W
Niarada	Incident Command Post		47° 49.633' N	114° 41.383' W
Niarada	Dip Site		47° 45.210' N	114° 22.231' W
Niarada	Dip Site		47° 45.122' N	114° 22.662' W
Niarada	Dip Site		47° 45.198' N	114° 23.214' W
Niarada	Repeater	CMD 10	47° 45.300' N	114° 27.494' W
Niarada	Repeater	CMD 8	47° 46.423' N	114° 16.152' W
Niarada	Helispot	Elmo Medvac Only	47° 49.745' N	114° 21.113' W
Niarada	Helispot	H-10	47° 45.167' N	114° 29.052' W
Niarada	Helispot	H-15	47° 44.286' N	114° 29.568' W
Niarada	Helispot	H-2	47° 52.489' N	114° 32.021' W
Niarada	Helispot	H-30	47° 46.855' N	114° 31.749' W
Niarada	Helispot	H-40	47° 46.682' N	114° 23.668' W
Niarada	Helispot	H-45	47° 46.450' N	114° 25.210' W
Niarada	Helispot	H-50	47° 48.328' N	114° 24.967' W
Niarada	Helispot	H-60	47° 52.370' N	114° 29.000' W



**Niarada**  
**MT-FHA-000100**  
 Fire Perimeter as of  
 08/13/2023 2328 hrs  
 20,365 Acres

**Mill Pocket**  
**MT-FHA-000101**  
 Fire Perimeter as of  
 08/13/2023 2328 hrs  
 2,135 Acres

<ul style="list-style-type: none"> <li> Pump</li> <li> Water Tank</li> <li> Dip Site</li> <li> Helispot</li> <li> Division Break</li> <li> Incident Command Post</li> <li> Drop Point</li> <li> Closure</li> <li> Staging Area</li> </ul>	<ul style="list-style-type: none"> <li> Lookout</li> <li> Hot Spot - Spot Fire</li> <li> Other</li> <li> Stream Crossing</li> <li> Resource Location</li> <li> Repair Point</li> <li> Landing or Log Deck</li> <li> Closure</li> <li> Dozer Push</li> </ul>	<ul style="list-style-type: none"> <li> Mobile Weather Unit</li> <li> Internet Access</li> <li> Repeater</li> <li> Hazard</li> <li> Water Source</li> </ul>	<ul style="list-style-type: none"> <li> Completed Dozer Line</li> <li> Completed Hand Line</li> <li> Completed Mixed Construction Line</li> <li> Completed Road as Line</li> <li> Planned Dozer Line</li> <li> Planned Road as Line</li> <li> Access or Improved Road</li> <li> Fence - Cut/Damaged</li> <li> Other</li> </ul>	<ul style="list-style-type: none"> <li> Repair Line</li> <li> Road Repair</li> <li> Retardant Drop</li> <li> Temporary Flight Restriction</li> </ul>	<ul style="list-style-type: none"> <li> Wildfire Daily Fire Perimeter</li> <li> Trailhead</li> </ul>	<ul style="list-style-type: none"> <li> Primary Highway</li> <li> Secondary Highway</li> <li> Secondary Paved</li> <li> Secondary Dirt</li> <li> Secondary Dirt</li> <li> MIFLD Plus GTAC Pedestrian Path</li> <li> Trail</li> <li> National Designated Trail</li> <li> Gravel Road</li> </ul>	<ul style="list-style-type: none"> <li> Dirt Road</li> <li> Unimproved Road</li> <li> Forest Service Roads Closed</li> <li> Administrative FS Boundary</li> <li> Range District Boundary</li> <li> Indian Reservation</li> <li> County Boundary</li> <li> Census Designated Place</li> <li> Township</li> </ul>	<ul style="list-style-type: none"> <li> Section</li> <li> USFS Roadless Areas</li> <li> American Indian Lands</li> <li> Forest Service Land</li> <li> Bureau of Land Management Lands</li> <li> State Lands</li> </ul>
---	---	---	--	--	--	--	---	--

