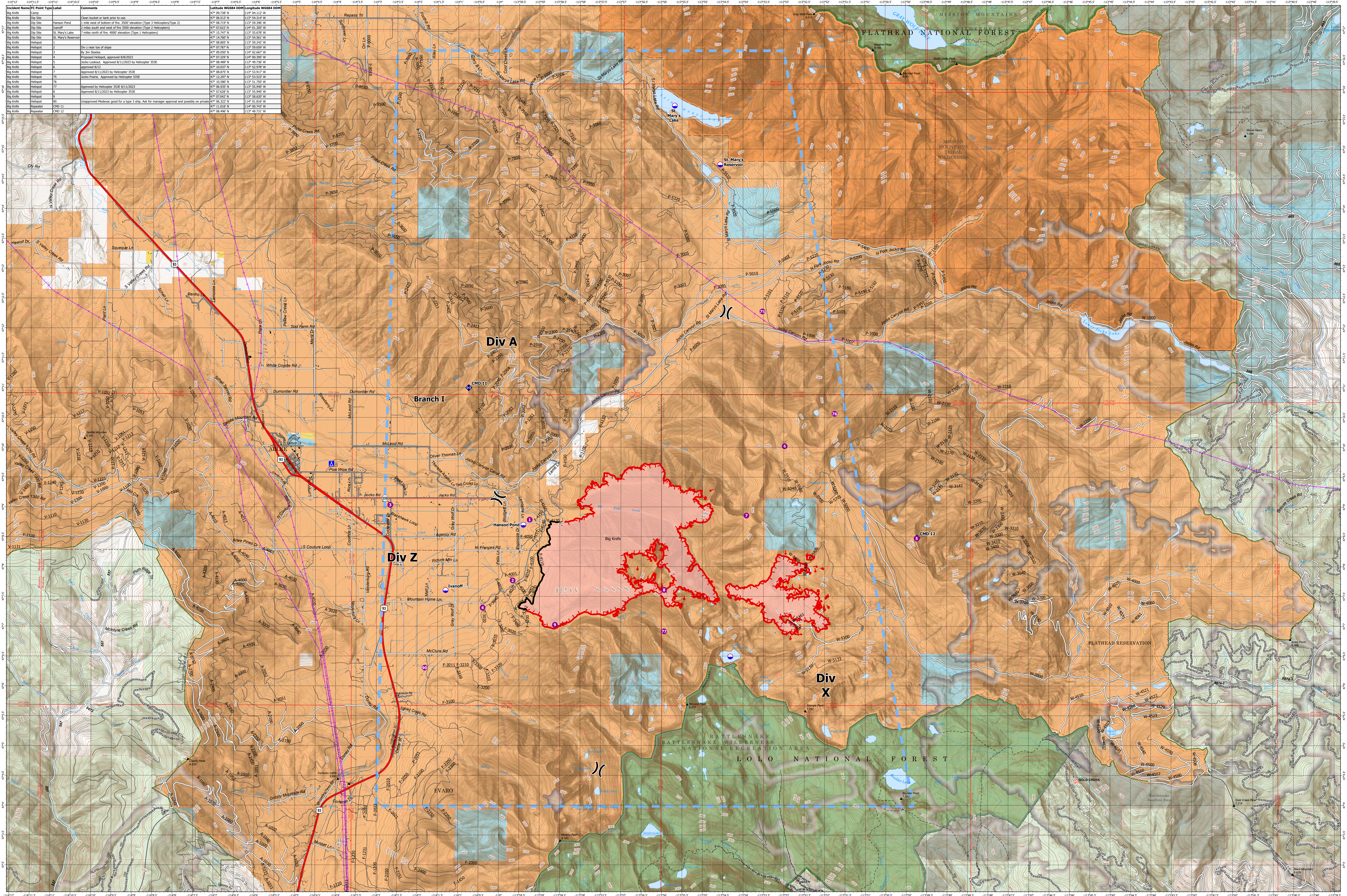


AIR OPERATIONS - BIG KNIFE

8/15/2023

Incident Name	FC Point Type	Label	Comments	Latitude WGS84 DDM	Longitude WGS84 DDM
Big Knife	Camp	Camp	Clear bucket or tank prior to use	47° 08.228' N	113° 54.122' W
Big Knife	Dip Site	Hanson Pond	1 mile west of bottom of the 3500' elevation (Type 3 Helicopters/Type 2)	47° 08.513' N	113° 54.314' W
Big Knife	Dip Site	Unstaff		47° 08.228' N	113° 54.300' W
Big Knife	Dip Site	St. Mary's Lake	7 miles north of fire, 4000' elevation (Type 1 Helicopters)	47° 15.747' N	113° 55.678' W
Big Knife	Dip Site	St. Mary's Reservoir		47° 14.767' N	113° 54.561' W
Big Knife	Helispot	1	Div 2 near top of slope	47° 07.827' N	113° 59.659' W
Big Knife	Helispot	2	By Jim Steeles	47° 09.050' N	114° 02.667' W
Big Knife	Helispot	3	Proposed Helispot, approved 8/8/2023	47° 07.329' N	114° 05.399' W
Big Knife	Helispot	4	Proposed Helispot, approved 8/11/2023 by Helicopter 353E	47° 08.489' N	114° 05.739' W
Big Knife	Helispot	5	Approved 8/12/2023	47° 08.859' N	114° 05.917' W
Big Knife	Helispot	6	Approved 8/11/2023 by Helicopter 353E	47° 12.287' N	113° 53.529' W
Big Knife	Helispot	75	Approved 8/11/2023	47° 08.959' N	113° 53.949' W
Big Knife	Helispot	76	Approved 8/11/2023 by Helicopter 353E	47° 07.628' N	113° 55.949' W
Big Knife	Helispot	77	Approved by Helicopter 353E 8/11/2023	47° 07.628' N	113° 55.949' W
Big Knife	Helispot	78	Approved 8/11/2023 by Helicopter 353E	47° 07.628' N	113° 55.949' W
Big Knife	Helispot	90	Unapproved Helispot: good for a type 3 ship. Ask for manager approval and possibly on private	47° 06.322' N	114° 01.816' W
Big Knife	Repeater	CMD 11		47° 11.810' N	114° 00.743' W
Big Knife	Repeater	CMD 12		47° 08.469' N	113° 47.711' W



Big Knife MT-FHA-00094

Fire Perimeter as of
08/14/2023 0002 hrs
4,952 Acres

- Dip Site
- Helispot
- X Division Break
- Camp
- ◆ Repeater
- Temporary Flight Restriction
- Wildfire Daily Fire Perimeter
- Contained
- Uncontained
- Trailhead
- Transmission Lines
- Primary Highway
- Secondary Highway
- Secondary Paved
- Secondary Dirt
- Secondary Paved
- Secondary Dirt
- Trail
- Paved
- Gravel Road
- Dirt Road
- Unimproved Road
- Forest Service Roads Closed
- Railroad
- Administrative FS Boundary
- Ranger District Boundary
- FS Wilderness Boundary
- Other Designated Boundary
- Indian Reservation
- Tribal Wilderness Boundary
- County Boundary
- Census Designated Place
- Township
- Pretracted Section
- Section
- Historic Fire 2016-2018
- Historic Fire 2010-2015
- Historic Fire 2000-2009
- USFS Roadless Areas
- USFS Wilderness
- Tribal Wilderness Area
- American Indian Lands
- Forest Service Land
- American Indian Lands
- Bureau of Land Management Lands
- State Lands

