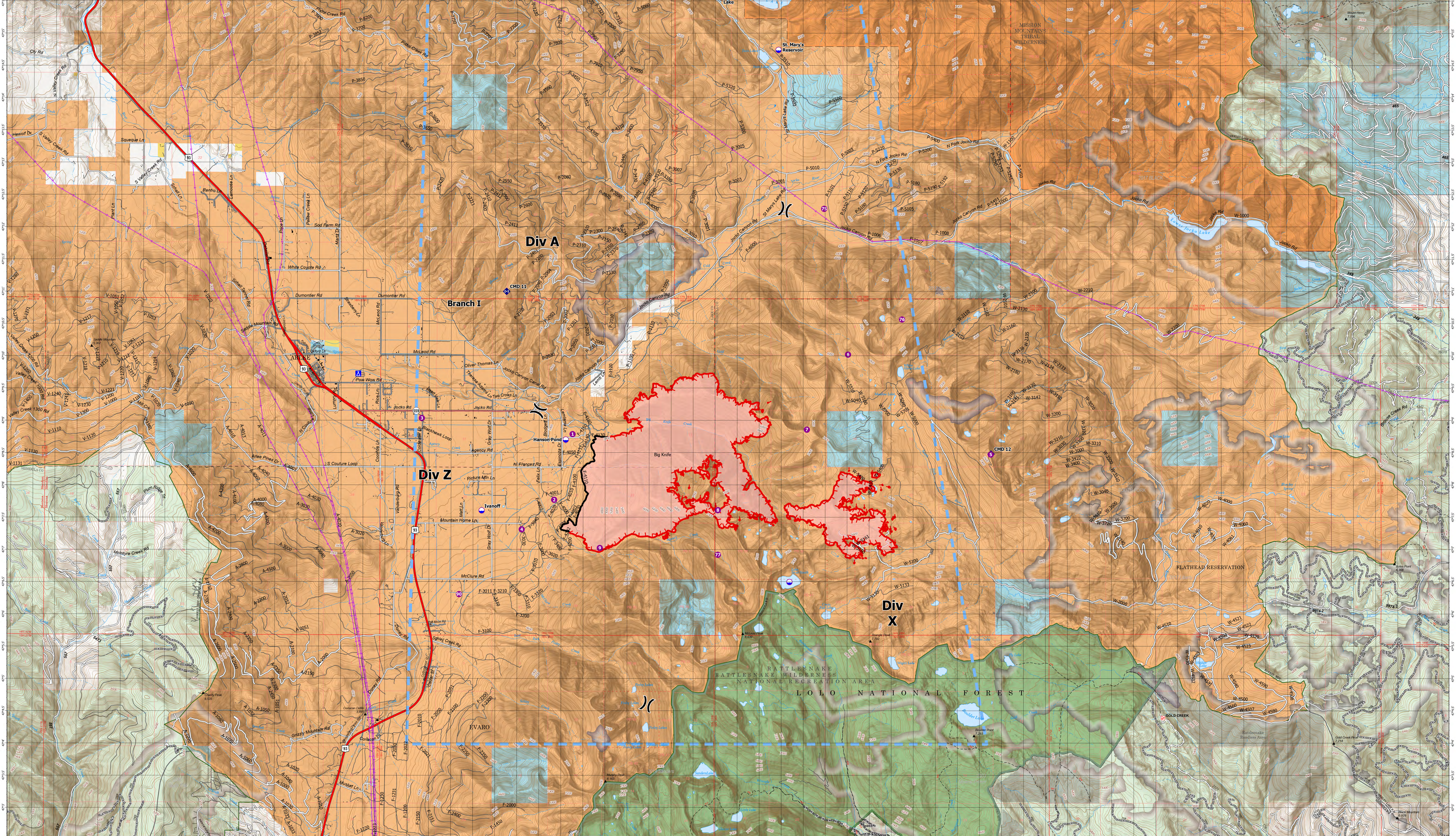


AIR OPERATIONS - BIG KNIFE

8/15/2023

Incident Name/FC Point Type/Label	Comments	Latitude WGS84 DDMM	Longitude WGS84 DDMM
Big Knife Camp		47° 09.272' N	113° 54.122' W
Big Knife Dip Site	Clear bucket or tank prior to use	47° 08.553' N	113° 54.334' W
Big Knife Dip Site	Hanson Pond 1 mile west of bottom of the 3500' elevation (Type 3 Helicopters/Type 2)	47° 08.737' N	113° 55.396' W
Big Knife Dip Site	Uncontaminated 2 miles south and west of the 3500' elevation (Type 2 Helicopters)	47° 07.624' N	113° 54.302' W
Big Knife Dip Site	St. Mary's Lake 7 miles north of the 4000' elevation (Type 1 Helicopters)	47° 15.747' N	113° 55.678' W
Big Knife Dip Site	St. Mary's Reservoir	47° 14.707' N	113° 54.561' W
Big Knife Helispot 1		47° 07.827' N	113° 55.678' W
Big Knife Helispot 2	Div 2 rear base of slope	47° 07.827' N	113° 55.678' W
Big Knife Helispot 3		47° 09.050' N	113° 55.667' W
Big Knife Helispot 4	Proposed Helispot, approved 8/8/2023	47° 08.427' N	113° 55.359' W
Big Knife Helispot 5	Jacko Lookout, Approved 8/11/2023 by Helicopter 353E	47° 08.489' N	113° 49.736' W
Big Knife Helispot 6	Approved 8/12	47° 08.050' N	113° 55.678' W
Big Knife Helispot 7	Approved 8/11/2023 by Helicopter 353E	47° 08.427' N	113° 55.359' W
Big Knife Helispot 7S	Jacko Peak, Approved by Helicopter 353E	47° 12.267' N	113° 55.527' W
Big Knife Helispot 7N		47° 15.947' N	113° 55.795' W
Big Knife Helispot 7Z	Approved by Helicopter 353E 8/11/2023	47° 06.932' N	113° 55.960' W
Big Knife Helispot 8	Approved 8/11/2023 by Helicopter 353E	47° 07.624' N	113° 55.396' W
Big Knife Helispot 9		47° 07.624' N	113° 56.820' W
Big Knife Helispot 9S	Unapproved Modava, good for a type 3 ship. Ask for manager approval and possibly on airfield	47° 06.322' N	113° 41.810' W
Big Knife Repeater CMD 11		47° 11.010' N	113° 47.713' W
Big Knife Repeater CMD 12		47° 08.409' N	113° 47.713' W



Big Knife MT-FHA-00094

Fire Perimeter as of
08/14/2023 0002 hrs
4,952 Acres

- Dip Site
- Helispot
- ⌘ Division Break
- Ⓜ Camp
- Ⓜ Repeater
- ▬ Temporary Flight Restriction
- ▬ Wildfire Daily Fire Perimeter
- ▬ Contained
- ▬ Uncontained
- ▬ Trailhead
- ▬ Transmission Lines
- ▬ Primary Highway
- ▬ Secondary Highway
- ▬ Secondary Paved
- ▬ Secondary Dirt
- ▬ Secondary Paved
- ▬ Secondary Dirt
- ▬ Trail
- ▬ Paved
- ▬ Gravel Road
- ▬ Dirt Road
- ▬ Unimproved Road
- ▬ Forest Service Roads Closed
- ▬ Railroad
- ▬ Administrative FS Boundary
- ▬ Ranger District Boundary
- ▬ FS Wilderness Boundary
- ▬ Other Designated Boundary
- ▬ Indian Reservation
- ▬ Tribal Wilderness Boundary
- ▬ County Boundary
- ▬ Census Designated Place
- ▬ Township
- ▬ Protected Section
- ▬ Section
- ▬ Historic Fire 2016-2018
- ▬ Historic Fire 2010-2015
- ▬ Historic Fire 2000-2009
- ▬ USFS Roadless Areas
- ▬ USFS Wilderness
- ▬ Tribal Wilderness Area
- ▬ American Indian Lands
- ▬ Forest Service Land
- ▬ American Indian Lands
- ▬ Bureau of Land Management Lands
- ▬ State Lands

0 1 2 Miles