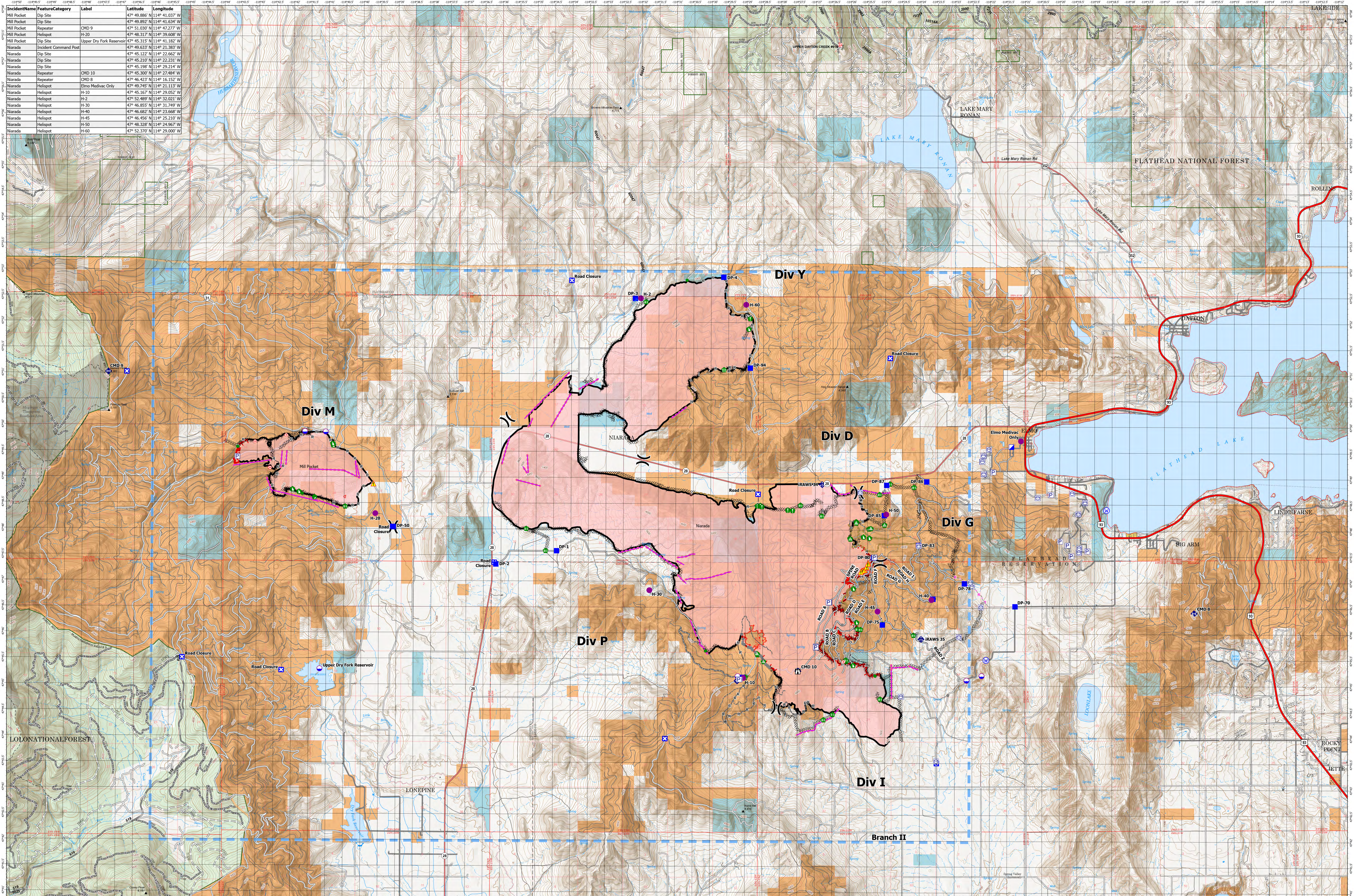


AIR OPERATIONS - NIARADA / MILL POCKET

8/16/2023



IncidentName	FeatureCategory	Label	Latitude	Longitude
Mill Pocket	Dip Site		47° 49.886' N	114° 41.037' W
Mill Pocket	Dip Site		47° 49.892' N	114° 41.634' W
Mill Pocket	Repeater	CMD 9	47° 51.030' N	114° 42.277' W
Mill Pocket	Helispot	H-20	47° 48.317' N	114° 39.608' W
Mill Pocket	Dip Site	Upper Dry Fork Reservoir	47° 45.315' N	114° 41.182' W
Niarada	Incident Command Post		47° 49.633' N	114° 21.383' W
Niarada	Dip Site		47° 45.122' N	114° 22.662' W
Niarada	Dip Site		47° 45.210' N	114° 22.210' W
Niarada	Dip Site		47° 45.198' N	114° 22.214' W
Niarada	Repeater	CMD 10	47° 45.300' N	114° 27.494' W
Niarada	Repeater	CMD 8	47° 46.423' N	114° 16.152' W
Niarada	Helispot	Elmo Medvac Only	47° 49.745' N	114° 21.113' W
Niarada	Helispot	H-10	47° 45.167' N	114° 29.052' W
Niarada	Helispot	H-2	47° 52.489' N	114° 32.011' W
Niarada	Helispot	H-30	47° 46.855' N	114° 31.769' W
Niarada	Helispot	H-40	47° 46.682' N	114° 23.668' W
Niarada	Helispot	H-45	47° 46.456' N	114° 25.210' W
Niarada	Helispot	H-50	47° 48.328' N	114° 24.967' W
Niarada	Helispot	H-60	47° 52.370' N	114° 29.000' W

Niarada
MT-FHA-000100
 Fire Perimeter as of
 08/15/2023 2153 hrs
 20,370 Acres

Mill Pocket
MT-FHA-000101
 Fire Perimeter as of
 08/15/2023 2153 hrs
 2,135 Acres

- P Pump
- Water Tank
- Dip Site
- Helispot
- Division Break
- Incident Command Post
- Drop Point
- Closure
- Staging Area
- Lookout
- Hot Spot - Spot Fire
- Other
- Stream Crossing
- Resource Location
- Repair Point
- Landing or Log Deck
- Closure
- Dozer Push
- Mobile Weather Unit
- Internet Access
- Repeater
- Hazard
- Water Source
- Completed Dozer Line
- Completed Hand Line
- Completed Mixed Construction Line
- Completed Road as Line
- Planned Dozer Line
- Planned Road as Line
- Access or Improved Road
- Fence - Cut/Damaged
- Other
- Repair Line
- Road Repair
- Retardant Drop
- Temporary Flight Restriction
- Wildfire Daily Fire Perimeter
- Trailhead
- Primary Highway
- Secondary Highway
- Secondary Paved
- Secondary Dirt
- Secondary Dirt
- FIELD Plus GTAC Pedestrian Path
- Trail
- National Designated Trail
- Gravel Road
- Dirt Road
- Unimproved Road
- Forest Service Roads Closed
- Administrative FS Boundary
- Range District Boundary
- Indian Reservation
- County Boundary
- Census Designated Place
- Township
- Section
- USFS Roadless Areas
- American Indian Lands
- Forest Service Land
- Bureau of Land Management Lands
- State Lands

