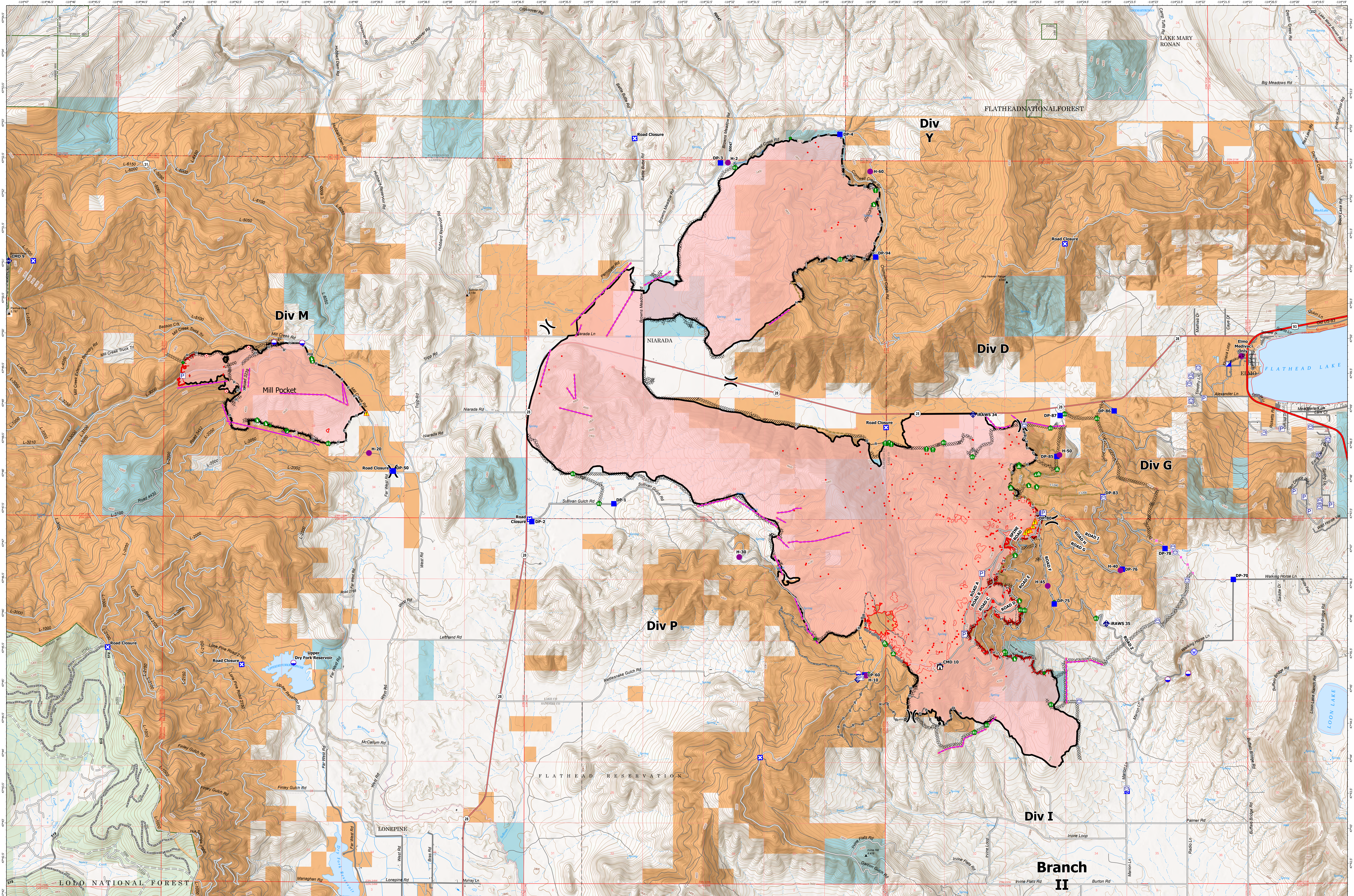


OPERATIONS MAP - NIARADA / MILL POCKET

8/16/2023



Niarada
MT-FHA-000100
 Fire Perimeter as of
 08/15/2023 2153 hrs
 20,370 Acres

Mill Pocket
MT-FHA-000101
 Fire Perimeter as of
 08/15/2023 2153 hrs
 2,135 Acres

<ul style="list-style-type: none"> — Contained — Uncontained — Wildfire Daily Fire Perimeter — Pump — Water Tank — Staging Area — Lookout — Hot Spot - Spot Fire 	<ul style="list-style-type: none"> X Division Break ■ Incident Command Post ■ Drop Point ■ Closure ■ Staging Area ■ Lookout ○ Hot Spot - Spot Fire 	<ul style="list-style-type: none"> ● Other ● Stream Crossing ● Resource Location ● Repair Point ● Landing or Log Deck ● Fence - Cut/Damaged ● Dozer Push 	<ul style="list-style-type: none"> ◆ Mobile Weather Unit ◆ Internet Access ◆ Repeater ▲ Hazard ● Water Source ● IR Isolated Heat Source ● Possible IR Heat Source 	<ul style="list-style-type: none"> — Completed Dozer Line — Completed Hand Line — Completed Mixed Construction Line — Completed Road as Line — Planned Dozer Line — Planned Road as Line — Access or Improved Road 	<ul style="list-style-type: none"> — Fence — Other — Repair Line — Road Repair — Retardant Drop — IR Heat Perimeter — IR Intense Heat 	<ul style="list-style-type: none"> — IR Scattered Heat — Primary Highway — Secondary Highway — Secondary Paved — Secondary Dirt — Secondary Dirt — HIFLD Plus GTAC Pedestrian Path 	<ul style="list-style-type: none"> — Trail — Gravel Road — Dirt Road — Unimproved Road — Forest Service Roads Closed — County Boundary — Township 	<ul style="list-style-type: none"> — Section — USFS Roadless Areas — American Indian Lands — Forest Service Land — State Lands
--	---	---	--	---	--	---	--	---

