

NOTE: Camping and dinner tonight will be at River Ranch ICP (1155 River Junction Drive) outside of Hungry Horse, MT – see map.

Incident Action Plan

Ridge Fire

MT-FNF-000518

P1QGT5 (0110)

Tuesday, August 08, 2023

Day: 0600 – 2200

Night: 1800 – 1000



Check-In,
PDF Maps, IAP,
CTRs, Shift Tickets
Demob

<https://linktr.ee/2023.ridge>

Finance Email: 2023.ridge.finance@firenet.gov

INCIDENT OBJECTIVES ICS-202	INCIDENT NAME	DATE PREPARED	TIME PREPARED
	RIDGE FIRE	8/07/2023	2030

OPERATIONAL PERIOD (DATE/TIME)
August 8, 2023 / Day Operational Period: 0600 – 2200

GENERAL CONTROL OBJECTIVES

Desired End State:
 All responders return home safely. Area and road closures are no longer needed to protect the public. The fire is no longer a threat to the communities of Hungry Horse, Martin City, Coram or West Glacier. The communication sites on Desert Mtn are safe from fire.

Prioritized Values at Risk:



1. Firefighters and members of the public.
2. Private Property West of FS Rd 38 and the communities of Martin City, Hungry Horse, Coram, and West Glacier.
3. Critical communications sites on Desert Mtn.
4. Infrastructure at Hungry Horse Dam
5. Firefighter Lookout Tower

Incident Objectives:

1. Manage risk to responders by ensuring hazards are identified, assessed and where possible mitigated. Decide if the residual risk is acceptable given the values at risk, along with the probability of achieving the objective.
2. Provide for public safety through dissemination of fire information and timely notification of potential closures and/or evacuation information.
3. Minimize the likelihood of fire impacting private land and infrastructure in the communities of Martin City, Hungry Horse, Coram, West Glacier and other outlying private property.
4. Protect critical communications sites on Desert Mtn from the fire.
5. Minimize the likelihood of fire impacting the visitors center at hungry Horse dam.
6. Protect the Lookout tower on Firefighter Mountain from the fire.

Leaders Intent:
 This fire is a full suppression fire. Currently we are using indirect tactics due to the heavy amount of dead and down trees, steep slopes and limited egress options. Our current actions are to keep the fire away from Martin City, Coram and the private land in the Hwy 2 corridor. We will continue scouting for options to keep the fire from crossing on to private land and will take action to protect the communication sites on Desert Mountain. All planned actions will take into consideration the probability of success with the resources we have and are likely to get.

<input checked="" type="checkbox"/> ORGANIZATION LIST (ICS 203)	<input checked="" type="checkbox"/> MEDICAL PLAN (ICS 206 & 206WF)	<input checked="" type="checkbox"/> SPOT WEATHER FORECAST
<input checked="" type="checkbox"/> ASSIGNMENT LIST (ICS 204)	<input checked="" type="checkbox"/> AIR OPS. SUMMARY (ICS 220)	<input type="checkbox"/> FIRE BEHAVIOR FORECAST
<input checked="" type="checkbox"/> COMMUNICATION PLAN (ICS 205)	<input checked="" type="checkbox"/> SAFETY MESSAGE	<input checked="" type="checkbox"/> UNIT LOG

ICS 202	PREPARED BY (PLANNING SECTION CHIEF) 	APPROVED BY (INCIDENT COMMANDER) 
---------	---	--

RIDGE Weather Forecast

Spot Forecast for Ridge Fire
National Weather Service Missoula MT
835 PM MDT Mon Aug 7 2023

Forecast is based on forecast start time of 0600 MDT on August 08.
If conditions become unrepresentative...contact the National Weather Service.

.DISCUSSION... Gradual increase in winds through Thursday. Decent RH recovery at night. High resolution models show isolated showers across northwest Montana Tuesday, but persistence and the dry airmass would say otherwise for this fire. A relatively dry front will traverse the region Wednesday. With this will come increased southwest winds. The probability for wind gusts exceeding 25 mph is 60 percent on Wednesday and 75 percent probability on Thursday (will have more of a due westerly component on Thursday).

.TUESDAY...

Sky/Weather.....Partly cloudy, a very slight chance for a shower between 4 and 6 pm MDT.
CWR (> 0.10 Inch)...10 percent.
Chance Lightning....Up to 10 percent.
LAL.....1.
Max Temperature.....76-81.
Min Humidity.....33-38 percent.
Wind (20 ft).....Downslope 2 to 5 mph becoming upslope 3 to 7 mph. Upper elevations may see more of a west-northwest 7 to 11 mph in the afternoon.
Haines Index.....2 very low.
Precip Amount.....0.00 inches.

.TUESDAY NIGHT...

Sky/Weather.....Partly cloudy.
CWR (> 0.10 Inch)...0 percent.
Chance Lightning....0 percent.
LAL.....1.
Min Temperature.....Valley: 47-50 Ridgetop: 51-54.
Max Humidity.....Ridgetop: 84-94 percent Valley: 95-100 percent.
Wind (20 ft).....Southwest 5-8 mph in the evening becoming variable 2-5 mph, except ridges may hold onto a southwest 7 to 10 mph through 10 pm. Ridgetops may experience east-northeast 5 to 8 mph after midnight.
Precip Amount.....0.00 inches.

.WEDNESDAY...

Sky/Weather.....Partly cloudy. Slight chance of rain showers in the afternoon.
CWR (> 0.10 Inch)...10 percent.
Chance Lightning....Up to 10 percent.
LAL.....1.
Max Temperature.....76-81.
Min Humidity.....28-33 percent.
Wind (20 ft).....Variable 2 to 4 mph becoming upslope 4 to 8 mph, then ridgetops and south aspects will experience southwest 8 to 15 mph with gusts to 25 mph by late afternoon.
Haines Index.....3 very low.
Precip Amount.....0.01 inches.

\$\$

Forecaster...Noble

ORGANIZATION ASSIGNMENT LIST

ICS-203

1. INCIDENT NAME

RIDGE FIRE

2. DATE PREPARED

8/07/2023

3. TIME PREPARED

1830 hrs

4. OPERATIONAL PERIOD

DATE: August 08, 2023

TIME Day 0600-2200

5. INCIDENT COMMANDER AND STAFF

INCIDENT COMMANDER	Shane Martin 406-533-9162
INCIDENT COMMANDER	
SAFETY OFFICER	Ian Quist
LINE SAFETY	
LIAISON OFFICER	
INFORMATION OFFICER	Max Rebholz
INFORMATION OFFICER	Ivan Huld
HUMAN RESOURCE SPECIALIST	

9. OPERATIONS SECTION

OPERATIONS SECTION CHIEF - LINE	Kyle Miller
OPERATIONS SECTION CHIEF - PLANS	Nick Schreiner 406-438-5923

6. AGENCY REPRESENTATIVES

α. BRANCH 1 DIVISIONS/GROUPS

AGENCY	NAME	BRANCH DIRECTOR		
US Forest Service	Bill Mulholland MJ Crandall (t)	DIVISION	ALPHA	Todd Ruzicka Wayne Bale-Rudnitski (t)
Resource Advisor	Nate Dieterich Chris Hoge	DIVISION/GROUP	BRAVO	Steve Houser
		DIVISION/GROUP	CHARLIE	Adam Booth
		DIVISION/GROUP	STRUCTURE	Carrie Thaler
		DIVISION/GROUP	NIGHT	Cliff Reynolds
		DIVISION/GROUP		

7. PLANNING SECTION

PLANNING SECTION CHIEF	Erin Ryan 406-560-3913
RESOURCE UNIT LEADER	
STATUS CHECK IN	Bob Bundy (t) 406-565-9247
SITUATION UNIT LEADER	
METEOROLOGIST	
GISS	RIST
GISS	

DIVISION/GROUP	
DIVISION/GROUP	
DIVISION/GROUP	
DIVISION/GROUP	
DIVISION/GROUP	
DIVISION/GROUP	

10. AIR BRANCH

TRAINING SPECIALIST	
AIR RESOURCE ADVISOR	
ITSS	

AIR OPERATIONS BRANCH DIRECTOR	
AIR SUPPORT GROUP SUPERVISOR	
AIR SUPPORT GROUP SUPERVISOR	
AIR TACTICAL GROUP SUPERVISOR	

8. LOGISTICS SECTION

LOGISTICS SECTION CHIEF	Dave Scherbel (t)
LOGISTICS SECTION CHIEF	Nancy Heggen (t) 406-217-7880
DEPUTY LOGISTICS SECTION CHIEF	
DEPUTY LOGISTICS SECTION CHIEF	
DEPUTY LOGISTICS SECTION CHIEF	
GROUND SUPPORT	Terry Thorpe, Jeff Jetter
BASE CAMP MANAGER	Lawrence Crofutt (t)

HELIBASE MANAGER	

11. MEDICAL SECTION

DEPUTY LOGISTICS SECTION CHIEF	
DEPUTY LOGISTICS SECTION CHIEF	
DEPUTY LOGISTICS SECTION CHIEF	
RECEIVING/DISTRIBUTION MANAGER	Gloria Bear
ORDERING MANAGER	
COMMUNICATION UNIT	
SECURITY MANAGER	Kevin Arnold
FOOD UNIT LEADER	
DRIVER	Michael Atkinson
DRIVER	Reuben Orozco
DRIVER	

MEDICAL OFFICER	
MEDICAL UNIT LEADER	Nicholas Arnett
AMBULANCE	Wilderness Medics Ambo
PARAMEDIC	

12. FINANCE SECTION

RECEIVING/DISTRIBUTION MANAGER	Gloria Bear
ORDERING MANAGER	
COMMUNICATION UNIT	
SECURITY MANAGER	Kevin Arnold
FOOD UNIT LEADER	
DRIVER	Michael Atkinson
DRIVER	Reuben Orozco
DRIVER	

FINANCE SECTION CHIEF	Kimie Denney 406-468-4545
FINANCE SECTION CHIEF	Deb Gross (t)
COST UNIT LEADER	
COMP/CLAIMS UNIT LEADER	
PROCUREMENT UNIT LEADER	
EQUIPMENT TIME RECORDER	
PERSONNEL TIME RECORDER	

PREPARED BY (PSC): Erin Ryan

ASSIGNMENT LIST				1.Branch		2. Division/Group	
						BRAVO	
3. Incident Name		Ridge		4. Operational Period			
				Date: 8/8/2023		Time: 0600-2200	
5. Operations Personnel							
Planning Operations		Nick Schreiner		Division/Group Supervisor		Steve Houser	
Line Operations		Kyle Miller					
Safety Officer		Ian Quist		Air Operations			
6. Resources Assigned This Period							
Request #	Position / Resource	Last Shift	Leader	No. EMT	No. Pers	Drop Off PT./Time	Pick Up PT./Time
O-11	TFLD	8/19	Mike Greer	0	1	ICP/0600	River Ranch ICP/2200
O-3	TFLD (T)	8/15	Casey Hamilton	0	1	ICP/0600	River Ranch ICP/2200
O-2	HEQB	8/16	Isaac Gansberg	0	1	ICP/0600	River Ranch ICP/2200
E-2	HETF	8/15	Siderius	0	7	ICP/0600	River Ranch ICP/2200
E-34	LOGL	8/18	James Slack	0	1	ICP/0600	River Ranch ICP/2200
E-35	LOGL	8/18	Brandon Clouse	0	1	ICP/0600	River Ranch ICP/2200
O-16	TFLD	8/17	Yuri Kozicky	0	1	ICP/0600	River Ranch ICP/2200
O-21	TFLD(T)	8/17	Karl Cook	0	1	ICP/0600	River Ranch ICP/2200
E-21	FELB	8/19	Shelby George	0	1	ICP/0600	River Ranch ICP/2200
E-63	WTS2 Rocky Mtn Wildland	8/19	Craig Lodge	0	1	ICP/0600	River Ranch ICP/2200
E-50	HETF	8/19	Russ Miller	0	5	ICP/0600	River Ranch ICP/2200
C-1	T2IA Great Northern	8/14	Brian Buckley	5	19	ICP/0600	River Ranch ICP/2200
C-7	T2IA Keystone	8/20	Jake Novitsky	0	21	ICP/0600	River Ranch ICP/2200
E-38	CHP2 Brothers Chipping #2	8/19	Anlyn Flake	0	2	ICP/0600	River Ranch ICP/2200
E-39	CHP2 Brothers Chipping #1	8/19	Adam McKenny	0	2	ICP/0600	River Ranch ICP/2200
E-41	ENG6 Ashley 611	8/19	Noah Shepperson	0	3	ICP/0600	River Ranch ICP/2200
E-49	PUP1 Ashley Chase	8/19	Zachery Belge	0	2	ICP/0600	River Ranch ICP/2200
E-61	*WTS2 Martin City FD	8/13	Don Mills	0	1	ICP/0600	River Ranch ICP/2200
E-60	*E382 Bigfork FD		Sean Reffner	2	3	ICP/0600	River Ranch ICP/2200
E-62	E582 Somers FD		Tom Havens	1	3	ICP/0600	River Ranch ICP/2200
O-6	REAF	8/17	Chris Hoge	0	1	ICP/0600	HHRD/2200
	*READ		Nate Dieterich	0	1	ICP/0600	HHRD/2200
	*READ		Adam Kane	0	1	ICP0600	HHRD/2200
7. Control Operations							
Task: Continue to construct indirect fuelbreak/fireline from DIV A/B break to the north to minimize impacts to private property and infrastructure. Utilize aerial resources as needed. Develop medical extraction plans and establish medivac sites where needed.							
Purpose: Safely implement indirect attack options to contain the fire while minimizing damages to values at risk.							
End State: Fire is safely extinguished and negative impacts to private land and infrastructure are minimized.							
8. Special Instructions:							
Maintain the appropriate operational pace given the current and expected fire behavior. Coordinate with the READ concerning bull trout and cutthroat trout habitat. Be bear aware.							
<i>*denotes local lent resource.</i>							
9. Division/Group Communication Summary							
Function	Frequency - RX	Frequency - TX	Tone	Channel	Comments		
Command	167.2500	162.2625	107.23	6			
Forest Repeater	173.1125	164.3750	107.2	8			
Tac 2	172.3750	172.3750	107.2	2			
Primary A/G	173.8375	173.8375	0.0	10			
Prepared by (RESL)		Approved by (PSC)		Date		Time	
		E Ryan					

INCIDENT RADIO COMMUNICATIONS PLAN			1. Incident Name			2. Date Time Prepared		3. Operational Period Date/Time	
			RIDGE FIRE - FNF TYPE III			05 AUG 23/2000		06 AUG 23 0600 to 2200	
4. Basic Radio Channel Utilization Mode: W= Wideband, N= Narrowband, D= Digital, M= Mixed									
Radio Type	CH #	Function	Frequency	Tone/NAC	Mode	TGID	Assignment	Remarks	
	1	Tactical 1	RX: 172.2250 TX: 172.2250	107.2 107.2	M A	1	TAC1	DIV A	
	2	Tactical 2	RX: 172.3750 TX: 172.3750	107.2 107.2	M A	1	TAC2	DIV B	
	3	Tactical 3	RX: 154.3025 TX: 154.3025	107.2 107.2	M A	1	TAC3	DIV C	
	4	Work/Tactical/Comm Use	RX: 168.1625 TX: 168.1625	∅ 167.9	M A	1	FNF WRK1	Structure Group / DIV Night	
	5	Command Direct	RX: 167.2500 TX: 167.2500	107.2 107.2	M A	1	CMD DIR	Ridge Command Direct	
	6	Command Repeater	RX: 167.2500 TX: 162.2625	107.2 107.2	M A	1	CMD RPTR	Ridge Command Repeat	
	7	Forest Direct	RX: 173.1125 TX: 173.1125	∅ 123.0	M A	1	FNF DIR		
	8	Forest Repeater	RX: 173.1125 TX: 164.3750	∅ 107.2	M A	1	DESERT	Kalispell Dispatch Repeater	
	9	Forest Air-to-Ground Pri	RX: 169.1250 TX: 169.1250	∅ 167.9	M A	1	FNF A/G		
	10	Area Air-to-Ground 2nd	RX: 173.8375 TX: 173.8375	∅ 123.0	M A	1	RIDGE A/G	A/G Primary	
	11	Area Air-to-Ground 3rd	RX: 168.3875 TX: 168.3875	∅ 123.0	M A	1	3A/G 52		
	12	MT Mutual Air-to-Ground Pri	RX: 151.2200 TX: 151.2200	∅ 156.7	M A	1	YELLOW		
	13	MT Mutual Air-to-Ground 2nd	RX: 151.4000 TX: 151.4000	∅ 156.7	M A	1	ORANGE		
	14	MT Mutual Fire Tac	RX: 154.0700 TX: 154.0700	∅ 156.7	M A	1	RED		
	15	MT Mutual Med A/G	RX: 155.3400 TX: 155.3400	∅ 156.7	M A	1	TAN		
	16	Nat'l Air Guard A/G	RX: 168.6250 TX: 168.6250	∅ 110.9	M A	1	AIRGUARD		
5. Prepared by (Communications Unit)			ICP ► WEST GLACIER KOA						
Neal Maben - FNF Radio/Communications									

Note: This is not a standard NWCG ICS205 Form

Public Information

FIRE INFORMATION CONTACT -

Please direct any public or media inquiries to the Information Center at:

406-998-6074

(staffed from 0800 – 2000)

or ***2023.ridge@firenet.gov***

PICTURES, NEEDED!! Your photos help tell this fire's story and justify our hard work! Take photos of the fire and firefighters working and Airdrop to a PIO's phone. Be sure to provide information, and your contact information. Looking for landscape photos of steep rocky terrain, active fire behavior, as well as crews working. And as always please make sure to have all PPE on if sending photos of firefighters. Thanks!

Please email/text/airdrop your photos to:

406-880-8090;

2023.ridge@firenet.gov

Shower Hours @ Ridge ICP

0630 – 1330

1630 – 2300

Finance Message

Please Submit Time to
2023.ridge.finance@firenet.gov

Personnel – In subject line put CTR
and your resource order #

Equipment – In subject line put ST
and your resource order #

Breakfast @ Ridge ICP

Breakfast 0530 – 0900

Dinner @ River Ranch ICP

Dinner 1800 – 2200

Weed Wash @ Hungry Horse Ranger District

0700 – 1900

First source of supply is Cache, shaded blocks indicate items available thru Northern Rockies Cache. Items requiring an approved Property Loss and Damage form are in a separate list at the bottom.												
PART	034/341	360/MS360	MS361	MS362	038/381	044/MS440	MS441	460/MS461	MS462	0640/650	MS560	MS580
Spark Plug (NFES# 000344)	Bosch WSR6F NGK BPMR7A Champion RC16Y	Bosch WSR6F NGK BPMR7A Champion RC16Y	Bosch WSR6F NGK BPMR7A Champion RC16Y	Bosch WSR6F NGK BPMR7A Champion RC16Y	Bosch WSR6F NGK BPMR7A Champion RC16Y	Bosch WSR6F NGK BPMR7A Champion RC16Y	Bosch WSR6F NGK BPMR7A Champion RC16Y	Bosch WSR6F NGK BPMR7A Champion RC16Y	Bosch USR7AC NGK CVMR6H	Bosch WSR6F NGK BPMR7A Champion RC16Y	Bosch WSR6F NGK BPMR7A Champion RC16Y	Bosch WSR6F NGK BPMR7A Champion RC16Y
Needle Cage Bearing (NFES# 066565)	9512-933-2380	9512-933-2380	9512-933-2380	9512-933-2380	9512-933-3150	9512-933-2380	9512-933-2380	9512-933-2380	9512-933-2380	9512-933-2382	9512-933-2382	9512-933-3170
Retaining Washer for Rim Sprocket	0000-958-1022	0000-958-1032	0000-958-1032	0000-958-1032	0000-958-1231	0000-958-1032	0000-958-1032	0000-958-1032	0000-958-1032	0000-958-1032	0000-958-1032	0000-958-1236
E Clip (NFES# 066517)	9460-624-0801	9460-624-0801	9460-624-0801	9460-624-0801	9460-624-1001	9460-624-0801	9460-624-0801	9460-624-0801	9460-624-0801	9460-624-0801	9460-624-0801	9460-624-1001
Fuel Filter	0000-350-3504	0000-350-3504	0000-350-3504	0000-350-3504	0000-350-3504	0000-350-3504	0000-350-3504	0000-350-3504	0000-350-3518	0000-350-3504	0000-350-3504	0000-350-3504
Air Filter - HD (NFES# 066756)	1125-120-1626	1125-120-1612	1135-120-1600	1140-140-4401	1119-120-1611	0000-140-4402	0000-120-1654	0000-120-1654	1142-140-4402	0000-140-4402	0000-140-4402	0000-140-4402
Pre Filter - OEM	N/A	N/A	N/A	N/A	1119-120-1500	0000-141-0300	0000-141-0300	0000-141-0300	N/A	0000-141-0300	0000-141-0300	0000-141-0300
Bar Nut (NFES# 06661)	0000-955-0801	0000-955-0801	0000-955-0801	0000-955-0801	0000-955-0801	0000-955-0801	0000-955-0801	0000-955-0801	0000-955-0803	0000-955-0801	0000-955-0801	0000-955-0903
Inner Slide Plate	1122-664-1000	1122-664-1000	1122-664-1000	1122-664-1000	1119-664-1000	1128-664-1001	1138-664-1000	1128-664-1001	1128-664-1001	1128-664-1001	1128-664-1001	1124-664-1001
STIHL RAPID - Super (RS)												
Chain 3/8" PITCH - .050" GA - DR												
20" - 72 DR	3623-005-0072	3623-005-0072	3623-005-0072	3623-005-0072	3623-005-0072	3623-005-0072	3623-005-0072	3623-005-0072	3623-005-0072	3623-005-0072	3623-005-0072	3623-005-0072
25" - 84 DR (NFES# 006500)	3623-005-0084	3623-005-0084	3623-005-0084	3623-005-0084	3623-005-0084	3623-005-0084	3623-005-0084	3623-005-0084	3623-005-0084	3623-005-0084	3623-005-0084	3623-005-0084
28" - 91 DR	3623-005-0091	3623-005-0091	3623-005-0091	3623-005-0091	3623-005-0091	3623-005-0091	3623-005-0091	3623-005-0091	3623-005-0091	3623-005-0091	3623-005-0091	3623-005-0091
32" - 105 DR	N/A	N/A	N/A	N/A	N/A	3623-005-0105	3623-005-0105	3623-005-0105	3623-005-0105	3623-005-0105	3623-005-0105	3623-005-0105
STIHL RAPID - Super - Full Skip (RSF)												
Chain 3/8" PITCH - .050" GA - DR												
20" - 72 DR	N/A	3676-005-0072	3676-005-0072	3676-005-0072	3676-005-0072	3676-005-0072	3676-005-0072	3676-005-0072	3676-005-0072	3676-005-0072	3676-005-0072	3676-005-0072
25" - 84 DR	3676-005-0084	3676-005-0084	3676-005-0084	3676-005-0084	3676-005-0084	3676-005-0084	3676-005-0084	3676-005-0084	3676-005-0084	3676-005-0084	3676-005-0084	3676-005-0084
28" - 91 DR	3676-005-0091	3676-005-0091	3676-005-0091	3676-005-0091	3676-005-0091	3676-005-0091	3676-005-0091	3676-005-0091	3676-005-0091	3676-005-0091	3676-005-0091	3676-005-0091
32" - 105 DR	N/A	N/A	N/A	N/A	N/A	3676-005-0105	3676-005-0105	3676-005-0105	3676-005-0105	3676-005-0105	3676-005-0105	3676-005-0105
Bar oil: Quantity - Gallon	NFES # 1880											
Bar oil: Quantity - Quart	NFES # 1869											
2 Cycle Oil: Quantity - Quart	NFES # 0341											

The following parts require an approved Property Loss & Damage form prior to ordering:

Part	3003-000-8822	3003-000-8830	3003-000-8838	3003-000-8846	1128-007-1000	1128-007-1001	1128-007-1003	1128-007-1004	1128-007-1005	1128-007-1006	1128-007-1007	1128-007-1008	1128-007-1009	1128-007-1010	1128-007-1011	1128-007-1012	1128-007-1013	1128-007-1014	1128-007-1015	1128-007-1016	1128-007-1017	1128-007-1018	1128-007-1019	1128-007-1020	1128-007-1021	1128-007-1022	1128-007-1023	1128-007-1024	1128-007-1025	1128-007-1026	1128-007-1027	1128-007-1028	1128-007-1029	1128-007-1030	1128-007-1031	1128-007-1032	1128-007-1033	1128-007-1034	1128-007-1035	1128-007-1036	1128-007-1037	1128-007-1038	1128-007-1039	1128-007-1040	1128-007-1041	1128-007-1042	1128-007-1043	1128-007-1044	1128-007-1045	1128-007-1046	1128-007-1047	1128-007-1048	1128-007-1049	1128-007-1050	1128-007-1051	1128-007-1052	1128-007-1053	1128-007-1054	1128-007-1055	1128-007-1056	1128-007-1057	1128-007-1058	1128-007-1059	1128-007-1060	1128-007-1061	1128-007-1062	1128-007-1063	1128-007-1064	1128-007-1065	1128-007-1066	1128-007-1067	1128-007-1068	1128-007-1069	1128-007-1070	1128-007-1071	1128-007-1072	1128-007-1073	1128-007-1074	1128-007-1075	1128-007-1076	1128-007-1077	1128-007-1078	1128-007-1079	1128-007-1080	1128-007-1081	1128-007-1082	1128-007-1083	1128-007-1084	1128-007-1085	1128-007-1086	1128-007-1087	1128-007-1088	1128-007-1089	1128-007-1090	1128-007-1091	1128-007-1092	1128-007-1093	1128-007-1094	1128-007-1095	1128-007-1096	1128-007-1097	1128-007-1098	1128-007-1099	1128-007-1100	1128-007-1101	1128-007-1102	1128-007-1103	1128-007-1104	1128-007-1105	1128-007-1106	1128-007-1107	1128-007-1108	1128-007-1109	1128-007-1110	1128-007-1111	1128-007-1112	1128-007-1113	1128-007-1114	1128-007-1115	1128-007-1116	1128-007-1117	1128-007-1118	1128-007-1119	1128-007-1120	1128-007-1121	1128-007-1122	1128-007-1123	1128-007-1124	1128-007-1125	1128-007-1126	1128-007-1127	1128-007-1128	1128-007-1129	1128-007-1130	1128-007-1131	1128-007-1132	1128-007-1133	1128-007-1134	1128-007-1135	1128-007-1136	1128-007-1137	1128-007-1138	1128-007-1139	1128-007-1140	1128-007-1141	1128-007-1142	1128-007-1143	1128-007-1144	1128-007-1145	1128-007-1146	1128-007-1147	1128-007-1148	1128-007-1149	1128-007-1150	1128-007-1151	1128-007-1152	1128-007-1153	1128-007-1154	1128-007-1155	1128-007-1156	1128-007-1157	1128-007-1158	1128-007-1159	1128-007-1160	1128-007-1161	1128-007-1162	1128-007-1163	1128-007-1164	1128-007-1165	1128-007-1166	1128-007-1167	1128-007-1168	1128-007-1169	1128-007-1170	1128-007-1171	1128-007-1172	1128-007-1173	1128-007-1174	1128-007-1175	1128-007-1176	1128-007-1177	1128-007-1178	1128-007-1179	1128-007-1180	1128-007-1181	1128-007-1182	1128-007-1183	1128-007-1184	1128-007-1185	1128-007-1186	1128-007-1187	1128-007-1188	1128-007-1189	1128-007-1190	1128-007-1191	1128-007-1192	1128-007-1193	1128-007-1194	1128-007-1195	1128-007-1196	1128-007-1197	1128-007-1198	1128-007-1199	1128-007-1200	1128-007-1201	1128-007-1202	1128-007-1203	1128-007-1204	1128-007-1205	1128-007-1206	1128-007-1207	1128-007-1208	1128-007-1209	1128-007-1210	1128-007-1211	1128-007-1212	1128-007-1213	1128-007-1214	1128-007-1215	1128-007-1216	1128-007-1217	1128-007-1218	1128-007-1219	1128-007-1220	1128-007-1221	1128-007-1222	1128-007-1223	1128-007-1224	1128-007-1225	1128-007-1226	1128-007-1227	1128-007-1228	1128-007-1229	1128-007-1230	1128-007-1231	1128-007-1232	1128-007-1233	1128-007-1234	1128-007-1235	1128-007-1236	1128-007-1237	1128-007-1238	1128-007-1239	1128-007-1240	1128-007-1241	1128-007-1242	1128-007-1243	1128-007-1244	1128-007-1245	1128-007-1246	1128-007-1247	1128-007-1248	1128-007-1249	1128-007-1250	1128-007-1251	1128-007-1252	1128-007-1253	1128-007-1254	1128-007-1255	1128-007-1256	1128-007-1257	1128-007-1258	1128-007-1259	1128-007-1260	1128-007-1261	1128-007-1262	1128-007-1263	1128-007-1264	1128-007-1265	1128-007-1266	1128-007-1267	1128-007-1268	1128-007-1269	1128-007-1270	1128-007-1271	1128-007-1272	1128-007-1273	1128-007-1274	1128-007-1275	1128-007-1276	1128-007-1277	1128-007-1278	1128-007-1279	1128-007-1280	1128-007-1281	1128-007-1282	1128-007-1283	1128-007-1284	1128-007-1285	1128-007-1286	1128-007-1287	1128-007-1288	1128-007-1289	1128-007-1290	1128-007-1291	1128-007-1292	1128-007-1293	1128-007-1294	1128-007-1295	1128-007-1296	1128-007-1297	1128-007-1298	1128-007-1299	1128-007-1300	1128-007-1301	1128-007-1302	1128-007-1303	1128-007-1304	1128-007-1305	1128-007-1306	1128-007-1307	1128-007-1308	1128-007-1309	1128-007-1310	1128-007-1311	1128-007-1312	1128-007-1313	1128-007-1314	1128-007-1315	1128-007-1316	1128-007-1317	1128-007-1318	1128-007-1319	1128-007-1320	1128-007-1321	1128-007-1322	1128-007-1323	1128-007-1324	1128-007-1325	1128-007-1326	1128-007-1327	1128-007-1328	1128-007-1329	1128-007-1330	1128-007-1331	1128-007-1332	1128-007-1333	1128-007-1334	1128-007-1335	1128-007-1336	1128-007-1337	1128-007-1338	1128-007-1339	1128-007-1340	1128-007-1341	1128-007-1342	1128-007-1343	1128-007-1344	1128-007-1345	1128-007-1346	1128-007-1347	1128-007-1348	1128-007-1349	1128-007-1350	1128-007-1351	1128-007-1352	1128-007-1353	1128-007-1354	1128-007-1355	1128-007-1356	1128-007-1357	1128-007-1358	1128-007-1359	1128-007-1360	1128-007-1361	1128-007-1362	1128-007-1363	1128-007-1364	1128-007-1365	1128-007-1366	1128-007-1367	1128-007-1368	1128-007-1369	1128-007-1370	1128-007-1371	1128-007-1372	1128-007-1373	1128-007-1374	1128-007-1375	1128-007-1376	1128-007-137
------	---------------	---------------	---------------	---------------	---------------	---------------	---------------	---------------	---------------	---------------	---------------	---------------	---------------	---------------	---------------	---------------	---------------	---------------	---------------	---------------	---------------	---------------	---------------	---------------	---------------	---------------	---------------	---------------	---------------	---------------	---------------	---------------	---------------	---------------	---------------	---------------	---------------	---------------	---------------	---------------	---------------	---------------	---------------	---------------	---------------	---------------	---------------	---------------	---------------	---------------	---------------	---------------	---------------	---------------	---------------	---------------	---------------	---------------	---------------	---------------	---------------	---------------	---------------	---------------	---------------	---------------	---------------	---------------	---------------	---------------	---------------	---------------	---------------	---------------	---------------	---------------	---------------	---------------	---------------	---------------	---------------	---------------	---------------	---------------	---------------	---------------	---------------	---------------	---------------	---------------	---------------	---------------	---------------	---------------	---------------	---------------	---------------	---------------	---------------	---------------	---------------	---------------	---------------	---------------	---------------	---------------	---------------	---------------	---------------	---------------	---------------	---------------	---------------	---------------	---------------	---------------	---------------	---------------	---------------	---------------	---------------	---------------	---------------	---------------	---------------	---------------	---------------	---------------	---------------	---------------	---------------	---------------	---------------	---------------	---------------	---------------	---------------	---------------	---------------	---------------	---------------	---------------	---------------	---------------	---------------	---------------	---------------	---------------	---------------	---------------	---------------	---------------	---------------	---------------	---------------	---------------	---------------	---------------	---------------	---------------	---------------	---------------	---------------	---------------	---------------	---------------	---------------	---------------	---------------	---------------	---------------	---------------	---------------	---------------	---------------	---------------	---------------	---------------	---------------	---------------	---------------	---------------	---------------	---------------	---------------	---------------	---------------	---------------	---------------	---------------	---------------	---------------	---------------	---------------	---------------	---------------	---------------	---------------	---------------	---------------	---------------	---------------	---------------	---------------	---------------	---------------	---------------	---------------	---------------	---------------	---------------	---------------	---------------	---------------	---------------	---------------	---------------	---------------	---------------	---------------	---------------	---------------	---------------	---------------	---------------	---------------	---------------	---------------	---------------	---------------	---------------	---------------	---------------	---------------	---------------	---------------	---------------	---------------	---------------	---------------	---------------	---------------	---------------	---------------	---------------	---------------	---------------	---------------	---------------	---------------	---------------	---------------	---------------	---------------	---------------	---------------	---------------	---------------	---------------	---------------	---------------	---------------	---------------	---------------	---------------	---------------	---------------	---------------	---------------	---------------	---------------	---------------	---------------	---------------	---------------	---------------	---------------	---------------	---------------	---------------	---------------	---------------	---------------	---------------	---------------	---------------	---------------	---------------	---------------	---------------	---------------	---------------	---------------	---------------	---------------	---------------	---------------	---------------	---------------	---------------	---------------	---------------	---------------	---------------	---------------	---------------	---------------	---------------	---------------	---------------	---------------	---------------	---------------	---------------	---------------	---------------	---------------	---------------	---------------	---------------	---------------	---------------	---------------	---------------	---------------	---------------	---------------	---------------	---------------	---------------	---------------	---------------	---------------	---------------	---------------	---------------	---------------	---------------	---------------	---------------	---------------	---------------	---------------	---------------	---------------	---------------	---------------	---------------	---------------	---------------	---------------	---------------	---------------	---------------	---------------	---------------	---------------	---------------	---------------	---------------	---------------	---------------	---------------	---------------	---------------	---------------	---------------	---------------	---------------	---------------	---------------	---------------	---------------	---------------	---------------	---------------	---------------	---------------	---------------	---------------	--------------

PROPERTY LOSS OR DAMAGE REPORT Fire Suppression		1. Crew Name or No. (O#, A#, E# or C#)	2. ID NO (Form OF-288) NOT APPLICABLE
		3. ISSUED TO <i>(List Individual Name, Home Unit Name, Home Unit Address, Email and Telephone Numbers – Fax, Cell, Work, etc.)</i>	
4. ISSUING OFFICE OR CAMP NAME <i>(Name of Incident Agency and the Incident Number)</i>			
5. FIRE NAME	6. FIRE NO. <i>(Fire Account Code)</i>	7. TYPE EMPLOYEE <i>(Mark one with "X")</i> <input type="checkbox"/> Regular Govt <input type="checkbox"/> Casual Firefighter/AD <input type="checkbox"/> Other _____	
8. DESCRIPTION OF PROPERTY LOST OR DAMAGED <i>(Include Property/Serial No. and year if applicable. If request is for such items as parts of an equipment or vehicle, include approximate year or of age of equipment.)</i>			QUANTITY
a.			
b.			
c.			
9. Employee report on circumstances of loss or damaged to property listed: <i>(Be specific – date, place, division on fire; be descriptive of damage, loss, HOW DID THE FIRE CAUSE THE DAMAGE, etc.)</i>			
10. SIGNATURE			11. DATE
12. Witness report: <i>(Be specific –date, place, division on fire; be descriptive of damage, loss, HOW DID THE FIRE CAUSE THE DAMAGE what did you see, etc.)</i>			
13. SIGNATURE			14. DATE
15. Fire Boss or Property Control Officer comments regarding loss or damage: <div style="text-align: center;">Please see next page. Do not complete this area.</div>			
16. SIGNATURE	17. TITLE	18. DATE	

Requestor Name: _____

Resource Order#: _____

Incident Supervisor:

Comments:

Name and Position: _____

Contact Phone and Email: _____

Do Not Recommend Recommended

Signature & Date: _____

Subject Matter Expert:

Supply Ground Support Communications Computer Specialist Other: _____

Comments:

Name and Position: _____

Contact Phone and Email: _____

Do Not Recommend Recommended

Signature & Date: _____

Incident Agency Representative:

(Agency Administrator, IBA, Finance Section Chief, Admin Representative, etc.)

Decision:

Do Not Approve Approved

Approved with the following contingencies:

Comments:

Name and Title: _____

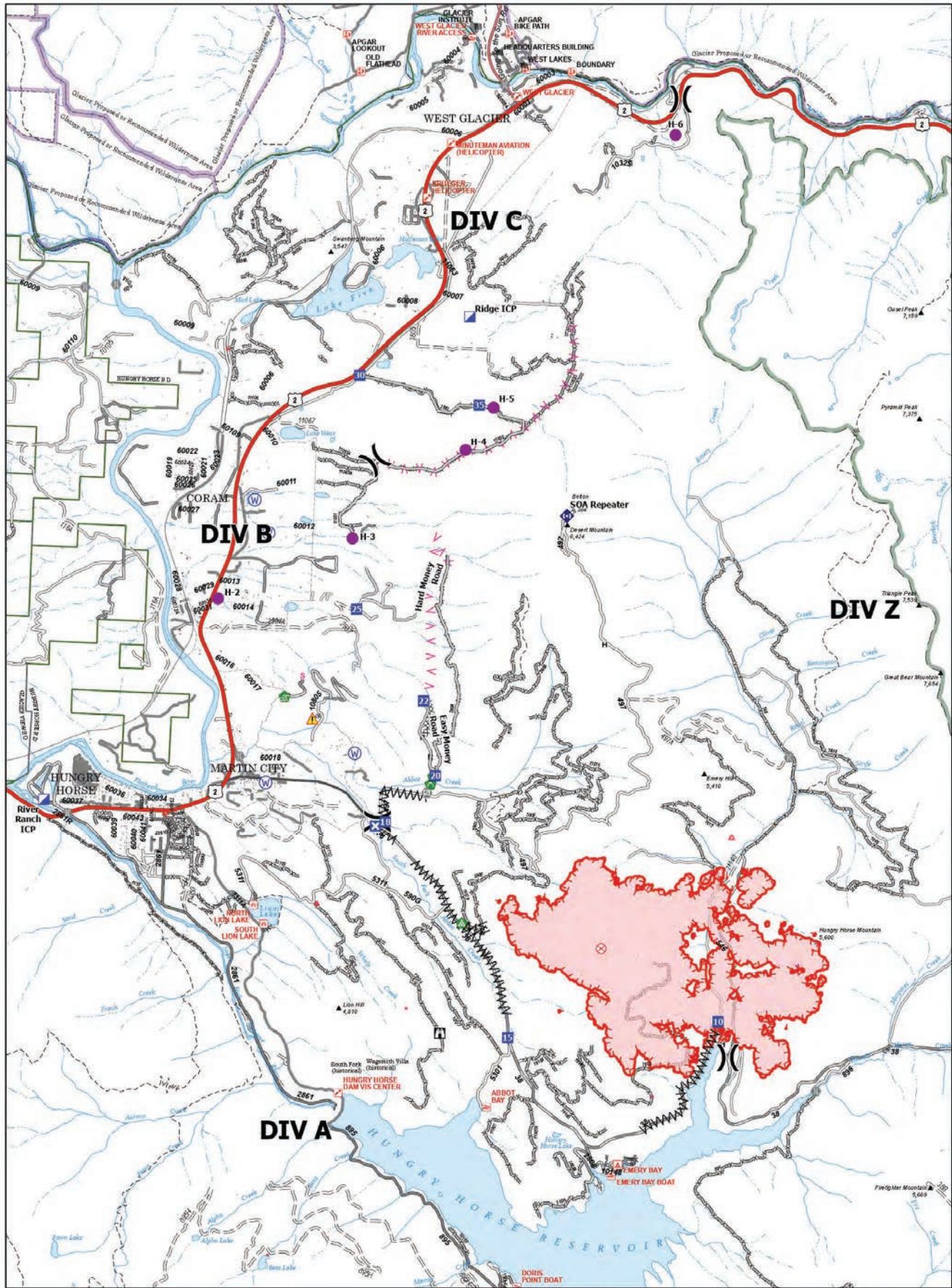
Signature & Date: _____

Contact Phone: _____

Supply Unit:

Sent to dispatch on: (date) _____

Resource Order(s) Assigned: **S**- _____



Transportation

Ridge
 MT-FNF-000518
 2,773 acres
 08/08/2023
 File perimeter updated from
 Aerials from IR and GPS on 06/2023 @2009

- Helispot
- ⊗ Division Break
- ⊠ Incident Command Post
- ⊡ Drop Point
- ⊞ Closure
- ⊟ Lookout
- ⊠ Fire Origin
- ⊡ Gate
- Water Development or Draft Site
- Landing or Log Deck
- Culvert
- Repeater
- Hazard
- Water Source
- Completed Dozer Line
- AA Completed Fuel Break
- ⊡ Completed Hand Line
- ⊡ Completed Road as Line
- ▲ Planned Fuel Break
- ▲ Planned Mixed Construction Line
- ▲ Planned Secondary Line
- ▲ Access or Improved Road
- ▲ Repair Line
- ▲ Uncontained
- ▲ Wildfire Daily Fire Panimeter
- ▲ Primary Highway
- ▲ Secondary Highway
- Primary Paved
- Secondary Paved
- Secondary Dirt
- Paved
- Gravel Road
- Dirt Road
- Unimproved Road
- Forest Service Roads Closed



Remote Incident
 Support Team
 8/7/2023 19:23
 North American 1983
 Datum: Lull Long Grid

Transportation

HEALTH AND SAFETY MESSAGE

SAFETY starts with *YOU*

We are ALL accountable for SAFE behaviors

INCIDENT: **Ridge** DATE: 08/08/2023 Oper. Period: Day & Night

Major Hazards and Risks:

Weather "Wind"

Dehydration

Unexpected Fire Behavior

Fire Order of the Day – Initiate ALL actions based on current/ forecasted weather and expected fire behavior

Weather "Wind":

Ask yourself these questions:

Do I know the wind direction(s) today? Do I understand the Incident Meteorologist forecast for this operational shift? Am I basing my actions on current and forecasted weather? Am I clear on the Fire Behavior Analysis instructions and predictions?

Dehydration:

To prevent dehydration, consider the following guidelines:

Drink 8-16 oz. of water before you start work, take frequent drinks each hour you work up to (1 Qt.), Drink as much as possible at each meal, continue replacing fluids after work is over & limit caffeine drinks (coffee and cola).

Unexpected Fire Behavior: Have you obtained a thorough briefing? What information would you want to get from resources that you are replacing? Have escape routes and safety zones been thoroughly scouted? Have potential dangers been located and can they be dealt with?

Do you have access to weather and fire behavior forecasts? What is your IMT procedure for obtaining forecasts?

To reduce risk, initiate the following:

- Post lookouts.
- Check communications.
- Retreat if you have doubts about your escape routes or safety zones or if the situation becomes too complex.

Watch Out Situation of the Day



11. UNBURNED FUEL BETWEEN YOU AND THE FIRE

Look Up, Look Down, Look Around

***Look Up:** Check the sky for any weather changes such as building or approaching thunderstorms, wind shifts or increasing in speed. Watch for air operations and water drops. Look for snags.

***Look Down:** Watch your footing. Keep an eye out for snakes, bees nests and observe fine fuels on the ground.

*** Look Around** Check fuel loading in the area, general terrain, current fire behavior and ladder fuels. Keep an eye on fellow firefighters for signs of heat stress and smoke inhalation.

Ridge Fire
Incident within an Incident Emergency Action Plan

LEADERS INTENT – To provide efficient patient care and facilitate rapid transport to definitive care.

In the case of a serious accident requiring patient transport to a medical facility:

- The IWI commander will be established at the incident scene.
- The closest ranking Operations Leader will proceed to the IWI site and assist if necessary.
- Use the 8-line protocol to assess patient; if patient evaluation is either Red or Yellow use **DESERT MTN RPT** to contact Kalispell Dispatch to initiate medical IWI. If patient assessment is Green contact Fireline supervision for incident medical personnel to respond.
- IWI Commander has authority to request from Kalispell Dispatch Life-Flight Helicopter and/or ALS Ambulance along with incident medical personnel.
- If patient assessment is Red, IWI Commander is encouraged to activate multiple transport options. IWI Commander will utilize appropriate option for patient transport to definitive care.
- For extraction forest aircraft, utilize Incident Air to Ground.
If using an air ambulance, use TAN (155.3400 RX/TX) to communicate with air ambulance.
- Patients evaluated as Green notify nearest supervisor of the location of the incident and assigned EMT to determine treatment and transport.
- Upon notification of a serious accident, the following will report to nearest radio: Incident Commander and Operations Section Chief.
- Incident radio traffic will be monitored by the Kalispell Interagency Dispatch Center 24/7.

Approved by:



Incident Commander

MEDICAL PLAN (ICS 206 WF)

Controlled Unclassified Information//Basic

Medical Incident Report

FOR A NON-EMERGENCY INCIDENT, WORK THROUGH CHAIN OF COMMAND TO REPORT AND TRANSPORT INJURED PERSONNEL AS NECESSARY.

FOR A MEDICAL EMERGENCY: IDENTIFY ON SCENE INCIDENT COMMANDER BY NAME AND POSITION AND ANNOUNCE "MEDICAL EMERGENCY" TO INITIATE RESPONSE FROM IMT COMMUNICATIONS/DISPATCH.

Use the following items to communicate situation to communications/dispatch.

1. CONTACT COMMUNICATIONS / DISPATCH (**Verify correct frequency prior to starting report**)

Ex: "Communications, Div. Alpha. Stand-by for Emergency Traffic."

2. INCIDENT STATUS: *Provide incident summary (including number of patients) and command structure.*

Ex: "Communications, I have a Red priority patient, unconscious, struck by a falling tree. Requesting air ambulance to Forest Road 1 at (Lat./Long.) This will be the Trout Meadow Medical, IC is TFLD Jones. EMT Smith is providing medical care."

Severity of Emergency / Transport Priority	<input type="checkbox"/> RED / PRIORITY 1 Life or limb threatening injury or illness. Evacuation need is IMMEDIATE <i>Ex: Unconscious, difficulty breathing, bleeding severely, 2° – 3° burns more than 4 palm sizes, heat stroke, disoriented.</i> <input type="checkbox"/> YELLOW / PRIORITY 2 Serious Injury or illness. Evacuation may be DELAYED if necessary. <i>Ex: Significant trauma, unable to walk, 2° – 3° burns not more than 1-3 palm sizes.</i> <input type="checkbox"/> GREEN / PRIORITY 3 Minor Injury or illness. Non-Emergency transport <i>Ex: Sprains, strains, minor heat-related illness.</i>	
Nature of Injury or Illness & Mechanism of Injury		<i>Brief Summary of Injury or Illness (Ex: Unconscious, Struck by Falling Tree)</i>
Transport Request		<i>Air Ambulance / Short Haul/Hoist Ground Ambulance / Other</i>
Patient Location		<i>Descriptive Location & Lat. / Long. (WGS84)</i>
Incident Name		<i>Geographic Name + "Medical" (Ex: Trout Meadow Medical)</i>
On-Scene Incident Commander		<i>Name of on-scene IC of Incident within an Incident (Ex: TFLD Jones)</i>
Patient Care		<i>Name of Care Provider (Ex: EMT Smith)</i>

3. INITIAL PATIENT ASSESSMENT: *Complete this section for each patient as applicable (start with the most severe patient)*

Patient Assessment: See IRPG page 106

Treatment:

4. TRANSPORT PLAN:

Evacuation Location (if different): *(Descriptive Location (drop point, intersection, etc.) or Lat. / Long.)* Patient's ETA to Evacuation Location:

Helispot / Extraction Site Size and Hazards:

5. ADDITIONAL RESOURCES / EQUIPMENT NEEDS:

Example: Paramedic/EMT, Crews, Immobilization Devices, AED, Oxygen, Trauma Bag, IV/Fluid(s), Splints, Rope rescue, Wheeled litter, HAZMAT, Extrication

6. COMMUNICATIONS: Identify State Air/Ground EMS Frequencies and Hospital Contacts as applicable

Function	Channel Name/Number	Receive (RX)	Tone/NAC *	Transmit (TX)	Tone/NAC *
COMMAND					
AIR-TO-GRND					
TACTICAL					

7. CONTINGENCY: **Considerations:** *If primary options fail, what actions can be implemented in conjunction with primary evacuation method? Be thinking ahead.*

8. ADDITIONAL INFORMATION: *Updates/Changes, etc.*

REMEMBER: Confirm ETA's of resources ordered. Act according to your level of training. Be Alert. Keep Calm. Think Clearly. Act Decisively.

