

CORRECTED

NOTE: Camping and dinner tonight will be at River Ranch ICP (1155 River Junction Drive) outside of Hungry Horse, MT – see map.

Incident Action Plan

Ridge Fire

MT-FNF-000518

P1QGT5 (0110)

Tuesday, August 08, 2023

Day: 0600 – 2200

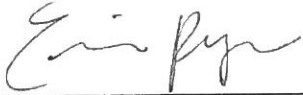

Night: 1800 – 1000



Check-In,
PDF Maps, IAP,
CTRs, Shift Tickets
Demob

<https://linktr.ee/2023.ridge>

Finance Email: 2023.ridge.finance@firenet.gov

INCIDENT OBJECTIVES ICS-202		INCIDENT NAME	DATE PREPARED	TIME PREPARED
		RIDGE FIRE	8/07/2023	2030
OPERATIONAL PERIOD (DATE/TIME)				
August 8, 2023 / Day Operational Period: 0600 – 2200				
GENERAL CONTROL OBJECTIVES				
Desired End State: All responders return home safely. Area and road closures are no longer needed to protect the public. The fire is no longer a threat to the communities of Hungry Horse, Martin City, Coram or West Glacier. The communication sites on Desert Mtn are safe from fire.				
Prioritized Values at Risk:				
<ol style="list-style-type: none"> 1. Firefighters and members of the public. 2. Private Property West of FS Rd 38 and the communities of Martin City, Hungry Horse, Coram, and West Glacier. 3. Critical communications sites on Desert Mtn. 4. Infrastructure at Hungry Horse Dam 5. Firefighter Lookout Tower 				
Incident Objectives:				
<ol style="list-style-type: none"> 1. Manage risk to responders by ensuring hazards are identified, assessed and where possible mitigated. Decide if the residual risk is acceptable given the values at risk, along with the probability of achieving the objective. 2. Provide for public safety through dissemination of fire information and timely notification of potential closures and/or evacuation information. 3. Minimize the likelihood of fire impacting private land and infrastructure in the communities of Martin City, Hungry Horse, Coram, West Glacier and other outlying private property. 4. Protect critical communications sites on Desert Mtn from the fire. 5. Minimize the likelihood of fire impacting the visitors center at hungry Horse dam. 6. Protect the Lookout tower on Firefighter Mountain from the fire. 				
Leaders Intent:				
This fire is a full suppression fire. Currently we are using indirect tactics due to the heavy amount of dead and down trees, steep slopes and limited egress options. Our current actions are to keep the fire away from Martin City, Coram and the private land in the Hwy 2 corridor. We will continue scouting for options to keep the fire from crossing on to private land and will take action to protect the communication sites on Desert Mountain. All planned actions will take into consideration the probability of success with the resources we have and are likely to get.				
<input checked="" type="checkbox"/> ORGANIZATION LIST (ICS 203)		<input checked="" type="checkbox"/> MEDICAL PLAN (ICS 206 & 206WF)		<input checked="" type="checkbox"/> SPOT WEATHER FORECAST
<input checked="" type="checkbox"/> ASSIGNMENT LIST (ICS 204)		<input checked="" type="checkbox"/> AIR OPS. SUMMARY (ICS 220)		<input type="checkbox"/> FIRE BEHAVIOR FORECAST
<input checked="" type="checkbox"/> COMMUNICATION PLAN (ICS 205)		<input checked="" type="checkbox"/> SAFETY MESSAGE		<input checked="" type="checkbox"/> UNIT LOG
PREPARED BY (PLANNING SECTION CHIEF)		APPROVED BY (INCIDENT COMMANDER)		
ICS 202 				

RIDGE Weather Forecast

Spot Forecast for Ridge Fire
National Weather Service Missoula MT
835 PM MDT Mon Aug 7 2023

Forecast is based on forecast start time of 0600 MDT on August 08.
If conditions become unrepresentative...contact the National Weather Service.

.DISCUSSION... Gradual increase in winds through Thursday. Decent RH recovery at night. High resolution models show isolated showers across northwest Montana Tuesday, but persistence and the dry airmass would say otherwise for this fire. A relatively dry front will traverse the region Wednesday. With this will come increased southwest winds. The probability for wind gusts exceeding 25 mph is 60 percent on Wednesday and 75 percent probability on Thursday (will have more of a due westerly component on Thursday).

.TUESDAY...

Sky/Weather.....Partly cloudy, a very slight chance for a shower between 4 and 6 pm MDT.

CWR (> 0.10 Inch)...10 percent.

Chance Lightning....Up to 10 percent.

LAL.....1.

Max Temperature.....76-81.

Min Humidity.....33-38 percent.

Wind (20 ft).....Downslope 2 to 5 mph becoming upslope 3 to 7 mph. Upper elevations may see more of a west-northwest 7 to 11 mph in the afternoon.

Haines Index.....2 very low.

Precip Amount.....0.00 inches.

.TUESDAY NIGHT...

Sky/Weather.....Partly cloudy.

CWR (> 0.10 Inch)...0 percent.

Chance Lightning....0 percent.

LAL.....1.

Min Temperature.....Valley: 47-50 Ridgetop: 51-54.

Max Humidity.....Ridgetop: 84-94 percent Valley: 95-100 percent.

Wind (20 ft).....Southwest 5-8 mph in the evening becoming variable 2-5 mph, except ridges may hold onto a southwest 7 to 10 mph through 10 pm. Ridgetops may experience east-northeast 5 to 8 mph after midnight.

Precip Amount.....0.00 inches.

.WEDNESDAY...

Sky/Weather.....Partly cloudy. Slight chance of rain showers in the afternoon.

CWR (> 0.10 Inch)...10 percent.

Chance Lightning....Up to 10 percent.

LAL.....1.

Max Temperature.....76-81.

Min Humidity.....28-33 percent.

Wind (20 ft).....Variable 2 to 4 mph becoming upslope 4 to 8 mph, then ridgetops and south aspects will experience southwest 8 to 15 mph with gusts to 25 mph by late afternoon.

Haines Index.....3 very low.

Precip Amount.....0.01 inches.

\$\$

Forecaster...Noble

ORGANIZATION ASSIGNMENT LIST

ICS-203

1. INCIDENT NAME

RIDGE FIRE

2. DATE PREPARED

8/07/2023

3. TIME PREPARED

1830 hrs

4. OPERATIONAL PERIOD

DATE: August 08, 2023

TIME Day 0600-2200

5. INCIDENT COMMANDER AND STAFF

INCIDENT COMMANDER	Shane Martin 406-533-9162
INCIDENT COMMANDER	
SAFETY OFFICER	Ian Quist
LINE SAFETY	
LIAISON OFFICER	
INFORMATION OFFICER	Max Rebholz
INFORMATION OFFICER	Ivan Huld
HUMAN RESOURCE SPECIALIST	

9. OPERATIONS SECTION

OPERATIONS SECTION CHIEF - LINE	Kyle Miller
OPERATIONS SECTION CHIEF - PLANS	Nick Schreiner 406-438-5923

6. AGENCY REPRESENTATIVES

a. BRANCH 1 DIVISIONS/GROUPS

AGENCY	NAME	BRANCH DIRECTOR		
US Forest Service	Bill Mulholland MJ Crandall (t)	DIVISION	ALPHA	Todd Ruzicka Wayne Bale-Rudnitski (t)
Resource Advisor	Nate Dieterich Chris Hoge	DIVISION/GROUP	BRAVO	Steve Houser
	David Wright	DIVISION/GROUP	CHARLIE	Adam Booth
	Justin Crotteau	DIVISION/GROUP	STRUCTURE	Carrie Thaler
		DIVISION/GROUP	NIGHT	Cliff Reynolds
		DIVISION/GROUP		

7. PLANNING SECTION

PLANNING SECTION CHIEF	Erin Ryan 406-560-3913
RESOURCE UNIT LEADER	
STATUS CHECK IN	Bob Bundy (t) 406-565-9247
SITUATION UNIT LEADER	
METEOROLOGIST	
GISS	RIST
GISS	

DIVISION/GROUP	
DIVISION/GROUP	
DIVISION/GROUP	
DIVISION/GROUP	
DIVISION/GROUP	
DIVISION/GROUP	

10. AIR BRANCH

TRAINING SPECIALIST		AIR OPERATIONS BRANCH DIRECTOR	
AIR RESOURCE ADVISOR		AIR SUPPORT GROUP SUPERVISOR	
ITSS		AIR SUPPORT GROUP SUPERVISOR	
		AIR TACTICAL GROUP SUPERVISOR	

8. LOGISTICS SECTION

LOGISTICS SECTION CHIEF	Dave Scherbel (t)
LOGISTICS SECTION CHIEF	Nancy Heggen (t) 406-217-7880
DEPUTY LOGISTICS SECTION CHIEF	
DEPUTY LOGISTICS SECTION CHIEF	
DEPUTY LOGISTICS SECTION CHIEF	
GROUND SUPPORT	Terry Thorpe, Jeff Jetter
BASE CAMP MANAGER	Lawrence Crofutt (t)

HELIBASE MANAGER

11. MEDICAL SECTION

RECEIVING/DISTRIBUTION MANAGER	Gloria Bear	MEDICAL OFFICER	
ORDERING MANAGER		MEDICAL UNIT LEADER	Nicholas Arnett
COMMUNICATION UNIT		AMBULANCE	Wilderness Ambulance
SECURITY MANAGER	Kevin Arnold	PARAMEDIC	UTV Medics Gregor

12. FINANCE SECTION

FINANCE SECTION CHIEF	Kimie Denney 406-468-4545
FINANCE SECTION CHIEF	Deb Gross (t)
COST UNIT LEADER	
COMP/CLAIMS UNIT LEADER	
PROCUREMENT UNIT LEADER	
EQUIPMENT TIME RECORDER	
PERSONNEL TIME RECORDER	

PREPARED BY (PSC): Erin Ryan

ASSIGNMENT LIST				1.Branch	2. Division/Group			
				ALPHA				
3. Incident Name		Ridge		4. Operational Period				
				Date: 8/8/2023		Time: 0600-2200		
5. Operations Personnel								
Planning Operations		Nick Schreiner		Division/Group Supervisor		Todd Ruzicka / Wayne Bales-Rudnitski(T)		
Line Operations		Kyle Miller						
Safety Officer		Ian Quist		Air Operations				
6. Resources Assigned This Period								
Request #	Position / Resource	Last Shift	Leader	No. EMT	No. Pers	Drop Off PT./Time	Pick Up PT./Time	
C-10	CRW1 Plumas IHC	8/20	Mike Sherman	0	19	ICP/0600	River Ranch ICP/2200	
C-11	CRW1 Alta IHC	8/21	Tyler Carruth	0	22	ICP/0600	River Ranch ICP/2200	
C-2	CRW2 R&R	8/16	Bernabe Cisneros	0	20	ICP/0600	River Ranch ICP/2200	
C-3	CRW2 R&R	8/16	Marco Rocha	0	20	ICP/0600	River Ranch ICP/2200	
E-27	WTS2 Walking Y4 LLC.	8/16	Al Helsley	0	1	ICP/0600	River Ranch ICP/2200	
E-30	MBM2	8/13	Anthony Hulett	0	1	ICP/0600	River Ranch ICP/2200	
E-56	WTT1 Weber Fire	8/20	Tom Sexton	2	2	ICP/0600	River Ranch ICP/2200	
	ENG6 Whitefish VFD	8/20	Glen Hartman	2	2	ICP/0600	River Ranch ICP/2200	
	*E462		Thompson	0	3	ICP/0600	River Ranch ICP/2200	
O-13	FMOD	8/18	Wade Long/Steve Flores	0	2	ICP/0600	River Ranch ICP/2200	
O-14	FMOD	8/18	Cody Stinger/Bill Stinger	0	2	ICP/0600	River Ranch ICP/2200	
O-6	REAF	8/17	Chris Hoge	0	1	ICP/0600	HHRD/2200	
	*READ		Nate Dieterich	0	1	ICP/0600	HHRD/2200	
	*READ		Adam Kane	0	1	ICP/0600	HHRD/2200	
E-58	AMB2 Wilderness Ambulance	8/21	Amanda MacArthur	2	2	ICP/0600	River Ranch ICP/2200	
7. Control Operations								
<p>Task: Construct indirect fuel break along the 38 Road (East Side Road). Patrol and monitor for fire impacting 38 Road. Utilize aerial resources as needed to prevent fire from negatively impacting firelines and values at risk. Develop medical extraction plans and establish medivac sites where needed.</p> <p>Purpose: Safely implement indirect attack options to contain the fire minimizing damages to values at risk.</p> <p>End State: Fire is safely extinguished and negative impacts to private land and infrastructure are minimized. Impacts to infrastructure along the 38 Road (East Side Road) corridor is limited.</p>								
8. Special Instructions:								
Maintain the appropriate operational pace given the current and expected fire behavior. Coordinate with the READ concerning bull trout and cutthroat trout habitat. Be bear aware.								
*denotes local lent resource								
9. Division/Group Communication Summary								
Function	Frequency - RX	Frequency - TX	Tone	Channel	Comments			
Command	167.2500	162.2625	107.2	6				
Forest Repeater	173.1125	164.3750	107.2	8				
Tac 1	172.2250	172.2250	107.2	1				
A/G Primary	173.8375	173.8375	0.0	10				
Prepared by (RESL)		Approved by (PSC)		Date		Time		
		E Ryan						

ASSIGNMENT LIST				1.Branch	2. Division/Group				
				BRAVO					
3. Incident Name		Ridge		4. Operational Period		Date: 8/8/2023		Time: 0600-2200	
5. Operations Personnel									
Planning Operations		Nick Schreiner			Division/Group Supervisor		Steve Houser		
Line Operations		Kyle Miller							
Safety Officer		Ian Quist			Air Operations				
6. Resources Assigned This Period									
Request #	Position / Resource	Last Shift	Leader	No. EMT	No. Pers	Drop Off PT./Time	Pick Up PT./Time		
O-11	TFLD	8/19	Mike Greer	0	1	ICP/0600	River Ranch ICP/2200		
O-3	TFLD (T)	8/15	Casey Hamilton	0	1	ICP/0600	River Ranch ICP/2200		
C-8	T2IA Teton Interagency	8/21	Tyler Kulla/Titus Perkins (t)	1	22	ICP/0600	River Ranch ICP/2200		
O-2	HEQB	8/16	Isaac Gansberg	0	1	ICP/0600	River Ranch ICP/2200		
E-2	HETF	8/15	Siderius	0	7	ICP/0600	River Ranch ICP/2200		
E-34	LOGL	8/18	James Slack	0	1	ICP/0600	River Ranch ICP/2200		
E-35	LOGL	8/18	Brandon Clouse	0	1	ICP/0600	River Ranch ICP/2200		
E-84	MBM2 J3 Contracting	8/21	William Grant	0	2	ICP/0600	River Ranch ICP/2200		
O-16	TFLD	8/17	Yuri Kozicky	0	1	ICP/0600	River Ranch ICP/2200		
O-21	TFLD(T)	8/17	Karl Cook	0	1	ICP/0600	River Ranch ICP/2200		
E-21	FELB	8/19	Shelby George	0	1	ICP/0600	River Ranch ICP/2200		
E-63	WTS2 Rocky Mtn Wildland	8/19	Craig Lodge	0	1	ICP/0600	River Ranch ICP/2200		
E-50	HETF	8/19	Russ Miller	0	5	ICP/0600	River Ranch ICP/2200		
E-67	SKG3 Rocky Mtn Fire	8/21	Fred Garnard	0	1	ICP/0600	River Ranch ICP/2200		
C-1	T2IA Great Northern	8/14	Brian Buckley	5	19	ICP/0600	River Ranch ICP/2200		
C-7	T2IA Keystone	8/20	Jake Novitsky	0	21	ICP/0600	River Ranch ICP/2200		
E-26	WTS2 R2K Ent.	8/16	Hiram Bird	0	1	ICP/0600	River Ranch ICP/2200		
E-38	CHP2 Brothers Chipping #2	8/19	Anlyn Flake	0	2	ICP/0600	River Ranch ICP/2200		
E-39	CHP2 Brothers Chipping #1	8/19	Adam McKenny	0	2	ICP/0600	River Ranch ICP/2200		
E-41	ENG6 Ashley 611	8/19	Noah Shepperson	0	3	ICP/0600	River Ranch ICP/2200		
E-49	PUP1 Ashley Chase	8/19	Zachery Belge	0	2	ICP/0600	River Ranch ICP/2200		
E-61	*WTS2 Martin City FD	8/13	Don Mills	0	1	ICP/0600	River Ranch ICP/2200		
E-60	*E382 Bigfork FD		Sean Reffner	2	3	ICP/0600	River Ranch ICP/2200		
E-62	E582 Somers FD		Tom Havens	1	3	ICP/0600	River Ranch ICP/2200		
O-6	REAF	8/17	Chris Hoge	0	1	ICP/0600	HHRD/2200		
	*READ		Nate Dieterich	0	1	ICP/0600	HHRD/2200		
	*READ		Adam Kane	0	1	ICP0600	HHRD/2200		
O-63	MESU UTV Medics	8/21	Ryan Gregor	0	1	ICP/0600	River Ranch ICP/2200		
7. Control Operations									
Task: Continue to construct indirect fuelbreak/fireline from DIV A/B break to the north to minimize impacts to private property and infrastructure. Utilize aerial resources as needed. Develop medical extraction plans and establish medivac sites where needed.									
Purpose: Safely implement indirect attack options to contain the fire while minimizing damages to values at risk.									
End State: Fire is safely extinguished and negative impacts to private land and infrastructure are minimized.									
8. Special Instructions:									
Maintain the appropriate operational pace given the current and expected fire behavior. Coordinate with the READ concerning bull trout and cutthroat trout habitat. Be bear aware.									
<i>*denotes local lent resource.</i>									
9. Division/Group Communication Summary									
Function	Frequency - RX	Frequency - TX	Tone	Channel	Comments				
Command	167.2500	162.2625	107.23	6					
Forest Repeater	173.1125	164.3750	107.2	8					
Tac 2	172.3750	172.3750	107.2	2					
Primary A/G	173.8375	173.8375	0.0	10					
Prepared by (RESL)		Approved by (PSC)			Date		Time		
		E Ryan							

INCIDENT RADIO COMMUNICATIONS PLAN		1. Incident Name RIDGE FIRE - FNF TYPE III			2. Date Time Prepared 05 AUG 23/2000		3. Operational Period Date/Time 06 AUG 23 0600 to 2200	
4. Basic Radio Channel Utilization Mode: W= Wideband, N= Narrowband, D= Digital, M= Mixed								
Radio Type	CH #	Function	Frequency	Tone/MAC	Mode	TGID	Assignment	Remarks
	1	Tactical 1	RX: 172.2250 TX: 172.2250	107.2	M	1	TAC1	DIV A
	2	Tactical 2	RX: 172.3750 TX: 172.3750	107.2	M	1	TAC2	DIV B
	3	Tactical 3	RX: 154.3025 TX: 154.3025	107.2	M	1	TAC3	DIV C
	4	Work/Tactical/Comm Use	RX: 168.1625 TX: 168.1625	ø	M	1	FNF WRK1	Structure Group / DIV Night
	5	Command Direct	RX: 167.2500 TX: 167.2500	107.2	M	1	CMD DIR	Ridge Command Direct
	6	Command Repeater	RX: 167.2500 TX: 162.2625	107.2	M	1	CMD RPTR	Ridge Command Repeat
	7	Forest Direct	RX: 173.1125 TX: 173.1125	ø	M	1	FNF DIR	
	8	Forest Repeater	RX: 173.1125 TX: 164.3750	123.0	M	1	DESERT	Kalispell Dispatch Repeater
	9	Forest Air-to-Ground Pri	RX: 169.1250 TX: 169.1250	ø	M	1	FNF A/G	
	10	Area Air-to-Ground 2nd	RX: 173.8375 TX: 173.8375	ø	M	1	RIDGE A/G	A/G Primary
	11	Area Air-to-Ground 3rd	RX: 168.3875 TX: 168.3875	ø	M	1	3A/G 52	
	12	MT Mutual Air-to-Ground Pri	RX: 151.2200 TX: 151.2200	ø	M	1	YELLOW	
	13	MT Mutual Air-to-Ground 2nd	RX: 151.4000 TX: 151.4000	ø	M	1	ORANGE	
	14	MT Mutual Fire Tac	RX: 154.0700 TX: 154.0700	ø	M	1	RED	
	15	MT Mutual Med A/G	RX: 155.3400 TX: 155.3400	ø	M	1	TAN	
	16	Nat'l Air Guard A/G	RX: 168.6250 TX: 168.6250	ø	M	1	AIRGUARD	
5. Prepared by (Communications Unit) ICP ► WEST GLACIER KOA								

Neal Maben - FNF Radio/Communications
Note: This is not a standard NWCG ICS205 Form

AIR OPERATIONS SUMMARY ICS-220

Incident Name / Number NW Montana KNF/FNF	Sunrise	Sunset	Pumpkin	KNF/FNF	Time Prepared 8:00	Date Prepared 8/6/2023	Prepared By Mike Bentley
	21:41	21:36			Shutdown	Operational Period - Date 8/6/2023	Operational Period - Time DAY
General Remarks, Safety Notes, Hazards, Air Operations Special Equipment, etc.							
When working fires near the Canadian border, use AirNav Canada 126.700 to call in the blind, and BC Silver AG 163.890							
Backcountry Air Traffic Freq: 122.9							
After August 15, all federal aircraft will cease tactical operations by sunset. Ferry flights allowed for 30 minutes after sunset. This is due to reduced visibility caused by topography.							

Frequencies	RX	Tone	TX	Tone	AM/FM	Name		Phone		EQUIPMENT/SUPPLIES
						Position	Name	Position	Name	
KNF	A/G 52 (East)	NA	168.3875	NA	FM	Dispatch	MT-KIC (Kalispell)	406-758-5306		
	A/G 29 (West)	NA	166.9000	NA	FM	Dispatch	MT-KDC (Kootenai)	406-283-7740		
	A/A - IA	NA	128.1000	NA	AM	Aviation Officer	Mike Bentley	307-760-5428		
FNF	FNF A/G	NA	169.1250	123.0	FM	Rappel Base	Aaron Karuzas	406-283-1245		
	A/A - IA	NA	128.1000	NA	AM	ATGS	Kevin King	303-905-5133		
DNRC	Yellow (A/G Pri)	NA	169.1250	NA	FM	HEMB HHH	Jack Townsend	406-387-3864 Base		
	Orange (A/G Sec)	NA	151.4000	NA	FM	HEBM Libby	Cory Waters	252-489-9270		
	VMED 28 (TAN" - EMS A/G)	NA	155.3400	156.7	FM	HEBM (t) Libby	Bryant Coleman	208-747-7372		
Incidents										
Tin Soldier	A/A	NA	127.2500	NA	FM	HMGB 210MA	Aaron Karuzas	406-283-1245		
	A/G	NA	169.2625	NA	AM	HMGB 45MA	Cody Henry	406-431-8495		
East Fork	A/A TFR Pri	NA	118.2750	NA	FM	HMGB 603CK	David Whitener	352-973-2967		
	A/A Sec	NA	125.2750	NA	AM	HMGB 0CH	Seth Schaub	970-420-0793		
	A/G	NA	170.5750	NA	AM	HMGB 4NS	Tom Rawlings	406-261-1673		
Gravel Pit	A/A	NA	126.6250	NA	AM	HMGB 1GH	Thomas Clay	208-630-4475		
	A/G CMD	NA	170.5625	NA	AM	HMGB 17FH	Jack Townsend	208-789-1011		
	A/G Tac	NA	171.7750	NA	FM	HMGB 350HQ	Brent Flemming	307-250-5834		
Ridge	A/A	NA	126.8250	NA	AM	HMGB 301HP	Billy Groves	406-599-7161		
	A/G	NA	173.8375	NA	FM					

HELICOPTERS (Kootenai)													
FAA #	TYPE	Make/Model	Helibase	Avail	Start	Remarks	FAA #	TYPE	Make/Model	Helibase	Avail	Start	Remarks
N603CK	1	UH-60A	S59	Yes	8:00	NRGA Prepo - Bucket	950CH	1	CH47D	GPI	Yes	8:00	NRGA Prepo - Tanked
N210MA	2	Bell 210	S59	Yes	8:00	rappel	17FH	1	UH60A	HHH	Yes	8:00	NRGA Prepo-Standard
N145MA	2	Bell UH-1H	S59	Yes	8:00	OU3 restricted / tank	211GH	2	Bell 205	2MT4	Yes	8:00	NRGA Prepo - Standard
							394M	2	UH1H	SZ7	Yes	8:00	Fed Restricted - DNRC
							301HP	2	UH1H	HHH	Yes	8:00	FNF Support - Tanked
							114NS	3	AS 350 B3	HHH	Yes	8:00	FNF - Standard
							350HQ	3	H-125	SZ7	Yes	8:00	Standard - SHORT-HAUL

UNMANNED AIRCRAFT SYSTEMS													
FAA #	Type	Model	Call Sign	Avail	Start	Remarks	FAA #	Type	Make/Model	Base	Avail	Start	Remarks
FASLWKR939	T-3	Alta X	UR 31		08:00	Tin Soldier	N690JK	AA-202	Aero Cmrdr 690B	GPI	Yes	8:00	NRGA Pre-po
FASLWKRMP3	T-3	Alta X	UR 31		08:00	Nate Harrison 406-897-3037	N58441	LFW	Cessna CE-206-F	MT95	Yes	10:00	Detection

HELICOPTERS (Flathead)					
Name	Latitude	Longitude	Name	Latitude	Longitude

Public Information

FIRE INFORMATION CONTACT -

Please direct any public or media inquiries to the Information Center at:

406-998-6074

(staffed from 0800 – 2000)

or **2023.ridge@firenet.gov**

PICTURES, NEEDED!! Your photos help tell this fire's story and justify our hard work! Take photos of the fire and firefighters working and Airdrop to a PIO's phone. Be sure to provide information, and your contact information. Looking for landscape photos of steep rocky terrain, active fire behavior, as well as crews working. And as always please make sure to have all PPE on if sending photos of firefighters. Thanks!

Please email/text/airdrop your photos to:

406-880-8090;

2023.ridge@firenet.gov

Shower Hours @ Ridge ICP

0630 – 1330

1630 – 2300

Finance Message

Please Submit Time to
2023.ridge.finance@firenet.gov

Personnel – In subject line put CTR
and your resource order #

Equipment – In subject line put ST
and your resource order #

Breakfast @ Ridge ICP

Breakfast 0530 – 0900

Dinner @ River Ranch ICP

Dinner 1800 – 2200

Weed Wash @ Hungry Horse Ranger District

0700 – 1900

First source of supply is Cache, shaded blocks indicate items available thru Northern Rockies Cache. Items requiring an approved Property Loss and Damage form are in a separate list at the bottom.												
PART	034/341	360/MS360	MS361	MS362	038/381	044/MS440	MS441	460/MS461	MS462	0640/650	MS660	MS880
Spark Plug (NFE# 000344)	Bosch WSR6F NGK BPMR7A Champion RC16Y	Bosch WSR6F NGK BPMR7A Champion RC16Y	Bosch WSR6F NGK BPMR7A Champion RC16Y	Bosch WSR6F NGK BPMR7A Champion RC16Y	Bosch WSR6F NGK BPMR7A Champion RC16Y	Bosch WSR6F NGK BPMR7A Champion RC16Y	Bosch WSR6F NGK BPMR7A Champion RC16Y	Bosch WSR6F NGK BPMR7A Champion RC16Y	Bosch USR7AC NGK CMR6H	Bosch WSR6F NGK BPMR7A Champion RC16Y	Bosch WSR6F NGK BPMR7A Champion RC16Y	Bosch WSR6F NGK BPMR7A Champion RC16Y
Needle Cage Bearing (NFE# 066565)	9512-933-2380	9512-933-2380	9512-933-2380	9512-933-2380	9512-933-3150	9512-933-2380	9512-933-2380	9512-933-2380	9512-933-2380	9512-933-2382	9512-933-2382	9512-933-3170
Retaining Washer for Rim Sprocket	0000-958-1022	0000-958-1022	0000-958-1032	0000-958-1032	0000-958-1231	0000-958-1032	0000-958-1032	0000-958-1032	0000-958-1032	0000-958-1032	0000-958-1032	0000-958-1236
E Clip (NFE# 066517)	9460-624-0801	9460-624-0801	9460-624-0801	9460-624-0801	9460-624-1001	9460-624-0801	9460-624-0801	9460-624-0801	9460-624-0801	9460-624-0801	9460-624-0801	9460-624-1001
Fuel Filter	0000-350-3504	0000-350-3504	0000-350-3504	0000-350-3504	0000-350-3504	0000-350-3504	0000-350-3504	0000-350-3504	0000-350-3518	0000-350-3504	0000-350-3500	0000-350-3504
Air Filter - HD (NFE# 066756)	1125-120-1626	1125-120-1612	1135-120-1600	1140-140-4401	1119-120-1611	0000-140-4402	0000-120-1654	0000-120-1654	1142-140-4402	0000-140-4402	0000-140-4402	0000-140-4402
Pre Filter - OEM	N/A	N/A	N/A	N/A	1119-120-1500	0000-141-0300	0000-141-0300	0000-141-0300	N/A	0000-141-0300	0000-141-0300	0000-141-0300
Bar Nut (NFE# 066661)	0000-955-0801	0000-955-0801	0000-955-0801	0000-955-0801	0000-955-0801	0000-955-0801	0000-955-0801	0000-955-0801	0000-955-0803	0000-955-0801	0000-955-0801	0000-955-0903
Inner Slide Plate	1122-664-1000	1122-664-1000	1122-664-1000	1122-664-1000	1119-664-1000	1128-664-1001	1138-664-1000	1128-664-1001	1128-664-1001	1128-664-1001	1128-664-1001	1124-664-1001
STIHL RAPID - Super (RS)												
Chain 3/8" PITCH - .050" GA - DR												
20" - 72 DR	3623-005-0072	3623-005-0072	3623-005-0072	3623-005-0072	3623-005-0072	3623-005-0072	3623-005-0072	3623-005-0072	3623-005-0072	3623-005-0072	3623-005-0072	3623-005-0072
25" - 84 DR (NFE# 006500)	3623-005-0084	3623-005-0084	3623-005-0084	3623-005-0084	3623-005-0084	3623-005-0084	3623-005-0084	3623-005-0084	3623-005-0084	3623-005-0084	3623-005-0084	3623-005-0084
28" - 91 DR	3623-005-0091	3623-005-0091	3623-005-0091	3623-005-0091	3623-005-0091	3623-005-0091	3623-005-0091	3623-005-0091	3623-005-0091	3623-005-0091	3623-005-0091	3623-005-0091
32" - 105 DR	N/A	N/A	N/A	N/A	N/A	N/A	3623-005-0105	3623-005-0105	3623-005-0105	3623-005-0105	3623-005-0105	3623-005-0105
STIHL RAPID - Super - Full Skip (RSF)												
Chain 3/8" PITCH - .050" GA - DR												
20" - 72 DR	N/A	3676-005-0072	3676-005-0072	3676-005-0072	3676-005-0072	3676-005-0072	3676-005-0072	3676-005-0072	3676-005-0072	3676-005-0072	3676-005-0072	3676-005-0072
25" - 84 DR	3676-005-0084	3676-005-0084	3676-005-0084	3676-005-0084	3676-005-0084	3676-005-0084	3676-005-0084	3676-005-0084	3676-005-0084	3676-005-0084	3676-005-0084	3676-005-0084
28" - 91 DR	3676-005-0091	3676-005-0091	3676-005-0091	3676-005-0091	3676-005-0091	3676-005-0091	3676-005-0091	3676-005-0091	3676-005-0091	3676-005-0091	3676-005-0091	3676-005-0091
32" - 105 DR	N/A	N/A	N/A	N/A	N/A	N/A	3676-005-0105	3676-005-0105	3676-005-0105	3676-005-0105	3676-005-0105	3676-005-0105
Bar oil: Quantity - Gallon	NFE# 1880											
Bar oil: Quantity - Quart	NFE# 1869											
2 Cycle Oil: Quantity - Quart	NFE# 0341											

The following parts require an approved Property Loss & Damage form prior to ordering:

Guide Bars - 3/8" - .050" GA (STIHL ROLLOMATIC - ES)	3003-000-8822	3003-000-8822	3003-000-8822	3003-000-8822	3003-000-8822	3003-000-8822	3003-000-8822	3003-000-8822	3003-000-8822	3003-000-8822	3003-000-8822	3003-000-8822
25" (NFE# 066584)	N/A	3003-000-8830	3003-000-8830	3003-000-8830	3003-000-8830	3003-000-8830	3003-000-8830	3003-000-8830	3003-000-8830	3003-000-8830	3003-000-8830	3003-000-8830
28"	N/A	N/A	N/A	N/A	N/A	N/A	N/A	N/A	N/A	N/A	N/A	N/A
32"	N/A	N/A	N/A	N/A	N/A	N/A	N/A	N/A	N/A	N/A	N/A	N/A
Rim Sprocket Kit 3/8 - 7T	1125-007-1040	1125-007-1223	1128-007-1000	1135-007-1002	1119-007-1003	1128-007-1000	1128-007-1017	1128-007-1017	1128-007-1000	1122-007-1000	1122-007-1000	N/A
Clutch Drum	Order Sprocket Kit	Order Sprocket Kit	Order Sprocket Kit	Order Sprocket Kit	Order Sprocket Kit	Order Sprocket Kit	Order Sprocket Kit	Order Sprocket Kit	Order Sprocket Kit	Order Sprocket Kit	Order Sprocket Kit	Order Sprocket Kit
Rim Sprocket 3/8 7T (NFE# 066652)	0000-642-1231	0000-642-1023	0000-642-1223	0000-642-1223	0000-642-1223	0000-642-1223	0000-642-1223	0000-642-1223	0000-642-1223	0000-642-1223	0000-642-1223	N/A
Rim sprocket kit 3/8 - 8T	N/A	N/A	N/A	N/A	N/A	1128-007-1001	1128-007-1001	1128-007-1001	1128-007-1001	1122-007-1001	1122-007-1001	1124-007-1025
Clutch Drum	Order Sprocket Kit	Order Sprocket Kit	Order Sprocket Kit	Order Sprocket Kit	Order Sprocket Kit	Order Sprocket Kit	Order Sprocket Kit	Order Sprocket Kit	Order Sprocket Kit	Order Sprocket Kit	Order Sprocket Kit	Order Sprocket Kit
Rim Sprocket 3/8 - 8T	N/A	0000-642-1216	0000-642-1216	0000-642-1216	0000-642-1216	0000-642-1216	0000-642-1216	0000-642-1216	0000-642-1216	0000-642-1216	0000-642-1216	0000-642-1216
Clutch	1127-160-2050	1125-007-1021	1128-160-2004	1138-160-2010	1119-160-2000	1128-160-2000	1138-160-2000	1128-160-2000	1142-160-2000	1122-160-2000	1122-160-2000	1124-160-2005
Chain Adjuster Kit	1125-007-1036	1125-007-1021	1125-007-1021	1125-007-1021	1118-664-1600	1125-007-1021	1125-007-1021	1125-007-1021	1125-007-1021	1125-007-1021	1125-007-1021	1124-007-1008
Bump Strip	1121-648-6610	1121-648-6610	1121-648-6610	1121-648-6610	1120-664-1500	1121-648-6610	1121-648-6610	1121-648-6610	1121-648-6610	1121-648-6610	1121-648-6610	1121-648-6610
Starter Rope W/handle	1128-190-3400	1128-190-3400	1128-190-3400	1128-190-3400	1128-190-3400	1128-190-3400	1128-190-3400	1128-190-3400	1128-190-3400	1128-190-3400	1128-190-3400	1128-190-3400
Worm Gear (Oiler)	1125-640-7110	1125-640-7110	1128-640-7112	1128-640-7112	1119-642-1501	1128-640-7112	1128-640-7112	1128-640-7112	1128-640-7112	1122-640-7105	1122-640-7105	1124-640-7512
Manifold Boot	1125-141-2200	1125-141-2200	1135-141-2200	1140-140-2503	1119-140-2500	1128-141-2204	1138-140-2508	1128-141-2204	1142-141-2200	1122-141-2200	1122-141-2201	1124-141-2202

PROPERTY LOSS OR DAMAGE REPORT Fire Suppression		1. Crew Name or No. (O#, A#, E# or C#)	2. ID NO (Form OF-288) NOT APPLICABLE
		3. ISSUED TO <i>(List Individual Name, Home Unit Name, Home Unit Address, Email and Telephone Numbers – Fax, Cell, Work, etc.)</i>	
4. ISSUING OFFICE OR CAMP NAME <i>(Name of Incident Agency and the Incident Number)</i>			
5. FIRE NAME	6. FIRE NO. <i>(Fire Account Code)</i>	7. TYPE EMPLOYEE <i>(Mark one with "X")</i> <input type="checkbox"/> Regular Govt <input type="checkbox"/> Casual Firefighter/AD <input type="checkbox"/> Other _____	
8. DESCRIPTION OF PROPERTY LOST OR DAMAGED <i>(Include Property/Serial No. and year if applicable. If request is for such items as parts of an equipment or vehicle, include approximate year or of age of equipment.)</i>			QUANTITY
a.			
b.			
c.			
9. Employee report on circumstances of loss or damaged to property listed: <i>(Be specific – date, place, division on fire; be descriptive of damage, loss, HOW DID THE FIRE CAUSE THE DAMAGE, etc.)</i>			
10. SIGNATURE			11. DATE
12. Witness report: <i>(Be specific – date, place, division on fire; be descriptive of damage, loss, HOW DID THE FIRE CAUSE THE DAMAGE what did you see, etc.)</i>			
13. SIGNATURE			14. DATE
15. Fire Boss or Property Control Officer comments regarding loss or damage: <p style="text-align: center;">Please see next page. Do not complete this area.</p>			
16. SIGNATURE	17. TITLE	18. DATE	

Requestor Name: _____

Resource Order#: _____

Incident Supervisor:

Comments:

Name and Position: _____

Contact Phone and Email: _____

Do Not Recommend Recommended

Signature & Date: _____

Subject Matter Expert:

Supply Ground Support Communications Computer Specialist Other: _____

Comments:

Name and Position: _____

Contact Phone and Email: _____

Do Not Recommend Recommended

Signature & Date: _____

Incident Agency Representative:

(Agency Administrator, IBA, Finance Section Chief, Admin Representative, etc.)

Decision:

Do Not Approve Approved

Approved with the following contingencies:

Comments:

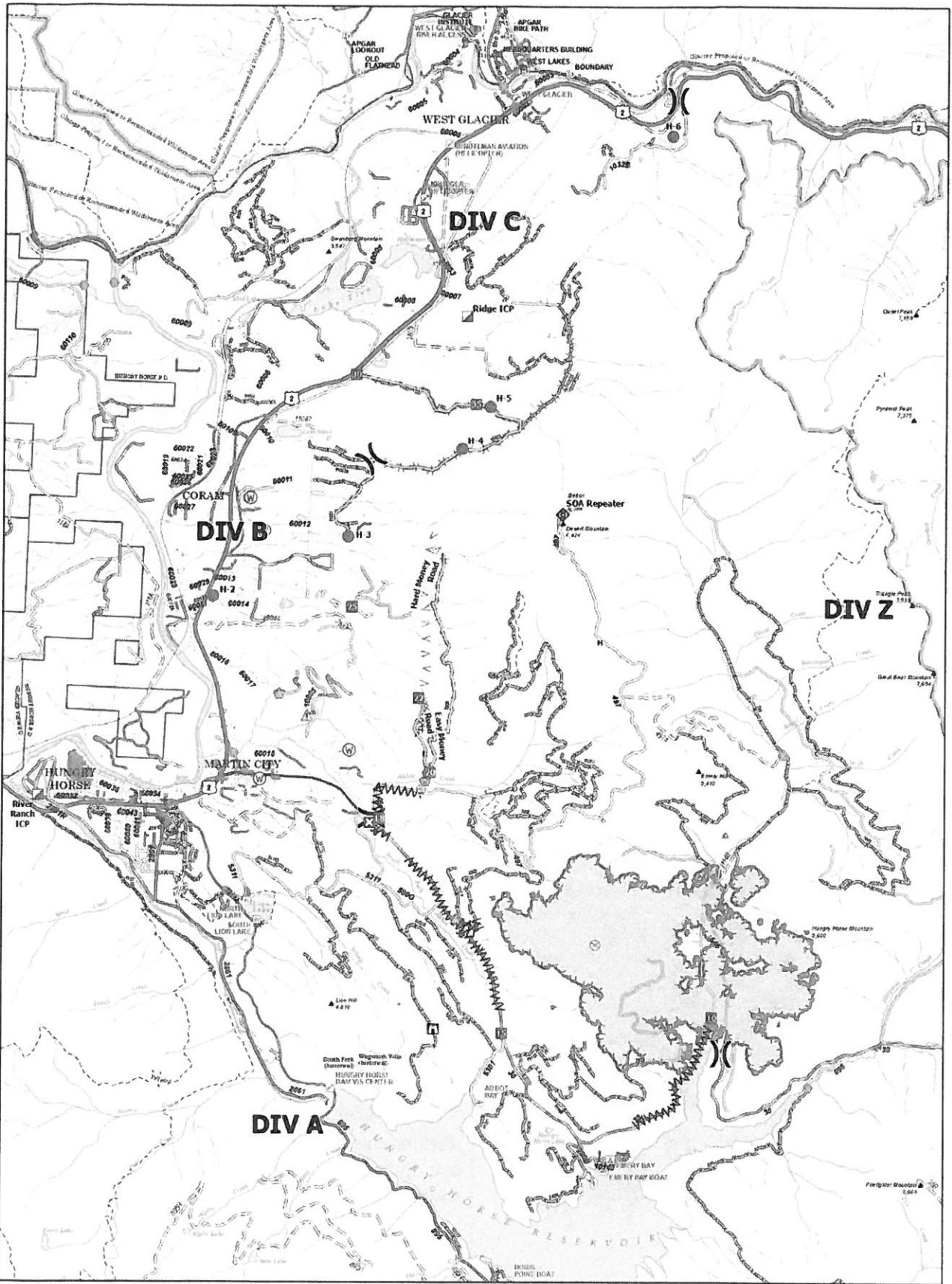
Name and Title: _____ Signature & Date: _____

Contact Phone: _____

Supply Unit:

Sent to dispatch on: (date) _____

Resource Order(s) Assigned: **S**- _____



Transportation

Ridge
 MT-FNF-000518
 2,773 acres
 08/08/2023
 File generated updated from
 Ares from R and O-PD on 06/2023 @ 2030



- Helipol
- ⌘ Division Break
- ⌘ Incident Command Post
- ⌘ Drop Point
- ⌘ Closure
- ⌘ Lookout
- ⌘ Fire Origin
- ⌘ Gate
- ⌘ Water Development or Draft Site
- ⌘ Landing or Log Deck
- ⌘ Culvert
- ⌘ Repeater
- ⌘ Hazard
- ⌘ Water Source
- ⌘ Completed Dozer Line
- ⌘ Completed Fuel Break
- ⌘ Completed Hand Line
- ⌘ Completed Road as Line
- ⌘ Planned Fuel Break
- ⌘ Planned Mixed Construction Line
- ⌘ Planned Secondary Line
- ⌘ Access or Improved Road
- ⌘ Reper Line
- ⌘ Uncontained
- ⌘ Wildlife Daisy Fire Penmeter
- ⌘ Primary Highway
- ⌘ Secondary Highway
- Primary Paved
- Secondary Paved
- Secondary Dirt
- Paved
- Gravel Road
- Dirt Road
- Unimproved Road
- Forest Service Roads Closed



North Arrow
 Support Team
 07/2023 10:13
 1000-Ares.rpt 1883
 Datum: LAM80
 UTM

Transportation

**Ridge Fire
Incident within an Incident Emergency Action Plan**

LEADERS INTENT – To provide efficient patient care and facilitate rapid transport to definitive care.

In the case of a serious accident requiring patient transport to a medical facility:

- The IWI commander will be established at the incident scene.
- The closest ranking Operations Leader will proceed to the IWI site and assist if necessary.
- Use the 8-line protocol to assess patient; if patient evaluation is either Red or Yellow use **DESERT MTN RPT** to contact Kalispell Dispatch to initiate medical IWI. If patient assessment is Green contact Fireline supervision for incident medical personnel to respond.
- IWI Commander has authority to request from Kalispell Dispatch Life-Flight Helicopter and/or ALS Ambulance along with incident medical personnel.
- If patient assessment is Red, IWI Commander is encouraged to activate multiple transport options. IWI Commander will utilize appropriate option for patient transport to definitive care.
- For extraction forest aircraft, utilize Incident Air to Ground.
If using an air ambulance, use TAN (155.3400 RX/TX) to communicate with air ambulance.
- Patients evaluated as Green notify nearest supervisor of the location of the incident and assigned EMT to determine treatment and transport.
- Upon notification of a serious accident, the following will report to nearest radio: Incident Commander and Operations Section Chief.
- Incident radio traffic will be monitored by the Kalispell Interagency Dispatch Center 24/7.

Approved by:



Incident Commander

MEDICAL PLAN (ICS 206 WF)

Controlled Unclassified Information//Basic

Medical Incident Report

FOR A NON-EMERGENCY INCIDENT, WORK THROUGH CHAIN OF COMMAND TO REPORT AND TRANSPORT INJURED PERSONNEL AS NECESSARY.

FOR A MEDICAL EMERGENCY: IDENTIFY ON SCENE INCIDENT COMMANDER BY NAME AND POSITION AND ANNOUNCE "MEDICAL EMERGENCY" TO INITIATE RESPONSE FROM IMT COMMUNICATIONS/DISPATCH.

Use the following items to communicate situation to communications/dispatch.

1. CONTACT COMMUNICATIONS / DISPATCH (Verify correct frequency prior to starting report)

Ex: "Communications, Div. Alpha. Stand-by for Emergency Traffic."

2. INCIDENT STATUS: Provide incident summary (including number of patients) and command structure.

Ex: "Communications, I have a Red priority patient, unconscious, struck by a falling tree. Requesting air ambulance to Forest Road 1 at (Lat./Long.) This will be the Trout Meadow Medical, IC is TFLD Jones. EMT Smith is providing medical care."

Severity of Emergency / Transport Priority	<input type="checkbox"/> RED / PRIORITY 1 Life or limb threatening injury or illness. Evacuation need is IMMEDIATE <i>Ex: Unconscious, difficulty breathing, bleeding severely, 2° – 3° burns more than 4 palm sizes, heat stroke, disoriented.</i> <input type="checkbox"/> YELLOW / PRIORITY 2 Serious Injury or illness. Evacuation may be DELAYED if necessary. <i>Ex: Significant trauma, unable to walk, 2° – 3° burns not more than 1-3 palm sizes.</i> <input type="checkbox"/> GREEN / PRIORITY 3 Minor Injury or illness. Non-Emergency transport <i>Ex: Sprains, strains, minor heat-related illness.</i>	
Nature of Injury or Illness & Mechanism of Injury		Brief Summary of Injury or Illness <i>(Ex: Unconscious, Struck by Falling Tree)</i>
Transport Request		Air Ambulance / Short Haul/Hoist Ground Ambulance / Other
Patient Location		Descriptive Location & Lat. / Long. (WGS84)
Incident Name		Geographic Name + "Medical" <i>(Ex: Trout Meadow Medical)</i>
On-Scene Incident Commander		Name of on-scene IC of Incident within an Incident <i>(Ex: TFLD Jones)</i>
Patient Care		Name of Care Provider <i>(Ex: EMT Smith)</i>

3. INITIAL PATIENT ASSESSMENT: Complete this section for each patient as applicable (start with the most severe patient)

Patient Assessment: See IRPG page 106

Treatment:

4. TRANSPORT PLAN:

Evacuation Location (if different): (Descriptive Location (drop point, intersection, etc.) or Lat. / Long.) Patient's ETA to Evacuation Location:

Helispot / Extraction Site Size and Hazards:

5. ADDITIONAL RESOURCES / EQUIPMENT NEEDS:

Example: Paramedic/EMT, Crews, Immobilization Devices, AED, Oxygen, Trauma Bag, IV/Fluid(s), Splints, Rope rescue, Wheeled litter, HAZMAT, Extrication

6. COMMUNICATIONS: Identify State Air/Ground EMS Frequencies and Hospital Contacts as applicable

Function	Channel Name/Number	Receive (RX)	Tone/NAC *	Transmit (TX)	Tone/NAC *
COMMAND					
AIR-TO-GRND					
TACTICAL					

7. CONTINGENCY: Considerations: If primary options fail, what actions can be implemented in conjunction with primary evacuation method? Be thinking ahead.

8. ADDITIONAL INFORMATION: Updates/Changes, etc.

REMEMBER: Confirm ETA's of resources ordered. Act according to your level of training. Be Alert. Keep Calm. Think Clearly. Act Decisively.

