

INCIDENT ACTION PLAN

Ridge Fire

MT-FNF-000518

P1QGT5 (0110)



OPERATIONAL PERIOD

AUGUST 16, 2023

0600 – 1800



INTENTIONALLY LEFT BLANK

ORGANIZATION ASSIGNMENT LIST (ICS 203)

1. Incident Name: RIDGE FIRE		2. Operational Period: Date From: 8/16/2023 Time From: 0600		Date To: 8/16/2023 Time To: 1800	
3. Incident Commander(s) and Command Staff:			7. Operation Section:		
IC/UC's	Rocky W. Opliger / Jake Cagle(T)	Operations	David Pereira / Kyle Jacobson / Drew Graham / Kerri Williamson(T)		
Deputy	Mike Nobles	Deputy Operations			
Safety Officer	Michael Alforque / Mike Huneke(T) / Sam Willbanks	Night Ops			
Information Officer	Sean Collins / Stephanie Bishop / Darren McMillin / Derek Tisinger / Sonny Saghera / Thanh Nguyen / Nick Arnett	Staging Area			
Liaison Officer	Jason Collier / Sam Wilbanks	Branch			
HRSP	Adam Alvarez	Division/Group	A	Ryan Regelin / Mike Greer(T)	
4. Agency/Organization Representatives:		Division/Group	G	Grahm Rice	
Agency/Organization	Name	Division/Group	M	Todd Ruzicka	
MT-FNF AA	Carol Hatfield	Division/Group	R	Joe McGinn / Jace Sheckla(T)	
MT-FNF AA (T)	Bill Mulholland	Division/Group	W	David Soldavini / Ron Brewer(T)	
IBA MT-FNF	Biddy Simet	Division/Group	STRUCTURE	Carrie Thaler / Nathan Basford(T)	
Flathead County Sheriff	Bian Heino	Division/Group	CONTINGENCY	Adam Booth	
NPS Glacier	David Roemer	Division/Group	DD	Joe Gonzalez	
IARR	Matt Dillon	Branch			
IARR	Dan Anerino	Division/Group			
Coram Experimental Forest	David Wright	Division/Group			
CCC AREP	Miguel Diaz	Division/Group			
		Division/Group			
		Branch			
		Division/Group			
		Division/Group			
5. Planning Section:		Division/Group			
Chief	Joe Scuri / Jeremy Camacho(T)	Division/Group			
Deputy	Thomas Reaves(T)	Branch			
Resource Unit	Sergio Arjonilla / Ryan Da Rosa(T) / Dwayne Preston(T) / Jeff Oliver(T)	Division/Group			
Situation Unit	Michael Hoose / Damian Guilliani / John Hamer / Daniel Eiszele	Division/Group			
Lead READ	Chris Hoge	Division/Group			
Documentation Unit	Emil Picchi (Virtual)	Division/Group			
Demobilization Unit	Jeffrey Ferguson	Air Operations Branch	Director:	Staci Dickson	
GISS	Matthew Eister / Erin Opliger / Travis Coughlin / Chris Barrett	Air Support Group Supervisor	Rita Clipperton / Roger Caballero(T)		
FBAN	Diondray Wiley	Air Tactical Group Supervisor	Jay Walter		
IMET	Bob Hoenisch				
Air Resource Advisor	Margaret Key				
Training Tech Spec	Emil Picchi (Virtual)				
SCKN	Bob Bundy(T) / Ben Turcea(T)				
6. Logistics Section					
Chief	Cheryl Raines / Jennifer Wells(T)				
Supply Unit	Jennifer Armstrong	8. Finance/Administration Section:			
Facilities Unit	Martie Hale / Adam Briggs(T)	Chief	Judy Reynolds / Vicki Wilson		
Ground Support Unit	Jeff Burch	Time Unit	Sheila Miner		
Communications Unit	Salvador Bonilla Jr. / Kevin Janes	Procurement Unit	Craig Ericson		
Medical Unit	Erick Williams / Jeffrey Brooks(T) / Samuel Crenshaw(T)	Comp/Claims Unit	Scott Parsons		
Security Manager	Kevin Arnold	Cost Unit	Tami Monahan		
RCDM	Aron Levin / DeQuincy Gordon(T)	Loni Holt / Evelyn Trujillo (Virtual)			
Prepared By: Name:	Ryan Da Rosa	Position/Title:	RESL(T)	Signature:	<i>Ryan Da Rosa</i>
ICS 203		Date/Time:	8/15/2023 2300 hours		



Ridge Fire Weather Forecast

FORECAST NO: 8

PREDICTION FOR: Wednesday

SHIFT DATE: 08/16/23

FORECAST ISSUED: 08/15/23 at 2100 MDT

NAME OF FIRE: Ridge

UNIT: MT-FHA

SIGNED: Bob Hoenisch - Incident Meteorologist

text/email obs: [406-899-4112](tel:406-899-4112)/robert.hoenisch@noaa.gov

... Record Heat and Very Low Afternoon RH Through Thursday...

*****Fire Weather Watch for Gusty Winds and Low RH Thursday Afternoon/Evening*****

WEATHER DISCUSSION: A strong ridge of high pressure aloft will maintain near record heat and continued dryness through Thursday with afternoon humidity below 20% and poor overnight humidity recovery outside of drainage bottoms/valleys. West wind over ridges and areas with exposure or terrain alignment to the west will see a few afternoon gusts of 15-20 mph, otherwise slope/terrain-driven winds at 10 mph or less prevail across lower slopes and drainages with a few afternoon gusts to 15 mph.

TODAY:

SKY/WEATHER: Mostly sunny.

Max Temperature: 95-100 lower elevations (below 4500 ft) and 87-93 mid-slopes to ridges.

Min RH: 14-19%.

20 ft WINDS: Slope/Valley - Becoming upslope/up-drainage 4-9 mph by 1200. A few westerly gusts around 15 mph in areas with exposure to the west and/or terrain alignment.

Ridgetop - West 6-12 mph with afternoon gusts around 20 mph.

LAL: 1

Chance of Wetting Rain (0.10"): Zero

HAINES INDEX: 3 (Very Low)

TONIGHT:

SKY/WEATHER: Partly cloudy.

Min Temperature: 52-57 valleys and drainage bottoms, 60-65 mid-slopes to ridgetops.

Max RH: 65-70% valleys and drainage bottoms, 35-40% mid-slopes to ridgetops.

20 ft WINDS: Slope/Valley - Becoming downslope/down-drainage 3-8 mph by 2000.

Ridgetop - West 5-10 mph. Gusts to 15 mph.

LAL: 1

Chance of Wetting Rain (0.10"): Zero

Outlook for THURSDAY:

SKY/WEATHER: Partly cloudy.

Max Temperature: 95-100 lower elevations (below 4500 ft) and 87-93 mid-slopes to ridges.

Min RH: 13-18%.

20 ft WINDS: Slope/Valley - Becoming west to southwest 5-10 mph after 1200 with afternoon gusts to 20 mph in areas with exposure to the west or terrain alignment.

Ridgetop - West 5-10 mph increasing to 10-15 mph in the afternoon with gusts around 25 mph. Gusts to 30 mph possible on ridgetops above 6000 ft.

Extended Forecast Discussion: Slight moderation in temperature and humidity is possible Friday though breezy winds may continue before a more noticeable moderation in temperature and humidity occurs this weekend.

8/15/2023 observations thru 2000	Min Temp	Max RH	Max Temp	Min RH	Peak Wind	Precipitation
IRAWS46-Desert Mtn (6360')	68	33%	86	21%	W 20 mph	0.00"
IRAWS45-Firefighter Mtn (5683')	65	37%	90	18%	SW 26 mph	0.00"
West Glacier RAWS (3165')	48	100%	100	17%	W 13 mph	0.00"
Hungry Horse RAWS (3123')	51	93%	99	15%	NW 23 mph	0.00"

FIRE BEHAVIOR FORECAST

FORECAST NUMBER: 8	TYPE OF FIRE Wildfire
FIRE NAME: Ridge	OPERATIONAL PERIOD Wednesday August 16, 2023
DATE ISSUED Tuesday August 15, 2023	TIME ISSUED 2100
UNIT MT-Flathead National Forest	SIGNED Diondray Wiley, Fire Behavior Analyst (FBAN)

INPUTS

WEATHER SUMMARY

WEATHER: Mostly Sunny

MAX TEMP: Below 4500ft 95-100° mid-slope and ridge tops 87-93°.

Humidity: 14-19%

20 FOOT WINDS: Valleys/Lower Slope: Becoming upslope/up-drainage 4-9 mph by 1200, a few westerly gust 15 with West exposures or terrain alignment.

Ridge/Upper slope: West 6-12 mph with an afternoon gust around 20mph

Haines 3 LAL 1

FUELS: The major fuel types, found in and around the fire area include compact timber stands, timber Understory, brush and heavy down and dead.

Ignition Receptiveness: ERC: 43 at the 97th percentile. **Burn Index:** 35 at the 96th percentile.

Probability of Ignition: 89-93% **Spotting distance:** Ridge top timber .4 mile, brush .2 mile

Dryness: Dead and down fuel moistures: **1 hour** – 3% **10 hour**-10 %, **100 hour** -11%, **1000 hour**-14%.

FIRE BEHAVIOR

Another high risk burn environment day for the region. Anticipate a longer burn period due to poor overnight recoveries. Alignment of fuel and slope can translate to a spotting problem. Expect fire behavior to increase once the inversion has lifted, approx. 1100-1200 (smoke dependent). Be aware of the fire behavior in your immediate location and surrounding areas. Most blow-ups happen between 1400-1600.

SPECIFIC FIRE BEHAVIOR:

Division A: Minimal fire activity, backing, interior smoldering and creeping. Possible flare-ups, roll-out, and interior single tree torching.

Division G: Moderate fire activity, interior smoldering and creeping. Potential for roll-out, spotting and flare-ups in heavy down and dead. Topographical features can channel wind and intensify fire behavior, near the Golf/ Mike Division break.

Division M: Active fire behavior, interior smoldering and creeping. Potential for flare-ups in heavy down and dead near the line, roll-out and spotting.

Division R: Active fire behavior, interior smoldering and creeping. Anticipate backing and possible torching and spotting into Highline Loop on the leeward side of Hungry Horse Mountain. Interior islands will continue to be consumed.

Division W: Active fire behavior, interior smoldering and creeping. Backing (near 38 rd.). Potential for roll-out and flare-ups in heavy down and dead. Expect an increase in fire behavior in fuels treatment areas (type converted fuel beds). Plan for the West wind to materialize in the Hungry Horse Creek drainage.

Aviation Safety/ Watchout:

Are people on the ground aware of the effects of the helicopter's rotor wash?

Safety Message/ Watch Out Situations:

Fires tend to give you warning that they are about to get up and move! Watch for these thresholds: Temperatures at 90+ degrees, humidity below 20%, and winds more than 20 m.p.h. HEED these thresholds and COMMUNICATE them to those around you.

ASSIGNMENT LIST (ICS 204 WF)

CONTROLLED UNCLASSIFIED
INFORMATION//BASIC

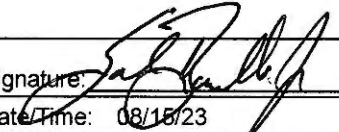
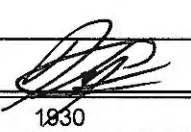
1. Incident Name:		2. Operational Period:				3. Branch		Division	
RIDGE FIRE		Date From: 08/16/23	Date To: 08/16/23	Time From: 0600	Time To: 1800	A			
4. Operations Personnel:						Page 1 of 2		Alpha	
Operations Section Chief: David Pereira / Kyle Jacobson / Drew Graham / Kerri Williamson(T)				Night Ops:					
Branch Director:				Branch Safety:					
Division/Group Supervisor: Ryan Regelin / Mike Greer(T)				Air Attack: Jay Walter					
5. Resources Assigned:		** Resources Below in Bold are 12 Hour **							
Resource Identifier	ALS	LWD	Leader	Personnel	Request #	Hours	Reporting Location		
CRW1 ALTA IHC		8/21	BOGDANOFF, BRYAN	22	C-11	0600-1800	RIVER RANCH ICP		
CRW2IA KEYSTONE		8/20	NOVITSKY, JACOB	21	C-7	0600-1800	RIVER RANCH ICP		
CRW2 MARLETTE PEAK		8/27	FOSTER, JASON	23	C-9	0600-1800	RIVER RANCH ICP		
CRW2 R&R 3		8/16	CASTRO, JOSE	20	C-3	0600-1800	RIVER RANCH ICP		
CRW2 R&R 2		8/16	CISNEROS, BERNABE	20	C-2	0600-1800	RIVER RANCH ICP		
ENG3 SOLOMON		8/23	SOLOMON, TODD	3	E-97	0600-1800	RIVER RANCH ICP		
ENG6 MOMTF E611		8/20	CORTES, BRANDON	3	E-120	0600-1800	RIVER RANCH ICP		
ENG6 UTASF E611		8/19	BELGE, ZACHARY	5	E-41	0600-1800	RIVER RANCH ICP		
WTT2 WEBER FD		8/20	SEXTON, THOMAS	2	E-56	0600-1800	RIVER RANCH ICP		
WTT2 UCON FD		8/23	NORMAN, KENDALL	2	E-99	0600-1800	RIVER RANCH ICP		
WTS2 MARTIN CITY		8/24	TORPIN, TOM	2	E-61	0600-1800	RIVER RANCH ICP		
SKG2 DENNISON		8/23	DENNISON, LARRIK	2	E-90	0600-1800	RIVER RANCH ICP		
SKG3 SCHLEGEL		8/22	HUNT, NATHAN	2	E-89	0600-1800	RIVER RANCH ICP		
TFLD MECHAM		8/27	MECHAM, BODE	1	O-138	0600-1800	RIVER RANCH ICP		
TFLD REYNOLDS (T)		8/18	REYNOLDS, CLIFFORD	1	O-24	0600-1800	RIVER RANCH ICP		
HEQB RABLIN		8/25	RABLIN, EDWARD	1	O-101	0600-1800	RIVER RANCH ICP		
FMOD DRAGONHEAD		8/18	STINGER, CODY	2	O-14	0600-1800	RIVER RANCH ICP		
EMPF CAPPS		8/26	CAPPS, LARISSA	1	O-112	0600-1800	RIVER RANCH ICP		
6. Work Assignments:									
Construct direct line from Emery Creek to the 590E road.									
Mop-up and secure control lines to the extent necessary to keep the fire in its current footprint.									
7. Special Instructions:									
FOBS may be conducting work in division and will check in with DIVS prior to conducting work.									
Before doing work in the Coram Experimental Forest, coordinate with READ David Wright (406) 531-0980.									
REAFs will be working throughout all divisions. REAFS and READS will contact division when they enter and exit divisions.									
SOFR Martin will be working in divisions Alpha and Whiskey. SOFR Martin will contact division when entering and exiting divisions.									
8. Communications									
Name	Ch	Function	Rx Freq	Rx Tone	Tx Freq	Tx Tone	Mode	Notes	
NIFC C3	1	COMMAND	170.4250	(T3) 131.8	168.0750	(T3) 131.8	A	COMMAND TO ICP	
TAC 4	4	TACTICAL	168.0500	(T3) 131.8	168.0500	(T3) 131.8	A		
A/G PRI	13	A/G PRI	173.8375	0.0	173.8375	(T2) 123.0	A	AIR TO GROUND PRIMARY	
TAN	15	MEDICAL A/G	155.3400	0.0	155.3400	(T6) 156.7	A		
AIRGUARD	16	AIRGUARD	168.6250	0.0	168.6250	(T1) 110.9	A		
9. Prepared by: Name:									
Sergio Arjonilla / Ryan Da Rosa(T) / Dwayne Preston(T) / Jeff Oliver(T)				RESL		Signature: _____			
ICS 204		Date/Time: 8/15/2023 2200				Personnel Count: 133			

ASSIGNMENT LIST (ICS 204 WF)

CONTROLLED UNCLASSIFIED
INFORMATION//BASIC

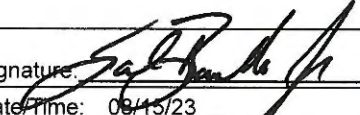
1. Incident Name:		2. Operational Period:				3. Branch		Division		
RIDGE FIRE		Date From: 08/16/23	Date To: 08/16/23			G		Golf		
		Time From: 0600	Time To: 1800							
4. Operations Personnel:						Page 1 of 2				
Operations Section Chief: David Pereira / Kyle Jacobson / Drew Graham / Kerri Williamson(T)		Night Ops:								
Branch Director:		Branch Safety:								
Division/Group Supervisor: Grahm Rice		Air Attack: Jay Walter								
5. Resources Assigned:		** Resources Below in Bold are 12 Hour **								
Resource Identifier	ALS	LWD	Leader	Personnel	Request #	Hours	Reporting Location			
CRW1 LEWIS & CLARK IHC		8/24	WYDRA, NICHOLAS	22	C-14	0600-1800	RIVER RANCH ICP			
CRW1 LOLO IHC		8/28	FAIELLA, SHAWN M	24	C-22	0600-1800	RIVER RANCH ICP			
CRW1 SMITH RIVER IHC		8/24	DENLINGER, DOUGLAS	21	C-15	0600-1800	RIVER RANCH ICP			
CRW2IA TETON IHC		8/21	KULLA, TYLER	22	C-8	0600-1800	RIVER RANCH ICP			
CRW2IA MIDEWIN		8/25	HOFFMAN, JERRY	19	C-16	0600-1800	RIVER RANCH ICP			
CRW2 PNW FIRE		8/28	ESQUIBEL, MIGUEL	20	C-20	0600-0600	RIVER RANCH ICP			
ENG3 SHERIDAN		8/25	SHERIDAN, BOB	4	E-110	0600-1800	RIVER RANCH ICP			
ENG3 AAA FORESTRY		8/25	MIX-CATRON, JEFF		E-112	0600-1800	RIVER RANCH ICP			
ENG3 CASTLE MOUNTAIN		8/25	TILLER, JOHN	3	E-111	0600-1800	RIVER RANCH ICP			
ENG3 LL MEADOW WILDFIRE		8/25	GRACIE, REED	3	E-109	0600-1800	RIVER RANCH ICP			
WTT1 CEDAR CITY FD		8/29	SMITH, JORDAN	2	E-123	0600-1800	RIVER RANCH ICP			
WTS2 ROCKY MOUNTAIN		8/19	LODGE, CRAIG	1	E-63	0600-1800	RIVER RANCH ICP			
WTS2 MARION VFD		8/27	BLANKENSHIP, BOB	1	E-125	0600-1800	RIVER RANCH ICP			
WTS2 WALKING Y4		8/16	MUTCHLER, CHRIS	1	E-27	0600-1800	RIVER RANCH ICP			
EMPF SCHMIDT		8/24	SCHMIDT, RODNEY	1	O-96	0600-1800	RIVER RANCH ICP			
EMTF GRIFFITH		8/25	GRIFFITH, HAYDEN	1	O-116	0600-1800	RIVER RANCH ICP			
EMPF FOX		8/26	FOX, JAMES	1	O-109	0600-1800	RIVER RANCH ICP			
EMPF SOWELL		8/27	SOWELL, MICHAEL	1	O-111	0600-1800	RIVER RANCH ICP			
6. Work Assignments:										
Construct direct line on the West side of the fire to Emery Ridge.										
Mop-up and secure control lines to the extent necessary to keep the fire in its current footprint.										
7. Special Instructions:										
FOBS may be conducting work in division and will check in with DIVS prior to conducting work.										
Before doing work in the Coram Experimental Forest, coordinate with READ David Wright (406) 531-0980.										
REAFs will be working throughout all divisions. REAFs and READS will contact division when they enter and exit divisions.										
SOF2 Carothers will be working in divisions G/M/R. SOF2 Carothers will contact division when entering and exiting divisions.										
8. Communications										
Name	Ch	Function	Rx Freq	Rx Tone	Tx Freq	Tx Tone	Mode	Notes		
NIFC C3	1	COMMAND	170.4250	(T3) 131.8	168.0750	(T3) 131.8	A	COMMAND TO ICP		
TAC 5	5	TACTICAL	168.2000	(T3) 131.8	168.2000	(T3) 131.8	A			
A/G PRI	13	A/G PRI	173.8375	0.0	173.8375	(T2) 123.0	A	AIR TO GROUND PRIMARY		
TAN	15	MEDICAL A/G	155.3400	0.0	155.3400	(T6) 156.7	A			
AIRGUARD	16	AIRGUARD	168.6250	0.0	168.6250	(T1) 110.9	A			
9. Prepared by: Name:		Sergio Arjonilla / Ryan Da Rosa(T) / Dwayne Preston(T) / Jeff Oliver(T)				RESL		Signature: _____		
ICS 204		Date/Time: 8/15/2023 2200				Personnel Count: 147				

INTENTIONALLY LEFT BLANK

1. Incident Name: RIDGE FIRE Incident Channels			2. Date/Time Prepared Date: 08/15/2023 Time: 1930			3. Operational Period: Date From: 08/16/23 Time From: 0600 Date To: 08/16/23 Time To: 1800			
4. Communications									
Ch#	Function	Name	Assigned To	Rx Freq	Rx Tone	Tx Freq	Tx Tone	Mode	Notes
1	COMMAND	NIFC C3	ALL DIVS	170.4250	(T3) 131.8	168.0750	(T3) 131.8	A	COMMAND TO ICP
2	COMMAND	NIFC C6	FUTURE	168.4750	(T3) 131.8	165.4000	(T3) 131.8	A	
3		BLANK	FUTURE						
4	TACTICAL	TAC 4	DIV A	168.0500	(T3) 131.8	168.0500	(T3) 131.8	A	
5	TACTICAL	TAC 5	DIV G	168.2000	(T3) 131.8	168.2000	(T3) 131.8	A	
6	TACTICAL	TAC 6	DIV M	168.6000	(T3) 131.8	168.6000	(T3) 131.8	A	
7	TACTICAL	TAC 7	DIV R	166.7250	(T3) 131.8	166.7250	(T3) 131.8	A	
8	TACTICAL	TAC 8	DIV W	166.7750	(T3) 131.8	166.7750	(T3) 131.8	A	
9	TACTICAL	TAC 9	STR / CONT / DIV DD	168.2500	(T3) 131.8	168.2500	(T3) 131.8	A	STR / CONT / DIV DD
10	FOREST RPT	DESERT	ALL DIVS	173.1125	0.0	164.3750	(T10) 107.2	A	KALISPELL DISPATCH
11	MUTUAL FD TAC	RED	MUTUAL FIRE TAC	154.0700	0.0	154.0700	(T6) 156.7	A	LOCAL FD TACTICAL
12	ROADS	ROADS	ALL DIVS	151.5050	0.0	151.5050	(T26) 94.8	A	LOGGING TRAFFIC CONTROL
13	A/G PRI	A/G PRI	ALL DIVS	173.8375	0.0	173.8375	(T2) 123.0	A	AIR TO GROUND PRIMARY
14	A/G SEC	A/G SEC	ALL DIVS	171.8250	0.0	171.8250	0.0	A	AIR TO GROUND SECONDARY
15	MEDICAL A/G	TAN	ALL DIVS	155.3400	0.0	155.3400	(T6) 156.7	A	LOCAL MEDICAL A/G
16	AIRGUARD	AIRGUARD	ALL DIVS	168.6250	0.0	168.6250	(T1) 110.9	A	EMERGENCY CONTACT
17									
18									
19									
20	AIRGUARD	AIRGUARD	ALL DIVS	168.6250	0.0	168.6250	(T1) 110.9	A	EMERGENCY CONTACT
5. Special Instructions									
* LAST CLONE 8/15/2023 COMMUNICATION PHONE NUMBER 208-850-2701									
6. Prepared by (Communications Unit Leader): Name: Sal Bonilla Jr. / Kevin Janes						Signature: 			
ICS 205 - CONTROLLED UNCLASSIFIED INFORMATION//BASIC						Date/Time: 08/15/23 1930  8/15/23			

ICS 205 - INCIDENT RADIO COMMUNICATIONS PLAN

CONTROLLED UNCLASSIFIED INFORMATION//BASIC

1. Incident Name: <div style="text-align: center;">RIDGE FIRE I/A</div>			2. Date/Time Prepared Date: 08/15/2023 Time: 1930			3. Operational Period: Date From: 08/16/23 Date To: 08/16/23 Time From: 0600 Time To: 1800				
4. Communications										
Ch#	Function	Name	Assigned To	Rx Freq	Rx Tone	Tx Freq	Tx Tone	Mode	Notes	
1	TACTICAL	TAC 1		172.2250	(T10) 107.2	172.2250	(T10) 107.2	A		
2	TACTICAL	TAC 2		172.3750	(T10) 107.2	172.3750	(T10) 107.2	A		
3	TACTICAL	TAC 3		154.3025	(T10) 107.2	154.3025	(T10) 107.2	A		
4	TACTICAL	FNF WRK 1		168.1625	0.0	168.1625	(T7) 167.9	A		
5	COMMAND	CMD DIR	RIDGE COMMAND DIR	167.2500	(T10) 107.2	167.2500	(T10) 107.2	A	RIDGE COMMAND DIRECT	
6	COMMAND	CMD RPT	RIDGE COMMAND RPT	167.2500	(T10) 107.2	162.2625	(T10) 107.2	A	RIDGE COMMAND REPEATER	
7	FOREST DIR	FNF DIR	FOREST DIRECT	173.1125	0.0	173.1125	(T2) 123.0	A	FNF DIRECT	
8	FOREST RPT	DESERT	FOREST REPEATER	173.1125	0.0	164.3750	(T10) 107.2	A	KALISPELL DISPATCH	
9	A/G	FNF A/G	FOREST A/G	169.1250	0.0	169.1250	(T7) 167.9	A	FOREST AIR TO GROUND	
10	A/G	RIDGE A/G	ALL DIVS	173.8375	0.0	173.8375	(T2) 123.0	A	RIDGE A/G PRIMARY	
11	A/G	AREA A/G	3 A/G52	168.3875	0.0	168.3875	(T2) 123.0	A	AREA A/G 3RD	
12	MUTUAL FD TAC	MAROON	MUTUAL FD PRI	154.2800	0.0	154.2800	(T6) 156.7	A	LOCAL FD TAC	
13	MUTUAL FD TAC	SCARLET	MUTUAL FD SEC	154.2950	0.0	154.2950	(T6) 156.7	A	LOCAL FD TAC	
14	MUTUAL FD TAC	RED	MUTUAL FD IA	154.0700	0.0	154.0700	(T6) 156.7	A	LOCAL FD IA	
15	MEDICAL A/G	TAN	MT MEDICAL A/G	155.3400	0.0	155.3400	(T6) 156.7	A	LOCAL MEDICAL A/G	
16	AIRGUARD	AIRGUARD	ALL DIVS	168.6250	0.0	168.6250	(T1) 110.9	A	EMERGENCY CONTACT	
17										
18										
19										
20	AIRGUARD	AIRGUARD	ALL DIVS	168.6250	0.0	168.6250	(T1) 110.9	A	EMERGENCY CONTACT	
5. Special Instructions										
* LAST CLONE 8/15/2023 COMMUNICATION PHONE NUMBER 208-850-2701										
6. Prepared by (Communications Unit Leader): Name: Sal Bonilla Jr. / Kevin Janes						Signature: 				
ICS 205 - CONTROLLED UNCLASSIFIED INFORMATION//BASIC						Date/Time: 08/15/23 1930		8/15/2023		

AIR OPERATIONS SUMMARY ICS-220						Time Prepared 1600	Date Prepared Tuesday, August 15, 2023	Prepared By Staci Dickson													
Incident Name / Number RIDGE FIRE / MT-FNF-000518		Sunrise 6:30	Startup 7:00	Cutoff 20:20	Sunset 20:50	Shutdown 21:20	Operational Period - Date Wednesday August 16, 2023		Operational Period - Time 0700-1800												
General Remarks, Safety Notes, Hazards, Air Operations Special Equipment, etc. Backcountry Air Traffic Freq 122.9 Keep Clear of ALL Drops, retardant or water. Ensure radios have both air to ground frequencies prior to working w/aircraft Most Aircraft listed below are prepositioned in the area and may be available as needed. After August 15, all federal aircraft will cease tactical operations by sunset. Ferry flights allowed for 30 minutes after sunset. This is due to reduced visibility caused by topography.						Helibase Information Name Ridge Latitude 48 27.734N Longitude 113 59.416W Name Latitude Longitude (use page 2 if needed)		TFR Information Request # A- 55 Radius: 5.0 NM Altitude: 10,000 MSL Centerpoint: 48 22'47"N Lat 13 54'42"W Long NOTAMS: 3/4347 Frequency 126.8250 http://tfr.faa.gov/tfr2/list.html		Rescue Ship Information <table border="1"> <thead> <tr> <th>Hoist</th> <th>Short Haul</th> </tr> </thead> <tbody> <tr> <td>Name Two Bear</td> <td>CMH ShortHaul</td> </tr> <tr> <td>Phone -911</td> <td>Dispatch</td> </tr> <tr> <td>Make/Model Bell 429</td> <td>H-125</td> </tr> <tr> <td>Location GPI</td> <td>S27</td> </tr> </tbody> </table> Request Procedure for These Aircraft: Incident Communications See Medical Plan For Additional Info		Hoist	Short Haul	Name Two Bear	CMH ShortHaul	Phone -911	Dispatch	Make/Model Bell 429	H-125	Location GPI	S27
Hoist	Short Haul																				
Name Two Bear	CMH ShortHaul																				
Phone -911	Dispatch																				
Make/Model Bell 429	H-125																				
Location GPI	S27																				
Frequencies	TX	Tone	RX	Tone	AM / FM	Position	Name	Phone	Trainee	Phone											
Command	168.0750	(T3) 131.8	170.4250	(T3) 131.8	FM	AOBD	Staci Dickson	530-277-5153													
Primary A/G	173.8375	(T2) 123.0	173.8375	0.0000	FM	ASGS	Rita Clipperton	530-575-9906	Roger Caballero	530-277-6804											
Secondary A/G	171.8250		171.8250		FM	HEBM															
					AM	HMGB 4BH	Angie Bealka	218-290-7252	Caitlin Marquez	805-260-1408											
TFR	126.8250		126.8250		AM	HMGB 4CK	Rex Sundstrom	530-559-3370													
Rotor Wing AM	132.1500		132.1500		AM																
					AM	ATGS	Jay Walter	(623) 696-8532													
					FM																
Medical A/G	155.3400	156.7 (6)	155.3400		FM																
AIRGUARD - Emergency Only	168.6250	110.9 (1)	168.6250		FM																
HELICOPTERS																					
FAA #	Type	Make/Model	Helibase	Avail	Start	Remarks	FAA #	Type	Make/Model	Helibase	Avail	Start	Remarks								
234BH	3	AS 350 B3	Ridge		0800	Assigned Short Haul			Prepositioned. May be available.												
624CK	1	S61A	MSO		0800	On Loan Tanked	9125M	1	CH54B	S27		0800	Tanked								
							950CH	1	CH47D	GPI		0800	Tanked								
							17FH	1	UH60A	HHH		0800	Bucketed								
							301HP	2	UH1H	HHH		0800	Tanked								
							114NS	3	AS 350 B3	HHH		0800	EU Forest Ship								
							350HQ	3	H-125	S27		0800	Short Haul								
FIXED WING						UNMANNED AIRCRAFT SYSTEMS															
FAA #	Type	Make/Model	Base	Avail	Start	Remarks	FAA #	Type	Model	Call Sign	Avail	Start	Remarks								
281		CL-415BAE	GPI		900																
282		CL-415BAE	GPI		900																
Notes: What was the first helicopter used for wildland firefighting? What year?																					

Ridge Fire – Safety Message

INCIDENT #MT-FNF-000518

DATE: 8/16/2023 TIME: 0600-1800 Day Shift

TRAFFIC HAZARDS AND DRIVING

- Take extra precautions when entering or exiting the roadways, **especially Highway 2**
- Maintain high visibility in the operational area and use warning lights when working on roads or traveling in smoke.
- Many roads are narrow and mid-slope, with soft shoulders. Allow heavy vehicles to pass on the uphill side. Use spotters when backing or turning around.
- Be alert for wildlife. Dusk to dawn poses the most significant potential for accidents.
- Operations is tracking logging truck activity and will coordinate with Division Supervisors and Local contract administrators

STEEP TERRAIN & ROLLING DEBRIS

- Maintain 8'-10' spacing when working & walking.
- Consider posting lookouts for rolling debris.
- Do not work above any personnel.
- Evaluate the necessity to send personnel into areas with limited access and ensure a medical evacuation plan is in place.

HEAT-RELATED ILLNESS

- Progress work levels gradually.
- Increase and monitor fluid intake, especially when work duration is long, hot, and intense.
- Take "Hydration Breaks" more frequently.
- Monitor for signs of heat exhaustion:
 - Excessive sweating
 - Nausea
 - Headache
 - Vomiting
 - Muscle cramps
 - Rapid breathing)
- Seek medical treatment when warranted.

HEAVY EQUIPMENT OPERATIONS


- Ensure communications are established with operators.
- Use hand signals if other communications are unavailable.
- Maintain a 50'-100' exclusion area around equipment.
- Use road guards as needed to control traffic.

Prepared by:
CIIMT 4 Safety Group



INCIDENT RISK ANALYSIS

ICS (215A) DAY SHIFT

BR/DV	HAZARDOUS ACTIONS – CONDITIONS	MITIGATIONS – WARNINGS – REMEDIES
ALL	TRAFFIC HAZARDS AND DRIVING	<ul style="list-style-type: none"> • Take extra precautions when entering or exiting the roadways, especially Highway 2. • Maintain high visibility in the operational area and use warning lights when working on roads or traveling in smoke. • Many roads are narrow and mid-slope, with soft shoulders. Allow heavy vehicles to pass on the uphill side. Use spotters when backing or turning around. • Be alert for wildlife. Dusk to dawn poses the greatest potential for accidents. • Be aware of and take precautions around logging truck traffic.
ALL	WEATHER	<ul style="list-style-type: none"> • Maintain continuous Situational Awareness based on the fire environment, observed fire behavior, hazards, and incident objectives. • Take weather throughout the shift to get timely and accurate information. • Is what we predicted what you are observing? • Request spot weather forecasts if you notice a notable change in the weather. • Communicate any weather changes with your crew and adjacent resources.
ALL	FIRE BEHAVIOR	<ul style="list-style-type: none"> • Are you seeing what we have predicted? • Conduct thorough assessments before starting work. • Ensure LCES is in place. • Plan & communicate your exit strategy with your crew and adjacent resources. • Provide additional briefing for new resources and maintain communications.
ALL	HEAT-RELATED ILLNESS	<ul style="list-style-type: none"> • Progress work levels gradually. • Monitor fluid intake, especially if work duration is long, hot, and intense. • Monitor signs of heat exhaustion (excessive sweating, nausea, headache, vomiting, muscle cramps, rapid breathing) and seek medical treatment when warranted.
ALL	STEEP TERRAIN & ROLLING DEBRIS	<ul style="list-style-type: none"> • Maintain 8'-10' spacing when working & walking. • Do not work above any personnel. • Evaluate the necessity to send personnel into areas with limited access.
ALL	HAZARD / DANGER TREES	<ul style="list-style-type: none"> • Follow Hazard Tree Safety Guidelines (IRPG p.20) • Limit the number of personnel around snags and their exposure time. • Fallers must be qualified for the trees being felled. • Be alert around hazard trees during wind events, even green trees. • The hazard zone extends a minimum of 2½ tree lengths. • Avoid parking vehicles or taking breaks under or near hazard trees.
ALL	DIRECT/ INDIRECT FIRELINE CONSTRUCTION	<ul style="list-style-type: none"> • Establish and maintain LCES. • Utilize favorable locations when constructing control features; i.e. lighter fuels, natural or existing barriers, and ridgelines. • Watch out if there is unburned fuel between you and the fire. • Monitor weather conditions and fire behavior.
ALL	HEAVY EQUIPMENT OPERATIONS	<ul style="list-style-type: none"> • Ensure communications are established with operators. • Use hand signals if other communications are unavailable. • Maintain a 50'-100' exclusion area around equipment. • Use road guards as needed to control traffic.
ALL	MOP UP	<ul style="list-style-type: none"> • Establish LCES. • Maintain 8-10 foot spacing when working with tools. • Wear proper PPE. • Use caution around stump holes. • Identify and mitigate snags and hazardous fire-weakened trees.
ALL	AVIATION OPERATIONS	<ul style="list-style-type: none"> • Conduct thorough mission assessments before starting work. Follow the guidelines in the SHO and other aviation guidelines and reference materials. • Ensure coordination and communication are in place and understood by all resources involved in the mission. • Ensure close coordination between Air Attack, air tankers, helicopters, and ground resources.
ALL	COMMUNICATIONS	<ul style="list-style-type: none"> • Share your Situational Awareness (hazards, changes, etc.) with those who also have a need. • Answer questions and/or ask for intel when you do not know the plan. • Ensure all personnel are familiar with the incident and IA communications plans.
ALL	WILDLIFE	<ul style="list-style-type: none"> • High concentration of wildlife in the area. • Backhaul garbage from drop points. Do not keep food inside your tent. • Do not feed bears or other wild animals. Never approach bears or cubs. • If encountering a bear, make noise, travel in a group, and keep members together. Do not surprise the bear. DO NOT RUN!
<p>INCIDENT NAME: RIDGE FIRE</p>		<p>OPERATIONAL PERIOD: 0600 – 1800</p> <p>AUGUST 16, 2023</p> <p>Date/Time Prepared: 08/15/2023 – 1430</p> 



NOTICE



You're in Bear Country

- DO NOT bring food, toiletries, or scented items into your tent.
- Sleep at least 100 yards away from the kitchen/food prep area.
- Secure food attractants properly in a bear resistant bin or in a secured building.
- Stay alert and look for bear activity, especially where visibility or hearing is limited (thick vegetation, streams).
- Make noise whenever possible to avoid surprising a bear, especially where visibility or hearing is limited. The human voice is the best deterrent, be loud.
- Travel in a group and keep members together.
- Never run from a bear.
- If a bear is hanging around, alert others, and from a safe place make it leave. Yell, set off car alarms, air horns, bang pots and pans, etc.
- If you experience any type of conflict with a bear or have any questions/concerns, immediately contact Bear Specialist Justine Vallieres at (406)250-1265.



Human Resource Message

Ridge Fire

August 16, 2023

NO TRESPASSING

Hey I wanted to take the time this morning to thank you for conducting yourselves in a professional manner for the most part on this assignment.

There is one thing I need to emphasize though. Even though it looks like we are out in the wilderness, we are actually on Private Property. The property owner has set boundaries we must adhere to.

It has been brought to my attention the boundaries have been crossed by several individuals working on this assignment.

The owner has graciously provided his beautiful property for us to conduct our mission, which is to fight the Ridge Fire, and not to encroach on the boundaries. I want to pass along a warning to you all, if anybody else encroaches the boundaries that have been set there will be consequences and including losing our privileges of using this property for fire camp.

I want to thank you in advance for your compliance.



Feel free to call/text o if you have questions, concerns, or just want to chat.

Adam Alvarez – (HRSP) (707) 373-8715

LINE ORDER FORM



ORDER #	DATE & TIME ORDERED Received from the Line	WHO PLACED ORDER DIVS, OPS, etc....	DELIVER to (DIV, Helispot, DP, etc.) Division, Heli-Spot, Drop Point, etc.	MODE of DELIVERY Drive, Helo, pick-up			
Order Received in Communications By:				TIME:			
Communications Relayed/Placed the Order To:				TIME:			
Order Shipped to the Line By (Name):				TIME:			
ITEM#	DESCRIPTION			AMOUNT			
1	1,000 Foot Hose Lay: includes the following 10 lengths, 1 1/2" x 100' Hose. 10 lengths, 1" x 100' Hose. 10ea. 1 1/2" Gated Wyes. 10ea. 1 1/2" to 1" Reducers. 10ea. 1" Nozzles.						
2	2,000 Foot Hose Lay: includes the following 20 lengths, 1 1/2" x 100' Hose. 20 lengths, 1" x 100' Hose. 20ea. 1 1/2" Gated Wyes. 20ea. 1 1/2" to 1" Reducers. 20ea. 1" Nozzles.						
3	3,000 Foot Hose Lay: includes the following 30 lengths, 1 1/2" x 100' Hose. 30 lengths, 1" x 100' Hose. 30ea. 1 1/2" Gated Wyes. 30ea. 1 1/2" to 1" Reducers. 30ea. 1" Nozzles.						
ITEM#	REQUESTED ITEM	NFES#	AMOUNT	ITEM#	REQUESTED ITEM	NFES#	AMOUNT
4	Backpack Pump, 5 gallon	1149		26	Batteries, "AA", (package)	0030	
5	Foam, 5 gallon	1145		27	Gasoline, Unleaded (gallon)		
6	Hose, 3/4 inch, 50 ft. length	1016		28	Oil, 2 Cycle Mix (quart)	0341	
7	Hose, 1 inch, 100 ft. length	0966		29	Diesel, straight (gallon)		
8	Hose, 1 1/2 inch, 100 ft. length	0967		30	Oil, Bar & Chain (gallon)	1880	
9	Increaser, 3/4" to 1"	2235		31	Fusees (box)	0105	
10	Increaser, 1" to 1 1/2"	0416		32	Torch, Drip Torch ea.	0241	
11	Nozzle, Garden 3/4 inch	0136		33	Mix, Drip Torch 3-1, 5 gal.		
12	Nozzle, Forester, 1"	0024		34	Flagging, Ribbon, Color/Roll		
13	Nozzle, KK Type, 1"	1081		35	Washcloth, Waterless	0206	
14	Nozzle, KK Type, 1 1/2"	1082		36	Water, Cubi, 5 gallon ea.	0048	
15	Reducer, 1" to 3/4"	0733		37	Water, Bottled, (case)		
16	Reducer, 1 1/2" to 1"	0010		38	Sports Drink, Gatorade (case)		
17	Tee, Hoseline, 1"x1"x 3/4"	1809		39	Food, MRE's (12 per Box)	1842	
18	Tee, Hoseline, 1"x1"x 1"	2240		40	Pump Kit, High Pressure	0870	
19	Tee, Hoseline, 1 1/2" x 1 1/2" x 1"	0230		41	Pump, High Pressure	0148	
20	Wye, Gated, 3/4" inch	0904		42	Pump Kit, Light Weight	0670	
21	Wye, Gated, 1"	0259		43	Sprinkler Kit	1048	
22	Wye, Gated, 1 1/2"	0231		44	Pump Kit, Volume	6041	
23	Tank, Collapsible. Capacity Gallons?			45	Mop-Up Kit	0772	
24	Tank, Folding/Frame. Capacity??			46	Fuel (gas/diesel/mix)		
25	Wrap, Structure (roll)	0881					

Date and Time Needed: _____ Point of Contact at Delivery Location: _____

OTHER / NOTES:

Ridge Fire

Incident Replacement Process

Try not to break or lose your toys but in the event... Submit your paperwork early!

This process is based on Region 1 USFS Incident Operating Guidelines

- Request for incident replacement must be documented on a 213 AND OF-289.
- Must have all required signatures.
- Submit paperwork to SPUL and COMP for review.
- ORDM will send request to expanded dispatch for S#.
- Upon approval by the Incident Business Advisor the S# will be emailed.
- EXPECT at least 48-72 hours for response!

Please note:

Replacement shall not be authorized using incident funds for loss or damage from normal wear and tear.

PROPERTY LOSS OR DAMAGE REPORT Fire Suppression		1. Crew Name or No. (O#, A#, E# or C#)	2. ID NO (Form OF-289) NOT APPLICABLE
		3. ISSUED TO (List: Individual Name, Home Unit Name, Home Unit Address, Email and Telephone Numbers – Fax, Cell, Work, etc.)	
4. ISSUING OFFICE OR CAMP NAME (Name of Incident Agency and the Incident Number)			
5. FIRE NAME	6. FIRE NO. (Fire Account Code)	7. TYPE EMPLOYEE (Mark one with "X") <input type="checkbox"/> Regular Govt <input type="checkbox"/> Casual Firefighter/AD <input type="checkbox"/> Other _____	
8. DESCRIPTION OF PROPERTY LOST OR DAMAGED (Include Property/Serial No. if applicable. Include approximate year of or age of equipment.)			QUANTITY
a.			
b.			
c.			
9. Employee report on circumstances of loss or damaged to property listed: (Be specific – date, place, division on fire; be descriptive of damage, loss, <u>HOW DID THE FIRE CAUSE THE DAMAGE</u> , etc.)			
10. SIGNATURE			11. DATE
12. Witness report: (Be specific – date, place, division on fire; be descriptive of damage, loss, <u>HOW DID THE FIRE CAUSE THE DAMAGE</u> what did you see, etc.)			
13. SIGNATURE			14. DATE
15. Fire Boss or Property Control Officer comments regarding loss or damage: Do not complete this section, see next page.			
16. SIGNATURE	17. TITLE	18. DATE	

Requestor Name: _____

Resource Order#: _____

Incident Supervisor:

Comments:

Name and Position: _____

Contact Phone and Email: _____

Do Not Recommend Recommended

Signature & Date: _____

Subject Matter Expert:

Supply Ground Support Communications Computer Specialist Other: _____

Comments:

Name and Position: _____

Contact Phone and Email: _____

Do Not Recommend Recommended

Signature & Date: _____

Incident Agency Representative:

(Agency Administrator, IBA, Finance Section Chief, Admin Representative, etc.)

Decision:

Do Not Approve Approved

Approved with the following contingencies:

Comments:

Name and Title: _____ Signature & Date: _____

Contact Phone: _____

Supply Unit:

Sent to dispatch on: (date) _____

Resource Order(s) Assigned: **S**- _____

TRAINING SPECIALIST MESSAGE



We can help you with all your training documentation...but it is up to you to make the best of your trainee assignment!

New Trainees: PLEASE USE THE QR CODE BELOW TO START YOUR TRAINING ASSIGNMENT. JUST ENTER YOUR INFORMATION AND YOU WILL BE CHECKED INTO THE TRAINING DATA BASE.

IF YOU HAVE ANY PROBLEMS CALL OR TEXT

Trainers: PLEASE TAKE THE TIME TO GO OVER THE POSITION TASK BOOK WITH THE TRAINEES TO SEE WHICH SPECIFIC TASKS NEED TO BE FOCUSED ON.

Trainee check in form



Exit Interview



Emil Picchi
Training Specialist
650.520.5102
TNSPEP@gmail.com

RIDGE FIRE DEMOB MESSAGE

TENTATIVE RELEASE FOR 8/16/23

O-3 TFLD CASEY HAMILTON

TENTATIVE RELEASE FOR 8/17/23

C-2 CRW2 R&R #1
 C-3 CRW2 R&R #2
 E-27 WES2 WALKING Y4
 O-1 HEQB BRYAN GROGAN
 O-2 HEQB ISAAC GANSBERG
 O-23 PIO3 IVAN HULD



**To request a flight:
 Submit your
 information at least 72
 hours in advance**

DEMOB IS LOCATED AT RIVER RANCH ICP

Resources approved for release will report to the Demob Unit to receive a checkout form. The crew leader or single resource will obtain required signatures after turning in any accountable equipment or supplies, vehicle inspections if required, completing any required documentation, and closing out with the Finance Section.

Jeff Ferguson, DMOB
 916-837-7723
 2023.ridge.demob@firenet.gov

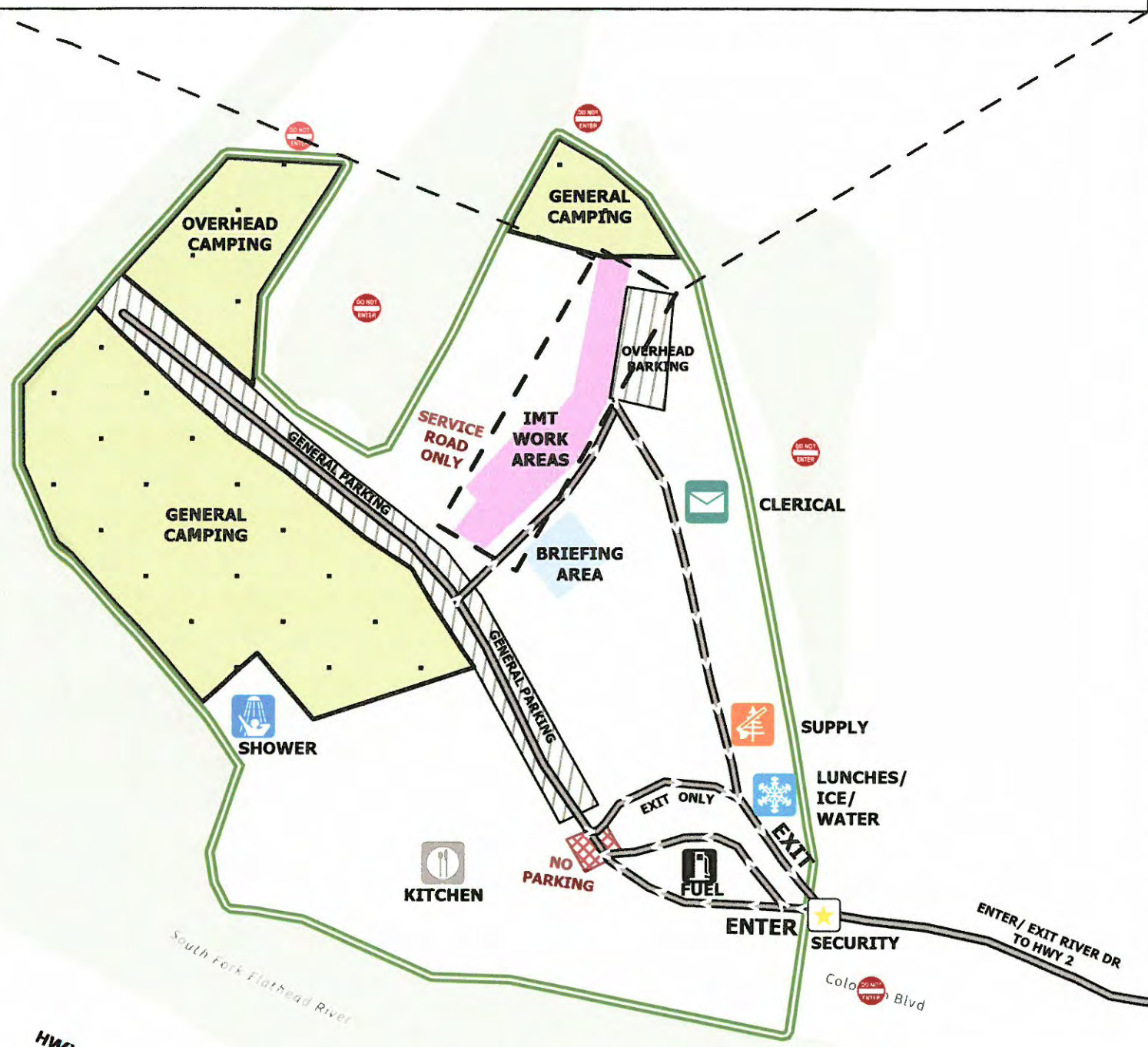
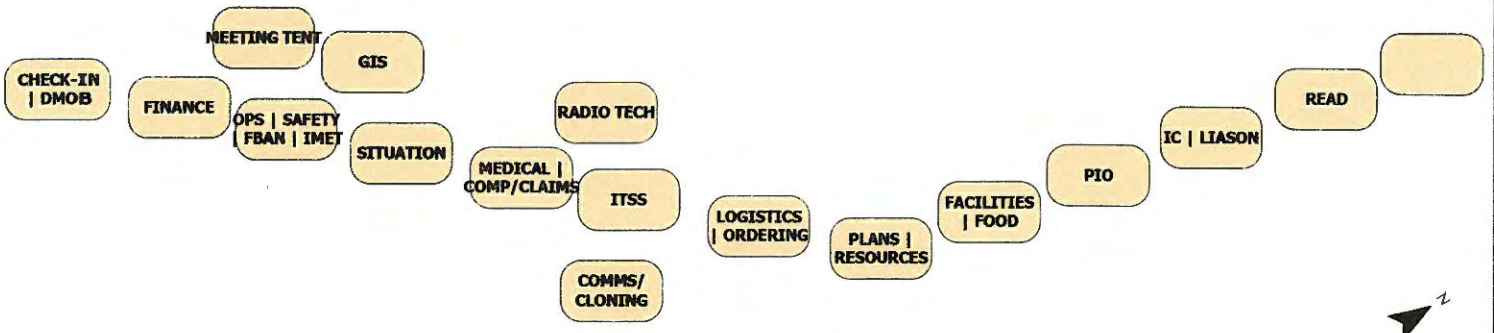
**VEHICLE INSPECTIONS:
 WEED WASH:**
 Located at KOA Staging
 251 Halfmoon Flats Rd., West Glacier, MT

FLIGHT REQUEST FORM

Request Order #	
Name as shown on photo ID	
Date of Birth	
Cell Phone	
Male or Female	
Email Address	
Last Work Date	
Flight Date	
Departure Airport Code	
Arrival Airport Code	
Rental Location	
Need ride to airport?	

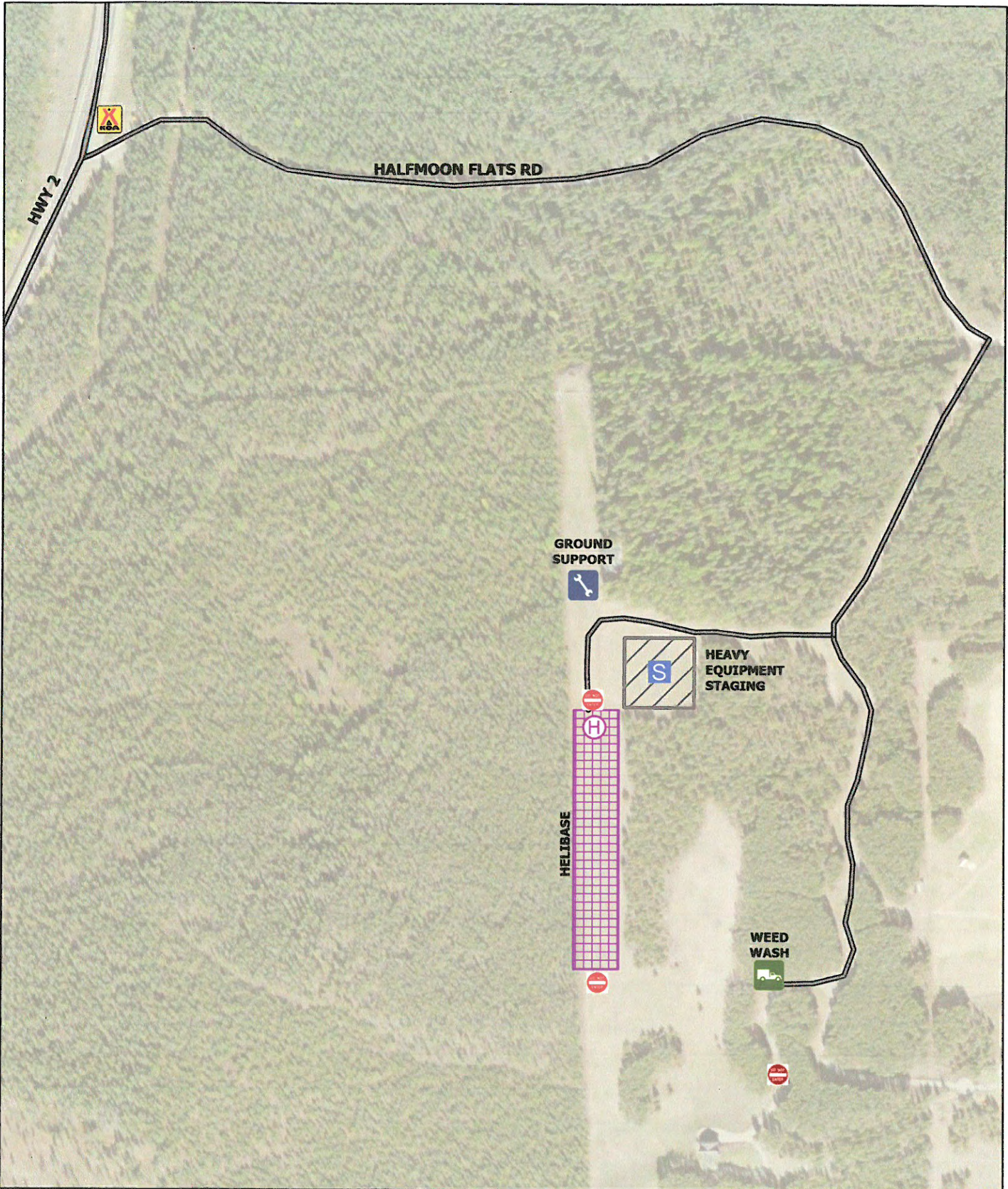


Incident Management Team Unit Locations



ICP MAP Ridge MT-FNF-000518		DO NOT ENTER	LUNCHES/ICE/WATER	IMT WORK SPACES	PARKING
		CLERICAL	SHOWER	IMT WORK AREAS	NO PARKING
		FUEL	SUPPLY	BRIEFING AREA	
		KITCHEN	SECURITY	CAMPING AREAS	

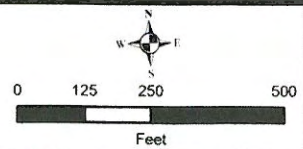
0 75 150 300
 Feet





HALFMOON CAMP
Ridge
 MT-FNF-000518



-  GROUND SUPPORT
-  HEAVY EQUIPMENT STAGING
-  HELIBASE
-  WEED WASH
-  DO NOT ENTER
-  HEAVY EQUIPMENT STAGING
-  HELIBASE



1. Incident Name				2. Operational Period					
Ridge Fire Medical Plan				Date/Time: 8/16/2023 (0600-1800)					
3. Medical Aid Stations / Ambulance Services / REMS									
Name		Location		Contact		Advanced Life Support (ALS)			
						Yes	No		
Three Rivers EMS		31 7 th Street W, Columbia Falls, MT		911 OR (406)-892-4244		X			
Kalispell Fire		Incident Ambo		Incident Dispatch / Communications		X			
Wilderness Medics		Incident Ambo		Incident Dispatch / Communications		X			
4. Air Rescue / Air Ambulance Services									
Name		Location		Type of Aircraft & Capability					
ALERT-1		Kalispell, MT		Bell 407 CCT Medical Transport					
Two Bear Air Rescue		Kalispell, MT		Bell 429 Rescue / Hoist NVG					
350 HQ		Available Through Incident Dispatch		H-125 Short-haul					
Trinity Air Ambulance		Missoula, MT		Learjet 35, Fixed Wing CCT Medical Transport					
5. Hospitals (all times estimated from incident location)									
Name & Trauma Level		GPS Datum – WGS 84 Degrees Decimal Minutes		Travel Time (From ICP)		Phone	Helipad		Address
				Air	Gnd		Yes	No	
Logan Health Whitefish Level 4		Lat: N 48° 22.51'	7 MINS	19 MINS	406-863-3500	X		1600 Hospital Way, Whitefish, MT	
		Long: W 114° 19.56'							
Logan Health Kalispell Level 3		Lat: N 48° 22.84'	10 MINS	33 MINS	406-752-5111	X		310 Sunnyview Ln, Kalispell, MT	
		Long: W 114° 19.88'							
St Patrick's Med. Center Level 2		Lat: N 113° 59.96'	45 MINS	2.5 HRS	406-543-7271	X		500 W. Broadway Missoula, MT	
		Long: W 122° 19.39'							
Harbor View Medical Regional Burn Ctr./ Level 1		Lat: N 47° 36.24'	1.5 HRS	N/A	206-744-3140	X		50 Medical Dr. North Seattle, WA	
		Long: W 122° 19.39'							
6. Division / Crew Emergency Pre-Plan				<i>Update and discuss with assigned resources daily.</i>					
Fireline EMT / Medic's Division / Branch Location									
Air Hoist site location site: Lat: / Long: / Elevation:									
Helispot: Lat: / Long: / Elevation: MED LZ:									
7. Prepared By (Medical Unit Leader)			8. Date/Time		9. Reviewed By (Safety Officer)		10. Date/Time		
MEDL Eric Williams / Jeff Brooks / Sam Crenshaw (T) 			8/15/2023 1600		SOF1 Mike Alfarque 		8/15/2023 1600		

Medical Incident Report

FOR A **NON-EMERGENCY INCIDENT**: WORK THROUGH CHAIN OF COMMAND TO REPORT AND TRANSPORT INJURED PERSONNEL AS NECESSARY.

FOR A **MEDICAL EMERGENCY**: IDENTIFY ON SCENE INCIDENT COMMANDER BY NAME AND POSITION AND ANNOUNCE **"MEDICAL EMERGENCY"** TO INITIATE RESPONSE FROM COMMUNICATIONS

Use the following items to communicate situation to communications/dispatch.

1. CONTACT COMMUNICATIONS / DISPATCH (Verify correct frequency prior to starting report)

Ex: "Communications, Div. Alpha. Stand-by for Emergency Traffic."

2. INCIDENT STATUS: Provide incident summary (including number of patients) and command structure.

Ex: "Communications, I have a Red priority patient, unconscious, struck by a falling tree. Requesting air ambulance to Forest Road 1 at (Lat./Long.)"

"This will be the Trout Meadow Medical Incident, IC is TFLD Jones. EMT Smith is providing medical care."

Severity of Emergency AND Transport Priority (priority 1, 2, 3)	<input type="checkbox"/> RED / PRIORITY 1 Life or limb threatening injury or illness. Evacuation need is IMMEDIATE <i>Ex: Unconscious, difficulty breathing, bleeding severely, 2° – 3° burns more than 4 palm sizes, heat stroke, disoriented.</i> <input type="checkbox"/> YELLOW / PRIORITY 2 Serious injury or illness. Evacuation may be DELAYED if necessary. <i>Ex: Significant trauma, unable to walk, 2° – 3° burns not more than 1-3 palm sizes.</i> <input type="checkbox"/> GREEN / PRIORITY 3 Minor injury or illness. Non-Emergency transport <i>Ex: Sprains, strains, minor heat-related illness.</i>
Nature of Injury or Illness & Mechanism of Injury	Brief Summary of Injury or Illness <i>(Ex: Unconscious, Struck by Falling Tree)</i>
Transport Request	<i>Air Ambulance / Short Haul/Hoist Ground Ambulance / Other</i>
Patient Location	<i>Descriptive Location & Lat. / Long. (WGS84)</i>
Incident Name	<i>Geographic Name + "Medical" (Ex: Trout Meadow Medical)</i>
On-Scene Incident Commander	<i>Name of on-scene IC of Incident within an Incident (Ex: TFLD Jones)</i>
Crew Patient Care	<i>Name of Care Provider (Ex: EMT Smith)</i>

3. INITIAL PATIENT ASSESSMENT: Complete this section for each patient as applicable (start with the most severe patient)

Patient Assessment: (IRPG PAGE 106)	Age:	Weight:	Chief Complaint:
Skin Signs: (color/moisture/temp)	Level of Consciousness:	BP:	HR: Respirations:
Treatment:			

4. TRANSPORT PLAN:

Evacuation Location (<i>drop point, intersection, helispot, Lat. / Long, hazards</i>)	Patient's ETA to Location:
---	----------------------------

5. ADDITIONAL RESOURCES / EQUIPMENT NEEDS:

Paramedic / EMT - Crews - Immobilization Devices - AED - Oxygen - Trauma Bag - IV/Fluid(s) - Splints - Rope rescue - Wheeled litter - HAZMAT - Extrication

6. COMMUNICATIONS: Identify State Air/Ground EMS Frequencies and Hospital Contacts as applicable

Function	Channel Name/Number	Receive (RX)	Tone/NAC *	Transmit (TX)	Tone/NAC *
COMMAND					
AIR-TO-GRND					
TACTICAL					

7. CONTINGENCY: Considerations: If primary options fail, what actions can be implemented in conjunction with primary evacuation method? *Be thinking ahead.*

8. ADDITIONAL INFORMATION: *Updates/Changes, etc.*

REMEMBER: Confirm ETA's of resources ordered. Act according to your level of training
Be Alert - Keep Calm - Think Clearly - Act Decisively

*** Follow up with MEDL upon return to ICP ***



