

# INCIDENT ACTION PLAN



## Ridge

MT-FNF-000518

P1QGT5 (0110)

## Doris Point

MT-FNF-000496

P1QJ6J (0110)

## Tin Soldier

MT-FNF-000535

P1QGHA (0110)



OPERATIONAL PERIOD

AUGUST 20, 2023

0600 – 1800



**INTENTIONALLY LEFT BLANK**

# INCIDENT OBJECTIVES (ICS 202)

<b>1. Incident Name:</b> RIDGE / DORIS POINT / TIN SOLDIER	<b>2. Operational Period:</b>	Date From: 8/20/2023 Time From: 0600	Date To: 8/20/2023 Time To: 1800
<b>3. Objective(s):</b>			
<b>Management Objectives</b>			
<u><b>Ridge Fire / Doris Point Fire</b></u> <ul style="list-style-type: none"> <li>- Manage risk to responders by ensuring hazards are identified, assessed, and mitigated.</li> <li>- Minimize impact to economy, property, and infrastructure.</li> <li>- Minimize impact to natural, cultural, wildlife and heritage resources.</li> <li>- Mitigate or eliminate environmental resource impacts as a result of fire suppression efforts.</li> <li>- Ensure coordinated, timely and accurate release of public information.</li> <li>- Foster and maintain relationships with all cooperators and stakeholders.</li> <li>- Maintain fiscal accountability and keep costs commensurate with values at risk.</li> </ul>			
<u><b>Tin Soldier Fire</b></u> <ul style="list-style-type: none"> <li>- Manage risk to responders by ensuring hazards are identified, assessed, and mitigated.</li> <li>- Minimize impact to economy, property, and infrastructure.</li> <li>- Minimize impact to natural, cultural, wildlife, and heritage resources.</li> <li>- Mitigate or eliminate environmental resource impacts as a result of fire suppression efforts.</li> </ul>			
<b>Control Objectives</b>			
<u><b>Ridge Fire / Doris Point Fire</b></u> <ul style="list-style-type: none"> <li>- North of Forest Road 38</li> <li>- South of Great Bear Wilderness</li> <li>- East of the communities along Highway 2</li> <li>- West of the Tiger River</li> </ul>			
<u><b>Tin Soldier Fire</b></u> <ul style="list-style-type: none"> <li>- Keep Sullivan fire west of the western side of Hungry Horse Reservoir (NFSR 895) and Meadow Creek (NFSR 2826) roads.</li> </ul>			
<b>Command Emphasis</b>			
<ul style="list-style-type: none"> <li>- Resiliency</li> </ul>			
<b>General Safety Message</b>			
<ul style="list-style-type: none"> <li>- "Adapt to and overcome the unexpected".</li> </ul>			
<b>5. Site Safety Plan Required?</b> Yes <input type="checkbox"/> No <input checked="" type="checkbox"/>			
<b>Approved Site Safety Plan(s) Located at:</b>			
<b>6. Incident Action Plan</b>			
<input checked="" type="checkbox"/> ICS 203	<input checked="" type="checkbox"/> ICS 220	<input checked="" type="checkbox"/> Finance	<input checked="" type="checkbox"/> Incident Replacement Process
<input checked="" type="checkbox"/> Weather	<input checked="" type="checkbox"/> Safety Message	<input checked="" type="checkbox"/> Line Order	<input checked="" type="checkbox"/> ICP Maps
<input checked="" type="checkbox"/> FBAN	<input checked="" type="checkbox"/> ICS 215A	<input checked="" type="checkbox"/> PIO	<input checked="" type="checkbox"/> ICS 206
<input checked="" type="checkbox"/> ICS 204	<input checked="" type="checkbox"/> Bear Notice	<input checked="" type="checkbox"/> Training	<input checked="" type="checkbox"/> ICS 214
<input checked="" type="checkbox"/> ICS 205	<input checked="" type="checkbox"/> HR Notice	<input checked="" type="checkbox"/> Demob	<input checked="" type="checkbox"/>
<b>7. Prepared By:</b> Jeremy Camacho		Position/Title: PSC	
<b>8. Approved by Incident Commander:</b>		Signature:	
ICS 202		Signature:	

## ORGANIZATION ASSIGNMENT LIST (ICS 203)

<b>1. Incident Name:</b> RIDGE / DORIS POINT / TIN SOLDIER		<b>2. Operational Period: Date From:</b> 8/20/2023 Time From: 0600		<b>Date To:</b> 8/20/2023 Time To: 1800	
<b>3. Incident Commander(s) and Command Staff:</b>			<b>7. Operation Section:</b>		
IC/UC's	Rocky W. Opliger / Jake Cagle(T)	Operations	David Pereira / Kyle Jacobson / Drew Graham / Kerri Williamson(T)		
Deputy	Mike Nobles	Tin Soldier Operations	Joe Gonzalez		
Safety Officer	Michael Alforque / Mike Huneke(T)	Night Ops			
Information Officer	Stephanie Bishop / Sean Collins / Darren McMillin(T)	Staging Area			
Liaison Officer	Jason Collier / Sam Willbanks	<b>Branch</b>			
HRSP	Adam Alvarez	Division/Group	A	Ryan Regelin	
<b>4. Agency/Organization Representatives:</b>		Division/Group	M	Ryan Regelin / Nathan Basford(T)	
Agency/Organization	Name	Division/Group	R	Grahm Rice / Jace Schekla(T)	
MT-FNF AA	Carol Hatfield	Division/Group	W	Dave Soldavini / Ron Brewer(T)	
MT-FNF AA	Kim Pierson	Division/Group	STAGING		
MT-FNF AA	MJ Crandall	Division/Group	DD	Guy Wilson	
IBA MT-FNF	Biddy Simet	Division/Group	CCC	Cache Gibbons	
Flathead County Sheriff	Brian Heino	Division/Group	NNN	Ryle Benke / Zak Parmentier(T)	
NPS Glacier	David Roemer	Division/Group			
IARR	Matt Dillon	Division/Group			
IARR	Dan Anerino	Division/Group			
Coram Experimental Forest	David Wright	<b>Branch</b>			
CCC AREP	Miguel Diaz	Division/Group			
<b>5. Planning Section:</b>		Division/Group			
Chief	Jeremy Camacho(T)	Division/Group			
Deputy	Thomas Reaves(T)	Division/Group			
Resource Unit	Sergio Arjonilla / Ryan Da Rosa(T) / Jeff Oliver(T) / Dwayne Preston(T)	<b>Branch</b>			
Situation Unit	Michael Hoose / Damian Guilliani / John Hamer / Daniel Eiszele	Division/Group			
Lead READ	Elliot Meyer	Division/Group			
Documentation Unit	RIST (Virtual)	Division/Group			
Demobilization Unit	Brian Talbott	Division/Group			
GISS	Matthew Eister / Erin Opliger / Travis Coughlin / Chris Barrett	<b>Air Operations Branch</b>	<b>Director:</b>	<b>Staci Dickson</b>	
FBAN	Diondray Wiley / RJ Hannah(T)	Air Support Group Supervisor		Rita Clipperton / Roger Caballero (T)	
IMET	Bob Hoenisch	Air Tactical Group Supervisor		Jay Walter	
Air Resource Advisor	Margaret Key / Paul Corrigan				
Training Tech Spec	Emil Picchi (Virtual)				
ITSS	James Whiteside / Darren Howard / Gabe Marquez				
SCKN	Matthew Valley / Ben Turcea(T)				
<b>6. Logistics Section</b>					
Chief	Cheryl Raines / Jennifer Wells(T)				
Supply Unit	Jennifer Armstrong	<b>8. Finance/Administration Section:</b>			
Facilities Unit	Martie Hale / Adam Briggs(T)	Chief	Judy Reynolds / Vicki Wilson		
Ground Support Unit	Jeff Burch	Time Unit	Sheila Miner / Theresa Rendon (Virtual)		
Communications Unit	Salvador Bonilla Jr. / Kevin Janes	Procurement Unit	Craig Ericson		
Medical Unit	Erick Williams / Jeffrey Brooks(T) / Samuel Crenshaw(T)	Comp/Claims Unit	Scott Parsons		
Food Unit	Jan Palecek	Cost Unit	Tami Monahan		
Security Manager	Kevin Arnold	EQTR	Loni Holt / Evelyn Trujillo (Virtual)		
RCDM	Aron Levin / DeQuincy Gordon(T)				
<b>Prepared By: Name:</b>	Ryan Da Rosa	Position/Title:	RESL(T)	Signature: _____	
<b>ICS 203</b>		Date/Time:	8/19/2023 2300 hours		



# Ridge/Doris Point Fire Weather Forecast



**FORECAST NO:** 12  
**PREDICTION FOR:** Sunday  
**SHIFT DATE:** 08/20/23  
**FORECAST ISSUED:** 08/19/23 at 2000 MDT

**NAMES OF FIRES:** Ridge, Doris Point  
**UNIT:** MT-Flathead National Forest  
**SIGNED:** Bob Hoenisch - Incident Meteorologist  
text/email obs: [406-899-4112/robert.hoenisch@noaa.gov](mailto:406-899-4112/robert.hoenisch@noaa.gov)

**WEATHER DISCUSSION:** Moisture spreading north into the region will bring increasing clouds with showers likely to develop by late this afternoon. A few thunderstorms are possible with the initial surge of moisture late this afternoon and evening, which may be accompanied by gusty and erratic winds. Otherwise, general winds over ridgetops will continue from the east with a few gusts to around 15 mph, while light and variable winds prevail on mid to lower slopes. A period of wetting rain is likely tonight as moisture continues to push north and northeast into the region.

## TODAY:

**SKY/WEATHER:** Mostly cloudy. Chance of showers and isolated thunderstorms, mainly after 1600.

**Max Temperature:** 75-80 lower elevations (below 4500 ft) and 69-74 mid-slopes to ridges.

**Min RH:** 26-31% lower elevations (below 4500 ft) and 32-37% mid-slopes to ridges

**20 ft WINDS:** **Slope/Valley** – Becoming light up-slope/up-drainage up to 6 mph by 1200.

**Ridgetop** – East 5-10 mph with gusts to around 18 mph.

**LAL:** 2                      **Chance of Wetting Rain (0.10”):** 10%                      **HAINES INDEX:** 3 (Very Low)

## TONIGHT:

**SKY/WEATHER:** Cloudy. Showers likely with a few isolated evening thunderstorms.

**Min Temperature:** 52-57.

**Max RH:** Greater than 75%.

**20 ft WINDS:** **Slope/Valley** – East to Northeast winds 4 to 9 mph.

**Ridgetop** – East winds 5-10 mph with gusts to 15 mph.

**LAL:** 2                      **Chance of Wetting Rain (0.10”):** 60%

## Outlook for MONDAY:

**SKY/WEATHER:** Cloudy with rain likely.

**Max Temperature:** 70-75 lower elevations (below 4500 ft) and 64-69 mid-slopes to ridges.

**Min RH:** 43-48% lower elevations (below 4500 ft) and 48-53% mid-slopes to ridges

**20 ft WINDS:** **Slope/Valley** – East up to 7 mph.

**Ridgetop** – East 5-10 mph with gusts to around 15 mph.

**Extended Forecast Discussion:** Deeper moisture associated with the remnants of Hurricane Hilary is projected to lift north across the Northern Rockies on Monday, bringing a widespread rain. The exact track of embedded heavier precipitation is still evolving but additional precipitation amounts of 0.25” or more are likely (70% chance) with a 40-50% probability of receiving precipitation amounts of 0.50” or more.

8/19/2023 observations thru 2000	Min Temp	Max RH	Max Temp	Min RH	Peak Wind	Precipitation
<b>Spotted Bear Lookout (7202')</b>	58	64%	69	30%	SW 37 mph	0.00”
<b>IRAWS46-Desert Mtn (6360')</b>	58	65%	76	28%	SW 32 mph	0.02”
<b>IRAWS45-Firefighter Mtn (5683')</b>	60	65%	75	26%	SW 41 mph	0.02”
<b>Spotted Bear RS (3725')</b>	56	86%	84	26%	S 19 mph	0.03”
<b>West Glacier RAWs (3165')</b>	65	81%	90	22%	W 23 mph	0.00”
<b>Hungry Horse RAWs (3123')</b>	75	46%	89	18%	SW 27 mph	0.01”

## FIRE BEHAVIOR FORECAST

<b>FORECAST NUMBER:</b> 12	<b>TYPE OF FIRE</b> Wildfire
<b>FIRE NAME:</b> Ridge	<b>OPERATIONAL PERIOD</b> Sunday August 20, 2023
<b>DATE ISSUED</b> Saturday August 19, 2023	<b>TIME ISSUED</b> 2100
<b>UNIT</b> MT-Flathead National Forest	<b>SIGNED</b> Diondray Wiley Fire Behavior Analyst (FBAN)

### INPUTS

#### WEATHER SUMMARY

**WEATHER** Mostly cloudy. Chance of showers and isolated thunderstorms after 1600

**MAX TEMP:** 75-80 lower elevations (below 4500 ft) and 69-74 mid-slopes to ridges

**Humidity:** 26-31% lower elevations (below 4500 ft) and 32-37% mid-slopes to ridges

**20 FOOT WINDS: Valleys/Lower Slope:** Becoming light up-slope/up-drainage up to 6 mph by 1200.

**Ridge/Upper slope:** East 5-10 mph with gusts to around 18 mph.

**Haines 3 (Very Low) LAL 2**

**FUELS:** The major fuel types, found in and around the fire area include compact timber stands, timber Understory, brush and heavy down and dead.

**Ignition Receptiveness: ERC:** 45 above the 97<sup>th</sup> percentile. **Burn Index:** 33 above the 90<sup>th</sup> percentile.

**Probability of Ignition:** 54-57% **Spotting distance:** Ridge top timber .1-mile, brush .2-mile

**Dryness:** Dead and down fuel moistures: **1 hour** – 6% **10 hour**-10 %, **100 hour** -11%, **1000 hour**-14%.

### FIRE BEHAVIOR

Forecasted weather conditions (possible showers) will decrease fire activity. Fuels remain dry and receptive. Clear air will intensify fire behavior. The potential for moderate to active fire behavior continues to exist (single tree torching, surface fire, limited spotting) where there's open line. A North wind is forecasted for today's shift. Be mindful of how your work location may be affected by the new wind orientation.

#### SPECIFIC FIRE BEHAVIOR:

**Division A:** Minimal fire activity, interior smoldering and creeping. Potential for flare-up on the North end. Control lines in the south will be tested.

**Division M:** Moderate fire behavior, interior smoldering and creeping. Potential for flare-ups, roll-out and spotting.

**Division R:** Moderate fire behavior, interior smoldering and creeping. Anticipate flare-ups, backing and spotting where open line exist. Control lines on the spur ridge will be wind tested.

**Division W:** Moderate fire behavior, interior smoldering and creeping. Potential for roll-out and flare-ups near control lines.

**Division DD: Doris Fire,** Active fire behavior, torching, surface fire, interior smoldering and creeping. The West flank will continue to move towards the summit with alignment (North wind, fuel and slope driven), flanking along Doris Creek (North) with slope reversal and potential to spot into Beta Lake (fuel and slope alignment). North winds may channel through Doris and Lost Johnny Creek. Slope reversal from Lost Johnny Creek toward Jimmie Ridge. The East flank will continue to back toward the reservoir..

#### Aviation Safety/ Watchout:

How might you use helicopter drops to knock down or secure a fire area that poses a direct threat to escaping control lines or climbing ladder fuels?

#### Safety Message/ Watch Out Situations:

Limited visibility may give you a false sense of security.  
Use LCES to ensure you know what the fires are doing around you.

# ASSIGNMENT LIST (ICS 204 WF)

CONTROLLED UNCLASSIFIED  
INFORMATION//BASIC

<b>1. Incident Name:</b>		<b>2. Operational Period:</b>				<b>3. Branch</b>		<b>Division</b>		
<b>RIDGE / DORIS POINT / TIN SOLDIER</b>		Date From: 08/20/23		Date To: 08/20/23		<b>A</b>		<b>Alpha</b>		
		Time From: 0600		Time To: 1800						
<b>4. Operations Personnel:</b>						<b>Page 1 of 1</b>				
Operations Section Chief: <b>David Pereira / Kyle Jacobson / Drew Graham / Kerri Williamson(T)</b>				Night Ops:						
Branch Director:				Branch Safety:						
Division/Group Supervisor: <b>Ryan Regelin</b>				Air Attack: <b>Jay Walter</b>						
<b>5. Resources Assigned:</b>		<b>** Resources Below in Bold are 12 Hour **</b>								
Resource Identifier	INC	LWD	Leader	Personnel	Request #	Hours	Reporting Location			
<b>CRW2IA TETON IHC</b>	<b>RID</b>	<b>8/21</b>	<b>KULLA, TYLER</b>	<b>22</b>	<b>C-8</b>	<b>0600-1800</b>	<b>RIVER RANCH ICP</b>			
<b>CRW2IA KEYSTONE</b>	<b>RID</b>	<b>8/20</b>	<b>NOVITSKY, JACOB</b>	<b>21</b>	<b>C-7</b>	<b>0600-1800</b>	<b>RIVER RANCH ICP</b>			
<b>CRW2 WEST COAST 32</b>	<b>RID</b>	<b>8/30</b>	<b>MARTINEZ, BENJAMIN</b>	<b>18</b>	<b>C-32</b>	<b>0600-1800</b>	<b>RIVER RANCH ICP</b>			
<b>ENG3 AAA FORESTRY</b>	<b>RID</b>	<b>8/25</b>	<b>MIX-CATRON, JEFF</b>	<b>3</b>	<b>E-112</b>	<b>0600-1800</b>	<b>RIVER RANCH ICP</b>			
<b>ENG3 LL MEADOW WILDFIRE</b>	<b>RID</b>	<b>8/25</b>	<b>GRACIE, REED</b>	<b>3</b>	<b>E-109</b>	<b>0600-1800</b>	<b>RIVER RANCH ICP</b>			
<b>ENG3 SOLOMON</b>	<b>RID</b>	<b>8/23</b>	<b>SOLOMON, TODD</b>	<b>3</b>	<b>E-97</b>	<b>0600-1800</b>	<b>RIVER RANCH ICP</b>			
<b>ENG6 MOMTF E611</b>	<b>RID</b>	<b>8/20</b>	<b>CORTES, BRANDON</b>	<b>3</b>	<b>E-120</b>	<b>0600-1800</b>	<b>RIVER RANCH ICP</b>			
<b>WTT2 WEBER FD</b>	<b>RID</b>	<b>8/20</b>	<b>SEXTON, THOMAS</b>	<b>2</b>	<b>E-56</b>	<b>0600-1800</b>	<b>RIVER RANCH ICP</b>			
<b>WTS2 MARTIN CITY</b>	<b>RID</b>	<b>8/24</b>	<b>TORPIN, TOM</b>	<b>2</b>	<b>E-61</b>	<b>0600-1800</b>	<b>RIVER RANCH ICP</b>			
<b>SKG3 SCHLEGEL</b>	<b>RID</b>	<b>8/29</b>	<b>HUNT, NATHAN</b>	<b>2</b>	<b>E-89</b>	<b>0600-1800</b>	<b>RIVER RANCH ICP</b>			
<b>TFLD(T) RABLIN</b>	<b>RID</b>	<b>8/25</b>	<b>RABLIN, EDWARD</b>	<b>1</b>	<b>O-101</b>	<b>0600-1800</b>	<b>RIVER RANCH ICP</b>			
<b>EMPF SMITH</b>	<b>RID</b>	<b>9/3</b>	<b>SMITH, ROBERT</b>	<b>1</b>	<b>O-110</b>	<b>0600-1800</b>	<b>RIVER RANCH ICP</b>			
<b>EMTF FURRH</b>	<b>RID</b>	<b>9/2</b>	<b>FURRH, CALEB</b>	<b>1</b>	<b>O-113</b>	<b>0600-1800</b>	<b>RIVER RANCH ICP</b>			
<b>EMPF FOX</b>	<b>RID</b>	<b>9/2</b>	<b>FOX, JAMES</b>	<b>1</b>	<b>O-109</b>	<b>0600-1800</b>	<b>RIVER RANCH ICP</b>			
<b>EMTF PRUNIER</b>	<b>RID</b>	<b>9/3</b>	<b>PRUNIER, ASHLEY</b>	<b>1</b>	<b>O-114</b>	<b>0600-1800</b>	<b>RIVER RANCH ICP</b>			
<b>AMB1 KALISPELL</b>	<b>RID</b>	<b>8/25</b>	<b>KINZER, JESSICA</b>	<b>2</b>	<b>E-114</b>	<b>0600-1800</b>	<b>RIVER RANCH ICP</b>			
<b>6. Work Assignments:</b>										
Mop-up and secure control lines to the extent necessary to keep the fire in its current footprint.										
<b>7. Special Instructions:</b>										
Before doing work in the Coram Experimental Forest, coordinate with REAF Elliot Meyer (406)897-0794.										
FOBS may be conducting work in division and will check in with DIVS prior to conducting work.										
REAFs will be working throughout all divisions. REAFs and READs will contact DIVS when they enter and exit divisions.										
SOFR Martin will be working in divisions A and W. SOFR Martin will contact DIVS when entering and exiting divisions.										
<b>8. Communications</b>										
Name	Ch	Function	Rx Freq	Rx Tone	Tx Freq	Tx Tone	Mode	Notes		
NIFC C3	1	COMMAND	170.4250	0.0	168.0750	(T3) 131.8	A	COMMAND TO ICP		
TAC 4	4	TACTICAL	168.0500	(T3) 131.8	168.0500	(T3) 131.8	A			
A/G PRI	13	A/G PRI	173.8375	0.0	173.8375	(T2) 123.0	A	AIR TO GROUND PRIMARY		
TAN	15	MEDICAL A/G	155.3400	0.0	155.3400	(T6) 156.7	A			
AIRGUARD	16	AIRGUARD	168.6250	0.0	168.6250	(T1) 110.9	A			
<b>9. Prepared by: Name:</b>		Sergio Arjonilla / Ryan Da Rosa(T) / Jeff Oliver(T) / Dwayne Preston(T)				RESL		Signature: _____		
<b>ICS 204</b>		Date/Time: 8/19/2023 2200				Personnel Count: 86				

NIMSIAF

CONTROLLED UNCLASSIFIED INFORMATION//BASIC

# ASSIGNMENT LIST (ICS 204 WF)

CONTROLLED UNCLASSIFIED  
INFORMATION//BASIC

<b>1. Incident Name:</b> <b>RIDGE / DORIS POINT / TIN SOLDIER</b>	<b>2. Operational Period:</b> Date From: 08/20/23    Date To: 08/20/23 Time From: 0600    Time To: 1800	<b>3. Branch</b> <b>Division</b>  <b>M</b>
--	---	--

<b>4. Operations Personnel:</b>	<b>Page 1 of 1</b> <b>Mike</b>
---------------------------------	--------------------------------

Operations Section Chief: <b>David Pereira / Kyle Jacobson / Drew Graham / Kerri Williamson(T)</b>	Night Ops:
Branch Director:	Branch Safety:
Division/Group Supervisor: <b>Ryan Regelin / Nathan Basford(T)</b>	Air Attack: <b>Jay Walter</b>

5. Resources Assigned:		** Resources Below in Bold are 12 Hour **					
Resource Identifier	INC	LWD	Leader	Personnel	Request #	Hours	Reporting Location
CRW2 IRON MOUNTAIN 6	RID	8/29	<b>SANTANA, ISRAEL</b>	<b>20</b>	<b>C-19</b>	<b>0600-1800</b>	<b>RIVER RANCH ICP</b>
CRW2 MARLETTE PEAK	RID	8/27	<b>FOSTER, JASON</b>	<b>23</b>	<b>C-9</b>	<b>0600-1800</b>	<b>RIVER RANCH ICP</b>
CRW2 R&R CONTRACTING	RID	8/30	<b>ROCHA, CRISTOBAL</b>	<b>20</b>	<b>C-30</b>	<b>0600-1800</b>	<b>RIVER RANCH ICP</b>
ENG3 MISSOULA CITY	RID	8/25	<b>WILLIAMS, JEREMY</b>	<b>3</b>	<b>E-96</b>	<b>0600-1800</b>	<b>RIVER RANCH ICP</b>
*ENG4 MT-FNF-E462	RID		<b>BARCLAY</b>	<b>3</b>		<b>0600-1800</b>	<b>RIVER RANCH ICP</b>
*ENG6 MT-FNF-E671	RID		<b>SIROIS</b>	<b>3</b>		<b>0600-1800</b>	<b>RIVER RANCH ICP</b>
ENG6 EAST MISSOULA	RID	8/25	<b>FERGUSON, TANNER</b>	<b>2</b>	<b>E-94</b>	<b>0600-1800</b>	<b>RIVER RANCH ICP</b>
ENG6 DENNISON LOGGING	RID	8/20	<b>DENNISON, CURTIS</b>	<b>2</b>	<b>E-42</b>	<b>0600-1800</b>	<b>RIVER RANCH ICP</b>
WTS2 R2K ENTERPRISES	RID	8/31	<b>BIRD, HIRAM</b>	<b>1</b>	<b>E-26</b>	<b>0600-1800</b>	<b>RIVER RANCH ICP</b>
EMPF SOWELL	RID	8/27	<b>SOWELL, MICHAEL</b>	<b>1</b>	<b>O-111</b>	<b>0600-1800</b>	<b>RIVER RANCH ICP</b>
EMTF KNOPP	RID	9/2	<b>KNOPP, BRADLEY</b>	<b>1</b>	<b>O-115</b>	<b>0600-1800</b>	<b>RIVER RANCH ICP</b>

**6. Work Assignments:**  
Mop-up and secure control lines to the extent necessary to keep the fire in its current footprint.

**7. Special Instructions:**  
Before doing work in the Coram Experimental Forest, coordinate with REAF Elliot Meyer (406)897-0794.  
\*Denotes local resources on loan to the incident.  
FOBS may be conducting work in division and will check in with DIVS prior to conducting work.  
REAFs will be working throughout all divisions. REAFs and READs will contact DIVS when they enter and exit divisions.  
SOFR Maguire will be working in divisions M and R. SOFR Maguire will contact DIVS when entering and exiting divisions.

**8. Communications**

Name	Ch	Function	Rx Freq	Rx Tone	Tx Freq	Tx Tone	Mode	Notes
NIFC C3	1	COMMAND	170.4250	0.0	168.0750	(T3) 131.8	A	COMMAND TO ICP
TAC 6	6	TACTICAL	168.6000	(T3) 131.8	168.6000	(T3) 131.8	A	
A/G PRI	13	A/G PRI	173.8375	0.0	173.8375	(T2) 123.0	A	AIR TO GROUND PRIMARY
TAN	15	MEDICAL A/G	155.3400	0.0	155.3400	(T6) 156.7	A	
AIRGUARD	16	AIRGUARD	168.6250	0.0	168.6250	(T1) 110.9	A	

**9. Prepared by: Name:** Sergio Arjonilla / Ryan Da Rosa(T) / Jeff Oliver(T) / Dwayne Preston(T)    RESL    Signature: \_\_\_\_\_

**ICS 204**    Date/Time: 8/19/2023 2200    Personnel Count: 79



# ASSIGNMENT LIST (ICS 204 WF)

CONTROLLED UNCLASSIFIED  
INFORMATION/BASIC

<b>1. Incident Name:</b>	<b>2. Operational Period:</b>	<b>3. Branch</b>	<b>Division</b>
<b>RIDGE / DORIS POINT / TIN SOLDIER</b>	Date From: 08/20/23      Date To: 08/20/23 Time From: 0600              Time To: 1800	<b>R</b>	

**4. Operations Personnel:** Page 1 of 2      **Romeo**

Operations Section Chief: <b>David Pereira / Kyle Jacobson / Drew Graham / Kerri Williamson(T)</b> Branch Director: _____ Division/Group Supervisor: <b>Grahm Rice / Jace Schekla(T)</b>	Night Ops: _____ Branch Safety: _____ Air Attack: <b>Jay Walter</b>
--	---

**5. Resources Assigned:** \*\* Resources Below in Bold are 12 Hour \*\*

Resource Identifier	INC	LWD	Leader	Personnel	Request #	Hours	Reporting Location
<b>CRW1 PLUMAS IHC</b>	RID	8/20	<b>SHERMAN, MIKE</b>	<b>19</b>	<b>C-10</b>	<b>0600-1800</b>	<b>RIVER RANCH ICP</b>
<b>CRW1 LEWIS &amp; CLARK IHC</b>	RID	8/24	<b>WYDRA, NICHOLAS</b>	<b>22</b>	<b>C-14</b>	<b>0600-1800</b>	<b>RIVER RANCH ICP</b>
<b>CRW1 ALTA IHC</b>	RID	8/21	<b>BOGDANOFF, BRYAN</b>	<b>22</b>	<b>C-11</b>	<b>0600-1800</b>	<b>RIVER RANCH ICP</b>
<b>CRW2 WEST COAST 31</b>	RID	8/30	<b>OLMOS, JULIO</b>	<b>20</b>	<b>C-31</b>	<b>0600-1800</b>	<b>RIVER RANCH ICP</b>
<b>CRW2 PNW FIRE</b>	RID	8/28	<b>ESQUIBEL, MIGUEL</b>	<b>20</b>	<b>C-20</b>	<b>0600-0600</b>	<b>RIVER RANCH ICP</b>
<b>ENG3 CASTLE MOUNTAIN</b>	RID	8/25	<b>TILLER, JOHN</b>	<b>3</b>	<b>E-111</b>	<b>0600-1800</b>	<b>RIVER RANCH ICP</b>
<b>ENG3 SHERIDAN</b>	RID	8/25	<b>SHERIDAN, BOB</b>	<b>4</b>	<b>E-110</b>	<b>0600-1800</b>	<b>RIVER RANCH ICP</b>
<b>WTS2 WALKING Y4</b>	RID	8/31	<b>HELSEY, AL</b>	<b>1</b>	<b>E-27</b>	<b>0600-1800</b>	<b>RIVER RANCH ICP</b>
<b>WTS2 ROCKY MOUNTAIN</b>	RID	8/19	<b>LODGE, CRAIG</b>	<b>1</b>	<b>E-63</b>	<b>0600-1800</b>	<b>RIVER RANCH ICP</b>
<b>DOZ2 CATCH INC</b>	RID	8/24	<b>ONEIL, Jr., DAN</b>	<b>2</b>	<b>E-108</b>	<b>0600-1800</b>	<b>RIVER RANCH ICP</b>
<b>DOZ3 YEAGER</b>	RID	8/22	<b>YEAGER, DOUG</b>	<b>2</b>	<b>E-91</b>	<b>0600-1800</b>	<b>RIVER RANCH ICP</b>
<b>SKG3 ROCKY MOUNTAIN</b>	RID	9/6	<b>BEITO, GILMAN</b>	<b>2</b>	<b>E-67</b>	<b>0600-1800</b>	<b>RIVER RANCH ICP</b>
<b>MAST2 J3 CONTRACTING</b>	RID	9/6	<b>GRANT, WILLIAM</b>	<b>2</b>	<b>E-84</b>	<b>0600-1800</b>	<b>RIVER RANCH ICP</b>
<b>FEL1 TAMARACK</b>	RID	9/1	<b>GEORGE, SHELBY</b>	<b>1</b>	<b>E-21</b>	<b>0600-1800</b>	<b>RIVER RANCH ICP</b>
<b>SKD1 TAMARACK TIMBER</b>	RID	8/27	<b>GEORGE, SHELBY</b>	<b>2</b>	<b>E-126</b>	<b>0600-1800</b>	<b>RIVER RANCH ICP</b>
<b>HET F SIDERIUS</b>	RID		<b>SIDERIUS, DAN</b>	<b>7</b>	<b>E-2</b>	<b>0600-1800</b>	<b>RIVER RANCH ICP</b>
<b>LOGL SLACK</b>	RID		<b>SLACK, JAMIE</b>	<b>1</b>	<b>E-34</b>	<b>0600-1800</b>	<b>RIVER RANCH ICP</b>
<b>LOGL SIDERIUS</b>	RID		<b>CLOUSE, BRANDON</b>	<b>1</b>	<b>E-35</b>	<b>0600-1800</b>	<b>RIVER RANCH ICP</b>

**6. Work Assignments:**  
 Scout and plan for direct/indirect control lines.  
 Install control lines where appropriate to prevent fire spread to the North and East.

**7. Special Instructions:**  
 Before doing work in the Coram Experimental Forest, coordinate with REAF Elliot Meyer (406)897-0794.  
 FOBS may be conducting work in division and will check in with DIVS prior to conducting work.  
 REAFs will be working throughout all divisions. REAFs and READs will contact DIVS when they enter and exit divisions.  
 SOFR Maguire will be working in divisions M and R. SOFR Maguire will contact DIVS when entering and exiting divisions.

**8. Communications**

Name	Ch	Function	Rx Freq	Rx Tone	Tx Freq	Tx Tone	Mode	Notes
NIFC C3	1	COMMAND	170.4250	0.0	168.0750	(T3) 131.8	A	COMMAND TO ICP
TAC 7	7	TACTICAL	166.7250	(T3) 131.8	166.7250	(T3) 131.8	A	
A/G PRI	13	A/G PRI	173.8375	0.0	173.8375	(T2) 123.0	A	AIR TO GROUND PRIMARY
TAN	15	MEDICAL A/G	155.3400	0.0	155.3400	(T6) 156.7	A	
AIRGUARD	16	AIRGUARD	168.6250	0.0	168.6250	(T1) 110.9	A	

**9. Prepared by: Name:** Sergio Arjonilla / Ryan Da Rosa(T) / Jeff Oliver(T) / Dwayne Preston(T)      RESL      Signature: \_\_\_\_\_

**ICS 204**      Date/Time: 8/19/2023 2200      Personnel Count: 132

# ASSIGNMENT LIST (ICS 204 WF)

CONTROLLED UNCLASSIFIED  
INFORMATION//BASIC

<b>1. Incident Name:</b>	<b>2. Operational Period:</b>	<b>3. Branch</b>	<b>Division</b>
<b>RIDGE / DORIS POINT / TIN SOLDIER</b>	Date From: 08/20/23      Date To: 08/20/23 Time From: 0600              Time To: 1800		<b>R</b>
<b>4. Operations Personnel:</b>		Page 2 of 2	Romeo

Operations Section Chief: <b>David Pereira / Kyle Jacobson / Drew Graham / Kerri Williamson(T)</b> Branch Director: Division/Group Supervisor: <b>Grahm Rice / Jace Schekla(T)</b>	Night Ops: Branch Safety: Air Attack: <b>Jay Walter</b>
--	---

5. Resources Assigned:		** Resources Below in Bold are 12 Hour **					
Resource Identifier	INC	LWD	Leader	Personnel	Request #	Hours	Reporting Location
<b>LOGT MATHENY LINE</b>	RID	8/30	<b>MATHENY, TIMOTHY</b>	1	E-132	0600-1800	<b>RIVER RANCH ICP</b>
<b>LOGT RONKOSKI TRUCKING</b>	RID	8/30	<b>KOSKI, RON</b>	1	E-133	0600-1800	<b>RIVER RANCH ICP</b>
<b>TFLD MECHAM</b>	RID	8/27	<b>MECHAM, BODE</b>	1	O-138	0600-1800	<b>RIVER RANCH ICP</b>
<b>TFLD(T) ZIMMER</b>	RID	9/1	<b>ZIMMER, PATRICK</b>	1	O-185	0600-1800	<b>RIVER RANCH ICP</b>
<b>HEQB KNAPP</b>	RID	8/28	<b>KNAPP, KYLER</b>	1	O-190	0600-1800	<b>RIVER RANCH ICP</b>
<b>HEQB CZYSCON</b>	RID	9/1	<b>CZYSCON, DREW A</b>	1	O-187	0600-1800	<b>RIVER RANCH ICP</b>
<b>HEQB EMERSON</b>	RID	9/2	<b>EMERSON, ZACH</b>	1	O-188	0600-1800	<b>RIVER RANCH ICP</b>
<b>EMPF RAHM</b>	RID	9/2	<b>RAHM, AYALA</b>	1	O-208	0600-1800	<b>RIVER RANCH ICP</b>
<b>EMPF ROTELLA</b>	RID	9/2	<b>ROTELLA, STEPHEN</b>	1	O-211	0600-1800	<b>RIVER RANCH ICP</b>
<b>EMTF OLSEN</b>	RID	9/2	<b>OLSEN, CHRIS</b>	1	O-210	0600-1800	<b>RIVER RANCH ICP</b>
<b>MEDV UTV MEDICS 1</b>	RID	8/28	<b>SPEARS, JUSTIN</b>	2	O-63	0600-1800	<b>RIVER RANCH ICP</b>

**6. Work Assignments:**  
 Scout and plan for direct/indirect control lines.  
 Install control lines where appropriate to prevent fire spread to the North and East.

**7. Special Instructions:**  
 Before doing work in the Coram Experimental Forest, coordinate with REAF Elliot Meyer (406)897-0794.  
 FOBS may be conducting work in division and will check in with DIVS prior to conducting work.  
 REAFs will be working throughout all divisions. REAFs and READs will contact DIVS when they enter and exit divisions.  
 SOFR Maguire will be working in divisions M and R. SOFR Maguire will contact DIVS when entering and exiting divisions.

**8. Communications**

Name	Ch	Function	Rx Freq	Rx Tone	Tx Freq	Tx Tone	Mode	Notes
NIFC C3	1	COMMAND	170.4250	0.0	168.0750	(T3) 131.8	A	COMMAND TO ICP
TAC 7	7	TACTICAL	166.7250	(T3) 131.8	166.7250	(T3) 131.8	A	
A/G PRI	13	A/G PRI	173.8375	0.0	173.8375	(T2) 123.0	A	AIR TO GROUND PRIMARY
TAN	15	MEDICAL A/G	155.3400	0.0	155.3400	(T6) 156.7	A	
AIRGUARD	16	AIRGUARD	168.6250	0.0	168.6250	(T1) 110.9	A	

**9. Prepared by: Name:** Sergio Arjonilla / Ryan Da Rosa(T) / Jeff Oliver(T) / Dwayne Preston(T)      RESL  
 Signature: \_\_\_\_\_

ICS 204      Date/Time: 8/19/2023 2200      Personnel Count: 12

# ASSIGNMENT LIST (ICS 204 WF)

CONTROLLED UNCLASSIFIED  
INFORMATION/BASIC

<b>1. Incident Name:</b>		<b>2. Operational Period:</b>				<b>3. Branch</b>		<b>Division</b>	
<b>RIDGE / DORIS POINT / TIN SOLDIER</b>		Date From: 08/20/23		Date To: 08/20/23		<b>W</b>		<b>Whiskey</b>	
		Time From: 0600		Time To: 1800					
<b>4. Operations Personnel:</b>						<b>Page 1 of 2</b>			
Operations Section Chief: <b>David Pereira / Kyle Jacobson / Drew Graham / Kerri Williamson(T)</b>				Night Ops:					
Branch Director:				Branch Safety:					
Division/Group Supervisor: <b>Dave Soldavini / Ron Brewer(T)</b>				Air Attack: <b>Jay Walter</b>					
<b>5. Resources Assigned:</b>		<b>** Resources Below in Bold are 12 Hour **</b>							
Resource Identifier	INC	LWD	Leader	Personnel	Request #	Hours	Reporting Location		
<b>CRW1 TATANKA IHC</b>	RID	<b>8/30</b>	<b>ZORTMAN, DAVID</b>	<b>18</b>	<b>C-26</b>	<b>0600-1800</b>	<b>RIVER RANCH ICP</b>		
<b>CRW1 LOLO IHC</b>	RID	<b>8/28</b>	<b>FAIELLA, SHAWN M</b>	<b>24</b>	<b>C-22</b>	<b>0600-1800</b>	<b>RIVER RANCH ICP</b>		
<b>CRW1 SMITH RIVER IHC</b>	RID	<b>8/24</b>	<b>DENLINGER, DOUGLAS</b>	<b>21</b>	<b>C-15</b>	<b>0600-1800</b>	<b>RIVER RANCH ICP</b>		
<b>CRW2IA MIDEWIN</b>	RID	<b>8/25</b>	<b>HOFFMAN, JERRY</b>	<b>19</b>	<b>C-16</b>	<b>0600-1800</b>	<b>RIVER RANCH ICP</b>		
<b>CRW2IA PATRICK 17</b>	RID	<b>8/21</b>	<b>BEARD, BENJAMIN</b>	<b>20</b>	<b>C-17</b>	<b>0600-0600</b>	<b>RIVER RANCH ICP</b>		
<b>CRW2 IRON MOUNTAIN 18</b>	RID	<b>8/29</b>	<b>CHIPREZ, JESSE</b>	<b>20</b>	<b>C-18</b>	<b>0600-1800</b>	<b>RIVER RANCH ICP</b>		
<b>CRW2 WEST COAST 32</b>	RID	<b>8/30</b>	<b>MARTINEZ, BENJAMIN</b>	<b>18</b>	<b>C-32</b>	<b>0600-1800</b>	<b>RIVER RANCH ICP</b>		
<b>ENG6 BIGFORK 382</b>	RID	<b>8/28</b>	<b>REFFNER, SEAN</b>	<b>4</b>	<b>E-60</b>	<b>0600-1800</b>	<b>RIVER RANCH ICP</b>		
<b>ENG6 BRENTESON RANCH</b>	RID	<b>8/23</b>	<b>RIPHENBURG, SHAUN</b>	<b>3</b>	<b>E-95</b>	<b>0600-1800</b>	<b>RIVER RANCH ICP</b>		
<b>WTT1 CEDAR CITY</b>	RID	<b>8/29</b>	<b>SMITH, JORDAN</b>	<b>2</b>	<b>E-123</b>	<b>0600-1800</b>	<b>RIVER RANCH ICP</b>		
<b>WTT1 MOAPA VALLEY</b>	RID	<b>8/31</b>	<b>HASKELL, ALAN</b>	<b>2</b>	<b>E-131</b>	<b>0600-1800</b>	<b>RIVER RANCH ICP</b>		
<b>WTT1 MADISON FD</b>	RID	<b>8/28</b>	<b>JAMESON, ETHAN</b>	<b>1</b>	<b>E-122</b>	<b>0600-1800</b>	<b>RIVER RANCH ICP</b>		
<b>WTT2 UCON FD</b>	RID	<b>8/23</b>	<b>NORMAN, KENDALL</b>	<b>2</b>	<b>E-99</b>	<b>0600-1800</b>	<b>RIVER RANCH ICP</b>		
<b>DOZ2 SIKES Logging</b>	RID	<b>8/24</b>	<b>SIKES, GREGORY</b>	<b>2</b>	<b>E-107</b>	<b>0600-1800</b>	<b>RIVER RANCH ICP</b>		
<b>SKG2 DENNISON</b>	RID	<b>8/23</b>	<b>DENNISON, LARRIK</b>	<b>2</b>	<b>E-90</b>	<b>0600-1800</b>	<b>RIVER RANCH ICP</b>		
<b>HEQB JENKINS</b>	RID	<b>8/26</b>	<b>JENKINS, ANDREW W</b>	<b>1</b>	<b>O-141</b>	<b>0600-1800</b>	<b>RIVER RANCH ICP</b>		
<b>HEQB(T) ROVA</b>	RID	<b>8/26</b>	<b>ROVA, LEIF</b>	<b>1</b>	<b>O-152</b>	<b>0600-1800</b>	<b>RIVER RANCH ICP</b>		
<b>EMPF SCHMIDT</b>	RID	<b>8/31</b>	<b>SCHMIDT, RODNEY</b>	<b>1</b>	<b>O-96</b>	<b>0600-1800</b>	<b>RIVER RANCH ICP</b>		
<b>6. Work Assignments:</b>									
Scout and construct direct/indirect control lines.									
Install control lines where appropriate to prevent fire spread to the South and East.									
<b>7. Special Instructions:</b>									
Before doing work in the Coram Experimental Forest, coordinate with REAF Elliot Meyer (406)897-0794.									
FOBS may be conducting work in division and will check in with DIVS prior to conducting work.									
REAFs will be working throughout all divisions. REAFs and READs will contact DIVS when they enter and exit divisions.									
SOFR Martin will be working in divisions A and W. SOFR Martin will contact DIVS when entering and exiting divisions.									
<b>8. Communications</b>									
Name	Ch	Function	Rx Freq	Rx Tone	Tx Freq	Tx Tone	Mode	Notes	
NIFC C3	1	COMMAND	170.4250	0.0	168.0750	(T3) 131.8	A	COMMAND TO ICP	
TAC 8	8	TACTICAL	166.7750	(T3) 131.8	166.7750	(T3) 131.8	A		
A/G PRI	13	A/G PRI	173.8375	0.0	173.8375	(T2) 123.0	A	AIR TO GROUND PRIMARY	
TAN	15	MEDICAL A/G	155.3400	0.0	155.3400	(T6) 156.7	A		
AIRGUARD	16	AIRGUARD	168.6250	0.0	168.6250	(T1) 110.9	A		
<b>9. Prepared by: Name:</b>									
Sergio Arjonilla / Ryan Da Rosa(T) /				RESL					
Jeff Oliver(T) / Dwayne Preston(T)				Signature: _____					
<b>ICS 204</b>		Date/Time: 8/19/2023 2200				Personnel Count: 161			

## ASSIGNMENT LIST (ICS 204 WF)

CONTROLLED UNCLASSIFIED  
INFORMATION//BASIC

<b>1. Incident Name:</b>	<b>2. Operational Period:</b>	<b>3. Branch</b>	<b>Division</b>
<b>RIDGE / DORIS POINT / TIN SOLDIER</b>	Date From: 08/20/23     Date To: 08/20/23 Time From: 0600     Time To: 1800	<b>W</b>	<b>Whiskey</b>
<b>4. Operations Personnel:</b>		Page 2 of 2	Whiskey

Operations Section Chief: <b>David Pereira / Kyle Jacobson / Drew Graham / Kerri Williamson(T)</b>	Night Ops:
Branch Director:	Branch Safety:
Division/Group Supervisor: <b>Dave Soldavini / Ron Brewer(T)</b>	Air Attack: <b>Jay Walter</b>

5. Resources Assigned:		** Resources Below in Bold are 12 Hour **					
Resource Identifier	INC	LWD	Leader	Personnel	Request #	Hours	Reporting Location
<b>EMTF GRIFFITH</b>	<b>RID</b>	<b>9/1</b>	<b>GRIFFITH, HAYDEN</b>	<b>1</b>	<b>O-116</b>	<b>0600-1800</b>	<b>RIVER RANCH ICP</b>
<b>MEDV WILDERNESS MEDICS</b>	<b>RID</b>	<b>9/6</b>	<b>OSIADACZ, ADAM</b>	<b>2</b>	<b>E-129</b>	<b>0600-1800</b>	<b>RIVER RANCH ICP</b>

**6. Work Assignments:**  
 Scout and construct direct/indirect control lines.  
 Install control lines where appropriate to prevent fire spread to the South and East.

**7. Special Instructions:**  
 Before doing work in the Coram Experimental Forest, coordinate with REAF Elliot Meyer (406)897-0794.  
 FOBS may be conducting work in division and will check in with DIVS prior to conducting work.  
 REAFs will be working throughout all divisions. REAFs and READs will contact DIVS when they enter and exit divisions.  
 SOFR Martin will be working in divisions A and W. SOFR Martin will contact DIVS when entering and exiting divisions.

**8. Communications**

Name	Ch	Function	Rx Freq	Rx Tone	Tx Freq	Tx Tone	Mode	Notes
NIFC C3	1	COMMAND	170.4250	0.0	168.0750	(T3) 131.8	A	COMMAND TO ICP
TAC 8	8	TACTICAL	166.7750	(T3) 131.8	166.7750	(T3) 131.8	A	
A/G PRI	13	A/G PRI	173.8375	0.0	173.8375	(T2) 123.0	A	AIR TO GROUND PRIMARY
TAN	15	MEDICAL A/G	155.3400	0.0	155.3400	(T6) 156.7	A	
AIRGUARD	16	AIRGUARD	168.6250	0.0	168.6250	(T1) 110.9	A	

**9. Prepared by: Name:** Sergio Arjonilla / Ryan Da Rosa(T) / Jeff Oliver(T) / Dwayne Preston(T)     RESL

Signature: \_\_\_\_\_

<b>ICS 204</b>	Date/Time: 8/19/2023 2200	Personnel Count: 3
----------------	---------------------------	--------------------

# ASSIGNMENT LIST (ICS 204 WF)

CONTROLLED UNCLASSIFIED  
INFORMATION//BASIC

<b>1. Incident Name:</b> RIDGE / DORIS POINT / TIN SOLDIER	<b>2. Operational Period:</b> Date From: 08/20/23    Date To: 08/20/23 Time From: 0600        Time To: 1800	<b>3. Branch</b> <b>Division</b>  <div style="text-align: center; font-size: 1.2em;"><b>STAGING</b></div>
<b>4. Operations Personnel:</b>		Page 1 of 1

Operations Section Chief: <b>David Pereira / Kyle Jacobson / Drew Graham / Kerri Williamson(T)</b>	Night Ops:
Branch Director:	Branch Safety:
Division/Group Supervisor:	Air Attack: <b>Jay Walter</b>

5. Resources Assigned:	** Resources Below in Bold are 12 Hour **							
Resource Identifier	INC	LWD	Leader	Personnel	Request #	Hours	Reporting Location	

**6. Work Assignments:**  
 Heavy Equipment Stage at KOA.  
 Engines and Water Tenders stage at River Ranch ICP.

**7. Special Instructions:**  
 Contact Planning OPS: Drew Graham (530) 782-0952

**8. Communications**

Name	Ch	Function	Rx Freq	Rx Tone	Tx Freq	Tx Tone	Mode	Notes
NIFC C3	1	COMMAND	170.4250	0.0	168.0750	(T3) 131.8	A	COMMAND TO ICP
TAN	15	MEDICAL A/G	155.3400	0.0	155.3400	(T6) 156.7	A	
AIRGUARD	16	AIRGUARD	168.6250	0.0	168.6250	(T1) 110.9	A	

**9. Prepared by: Name:** Sergio Arjonilla / Ryan Da Rosa(T) / Jeff Oliver(T) / Dwayne Preston(T)    RESL    Signature: \_\_\_\_\_

<b>ICS 204</b>	Date/Time: 8/19/2023 2200	Personnel Count: 0
----------------	---------------------------	--------------------

# ASSIGNMENT LIST (ICS 204 WF)

CONTROLLED UNCLASSIFIED  
INFORMATION//BASIC

<b>1. Incident Name:</b>	<b>2. Operational Period:</b>	<b>3. Branch</b>	<b>Division</b>
<b>RIDGE / DORIS POINT / TIN SOLDIER</b>	Date From: 08/20/23      Date To: 08/20/23 Time From: 0600              Time To: 1800		<b>DD</b>

**4. Operations Personnel:** Page 1 of 1      Delta-Delta

Operations Section Chief: <b>David Pereira / Kyle Jacobson / Drew Graham / Kerri Williamson(T)</b>	Night Ops:
Branch Director:	Branch Safety:
Division/Group Supervisor: <b>Guy Wilson</b>	Air Attack: <b>Jay Walter</b>

5. Resources Assigned:	** Resources Below in Bold are 12 Hour **							
Resource Identifier	INC	LWD	Leader	Personnel	Request #	Hours	Reporting Location	

**6. Work Assignments:**  
 Maintain confinement, containment, and point protection strategy in coordination with the Flathead National Forest.

**7. Special Instructions:**  
 Use screens on all pump/draft hoses in Hungry Horse Reservoir.  
 Turn WX observations to IMET.  
 Make notes in CTR's: Work performed in DIV DD

**8. Communications**

Name	Ch	Function	Rx Freq	Rx Tone	Tx Freq	Tx Tone	Mode	Notes
NIFC C3	1	COMMAND	170.4250	0.0	168.0750	(T3) 131.8	A	COMMAND TO ICP
TAC 9	9	TACTICAL	168.2500	(T3) 131.8	168.2500	(T3) 131.8	A	
A/G PRI	13	A/G PRI	173.8375	0.0	173.8375	(T2) 123.0	A	AIR TO GROUND PRIMARY
TAN	15	MEDICAL A/G	155.3400	0.0	155.3400	(T6) 156.7	A	
AIRGUARD	16	AIRGUARD	168.6250	0.0	168.6250	(T1) 110.9	A	

**9. Prepared by: Name:** Sergio Arjonilla / Ryan Da Rosa(T) / Jeff Oliver(T) / Dwayne Preston(T)      RESL

Signature: \_\_\_\_\_

**ICS 204**      Date/Time: 8/19/2023      2200      Personnel Count: 0

# ICS 205 - INCIDENT RADIO COMMUNICATIONS PLAN


**1. Incident Name:** RIDGE / DORIS POINT / TIN SOLDIER  
**Incident Channels**

**2. Date/Time Prepared** Date: 08/19/2023 Time: 1900  
**3. Operational Period:** Date From: 08/20/23 Time To: 1800

4. Communications		Assigned To	Rx Freq	Rx Tone	Tx Freq	Tx Tone	Mode	Notes
Ch#	Function	Name	Rx Freq	Rx Tone	Tx Freq	Tx Tone	Mode	Notes
1	COMMAND	NIFC C3	170.4250	0.0	168.0750	(T3) 131.8	A	COMMAND TO ICP
2	COMMAND	NIFC C6	168.4750	0.0	165.4000	(T3) 131.8	A	-
3		BLANK						
4	TACTICAL	TAC 4	168.0500	(T3) 131.8	168.0500	(T3) 131.8	A	
5	TACTICAL	TAC 5	168.2000	(T3) 131.8	168.2000	(T3) 131.8	A	
6	TACTICAL	TAC 6	168.6000	(T3) 131.8	168.6000	(T3) 131.8	A	
7	TACTICAL	TAC 7	166.7250	(T3) 131.8	166.7250	(T3) 131.8	A	
8	TACTICAL	TAC 8	166.7750	(T3) 131.8	166.7750	(T3) 131.8	A	
9	TACTICAL	TAC 9	168.2500	(T3) 131.8	168.2500	(T3) 131.8	A	
10	FOREST RPT	DESERT	173.1125	0.0	164.3750	(T10) 107.2	A	KALISPELL DISPATCH
11	MUTUAL FD TAC	RED	154.0700	0.0	154.0700	(T6) 156.7	A	LOCAL FD TACTICAL
12	ROADS	ROADS	151.5050	0.0	151.5050	(T26) 94.8	A	LOGGING TRAFFIC CONTROL
13	A/G PRI	A/G PRI	173.8375	0.0	173.8375	(T2) 123.0	A	AIR TO GROUND PRIMARY
14	A/G SEC	A/G SEC	171.8250	0.0	171.8250	0.0	A	AIR TO GROUND SECONDARY
15	MEDICAL A/G	TAN	155.3400	0.0	155.3400	(T6) 156.7	A	MEDICAL A/G
16	AIRGUARD	AIRGUARD	168.6250	0.0	168.6250	(T1) 110.9	A	EMERGENCY CONTACT
17								
18								
19								
20	AIRGUARD	AIRGUARD	168.6250	0.0	168.6250	(T1) 110.9	A	EMERGENCY CONTACT

**5. Special Instructions**

\* LAST CLONE 8/15/2023  
 COMMUNICATION PHONE NUMBER 208-850-2701

**6. Prepared by (Communications Unit Leader):** Name: Sal Bonilla Jr. / Kevin Janes  
 Signature:  Date/Time: 08/19/23 1900  
 NIMS IAP

# ICS 205 - INCIDENT RADIO COMMUNICATIONS PLAN

<b>1. Incident Name:</b> Initial Attack Page 2	<b>2. Date/Time Prepared</b> Date: 08/19/2023 Time: 1900	<b>3. Operational Period:</b> Date From: 08/20/23 Time From: 0600 Date To: 08/20/23 Time To: 1800
--	--	---

4. Communications									
Ch#	Function	Name	Assigned To	Rx Freq	Rx Tone	Tx Freq	Tx Tone	Mode	Notes
1	TACTICAL	TAC 1.		172.2250	(T10) 107.2	172.2250	(T10) 107.2	A	
2	TACTICAL	TAC 2.		172.3750	(T10) 107.2	172.3750	(T10) 107.2	A	
3	TACTICAL	TAC 3		154.3025	(T10) 107.2	154.3025	(T10) 107.2	A	
4	TACTICAL	FNF WRK 1		168.1625	0.0	168.1625	(T7) 167.9	A	
5	COMMAND	CMD DIR	RIDGE COMMAND DIR	167.2500	(T10) 107.2	167.2500	(T10) 107.2	A	
6	COMMAND	CMD RPT	RIDGE COMMAND RPT	167.2500	(T10) 107.2	162.2625	(T10) 107.2	A	
7	FOREST DIR	FNF DIR	FOREST DIRECT	173.1125	0.0	173.1125	(T2) 123.0	A	
8	FOREST RPT	DESERT	FOREST REPEATER	173.1125	0.0	164.3750	(T10) 107.2	A	
9	A/G	FNF A/G	FOREST A/G	169.1250	0.0	169.1250	(T7) 167.9	A	
10	A/G	RIDGE A/G	ALL DIVS	173.8375	0.0	173.8375	(T2) 123.0	A	
11	A/G	AREA A/G	3 A/G52	168.3875	0.0	168.3875	(T2) 123.0	A	
12	MUTUAL FD TAC	MAROON	MUTUAL FD PRI	154.2800	0.0	154.2800	(T6) 156.7	A	
13	MUTUAL FD TAC	SCARLET	MUTUAL FD SEC	154.2950	0.0	154.2950	(T6) 156.7	A	
14	MUTUAL FD TAC	RED	MUTUAL FD IA	154.0700	0.0	154.0700	(T6) 156.7	A	
15	MEDICAL A/G	TAN	MT MEDICAL A/G	155.3400	0.0	155.3400	(T6) 156.7	A	MEDICAL A/G
16	AIRGUARD	AIRGUARD	ALL DIVS	168.6250	0.0	168.6250	(T1) 110.9	A	EMERGENCY CONTACT
17									
18									
19									
20	AIRGUARD	AIRGUARD	ALL DIVS	168.6250	0.0	168.6250	(T1) 110.9	A	EMERGENCY CONTACT

**5. Special Instructions**

\* LAST CLONE 8/15/2023  
 COMMUNICATION PHONE NUMBER 208-850-2701

<b>6. Prepared by (Communications Unit Leader):</b> Name: Sal Bonilla Jr. / Kevin Janes	<b>Signature:</b> 
<b>ICS 205 - CONTROLLED UNCLASSIFIED INFORMATION//BASIC</b>	<b>Date/Time:</b> 08/19/23 1900



# TIN SOLDIER



# Tin Soldier Fire Weather Forecast

**FORECAST NO:** 03  
**PREDICTION FOR:** Sunday  
**SHIFT DATE:** 08/20/23  
**FORECAST ISSUED:** 08/19/23 at 2000 MDT

**NAMES OF FIRES:** Bruce, Sullivan  
**UNIT:** MT-Flathead National Forest  
**SIGNED:** Bob Hoenisch - Incident Meteorologist  
text/email obs: 406-899-4112/[robert.hoenisch@noaa.gov](mailto:robert.hoenisch@noaa.gov)

**WEATHER DISCUSSION:** Moisture spreading north into the region will bring increasing clouds with showers likely to develop by late this afternoon. A few thunderstorms are possible with the initial surge of moisture late this afternoon and evening, which may be accompanied by gusty and erratic winds. Otherwise, general winds over ridgetops will continue from the east with a few gusts to around 15 mph, while light and variable winds prevail on mid to lower slopes. A period of wetting rain is likely tonight as moisture continues to push north and northeast into the region.

## TODAY:

**SKY/WEATHER:** Mostly cloudy. Chance of showers and isolated thunderstorms, mainly after 1600.

**Max Temperature:** 73-78 lower elevations (below 5500 ft) and 67-72 mid-slopes to ridges.

**Min RH:** 26-31% lower elevations (below 5500 ft) and 32-37% mid-slopes to ridges

**20 ft WINDS:** **Slope/Valley** – Becoming light up-slope/up-drainage to 6 mph by 1200.

**Ridgetop** – East 5-10 mph with gusts to around 18 mph.

**LAL:** 2                      **Chance of Wetting Rain (0.10”):** 15%                      **HAINES INDEX:** 3 (Very Low)

## TONIGHT:

**SKY/WEATHER:** Cloudy. Showers likely with a few isolated evening thunderstorms.

**Min Temperature:** 52-57.

**Max RH:** Greater than 75%.

**20 ft WINDS:** **Slope/Valley** – East to Northeast winds 4 to 9 mph.

**Ridgetop** – East winds 5-10 mph with gusts to 15 mph.

**LAL:** 2                      **Chance of Wetting Rain (0.10”):** 70%

## Outlook for MONDAY:

**SKY/WEATHER:** Cloudy with rain likely.

**Max Temperature:** 68-73 lower elevations (below 5500 ft) and 62-67 mid-slopes to ridges.

**Min RH:** 45-50% lower elevations (below 5500 ft) and 50-55% mid-slopes to ridges

**20 ft WINDS:** **Slope/Valley** – East up to 7 mph.

**Ridgetop** – East 5-10 mph with gusts to around 15 mph.

**Extended Forecast Discussion:** Deeper moisture associated with the remnants of Hurricane Hilary is projected to lift north across the Northern Rockies on Monday, bringing a widespread rain. The exact track of embedded heavier precipitation is still evolving but additional precipitation amounts of 0.25” or more are likely (70% chance) with a 40-50% probability of receiving precipitation amounts of 0.50” or more.

8/19/2023 observations thru 2000	Min Temp	Max RH	Max Temp	Min RH	Peak Wind	Precipitation
<b>Spotted Bear Lookout (7202')</b>	40	90%	69	20%	ENE 26 mph	0.00"
<b>IRAWS46-Desert Mtn (6360')</b>	42	77%	67	30%	NE 17 mph	0.00"
<b>IRAWS45-Firefighter Mtn (5683')</b>	44	77%	70	18%	S 15 mph	0.00"
<b>Spotted Bear RS (3725')</b>	42	86%	78	17%	NW 13 mph	0.00"
<b>West Glacier RAWs (3165')</b>	54	57%	79	23%	NNW 16 mph	0.00"
<b>Hungry Horse RAWs (3123')</b>	47	78%	78	21%	ENE 12 mph	0.00"

## FIRE BEHAVIOR FORECAST

<b>FORECAST NUMBER:</b> 3	<b>TYPE OF FIRE</b> Wildfire
<b>FIRE NAME:</b> Tin Soldier	<b>OPERATIONAL PERIOD</b> Sunday August 20, 2023
<b>DATE ISSUED</b> Saturday August 19, 2023	<b>TIME ISSUED</b> 2100
<b>UNIT</b> MT-Flathead National Forest	<b>SIGNED</b> Diondray Wiley Fire Behavior Analyst (FBAN)

### INPUTS

#### WEATHER SUMMARY

**WEATHER:** Mostly cloudy. Chance of showers and isolated thunderstorms, after 1600.

**MAX TEMP:** 73-78 lower elevations (below 5500 ft) and 67-72 mid-slopes to ridges.

**Humidity:** 26-31% lower elevations (below 4500 ft) and 32-37% mid-slopes to ridge

**20 FOOT WINDS: Valleys/Lower Slope:** Becoming light up-slope/up-drainage up to 6 mph by 1200.

**Ridge/Upper slope:** East 5-10 mph with gusts to around 18 mph.

**Haines 3 (Very Low) LAL 2**

**FUELS:** The major fuel types, found in and around the fire area include compact timber stands, timber Understory, brush and heavy down and dead.

**Ignition Receptiveness: ERC:** 45 above the 97<sup>th</sup> percentile. **Burn Index:** 33 above the 90<sup>th</sup> percentile.

**Probability of Ignition:** 70-80% **Spotting distance:** Ridge top timber .1-mile, brush .2-mile

**Dryness:** Dead and down fuel moistures: **1 hour** – 9% **10 hour**-14 %, **100 hour** -13%, **1000 hour**-14%.

### FIRE BEHAVIOR

Forecasted weather conditions (possible showers) will decrease fire activity. Fuels remain dry and receptive. Clear air will intensify fire behavior. The potential for moderate to active fire behavior continues to exist (single tree torching, surface fire, limited spotting) where there's open line. A North wind is forecasted for today's shift. Be mindful of how your work location may be affected by the new wind orientation.

#### SPECIFIC FIRE BEHAVIOR:

**Sullivan Fire:** Moderate fire behavior, West Flank, surface runs, torching and short-range spotting heading upper South Fork Drainage. Fire Flanking into Branch Creek could have possible slope reversal up drainage heading toward South Creek Drainage, Southern movement on both sides of the ridge. North Flank, backing into Ball/Branch Creek. South Flank, backing into Sullivan Creek and possible slope reversal in the Solider Creek drainage. Anticipate active fire behavior in the South Fork Connector drainage and into the Solider Creek drainage.

**Bruce Fire:** Moderate fire behavior. West Flank, backing, flanking, potential roll-out and slope reversal. North and East Flank, single/group torching, spotting and surface runs, flanking fire on Stony Hill along the flats between toe of the slope and Meadow Creek Road. South Flank, likely spotting into Bruce Creek and potential for slope reversal.

#### Aviation Safety/ Watchout:

How might you use helicopter drops to knock down or secure a fire area that poses a direct threat to escaping control lines or climbing ladder fuels?

#### Safety Message/ Watch Out Situations:

Limited visibility may give you a false sense of security.  
Use LCES to ensure you know what the fires are doing around you.

# ASSIGNMENT LIST (ICS 204 WF)

CONTROLLED UNCLASSIFIED  
INFORMATION//BASIC

<b>1. Incident Name:</b>	<b>2. Operational Period:</b>	<b>3. Branch</b>	<b>Division</b>
<b>RIDGE / DORIS POINT / TIN SOLDIER</b>	Date From: 08/20/23      Date To: 08/20/23 Time From: 0600                  Time To: 1800	<b>CCC</b>	<b>CCC</b>

<b>4. Operations Personnel:</b>	Page 1 of 1      Charlie/Charlie
---------------------------------	----------------------------------

Operations Section Chief: <b>David Pereira / Kyle Jacobson / Drew Graham / Kerri Williamson(T)</b>  Branch Director:  Division/Group Supervisor: <b>Cache Gibbons</b>	Night Ops:  Branch Safety:  Air Attack: <b>Jay Walter</b>
---	---

<b>5. Resources Assigned:</b>		<b>** Resources Below in Bold are 12 Hour **</b>							
Resource Identifier	INC	LWD	Leader	Personnel	Request #	Hours	Reporting Location		
CRW1 BITTERROOT IHC	TIN	8/21	<b>GIBBONS, CACHE</b>	<b>19</b>	<b>C-3</b>	<b>0600-1800</b>	<b>RIVER RANCH ICP</b>		
ENG4 BOSKET	TIN	9/1	<b>BAILEY, STEVE</b>	<b>2</b>	<b>E-15</b>	<b>0600-1800</b>	<b>RIVER RANCH ICP</b>		
*TFLD(T) RYAN							<b>RIVER RANCH ICP</b>		
HEQB ANDERSON	RID		<b>ANDERSON, CORY</b>	<b>1</b>	<b>O-23</b>	<b>0600-1800</b>	<b>RIVER RANCH ICP</b>		

**6. Work Assignments:**  
 Point protection of values at risk.  
 Be prepared for defensive firing if fire behavior requires this tactic.  
 Continue fuels reduction, structure prep, setup/test pump sprinklers.

**7. Special Instructions:**  
 Ensure proper bear safety and food storage.  
 \*Denotes local resource on loan to the incident.  
 Wilderness Lodge, Spotted Bear Ranch, and Diamond R have no public present as of 8/16.  
**If you are working on a fire you were not financially assigned to, annotate on your CTR or shift ticket.**

<b>8. Communications</b>								
Name	Ch	Function	Rx Freq	Rx Tone	Tx Freq	Tx Tone	Mode	Notes
CMD SOUT	P3.5	COMMAND	173.1875	(T7) 167.9	164.3875	(T7) 167.9	A	SPOTTED BEAR LOOKOUT - CMD LINK
TAC 1	P3.1	TACTICAL	168.0500	(T7) 167.9	168.0500	(T7) 167.9	A	
TIN A/G	P3.3	A/G	169.2625		169.2625	(T7) 167.9	A	TIN AIR TO GROUND
TAN	15	MEDICAL A/G	155.3400	0.0	155.3400	(T6) 156.7	A	
AIRGUARD	16	AIRGUARD	168.6250	0.0	168.6250	(T1) 110.9	A	

**9. Prepared by: Name:** Sergio Arjonilla / Ryan Da Rosa(T) / Jeff Oliver(T) / Dwayne Preston(T)      RESL

Signature: \_\_\_\_\_

**ICS 204**      Date/Time: 8/19/2023      2200      Personnel Count: 22

# ASSIGNMENT LIST (ICS 204 WF)

CONTROLLED UNCLASSIFIED  
INFORMATION/BASIC

<b>1. Incident Name:</b>	<b>2. Operational Period:</b>	<b>3. Branch</b>	<b>Division</b>
<b>RIDGE / DORIS POINT / TIN SOLDIER</b>	Date From: 08/20/23      Date To: 08/20/23 Time From: 0600              Time To: 1800	<b>NNN</b>	

**4. Operations Personnel:** Page 1 of 1 November/November

Operations Section Chief: <b>David Pereira / Kyle Jacobson / Drew Graham / Kerri Williamson(T)</b> Branch Director: Division/Group Supervisor: <b>Ryle Benke / Zak Parmentier(T)</b>	Night Ops: Branch Safety: Air Attack: <b>Jay Walter</b>
--	---

5. Resources Assigned:	** Resources Below in Bold are 12 Hour **							
Resource Identifier	INC	LWD	Leader	Personnel	Request #	Hours	Reporting Location	
<b>CRW2IA ILLINOIS</b>	TIN	8/26	<b>LEWIS, RICH</b>	<b>20</b>	<b>C-2</b>	<b>0600-1800</b>	<b>RIVER RANCH ICP</b>	
<b>WTS2 CONLEY</b>	TIN	8/26	<b>CONLEY, OWEN</b>	<b>1</b>	<b>E-14</b>	<b>0600-1800</b>	<b>RIVER RANCH ICP</b>	
<b>*WFM1 SPOTTED BEAR</b>	TIN		<b>REED, SCOTT</b>	<b>9</b>		<b>0600-1800</b>	<b>RIVER RANCH ICP</b>	
<b>*WFM BLACK TOOTH</b>	TIN	8/21	<b>BRAZIER, MATT</b>	<b>7</b>		<b>0600-1800</b>	<b>RIVER RANCH ICP</b>	
<b>SMOD MI-HIF</b>	TIN	8/27	<b>SHALLEY, DELLAN</b>	<b>6</b>	<b>O-18</b>	<b>0600-1800</b>	<b>RIVER RANCH ICP</b>	
<b>HETF TOUGH GO</b>	RID	9/2	<b>MILLER, RUSS</b>	<b>6</b>	<b>E-50</b>	<b>0600-1800</b>	<b>RIVER RANCH ICP</b>	
<b>TFLD WOOD</b>	TIN	8/21	<b>WOOD, JAMIE</b>	<b>1</b>	<b>O-32</b>	<b>0600-1800</b>	<b>RIVER RANCH ICP</b>	
<b>TFLD(T) FICKEL</b>	RID	9/2	<b>FICKLE, COYDE</b>	<b>1</b>	<b>O-186</b>	<b>0600-1800</b>	<b>RIVER RANCH ICP</b>	
<b>EMPF HARPER</b>	TIN	8/26	<b>HARPER, TRENTON</b>	<b>1</b>	<b>O-17</b>	<b>0600-1800</b>	<b>RIVER RANCH ICP</b>	
<b>EMPF MIXON</b>	RID	9/1	<b>MIXON, BEJONE</b>	<b>1</b>	<b>O-209</b>	<b>0600-1800</b>	<b>RIVER RANCH ICP</b>	
<b>AMB2 WILDERNESS MEDICS</b>	RID	8/28	<b>MACARTHUR, AMANDA</b>	<b>2</b>	<b>E-58</b>	<b>0600-1800</b>	<b>RIVER RANCH ICP</b>	

**6. Work Assignments:**  
 Point protection of values at risk.  
 Be prepared for defensive firing if fire behavior requires this tactic.  
 Continue fuels reduction, structure prep, setup/test pump sprinklers.

**7. Special Instructions:**  
 Ensure proper bear safety and food storage.  
 \*Denotes local resource on loan to the incident.  
 Establish lookout on East side of road.  
**If you are working on a fire you were not financially assigned to, annotate on your CTR or shift ticket.**

**8. Communications**

Name	Ch	Function	Rx Freq	Rx Tone	Tx Freq	Tx Tone	Mode	Notes
CMD SOUT	P3.5	COMMAND	173.1875	(T7) 167.9	164.3875	(T7) 167.9	A	SPOTTED BEAR LOOKOUT - CMD LINK
TAC 2	P3.2	TACTICAL	168.2000	(T7) 167.9	168.2000	(T7) 167.9	A	
TIN A/G	P3.3	A/G	169.2625		169.2625	(T7) 167.9	A	TIN AIR TO GROUND
TAN	15	MEDICAL A/G	155.3400	0.0	155.3400	(T6) 156.7	A	
AIRGUARD	16	AIRGUARD	168.6250	0.0	168.6250	(T1) 110.9	A	

**9. Prepared by: Name:** Sergio Arjonilla / Ryan Da Rosa(T) / Jeff Oliver(T) / Dwayne Preston(T)      RESL  
 Signature: \_\_\_\_\_

**ICS 204**      Date/Time: 8/19/2023 2200      Personnel Count: 55

# ICS 205 - INCIDENT RADIO COMMUNICATIONS PLAN

CONTROLLED UNCLASSIFIED INFORMATION/BASIC

<b>1. Incident Name:</b> Tin Soldier Fire Page 3	<b>2. Date/Time Prepared</b> Date: 08/19/2023 Time: 1900	<b>3. Operational Period:</b> Date From: 08/20/23 Time From: 0600 Date To: 08/20/23 Time To: 1800
--	--	---

4. Communications										
Ch#	Function	Name	Assigned To	Rx Freq	Rx Tone	Tx Freq	Tx Tone	Mode	Notes	
1	TACTICAL	TAC 1	DIV CCC	168.0500	(T7) 167.9	168.0500	(T7) 167.9	A		
2	TACTICAL	TAC 2	DIV NNN	168.2000	(T7) 167.9	168.2000	(T7) 167.9	A		
3	A/G	TIN A/G	ALL DIVS	169.2625		169.2625	(T7) 167.9	A	TIN AIR TO GROUND	
4	TACTICAL	FNF WRK 1		168.1625	0.0	168.1625	(T7) 167.9	A		
5	COMMAND	CMD SOUT	COMMAND	173.1875	(T7) 167.9	164.3875	(T7) 167.9	A	SPOTTED BEAR LOOKOUT - CMD LINK	
6	COMMAND	CMD NORT	COMMAND	168.1125	(T7) 167.9	163.2875	(T7) 167.9	A	BAPTISTE LOOKOUT - CMD LINK	
7	A/G	FNF A/G		169.1250	0.0	169.1250	(T7) 167.9	A		
8	FOREST RPT	DESERT	BACKUP TO ICP	173.1125	0.0	164.3750	(T10) 107.2	A	HUNGRY HORSE AREA FOREST - LINKED	
9	FOREST RPT	LOOKOUT		173.1125		164.3750	(T11) 114.8	A	SPOTTED BEAR AREA - FOREST LINKED	
10	FOREST RPT	BAPTISTE		173.1125		164.3750	(T13) 141.3	A	MIDDLE RESERVOIR AREA - FOREST LINKED	
11	TACTICAL	R1 TAC		167.1125		167.1125	(T7) 167.9	A		
12	MUTUAL FD TAC	RED		154.0700	0.0	154.0700	(T6) 156.7	A		
13	TACTICAL	LOGGER2		151.5050	(T26) 94.8	151.5050	(T26) 94.8	A		
14	TACTICAL	LOGGER1	DO NOT USE	151.9250		151.9250		A	DO NOT USE	
15	TACTICAL	TAN / MED	ALL DIVS	155.3400		155.3400	(T6) 156.7	A	MEDICAL A/G	
16	AIRGUARD	AIRGUARD	ALL DIVS	168.6250	0.0	168.6250	(T1) 110.9	A	EMERGENCY CONTACT	
17										
18										
19										
20	AIRGUARD	AIRGUARD		168.6250	0.0	168.6250	(T1) 110.9	A	EMERGENCY CONTACT	

**5. Special Instructions**

\* LAST CLONE 8/15/2023  
 COMMUNICATION PHONE NUMBER 208-850-2701

<b>6. Prepared by (Communications Unit Leader):</b> Name: Sal Bonilla Jr. / Kevin Janes	Signature: 
NIMS IAP	Date/Time: 08/19/23

8/19/23

**AIR OPERATIONS SUMMARY ICS-220**

Incident Name / Number: RIDGE / DORIS POINT / TIN SOLDIER / TIN SOLDIER

Sunrise: 6:35, Cutoff: 7:05, Sunset: 20:43

General Remarks, Safety Notes, Hazards, Air Operations Special Equipment, etc.

Backcountry Air Traffic Freq 122.9

Be deliberate with mission objectives and exercise patience with expectations regarding aircraft use, emphasize missions/tactics with the best probability of success.

Maintain situational awareness when flying in low visibility conditions. Most aircraft listed below are prepositioned in the area and may be available as needed.

After August 15, all federal aircraft will cease tactical operations by sunset. Ferry flights allowed for 30 minutes after sunset. This is due to reduced visibility caused by topography.

Time Prepared	Date Prepared	Prepared By		
1600	Saturday, August 19, 2023	Staci Dickson		
Shutdown	Operational Period - Date	Operational Period - Time		
21:13	Sunday August 20, 2023	0700-2100		
Helibase Information	TFR Information	Rescue Ship Information		
Name: Ridge Latitude: 48 27.734N Longitude: 113 59.416W	NOTAM: Ridge 3/6587 Polygon: NM Altitude: 10000' MSL Frequency: 126.8250 NOTAM Tin Soldier 3/7730 Altitude: 12000' MSL Frequency: 127.2500	Day/Host: Night Hoist Name: Two Bear Phone: -911 Make/Model: Bell 429 Location: GPI Request Procedure for These Aircraft: Incident Communications		
(use page 2 if needed) <a href="http://tfr.faa.gov/tfr2/list.html">http://tfr.faa.gov/tfr2/list.html</a>				
Position	Name	Phone	Trainee	Phone
AOBS	Staci Dickson	530-277-5153		
ASGS	Rita Clipperton	530-575-9906	Roger Caballero	530-277-6804
HEBM				
HMGB 4BH	Angie Bealka	218-290-7252	Caitlin Marquez	805-260-1408
HMGB 4CK	Rex Sundstrom	530-559-3370		
HMGB 6TA	Ben O'Connor	406-546-1255		
UAS LDR	Greg Suszek	239-877-9545		
ATGSHLCO	Jay Walter Ridge	(623) 698-8532		
ATGS	Matt Counts Tin Soldier	406-270-7437	Sam Bullington	406-547-4416
HLCO	Luke Abell	808-345-6979	Tim Beck	936-433-9694

**HELICOPTERS ( Use page 2 if Needed )**

FAA #	Type	Make/Model	Helibase	Avail	Start	Remarks	Assigned	Start	Avail	Start	Remarks
234BH	3	AS 350 B3	Ridge		0800	Short Haul	Assigned	0800			
456TA	2	Bell 205A1++	Ridge		1300	Bucket/IA	Assigned	1300			
624CK	1	S61A	GPI		0800	Tanked	On Loan	0800			
47KT	HLCO-319	Bell 407	GPI		0800	Tin Soldier/IA		0800			

**FIXED WING**

FAA #	Type	Make/Model	Base	Avail	Start	Remarks	FAA #	Type	Make/Model	Base	Avail	Start	Remarks
281		CL-415BAE	GPI		900	Scooper	FA31MKR939	T-3		UR-31	Varies		IR/AI
282		CL-415BAE	GPI		900	Scooper							
N76WA	AA-104	AeroCmdr	GPI		800	Tin Soldier							

NOTES: When was the first hot air balloon flown?

**UNMANNED AIRCRAFT SYSTEMS**

FAA #	Type	Make/Model	Base	Avail	Start	Remarks

You haven't seen a tree until you've seen its shadow from the sky. -- Amelia Earhart

# Safety Message

INCIDENT Ridge/Doris Point/ Tin Soldier

DATE: 08/20/2023 TIME: 0600-1800 Day Shift

## Keep your head in the game

- Stay focused on today's work assignment.
- Continue planning to provide for safety then accomplish the mission.
- Watch for complacency or distraction in others, and help them stay sharp.
- Brief your firefighters thoroughly and be methodical and meticulous in your tactics to get the job done safely!

## Stump Holes/ Ash Pits

- **Situational Awareness:** Be alert for stump holes and ash pits when mopping up.
- **Identify stump holes and ash pits** to all personnel.
- **Work with extreme caution in the area:** Wear and use all approved PPE properly. Use the Risk Management Process (IRPG p. 1) to engage.
- **Be alert for hidden hazards:** Burning root systems near stump holes can collapse when stepped on.
- **Beat the Odds:** Most significant burns occur from stump holes and ash pits.

## SNAG SAFETY

- S**ize up snag hazards in work area.
- N**ever become complacent.
- A**lways look up.
- G**et weather reports
- S**cout out parking, sleeping, and work areas and safety zones
- A**dvice co-workers of known hazards.
- F**ace your hazard and take appropriate action.
- E**xamine work area for other hazards.
- T**ake extra caution around heavy equipment.
- Y**ou are ultimately responsible for your own safety.

## CHECK YOUR VEHICLE - CIRCLE OF SAFETY

- Walk around the vehicle.
- Check the windshield, wipers, and wiper fluid levels.
- Keep windows, mirrors, and lights clean to better see and be seen.
- Check headlights, turn signals, tail lights, reflectors and running lights.
- Adjust mirrors.
- Check front and back tires (including wheels and lug nuts).
- Under the hood, check all fluid levels and especially the air filter.

Prepared by:

CIIMT 4 Safety Group





**INCIDENT RISK ANALYSIS**

**ICS (215A) DAY SHIFT**

BR/DV	HAZARDOUS ACTIONS – CONDITIONS	MITIGATIONS – WARNINGS – REMEDIES
ALL	TRAFFIC HAZARDS AND DRIVING	<ul style="list-style-type: none"> <li>• Take extra precautions when entering or exiting the roadways.</li> <li>• Maintain high visibility when in the operational area and use warning lights when working on roads or traveling in smoke.</li> <li>• Many roads are narrow and mid-slope, with soft shoulders. Allow heavy vehicles to pass on the uphill side. Use spotters when backing or turning around.</li> <li>• Be alert for wildlife. Dusk to dawn poses the greatest potential for accidents.</li> <li>• Be aware of and take precautions around logging truck traffic.</li> <li>• When traveling between Tin Soldier and Ridge Fires, include a passenger or travel in a caravan. Select safest route of travel based on fire activity.</li> </ul>
DD, CCC, NNN	POINT PROTECTION	<ul style="list-style-type: none"> <li>• Establish and maintain LCES.</li> <li>• Monitor fire progress, current and expected fire behavior.</li> <li>• Park vehicles pointing toward escape routes.</li> <li>• Maintain a minimum of a quarter tank of water in all engines at all times.</li> </ul>
ALL	HAZARD / DANGER TREES	<ul style="list-style-type: none"> <li>• Follow Hazard Tree Safety Guidelines (IRPG p.20)</li> <li>• Limit the number of personnel around snags and their exposure time.</li> <li>• Fallers must be qualified for the trees being felled.</li> <li>• Be alert around hazard trees during wind events, even green trees.</li> <li>• The hazard zone extends a minimum of 2½ tree lengths.</li> <li>• Avoid parking vehicles or taking breaks under or near hazard trees.</li> </ul>
ALL	AVIATION OPERATIONS	<ul style="list-style-type: none"> <li>• Conduct thorough mission assessments before starting work. Follow the guidelines in the SHO and other aviation guidelines and reference materials.</li> <li>• Ensure coordination and communication are in place and understood by all resources involved in the mission.</li> <li>• Ensure close coordination between Air Attack, air tankers, helicopters, and ground resources.</li> </ul>
ALL	MOP UP	<ul style="list-style-type: none"> <li>• Establish LCES.</li> <li>• Maintain 8-10 foot spacing when working with tools.</li> <li>• Wear proper PPE.</li> <li>• Use caution around stump holes.</li> <li>• Identify and mitigate snags and hazardous fire weakened trees.</li> </ul>
ALL	WEATHER	<ul style="list-style-type: none"> <li>• Maintain continuous Situational Awareness based on the fire environment, observed fire behavior, hazards, and incident objectives.</li> <li>• Take weather throughout the shift to get timely and accurate information.</li> <li>• Is what we predicted what you are observing?</li> <li>• Request spot weather forecasts if you notice a notable change in the weather.</li> <li>• Communicate any weather changes with your crew and adjacent resources.</li> </ul>
ALL	FIRE BEHAVIOR	<ul style="list-style-type: none"> <li>• Are you seeing what we have predicted?</li> <li>• Conduct thorough assessments before starting work.</li> <li>• Ensure LCES is in place.</li> <li>• Plan &amp; communicate your exit strategy with your crew and adjacent resources.</li> <li>• Provide additional briefing for new resources and maintain communications.</li> </ul>
ALL	STEEP TERRAIN & ROLLING DEBRIS	<ul style="list-style-type: none"> <li>• Maintain 8'-10' spacing when working &amp; walking.</li> <li>• Do not work above any personnel.</li> <li>• Evaluate the necessity to send personnel into areas with limited access.</li> </ul>
ALL	DIRECT/ INDIRECT FIRELINE CONSTRUCTION	<ul style="list-style-type: none"> <li>• Establish and maintain LCES.</li> <li>• Utilize favorable locations when constructing control features; i.e. lighter fuels, natural or existing barriers, and ridgelines.</li> <li>• Watch out if there is unburned fuel between you and the fire.</li> <li>• Monitor weather conditions and fire behavior.</li> </ul>
ALL	HEAVY EQUIPMENT OPERATIONS	<ul style="list-style-type: none"> <li>• Ensure communications are established with operators.</li> <li>• Use hand signals if other communications are unavailable.</li> <li>• Maintain a 50'-100' exclusion area around equipment.</li> <li>• Use road guards as needed to control traffic.</li> </ul>
ALL	COMMUNICATIONS	<ul style="list-style-type: none"> <li>• Share your Situational Awareness (hazards, changes, etc.) with those who also have a need.</li> <li>• Answer questions and/or ask for intel when you do not know the plan.</li> <li>• Ensure all personnel are familiar with the incident and IA communications plans.</li> <li>• Ensure radios are cloned and include Ridge, IA and Tin Soldier Groups.</li> </ul>
ALL	WILDLIFE	<ul style="list-style-type: none"> <li>• High concentration of wildlife in the area.</li> <li>• Backhaul garbage from drop points. Do not keep food inside your tent.</li> <li>• Do not feed bears or other wild animals. Never approach bears or cubs.</li> <li>• If encountering a bear, make noise, travel in a group and keep members together. Do not surprise the bear. DO NOT RUN!</li> </ul>

<p><b>INCIDENT NAME:</b></p> <p><b>Ridge/Doris Point/Tin Soldier</b></p>	<p><b>OPERATIONAL PERIOD: 0600 – 1800</b></p> <p><b>AUGUST 20, 2023</b></p> <p>Date/Time Prepared: 08/19/2023 – 1430</p>	
--	--	---



# NOTICE



## You're in Bear Country

- DO NOT bring food, toiletries, or scented items into your tent.
- Sleep at least 100 yards away from the kitchen/food prep area.
- Secure food attractants properly in a bear resistant bin or in a secured building.
- Stay alert and look for bear activity, especially where visibility or hearing is limited (thick vegetation, streams).
- Make noise whenever possible to avoid surprising a bear, especially where visibility or hearing is limited. The human voice is the best deterrent, be loud.
- Travel in a group and keep members together.
- Never run from a bear.
- If a bear is hanging around, alert others, and from a safe place make it leave. Yell, set off car alarms, air horns, bang pots and pans, etc.
- If you experience any type of conflict with a bear or have any questions/concerns, immediately contact Bear Specialist Justine Vallieres at (406)250-1265.



**Human Resources Message  
Ridge Fire  
August 20, 2023**

**RESPECT**

**A BIG THUMBS UP!  
SO FAR, SO GOOD.**

**THANK YOU FOR SHOWING  
EACH OTHER THE HIGHEST  
LEVEL OF RESPECT**



---

**If you have any questions or would like to chat, do  
not hesitate to contact me.**

**Adam Alvarez- HRSP- 707-373-8715**

# Finance Message

Please use the QR code on front page of IAP to submit your time to

[2023.ridge.finance@firenet.gov](mailto:2023.ridge.finance@firenet.gov)

Finance Phone Number: 208-867-3472

If you need assistance with electronic submission, there will be a Finance presence at briefing to assist those in need.

**We now are accepting Time documents for THREE different fires:**

**RIDGE- P1QGT5**

**TIN SOLDIER-P1QGHA**

**DORIS POINT-P1QJ6J**

**Please note on CTR or Shift Ticket which fire you are working on.**

**Turn all time in through the firenet email above.**

- FOR CTR SUBMISSION, PLEASE PUT CTR and RO# IN SUBJECT LINE OF EMAIL.
- FOR SHIFT TICKETS, PLEASE PUT ST AND RO# IN SUBJECT LINE OF EMAIL.
- IF TURNING IN FINAL CTR OR SHIFT TICKET, PLEASE ALSO PUT FINAL IN SUBJECT LINE.
- PLEASE MAKE EVERY EFFORT TO TURN IN ALL CTR'S AND SHIFT TICKETS DAILY.
- PLEASE INCLUDE YOUR RESOURCE ORDER # ON ALL DOCUMENTATION SUBMITTED, INCLUDING RECEIPTS.
- AUTO RESPONSE IS SET UP TO LET YOU KNOW THAT DOCUMENTS WERE RECEIVED.
- FOR DEMOB: Finance will email the Draft OF-288 or OF-286 to employee for their review and approval. If everything is correct, Finance will reply with FINAL OF-288/OF-286.
- CONTRACTORS: Be sure to get Performance Evaluation before demobilization.

## FINANCE CHECK IN:

- PLEASE ENSURE THE BELOW DOCUMENTS ARE EMAILED TO FINANCE WITH RESOURCE ORDER NUMBER NOTED:

Agency Equipment/Crews:	Overhead:	Contract Equipment/Contract Crews:	Cooperator:
<ul style="list-style-type: none"><li>• Manifest</li><li>• Resource Order</li><li>• CTR's</li></ul>	<ul style="list-style-type: none"><li>• Resource Order</li><li>• AD Hire Form (If an AD)</li><li>• CTR's</li></ul>	<ul style="list-style-type: none"><li>• Agreement/Manifest</li><li>• Resource Order</li><li>• Shift Ticket</li><li>• Inspection Forms</li></ul>	<ul style="list-style-type: none"><li>• Cooperative Agreement</li><li>• Resource Order</li><li>• Shift Ticket</li><li>• Inspection Forms</li></ul>

# LINE ORDER FORM



ORDER #	DATE & TIME ORDERED Received from the Line	WHO PLACED ORDER DIVS, OPS, etc....	DELIVER to (DIV, Helispot, DP, etc.) Division, Heli-Spot, Drcp Point, etc.	MODE of DELIVERY Drive, Helo, pick-up			
<b>Order Received in Communications By:</b>				<b>TIME:</b>			
<b>Communications Relay/Placed the Order To:</b>				<b>TIME:</b>			
<b>Order Shipped to the Line By (Name):</b>				<b>TIME:</b>			
ITEM#	DESCRIPTION			AMOUNT			
1	<b>1,000 Foot Hose Lay:</b> Includes the following 10 lengths, 1 1/2" x 100' Hose. 10 lengths, 1" x 100' Hose. 10ea. 1 1/2" Gated Wyes. 10ea. 1 1/2" to 1" Reducers. 10ea. 1" Nozzles.						
2	<b>2,000 Foot Hose Lay:</b> Includes the following 20 lengths, 1 1/2" x 100' Hose. 20 lengths, 1" x 100' Hose. 20ea. 1 1/2" Gated Wyes. 20ea. 1 1/2" to 1" Reducers. 20ea. 1" Nozzles.						
3	<b>3,000 Foot Hose Lay:</b> Includes the following 30 lengths, 1 1/2" x 100' Hose. 30 lengths, 1" x 100' Hose. 30ea. 1 1/2" Gated Wyes. 30ea. 1 1/2" to 1" Reducers. 30ea. 1" Nozzles.						
ITEM#	REQUESTED ITEM	NFES#	AMOUNT	ITEM#	REQUESTED ITEM	NFES#	AMOUNT
4	Backpack Pump, 5 gallon	1149		26	Batteries, "AA", (package)	0030	
5	Foam, 5 gallon	1145		27	Gasoline, Unleaded (gallon)		
6	Hose, 3/4 inch, 50 ft. length	1016		28	Oil, 2 Cycle Mix (quart)	0341	
7	Hose, 1 inch, 100 ft. length	0966		29	Diesel, straight (gallon)		
8	Hose, 1 1/2 inch, 100 ft. length	0967		30	Oil, Bar & Chain (gallon)	1880	
9	Increaser, 3/4" to 1"	2235		31	Fusees (box)	0105	
10	Increaser, 1" to 1 1/2"	0416		32	Torch, Drip Torch ea.	0241	
11	Nozzle, Garden 3/4 inch	0136		33	Mix, Drip Torch 3-1, 5 gal.		
12	Nozzle, Forester, 1"	0024		34	Flagging, Ribbon, Color/Roll		
13	Nozzle, KK Type, 1"	1081		35	Washcloth, Waterless	0206	
14	Nozzle, KK Type, 1 1/2"	1082		36	Water, Cubi, 5 gallon ea.	0048	
15	Reducer, 1" to 3/4"	0733		37	Water, Bottled, (case)		
16	Reducer, 1 1/2" to 1"	0010		38	Sports Drink, Gatorade (case)		
17	Tee, Hoseline, 1"x1"x 3/4"	1809		39	Food, MRE's (12 per Box)	1842	
18	Tee, Hoseline, 1"x1"x 1"	2240		40	Pump Kit, High Pressure	0870	
19	Tee, Hoseline, 1 1/2" x 1 1/2" x 1"	0230		41	Pump, High Pressure	0148	
20	Wye, Gated, 3/4" inch	0904		42	Pump Kit, Light Weight	0670	
21	Wye, Gated, 1"	0259		43	Sprinkler Kit	1048	
22	Wye, Gated, 1 1/2"	0231		44	Pump Kit, Volume	6041	
23	Tank, Collapsible. Capacity Gallons?			45	Mop-Up Kit	0772	
24	Tank, Folding/Frame. Capacity??			46	Fuel (gas/diesel/mix)		
25	Wrap, Structure (roll)	0881					

Date and Time Needed: \_\_\_\_\_ Point of Contact at Delivery Location: \_\_\_\_\_

OTHER / NOTES:

## Incident Replacement Process

Try not to break or lose your toys but in the event... Submit your paperwork early!

**This process is based on Region 1 USFS Incident Operating Guidelines**

- Request for incident replacement must be documented on a 213 AND OF-289.
- Must have all required signatures.
- Submit paperwork to SPUL and COMP for review.
- ORDM will send request to expanded dispatch for S#.
- Upon approval by the Incident Business Advisor the S# will be emailed.
- EXPECT at least 48-72 hours for response!

Please note:

Replacement shall not be authorized using incident funds for loss or damage from normal wear and tear.

PROPERTY LOSS OR DAMAGE REPORT Fire Suppression		1. Crew Name or No. (O#, A#, E# or C#)	2. ID NO (Form OF-289) <b>NOT APPLICABLE</b>
		3. ISSUED TO <i>(List: Individual Name, Home Unit Name, Home Unit Address, Email and Telephone Numbers – Fax, Cell, Work, etc.)</i>	
4. ISSUING OFFICE OR CAMP NAME <i>(Name of Incident Agency and the Incident Number)</i>			
5. FIRE NAME	6. FIRE NO. <i>(Fire Account Code)</i>	7. TYPE EMPLOYEE <i>(Mark one with "X")</i> <input type="checkbox"/> Regular Govt <input type="checkbox"/> Casual Firefighter/AD <input type="checkbox"/> Other _____	
8. DESCRIPTION OF PROPERTY LOST OR DAMAGED <i>(Include Property/Serial No. if applicable. Include approximate year of or age of equipment.)</i>			QUANTITY
a.			
b.			
c.			
9. Employee report on circumstances of loss or damaged to property listed: <i>(Be specific – date, place, division on fire; be descriptive of damage, loss, <b>HOW DID THE FIRE CAUSE THE DAMAGE</b>, etc.)</i>			
10. SIGNATURE			11. DATE
12. Witness report: <i>(Be specific –date, place, division on fire; be descriptive of damage, loss, <b>HOW DID THE FIRE CAUSE THE DAMAGE</b> what did you see, etc.)</i>			
13. SIGNATURE			14. DATE
15. Fire Boss or Property Control Officer comments regarding loss or damage:  <b>Do not complete this section, see next page.</b>			
16. SIGNATURE	17. TITLE	18. DATE	

**Requestor Name:** \_\_\_\_\_

**Resource Order#:** \_\_\_\_\_

**Incident Supervisor:**

Comments:

Name and Position: \_\_\_\_\_

Contact Phone and Email: \_\_\_\_\_

Do Not Recommend     Recommended

Signature & Date: \_\_\_\_\_

**Subject Matter Expert:**

Supply     Ground Support     Communications     Computer Specialist     Other: \_\_\_\_\_

Comments:

Name and Position: \_\_\_\_\_

Contact Phone and Email: \_\_\_\_\_

Do Not Recommend     Recommended

Signature & Date: \_\_\_\_\_

**Incident Agency Representative:**

(Agency Administrator, IBA, Finance Section Chief, Admin Representative, etc.)

**Decision:**

Do Not Approve     Approved

Approved with the following contingencies:

Comments:

Name and Title: \_\_\_\_\_    Signature & Date: \_\_\_\_\_

Contact Phone: \_\_\_\_\_

**Supply Unit:**

Sent to dispatch on: (date) \_\_\_\_\_

Resource Order(s) Assigned: **S**-\_\_\_\_\_





# PUBLIC INFORMATION



**FIRE INFORMATION CONTACT** – Please direct any public or media inquiries to the Information Center at: **406-998-6074** (staffed from 0800-1930) or [2023.ridge@firenet.gov](mailto:2023.ridge@firenet.gov)

Please email/text your photos to: **406-998-6074** or [2023.ridge@firenet.gov](mailto:2023.ridge@firenet.gov)

**Remember we are all an Information Officer – here is some helpful tips:**

### **Fire Information is Everyone’s Job**

Notify chain of command and incident Public Information/ Affairs Officer (PIO/PAO) if media arrives unescorted. Provide for their safety until an escort arrives.

#### **Media Interviews:**

- Develop and deliver key factual messages: anticipate tough questions.
- Give simple answers (10-20 sec.) and avoid using jargon or acronyms.
- Stick to *your* knowledge and avoid speaking for other incident personnel.
- Never speak off the record, exaggerate, or try to be cute or funny.
- Keep quiet in between questions: if you misspeak, ask to start again.
- Be personable, professional, and presentable (remove sunglasses and hat).
- Conclude with a safety or wildfire prevention message.

#### **Social Media – PAUSE Before Posting:**

- PERCEPTION – You are representing the jurisdictional agency and your home unit.
- AUTHORITY – Be aware of federal and host agency social media policies.
- UNDERSTANDING – Know the incident objectives. Never post negative, controversial, or unsafe messages to personal accounts. Ask a PIO/PAO or supervisor for clarification.
- SAFETY – Do not compromise your safety while taking photos and always wear proper PPE. Never post photos of children, inmates, investigations, or cultural sites; be sensitive to burned structures and private information.
- EXPECTATION – Share relevant content or photos with PIOs/PAOs to help tell the incident story.

IRPG – Other References (White)

101 of 120

## **Shower Hours**

0500-1100

1400-2200

## **Breakfast**

0530-0830

## **Dinner**

1800-2130

## **JOKE OF THE WEEK:**

**Time flies like an arrow. Fruit flies like a banana.**

# Training Message



## Trainer / Mentors:



If in the event:

You are leaving the incident before your assigned trainee

Or

Your trainee is reassigned

You must complete a performance evaluation for the period the trainee was assigned to you

## TRAINEES:

***Beat the Rush!!***

**To receive documented credit for your training assignment – you must close out with the Training Specialist before you Demob!!**

**If you are ready – DO IT NOW!**

*The following are needed to close you out*

- **A completed and signed ICS 225 or 226 Performance Evaluation**
- **A completed Exit Interview Form**

Emil Picchi

650.520.5102

TNSPEP@gmail.com



TRAINEE  
CHECK-IN



EXIT  
INTERVIEW



## Air Resource Advisor Message

Be **STRONG** enough to stand on your own,  
SMART enough to recognize when you need help,  
and **BRAVE** enough to ask for it.

Firefighters are known for their courage, but asking for help can be a really tough thing to do.

This was not aimed at smoke exposure, but it applies. Health effects from unhealthy air quality levels include wheezing, difficulty breathing, chest pain or tightness, and rapid heart rate. If you start to experience health impacts from smoke, be smart enough to realize you might need help and brave enough to ask for it.

CIIMT 4 Air Resource Advisor

Margaret Key

434.221.9339

[aramargaretkey@gmail.com](mailto:aramargaretkey@gmail.com)

# DEMOB MESSAGE

## TENTATIVE RELEASE FOR 8/20/23

### Ridge Fire

E-41	ENG6	UTASF E611
E-49	PUP1	UTASF 611 CHASE
E-63	WTS2	ROCKY MOUNTAIN
O-31	DIVS	TODD RUZICKA
O-36	TFLD	MICHAEL GREER
O-137	TFLD	JOE MCGINN
O-172	THSP	SARAH KEY

## TENTATIVE RELEASE FOR 8/21/23

### Ridge Fire

C-7	CRW2IA	KEYSTONE
C-10	CRW1	PLUMAS IHC
E-42	ENG6	DENNISON
E-56	WTT2	WEBER FD
E-57	WTS3	NWMONTANA REAL ESTATE
E-120	ENG6	MO MTF E611
O-43	SEC2	EMMALYN GUZMAN

### Tin Soldier Fire

O-23	HEQB	CORY ANDERSON
O-24	HEQB	JOHN KIRBY

**To request a flight:**

**Submit your  
information at least 72  
hours in advance**

## FLIGHT REQUEST FORM

Request Order #	
Name as shown on photo ID	
Date of Birth	
Cell Phone	
Male or Female	
Email Address	
Last Work Date	
Flight Date	
Departure Airport Code	
Arrival Airport Code	
Rental Location	
Need ride to airport?	

## DEMOB IS LOCATED AT RIVER RANCH ICP

Resources approved for release will report to the Demob Unit to receive a checkout form. The crew leader or single resource will obtain required signatures after turning in any accountable equipment or supplies, vehicle inspections if required, completing any required documentation, and closing out with the Finance Section.

**Brian Talbott, DMOB**

**208-761-2635**

**2023.ridge.demob@firenet.gov**

**VEHICLE INSPECTIONS:**

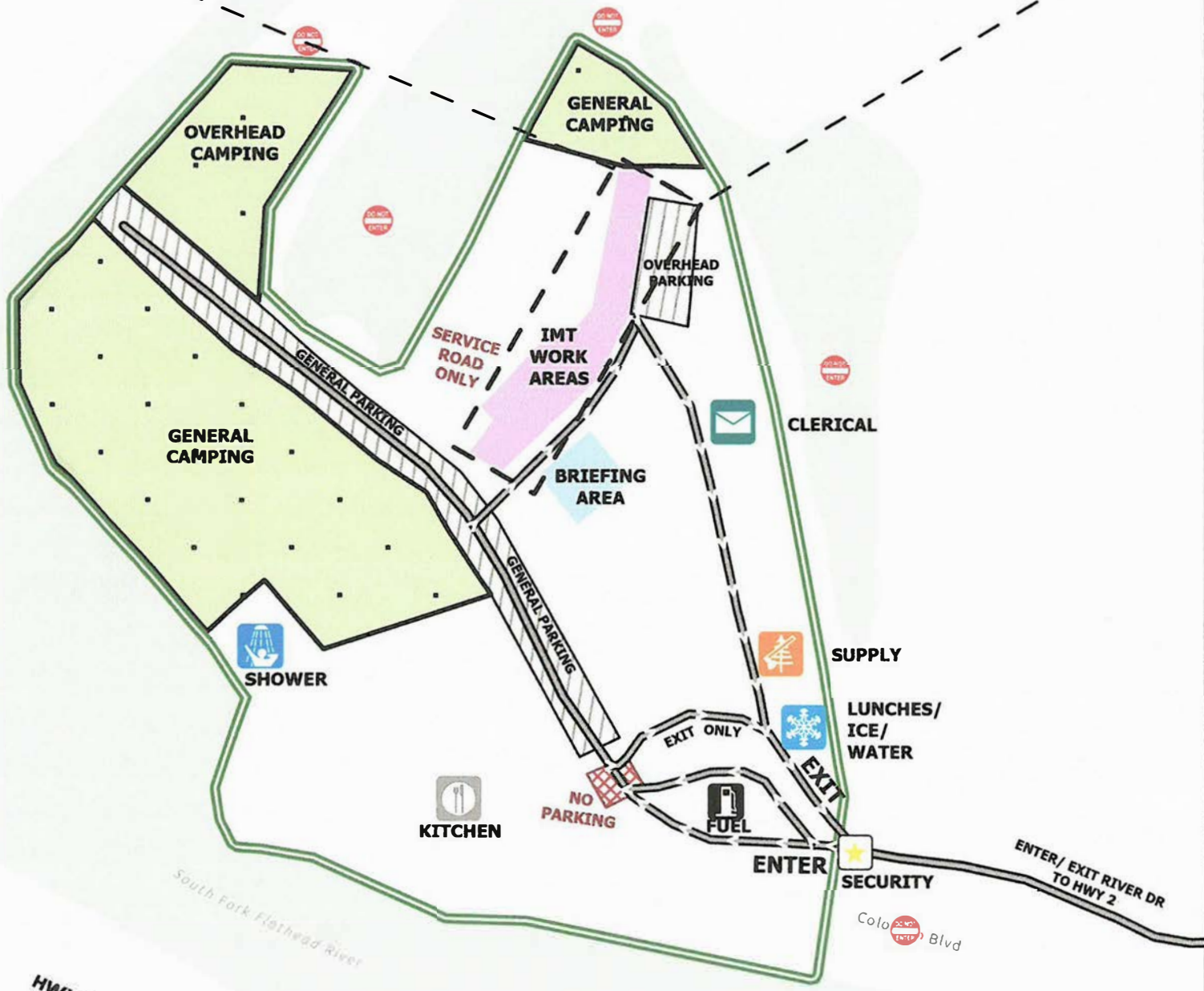
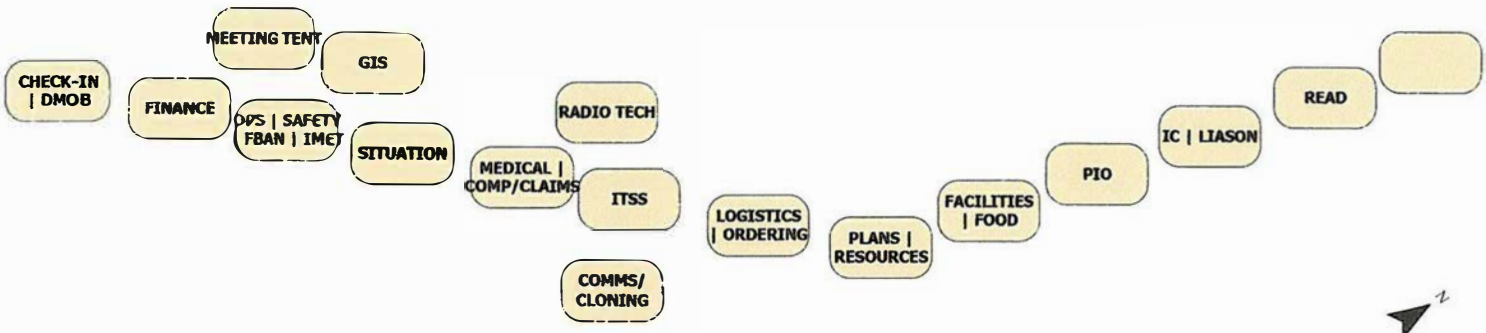
**WEED WASH:**

Located at KOA Staging

251 Halfmoon Flats Rd., West Glacier, MT



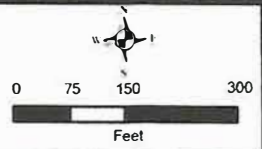
# Incident Management Team Unit Locations

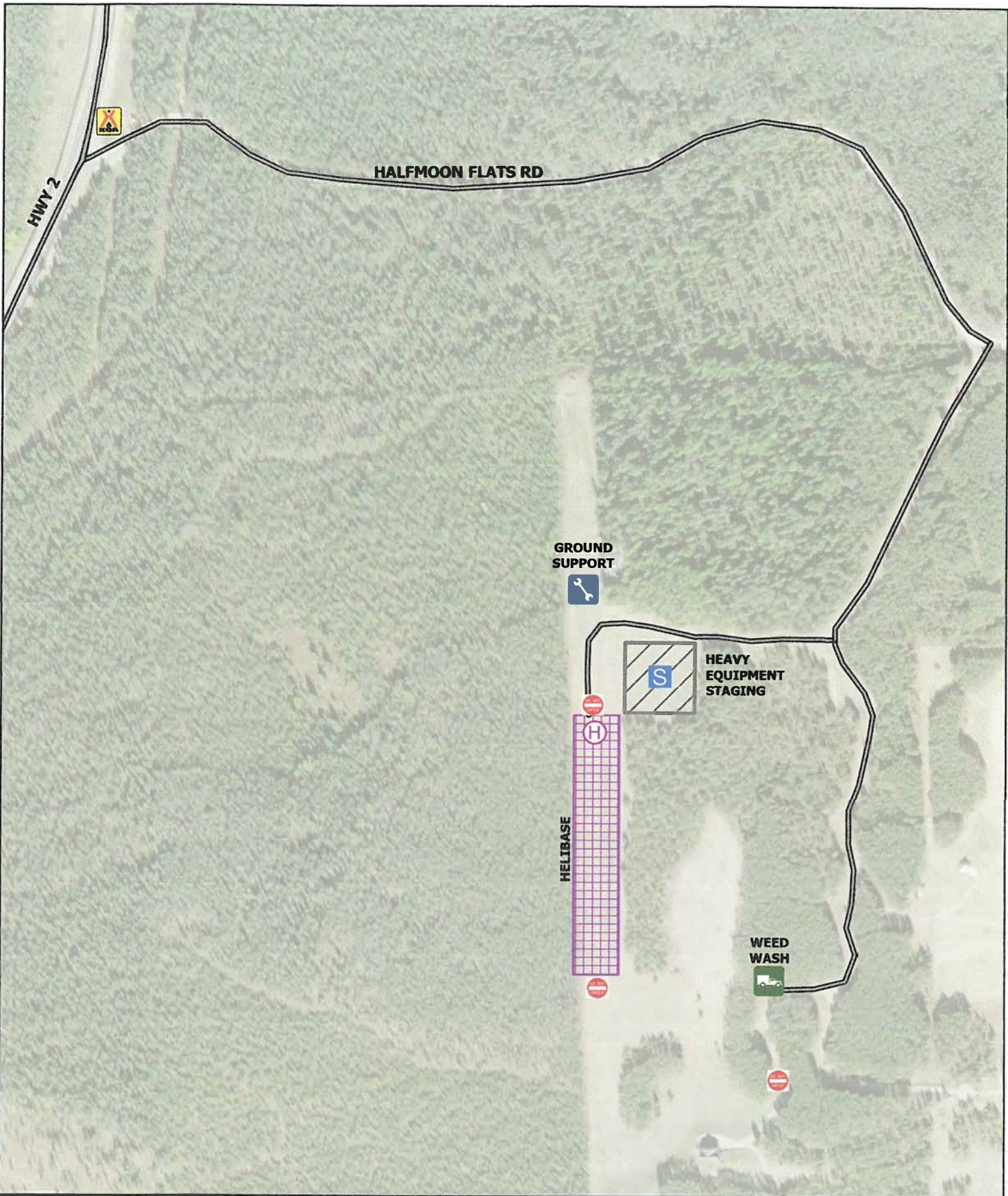


**ICP MAP**  
Ridge  
MT-FNF-000518



- |              |                   |                 |               |
|--------------|-------------------|-----------------|---------------|
| DO NOT ENTER | LUNCHES/ICE/WATER | IMT WORK SPACES | PARKING       |
| CLERICAL     | SHOWER            | IMT WORK AREAS  | NO PARKING    |
| FUEL         | SUPPLY            | BRIEFING AREA   | CAMPING AREAS |
| KITCHEN      | SECURITY          |                 |               |

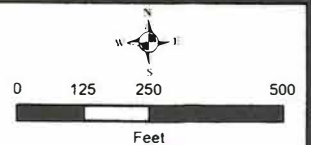






**HALFMOON CAMP**  
 Ridge  
 MT-FNF-000518



-  GROUND SUPPORT
-  HEAVY EQUIPMENT STAGING
-  HELIBASE
-  WEED WASH
-  DO NOT ENTER
-  HEAVY EQUIPMENT STAGING
-  HELIBASE



1. Incident Name				2. Operational Period							
<b>Ridge Fire Medical Plan</b>				Date/Time:							
				<b>8/20/2023 (0600-1800)</b>							
3. Medical Aid Stations / Ambulance Services / REMS											
Name		Location		Contact		Advanced Life Support (ALS) Yes No					
Three Rivers EMS		31 7 <sup>th</sup> Street W, Columbia Falls, MT		911 OR (406)-892-4244		X					
Kalispell Fire Ambulance		Div A DP 10		Incident Dispatch / Communications		X					
Wilderness Medics Ambulance		Spotted Bear Ranger Office		Incident Dispatch / Communications		X					
4. Air Rescue / Air Ambulance Services											
Name		Location		Type of Aircraft & Capability							
ALERT-1		Kalispell, MT		Bell 407 CCT Medical Transport							
Two Bear Air Rescue		Kalispell, MT		Bell 429 Rescue / Hoist NVG							
350 HQ		Available Through Incident Dispatch		H-125 Short-haul							
Trinity Air Ambulance		Missoula, MT		Learjet 35, Fixed Wing CCT Medical Transport							
5. Hospitals (all times estimated from incident location)											
Name & Trauma Level		GPS Datum – WGS 84 Degrees Decimal Minutes		Travel Time (From ICP)		Phone		Helipad Yes No		Address	
				Air	Gnd						
Logan Health Whitefish Level 4		Lat: N 48° 22.51'	7	19	406-863-3500		X		1600 Hospital Way, Whitefish, MT		
		Long: W 114° 19.56'	MINS	MINS							
Logan Health Kalispell Level 3		Lat: N 48° 22.84'	10	33	406-752-5111		X		310 Sunnyview Ln, Kalispell, MT		
		Long: W 114° 19.88'	MINS	MINS							
St Patrick's Med. Center Level 2		Lat: N 113° 59.96'	45	2.5	406-543-7271		X		500 W. Broadway Missoula, MT		
		Long: W 122° 19.39'	MINS	HRS							
Harbor View Medical Regional Burn Ctr./ Level 1		Lat: N 47° 36.24'	1.5	N/A	206-744-3140		X		50 Medical Dr. North Seattle, WA		
		Long: W 122° 19.39'	HRS								
6. Division / Crew Emergency Pre-Plan				<i>Update and discuss with assigned resources daily.</i>							
Fireline EMT / Medic's Division / Branch Location											
Air Hoist site location site: Lat: / Long: / Elevation:											
Helispot: Lat: / Long: / Elevation:  MED LZ:											
7. Prepared By (Medical Unit Leader)			8. Date/Time		9. Reviewed By (Safety Officer)		10. Date/Time				
MEDL Eric Williams / Jeff Brooks / Sam Crenshaw (T) 			8/19/2023 1600		SOF1 Mike 		8/19/2023 1600				

**Medical Incident Report**

FOR A **NON-EMERGENCY INCIDENT**: WORK THROUGH CHAIN OF COMMAND TO REPORT AND TRANSPORT INJURED PERSONNEL AS NECESSARY.

FOR A **MEDICAL EMERGENCY**: IDENTIFY ON SCENE INCIDENT COMMANDER BY NAME AND POSITION AND ANNOUNCE **"MEDICAL EMERGENCY"** TO INITIATE RESPONSE FROM COMMUNICATIONS

**Use the following items to communicate situation to communications/dispatch.**

**1. CONTACT COMMUNICATIONS / DISPATCH** (Verify correct frequency prior to starting report)

*Ex: "Communications, Div. Alpha. Stand-by for Emergency Traffic."*

**2. INCIDENT STATUS:** Provide incident summary (including number of patients) and command structure.

*Ex: "Communications, I have a Red priority patient, unconscious, struck by a falling tree. Requesting air ambulance to Forest Road 1 at (Lat./Long.)"*

*\*This will be the Trout Meadow Medical Incident, IC is TFLD Jones. EMT Smith is providing medical care.\**

Severity of Emergency AND Transport Priority (priority 1, 2, 3)	<input type="checkbox"/> <b>RED / PRIORITY 1 Life or limb threatening Injury or Illness. Evacuation need is IMMEDIATE</b> <i>Ex: Unconscious, difficulty breathing, bleeding severely, 2° - 3° burns more than 4 palm sizes, heat stroke, disoriented.</i>  <input type="checkbox"/> <b>YELLOW / PRIORITY 2 Serious Injury or Illness. Evacuation may be DELAYED if necessary.</b> <i>Ex: Significant trauma, unable to walk, 2° - 3° burns not more than 1-3 palm sizes.</i>  <input type="checkbox"/> <b>GREEN / PRIORITY 3 Minor Injury or Illness. Non-Emergency transport</b> <i>Ex: Sprains, strains, minor heat-related illness.</i>	
Nature of Injury or Illness & Mechanism of Injury		Brief Summary of Injury or Illness <i>(Ex: Unconscious, Struck by Falling Tree)</i>
Transport Request		Air Ambulance / Short Haul/Hoist Ground Ambulance / Other
Patient Location		Descriptive Location & Lat. / Long. (WGS84)
Incident Name		Geographic Name + "Medical" <i>(Ex: Trout Meadow Medical)</i>
On-Scene Incident Commander		Name of on-scene IC of Incident within an Incident <i>(Ex: TFLD Jones)</i>
Crew Patient Care		Name of Care Provider <i>(Ex: EMT Smith)</i>

**3. INITIAL PATIENT ASSESSMENT:** Complete this section for each patient as applicable (start with the most severe patient)

Patient Assessment:      Age:      Weight:      Chief Complaint:  
(IRPG PAGE 106)

Skin Signs: (color/moisture/temp)      Level of Consciousness:      BP:      HR:      Respirations:

Treatment:

**4. TRANSPORT PLAN:**

Evacuation Location (*drop point, intersection, helispot, Lat. / Long, hazards*)      Patient's ETA to Location:

**5. ADDITIONAL RESOURCES / EQUIPMENT NEEDS:**

*Paramedic / EMT - Crews - Immobilization Devices - AED - Oxygen - Trauma Bag - IV/Fluid(s) - Splints - Rope rescue - Wheeled litter - HAZMAT - Extrication*

**6. COMMUNICATIONS: Identify State Air/Ground EMS Frequencies and Hospital Contacts as applicable**

Function	Channel Name/Number	Receive (RX)	Tone/NAC *	Transmit (TX)	Tone/NAC *
COMMAND					
AIR-TO-GRND					
TACTICAL					

**7. CONTINGENCY: Considerations:** If primary options fail, what actions can be implemented in conjunction with primary evacuation method?  
*Be thinking ahead.*

**8. ADDITIONAL INFORMATION:** Updates/Changes, etc.

**REMEMBER:** Confirm ETA's of resources ordered. Act according to your level of training  
Be Alert - Keep Calm - Think Clearly - Act Decisively

\*\*\* Follow up with MEDL upon return to ICP \*\*\*





**UNIT LOG (ICS 214)**

**1. Incident Name:**  
RIDGE / DORIS POINT / TIN SOLDIER

**2. Operational Period:** Date From: 8/20/23 Date To: 8/20/23  
Time From: 0600 Time To: 1800

**3. Unit Name/Designators**

**4. Unit Leader (Name and ICS Position)**

**5. Personnel Assigned/Designators**

NAME	ICS POSITION	HOME BASE

**6. Activity Log (Continue on Reverse)**

TIME	MAJOR EVENTS

**7. Prepared By:** \_\_\_\_\_ **Date/Time:** \_\_\_\_\_

