

INCIDENT ACTION PLAN

Ridge Fire

MT-FNF-000518 P1 QGT5 (0110)

Doris Point Fire

MT-FNF-000496 P1 QJ61 (0110)

Tin Solider Complex

MT-FNF-000535 P1 QGH4 (0110)

WEDNESDAY, August 23, 2023

Day Operational Period: 0700-2000

FOR OFF-DUTY & AFTER HOURS ICP MEDICAL EMERGENCIES

Activate the local 9-1-1 system, then call (719) 207-11485





- IAPs
- Maps
- Check-in
- Blank CTRs
- Blank Shift Tickets
- Finance Email



SOUTHWEST AREA TEAM #1

Carl Schwope – Incident Commander
Jason Clawson – Deputy Incident Commander



INCIDENT OBJECTIVES <small>ICS-202</small>		<small>INCIDENT NAME</small> RIDGE AND DORIS POINT FIRES, TIN SOLDIER COMPLEX	<small>DATE PREPARED</small> 8/22/2023	<small>TIME PREPARED</small> 2000
<small>OPERATIONAL PERIOD (DATE/TIME)</small> <p style="text-align: center;">WEDNESDAY, August 23, 2023 DAY Operational Period: 0700 – 2000</p>				
<small>GENERAL CONTROL OBJECTIVES</small> Leader's Intent <ul style="list-style-type: none"> Effectively implement a value-driven strategy that utilizes a mix of tactics (direct, indirect, and point-protection) when and where the probability of success is high, and the risk is commensurate with the identified values. Success is defined as safely achieving objectives with the least firefighter exposure necessary while enhancing stakeholder support and adhering to the core values of Duty, Respect and Integrity. Control Objectives <ul style="list-style-type: none"> Ridge Fire is a Full Suppression Fire. The Doris Point Fire/Tin Soldier Complex are Point Protection Fires. Minimize loss of our most Highly Valued Resources and Assets including private residences and infrastructure in the communities of Martin City, Hungry Horse, Coram, West Glacier, Hungry Horse Dam and other outlying private property, South Fork Abbot Creek, improvements, and infrastructure in and directly adjacent to the planning area. Additionally, minimize impacts to communication infrastructure on Desert Mountain and Firefighter Lookout. Unless human life is at risk, and to the extent possible, prevent retardant use in identified retardant avoidance areas. Provide initial attack for new wildland fire starts within the designated Temporary Flight Restriction areas. Coordinate with Kalispell Dispatch. Ridge Fire. Keep fire: <ul style="list-style-type: none"> > North of Forest Road 38 > South of the Great Bear Wilderness > East of the communities along Highway 2 > West of the Tiger River Doris Point and Tin Soldier Complex (Sullivan and Bruce Fires): <ul style="list-style-type: none"> > Keep fires west of the western side of Hungry Horse Reservoir (NFSR 895) and Meadow Creek (NFSR 2826) roads. Implement suppression repairs as identified in the approved Suppression Repair Plan. Management Objectives <ul style="list-style-type: none"> Manage risk to incident personnel by ensuring hazards are identified, assessed and where possible mitigated. Accept only necessary risk when values threatened warrant action and the probability of achieving objectives is high. Create and maintain a supportive, positive, and harassment free work environment in which people are treated with respect and dignity. Create a "no tolerance" atmosphere for harassment, alcohol or illegal drug use. Maintain and develop relationships with stakeholders, cooperators, community leaders, tribal representatives, elected officials, private landowners, and livestock permittees. Ensure timely and accurate information and sharing coordination with local authorities. Effectively manage incident costs through the selection and implementation of strategies and tactics that have a high probability of success in meeting objectives. 				
<input checked="" type="checkbox"/> ORGANIZATION LIST (ICS 203) <input checked="" type="checkbox"/> ASSIGNMENT LIST (ICS 204) <input checked="" type="checkbox"/> COMMUNICATION PLAN (ICS 205)		<input checked="" type="checkbox"/> MEDICAL PLAN (ICS 206 & 206WF) <input checked="" type="checkbox"/> AIR OPS. SUMMARY (ICS 220) <input checked="" type="checkbox"/> SAFETY MESSAGE		<input checked="" type="checkbox"/> WEATHER FORECAST <input checked="" type="checkbox"/> FIRE BEHAVIOR FORECAST <input checked="" type="checkbox"/> UNIT LOG
ICS 202	<small>PREPARED BY (PLANNING SECTION CHIEF)</small> Bob Love 		<small>APPROVED BY (INCIDENT COMMANDER)</small> Carl Schwope 	

ORGANIZATION ASSIGNMENT LIST

ICS-203

1. INCIDENT NAME

RIDGE/DORIS POINT/TIN SOLDIER

2. DATE PREPARED

8/22/2023

3. TIME PREPARED

2100 hours

4. OPERATIONAL PERIOD

DATE: 8/23/2023

TIME Day 0700-2000

5. INCIDENT COMMANDER AND STAFF

INCIDENT COMMANDER	Carl Schwope
DEPUTY INCIDENT COMMANDER	Jason Clawson
SAFETY OFFICER	Jim Burton
SAFETY OFFICER – FIELD	Rob Martin
LIAISON OFFICER	Pete Smith/Tom Vigil
LIAISON OFFICER	Troy Waskey (t)
INFORMATION OFFICER	Katy O'Hara / Celeste Prescott
INFORMATION OFFICER	Emery Johnson (t)
HUMAN RESOURCE SPECIALIST	Ana Parada

9. OPERATIONS SECTION

OPERATIONS SECTION CHIEF – FIELD	Ralph Lucas / Charles Ebert (t)
OPERATIONS SECTION CHIEF – PLANNING	Caleb Finch
OPERATIONS SECTION CHIEF – PLANNING	Lindsay McElfresh (t)
OPERATIONS SECTION CHIEF – PLANNING	Brandon Woodward (t)
STRATEGIC OPERATIONS CHIEF	Jayson Coil

6. AGENCY/ORGANIZATION REPRESENTATIVES

AGENCY	NAME
USFS – Flathead NF Agency Admin.	Lisa Timchak
USFS – Flathead NF Agency Admin.	MJ Crandall
USFS – Flathead NF Agency Admin.	Paul Donnellon
NPS – Glacier NP	David Roemer
USFS – Flathead NF IBA	Biddy Simet
Flathead County Sheriff	Brian Heino
Coram Experimental Forest	David Wright
CCC Agency Representative	Miguel Diaz

a. BRANCH I

BRANCH DIRECTOR	Barry Green
DIVISION	A/M
DIVISION	R
DIVISION	W
GROUP	Doris Point
GROUP	Repair
GROUP	
DIVISION/GROUP	
DIVISION/GROUP	

b. BRANCH II

BRANCH DIRECTOR	TJ Lowder
GROUP	Aaron Livingston / A. Strobel (t)
GROUP	
DIVISION	
GROUP	

7. PLANNING SECTION

PLANNING SECTION CHIEF	Bob Love
PLANNING SECTION CHIEF	Dana Bagnoli
RESOURCE UNIT LEADER	Glenda Womack / Mark McEntarffer
RESOURCE UNIT LEADER	Matt Kilford (t) / Brooke Wrye*
SITUATION UNIT LEADER	S. Bliss / C. Munday / D. Lucia
FIRE BEHAVIOR ANALYST	Stewart Turner / RJ Hannah (t)
LONG TERM ANALYST	
METEOROLOGIST	Trent Smith
DEMOBILIZATION UNIT LEADER	
INCIDENT TECHNOLOGY SUPPORT	Dave Kohler / Russell Virgilio
INCIDENT TECHNOLOGY SUPPORT	Gonzalo Hernandez / Mac Hetherington
DOCUMENTATION UNIT LEADER	LT Pratt
GISS	Rick Crawford / David Danker
GISS	Alex Heeren*
TRAINING SPECIALIST	Emil Picchi*
STATUS CHECK IN	Matt Kilford
AIR RESOURCE ADVISOR	Margaret Key
STATUS/CHECK-IN RECORDER	Meghan Han (t)
LEAD RESOURCE ADVISOR	Elliot Meyer

c. BRANCH iii

BRANCH DIRECTOR	
GROUP	
GROUP	
DIVISION	
DIVISION/GROUP	
DIVISION/GROUP	

d. BRANCH

BRANCH DIRECTOR	
GROUP	
GROUP	
GROUP	

e. BRANCH

BRANCH DIRECTOR	
GROUP	

8. LOGISTICS SECTION

LOGISTICS SECTION CHIEF	Sharon Taube / Ray Kingston*
LOGISTICS SECTION CHIEF	Ed Freed / Dean McAllister
a. SUPPORT BRANCH	
SUPPLY UNIT LEADER	Karen Abeita / Carlos Santillana (t)
SUPPLY UNIT LEADER	Chris Bolen (t)
FACILITIES UNIT LEADER	Vonnie Young
GROUND SUPPORT UNIT LEADER	Robert Gill
GROUND SUPPORT UNIT LEADER	Clyde Morace
ORDERING MANAGER	Lorean Hennings
RECEIVING MANAGER	Paul Curtis
b. SERVICE BRANCH	
COMMUNICATIONS UNIT LEADER	Brent Haberer
COMMUNICATION TECHNICIAN	Brad Boyette
SECURITY MANAGER	Don Simon
FOOD UNIT LEADER	Dale Thompson

10. AIR BRANCH

AIR OPERATIONS BRANCH DIR.	Sean Cox
AIR SUPPORT GROUP SUPERVISOR	Brian Knapp
AIR TACTICAL GROUP SUPV	R1 pool

11. FINANCE SECTION

FINANCE SECTION CHIEF	Jamie Wade
FINANCE SECTION CHIEF	Darla Quick
TIME UNIT LEADER	Karen Martinez / Barbara Hogg
COST UNIT LEADER	Scott Turner / Natalie Stewart (t)
COMPENSATION/CLAIMS UNIT LDR	Merlinda Valdez* / Gloria McCabe
COMPENSATION/CLAIMS UNIT LDR	Jennifer Hebbeler (t)
PROCUREMENT UNIT LEADER	Stephanie Archuleta
PERSONNEL TIME RECORDER	Angelita Whatley
EQUIPMENT TIME RECORDER	Beth Hartwood / Kirstin Donelson

12. MEDICAL SECTION

MEDICAL SECTION CHIEF	Bill Kuamo'o
MEDL – PLANNING	Brandy Smith
MEDL – ICP	Cheyenne Lane (t)
MEDL – FIELD	Mike Short (t)

PREPARED BY (PSC) Bob Love



* Virtual Position



Ridge/Doris Point/Tin Soldier Fire Weather Forecast



FORECAST NO: 15
PREDICTION FOR: Wednesday
SHIFT DATE: 08/23/23
FORECAST ISSUED: 08/22/23 at 1930 MDT

NAMES OF FIRES: Ridge, Doris Point, Tin Soldier
UNIT: MT-Flathead National Forest
SIGNED: Trent Smith- **Incident Meteorologist**
 text/email obs: 406-360-6330/trent.smith@noaa.gov

WEATHER DISCUSSION: A weak dry cold front will be moving through the fire location this morning. This front will bring in drier air and gusty west winds. Residual moisture will allow for the potential development of showers and/or thunderstorms this afternoon. These storms will be capable of gusty erratic winds and heavy rainfall. Clearing skies will allow temperatures to drop into the 40s by Thursday morning.

TODAY:

SKY/WEATHER: Partly cloudy. Slight chance of afternoon showers and thunderstorms.
Max Temperature: 70-75 lower elevations (below 4500 ft) and 65-70 mid-slopes to ridges.
Min RH: 35-40% lower elevations (below 4500 ft) and 41-46% mid-slopes to ridges
20 ft WINDS: **Slope/Valley** – Upslope/up-drainage to 7 mph, becoming southwest 4-9 mph in the afternoon.
Doris/Ridge Ridgetop – Southwest 8-13 mph with afternoon gusts to 25 mph.
Tin Soldier Ridgetop - Southwest 12-17 mph with afternoon gusts to 30 mph.
LAL: 2 **Chance of Wetting Rain (0.10"):** 10% **HAINES INDEX:** 2 (Very Low)

TONIGHT:

SKY/WEATHER: Mostly clear.
Min Temperature: 40-45.
Max RH: 80-85% lower elevations (below 4500 ft) and 60-65% mid-slopes to ridges. .
20 ft WINDS: **Slope/Valley** – Southwest up to 7 mph, becoming terrain driven after midnight.
Ridgetop – Southwest 6-11 mph with gusts to 20 mph, decreasing to 3-6 mph after midnight.
LAL: 1 **Chance of Wetting Rain (0.10"):** 0%


Outlook for THURSDAY:

SKY/WEATHER: Mostly sunny.
Max Temperature: 75-80 lower elevations (below 4500 ft) and 69-74 mid-slopes to ridges.
Min RH: 26-31% lower elevations (below 4500 ft) and 35-40% mid-slopes to ridges
20 ft WINDS: **Slope/Valley** – Upslope/up-drainage to 7 mph, becoming northwest 3-8 mph in the afternoon
Ridgetop – Terrain 2-6 mph becoming northwest 5-10 mph in the afternoon.

Extended Forecast Discussion: A ridge of high pressure will become the dominant weather feature over the region into the weekend. This ridge of high pressure will allow for a warming and drying trend as temperatures climb to well above normal reading by Friday.

8/22/2023 observations thru 1900	Min Temp	Max RH	Max Temp	Min RH	Peak Wind	Precipitation
Spotted Bear Lookout (7202')	52	100	67	60	34 mph	0.34
IRAWS46-Desert Mtn (6360')	51	100	63	72	31 mph	0.73
IRAWS45-Firefighter Mtn (5683')	54	100	72	50	26 mph	0.59
Spotted Bear RS (3725')	58	100	82	35	13 mph	0.53
West Glacier RAWS (3165')	59	100	76	65	38 mph	1.50
Hungry Horse RAWS (3123')	60	99	79	58	26 mph	1.08

FIRE BEHAVIOR FORECAST

FORECAST NUMBER: 15	TYPE OF FIRE Wildfire
FIRE NAME: Tin Soldier/Ridge and Doris Point	OPERATIONAL PERIOD August 23, 2023
DATE ISSUED August 22, 2023	TIME ISSUED 2100
UNIT MT-Flathead National Forest	SIGNED Stewart Turner, Fire Behavior Analyst (FBAN) 

INPUTS

WEATHER SUMMARY

WEATHER: Partly cloudy. Slight chance of afternoon showers and thunderstorms.

MAX TEMP: 70-75 lower elevations (below 5500 ft) and 65-70 mid-slopes to ridges.

Humidity: 35-40% lower elevations (below 4500 ft) and 41-46% mid-slopes to ridge

20 FOOT WINDS: Valleys/Lower Slope: Up-slope/up-drainage to 7 mph, becoming southwest 4-9 mph in the afternoon.

Ridge/Upper slope: Southwest 12-17 mph with afternoon gusts to 30 mph.

Doris/Ridge Ridgetop – Southwest 8-13 mph with afternoon gusts to 25 mph.

Tin Soldier Ridgetop - Southwest 12-17 mph with afternoon gusts to 30 mph.

Haines 2 (Very Low) LAL 2

FUELS: The major fuel types, found in and around the fire area include compact timber stands, timber

Understory, brush and heavy down and dead.

Ignition Receptiveness: ERC: 10 well below the 90th percentile.

Probability of Ignition: 29% **Spotting distance:** Ridge top timber .1-mile, brush .2-mile

Dryness: Dead and down fuel moistures: **1 hour** – 10% **10 hour**-24 %, **100 hour** -28%, **1000 hour**-19%.

FIRE BEHAVIOR

The recent showers have moistened the fine dead fuels limiting spread today. Expect to find heat in the dryer heavy fuels. Smoldering will be the most common type of fire behavior today. Some creeping fire behavior may occur this afternoon, movement will be limited.

SPECIFIC FIRE BEHAVIOR:

Sullivan Fire: Low fire behavior will be observed today. No growth is expected with the moist fuels.

Bruce Fire: Low fire behavior is expected, little to no growth is anticipated.

Ridge Fire: No growth is expected. Low fire behavior.

Doris Point Fire: Smoldering will continue in the heavy fuels. Low fire behavior with little growth.

Air Operations:

Afternoon thunderstorms may limit aviation.

Safety Message/ Watch Out Situations:

Gusty winds around thunderstorms may cause erratic fire behavior. Aircraft may not be able to work because of thunderstorm activity. Don't count on aircraft being able to fly to help you out of a bad spot.

DIVISION ASSIGNMENT LIST ICS-204				1. BRANCH 1		2. DIVISION/GROUP A / M		
3. INCIDENT NAME RIDGE				4. OPERATIONAL PERIOD Date: 08/23/2023 Time: 0700-2000				
OPERATIONS PERSONNEL								
PLANNING OPS: Caleb Finch / Lindsay McElfresh (T) / Brandon Woodward (T) FIELD OPS: Ralph Lucas / Charles Ebert (T) DIVISION/GROUP SUPERVISOR: Larry Badger / Nathan Bradford (T) (8/26)				BRANCH DIRECTOR: Barry Green AIR OPERATIONS BRANCH DIRECTOR: Sean Cox				
RESOURCES ASSIGNED THIS PERIOD								
STRIKE TEAM/TASK FORCE/RESOURCE DESIGNATOR	Last Shift	LEADER	NUMBER PERSONS	DROP OFF POINT/TIME	PICK UP POINT/TIME			
TFLD (T) O-101	8/25	Edward Rablin	1	River Ranch ICP / 0700	River Ranch ICP / 2000			
TFLD (T) O-184.82	9/5	Dana Johnston	1	River Ranch ICP / 0700	River Ranch ICP / 2000			
HC2 MARLETTE PEAK C-9	8/27	Jason Foster	23	River Ranch ICP / 0700	River Ranch ICP / 2000			
HC2 R&R CONTRACTING C-30	8/30	Christobal Rocha	20	River Ranch ICP / 0700	River Ranch ICP / 2000			
HC2 IRON MOUNTAIN 6 C-19	8/29	Israel Santana	20	River Ranch ICP / 0700	River Ranch ICP / 2000			
HC2 WEST COAST 33 C-33	8/30	Luis Gonzalez	20	River Ranch ICP / 0700	River Ranch ICP / 2000			
ENG3 MISSOULA CITY E-96	8/25	Jeremy Williams	3	River Ranch ICP / 0700	River Ranch ICP / 2000			
ENG3 AAA FORESTRY E-112	8/25	Jeff Mix-Catron	3	River Ranch ICP / 0700	River Ranch ICP / 2000			
ENG3 LL MEADOW WILDFIRE E-109	8/25	Reed Gracie	3	River Ranch ICP / 0700	River Ranch ICP / 2000			
ENG3 SOLOMAN E-97	8/23	Todd Solomon	3	River Ranch ICP / 0700	River Ranch ICP / 2000			
ENG6 EAST MISSOULA E-94	8/25	Tanner Ferguson	2	River Ranch ICP / 0700	River Ranch ICP / 2000			
WTS2 R2K ENTERPRISES E-26	8/31	Hiram Bird	1	River Ranch ICP / 0700	River Ranch ICP / 2000			
SOFR O-128	8/26	Matthew Martin	1	River Ranch ICP / 0700	River Ranch ICP / 2000			
MED TEAM 3 O-110	9/3	Robert Smith	2	River Ranch ICP / 0700	River Ranch ICP / 2000			
MED TEAM 4 O-109	9/2	James Fox	2	River Ranch ICP / 0700	River Ranch ICP / 2000			
AMBU 10 E-114	8/25	Jessica Kinzer	2	River Ranch ICP / 0700	River Ranch ICP / 2000			
CONTROL OPERATIONS: Task: Patrol fire in Division Alpha commensurate with access due to weather conditions. Purpose: To keep fire in current footprint, minimizing impact to Coram Experimental Forest and reducing risk to the community of Hungry Horse. End State: Fire does not pose a threat to any critical values within or adjacent to the division.								
SPECIAL INSTRUCTIONS: .								
FUNCTION	FREQUENCY Rx	FREQUENCY Tx	CHAN	FUNCTION	FREQUENCY Rx	FREQUENCY Tx	CHAN.	
COMMAND CMD 1	170.4250 / 131.8	168.0750 / 131.8	1	AIR COMMAND A/G PRI	173.8375	173.8375 / 123.0	13	
FOREST RPT	173.1125	164.3750 / 107.2	10					
ROADS	151.5050	151.5050 / 94.8	12	MEDEVAC A/G MED A/G	155.3400	154.3400 / 156.7	15	
TACTICAL TAC 4	168.0500 / 131.8	166.7250 / 131.8	4	AIRGUARD AIRGUARD	168.6250	168.6250 / 110.9	16	
PREPARED BY (RESOURCE UNIT LEADER) Mark McEntarffer				APPROVED BY (PLANNING SECTION CHIEF) Dana Bagnoli <i>Dana Bagnoli PSC</i>			DATE 08/22/2023	TIME 2100

DIVISION ASSIGNMENT LIST

ICS-204

1. BRANCH 1	2. DIVISION/GROUP R
-----------------------	-------------------------------

3. INCIDENT NAME RIDGE	4. OPERATIONAL PERIOD Date: 08/23/2023 Time: 0700-2000
----------------------------------	--

OPERATIONS PERSONNEL

PLANNING OPS: Caleb Finch / Lindsay McElfresh (T) / Brandon Woodward (T) FIELD OPS: Ralph Lucas / Charles Ebert (T) DIVISION/GROUP SUPERVISOR: Ricky Romero / Andre Dulac (T) O-222	BRANCH DIRECTOR: Barry Green AIR OPERATIONS BRANCH DIRECTOR: Sean Cox
---	--

RESOURCES ASSIGNED THIS PERIOD

STRIKE TEAM/TASK FORCE/RESOURCE DESIGNATOR	Last Shift	LEADER	NUMBER PERSONS	DROP OFF POINT/TIME	PICK UP POINT/TIME	
HC1 TATANKA	C-26	8/30	David Zortman	18	River Ranch ICP / 0700	River Ranch ICP / 2000
HC1 LEWIS & CLARK	C-14	8/24	Nicholas Wydra	22	River Ranch ICP / 0700	River Ranch ICP / 2000
TFLD MECHAM	O-138	8/27	Bode Mecham	1	River Ranch ICP / 0700	River Ranch ICP / 2000
TFLD (T) ZIMMER	O-185	9/1	Patrick Zimmer	1	River Ranch ICP / 0700	River Ranch ICP / 2000
TFLD (T)	O-184.77	9/5	Brett Idol	1	River Ranch ICP / 0700	River Ranch ICP / 2000
HC2 WEST COAST 31	C-31	8/30	Julio Olmos	20	River Ranch ICP / 0700	River Ranch ICP / 2000
HC2 PNW FIRE	C-20	8/28	Miguel Esquibel	20	River Ranch ICP / 0700	River Ranch ICP / 2000
ENG3 CASTLE MOUNTAIN	E-111	8/25	John Tiller	3	River Ranch ICP / 0700	River Ranch ICP / 2000
ENG3 SHERIDAN	E-110	8/25	Bob Sheridan	4	River Ranch ICP / 0700	River Ranch ICP / 2000
LOGL SLACK	E-34	9/1	Jamie Slack	1	River Ranch ICP / 0700	River Ranch ICP / 2000
LOGL SIDERIUS	E-35	9/1	Brandon Clouse	1	River Ranch ICP / 0700	River Ranch ICP / 2000
LOGT MATHENY LINE	E-132	8/30	Timothy Matheny	1	River Ranch ICP / 0700	River Ranch ICP / 2000
LOGT RONKOSKI TRUCKING	E-133	8/30	Ron Koski	1	River Ranch ICP / 0700	River Ranch ICP / 2000
HEQB	O-190	8/28	Kyler Knapp	1	River Ranch ICP / 0700	River Ranch ICP / 2000
HEQB (T)	O-187	9/1	Drew Czynson	1	River Ranch ICP / 0700	River Ranch ICP / 2000
HEQB	O-188	9/2	Zach Emerson	1	River Ranch ICP / 0700	River Ranch ICP / 2000
WTS2 WALKING Y4	E-27	8/31	Al Hensley	1	River Ranch ICP / 0700	River Ranch ICP / 2000
WTS2 MARTIN CITY	E-61	8/24	Tom Torpin	2	River Ranch ICP / 0700	River Ranch ICP / 2000
SOFR	O-157	8/30	Troy Maguire	1	River Ranch ICP / 0700	River Ranch ICP / 2000
MED TEAM 6	O-208	9/2	Ayala Rahm	3	River Ranch ICP / 0700	River Ranch ICP / 2000
MED TEAM 1	O-63	8/28	Justin Spears	2	River Ranch ICP / 0700	River Ranch ICP / 2000

CONTROL OPERATIONS:
 Task: Scout and plan for direct / indirect fireline from the 5360 road to Emery Creek commensurate with access due to weather conditions.
 Purpose: Identify appropriate line for control operations.
 End State: Fireline in the correct location with the right dimensions to contain the fire.

SPECIAL INSTRUCTIONS:
 .

FUNCTION	FREQUENCY Rx / TONE	FREQUENCY Tx / TONE	CHAN	FUNCTION	FREQUENCY Rx / TONE	FREQUENCY Tx / TONE	CHAN.		
COMMAND	CMD 1	170.4250 / 131.8	168.0750 / 131.8	1	AIR COMMAND	A/G PRI	173.8375	13	
FRST RPT		173.1125	164.3750 / 107.2	10					
ROADS		151.5050	151.5050 / 94.8	12	MEDEVAC A/G	MED A/G	155.3400	155.3400 / 156.7	15
TACTICAL	TAC 7	166.7250 / 131.8	166.7250 / 131.8	7	AIRGUARD	AIRGUARD	168.6250	168.6250 / 110.9	16

PREPARED BY (RESOURCE UNIT LEADER) Mark McEntarffer	APPROVED BY (PLANNING SECTION CHIEF) Dana Bagnoli <i>Dana Bagnoli PSC</i>	DATE 08/22/2023	TIME 2100
--	--	--------------------	--------------

DIVISION ASSIGNMENT LIST

ICS-204

1. BRANCH

2

2. DIVISION/GROUP

TIN SOLDIER

3. INCIDENT NAME

TIN SOLDIER

4. OPERATIONAL PERIOD

Date: 08/23/2023

Time: 0700-2000

OPERATIONS PERSONNEL

PLANNING OPS: Caleb Finch / Lindsay McElfresh (T) / Brandon Woodward (T)

FIELD OPS: Ralph Lucas / Charles Ebert (T)

DIVISION/GROUP SUPERVISOR: Aaron Livingston / Aaron Strobel (T)

BRANCH DIRECTOR: TJ Lowder

AIR OPERATIONS BRANCH DIRECTOR: Sean Cox

RESOURCES ASSIGNED THIS PERIOD

STRIKE TEAM/TASK FORCE/RESOURCE DESIGNATOR		Last Shift	LEADER	NUMBER PERSONS	DROP OFF POINT/TIME	PICK UP POINT/TIME
HC1 LOLO	C-22	8/26	Shawn Faiella	24	Spotted Bear / 0700	Spotted Bear / 2000
HC2IA ILLINOIS	C-2	8/26	Rich Lewis	20	Spotted Bear / 0700	Spotted Bear / 2000
TFLD	O-32	8/25	Jamie Wood	1	Spotted Bear / 0700	Spotted Bear / 2000
TFLD (T)	O-186	9/2	Coyde Fickle	1	Spotted Bear / 0700	Spotted Bear / 2000
TFLD	O-4	9/1	Aaron Strobel	1	Spotted Bear / 0700	Spotted Bear / 2000
TFLD (T) LL	O-2	8/24	William Ryan	1	Spotted Bear / 0700	Spotted Bear / 2000
SMOD GREAT LAKES *		9/2	Chris Loomis	18	Spotted Bear / 0700	Spotted Bear / 2000
SMOD MI-HIF	O-18	8/27	Deelan Shalley	6	Spotted Bear / 0700	Spotted Bear / 2000
WFM SPOTTED BEAR *			Scott Reid	9	Spotted Bear / 0700	Spotted Bear / 2000
ENG4 BOSKET	E-15	9/1	Steve Bailey	2	Spotted Bear / 0700	Spotted Bear / 2000
HETF TOUGH GO	E-50	9/2	Russ Miller	6	Spotted Bear / 0700	Spotted Bear / 2000
WTS2 CONLEY	E-14	8/26	Owen Conley	1	Spotted Bear / 0700	Spotted Bear / 2000
SOF2	O-97	8/27	Cougan Carothers	1	Spotted Bear / 0700	Spotted Bear / 2000
MED TEAM 7	O-209	9/1	Bejone Mixon	2	Spotted Bear / 0700	Spotted Bear / 2000
AMBU 9	E-58	8/28	Amanda Macarthur	2	Spotted Bear / 0700	Spotted Bear / 2000

CONTROL OPERATIONS:

Task: Assist with point protection at the Spotted Bear Ranger Station, Diamond R Ranch, Spotted Bear Ranch, Wilderness Lodge, and Pen Creek Bridges.
 Monitor spot fires daily ensuring they are contained.
 Purpose: Prevent loss or damage to values and keep the fire within its current footprint.
 End State: Fire does not pose a threat to the values identified and protected.

SPECIAL INSTRUCTIONS:

* Denotes local resource on loan and have IA responsibilities.

FUNCTION		FREQUENCY Rx / TONE	FREQUENCY Tx / TONE	CHAN	FUNCTION		FREQUENCY Rx / TONE	FREQUENCY Tx / TONE	CHAN.
COMMAND	CMD S	173.1875 / 167.9	164.3875 / 167.9	P3.5	AIR COMMAND	A/G PRI	169.2625	169.2625 / 167.9	P3.3
FRST RPT		173.1125	164.3750 / 114.8	9	AIR COMMAND	FNF A/G	169.1250	169.1250 / 167.9	7
TACTICAL	TAC 1	168.0500 / 167.9	168.0500 / 167.9	P3.1	MEDEVAC A/G	MED A/G	155.3400	155.3400 / 156.7	15
TACTICAL	TAC 2	168.2000 / 167.9	168.2000 / 167.9	P3.2	AIRGUARD	AIRGUARD	168.6250	168.6250 / 110.9	16

PREPARED BY (RESOURCE UNIT LEADER)

Mark McEntarffer

APPROVED BY (PLANNING SECTION CHIEF)

Dana Bagnoli



DATE

08/22/2023

TIME

2100

Controlled Unclassified Information/Basic

AIR OPERATIONS SUMMARY

Ridge/Dorris Point/ Tin Soldier Complex

Prepared By: Sean Cox AOB

Prepared: 08/22/2023

Prepared Time: 1400 hrs.

2. OPERATIONAL PERIOD
08/23/2023

START TIME: 0700
END TIME: 2000

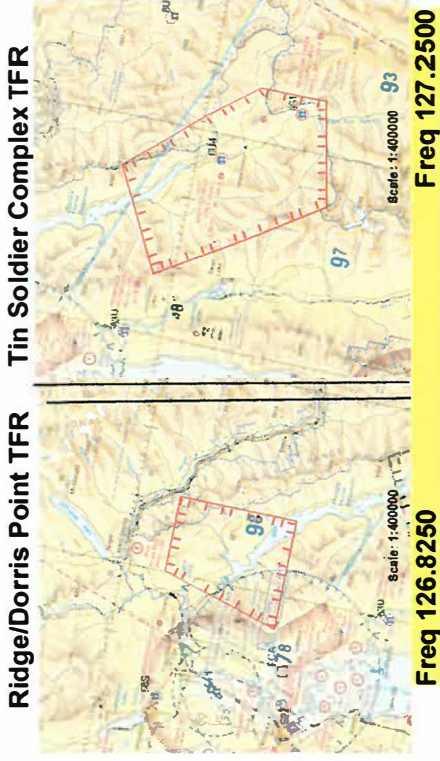
SUNRISE: 0641
SUNSET: 2036

ALL AIRCRAFT ARE ON PREPOSITION AND ARE NOT ASSIGNED TO ANY ONE FIRE. AS SUCH, IF THERE IS A NEED FOR ROTER WING AIRCRAFT IN THE ABSENCE OF AERIAL SUPERVISION, ORDER AIRCRAFT THROUGH AIR SUPPORT.

DO YOUR PART FOR AVIATION MISSION SUCCESS. A NUMBER OF FACTORS CAN CONTRIBUTE TO DELAYS IN AIRCRAFT ON SCENE TIMES. SOME CONTRIBUTORS TO DELAYS INCLUDE RISK ASSESSMENTS, WEATHER, UNCLEAR INTENT, OR HIGHER LOCALIZED, REGIONAL, OR NATIONAL PRIORITIES TO NAME A FEW.

MULTI-MISSION AIRCRAFT AND PRODUCTS (IR/VIDEO/MAPPING) AVAILABLE. ORDER THROUGH AIR OPERATIONS.

AGENCY EXTRACTION (SHORT-HAUL) H-OCH : KALISPELL AIRPORT | NIGHT/COMM HOIST: TWO BEAR AIR : GLACIER PARK INT'L AIRPORT RDER THROUGH COMMUNICATIONS



6. PERSONNEL	NAME	PHONE #	7. FREQUENCIES	AM	FM	8. FIXED-WING Avail/ Type/ Make-Model/ N#/ Base
AOBD	Sean Cox	530-409-2363	CMND ALL FIRES SEE 205			AIRTANKERS/ SCOOPERS: ORDER THRU AERIAL SUPERVISION
ASGS	Brian Knaop	520-591-2704	Ridge/ Dorris Point A/G		173.8375 Tx Tone 123.0	
ATGS	Matt Counts	406-270-7437	Ridge/Dorris Point A/A		126.8250	Ridge Helibase: 48 27.734 x 113 59.416 "West Glacier KOA "
HLCO	John Harris	805-550-7903	Tin Soldier A/G		169.6265 no tone	Finance email: 2023.ridge.finance@firenet.gov OR MS TEAMS Channel under respective fire name.
Kalispell Dispatch	Aircraft Desk	406-758-5306	Tin Soldier A/A		127.250	
Flathead FAO	Mike Bentley	370-760-5428	Medical A/G		155.3400 Tx Tone 156.7	

FAA N#	TY	MAKE/ MODEL	BASE	START	AVAIL	REMARKS	FAA N#	TY	MAKE/ MODEL	BASE	START	AVAIL	REMARKS
	1					Order through ASGS							
	2					Order through ASGS							
	3					Order through ASGS							

SHORT-HAUL OPERATIONS

CAPABILITIES

- During an operational Short-Haul the helicopter is capable of inserting Short-Haulers into an area with tight canopy cover and/or technical terrain.
- Haul line lengths range from 100 feet to 350 feet.
- Short hauler and/or medical gear can be delivered to the medical scene even if extraction by short-haul is not necessary.

ORDERING

- EMT or Medical Incident IC determines medical extraction is required.
- Follow local established procedures and/or Medical Incident Report (MIR) in the IRPG.
- Confirm aircraft type, call sign, estimated time of arrival and frequency.
- Give site selection information when ordering: hazards (i.e. ash, smoke, snags, aerial), tree height, terrain, and patient transport configuration (supine or seated position). Repeat hazards and give updated weather conditions as well as brief patient update to responding helicopter.

PROCESS: The helicopter will fly to the coordinates provided. They will make contact with ground personnel on scene with the patient using an identified air-to-ground frequency. The helicopter will complete a short-haul recon and size up, gather patient update information and then fly to a landing zone (LZ) to configure for short-haul operations. The helicopter will be monitoring the appropriate air-to-ground, air guard and victor frequencies. From this point, ground resources should only contact the helicopter in case of an emergency. During the insertion and extraction process ground personnel must be clear of the area.

ON SCENE – EXPECT THE FOLLOWING

- 1 or 2 rescuers (at least one qualified as an EMT or higher)
- Backboard (if needed and not already on scene)
- All equipment necessary for patient extraction

The Patient Extraction Bag accommodates most backboards.

- A patient on a backboard, TRS, SKED or litter will be inserted into the



The Seat Harness is used for patients not requiring the use of a backboard.



SAFETY/RISK MESSAGE

Incident Name: Ridge / Doris Point Tin Soldier Complex	Date: 8/23/2023	Signed: <i>Jim Burton</i> SOF1
--	------------------------	---------------------------------------

Safety Discussion

TRANSITION TO SW TEAM 1, CARL SCHWOPE. What does this mean and why does everyone talk about it's "transition day" watch-out. When you hear it is transition day it means verify your chain of command, communications, and leader's intent. These are the critical elements that must be double checked on transition day:

1. Ensure who you're working for and where you are working. Who is your supervisor working for?
2. Communications, have they changed? What tactical channel is on the 205 for your division? Is there a different tac on the 204? What about air to ground frequencies and channels are those the same?
3. Leaders intent needs to be reaffirmed. That means look at your task, purpose, end state on your 204. Ensure briefing from division and understand what, where and why. Review your IWI plan and procedures.

Use the GAR 2.0 below to improve your risk awareness & decisions. Share and compare your results with others. What's different? Why?

Significant Risks

Aviation Use Hazards	Moderate Risk	Is this mission necessary to meet objectives? Varying winds with an arriving dry cold front could lead to unanticipated gusts/winds. Stay apprised of the weather conditions on what could be a dynamic weather day.
Driving Hazards	Moderate Risk	Muddy conditions will still persist and will require even slower speeds on dirt roads than anticipated. Expect the unexpected on blind corners and areas where hillsides can lead to rolling material into the roadway. Stay focused on your task of driving.
Fire Entrapment Hazards	Low Risk	Very unlikely this risk presents itself but ensure you have LCES in the event of bad weather or other threats.
Hit by Hazards	Moderate Risk	Saturated soils and higher wind speeds in the afternoon or outflows from any thunderstorms could lead to increase likelihood of trees falling and even more so in burned areas. Keep your heads up and mitigate hazard trees or avoid those areas.
Environmental Hazards	Moderate Risk	Thunderstorms are possible today but more isolated. Ensure you seek shelter if thunderstorms are near. If caught in a storm spread out so less people are affected if lightning strikes your locations. There is no radar so your eyes are the key.

NIOSH Heat Safety Tool



Incident Response Pocket Guide (IRPG)



Mission Risk Assessment (GAR 2.0)

Step 1: Identify, Assess, & Mitigate Risk Elements

Instructions: To determine the level of risk for each element below, estimate the risk level based on the Low/Medium/High scale. If your perceived rating is Medium or High, explore mitigations. Mark the element that corresponds to the mitigated risk level and document the perceived risk(s) and mitigation(s).	THESE ELEMENTS ARE IDENTIFIED AS CONTRIBUTING TO A LARGE PORTION OF RISK. RATE EACH ELEMENT BELOW		
Planning - Enough time and information for thorough planning, briefing and implementation. Consider: Completeness of mission information and on-scene details/hazards, contingency plan discussed, LCES.	Complete Low	Partial Medium	None High
Event - Refers to mission complexity. Consider: task duration, overextended, air support or logistics dependent, accessibility (remote location, access), urban interface, public evac, coordination, etc.	Routine Low	Infrequent Medium	Abnormal High
Assets - Proper number and skill set for the mission. Consider: qualifications, experience, familiarity w/ task, physical/mental state (fatigue, stress, etc.), adequate supervision (span of control), organization.	Excellent Low	Marginal Medium	Poor High
Communications/Supervision - Ability to maintain communication throughout mission. Consider: availability & quality w/ command & adjoining forces, clear task - purpose - end state, backup comms, limited comms.	Excellent Low	Partial Medium	None High
Environment - Conditions surrounding mission. Consider: weather, vegetation, temperature, night/day, rugged terrain, visibility, etc.; physical hazards, road conditions, vapors, ongoing ops, snags, wildlife, etc.	Ideal Low	Marginal Medium	Extreme High

Step 2: Determine Overall Risk Level

Consider: 1) the rating for each element above, 2) the importance of the element for mission execution, 3) how elements may interact. Rate the perceived Overall Risk Level when considering this info.	Low	Medium	High
---	-----	--------	------

Step 3: Determine Risk vs. Gain: Do gains warrant the risk?

Step 3a. Enter the Overall Risk Level (Step 2) in the RISK box (Low, Medium, or High). Step 3b. Review the definitions for Gain below and enter the level in the GAIN box. (Low, Medium, or High).		←RISK VS. GAIN →	
Low Gain - Situation with unclear benefits or a low probability for providing concrete results. Examples: no threat to public safety, minor impact to livelihood, low environmental impact, minimal public interest/concern, non-urgent/time sensitive activity.			
Medium Gain - Situation that provides immediate and real benefits. Examples: minor threat to public safety, medium impact to livelihood, significant environmental impact, public interest/concern.			
High Gain - Situation that provides immediate and real benefits that if ignored could result in loss of life. Examples: significant threat to public safety or security, urgent SAR, major impact to livelihood, significant environmental impact, high public interest.			



NOTICE



You're in Bear Country

- DO NOT bring food, toiletries, or scented items into your tent.
- Sleep at least 100 yards away from the kitchen/food prep area.
- Secure food attractants properly in a bear resistant bin or in a secured building.
- Stay alert and look for bear activity, especially where visibility or hearing is limited (thick vegetation, streams).
- Make noise whenever possible to avoid surprising a bear, especially where visibility or hearing is limited. The human voice is the best deterrent, be loud.
- Travel in a group and keep members together.
- Never run from a bear.
- If a bear is hanging around, alert others, and from a safe place make it leave. Yell, set off car alarms, air horns, bang pots and pans, etc.
- If you experience any type of conflict with a bear or have any questions/concerns, immediately contact Bear Specialist Justine Vallieres at (406)250-1265.

INCIDENT RADIO COMMUNICATIONS PLAN

Incident Name: **Branch 1 - Ridge Fire**

Date/Time Prepared: **08/22/2023 1800**

Operational Period Date/Time: **08/23/2023 0700 to 08/24/23 0700**

C		Channel Name/Trunked Radio System Talkgroup	Assignment	RX Freq	RX Tone/NAC	TX Freq	Tx Tone/NAC	Mode A, D or	Remarks
1	CMD	CMD C3	All Divs	170.4250	131.8	168.0750	131.8	A	Command
2	CMD	CMD C6	Future	168.4750	131.8	165.4000	131.8	A	
3								A	
4	TAC	TAC 4	DIV A/M	168.0500	131.8	168.0500	131.8	A	DIV A/M
5	TAC	TAC 5		168.2000	131.8	168.2000	131.8	A	
6	TAC	TAC 6		168.6000	131.8	168.6000	131.8	A	
7	TAC	TAC 7	DIV R	166.7250	131.8	166.7250	131.8	A	DIV R
8	TAC	TAC 8	DIV W	166.7750	131.8	166.7750	131.8	A	DIV W
9	TAC	TAC 9	Doris	168.2500	131.8	168.2500	131.8	A	Doris Point Group
10	FOREST	DESERT	All Divs	173.1125		164.3750	107.2		Kalispell Dispatch
11	Mutual FD Tac	RED	Mutual FD Tac	154.0700		154.0700	156.7	A	Local FD Tac
12	Roads	Roads	All Divs	151.5050		151.5050	94.8	A	
13	A/G PRI	A/G PRI	All Divs	173.8375		173.8375	123.0	A	
14								A	DO NOT USE
15	Medical A/G	TAN	All Divs	155.3400		155.3400	156.7	A	Primary Medical Evac
16	AIRGUARD	AIRGUARD	All Divs	168.6250		168.6250	110.9	A	AIRGUARD

Prepared By (Communications Unit): **Brent Haberer COML / Brad Boyette COML-T**

Last Clone Name: **08/15/2023**

Communications Phone: **303-549-9831**

After hours Medical 719-207-1148

Use Human Repeaters when and where necessary.

Use only Channels assigned.

Controlled Unclassified Information//Basic

NFES 1330

INCIDENT RADIO COMMUNICATIONS PLAN

Incident Name		Date/Time Prepared		Operational Period Date/Time					
Branch 2 - Tin Soldier Fire		08/22/2023 @ 1800		08/23/2023 0700 to 08/24/2023 0700					
Controlled Unclassified Information//Basic									
Ch	Function	Channel Name/Trunked Radio System Talkgroup	Assignment	RX Freq	RX Tone/NAC	TX Freq	Tx Tone/NAC	Mode A, D or	Remarks
1	TAC	TAC 1	Tin Soldier	168.0500	167.9	168.0500	167.9	A	Tin Soldier Group
2	TAC	TAC 2		168.2000	167.9	168.2000	167.9	A	Unassigned
3	A/G	TIN A/G	All DIV	169.2625		169.2625	167.9	A	Tin Soldier A/G
4	TAC	FNF WRK1		168.1625		168.1625	167.9	A	
5	CMD	CMD SOUT	Command	173.1875	167.9	164.3875	167.9	A	Spotted Bear Lookout – CMD Link
6	CMD	CMD NORT	Command	168.1125	167.9	163.2875	167.9	A	Baptiste Lookout – CMD Link
7	A/G	FNF A/G		169.1250		169.1250	167.9	A	
8	Forest RPT	DESERT	Backup to ICP	173.1125		164.3750	107.2	A	Hungry Horse Area – Linked
9	Forest RPT	LOOKOUT		173.1125		164.3750	114.8	A	Spotted Bear Area – Linked
10	Forest RPT	BAPTISTE		173.1125		164.3750	141.3	A	Middle Reservoir Area – Linked
11	TAC	R1 TAC		167.1125		167.1125	167.9	A	
12	Mutual FD Tac	RED		154.0700		154.0700	156.7	A	Mutual FD Tac
13	TAC	LOGGER2		151.5050	94.8	151.5050	94.8	A	
14	TAC	LOGGER1	DO NOT USE	151.9250		151.9250		A	DO NOT USE
15	TAC	TAN / MED	All DIV	155.3400		155.3400	156.7	A	Medical A/G
16	AIRGUARD	AIRGUARD	All DIV	168.6250		168.6250	110.9	A	AIRGUARD
Prepared By (Communications Unit)						Last Clone Name: 08/15/2023			
Brent Haberer COML / Brad Boyette COML-T						Communications Phone: 303-549-9831			

After hours Medical
719-207-1148

Use Human Repeaters when and where necessary.

Use only Channels assigned.

Controlled Unclassified Information//Basic

NFES 1330

INCIDENT RADIO COMMUNICATIONS PLAN

Incident Name: **Initial Attack**

Date/Time Prepared: **08/22/2023 @ 1800**

Operational Period Date/Time: **08/23/2023 0700 to 08/24/2023 0700**

Function		Channel Name/Trunked Radio System Talkgroup	Assignment	RX Freq	RX Tone/NAC	Controlled Unclassified Information//Basic		Remarks
Ch						TX Freq	Tx Tone/NAC	Mode A, D or
1	TAC	TAC 1		172.2250	107.2	172.2250	107.2	A
2	TAC	TAC 2		172.3750	107.2	172.3750	107.2	A
3	TAC	TAC 3		154.3025	107.2	154.3025	107.2	A
4	TAC	FNF WORK 1		168.1625		168.1625	167.9	A
5	CMD	CMD DIR	Ridge CMD DIR	167.2500	107.2	167.2500	107.2	A Ridge Command DIR
6	CMD	CMD RPT	Ridge CMD RPT	167.2500	107.2	162.2625	107.2	A Ridge Command RPT
7	FOREST DIR	FNF DIR	Forest DIR	173.1125		173.1125	123.0	A Forest Dir
8	FOREST RPT	DESERT	Forest RPT	173.1125		164.3750	107.2	A Forest RPT
9	A/G	FNF A/G	Forest A/G	169.1250		169.1250	167.9	A Forest A/G
10	A/G	RIDGE A/G	All DIV	173.8375		173.8375	123.0	A All DIV
11	A/G	AREA A/G	3 A/G52	168.3875		168.3875	123.0	A 3 A/G52
12	Mutual FD Tac	MAROON	MutualFD Pri	154.2800		154.2800	156.7	A MutualFD Pri
13	Mutual FD Tac	SCARLET	Mutual FD Sec	154.2950		154.2950	156.7	A Mutual FD Sec
14	Mutual FD Tac	RED	Mutual FD IA	154.0700		154.0700	156.7	A Mutual FD IA
15	Medic a/A/G	TAN	MT Med A/G	155.3400		155.3400	156.7	A MT Med A/G
16	AIRGUARD	AIRGUARD	All DIV	168.6250		168.6250	110.9	A AIRGUARD

Prepared By (Communications Unit): **Brad Boyette COML-T**

Last Clone Name: **08/15/2023**

Communications Phone: **303-549-9831**

After hours Medical
719-207-1148

Use Human Repeaters when and where necessary.

Use only Channels assigned.

Controlled Unclassified Information//Basic

NFES 1330

Finance Message

Please use the QR code on front page of IAP to submit your time to
2023.ridge.finance@firenet.gov

If you need assistance with electronic submission, there will be a Finance presence at briefing to assist those in need.

We now are accepting Time documents for THREE different fires:

RIDGE- P1QGT5

TIN SOLDIER-P1QGH4

DORIS POINT-P1QJ6J

Please note on CTR or Shift Ticket which fire you are working on.

Turn all time in through the firenet email above.

- FOR CTR SUBMISSION, PLEASE PUT CTR and RO# IN SUBJECT LINE OF EMAIL.
- FOR SHIFT TICKETS, PLEASE PUT ST AND RO# IN SUBJECT LINE OF EMAIL.
- IF TURNING IN FINAL CTR OR SHIFT TICKET, PLEASE ALSO PUT FINAL IN SUBJECT LINE.
- PLEASE MAKE EVERY EFFORT TO TURN IN ALL CTR'S AND SHIFT TICKETS DAILY.
- PLEASE INCLUDE YOUR RESOURCE ORDER # ON ALL DOCUMENTATION SUBMITTED, INCLUDING RECEIPTS.
- AUTO RESPONSE IS SET UP TO LET YOU KNOW THAT DOCUMENTS WERE RECEIVED.
- FOR DEMOB: Finance will email the Draft OF-288 or OF-286 to employee for their review and approval. If everything is correct, Finance will reply with FINAL OF-288/OF-286.
- CONTRACTORS: Be sure to get Performance Evaluation before demobilization.

FINANCE CHECK IN:

- PLEASE ENSURE THE BELOW DOCUMENTS ARE EMAILED TO FINANCE WITH RESOURCE ORDER NUMBER NOTED:

Agency	Overhead:	Contract Equipment/Contract	Cooperator:
Equipment/Crews: <ul style="list-style-type: none">• Manifest• Resource Order• CTR's	<ul style="list-style-type: none">• Resource Order• AD Hire Form (If an AD)• CTR's	Crews: <ul style="list-style-type: none">• Agreement/Manifest• Resource Order• Shift Ticket• Inspection Forms	<ul style="list-style-type: none">• Cooperative Agreement• Resource Order• Shift Ticket• Inspection Forms

DEMOB MESSAGE

TENTATIVE RELEASE FOR 8/23/23

Ridge Fire

C-4 CRWC CRW CAMP COLUMBIA BASIN
E-91 DZR3 YEAGER

Tin Soldier Fire

O-18 SMOD SUPPRESSION MODEL MI-HIF

TENTATIVE RELEASE FOR 8/24/23

Ridge Fire

E-97 ENG3 SOLOMON
E-105 COM1 KIT CONTRACTING
O-125 REAF MERCER, DERRICK L
O-126 REAF HEFLIN, JOSH CONNER
O-143 FOBS KEYS, MIKE
O-189 DIVS WILSON, GUY
O-221 TFLD CARTWRIGHT, BEAU

Tin Soldier Fire

O-27 WFA1 STEVEN SCHACHT

DEMOB IS LOCATED AT RIVER RANCH ICP

Resources approved for release will report to the Demob Unit to receive a checkout form. The crew leader or single resource will obtain required signatures after turning in any accountable equipment or supplies, vehicle inspections if required, completing any required documentation, and closing out with the Finance Section.

Dana Bagnoli, DMOB

385-422-3351

2023.ridge.demob@firenet.gov

VEHICLE INSPECTIONS:

WEED WASH:

Located at KOA Staging
251 Halfmoon Flats Rd., West Glacier, MT

To request a flight:

Submit your
information at least 72
hours in advance

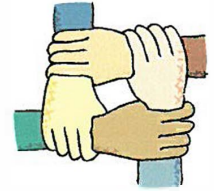
FLIGHT REQUEST FORM

Request Order #	
Name as shown on photo ID	
Date of Birth	
Cell Phone	
Male or Female	
Email Address	
Last Work Date	
Flight Date	
Departure Airport Code	
Arrival Airport Code	
Rental Location	
Need ride to airport?	





Human Resource Message



Roles of Human Resource Specialist

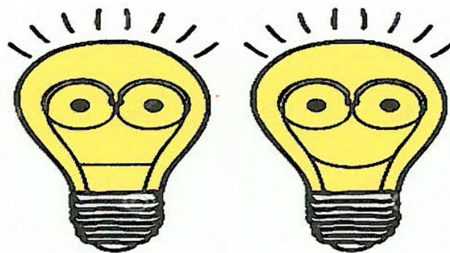
- Promote and facilitate a positive work environment.
- Help find answers to any question about an issue on this incident.
- Help find solutions to any problem on this incident.

Please come by the HR yurt, if you have questions, concerns, want to chat, or have an answer to the riddle and want your prize! If you prefer, you can call or text me on my cell phone listed below.

Today's Riddle: What word can be written forwards, backwards or upside down, and can still be read from left to right?

(REMEMBER – Please don't use the internet, use your smart brain instead!)

Ana G. Parada, HRSP, 505-270-3457



Think
Positive



Team 1 Welcome Training Message



Below are the QR Codes needed to register and check out of the training program. Follow instructions in each form carefully as there are required documents we must receive to complete your training package.

If you are missing any required forms give me a call, text, or email and I can email you electronic versions, just contact me!

EMIL PICCHI, TNSP

(650) 520-5102

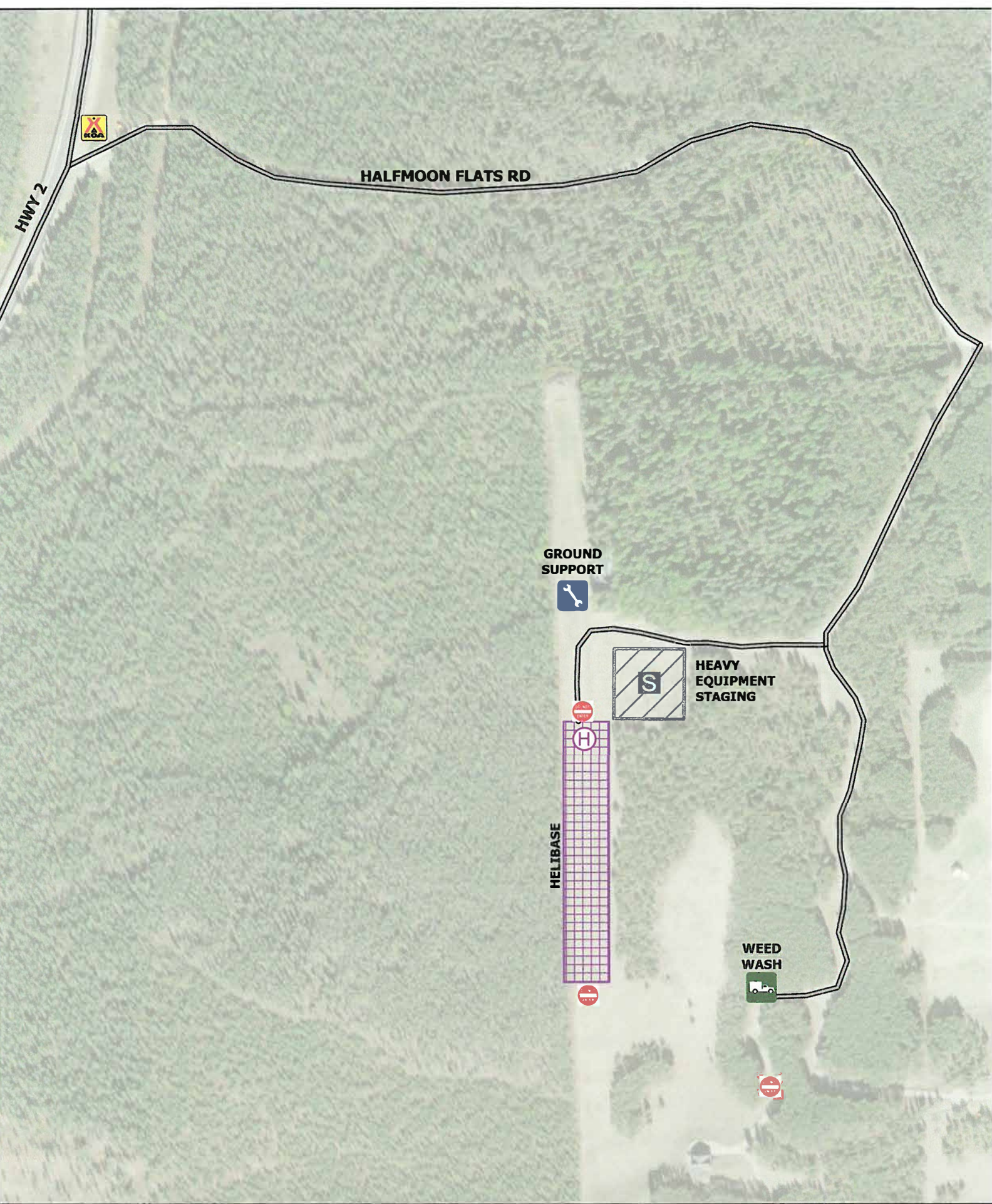
TNSPEP@GMAIL.COM

I am available by phone, text, or email from 0630-2130 daily.

Training Check in

Trainee Exit Interview





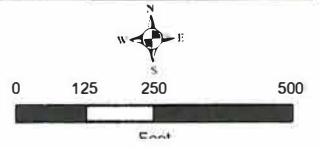
HALFMOON CAMP

Ridge

MT-FNF-000518



-  GROUND SUPPORT
-  HEAVY EQUIPMENT STAGING
-  HELIBASE
-  WEED WASH
-  DO NOT ENTER
-  HEAVY EQUIPMENT STAGING
-  HELIBASE



Medical Plan

1. Incident / Project Name				2. Operational Period			
Ridge, Doris Point, & Tin Soldier				Date/Time: 8/23/2023 (0700-2100)			
3. Ambulance Services							
Name	Location	Phone and Emergency Frequency			Advanced Life Support (ALS)		
		911			YES	NO	
Three Rivers EMS	31 7th Street W Columbia Falls, MT 59912	406-892-4244			X		
4. Air Ambulance Services							
Name	Phone	Type of Aircraft & Capability					
ALERT-1	911 866-302-9767	Bell 407 Critical Care					
Two Bear Air Resuce	911 406-758-5610	Bell 429 Rescue/ Hoist NVG					
350HQ	Kalispell Dispatch	H-125 Short-haul					
5. Hospitals							
Name Complete Address	Degrees Decimal Minutes	Travel Time From ICP		Phone	Helipad		Level of Care
		Air	Ground		Yes	No	
Logan Health Whitefish 1600 Hospital Way Whitefish, MT 59937	Lat: 48° 22.51' N	7 MINS	19 MINS	406-863-3500 Ask for ER	X		Level 4
	Long: 114° 19.56' W						
Logan Health Kalispell 350 Heritage Way Kalispell, MT 59901	Lat: 48° 22.84' N	10 MINS	33 MINS	406-752-5111 Ask for ER	X		Level 3
	Long: 114° 19.88' W						
St Patrick's Medical Center 500 W. Broadway Missoula, MT 59802	Lat: 113° 59.96' N	45 MINS	2.5 HRS	406-543-7271 Ask for ER	X		Level 2
	Long: 122° 19.39' W						
Harbor View Medical Center 325 9th Ave. Seattle, WA 98104	Lat: 47° 36.24' N	1.5 HRS	8.5 HRS	206-744-3140 Ask for ER	X		Level 1 Burn Center
	Long: 122° 19.39' W						
Branch I							
DIV A/M	EMS Responders & Capabilities:		Med Team 3: O-110: Robert Smith EMPF: 541-285-8890 (Lead) Med Team 4: O-109: James Fox EMPF: 253-222-8023 (Lead) AMBO 10: E-114: Timothy Gaston EMPF 406-471-0146				
	Equipment Available on Scene:		BLS/ALS Kits; 4x4 ALS Ambulance				
	Medical Emergency Channel:		Command A/G: TAN/MED				
	ETA for Ambulance to Scene:		All time approximate				
	Air:		25 min (minimum)				
	Ground:		Time Varies dependent on location				
	Approved Heli-spot		HS-15				
	Lat:		48° 22.894' N				
Long:		114° 00.283' W					
DIV R	EMS Responders & Capabilities:		Med Team 1: O-63: Ryan Gregor EMPF: 602-363-0770 (Lead) Med Team 6: O-208: Ayala Rahm EMPF: 520-403-8100 (Lead)				
	Equipment Available on Scene:		BLS/ALS Kits; UTV (Non pt transport capable)				
	Medical Emergency Channel:		Command A/G: TAN/MED				
	ETA for Ambulance to Scene:		All time approximate				
	Air:		25 min (minimum)				
	Ground:		Time Varies dependent on location				
	Approved Heli-spot		HS-8		HS-10		
	Lat:		48° 21.861' N		48° 22.362' N		
Long:		113° 54.227' W		113° 54.227' W			
DIV W	EMS Responders & Capabilities:		Med Team 2: E-129: Adam Osiadacz EMPF: 805-477-8568 (Lead) Med Team 7: O-96: Rodney Schmidt EMPF: 406-261-9541 (Lead)				
	Equipment Available on Scene:		BLS/ALS Kits; UTV (pt transport capable)				
	Medical Emergency Channel:		Command A/G: TAN/MED				
	ETA for Ambulance to Scene:		All time approximate				
	Air:		25 min (minimum)				
	Ground:		Time Varies dependent on location				
	Approved Heli-spot		HS-8				
	Lat:		48° 21.861' N				
Long:		113° 54.227' W					

DORIS POINT GROUP	EMS Responders & Capabilities:	Med Team 5: O-111: Michael Sowell EMPF: 502-593-1827 (Lead)		
	Equipment Available on Scene:	BLS/ALS Kits		
	Medical Emergency Channel:	Command		A/G: TAN/MED
	ETA for Ambulance to Scene:	All time approximate		
	Air:	25 min (minimum)		
	Ground:	Time Varies dependent on location		
	Approved Heli-spot	HS-22		
	Lat:	48° 18.990' N		
	Long:	113° 58.522' W		

Branch II

TIN SOLDIER GROUP	EMS Responders & Capabilities:	Med Team 8: O-209: Beione Mixon EMPF: 313-977-6319 (Lead) AMBO 9: E-58: Matt Roth EMPF: 406-214-9738 (Lead)		
	Equipment Available on Scene:	BLS/ALS Kits; 4x4 ALS Ambulance		
	Medical Emergency Channel:	Command		A/G: TAN/MED
	ETA for Ambulance to Scene:	All time approximate		
	Air:	30 min (minimum)		
	Ground:	Time Varies dependent on location		
	Approved Heli-spot	HS-52	HS-50	HS-20
	Lat:	48° 04.720' N	47° 57.413' N	47° 55.098' N
	Long:	113° 41.622' W	113° 33.496' W	113° 30.924' W

8. Prepared By (Medical Unit Leader)		Date	Reviewed by (Safety Officer)		Date
Cheyenne Lane MEDL(T) /s/ <i>Cheremine</i>		8/22/2023	Jim Burton SOF1 <i>[Signature]</i>		8/22/23

Ebr Night Time Medical Emergencies

Call through Command
With LOCATION and COMPLAINT
Or Call:
Will Kuamo MESC 480-799-7447
Brandie Smith MEDL 719-207-1148
Jim Burton SOF1 480-225-8864

MEDICAL PLAN (ICS 206 WF)

Controlled Unclassified Information//Basic

Medical Incident Report

FOR A NON-EMERGENCY INCIDENT, WORK THROUGH CHAIN OF COMMAND TO REPORT AND TRANSPORT INJURED PERSONNEL AS NECESSARY.

FOR A MEDICAL EMERGENCY: IDENTIFY ON-SCENE INCIDENT COMMANDER BY NAME AND POSITION AND ANNOUNCE "MEDICAL EMERGENCY" TO INITIATE RESPONSE FROM IMT COMMUNICATIONS/DISPATCH.

Use the following items to communicate situation to communications/dispatch.

1. CONTACT COMMUNICATIONS / DISPATCH (Verify correct frequency prior to starting report)

Ex: "Communications, Div. Alpha. Stand-by for Emergency Traffic."

2. INCIDENT STATUS: Provide incident summary (including number of patients) and command structure.

Ex: "Communications, I have a Red priority patient, unconscious, struck by a falling tree. Requesting air ambulance to Forest Road 1 at (Lat./Long.) This will be the Trout Meadow Medical, IC is TFLD Jones. EMT Smith is providing medical care."

Severity of Emergency / Transport Priority	<input type="checkbox"/> RED / PRIORITY 1 Life or limb threatening injury or illness. Evacuation need is IMMEDIATE <i>Ex: Unconscious, difficulty breathing, bleeding severely, 2^o – 3^o burns more than 4 palm sizes, heat stroke, disoriented.</i> <input type="checkbox"/> YELLOW / PRIORITY 2 Serious Injury or illness. Evacuation may be DELAYED if necessary. <i>Ex: Significant trauma, unable to walk, 2^o – 3^o burns not more than 1-3 palm sizes.</i> <input type="checkbox"/> GREEN / PRIORITY 3 Minor Injury or illness. Non-Emergency transport <i>Ex: Sprains, strains, minor heat-related illness.</i>	
Nature of Injury or Illness & Mechanism of Injury		Brief Summary of Injury or Illness <i>(Ex: Unconscious, Struck by Falling Tree)</i>
Evacuation Request		Air Ambulance / Short Haul/Hoist Ground Ambulance / Other
Patient Location		Descriptive Location & Lat. / Long. (WGS84)
Incident Name		Geographic Name + Medical <i>(Ex: Trout Meadow Medical)</i>
On-Scene Incident Commander		Name of on-scene IC of Incident within an Incident <i>(Ex: TFLD Jones)</i>
Patient Care		Name of Care Provider <i>(Ex: EMT Smith)</i>

3. INITIAL PATIENT ASSESSMENT: Complete this section for each patient as applicable (start with the most severe patient)

Patient Assessment: See IRPG PAGE 106

Treatment:

4. EVACUATION PLAN:

Evacuation Location (if different): (Descriptive Location (drop point, intersection, etc.) or Lat. / Long.) Patient's ETA to Evacuation Location:

Helispot / Extraction Site Size and Hazards:

5. ADDITIONAL RESOURCES / EQUIPMENT NEEDS:

Example: Paramedic/EMT, crews, immobilization devices, AED, oxygen, trauma bag, IV/fluid(s), splints, rope rescue, wheeled litter, HAZMAT, extrication

6. COMMUNICATIONS: Identify State Air/Ground EMS Frequencies and Hospital Contacts as applicable

Function	Channel Name/Number	Receive (RX)	Tone/NAC *	Transmit (TX)	Tone/NAC *
COMMAND					
AIR-TO-GRND					
TACTICAL					

7. CONTINGENCY: Considerations: If primary options fail, what actions can be implemented in conjunction with primary evacuation method? Be thinking ahead..

8. ADDITIONAL INFORMATION: Updates/Changes, etc.

REMEMBER: Confirm ETAs of resources ordered. Act according to your level of training. Be Alert. Keep Calm. Think Clearly. Act Decisively.

