

# INCIDENT ACTION PLAN

*Ridge Fire*

MT-FNF-000518 P1 QGT5 (O110)

*Doris Point Fire*

MT-FNF-000496 P1 QJ6J (O110)

*Tin Soldier Complex*

MT-FNF-000535 P1 QGH4 (O110)

## FRIDAY, August 25, 2023

Day Operational Period: 0700-2000

### FOR ALL ICP OR SPIKE CAMP EMERGENCIES

1. Utilize radio on Tac 1 (or on a Logistics radio within the ICP); or
2. By phone to Ridge Communications at (208) 510-8368; or
3. By activating the local 9-1-1 system



- IAPs
- Maps
- Check-in
- Blank CTRs
- Blank Shift Tickets
- Finance Email

### FIRE INFORMATION

Email: [2023.Ridge@firenet.gov](mailto:2023.Ridge@firenet.gov)

Phone Line: 406-998-6074

Inciweb: <https://inciweb.nwcg.gov/incident-information/mtfnf-ridge-fire>

Facebook: <https://www.facebook.com/ridge.fire.information>

YouTube: <https://www.youtube.com/@2023ridgefire>



SOUTHWEST AREA TEAM #1

Carl Schwope – Incident Commander

Jason Clawson – Deputy Incident Commander



# INCIDENT OBJECTIVES

ICS-202

INCIDENT NAME

**RIDGE AND DORIS POINT FIRES,  
TIN SOLDIER COMPLEX**

DATE  
PREPARED

8/24/2023

TIME  
PREPARED

2000

OPERATIONAL PERIOD (DATE/TIME)

**FRIDAY, August 25, 2023 DAY Operational Period: 0700 – 2000**

GENERAL CONTROL OBJECTIVES

## Leader's Intent

- Effectively implement a value-driven strategy that utilizes a mix of tactics (direct, indirect, and point-protection) when and where the probability of success is high, and the risk is commensurate with the identified values. Success is defined as safely achieving objectives with the least firefighter exposure necessary while enhancing stakeholder support and adhering to the core values of **Duty, Respect and Integrity**.

## Control Objectives

- Ridge Fire is a Full Suppression Fire. The Doris Point Fire/Tin Soldier Complex are Point Protection Fires.
- Minimize loss of our most Highly Valued Resources and Assets including private residences and infrastructure in the communities of Martin City, Hungry Horse, Coram, West Glacier, Hungry Horse Dam and other outlying private property, South Fork Abbot Creek, improvements, and infrastructure in and directly adjacent to the planning area. Additionally, minimize impacts to communication infrastructure on Desert Mountain and Firefighter Lookout.
- Unless human life is at risk, and to the extent possible, prevent retardant use in identified retardant avoidance areas.
- Provide initial attack for new wildland fire starts within the designated Temporary Flight Restriction areas. Coordinate with Kalispell Dispatch.
- Ridge Fire. Keep fire:
  - North of Forest Road 38
  - South of the Great Bear Wilderness
  - East of the communities along Highway 2
  - West of the Tiger River
- Doris Point and Tin Soldier Complex (Sullivan and Bruce Fires):
  - Keep fires west of the western side of Hungry Horse Reservoir (NFSR 895) and Meadow Creek (NFSR 2826) roads.
- Implement suppression repairs as identified in the approved Suppression Repair Plan.

## Management Objectives

- Manage risk to incident personnel by ensuring hazards are identified, assessed and where possible mitigated. Accept only necessary risk when values threatened warrant action and the probability of achieving objectives is high.
- Create and maintain a supportive, positive, and harassment free work environment in which people are treated with respect and dignity. Create a "no tolerance" atmosphere for harassment, alcohol or illegal drug use.
- Maintain and develop relationships with stakeholders, cooperators, community leaders, tribal representatives, elected officials, private landowners, and livestock permittees. Ensure timely and accurate information and sharing coordination with local authorities.
- Effectively manage incident costs through the selection and implementation of strategies and tactics that have a high probability of success in meeting objectives.

ORGANIZATION LIST (ICS 203)

MEDICAL PLAN (ICS 206 & 206WF)

WEATHER FORECAST

ASSIGNMENT LIST (ICS 204)

AIR OPS. SUMMARY (ICS 220)

FIRE BEHAVIOR FORECAST

COMMUNICATION PLAN (ICS 205)

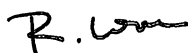
SAFETY MESSAGE

UNIT LOG

ICS 202

PREPARED BY (PLANNING SECTION CHIEF)

Bob Love



APPROVED BY (INCIDENT COMMANDER)

Carl Schwope



# ORGANIZATION ASSIGNMENT LIST

ICS-203

1. INCIDENT NAME

**RIDGE/DORIS POINT/TIN SOLDIER**

2. DATE PREPARED

8/24/2023

3. TIME PREPARED

1700 hours

4. OPERATIONAL PERIOD

DATE: 8/25/2023

TIME Day 0700-2000

## 5. INCIDENT COMMANDER AND STAFF

INCIDENT COMMANDER	Carl Schwoppe
DEPUTY INCIDENT COMMANDER	Jason Clawson
SAFETY OFFICER	Jim Burton
SAFETY OFFICER – FIELD	Rob Martin
LIAISON OFFICER	Pete Smith/Tom Vigil
LIAISON OFFICER	Troy Waskey (t)
INFORMATION OFFICER	Katy O'Hara / Celeste Prescott
INFORMATION OFFICER	Emery Johnson (t)
HUMAN RESOURCE SPECIALIST	Ana Parada

## 9. OPERATIONS SECTION

OPERATIONS SECTION CHIEF – FIELD	Ralph Lucas / Charles Ebert (t)
OPERATIONS SECTION CHIEF – PLANNING	Caleb Finch
OPERATIONS SECTION CHIEF – PLANNING	Lindsay McElfresh (t)
OPERATIONS SECTION CHIEF – PLANNING	Brandon Woodward (t)
STRATEGIC OPERATIONS CHIEF	Jayson Coil

## 6. AGENCY/ORGANIZATION REPRESENTATIVES

AGENCY	NAME
USFS – Flathead NF Agency Admin.	Rob Davies
USFS – Flathead NF Agency Admin.	MJ Crandall
USFS – Flathead NF Agency Admin.	Paul Donnellon
NPS – Glacier NP	David Roemer
USFS – Flathead NF IBA	Biddy Simet
Flathead County Sheriff	Brian Heino
Coram Experimental Forest	David Wright
CCC Agency Representative	Miguel Diaz

### a. BRANCH I

BRANCH DIRECTOR	Barry Green
DIVISION	A/M
DIVISION	R
DIVISION	W
GROUP	Doris Point
GROUP	Repair
DIVISION/GROUP	Larry Badger / Nathan Bradford (t)
DIVISION/GROUP	Ricky Romeo / Andre Dulac (t)
DIVISION/GROUP	Justin Wedo
DIVISION/GROUP	Guy Wilson / Tyler Richwine (t)
DIVISION/GROUP	Brendon McNeil

### b. BRANCH II

BRANCH DIRECTOR	TJ Lowder
GROUP	Tin Soldier
DIVISION	Aaron Livingston / A. Strobel (t)
GROUP	

## 7. PLANNING SECTION

PLANNING SECTION CHIEF	Bob Love
PLANNING SECTION CHIEF	Dana Bagnoli
RESOURCE UNIT LEADER	Glenda Womack / Mark McEntarffer
RESOURCE UNIT LEADER	Matt Kilford (t) / Brooke Wrye*
SITUATION UNIT LEADER	S. Bliss / C. Munday / D. Lucia
FIRE BEHAVIOR ANALYST	Stewart Turner / RJ Hannah (t)
LONG TERM ANALYST	
METEOROLOGIST	Trent Smith
DEMOBILIZATION UNIT LEADER	
INCIDENT TECHNOLOGY SUPPORT	Dave Kohler / Russell Virgilio
INCIDENT TECHNOLOGY SUPPORT	Gonzalo Hernandez / Mac Hetherington
DOCUMENTATION UNIT LEADER	LT Pratt
GISS	Rick Crawford / David Danker
GISS	Alex Heeren
TRAINING SPECIALIST	Emil Picchi*
STATUS CHECK IN	Matt Kilford
AIR RESOURCE ADVISOR	Margaret Key
STATUS/CHECK-IN RECORDER	Meghan Han (t)
LEAD RESOURCE ADVISOR	Elliot Meyer

### c. BRANCH III

BRANCH DIRECTOR	
GROUP	
DIVISION	
GROUP	
DIVISION	
DIVISION/GROUP	
DIVISION/GROUP	
DIVISION/GROUP	

### d. BRANCH

BRANCH DIRECTOR	
GROUP	
GROUP	
GROUP	
BRANCH DIRECTOR	
GROUP	

### e. BRANCH

## 8. LOGISTICS SECTION

LOGISTICS SECTION CHIEF	Sharon Taube / Ray Kingston*
LOGISTICS SECTION CHIEF	Ed Freed / Dean McAllister

### a. SUPPORT BRANCH

SUPPLY UNIT LEADER	Karen Abeita / Carlos Santillana (t)
SUPPLY UNIT LEADER	
FACILITIES UNIT LEADER	Vonnie Young
GROUND SUPPORT UNIT LEADER	Robert Gill
GROUND SUPPORT UNIT LEADER	Clyde Morace
ORDERING MANAGER	Lorean Hennings
RECEIVING MANAGER	Paul Curtis / Chris Bolen (t)

### b. SERVICE BRANCH

COMMUNICATIONS UNIT LEADER	Brent Haberer
COMMUNICATION TECHNICIAN	Brad Boyette
SECURITY MANAGER	Don Simon
FOOD UNIT LEADER	

## 10. AIR BRANCH

AIR OPERATIONS BRANCH DIR.	Sean Cox
AIR SUPPORT GROUP SUPERVISOR	Brian Knapp
AIR TACTICAL GROUP SUPV	R1 pool

## 11. FINANCE SECTION

FINANCE SECTION CHIEF	Jamie Wade / Darla Quick
TIME UNIT LEADER	Karen Martinez / Barbara Hogg
COST UNIT LEADER	Scott Turner / Natalie Stewart (t)
COMPENSATION/CLAIMS UNIT LDR	Merlinda Valdez* / Gloria McCabe
COMPENSATION/CLAIMS UNIT LDR	Jennifer Hebbeler (t)
PROCUREMENT UNIT LEADER	Stephanie Archuleta
PERSONNEL TIME RECORDER	Angelita Whatley / Linda Aspan*
EQUIPMENT TIME RECORDER	Beth Hartwood / Kirstin Donelson
EQUIPMENT TIME RECORDER	Amy Callahan* / Siria Benally*
EQUIPMENT TIME RECORDER	Stewart Williams

## 12. MEDICAL SECTION

MEDICAL SECTION CHIEF	Bill Kuamo'o
MEDL – PLANNING	Brandie Smith
MEDL – ICP	Cheyenne Lane (t)
MEDL – FIELD	Mike Short (t)

PREPARED BY (PSC) Bob Love



\* Virtual Position



# Ridge/Doris Point/Tin Soldier Fire Weather Forecast



**FORECAST NO:** 17

**PREDICTION FOR:** Friday

**SHIFT DATE:** 08/25/23

**FORECAST ISSUED:** 08/24/23 at 1930 MDT

**NAMES OF FIRES:** Ridge, Doris Point, Tin Soldier

**UNIT:** MT-Flathead National Forest

**SIGNED:** Trent Smith- **Incident Meteorologist**

text/email obs: 406-360-6330/trent.smith@noaa.gov

**WEATHER DISCUSSION:** The ridge of high pressure continues to build over the region for the next several days. A line of showers and potential thunderstorms is expected to pass through the fire location late this afternoon through the evening. These storms will be capable of light rain and gusty erratic winds. After the passage of this feature, the ridge becomes the dominant feature with warming and drying.

**TODAY:**

**SKY/WEATHER:** Mostly sunny becoming mostly cloudy in the afternoon. Slight chance of showers and thunderstorms in the afternoon.

**Max Temperature:** 81-86 lower elevations (below 4500 ft) and 71-76 mid-slopes to ridges.

**Min RH:** 27-32% lower elevations (below 4500 ft) and 35-40% mid-slopes to ridges

**20 ft WINDS: Slope/Valley** –Southeast 3-8 mph.

**Doris/Ridge Ridgetop** – Southeast 5-10 mph with afternoon gusts to 15 mph.

**Tin Soldier Ridgetop** - East Southeast 7-12 mph with afternoon gusts to 20 mph.

**LAL:** 2                                      **Chance of Wetting Rain (0.10”):** 5%                                      **HAINES INDEX:** 3 (Low)

**TONIGHT:**

**SKY/WEATHER:** Mostly cloudy becoming mostly clear after midnight. Scattered rain showers and slight chance of thunderstorms in the evening.

**Min Temperature:** 48-53.

**Max RH:** 85-90% lower elevations (below 4500 ft) and 55-60% mid-slopes to ridges. .

**20 ft WINDS: Slope/Valley** – Southeast 3-8 mph, becoming terrain 2-6 mph after midnight.

**Ridgetop** – Southeast 5-10 mph turning southwest 3-8 mph after midnight.

**LAL:** 2                                      **Chance of Wetting Rain (0.10”):** 10%

**Outlook for SATURDAY:**

**SKY/WEATHER:** Mostly sunny.

**Max Temperature:** 82-88 lower elevations (below 4500 ft) and 73-78 mid-slopes to ridges.

**Min RH:** 27-32% lower elevations (below 4500 ft) and 39-44% mid-slopes to ridges

**20 ft WINDS: Slope/Valley** – Terrain 3-8 mph.

**Ridgetop** – Southwest 3-8 mph becoming west 5-10 gust to 15 mph in the afternoon.

**Extended Forecast Discussion:** The ridge of high pressure will continue to be the dominant feature through the first part of next week. Temperatures will be around 15 degrees above normal for this time of year as minimum humidity readings drop into the 20 percent range. Thermal belts are anticipated to develop each night. A strong cold front is still expected late Tuesday into Wednesday.

8/22/2023 observations thru 1900	Min Temp	Max RH	Max Temp	Min RH	Peak Wind	Precipitation
Spotted Bear Lookout (7202')	43	65	63	32	23 mph	0.00
IRAWS46-Desert Mtn (6360')	42	73	62	42	17 mph	0.00
IRAWS45-Firefighter Mtn (5683')	47	60	67	35	14 mph	0.00
Spotted Bear RS (3725')	37	99	75	23	19 mph	0.00
West Glacier RAWS (3165')	39	100	77	30	10 mph	0.00
Hungry Horse RAWS (3123')	40	98	77	27	15 mph	0.00

# FIRE BEHAVIOR FORECAST

<b>FORECAST NUMBER:</b> 17	<b>TYPE OF FIRE:</b> Wildland Fire
<b>FIRE NAME:</b> Tin Soldier/Ridge and Doris Point	<b>OPERATIONAL PERIOD:</b> Day Shift, August 25, 2023
<b>DATE ISSUED:</b> August 24, 2023	<b>TIME ISSUED:</b> 2000
<b>UNIT:</b> Flathead National Forest	<b>SIGNED:</b> Stewart Turner, FBAN

## INPUTS

**WEATHER SUMMARY:** Mostly sunny becoming mostly cloudy in the afternoon. Slight chance of showers and thunderstorms in the afternoon.

**MAX TEMP:** 81-86 lower elevations (below 5500 ft) and 71-76 mid-slopes to ridges.

**Humidity:** 27-32% lower elevations (below 4500 ft) and 35-40% mid-slopes to ridge

**20 FOOT WINDS: Valleys/Lower Slope:** Southeast 3-8 mph.

Doris/Ridge Ridgetop – Southeast 5-10 mph with afternoon gusts to 15 mph.

Tin Soldier Ridgetop – East Southeast 7-12 mph with afternoon gusts to 20 mph

**Haines 3 (Low) LAL 2**

**FUELS:** The major fuel types, found in and around the fire area include compact timber stands, timber, understory, brush and heavy down and dead.

**Ignition Receptiveness: ERC:** 23 well below the 90<sup>th</sup> percentile.

**Probability of Ignition:** 53% **Spotting distance:** Ridge top timber .1-mile, brush .2-mile

**Dryness:** Dead and down fuel moistures: **1 hour** – 6% **10 hour**-18%, **100 hour** -19%, **1000 hour**-18%.

## OUTPUTS

### FIRE BEHAVIOR

#### GENERAL:

As the larger fuels dry expect to see more smoldering. No perimeter growth is expected.

#### SPECIFIC:

**Sullivan Fire:** Smoldering fire behavior.

**Bruce Fire:** Some of the sheltered and protected heavies will smolder.

**Ridge Fire:** No growth is expected. Low fire behavior.

**Doris Point Fire:** Smoldering will continue in the heavy fuels. Low fire behavior with little growth.

#### AIR OPERATIONS:

Afternoon thunderstorms may limit air operations.

## SAFETY

*LCES is a self-triggering mechanism. Lookouts assess, and reassess, the fire environment and Communicate threats of safety to firefighters. Firefighters use Escape routes to move to Safety zones.*

<b>DIVISION ASSIGNMENT LIST</b> ICS-204				1. BRANCH <b>1</b>		2. DIVISION/GROUP <b>A / M</b>				
3. INCIDENT NAME <b>RIDGE</b>				4. OPERATIONAL PERIOD <b>Date: 08/25/2023</b> <b>Time: 0700-2000</b>						
<b>OPERATIONS PERSONNEL</b>										
PLANNING OPS: Caleb Finch / Lindsay McElfresh (T) / Brandon Woodward (T) FIELD OPS: Ralph Lucas / Charles Ebert (T) DIVISION/GROUP SUPERVISOR: Larry Badger / Nathan Bradford (T) (8/26)				BRANCH DIRECTOR: Barry Green  AIR OPERATIONS BRANCH DIRECTOR: Sean Cox						
<b>RESOURCES ASSIGNED THIS PERIOD</b>										
STRIKE TEAM/TASK FORCE/RESOURCE DESIGNATOR			Last Shift	LEADER	NUMBER PERSONS	DROP OFF POINT/TIME	PICK UP POINT/TIME			
TFLD (T)		O-101	8/25	Edward Rablin	1	River Ranch ICP / 0700	River Ranch ICP / 2000			
TFLD (T)	*	O-184.82	9/5	Dana Johnston	1	River Ranch ICP / 0700	River Ranch ICP / 2000			
TFLD (T)		A-15.10		Mark Troxel	1	River Ranch ICP / 0700	River Ranch ICP / 2000			
TFLD (T)		A-15.2		Ben O'Connor	1	River Ranch ICP / 0700	River Ranch ICP / 2000			
HC2 MARLETTE PEAK		C-9	8/27	Jason Foster	23	River Ranch ICP / 0700	River Ranch ICP / 2000			
HC2 R&R CONTRACTING	*	C-30	8/30	Christobal Rocha	20	River Ranch ICP / 0700	River Ranch ICP / 2000			
HC2 IRON MOUNTAIN 6		C-19	8/29	Israel Santana	20	River Ranch ICP / 0700	River Ranch ICP / 2000			
HC2 WEST COAST 33		C-33	8/30	Luis Gonzalez	20	River Ranch ICP / 0700	River Ranch ICP / 2000			
ENG3 MISSOULA CITY		E-96	8/25	Jeremy Williams	3	River Ranch ICP / 0700	River Ranch ICP / 2000			
ENG3 LL MEADOW WILDFIRE		E-109	8/25	Reed Gracie	3	River Ranch ICP / 0700	River Ranch ICP / 2000			
ENG6 EAST MISSOULA	*	E-94	8/25	Tanner Ferguson	2	River Ranch ICP / 0700	River Ranch ICP / 2000			
ENG6 TORCH FIRE	*	E-144	9/5	Stephen Tolman	3	River Ranch ICP / 0700	River Ranch ICP / 2000			
SOFR		O-128	8/26	Matthew Martin	1	River Ranch ICP / 0700	River Ranch ICP / 2000			
MED TEAM 3		O-110	9/3	Robert Smith	2	River Ranch ICP / 0700	River Ranch ICP / 2000			
MED TEAM 4		O-109	9/2	James Fox	2	River Ranch ICP / 0700	River Ranch ICP / 2000			
AMBU 10 KALISPELL		E-114	8/25	Jessica Kinzer	2	River Ranch ICP / 0700	River Ranch ICP / 2000			
<b>CONTROL OPERATIONS:</b> Task: Secure and monitor fireline as appropriate and safe to do so from the A/W division break to M/R division break. Begin backhaul of water handling equipment, suppression related supplies and trash where fire line is secure enough to do so. Purpose: Keep fire within current foot print and account for and remove any unnecessary equipment from fire area. End State: Fire remains contained to current perimeter and all accountable property, supplies, and trash is removed and returned to Supply Unit.										
<b>SPECIAL INSTRUCTIONS:</b> <ul style="list-style-type: none"> <li>• Before doing work in the Coram Experimental Forest, coordinate with READ David Wright (406) 531-0980.</li> <li>• READs and REAFs will be operating in multiple divisions. They will check in and out with DIVS.</li> <li>• * Denotes resources with IA responsibilities.</li> </ul>										
FUNCTION		FREQUENCY Rx	FREQUENCY Tx	CHAN	FUNCTION		FREQUENCY Rx	FREQUENCY Tx	CHAN.	
COMMAND	CMD C3	170.4250 / 131.8	168.0750 / 131.8	7	AIR COMMAND	A/G PRI	173.8375	173.8375 / 123.0	13	
FOREST	RPT	173.1125	164.3750 / 107.2	10						
LOGGER 2		151.5050 / 94.8	151.5050 / 94.8	12	MEDEVAC A/G	MED A/G	155.3400	154.3400 / 156.7	15	
TACTICAL	TAC 3	168.6000 / 131.8	168.6000 / 131.8	3	AIRGUARD	AIRGUARD	168.6250	168.6250 / 110.9	16	
PREPARED BY (RESOURCE UNIT LEADER) Mark McEntarffer				APPROVED BY (PLANNING SECTION CHIEF) Dana Bagnoli <i>Dana Bagnoli PSC</i>				DATE 08/24/2023	TIME 2100	

<b>DIVISION ASSIGNMENT LIST</b> ICS-204				1. BRANCH <b>1</b>		2. DIVISION/GROUP <b>R</b>			
3. INCIDENT NAME <b>RIDGE</b>				4. OPERATIONAL PERIOD <b>Date: 08/25/2023</b> <b>Time: 0700-2000</b>					
<b>OPERATIONS PERSONNEL</b>									
PLANNING OPS: Caleb Finch / Lindsay McElfresh (T) / Brandon Woodward (T) FIELD OPS: Ralph Lucas / Charles Ebert (T) DIVISION/GROUP SUPERVISOR: Ricky Romero / Andre Dulac (T) (O-222)(9/4)				BRANCH DIRECTOR: Barry Green  AIR OPERATIONS BRANCH DIRECTOR: Sean Cox					
<b>RESOURCES ASSIGNED THIS PERIOD</b>									
STRIKE TEAM/TASK FORCE/RESOURCE DESIGNATOR			Last Shift	LEADER	NUMBER PERSONS	DROP OFF POINT/TIME	PICK UP POINT/TIME		
HC1 TATANKA	C-26	8/30	David Zortman	18	River Ranch ICP / 0700	River Ranch ICP / 2000			
TFLD	O-138	8/27	Bode Mecham	1	River Ranch ICP / 0700	River Ranch ICP / 2000			
TFLD (T)	O-185	9/1	Patrick Zimmer	1	River Ranch ICP / 0700	River Ranch ICP / 2000			
TFLD (T)	O-184.77	9/5	Brett Idol	1	River Ranch ICP / 0700	River Ranch ICP / 2000			
HC2 WEST COAST 31	C-31	8/30	Julio Olmos	20	River Ranch ICP / 0700	River Ranch ICP / 2000			
ENG3 CASTLE MOUNTAIN	E-111	8/25	John Tiller	3	River Ranch ICP / 0700	River Ranch ICP / 2000			
ENG3 SHERIDAN	E-110	8/25	Bob Sheridan	4	River Ranch ICP / 0700	River Ranch ICP / 2000			
HEQB (T)	O-190	8/28	Kyler Knapp	1	River Ranch ICP / 0700	River Ranch ICP / 2000			
HEQB (T)	O-187	9/1	Drew Czyscon	1	River Ranch ICP / 0700	River Ranch ICP / 2000			
HEQB (T)	O-188	9/2	Zach Emerson	1	River Ranch ICP / 0700	River Ranch ICP / 2000			
LOGL SLACK	E-34	9/1	Jamie Slack	1	River Ranch ICP / 0700	River Ranch ICP / 2000			
LOGL SIDERIUS	E-35	9/1	Brandon Clouse	1	River Ranch ICP / 0700	River Ranch ICP / 2000			
LOGT MATHENY LINE	E-132	8/30	Timothy Matheny	1	River Ranch ICP / 0700	River Ranch ICP / 2000			
LOGT RONKOSKI TRUCKING	E-133	8/30	Ron Koski	1	River Ranch ICP / 0700	River Ranch ICP / 2000			
SKD TAMARACK TIMBER	E-126	8/27	Rob Miller	2	River Ranch ICP / 0700	River Ranch ICP / 2000			
WTS2 WALKING Y4	E-27	8/31	Al Hensley	1	River Ranch ICP / 0700	River Ranch ICP / 2000			
SOFR	O-157	8/30	Troy Maguire	1	River Ranch ICP / 0700	River Ranch ICP / 2000			
MED TEAM 6	O-208	9/2	Ayala Rahm	3	River Ranch ICP / 0700	River Ranch ICP / 2000			
MED TEAM 1	O-63	8/28	Ryan Gregor	2	River Ranch ICP / 0700	River Ranch ICP / 2000			
<b>CONTROL OPERATIONS:</b> Task: Scout for potential direct or indirect fireline locations. From DP 8 to the R/W division break, secure and monitor fire including any spot fires outside of control lines. Purpose: To prevent fire from crossing established control lines and potentially impacting values at risk. End State: New fire line is constructed to achieve a high probability of success.									
<b>SPECIAL INSTRUCTIONS:</b> • Before doing work in the Coram Experimental Forest, coordinate with READ David Wright (406) 531-0980. • READs and REAFs will be operating in multiple divisions. They will check in and out with DIVS.									
FUNCTION		FREQUENCY Rx / TONE	FREQUENCY Tx / TONE	CHAN	FUNCTION		FREQUENCY Rx / TONE	FREQUENCY Tx / TONE	CHAN.
COMMAND	CMD C3	170.4250 / 131.8	168.0750 / 131.8	7	AIR COMMAND	A/G PRI	173.8375	173.8375	13
FOREST	RPT	173.1125	164.3750 / 107.2	10	MEDEVAC A/G	MED A/G	155.3400	155.3400 / 156.7	15
LOGGER 2		151.5050 / 94.8	151.5050 / 94.8	12	AIRGUARD	AIRGUARD	168.6250	168.6250 / 110.9	16
TACTICAL	TAC 4	166.7250 / 131.8	166.7250 / 131.8	4					
PREPARED BY (RESOURCE UNIT LEADER) Mark McEntarffer				APPROVED BY (PLANNING SECTION CHIEF) Dana Bagnoli <i>Dana Bagnoli PSC</i>			DATE 08/24/2023	TIME 2100	

<b>DIVISION ASSIGNMENT LIST</b> ICS-204				1. BRANCH <b>1</b>	2. DIVISION/GROUP <b>W</b>					
3. INCIDENT NAME <b>RIDGE</b>				4. OPERATIONAL PERIOD <b>Date: 08/25/2023</b> <b>Time: 0700-2000</b>						
OPERATIONS PERSONNEL										
PLANNING OPS: Caleb Finch / Lindsay McElfresh (T) / Brandon Woodward (T)			BRANCH DIRECTOR: Barry Green							
FIELD OPS: Ralph Lucas / Charles Ebert (T)			AIR OPERATIONS BRANCH DIRECTOR: Sean Cox							
DIVISION/GROUP SUPERVISOR: Justin Wedo										
RESOURCES ASSIGNED THIS PERIOD										
STRIKE TEAM/TASK FORCE/RESOURCE DESIGNATOR		Last Shift	LEADER	NUMBER PERSONS	DROP OFF POINT/TIME	PICK UP POINT/TIME				
HC2IA MIDEWIN		C-16	8/25	Jerry Hoffman	19	River Ranch ICP / 0700	River Ranch ICP / 2000			
TFLD		C-22.24	8/26	Cody Forgea	1	River Ranch ICP / 0700	River Ranch ICP / 2000			
TFLD (T)		C-22.10	8/26	Danielle Goodson	1	River Ranch ICP / 0700	River Ranch ICP / 2000			
HC2 IRON MONTAIN		C-18	8/29	Jesse Chiprez	20	River Ranch ICP / 0700	River Ranch ICP / 2000			
HC2 WEST COAST 32		C-32	8/30	Benjamin Martinez	18	River Ranch ICP / 0700	River Ranch ICP / 2000			
ENG6 BIGFORK 382		E-60	8/28	Sean Reffner	4	River Ranch ICP / 0700	River Ranch ICP / 2000			
SOF2		O-206	9/3	Kim Lemke	1	River Ranch ICP / 0700	River Ranch ICP / 2000			
MED TEAM 7		O-96	8/31	Rodney Schmidt	2	River Ranch ICP / 0700	River Ranch ICP / 2000			
MED TEAM 2		E-129	9/6	Adam Osiadacz	2	River Ranch ICP / 0700	River Ranch ICP / 2000			
<b>CONTROL OPERATIONS:</b>										
Task: Secure and monitor fireline as appropriate from the W/R division break to the uncontrolled fires edge south of Helispot 8. Begin backhaul of water handling equipment, suppression related supplies, and trash where fireline is secure enough to do so.										
Purpose: Keep fire within current footprint and account for and remove any unnecessary equipment from fire area.										
End State: Fire remains contained to current perimeter and all accountable property, supplies, and trash is removed and returned to Supply Unit.										
<b>SPECIAL INSTRUCTIONS:</b>										
<ul style="list-style-type: none"> <li>Before doing work in the Coram Experimental Forest, coordinate with READ David Wright (406) 531-0980.</li> <li>READs and REAFs will be operating in multiple divisions. They will check in and out with DIVS.</li> </ul>										
FUNCTION		FREQUENCY Rx / TONE	FREQUENCY Tx / TONE	CHAN	FUNCTION		FREQUENCY Rx / TONE	FREQUENCY Tx / TONE	CHAN.	
COMMAND	CMD C3	170.4250 / 131.8	168.0750 / 131.8	7	AIR COMMAND	A/G PRI	173.8375	173.8375	13	
FOREST	RPT	173.1125	164.3750 / 107.2	10						
LOGGER 2		151.5050 / 94.8	151.5050 / 94.8	12	MEDEVAC A/G	MED A/G	155.3400	155.3400 / 156.7	15	
TACTICAL	TAC 5	166.7750 / 131.8	166.7750 / 131.8	5	AIRGUARD	AIRGUARD	168.6250	168.6250 / 110.9	16	
PREPARED BY (RESOURCE UNIT LEADER) Mark McEntarffer				APPROVED BY (PLANNING SECTION CHIEF) Dana Bagnoli <i>Dana Bagnoli BCL</i>			DATE 08/24/2023		TIME 2100	





# DIVISION ASSIGNMENT LIST

ICS-204

1. BRANCH

1

2. DIVISION/GROUP

Repair Group

3. INCIDENT NAME

RIDGE

4. OPERATIONAL PERIOD

Date: 08/25/2023

Time: 0700-2000

### OPERATIONS PERSONNEL

PLANNING OPS: Caleb Finch / Lindsay McElfresh (T) / Brandon Woodward (T)

BRANCH DIRECTOR: Barry Green

FIELD OPS: Ralph Lucas / Charles Ebert (T)

AIR OPERATIONS BRANCH DIRECTOR: Sean Cox

DIVISION/GROUP SUPERVISOR: Brendon McNeil

### RESOURCES ASSIGNED THIS PERIOD

STRIKE TEAM/TASK FORCE/RESOURCE DESIGNATOR

Last Shift

LEADER

NUMBER PERSONS

DROP OFF POINT/TIME

PICK UP POINT/TIME

TFLD	O-221	8/27	Beau Cartwright	1	River Ranch ICP / 0700	River Ranch ICP / 2000
TFLD (T)	O-224	9/5	Mark Wahlberg	1	River Ranch ICP / 0700	River Ranch ICP / 2000
DOZ2 SIDERIUS	E-1	9/1	Dan Siderius	1	River Ranch ICP / 0700	River Ranch ICP / 2000
SKG3 ROCKY MOUNTAIN	E-67	9/5	Devin Meyer	1	River Ranch ICP / 0700	River Ranch ICP / 2000

**CONTROL OPERATIONS:**  
 Task: Assess fire suppression repair needs and implement suppression repair in accordance with suppression repair plan.  
 Purpose: Mitigate suppression impacts.  
 End State: Fire suppression repair needs are identified and suppression repair is being implemented.

**SPECIAL INSTRUCTIONS:**  
 • READS and REAFs will be operating in multiple divisions. They will check in and out with DIVS.

FUNCTION		FREQUENCY Rx / TONE	FREQUENCY Tx / TONE	CHAN	FUNCTION		FREQUENCY Rx / TONE	FREQUENCY Tx / TONE	CHAN.
COMMAND	CMD C3	170.4250 / 131.8	168.0750 / 131.8	7	AIR COMMAND	A/G PRI	173.8375	173.8375	13
FOREST	RPT	173.1125	164.3750 / 107.2	10					
LOGGER 2		151.5050 / 94.8	151.5050 / 94.8	12	MEDEVAC A/G	MED A/G	155.3400	155.3400 / 156.7	15
TACTICAL	TAC 5	168.2000 / 131.8	168.2000 / 131.8	5	AIRGUARD	AIRGUARD	168.6250	168.6250 / 110.9	16

PREPARED BY (RESOURCE UNIT LEADER)	APPROVED BY (PLANNING SECTION CHIEF)	DATE	TIME
Mark McEntarffer	Dana Bagnoli <i>Dana Bagnoli PSC</i>	08/24/2023	2100

<b>DIVISION ASSIGNMENT LIST</b> ICS-204				1. BRANCH <b>2</b>		2. DIVISION/GROUP <b>TIN SOLDIER</b>			
3. INCIDENT NAME <b>TIN SOLDIER</b>				4. OPERATIONAL PERIOD <b>Date: 08/25/2023</b> <b>Time: 0700-2000</b>					
<b>OPERATIONS PERSONNEL</b>									
PLANNING OPS: Caleb Finch / Lindsay McElfresh (T) / Brandon Woodward (T) FIELD OPS: Ralph Lucas / Charles Ebert (T) DIVISION/GROUP SUPERVISOR: Aaron Livingston / Aaron Strobel (T)				BRANCH DIRECTOR: T.J Lowder  AIR OPERATIONS BRANCH DIRECTOR: Sean Cox					
<b>RESOURCES ASSIGNED THIS PERIOD</b>									
STRIKE TEAM/TASK FORCE/RESOURCE DESIGNATOR		Last Shift	LEADER	NUMBER PERSONS	DROP OFF POINT/TIME	PICK UP POINT/TIME			
HC1 LOLO	C-22	8/26	Shawn Faiella	24	Spotted Bear / 0700	Spotted Bear / 2000			
WFM SPOTTED BEAR *			Scott Reid	9	Spotted Bear / 0700	Spotted Bear / 2000			
TFLD (TASK FORCE 1)	O-32	8/25	Jamie Wood	1	Spotted Bear / 0700	Spotted Bear / 2000			
TFLD (T)	O-186	9/2	Coyde Fickle	1	Spotted Bear / 0700	Spotted Bear / 2000			
HC2IA ILLINOIS	C-2	8/26	Rich Lewis	20	Spotted Bear / 0700	Spotted Bear / 2000			
SMOD GREAT LAKES *		9/2	Chris Loomis	18	Spotted Bear / 0700	Spotted Bear / 2000			
SMOD MI-HIF *		8/27	Declan Shalley	6	Spotted Bear / 0700	Spotted Bear / 2000			
ENG4 BOSKET	E-15	9/1	Steve Bailey	3	Spotted Bear / 0700	Spotted Bear / 2000			
ENG6 BIG STATE	E-145	9/6	Colton Neff	3	Spotted Bear / 0700	Spotted Bear / 2000			
WTS2 CONLEY	E-14	8/26	Owen Conley	1	Spotted Bear / 0700	Spotted Bear / 2000			
TFLD (TASK FORCE 2) *	O-36	8/26	Ryle Benke	1	Spotted Bear / 0700	Spotted Bear / 2000			
HC2 PNW FIRE	C-20	8/28	Miguel Esquibel	20	River Ranch ICP / 0700	River Ranch ICP / 2000			
HETF TOUGH GO	E-50	9/2	Russ Miller	6	Spotted Bear / 0700	Spotted Bear / 2000			
SOF2	O-97	8/27	Cougan Carothers	1	Spotted Bear / 0700	Spotted Bear / 2000			
MED TEAM 8	O-209	9/1	Bejone Mixon	2	Spotted Bear / 0700	Spotted Bear / 2000			
AMBU 9	E-58	8/28	Amanda Macarthur	2	Spotted Bear / 0700	Spotted Bear / 2000			
<b>CONTROL OPERATIONS:</b> Task: Assess point protection plans. Improve contingency lines and capitalize on opportunities to minimize fire spread near identified values at risk. Purpose: Prevent loss or damage to values. End State: Fire does not negatively affect identified values at risk.									
<b>SPECIAL INSTRUCTIONS:</b> • * Denotes resources with IA responsibilities. • READS and REAFs will be operating in multiple divisions. They will check in and out with DIVS.									
FUNCTION		FREQUENCY Rx / TONE	FREQUENCY Tx / TONE	CHAN	FUNCTION		FREQUENCY Rx / TONE	FREQUENCY Tx / TONE	CHAN.
COMMAND	CMD S	173.1875 / 167.9	164.3875 / 167.9	9	AIR COMMAND	A/G PRI	169.2625	169.2625 / 167.9	14
COMMAND	CMD N	168.1125 / 167.9	168.2875 / 167.9	8					
TACTICAL	TAC 1	168.0500 / 167.9	168.0500 / 167.9	1	MEDEVAC A/G	MED A/G	155.3400	155.3400 / 156.7	15
FOREST	RPT	173.1125	164.3750 / 114.8	10	AIRGUARD	AIRGUARD	168.6250	168.6250 / 110.9	16
PREPARED BY (RESOURCE UNIT LEADER) Mark McEntarffer				APPROVED BY (PLANNING SECTION CHIEF) Dana Bagnoli <i>Dana Bagnoli BSL</i>			DATE 08/24/2023	TIME 2100	

Controlled Unclassified Information/Basic

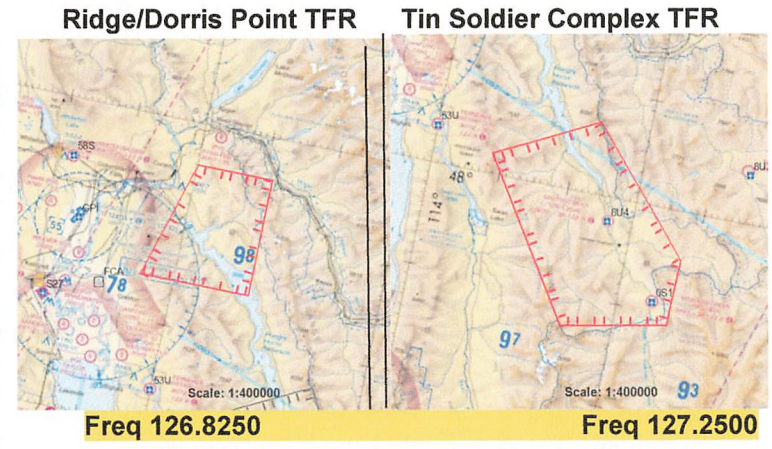
<b>AIR OPERATIONS SUMMARY</b> Ridge/Dorris Point/ Tin Soldier Complex	Prepared By: Sean Cox AOBD	Prepared: 08/24/2023	Prepared Time: 1700 hrs.		
	<b>2. OPERATIONAL PERIOD</b> 08/25/2023	<b>START TIME:</b> 0700	<b>END TIME:</b> 2000	<b>SUNRISE:</b> 0643	<b>SUNSET:</b> 2030

ALL AIRCRAFT ARE ON PREPOSITION AND ARE NOT ASSIGNED TO ANY ONE FIRE. AS SUCH, IF THERE IS A NEED FOR ROTER WING AIRCRAFT IN THE ABSENCE OF AERIAL SUPERVISION, ORDER AIRCRAFT THROUGH AIR SUPPORT.

DO YOUR PART FOR AVIATION MISSION SUCCESS. A NUMBER OF FACTORS CAN CONTRIBUTE TO DELAYS IN AIRCRAFT ON SCENE TIMES. SOME CONTRIBUTORS TO DELAYS INCLUDE RISK ASSESSMENTS, WEATHER, UNCLEAR INTENT, OR HIGHER LOCALIZED, REGIONAL, OR NATIONAL PRIORITIES TO NAME A FEW.

**MULTI-MISSION AIRCRAFT AND PRODUCTS (IR/VIDEO/MAPPING) AVAILABLE. ORDER THROUGH AIR OPERATIONS.**

**AGENCY EXTRACTION ( SHORT-HAUL) H-0CH : KALISPELL AIRPORT**  
**NIGHT/COMM HOIST: TWO BEAR AIR : GLACIER PARK INT'L AIRPORT ORDER THROUGH COMMUNICATIONS**



6. PERSONNEL	NAME	PHONE #	7. FREQUENCIES	AM	FM	8. FIXED-WING Avail/ Type/ Make-Model/ N#/ Base
AOBD	Sean Cox	530-409-2363	CMND ALL FIRES SEE 205			AIRTANKERS/ SCOOPERS: ORDER THRU AERIAL SUPERVISION
ASGS	Brian Knaop	520-591-2704				
			Ridge/ Dorris Point A/G		173.8375 Tx Tone 123.0	
ATGS	Matt Counts	406-270-7437	Ridge/Dorris Point A/A		126.8250	Ridge Helibase: 48 27.734 x 113 59.416
HLCO	John Harris	805-550-7903				"West Glacier KOA "
			Tin Soldier A/G		169.6265 no tone	
			Tin Soldier A/A		127.250	Finance email: <a href="mailto:2023.ridge.finance@firenet.gov">2023.ridge.finance@firenet.gov</a> OR
Kalispell Dispatch	Aircraft Desk	406-758-5306				MS TEAMS Channel under respective fire name.
Flathead FAO	Mike Bentley	307-760-5428	Medical A/G		155.3400 Tx Tone 156.7	Type 3 UAS module on order.

FAA N#	TY	MAKE/ MODEL	BASE	START	AVAIL	REMARKS	FAA N#	TY	MAKE/ MODEL	BASE	START	AVAIL	REMARKS
	1					Order through ASGS							
	2					Order through ASGS							
	3					Order through ASGS							

# SHORT-HAUL OPERATIONS

## CAPABILITIES

- During an operational Short-Haul the helicopter is capable of inserting Short-Haulers into an area with tight canopy cover and/or technical terrain.
- Haul line lengths range from 100 feet to 350 feet.
- Short hauler and/or medical gear can be delivered to the medical scene even if extraction by short-haul is not necessary.

## ORDERING

- EMT or Medical Incident IC determines medical extraction is required.
- Follow local established procedures and/or Medical Incident Report (MIR) in the IRPG.
- Confirm aircraft type, call sign, estimated time of arrival and frequency.
- Give site selection information when ordering: hazards (i.e. ash, smoke, snags, aerial), tree height, terrain, and patient transport configuration (supine or seated position). Repeat hazards and give updated weather conditions as well as brief patient update to responding helicopter.

**PROCESS:** The helicopter will fly to the coordinates provided. They will make contact with ground personnel on scene with the patient using an identified air-to-ground frequency. The helicopter will complete a short-haul recon and size up, gather patient update information and then fly to a landing zone (LZ) to configure for short-haul operations. The helicopter will be monitoring the appropriate air-to-ground, air guard and victor frequencies. From this point, ground resources should only contact the helicopter in case of an emergency. During the insertion and extraction process ground personnel must be clear of the area.

## ON SCENE – EXPECT THE FOLLOWING

- 1 or 2 rescuers (at least one qualified as an EMT or higher)
- Backboard (if needed and not already on scene)
- All equipment necessary for patient extraction

The Patient Extraction Bag accommodates most backboards.

- A patient on a backboard, TRS, SKED or litter will be inserted into the bag.



The Seat Harness is used for patients not requiring the use of a backboard.



# SAFETY / RISK MESSAGE

Incident Name: <b>Ridge / Doris Point Tin Soldier Complex</b>	Date: <b>8/25/2023</b>	Signed: <i>Jim Burton</i> <b>SOF1</b>
---	------------------------	---------------------------------------

## Safety Discussion

### GET YOUR RADIOS CLONED TODAY

Sending or receiving information is the key to our success and we continually do this any many formats all day long on an incident. We often refer to this as communication but not all communication is the same quality. Having meaningful dialog about your task, purpose, and hazards allows you to weigh the risk in your decisions. To help frame a risk discussion use the GAR below, rate the elements independently then share your answers with the group. You might find something you missed.

## Significant Risks

Aviation Use Hazards	<b>Moderate Risk</b>	Consider the risk versus the benefit with air operations.
Driving Hazards	<b>Moderate Risk</b>	Highway 2 speed limit change occurring tomorrow back to regular posted speed limits except in front of ICP. Haul trucks on blind corners and narrow roads. Monitor Logger 1 for haul truck locations on Tin Soldier.
Fire Entrapment Hazards	<b>Low Risk</b>	Weather getting hotter and drier. Will the fire be aggressively smoldering or could you get surprised. When will the flaming phase start?
Hit by Hazards	<b>Moderate Risk</b>	Loose soils from rain X shallow root systems X burned out roots X outflow T-storm winds X <u>distracted firefighters</u> = life changing event
Environmental Hazards	<b>Moderate Risk</b>	Possible thunderstorms late in the day, take precautions. Weather getting hotter so lets ensure proper diets and hydration to prevent HRIs. Don't forget 'da Bears' are still on offense, what's your defense?

### Mission Risk Assessment (GAR 2.0)

#### Step 1: Identify, Assess, & Mitigate Risk Elements

<b>Instructions:</b> To determine the level of risk for each element below, estimate the risk level based on the Low/Medium/High scale. If your perceived rating is Medium or High, explore mitigations. Mark the element that corresponds to the mitigated risk level and document the perceived risk(s) and mitigation(s).	<b>THESE ELEMENTS ARE IDENTIFIED AS CONTRIBUTING TO A LARGE PORTION OF RISK. RATE EACH ELEMENT BELOW</b>		
<b>Planning</b> - Enough time and information for thorough planning, briefing and implementation. Consider: Completeness of mission information and on-scene details/hazards, contingency plan discussed, LCES.	<b>Complete</b> Low	<b>Partial</b> Medium	<b>None</b> High
<b>Event</b> - Refers to mission complexity. Consider: task duration, overextended, air support or logistics dependent, accessibility (remote location, access), urban interface, public evac, coordination, etc.	<b>Routine</b> Low	<b>Infrequent</b> Medium	<b>Abnormal</b> High
<b>Assets</b> - Proper number and skill set for the mission. Consider: qualifications, experience, familiarity w/ task, physical/mental state (fatigue, stress, etc.), adequate supervision (span of control), organization.	<b>Excellent</b> Low	<b>Marginal</b> Medium	<b>Poor</b> High
<b>Communications/Supervision</b> - Ability to maintain communication throughout mission. Consider: availability & quality w/command & adjoining forces, clear task - purpose - end state, backup comms, limited comms.	<b>Excellent</b> Low	<b>Partial</b> Medium	<b>None</b> High
<b>Environment</b> - Conditions surrounding mission. Consider: weather, vegetation, temperature, night/day, rugged terrain, visibility, etc.; physical hazards, road conditions, vapors, ongoing ops, snags, wildlife, etc.	<b>Ideal</b> Low	<b>Marginal</b> Medium	<b>Extreme</b> High

#### Step 2: Determine Overall Risk Level

Consider: 1) the rating for each element above, 2) the importance of the element for mission execution, 3) how elements may interact. Rate the perceived Overall Risk Level when considering this info.	Low	Medium	High
---	-----	--------	------

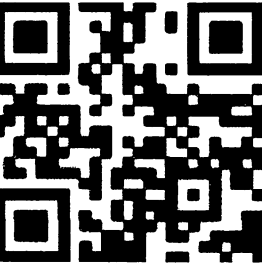
#### Step 3: Determine Risk vs. Gain: Do gains warrant the risk?

Step 3a. Enter the Overall Risk Level (Step 2) in the RISK box (Low, Medium, or High). Step 3b. Review the definitions for Gain below and enter the level in the GAIN box. (Low, Medium, or High).		←RISK VS. GAIN →	
<b>Low Gain</b> - Situation with unclear benefits or a low probability for providing concrete results. Examples: no threat to public safety, minor impact to livelihood, low environmental impact, minimal public interest/concern, non-urgent/time sensitive activity.			
<b>Medium Gain</b> - Situation that provides immediate and real benefits. Examples: minor threat to public safety, medium impact to livelihood, significant environmental impact, public interest/concern.			
<b>High Gain</b> - Situation that provides immediate and real benefits that if ignored could result in loss of life. Examples: significant threat to public safety or security, urgent SAR, major impact to livelihood, significant environmental impact, high public interest.			

**NIOSH Heat Safety Tool**



**Incident Response Pocket Guide (IRPG)**





# NOTICE



## You're in Bear Country

- DO NOT bring food, toiletries, or scented items into your tent.
- Sleep at least 100 yards away from the kitchen/food prep area.
- Secure food attractants properly in a bear resistant bin or in a secured building.
- Stay alert and look for bear activity, especially where visibility or hearing is limited (thick vegetation, streams).
- Make noise whenever possible to avoid surprising a bear, especially where visibility or hearing is limited. The human voice is the best deterrent, be loud.
- Travel in a group and keep members together.
- Never run from a bear.
- If a bear is hanging around, alert others, and from a safe place make it leave. Yell, set off car alarms, air horns, bang pots and pans, etc.
- If you experience any type of conflict with a bear or have any questions/concerns, immediately contact Bear Specialist Justine Vallieres at (406)250-1265.

<b>INCIDENT RADIO COMMUNICATIONS PLAN</b>			Incident Name <b>Ridge Fire</b>			Date/Time Prepared <b>8/24/2023 @ 1800</b>		Operational Period Date/Time <b>08/25/2023 0700 to 08/26/2023 0700</b>		
						<b>Controlled Unclassified Information//Basic</b>				
Ch	Function	Channel Name/Trunked Radio System Talkgroup	Assignment	RX Freq	RX Tone/NAC	TX Freq	Tx Tone/NAC	Mode A, D or	Remarks	
1	TAC	TAC 1	Tin Sold	168.0500	131.8	168.0500	131.8	A	Tin Soldier Group	
2	TAC	TAC 2	Repair	168.2000	131.8	168.2000	131.8	A	Repair Group	
3	TAC	TAC 3	DIV A/M	168.6000	131.8	168.6000	131.8	A	DIV A/M	
4	TAC	TAC 4	DIV R	166.7250	131.8	166.7250	131.8	A	DIV R	
5	TAC	TAC 5	DIV W	166.7750	131.8	166.7750	131.8	A	DIV W	
6	TAC	TAC 6	DORIS	168.2500	131.8	168.2500	131.8	A	DORIS	
7	CMD	CMD C3	CMD C3	170.4250	131.8	168.0750	131.8	A	Branch 1	
8	CMD	CMD N	CMD North	168.1125	167.9	163.2875	167.9	A	Branch 2	
9	CMD	CMD S	CMD South	173.1875	167.9	164.3875	167.9	A	Branch 2	
10	RPT	DESERT	All DIVS	173.1125		164.3750	107.2	A	Kalispell Dispatch	
11		Blank	Future					A	Future	
12	TAC	LOGGER2	All DIVS	151.5050	94.8	151.5050	94.8	A	LOGGER2	
13	A/G	A/G PRI	Branch 1	173.8375		173.8375	123.0	A	Primary A/G	
14	A/G	A/G TIN SOLD	Branch 2	169.2625		169.2625	167.9	A	Tin Soldier A/G	
15	AIR EVAC	TAN	All DIVS	155.3400		155.3400	156.7	A	Primary Medical Evac	
16	AIRGUARD	AIRGUARD	All DIVS	168.6250		168.6250	110.9	A	AIRGUARD	
Prepared By (Communications Unit)					Last Clone Name: RID0825					
Brent Haberer COML / Brad Boyette COML-T					Communications Phone: 208-510-8368					

After hours Medical  
406-345-5975

Use Human Repeaters when and where necessary.

Use only Channels assigned.

Controlled Unclassified Information//Basic

NFES 1330



INCIDENT RADIO COMMUNICATIONS PLAN		Incident Name				Date/Time Prepared		Operational Period Date/Time	
		Initial Attack				08/24/2023 @ 1800		08/25/2023 0700 to 08/26/2023 0700	
						Controlled Unclassified Information//Basic			
Ch	Function	Channel Name/Trunked Radio System Talkgroup	Assignment	RX Freq	RX Tone/NAC	TX Freq	Tx Tone/NAC	Mode A, D or	Remarks
1	TAC	TAC 1		172.2250	107.2	172.2250	107.2	A	
2	TAC	TAC 2		172.3750	107.2	172.3750	107.2	A	
3	TAC	TAC 3		154.3025	107.2	154.3025	107.2	A	
4	TAC	FNF WORK 1		168.1625		168.1625	167.9	A	
5	CMD	CMD DIR	Ridge CMD DIR	167.2500	107.2	167.2500	107.2	A	Ridge Command DIR
6	CMD	CMD RPT	Ridge CMD RPT	167.2500	107.2	162.2625	107.2	A	Ridge Command RPT
7	FOREST DIR	FNF DIR	Forest DIR	173.1125		173.1125	123.0	A	Forest Dir
8	FOREST RPT	DESERT	Forest RPT	173.1125		164.3750	107.2	A	Forest RPT
9	A/G	FNF A/G	Forest A/G	169.1250		169.1250	167.9	A	Forest A/G
10	A/G	RIDGE A/G	All DIV	173.8375		173.8375	123.0	A	All DIV
11	A/G	AREA A/G	3 A/G52	168.3875		168.3875	123.0	A	3 A/G52
12	Mutual FD Tac	MAROON	Mutual FD Pri	154.2800		154.2800	156.7	A	Mutual FD Pri
13	Mutual FD Tac	SCARLET	Mutual FD Sec	154.2950		154.2950	156.7	A	Mutual FD Sec
14	Mutual FD Tac	RED	Mutual FD IA	154.0700		154.0700	156.7	A	Mutual FD IA
15	Medical A/G	TAN	MT Med A/G	155.3400		155.3400	156.7	A	MT Med A/G
16	AIRGUARD	AIRGUARD	All DIV	168.6250		168.6250	110.9	A	AIRGUARD
Prepared By (Communications Unit)					Last Clone Name: 08/15/2023				
Brent Haberer COML / Brad Boyette COML-T					Communications Phone: 208-510-8368				

After hours Medical  
406-345-5975

Use Human Repeaters when and where necessary.

Use only Channels assigned.

Controlled Unclassified Information//Basic

NFES 1330

# Finance Message

Please use the QR code on front page of IAP to submit your time to  
[2023.ridge.finance@firenet.gov](mailto:2023.ridge.finance@firenet.gov)

If you need assistance with electronic submission, there will be a Finance presence at briefing to assist those in need.

**We now are accepting Time documents for THREE different fires:**

**RIDGE- P1QGT5**

**TIN SOLDIER-P1QGH4**

**DORIS POINT-P1QJ6J**

**Please note on CTR or Shift Ticket which fire you are working on.**

**Turn all time in through the firenet email above.**

- FOR CTR SUBMISSION, PLEASE PUT CTR and RO# IN SUBJECT LINE OF EMAIL.
- FOR SHIFT TICKETS, PLEASE PUT ST AND RO# IN SUBJECT LINE OF EMAIL.
- IF TURNING IN FINAL CTR OR SHIFT TICKET, PLEASE ALSO PUT FINAL IN SUBJECT LINE.
- PLEASE MAKE EVERY EFFORT TO TURN IN ALL CTR'S AND SHIFT TICKETS DAILY.
- PLEASE INCLUDE YOUR RESOURCE ORDER # ON ALL DOCUMENTATION SUBMITTED, INCLUDING RECEIPTS.
- AUTO RESPONSE IS SET UP TO LET YOU KNOW THAT DOCUMENTS WERE RECEIVED.
- FOR DEMOB: Finance will email the Draft OF-288 or OF-286 to employee for their review and approval. If everything is correct, Finance will reply with FINAL OF-288/OF-286.
- CONTRACTORS: Be sure to get Performance Evaluation before demobilization.

## FINANCE CHECK IN:

- PLEASE ENSURE THE BELOW DOCUMENTS ARE EMAILED TO FINANCE WITH RESOURCE ORDER NUMBER NOTED:

<b>Agency Equipment/Crews:</b>	<b>Overhead:</b>	<b>Contract Equipment/Contract Crews:</b>	<b>Cooperator:</b>
<ul style="list-style-type: none"><li>• Manifest</li><li>• Resource Order</li><li>• CTR's</li></ul>	<ul style="list-style-type: none"><li>• Resource Order</li><li>• AD Hire Form (If an AD)</li><li>• CTR's</li></ul>	<ul style="list-style-type: none"><li>• Agreement/Manifest</li><li>• Resource Order</li><li>• Shift Ticket</li><li>• Inspection Forms</li></ul>	<ul style="list-style-type: none"><li>• Cooperative Agreement</li><li>• Resource Order</li><li>• Shift Ticket</li><li>• Inspection Forms</li></ul>

# Official Fire Information



Ridge, Doris Point, Tin Soldier Fire Information

Phone: (406)998-6074 (8:00 am to 8:00 pm)

Email: [2023.Ridge@firenet.gov](mailto:2023.Ridge@firenet.gov)

Inciweb: <https://inciweb.nwcg.gov/incident-information/mtfnf-ridge-fire>

Facebook: <https://www.facebook.com/ridge.fire.information>

YouTube: <https://www.youtube.com/@2023ridgefire>

## TALKING POINTS FOR AUGUST 25, 2023

- An infrared flight indicated there is still significant heat signatures within all fire perimeters, but particularly on the Doris Point and Tin Soldier fires. Expect to see increased fire activity on all fires as weather conditions become warmer and drier.
- Southwest Area Incident Management Team 1 will host a community meeting at the Glacier Bible Camp at 5:00 PM on Sunday, August 27<sup>th</sup>.
- Ridge Fire: Crews continue dealing with muddy road conditions and accessibility issues. Resources are assessing opportunities to construct handline on the northern edge of the fire, as well as preparing for backhaul of equipment and supplies. A repair group is in place evaluating restoration needs.
- Doris Point Fire: Road access remains difficult for crews. They spent several operational periods clearing debris and downed trees from the roadway, securing rolling debris near Doris Creek Campground, and monitoring the fire perimeter.
- Tin Soldier Fire: Road conditions remain difficult for accessing the fires. Crews are working closely with Resource Advisors regarding the timeline for mechanical thinning along Meadow Creek. Resources are checking pump operations around structures, planning for backhaul of supplies and equipment, securing an area of slop over from before the rain event, as well as assessing FS RD 2828 for future use as an access route, or containment feature.
- Crews will maintain point protection strategy on the values at risk in coordination with the Flathead National Forest.
- Aviation will be utilized for backhaul missions, where needed.
- Steady rain has ended but elevated moisture lingering across the area could result in the development of showers and thunderstorms at times.

### Evacuation Changes:

The Flathead County Sheriff's Office has rescinded the pre-evacuation notice from the east side of Spotted Bear Road to West Glacier. An evacuation order has been issued by the Flathead County Sheriff for Heinrude community. Visit the Flathead Sheriff's office for details <https://www.facebook.com/flatheadsheriff>

### Fire Closure:

The Hungry Horse Reservoir is closed to all public access, including both the east and west side roads. As firefighting efforts continue on the Ridge Fire, the Tin Soldier, and other fires in the area, the closure is in place to provide for public and firefighter safety. <https://www.fs.usda.gov/alerts/flathead/alerts-notices/?aid=82283>

# DEMOB MESSAGE

## TENTATIVE RELEASE FOR 8/25/23

### CREWS

C-13 0830 (CRWC) CRW CAMP CHICO 28  
 C-14 0830 (CRW1) CRW1 LEWIS & CLARK IHC  
 C-16 1200 (CR21) CRW2IA MIDEWIN IHC

### EQUIPMENT

E-61 1030 (WTS2) WTS2 MARTIN CITY 1691

### OVERHEAD

O-78 0700 (AREP) DIAZ, MIGUEL  
 O-120 2000 (SITL) EISZELE, DANIEL  
 O-176 2200 (RADO) MELENDEZ, DAVID

## TENTATIVE RELEASE FOR 8/26/23

### OVERHEAD

O-151 0600 (GSUL) POPWELL, DOUGLAS D  
 O-108 0930 (GISS) BARRETT, CHRISTOPHER B  
 O-131 0930 (INCM) BLANCHARD, AUSTIN  
 O-128 0930 (SOFR) MARTIN, MATTHEW LLOYD  
 O-101 0930 (HEQB) RABLIN, EDWARD  
 O-214 2000 (RADO) LAND, AERIN  
 O-184.23 2200 (DIVS) D'ANTONIO, ASHLEIGH B

### EQUIPMENT

E-96 1030 (ENG3) MISSOULA CITY  
 E-109 1030 (ENG3) ENG3 LL MEADOW WILDFIRE  
 E-94 1130 (ENG6) EAST MISSOULA  
 E-111 1130 (ENG3) ENG3 CASTLE MOUNTAIN  
 E-110 1200 (ENG3) ENG3 SHERIDAN

### TIN SOLDIER

O-32 0830 (TFLD) WOOD, JAMES T

**To request a flight:**

**Submit your  
information at least 72  
hours in advance**

## FLIGHT REQUEST FORM

Request Order #	
Name as shown on photo ID	
Date of Birth	
Cell Phone	
Male or Female	
Email Address	
Last Work Date	
Flight Date	
Departure Airport Code	
Arrival Airport Code	
Rental Location	
Need ride to airport?	

## DEMOB IS LOCATED AT RIVER RANCH ICP

Resources approved for release will report to the Demob Unit to receive a checkout form. The crew leader or single resource will obtain required signatures after turning in any accountable equipment or supplies, vehicle inspections if required, completing any required documentation, and closing out with the Finance Section.

Dana Bagnoli, DMOB-t  
385-422-3351

2023.ridge.demob@firenet.gov

### VEHICLE INSPECTIONS:

#### WEED WASH:

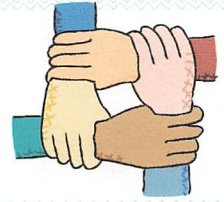
Located at KOA Staging  
251 Halfmoon Flats Rd., West Glacier, MT



*TJB*

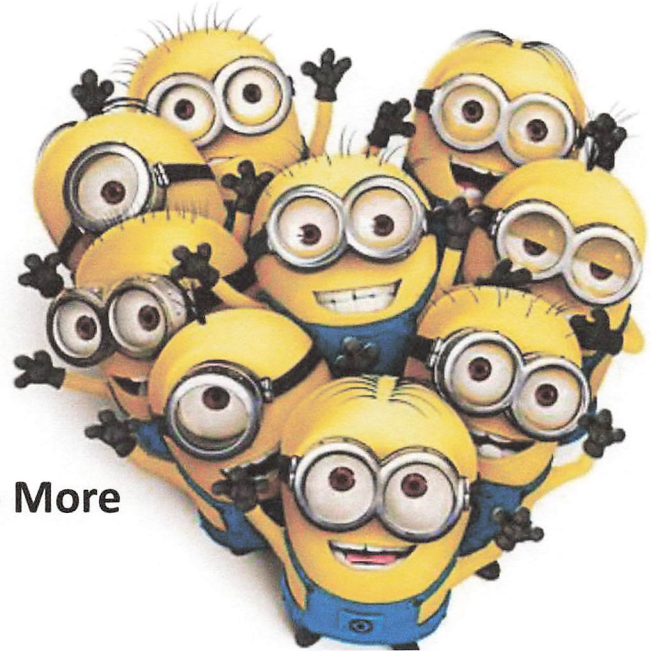


## Human Resource Message



### 7 Steps to Happiness

- ♥ Think less, Feel More
- ♥ Frown Less, Smile More
- ♥ Talk Less, Listen More
- ♥ Judge Less, Accept More
- ♥ Watch Less, Do More
- ♥ Complain Less, Appreciate More
- ♥ Fear Less, Love More



**Yesterday's Riddle:** Does the law allow a man to marry his widow's sister? Why?  
**Answer:** Of course not, he would have to be dead and dead people can't marry.

**Today's Riddle:** How do you make the number one disappear?

*Ana G. Parada, HRSP*  
505-270-3457



**WE NEED YOU !**



**Take a Trainee  
Become a Trainer.  
ASK Your TNSP HOW!**

**Emil**

**(650)520-5102**

**TNSPEP@gmail.com**

Training Check In

Trainee Exit Interview





# Northern Rockies Chainsaw Parts Order Form

Please see the back page for part order numbers and items requiring an approved Property Loss and Damage form.

Name:	Gen. Msg #:
Resource #:	Request Date:
Contact #:	Need by Date/Time:
TO BE FILLED BY: (circle one):	<input type="checkbox"/> Buying Team <input type="checkbox"/> Home Unit <input type="checkbox"/> Cache

## Chainsaw Information

Make (circle one or fill in):	<input type="checkbox"/> Stihl	<input type="checkbox"/> Husqvarna	<input type="checkbox"/> Other:				
Model:							
Serial #							
Bar Length (circle one):	<input type="checkbox"/> 20"	<input type="checkbox"/> 24"	<input type="checkbox"/> 28"	<input type="checkbox"/> 30"	<input type="checkbox"/> 32"	<input type="checkbox"/> 36"	<input type="checkbox"/> Other:

## Request:

Part Name and Number	Quantity	Part Name and Number	Quantity

## For Sprocket & Chain Orders (circle one or fill in):

# of Drivers:				
Pitch (*):	<input type="checkbox"/> 3/8"	<input type="checkbox"/> .325"	<input type="checkbox"/> Other:	
Gauge:	<input type="checkbox"/> .50	<input type="checkbox"/> .063	<input type="checkbox"/> Other:	
Tooth Layout:	<input type="checkbox"/> Full	<input type="checkbox"/> Semi-Skip	<input type="checkbox"/> Full Skip	
Tooth Cut:	<input type="checkbox"/> Chisel	<input type="checkbox"/> Semi-Chisel	<input type="checkbox"/> Other:	
# of Sprocket Teeth:				

Concurrence (Line Supervisor i.e. DIVS): \_\_\_\_\_

Supply Unit Leader has checked that the items ordered do not need an approved Property Loss & Damage Form, or that the approval is attached. (Supply Unit Leader checks box and initials here: \_\_\_\_\_).

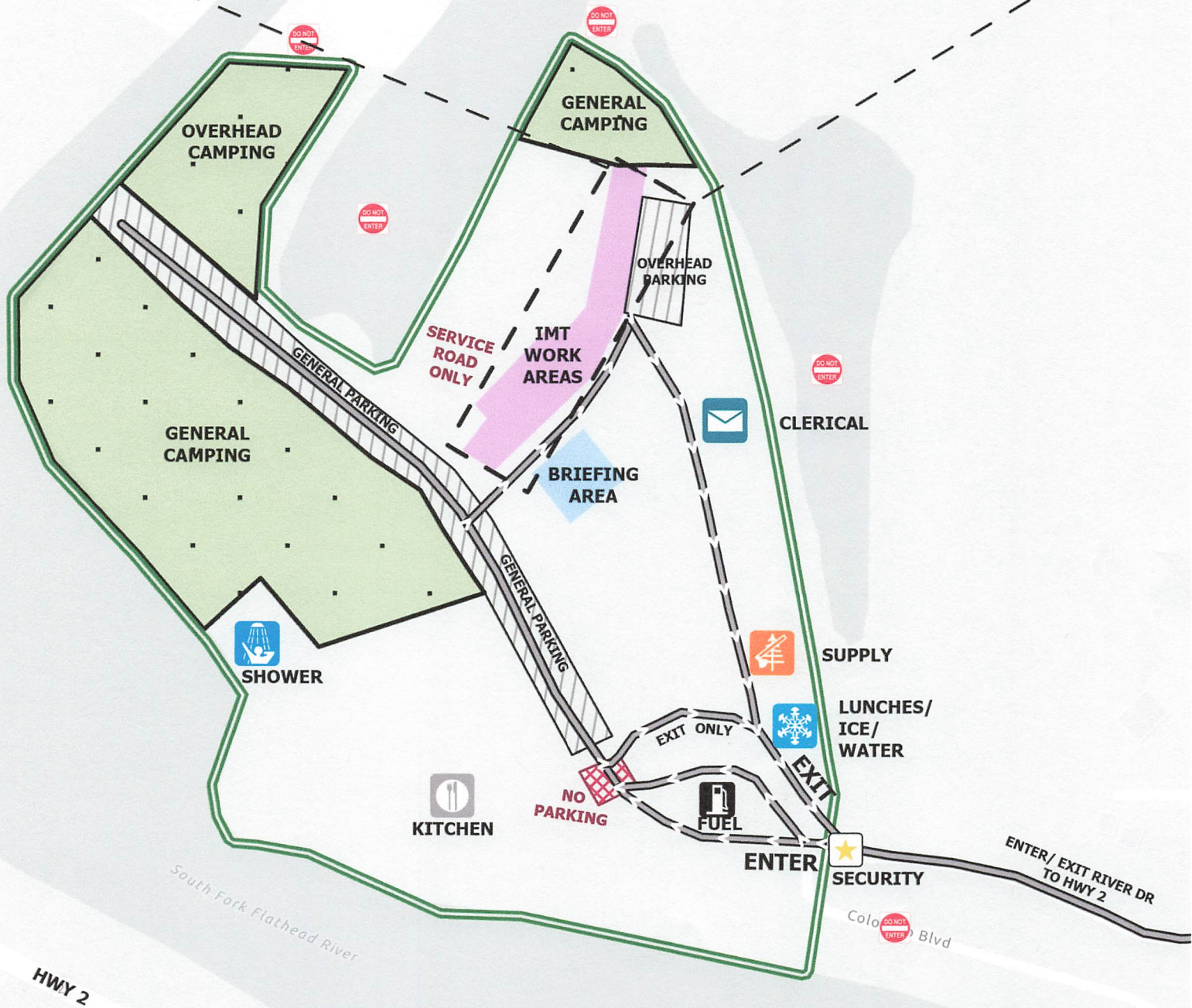
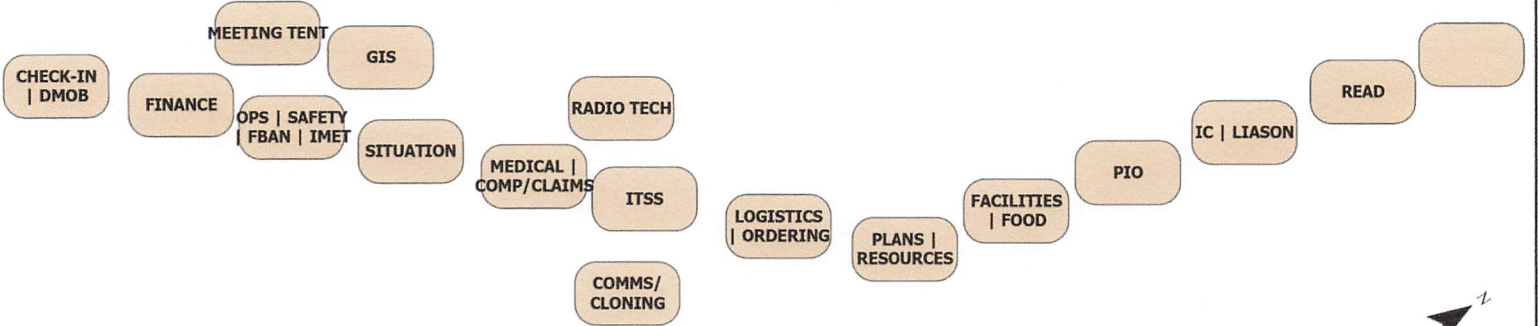
First source of supply is Cache, shaded blocks indicate items available thru Northern Rockies Cache. Items requiring an approved Property Loss and Damage form are in a separate list at the bottom.													
PART	034/341	360/MS360	MS361	MS362	038/381	044/MS440	MS441	460/MS461	MS462	0640/650	MS660	MS880	
Spark Plug (NFES# 000344)	Bosch WSR6F NGK BPMR7A Champion RCJ6Y	Bosch WSR6F NGK BPMR7A Champion RCJ6Y	Bosch WSR6F NGK BPMR7A Champion RCJ6Y	Bosch WSR6F NGK BPMR7A Champion RCJ6Y	Bosch WSR6F NGK BPMR7A Champion RCJ6Y	Bosch WSR6F NGK BPMR7A Champion RCJ6Y	Bosch WSR6F NGK BPMR7A Champion RCJ6Y	Bosch WSR6F NGK BPMR7A Champion RCJ6Y	Bosch WSR6F NGK BPMR7A Champion RCJ6Y	Bosch USR7AC NGK CMR6H	Bosch WSR6F NGK BPMR7A Champion RCJ6Y	Bosch WSR6F NGK BPMR7A Champion RCJ6Y	Bosch WSR6F NGK BPMR7A Champion RCJ6Y
Needle Cage Bearing (NFES# 066565)	9512-933-2380	9512-933-2380	9512-933-2380	9512-933-2380	9512-933-3150	9512-933-2380	9512-933-2380	9512-933-2380	9512-933-2380	9512-933-2380	9512-933-2382	9512-933-3170	
Retaining Washer for Rim Sprocket	0000-958-1022	0000-958-1022	0000-958-1032	0000-958-1032	0000-958-1231	0000-958-1032	0000-958-1032	0000-958-1032	0000-958-1032	0000-958-1032	0000-958-1032	0000-958-1236	
E Clip (NFES# 066517)	9460-624-0801	9460-624-0801	9460-624-0801	9460-624-0801	9460-624-1001	9460-624-0801	9460-624-0801	9460-624-0801	9460-624-0801	9460-624-0801	9460-624-0801	9460-624-1001	
Fuel Filter	0000-350-3504	0000-350-3504	0000-350-3504	0000-350-3504	0000-350-3504	0000-350-3504	0000-350-3504	0000-350-3504	0000-350-3518	0000-350-3504	0000-350-3500	0000-350-3504	
Air Filter - HD (NFES# 066756)	1125-120-1626	1125-120-1612	1135-120-1600	1140-140-4401	1119-120-1611	0000-140-4402	0000-120-1654	0000-120-1654	1142-140-4402	0000-140-4402	0000-140-4402	0000-140-4402	
Pre Filter - OEM	N/A	N/A	N/A	N/A	1119-120-1500	0000-141-0300	0000-141-0300	0000-141-0300	N/A	0000-141-0300	0000-141-0300	0000-141-0300	
Bar Nut (NFES# 06661)	0000-955-0801	0000-955-0801	0000-955-0801	0000-955-0801	0000-955-0801	0000-955-0801	0000-955-0801	0000-955-0801	0000-995-0803	0000-955-0801	0000-955-0801	0000-955-0903	
Inner Slide Plate	1122-664-1000	1122-664-1000	1122-664-1000	1122-664-1000	1119-664-1000	1128-664-1001	1138-664-1000	1128-664-1001	1128-664-1001	1128-664-1001	1128-664-1001	1124-664-1001	
<b>STIHL RAPID - Super (RS)</b>													
Chain 3/8" PITCH - .050" GA - DR													
20" - 72 DR	3623-005-0072	3623-005-0072	3623-005-0072	3623-005-0072	3623-005-0072	3623-005-0072	3623-005-0072	3623-005-0072	3623-005-0072	3623-005-0072	3623-005-0072	3623-005-0072	
25" - 84 DR (NFES# 006500)	3623-005-0084	3623-005-0084	3623-005-0084	3623-005-0084	3623-005-0084	3623-005-0084	3623-005-0084	3623-005-0084	3623-005-0084	3623-005-0084	3623-005-0084	3623-005-0084	
28" - 91 DR	3623-005-0091	3623-005-0091	3623-005-0091	3623-005-0091	3623-005-0091	3623-005-0091	3623-005-0091	3623-005-0091	3623-005-0091	3623-005-0091	3623-005-0091	3623-005-0091	
32" - 105 DR	N/A	N/A	N/A	N/A	N/A	3623-005-0105	3623-005-0105	3623-005-0105	3623-005-0105	3623-005-0105	3623-005-0105	3623-005-0105	
<b>STIHL RAPID - Super - Full Skip (RSF)</b>													
Chain 3/8" PITCH - .050" GA - DR													
20" - 72 DR	N/A	3676-005-0072	3676-005-0072	3676-005-0072	3676-005-0072	3676-005-0072	3676-005-0072	3676-005-0072	3676-005-0072	3676-005-0072	3676-005-0072	3676-005-0072	
25" - 84 DR	3676-005-0084	3676-005-0084	3676-005-0084	3676-005-0084	3676-005-0084	3676-005-0084	3676-005-0084	3676-005-0084	3676-005-0084	3676-005-0084	3676-005-0084	3676-005-0084	
28" - 91 DR	3676-005-0091	3676-005-0091	3676-005-0091	3676-005-0091	3676-005-0091	3676-005-0091	3676-005-0091	3676-005-0091	3676-005-0091	3676-005-0091	3676-005-0091	3676-005-0091	
32" - 105 DR	N/A	N/A	N/A	N/A	N/A	3676-005-0105	3676-005-0105	3676-005-0105	3676-005-0105	3676-005-0105	3676-005-0105	3676-005-0105	
Bar Oil: Quantity - Gallon	NFES# 1880												
Bar Oil: Quantity - Quart	NFES# 1869												
2 Cycle Oil: Quantity - Quart	NFES# 0341												

The following parts require an approved Property Loss & Damage form prior to ordering:

<b>Guide Bars - 3/8" - .050" GA (STIHL ROLLOMATIC - ES)</b>												
20"	3003-000-8822	3003-000-8822	3003-000-8822	3003-000-8822	3003-000-8822	3003-000-8822	3003-000-8822	3003-000-8822	3003-000-8822	3003-000-8822	3003-000-8822	3003-000-8822
25" (NFES# 066584)	N/A	3003-000-8830	3003-000-8830	3003-000-8830	3003-000-8830	3003-000-8830	3003-000-8830	3003-000-8830	3003-000-8830	3003-000-8830	3003-000-8830	3003-000-8830
28"	N/A	N/A	N/A	N/A	N/A	3003-000-8838	3003-000-8838	3003-000-8838	3003-000-8838	3003-000-8838	3003-000-8838	3003-000-8838
32"	N/A	N/A	N/A	N/A	N/A	3003-000-8846	3003-000-8846	3003-000-8846	3003-000-8846	3003-000-8846	3003-000-8846	3003-000-8846
Rim Sprocket Kit 3/8 - 7T	1125-007-1040	1125-007-1223	1128-007-1000	1135-007-1002	1119-007-1003	1128-007-1000	1128-007-1000	1128-007-1017	1128-007-1000	1122-007-1000	1122-007-1000	N/A
Clutch Drum	Order Sprocket Kit	Order Sprocket Kit	Order Sprocket Kit	Order Sprocket Kit	Order Sprocket Kit	Order Sprocket Kit	Order Sprocket Kit	Order Sprocket Kit	Order Sprocket Kit	Order Sprocket Kit	Order Sprocket Kit	Order Sprocket Kit
Rim Sprocket 3/8 7T (NFES# 066652)	0000-642-1231	0000-642-1023	0000-642-1223	0000-642-1223	0000-642-1223	0000-642-1223	0000-642-1223	0000-642-1223	0000-642-1223	0000-642-1223	0000-642-1223	N/A
Rim sprocket kit 3/8 - 8T	N/A	N/A	1128-007-1001	1128-007-1001	N/A	1128-007-1001	1128-007-1001	1128-007-1001	1128-007-1001	1122-007-1001	1122-007-1001	1124-007-1025
Clutch Drum	Order Sprocket Kit	Order Sprocket Kit	Order Sprocket Kit	Order Sprocket Kit	Order Sprocket Kit	Order Sprocket Kit	Order Sprocket Kit	Order Sprocket Kit	Order Sprocket Kit	Order Sprocket Kit	Order Sprocket Kit	Order Sprocket Kit
Rim Sprocket 3/8 - 8T	N/A	0000-642-1216	0000-642-1216	0000-642-1216	0000-642-1216	0000-642-1216	0000-642-1216	0000-642-1216	0000-642-1216	0000-642-1216	0000-642-1216	0000-642-1216
Clutch	1127-160-2050	1125-160-2005	1128-160-2004	1138-160-2010	1119-160-2000	1128-160-2001	1138-160-2010	1128-160-2004	1142-160-2000	1122-160-2005	1122-160-2002	1124-160-2005
Chain Adjuster Kit	1125-007-1036	1125-007-1021	1125-007-1021	1125-007-1021	1118-664-1600	1125-007-1021	1125-007-1021	1125-007-1021	1125-007-1021	1125-007-1021	1125-007-1021	1124-007-1008
Bump Strip	1121-648-6610	1121-648-6610	1121-648-6610	1121-648-6610	1121-648-6610	1121-648-6610	1121-648-6610	1121-648-6610	1121-648-6610	1121-648-6610	1121-648-6610	1121-648-6610
Starter Rope W/handle	1128-190-3400	1128-190-3400	1128-190-3400	1128-190-3400	1128-190-3400	1128-190-3400	1128-190-3400	1128-190-3400	1128-190-3400	1128-190-3400	1128-190-3400	1128-190-3400
Worm Gear (Oiler)	1125-640-7110	1125-640-7110	1128-640-7112	1128-640-7112	1119-642-1501	1128 640 7112	1128 640 7112	1128 640 7112	1128-640-7112	1122-640-7105	1122-640-7105	1124-640-7512
Manifold Boot	1125 141 2200	1125 141 2200	1135 141 2200	1140 140 2503	1119 140 2500	1128 141 2204	1138 140 2508	1128 141 2204	1142 141 2200	1122 141 2200	1122 141 2201	1124 141 2202



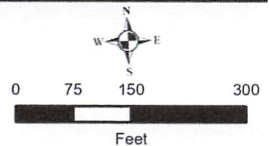
# Incident Management Team Unit Locations



**ICP MAP**  
**Ridge Doris Point**  
 MT-FNF-000518  
 MT-FNF-000496



- |              |                   |                 |               |
|--------------|-------------------|-----------------|---------------|
| DO NOT ENTER | LUNCHES/ICE/WATER | IMT WORK SPACES | PARKING       |
| CLERICAL     | SHOWER            | IMT WORK AREAS  | NO PARKING    |
| FUEL         | SUPPLY            | BRIEFING AREA   | CAMPING AREAS |
| KITCHEN      | SECURITY          |                 |               |





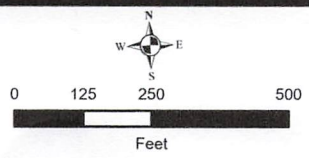
**HALFMOON CAMP**

Ridge

MT-FNF-000518



-  GROUND SUPPORT
-  DO NOT ENTER
-  HEAVY EQUIPMENT STAGING
-  HEAVY EQUIPMENT STAGING
-  HELIBASE
-  HELIBASE
-  WEED WASH



# MEDICAL PLAN

<b>1. Incident / Project Name</b> Ridge, Doris Point, & Tin Soldier	<b>2. Operational Period</b> Date/Time: 8/25/2023 (0700-2000)
--	--

<b>3. Ambulance Services</b>			
Name	Location	Phone and Emergency Frequency	Advanced Life Support (ALS) YES NO
Three Rivers EMS	31 7th Street W Columbia Falls, MT 59912	911 406-892-4244	X

<b>4. Air Ambulance Services</b>		
Name	Phone	Type of Aircraft & Capability
ALERT-1	911 866-302-9767	Bell 407 Critical Care/ALS
Two Bear Air Resuce	911 406-758-5610	Bell 429 Rescue/ Hoist NVG/ BLS
350HQ	Kalispell Dispatch	H-125 Short-haul/ BLS

<b>5. Hospitals</b>						
Name Complete Address	Degrees Decimal Minutes	Travel Time	From ICP	Phone	Helipad Yes No	Level of Care
Logan Health Whitefish 1600 Hospital Way Whitefish, MT 59937	Lat: 48° 22.51' N	7 MINS	19 MINS	406-863-3500 Ask for ER	X	Level 4
	Long: 114° 19.56' W					
Logan Health Kalispell 350 Heritage Way Kalispell, MT 59901	Lat: 48° 22.84' N	10 MINS	33 MINS	406-752-5111 Ask for ER	X	Level 3
	Long: 114° 19.88' W					
St Patrick's Medical Center 500 W. Broadway Missoula, MT 59802	Lat: 113° 59.96' N	45 MINS	2.5 HRS	406-543-7271 Ask for ER	X	Level 2
	Long: 122° 19.39' W					
Harbor View Medical Center 325 9th Ave. Seattle, WA 98104	Lat: 47° 36.24' N	1.5 HRS	8.5 HRS	206-744-3140 Ask for ER	X	Level 1 Burn Center
	Long: 122° 19.39' W					

## Branch I

<b>DIV A/M</b>	EMS Responders & Capabilities:	Med Team 3: O-110: Robert Smith EMPF: 541-285-8890 (Lead) Med Team 4: O-109: James Fox EMPF: 253-222-8023 (Lead) AMBO 10: E-114: Timothy Gaston EMPF 406-471-0146	
	Equipment Available on Scene:	BLS/ALS Kits; 4x4 ALS Ambulance	
	Medical Emergency Channel:	Command	A/G: TAN/MED (VMED28)
	ETA for Ambulance to Scene:	All time approximate	
	Air:	25 min (minimum)	
	Ground:	15 min (minimum) to H15 Pt transfer point	
	Approved Heli-spot	H 15	
	Lat:	48° 22.894' N	
Long:	114° 00.283' W		
<b>DIV R</b>	EMS Responders & Capabilities:	Med Team 1: O-63: Ryan Gregor EMPF: 602-363-0770 (Lead) Med Team 6: O-208: Ayala Rahm EMPF: 520-403-8100 (Lead)	
	Equipment Available on Scene:	BLS/ALS Kits; UTV (Non pt transport capable)	
	Medical Emergency Channel:	Command	A/G: TAN/MED (VMED28)
	ETA for Ambulance to Scene:	All time approximate	
	Air:	25 min (minimum)	
	Ground:	40 min (minimum) DP11 to H15 pt transfer point	
	Approved Heli-spot	H 8	H 10
	Lat:	48° 21.861' N	48° 22.362' N
Long:	113° 54.227' W	113° 54.227' W	
<b>DIV W</b>	EMS Responders & Capabilities:	Med Team 2: E-129: Adam Osiadacz EMPF: 805-477-8568 (Lead) Med Team 7: O-96: Rodney Schmidt EMPF: 406-261-9541 (Lead)	
	Equipment Available on Scene:	BLS/ALS Kits; UTV (pt transport capable)	
	Medical Emergency Channel:	Command	A/G: TAN/MED (VMED28)
	ETA for Ambulance to Scene:	All time approximate	
	Air:	25 min (minimum)	
	Ground:	30 min (minimum) to H15 Pt transfer point	
	Approved Heli-spot	H 8	
	Lat:	48° 21.861' N	
Long:	113° 54.227' W		

<b>DORIS POINT GROUP</b>	EMS Responders & Capabilities:	Med Team 5: O-111: Michael Sowell EMPF: 502-593-1827 (Lead) AMBO 11: E-140: Aaron Henry EMPF: 903-920-7692		
	Equipment Available on Scene:	BLS/ALS Kits; 4x4 ALS Ambulance		
	Medical Emergency Channel:	Command		A/G: TAN/MED (VMED28)
	ETA for Ambulance to Scene:	All time approximate		
	Air:	25 min (minimum)		
	Ground:	20 min (minimum) to Dam Creek Pt transfer point		
	Approved Heli-spot	H 22		
	Lat:	48° 18.990' N		
Long:	113° 58.522' W			

### Branch II

<b>TIN SOLDIER GROUP</b>	EMS Responders & Capabilities:	Med Team 8: O-209: Beione Mixon EMPF: 313-977-6319 (Lead) AMBO 9: E-58: Matt Roth EMPF: 406-214-9738 (Lead)		
	Equipment Available on Scene:	BLS/ALS Kits; 4x4 ALS Ambulance		
	Medical Emergency Channel:	Command		A/G: TAN/MED (VMED28)
	ETA for Ambulance to Scene:	All time approximate		
	Air:	30 min (minimum)		
	Ground:	1.25 hr (minimum) to East Pt transfer point		
	Approved Heli-spot	H 52	H 50	H 20
	Lat:	48° 04.720' N	47° 57.413' N	47° 55.098' N
Long:	113° 41.622' W	113° 33.496' W	113° 30.924' W	

### Camps

<b>ICP</b>	EMS Responders & Capabilities:	Will Kuamo'o, MESC, 480-799-7447 Brandie Smith, MEDL, 719-207-1148 Cheyenne Lane, MEDL(T), 512-629-3476 Alan Browne, MEDL(T), 406-261-5255		
	Equipment Available on Scene:	AED/BLS Kit		
	Medical Emergency Channel:	TAC 1		A/G: TAN/MED (VMED28)
	ETA for Ambulance to Scene:	All time approximate		
	Air:	15 Mins (minimum)		
	Ground:	8 Mins (minimum)		
	Approved Heli-spot	H1		
	Lat:	48° 23.120' N		
Long:	114° 03.740' W			

<b>SPOTTED BEAR SPIKE</b>	EMS Responders & Capabilities:	Med Team 8: O-209: Beione Mixon EMPF: 313-977-6319 (Lead) AMBO 9: E-58: Matt Roth EMPF: 406-214-9738 (Lead)		
	Equipment Available on Scene:	BLS/ALS Kits; 4x4 ALS Ambulance		
	Medical Emergency Channel:	TAC 1		A/G: TAN/MED (VMED28)
	ETA for Ambulance to Scene:	All time approximate		
	Air:	30 min (minimum)		
	Ground:	1.25 hr (minimum) to East Pt transfer point		
	Approved Heli-spot	H 52	H 50	
	Lat:	48° 04.720' N	47° 57.413' N	
Long:	113° 41.622' W	113° 33.496' W		

Cheyenne Lane MEDL(T) *Cheyenne Lane* 8/25/2023 Jim Burton SOF1 *Jim Burton* 8/25/23

## In Camp Medical Emergencies Procedures

### In ICP:

1. Radio over TAC1
2. Call Medical at 406-435-5975

### In Spotted Bear Spike:

1. Contact Branch II through Tac 1
2. Radio through Command with LOCATION and COMPLAINT

For any questions or concerns please call  
**406-435-5975**

Will Kuamo'o, MESC, 480-799-7447  
Brandie Smith, MEDL, 719-207-1148

**INTENTIONALLY LEFT BLANK**

### Medical Incident Report

FOR A **NON-EMERGENCY INCIDENT**: WORK THROUGH CHAIN OF COMMAND TO REPORT AND TRANSPORT INJURED PERSONNEL AS NECESSARY.

FOR A **MEDICAL EMERGENCY**: IDENTIFY ON SCENE INCIDENT COMMANDER BY NAME AND POSITION AND ANNOUNCE "MEDICAL EMERGENCY" TO INITIATE RESPONSE FROM COMMUNICATIONS

**Use the following items to communicate situation to communications/dispatch.**

**1. CONTACT COMMUNICATIONS / DISPATCH** (Verify correct frequency prior to starting report)

*Ex: "Communications, Div. Alpha. Stand-by for Emergency Traffic."*

**2. INCIDENT STATUS:** Provide incident summary (including number of patients) and command structure.

*Ex: "Communications, I have a Red priority patient, unconscious, struck by a falling tree.*

*Requesting air ambulance to Forest Road 1 at (Lat./Long.)*

*"This will be the Trout Meadow Medical Incident, IC is TFLD Jones. EMT Smith is providing medical care."*

Severity of Emergency AND Transport Priority (priority 1, 2, 3)	<input type="checkbox"/> <b>RED / PRIORITY 1</b> Life or limb threatening injury or illness. Evacuation need is <b>IMMEDIATE</b> <i>Ex: Unconscious, difficulty breathing, bleeding severely, 2° - 3° burns more than 4 palm sizes, heat stroke, disoriented.</i>	
	<input type="checkbox"/> <b>YELLOW / PRIORITY 2</b> Serious Injury or illness. Evacuation may be <b>DELAYED</b> if necessary. <i>Ex: Significant trauma, unable to walk, 2° - 3° burns not more than 1-3 palm sizes.</i>	
	<input type="checkbox"/> <b>GREEN / PRIORITY 3</b> Minor Injury or illness. <b>Non-Emergency transport</b> <i>Ex: Sprains, strains, minor heat-related illness.</i>	
Nature of Injury or Illness & Mechanism of Injury		Brief Summary of Injury or Illness <i>(Ex: Unconscious, Struck by Falling Tree)</i>
Transport Request		Air Ambulance / Short Haul/Hoist Ground Ambulance / Other
Patient Location		Descriptive Location & Lat. / Long. (WGS84)
Incident Name		Geographic Name + "Medical" <i>(Ex: Trout Meadow Medical)</i>
On-Scene Incident Commander		Name of on-scene IC of Incident within an Incident <i>(Ex: TFLD Jones)</i>
Crew Patient Care		Name of Care Provider <i>(Ex: EMT Smith)</i>

**3. INITIAL PATIENT ASSESSMENT:** Complete this section for each patient as applicable (start with the most severe patient)

Patient Assessment: <i>(IRPG PAGE 106)</i>	Age:	Weight:	Chief Complaint:
Skin Signs: (color/moisture/temp)	Level of Consciousness:	BP:	HR:      Respirations:
Treatment:			

**4. TRANSPORT PLAN:**

Evacuation Location <i>(drop point, intersection, helispot, Lat. / Long, hazards)</i>	Patient's ETA to Location:
---	----------------------------

**5. ADDITIONAL RESOURCES / EQUIPMENT NEEDS:**

*Paramedic / EMT - Crews - Immobilization Devices - AED - Oxygen - Trauma Bag - IV/Fluid(s) - Splints - Rope rescue - Wheeled litter - HAZMAT - Extrication*

**6. COMMUNICATIONS: Identify State Air/Ground EMS Frequencies and Hospital Contacts as applicable**

Function	Channel Name/Number	Receive (RX)	Tone/NAC *	Transmit (TX)	Tone/NAC *
COMMAND					
AIR-TO-GRND					
TACTICAL					

**7. CONTINGENCY: Considerations:** if primary options fail, what actions can be implemented in conjunction with primary evacuation method?  
*Be thinking ahead.*

**8. ADDITIONAL INFORMATION:** Updates/Changes, etc.

**REMEMBER:** Confirm ETA's of resources ordered. Act according to your level of training

**Be Alert - Keep Calm - Think Clearly - Act Decisively**

\*\*\* Follow up with MEDL upon return to ICP \*\*\*

