

# INCIDENT ACTION PLAN

*Ridge Fire*

MT-FNF-000518 P1 QGT5 (O110)

*Doris Point Fire*

MT-FNF-000496 P1 QJ6J (O110)

*Tin Soldier Complex*

MT-FNF-000535 P1 QGH4 (O110)

## TUESDAY, August 29, 2023

Day Operational Period: 0700-2000

### FOR ALL ICP OR SPIKE CAMP EMERGENCIES

1. Utilize radio on Tac 1 (or on a Logistics radio within the ICP); or
2. By phone to Ridge Communications at (208) 510-8368; or
3. By activating the local 9-1-1 system as appropriate

Due to the chance of rain WEDNESDAY, the briefing will be on Zoom only. Go to the QR code for the link.



- IAPs
- Maps
- Check-in
- Blank CTRs
- Blank Shift Tickets
- Finance Email

### FIRE INFORMATION

Email: [2023.Ridge@firenet.gov](mailto:2023.Ridge@firenet.gov)

Phone Line: 406-998-6074

Inciweb: <https://inciweb.nwcg.gov/incident-information/mtfnf-ridge-fire>

Facebook: <https://www.facebook.com/ridge.fire.information>

YouTube: <https://www.youtube.com/@2023ridgfire>



SOUTHWEST AREA TEAM #1

Carl Schwope – Incident Commander  
Jason Clawson – Deputy Incident Commander



# INCIDENT OBJECTIVES

ICS-202

INCIDENT NAME

**RIDGE AND DORIS POINT FIRES,  
TIN SOLDIER COMPLEX**

DATE  
PREPARED

8/28/2023

TIME  
PREPARED

2000

OPERATIONAL PERIOD (DATE/TIME)

**TUESDAY, August 29, 2023 DAY Operational Period: 0700 – 2000**

GENERAL CONTROL OBJECTIVES

## Leader's Intent

- Effectively implement a value-driven strategy that utilizes a mix of tactics (direct, indirect, and point-protection) when and where the probability of success is high, and the risk is commensurate with the identified values. Success is defined as safely achieving objectives with the least firefighter exposure necessary while enhancing stakeholder support and adhering to the core values of **Duty, Respect and Integrity**.

## Control Objectives

- Ridge Fire is a Full Suppression Fire. The Doris Point Fire/Tin Soldier Complex are Point Protection Fires.
- Minimize loss of our most Highly Valued Resources and Assets including private residences and infrastructure in the communities of Martin City, Hungry Horse, Coram, West Glacier, Hungry Horse Dam and other outlying private property, South Fork Abbot Creek, improvements, and infrastructure in and directly adjacent to the planning area. Additionally, minimize impacts to communication infrastructure on Desert Mountain and Firefighter Lookout.
- Unless human life is at risk, and to the extent possible, prevent retardant use in identified retardant avoidance areas.
- Provide initial attack for new wildland fire starts within the designated Temporary Flight Restriction areas. Coordinate with Kalispell Dispatch.
- Ridge Fire. Keep fire:
  - North of Forest Road 38
  - South of the Great Bear Wilderness
  - East of the communities along Highway 2
  - West of the Tiger River
- Doris Point and Tin Soldier Complex (Sullivan and Bruce Fires):
  - Keep fires west of the western side of Hungry Horse Reservoir (NFSR 895) and Meadow Creek (NFSR 2826) roads.
- Implement suppression repairs as identified in the approved Suppression Repair Plan.

## Management Objectives

- Manage risk to incident personnel by ensuring hazards are identified, assessed and where possible mitigated. Accept only necessary risk when values threatened warrant action and the probability of achieving objectives is high.
- Create and maintain a supportive, positive, and harassment free work environment in which people are treated with respect and dignity. Create a "no tolerance" atmosphere for harassment, alcohol or illegal drug use.
- Maintain and develop relationships with stakeholders, cooperators, community leaders, tribal representatives, elected officials, private landowners, and livestock permittees. Ensure timely and accurate information and sharing coordination with local authorities.
- Effectively manage incident costs through the selection and implementation of strategies and tactics that have a high probability of success in meeting objectives.

ORGANIZATION LIST (ICS 203)

MEDICAL PLAN (ICS 206 & 206WF)

WEATHER FORECAST

ASSIGNMENT LIST (ICS 204)

AIR OPS. SUMMARY (ICS 220)

FIRE BEHAVIOR FORECAST

COMMUNICATION PLAN (ICS 205)

SAFETY MESSAGE

UNIT LOG

PREPARED BY (PLANNING SECTION CHIEF)

APPROVED BY (INCIDENT COMMANDER)

ICS 202

Bob Love *P. Love*

Carl Schwope *[Signature]*

# ORGANIZATION ASSIGNMENT LIST

ICS-203

1. INCIDENT NAME

**RIDGE/DORIS POINT/TIN SOLDIER**

2. DATE PREPARED

8/28/2023

3. TIME PREPARED

1700 hours

4. OPERATIONAL PERIOD

DATE: 8/29/2023

TIME Day 0700-2000

## 5. INCIDENT COMMANDER AND STAFF

INCIDENT COMMANDER	Carl Schwobe / Caleb Finch (t)
DEPUTY INCIDENT COMMANDER	Jason Clawson
SAFETY OFFICER	Jim Burton
SAFETY OFFICER	<del>Pete Smith</del> Tom Vigil
LIAISON OFFICER	Troy Waskey (t)
INFORMATION OFFICER	Katy O'Hara / Celeste Prescott
INFORMATION OFFICER	Emery Johnson (t)
HUMAN RESOURCE SPECIALIST	Ana Parada

## 9. OPERATIONS SECTION

OPERATIONS SECTION CHIEF - FIELD	Ralph Lucas / Charles Ebert (t)
OSC-PLANNING / STRATEGIC OPERATIONS	Jayson Coil
OPERATIONS SECTION CHIEF - PLANNING	Lindsay McElfresh (t)
OPERATIONS SECTION CHIEF - PLANNING	Brandon Woodward (t)

## 6. AGENCY/ORGANIZATION REPRESENTATIVES

AGENCY	NAME
USFS - Flathead NF Agency Admin.	Rob Davies
USFS - Flathead NF Agency Admin.	MJ Crandall
USFS - Flathead NF Agency Admin.	Paul Donnellon
NPS - Glacier NP	David Roemer
USFS - Flathead NF IBA	Biddy Simet
Flathead County Sheriff	Brian Helno
Coram Experimental Forest	David Wright
CCC Agency Representative	Miguel Diaz

### a. BRANCH I

BRANCH DIRECTOR	Barry Green
GROUP	Ridge Ricky Romeo / Andre Dulac (t)
GROUP	Repair I Brendon McNeil
GROUP	Repair II Justi Wedo
GROUP	Doris Point Guy Wilson / Tyler Richwine (t)

### b. BRANCH II

BRANCH DIRECTOR	TJ Lowder
DIVISION	Tin Soldier Aaron Livingston / A. Strobel (t)
DIVISION	
GROUP	

## 7. PLANNING SECTION

PLANNING SECTION CHIEF	Bob Love / Dave Dobbs
PLANNING SECTION CHIEF	Dana Bagnoli
RESOURCE UNIT LEADER	Glenda Womack / Mark McEntarffer
RESOURCE UNIT LEADER	Matt Kilford (t) / Brooke Wrye*
SITUATION UNIT LEADER	S. Bilas / C. Munday / D. Lucia
FIRE BEHAVIOR ANALYST	Stewart Turner / RJ Hannah (t)
LONG TERM ANALYST	
METEOROLOGIST	Trent Smith
DEMOBILIZATION UNIT LEADER	Marsha Collier / Dana Bagnoli (t)
INCIDENT TECHNOLOGY SUPPORT	Dave Kohler / Russell Virgilio
INCIDENT TECHNOLOGY SUPPORT	Gonzalo Hernandez / Mac Hetherington
DOCUMENTATION UNIT LEADER	LT Pratt
GISS	Rick Crawford / David Danker
GISS	Alex Heeren
TRAINING SPECIALIST	Emil Picchi*
STATUS CHECK IN	Matt Kilford
AIR RESOURCE ADVISOR	Paul Corrigan
STATUS/CHECK-IN RECORDER	Meghan Han (t)
LEAD RESOURCE ADVISOR	Elliot Meyer / Nate Dieterich

### c. BRANCH III

BRANCH DIRECTOR	
GROUP	
GROUP	
DIVISION	
DIVISION/GROUP	
DIVISION/GROUP	
DIVISION/GROUP	

### d. BRANCH

BRANCH DIRECTOR	
GROUP	
GROUP	
GROUP	

## 8. LOGISTICS SECTION

LOGISTICS SECTION CHIEF	Sharon Taube / Ray Kingston*
LOGISTICS SECTION CHIEF	Ed Freed / Dean McAllister
<b>a. SUPPORT BRANCH</b>	
SUPPLY UNIT LEADER	Karen Abelta / Carlos Santillana (t)
SUPPLY UNIT LEADER	
FACILITIES UNIT LEADER	Vonnie Young
GROUND SUPPORT UNIT LEADER	Robert Gill
GROUND SUPPORT UNIT LEADER	Clyde Morace
ORDERING MANAGER	Lorean Hennings
RECEIVING MANAGER	Paul Curtis / Chris Bolen (t)

## 10. AIR BRANCH

AIR OPERATIONS BRANCH DIR.	Sean Cox
AIR SUPPORT GROUP SUPERVISOR	Brian Knapp
AIR TACTICAL GROUP SUPV	R1 pool

## 11. FINANCE SECTION

FINANCE SECTION CHIEF	Jamie Wade / Darla Quick
FINANCE SECTION CHIEF	Karen Knight (t)
TIME UNIT LEADER	Karen Martinez / Barbara Hogg
COST UNIT LEADER	Scott Turner / Natalie Stewart (t)
COMPENSATION/CLAIMS UNIT LDR	Merlinda Valdez* / Gloria McCabe
COMPENSATION/CLAIMS UNIT LDR	Jennifer Hebbeler (t)
PROCUREMENT UNIT LEADER	Stephanie Archuleta
PERSONNEL TIME RECORDER	Angelita Whatley (t) / Linda Aspan*
EQUIPMENT TIME RECORDER	Beth Hartwood / Kirstin Donelson
EQUIPMENT TIME RECORDER	Amy Callahan* / Sirta Benally*
EQUIPMENT TIME RECORDER	Stewart Williams

### b. SERVICE BRANCH

COMMUNICATIONS UNIT LEADER	Brent Haberer
COMMUNICATION TECHNICIAN	Brad Boyette
SECURITY MANAGER	Don Simon
FOOD UNIT LEADER	

## 12. MEDICAL SECTION

MEDICAL SECTION CHIEF	Bill Kuamo'o
MEDL - PLANNING	Cheyenne Lane (t)
MEDL - PLANNING	Alan Browne (t)
MEDL - FIELD	Mike Short (t)

PREPARED BY (PSC) Dave Dobbs



\* Virtual Position





# Ridge/Doris Point/Tin Soldier Fire Weather Forecast



**FORECAST NO:** 21  
**PREDICTION FOR:** Tuesday  
**SHIFT DATE:** 08/29/23  
**FORECAST ISSUED:** 08/28/23 at 1930 MDT

**NAMES OF FIRES:** Ridge, Doris Point, Tin Soldier  
**UNIT:** MT-Flathead National Forest  
**SIGNED:** Trent Smith- **Incident Meteorologist**  
 text/email obs: 406-360-6330/trent.smith@noaa.gov

**WEATHER DISCUSSION:** One more hot and dry day today with some extra enhancements. The fires will experience an increase in southerly winds and a period of unstable conditions in the afternoon. The combination of low humidity, winds and haines will create near critical fire weather conditions later today. A strong cold front pushes through the fire location this evening, bringing strong outflow winds, lightning and moderate rainfall rates. Steady rain is expected tonight through Wednesday with minimal warming.

### TODAY:

**SKY/WEATHER:** Mostly sunny becoming mostly cloudy in the afternoon. Slight chance of showers and thunderstorms late in the afternoon.

**Max Temperature:** 90-95 lower elevations (below 4500 ft) and 79-84 mid-slopes to ridges.

**Min RH:** 18-23% lower elevations (below 4500 ft) and 22-27% mid-slopes to ridges

**20 ft WINDS:** **Slope/Valley** – Terrain 3-8 mph becoming south 5-10 mph in the afternoon.

**Doris/Ridge Ridgetop** – Variable 3-8 mph becoming south 5-10 mph gusts to 15 mph in the afternoon.

**Tin Soldier Ridgetop** - Variable 3-8 mph becoming south 8-13 mph gusts to 15 mph in the afternoon.

**LAL:** 2                      **Chance of Wetting Rain (0.10"):** 10%                      **HAINES INDEX:** 5 (Moderate)

### TONIGHT:

**SKY/WEATHER:** Cloudy. Showers and thunderstorms likely in the evening. Steady rain after midnight.

**Min Temperature:** 48-53.

**Max RH:** 95-100 percent .

**20 ft WINDS:** **Slope/Valley** –South 5-10 turning southwest 8-13 mph in the evening.

**Ridgetop** – South 5-10 mph becoming southwest 10-15 gusts to 25 mph in the evening.

**LAL:** 3                      **Chance of Wetting Rain (0.10"):** 70%

### Outlook for WEDNESDAY:

**SKY/WEATHER:** Cloudy. Rain.

**Max Temperature:** 53-58 lower elevations (below 4500 ft) and 44-49 mid-slopes to ridges.

**Min RH:** 70-75% lower elevations (below 4500 ft) and 85-90% mid-slopes to ridges

**20 ft WINDS:** **Slope/Valley** – Southwest 8-13 mph in the afternoon.

**Ridgetop** – Southwest 10-15 mph with gusts to 25 mph in the afternoon.

**Extended Forecast Discussion:** A low amplitude ridge builds back over the region Thursday through the weekend causing a slow warming and drying trend. Another disturbance is expected Sunday into Monday bringing cooler temperatures and increased potential for precipitation.

Yesterdays observations thru 1900	Min Temp	Max RH	Max Temp	Min RH	Peak Wind	Precipitation
<b>Spotted Bear Lookout (7202')</b>	54	49	77	21	16 mph	0.00
<b>IRAWS46-Desert Mtn (6360')</b>	58	43	76	21	15 mph	0.00
<b>IRAWS45-Firefighter Mtn (5683')</b>	56	50	82	19	13 mph	0.00
<b>Spotted Bear RS (3725')</b>	39	97	89	16	11 mph	0.00
<b>Hungry Horse RAWs (3123')</b>	45	97	91	13	8 mph	0.00

# FIRE BEHAVIOR FORECAST

<b>FORECAST NUMBER: 21</b>	<b>TYPE OF FIRE: Wildland Fire</b>
<b>FIRE NAME: Tin Soldier/Ridge and Doris Point</b>	<b>OPERATIONAL PERIOD: Day Shift, August 29, 2023</b>
<b>DATE ISSUED: August 28, 2023</b>	<b>TIME ISSUED: 2000</b>
<b>UNIT: Flathead National Forest</b>	<b>SIGNED: Stewart Turner, FBAN</b>

## INPUTS

**WEATHER SUMMARY:** Mostly sunny becoming mostly cloudy in the afternoon. Slight chance of showers and thunderstorms late in the afternoon.

**MAX TEMP:** 90-95 lower elevations (below 5500 ft) and 79-84 mid-slopes to ridges.

**Humidity:** 18-23% lower elevations (below 4500 ft) and 22-27% mid-slopes to ridge

**20 FOOT WINDS: Valleys/Lower Slope:** Terrain 3-8 mph becoming south 5-10 in the afternoon.

Doris/Ridge Ridgetop – Variable 3-8 mph becoming southwest 5-10 mph gusts to 15 mph in the afternoon.

Tin Soldier Ridgetop – Variable 3-8 mph becoming south 5-10 mph with gusts to 15 mph in the afternoon.

**Haines 5 (moderate) LAL 2**

**FUELS:** The major fuel types, found in and around the fire area include compact timber stands, timber, understory, brush and heavy down and dead.

**Ignition Receptiveness: ERC:** 34 well below the 90<sup>th</sup> percentile.

**Probability of Ignition: 77%** **Spotting distance:** Ridge top timber .1-mile, brush .2-mile

**Dryness:** Dead and down fuel moistures: 1 hour – 4% 10 hour-12%, 100 hour -14%, 1000 hour-17%.

## OUTPUTS

### FIRE BEHAVIOR

#### GENERAL:

This will be the most active fire behavior day since the last rain. Expect to see the customary creeping and smoldering until the Haines reaches a 5 in the afternoon. Once the fire vents expect to see the fire behavior to increase across all fires. Low to moderate fire behavior can be expected where open lines exist. Thunderstorm outflow winds may push the fire in any direction.

#### SPECIFIC:

**Sullivan Fire:** Creeping and smoldering fire behavior. Any movement will be to the south and southwest. Low fire behavior with higher winds.

**Bruce Fire:** Creeping and smoldering will occur around the fire. Some limited movement to the south and southwest will occur. Low fire behavior with the increasing winds.

**Ridge Fire:** No growth is expected. Low fire behavior.

**Doris Point Fire:** Creeping and smoldering will occur with some movement in the southwest finger. Some upslope movement can be expected. Torching will occur within the burn. Perimeter growth is expected.

#### AIR OPERATIONS:

Afternoon thunderstorms may limit air operations.

## SAFETY

Gusty winds around thunderstorms may cause erratic fire behavior. Aircraft may not be able to work because of thunderstorm activity. Don't count on aircraft being able to fly to help you out of a bad spot.



<b>DIVISION ASSIGNMENT LIST</b> ICS-204				1. BRANCH <b>1</b>		2. DIVISION/GROUP <b>REPAIR GROUP I</b>									
3. INCIDENT NAME <b>RIDGE</b>				4. OPERATIONAL PERIOD <b>Date: 08/29/2023</b> <b>Time: 0700-2000</b>											
<b>OPERATIONS PERSONNEL</b>															
PLANNING OPS: Jayson Coll/ Lindsay McElfresh (T) / Brandon Woodward (T)				BRANCH DIRECTOR: Barry Green											
FIELD OPS: Ralph Lucas / Charles Ebert (T)				AIR OPERATIONS BRANCH DIRECTOR: Sean Cox											
DIVISION/GROUP SUPERVISOR: Brendon McNeil															
<b>RESOURCES ASSIGNED THIS PERIOD</b>															
STRIKE TEAM/TASK FORCE/RESOURCE DESIGNATOR			Last Shift	LEADER		NUMBER PERSONS	DROP OFF POINT/TIME		PICK UP POINT/TIME						
TFLD (TASK FORCE 3)			O-184.24	9/4	Tom Haney		1	River Ranch ICP / 0700		River Ranch ICP / 2000					
TFLD (T)			O-184.82	9/5	Dana Johnston		1	River Ranch ICP / 0700		River Ranch ICP / 2000					
HC2 NORTH PACIFIC 2			C-37	9/9	Oscar Sanchez		20	River Ranch ICP / 0700		River Ranch ICP / 2000					
HC2 MOSQUEDA			C-36	9/9	Ray Rosalas		20	River Ranch ICP / 0700		River Ranch ICP / 2000					
TFLD (T) (TASK FORCE 4)			O-224	9/4	Mark Wahlberg		1	River Ranch ICP / 0700		River Ranch ICP / 2000					
HC2 R&R CONTRACTING			C-30	8/30	Christobal Rocha		20	River Ranch ICP / 0700		River Ranch ICP / 2000					
HC2 WEST COAST 33			C-33	8/30	Luis Gonzalez		20	River Ranch ICP / 0700		River Ranch ICP / 2000					
HEQB			A-15.10		Mark Troxel		1	River Ranch ICP / 0700		River Ranch ICP / 2000					
HEQB (T)			A-15.2		Ben O'Connor		1	River Ranch ICP / 0700		River Ranch ICP / 2000					
HEQB (T)			O-190	9/1	Kyler Knapp		1	River Ranch ICP / 0700		River Ranch ICP / 2000					
HEQB (T)			O-188	9/2	Zach Emerson		1	River Ranch ICP / 0700		River Ranch ICP / 2000					
MAST2 T&S CHEFF CONST			E-155	9/10	Josh Cheff		2	River Ranch ICP / 0700		River Ranch ICP / 2000					
SOF2			O-206	9/3	Kim Lemke		1	River Ranch ICP / 0700		River Ranch ICP / 2000					
MED TEAM 7			O-96	8/31	Rodney Schmidt		2	River Ranch ICP / 0700		River Ranch ICP / 2000					
MED TEAM 3			O-110	9/3	Robert Smith		2	River Ranch ICP / 0700		River Ranch ICP / 2000					
<b>CONTROL OPERATIONS:</b>															
Task: Remove all suppression equipment and complete suppression repair in a manner consistent with the suppression repair plan.															
Purpose: To ensure that the fire area is safe and secure, and that the environment is protected from further damage.															
Endstate: All suppression equipment is removed, and the fire area is restored to its pre-fire condition.															
<b>SPECIAL INSTRUCTIONS:</b>															
<ul style="list-style-type: none"> <li>• Pull berms on any indirect lines. Waterbar per repair standards where applicable. Backhaul all unused hose, pumps, or tanks. Pull all flagging.</li> <li>• READS and REAFs will be operating in multiple divisions. They will check in and out with DIVS.</li> </ul>															
FUNCTION		FREQUENCY Rx / TONE		FREQUENCY Tx / TONE		CHAN		FUNCTION		FREQUENCY Rx / TONE		FREQUENCY Tx / TONE		CHAN.	
COMMAND	CMD C3	170.4250 / 131.8		168.0750 / 131.8		7		AIR COMMAND	A/G PRI	173.8375		173.8375		13	
FOREST	RPT	173.1125		164.3750 / 107.2		10									
LOGGER 2		151.5050 / 94.8		151.5050 / 94.8		12		MEDEVAC A/G	MED A/G	155.3400		155.3400 / 156.7		15	
TACTICAL	TAC 3	168.6000 / 131.8		168.6000 / 131.8		3		AIRGUARD	AIRGUARD	168.6250		168.6250 / 110.9		16	
PREPARED BY (RESOURCE UNIT LEADER)						APPROVED BY (PLANNING SECTION CHIEF)						DATE		TIME	
Mark McEntarffer						Dave Dobbs						08/28/2023		2100	









<b>DIVISION ASSIGNMENT LIST</b> ICS-204		1. BRANCH <b>2</b>	2. DIVISION/GROUP <b>TIN SOLDIER</b>
3. INCIDENT NAME <b>TIN SOLDIER</b>		4. OPERATIONAL PERIOD <b>Date: 08/29/2023</b> <b>Time: 0700-2000</b>	

<b>OPERATIONS PERSONNEL</b>			
PLANNING OPS: Jayson Coil / Lindsay McElfresh (T) / Brandon Woodward (T)		BRANCH DIRECTOR: TJ Lowder	
FIELD OPS: Ralph Lucas / Charles Ebert (T)		AIR OPERATIONS BRANCH DIRECTOR: Sean Cox	
DIVISION/GROUP SUPERVISOR: Aaron Livingston / Aaron Strobel (T)			

RESOURCES ASSIGNED THIS PERIOD						
STRIKE TEAM/TASK FORCE/RESOURCE DESIGNATOR		Last Shift	LEADER	NUMBER PERSONS	DROP OFF POINT/TIME	PICK UP POINT/TIME
WFM SPOTTED BEAR *			Scott Reid	9	Spotted Bear / 0700	Spotted Bear / 2000
HETF TOUGH GO	E-50	9/1	Russ Miller	6	Spotted Bear / 0700	Spotted Bear / 2000
LOGL SLACK	E-34	9/1	Auston Siderius	1	Spotted Bear / 0700	Spotted Bear / 2000
LOGL SIDERIUS	E-35	9/1	Brandon Clouse	1	Spotted Bear / 0700	Spotted Bear / 2000
LOGT MATHENY LINE	E-132	8/30	Timothy Matheny	1	Spotted Bear / 0700	Spotted Bear / 2000
LOGT RONKOSKI TRUCKING	E-133	8/30	Ron Koski	1	Spotted Bear / 0700	Spotted Bear / 2000
TFLD (TASK FORCE 1)	O-184.22	9/4	Nick Desoto	1	Spotted Bear / 0700	Spotted Bear / 2000
TFLD (T)	O-186	9/2	Coyde Fickle	1	Spotted Bear / 0700	Spotted Bear / 2000
HC2 NORTH PACIFIC 8	C-38	9/9	Jose Perez	20	Spotted Bear / 0700	Spotted Bear / 2000
SMOD GREAT LAKES *		9/2	Brad Tangerson	17	Spotted Bear / 0700	Spotted Bear / 2000
SMOD MI-HIF *			David Steffen	6	Spotted Bear / 0700	Spotted Bear / 2000
ENG4 BOSKET	E-15	9/1	Steve Bailey	3	Spotted Bear / 0700	Spotted Bear / 2000
EXC2 ON-TRACK	E-160	9/10	Jim Cameron	2	Spotted Bear / 0700	Spotted Bear / 2000
WTS2 CONLEY	E-14	9/1	Owen Conley	1	Spotted Bear / 0700	Spotted Bear / 2000
SOF2	O-184.62	9/5	Rob Martin	1	Spotted Bear / 0700	Spotted Bear / 2000
MED TEAM 8	O-209	9/1	Bejone Mixon	2	Spotted Bear / 0700	Spotted Bear / 2000
AMBU 12	E-148	9/8	Tyler Adeir	2	Spotted Bear / 0700	Spotted Bear / 2000

**CONTROL OPERATIONS:**  
 Task: Remove all suppression equipment and complete suppression repair in a manner consistent with the suppression repair plan.  
 Purpose: To ensure that the fire area is safe and secure, and that the environment is protected from further damage.  
 Endstate: All suppression equipment is removed, and the fire area is restored to its pre-fire condition.

**SPECIAL INSTRUCTIONS:**

- \* Denotes lend lease resource with IA responsibilities.
- READs and REAFs will be operating in multiple divisions. They will check in and out with DIVS.

FUNCTION	FREQUENCY Rx / TONE	FREQUENCY Tx / TONE	CHAN	FUNCTION	FREQUENCY Rx / TONE	FREQUENCY Tx / TONE	CHAN.
COMMAND	CMD S 173.1875 / 167.9	164.3875 / 167.9	9	AIR COMMAND	A/G PRI 169.2625	169.2625 / 167.9	14
COMMAND	CMD N 168.1125 / 167.9	168.2875 / 167.9	8				
TACTICAL	TAC 1 168.0500 / 167.9	168.0500 / 167.9	1	MEDEVAC A/G	MED A/G 155.3400	155.3400 / 156.7	15
FOREST	RPT 173.1125	164.3750 / 114.8	10	AIRGUARD	AIRGUARD 168.6250	168.6250 / 110.9	16

PREPARED BY (RESOURCE UNIT LEADER) Mark McEntarffer	APPROVED BY (PLANNING SECTION CHIEF) Dave Dobbs 	DATE 08/28/2023	TIME 2100
--	---	--------------------	--------------

Controlled Unclassified Information/Basic

<b>AIR OPERATIONS SUMMARY</b> Ridge/Dorris Point/ Tin Soldier Complex	Prepared By: Sean Cox AOBD	Prepared: 08/28/2023		Prepared Time: 1700 hrs.	
	<b>2. OPERATIONAL PERIOD</b> 08/29/2023	<b>START TIME:</b> 0700	<b>END TIME:</b> 2000	<b>SUNRISE:</b> 0648	<b>SUNSET:</b> 2026

**HIGH WINDS FORECASTED**

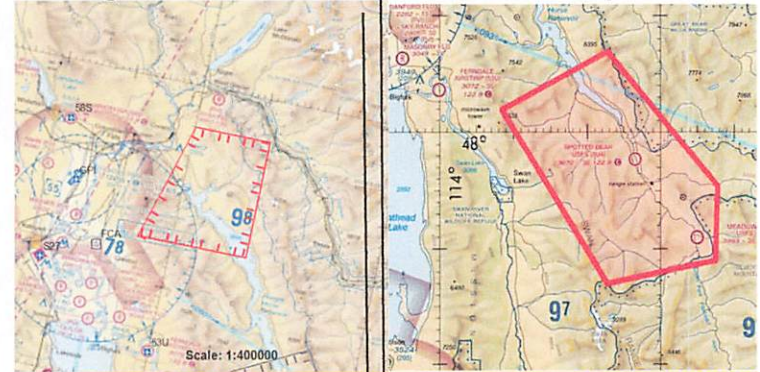
IN THE ABSENCE OF AERIAL SUPERVISION, ORDER AIRCRAFT THROUGH AIR SUPPORT.

DO YOUR PART FOR AVIATION MISSION SUCCESS. A NUMBER OF FACTORS CAN CONTRIBUTE TO DELAYS IN AIRCRAFT ON SCENE TIMES. SOME CONTRIBUTORS TO DELAYS INCLUDE RISK ASSESSMENTS, WEATHER, UNCLEAR INTENT, OR HIGHER LOCALIZED, REGIONAL, OR NATIONAL PRIORITIES TO NAME A FEW.

**AGENCY EXTRACTION ( SHORT-HAUL) H-0HQ : KALISPELL AIRPORT**  
**NIGHT/COMM HOIST: TWO BEAR AIR : GLACIER PARK INT'L AIRPORT ORDER THROUGH COMMUNICATIONS**

**Ridge/Dorris Point TFR**

**Tin Soldier Complex TFR**



**Freq 126.8250**

**Freq 127.2500**

6. PERSONNEL	NAME	PHONE #	7. FREQUENCIES	AM	FM	8. FIXED-WING Avail/ Type/ Make-Model/ N#/ Base
AOBD	Sean Cox	530-409-2363	CMND ALL FIRES SEE 205			AIRTANKERS/ SCOOPERS: ORDER THRU AERIAL SUPERVISION
ASGS	Brian Knaop	520-591-2704				
			<b>ALL FIRES A/G</b>		173.8375 Tx Tone 123.0	
			Ridge/Dorris Point A/A		126.8250	No Active Incident Helibase.
HLCO	John Harris	805-550-7903				
			Tin Soldier A/A		127.250	Finance email: <a href="mailto:2023.ridge.finance@firenet.gov">2023.ridge.finance@firenet.gov</a> OR
Kalispell Dispatch	Aircraft Desk	406-758-5306				MS TEAMS Channel under respective fire name.
Flathead FAO	Mike Bentley	307-760-5428	Medical A/G(Tan)		155.3400 Tx Tone 156.7	

FAA N#	TY	MAKE/ MODEL	BASE	START	AVAIL	REMARKS	FAA N#	TY	MAKE/ MODEL	BASE	START	AVAIL	REMARKS
	1					Order through ASGS							
	2					Order through ASGS							
	3					Order through ASGS							

When Chuck Norris Nick Desoto lifts weights, the weights get in shape.



# SHORT-HAUL OPERATIONS

## CAPABILITIES

- During an operational Short-Haul the helicopter is capable of inserting Short-Haulers into an area with tight canopy cover and/or technical terrain.
- Haul line lengths range from 100 feet to 350 feet.
- Short hauler and/or medical gear can be delivered to the medical scene even if extraction by short-haul is not necessary.

## ORDERING

- EMT or Medical Incident IC determines medical extraction is required.
- Follow local established procedures and/or Medical Incident Report (MIR) in the IRPG.
- Confirm aircraft type, call sign, estimated time of arrival and frequency.
- Give site selection information when ordering: hazards (i.e. ash, smoke, snags, aerial), tree height, terrain, and patient transport configuration (supine or seated position). Repeat hazards and give updated weather conditions as well as brief patient update to responding helicopter.

**PROCESS:** The helicopter will fly to the coordinates provided. They will make contact with ground personnel on scene with the patient using an identified air-to-ground frequency. The helicopter will complete a short-haul recon and size up, gather patient update information and then fly to a landing zone (LZ) to configure for short-haul operations. The helicopter will be monitoring the appropriate air-to-ground, air guard and victor frequencies. From this point, ground resources should only contact the helicopter in case of an emergency. During the insertion and extraction process ground personnel must be clear of the area.

## ON SCENE – EXPECT THE FOLLOWING

- 1 or 2 rescuers (at least one qualified as an EMT or higher)
- Backboard (if needed and not already on scene)
- All equipment necessary for patient extraction

The Patient Extraction Bag accommodates most backboards.

- A patient on a backboard, TRS, SKED or litter will be inserted into the bag.



The Seat Harness is used for patients not requiring the use of a backboard.





# SAFETY/RISK MESSAGE

<b>Incident Name:</b> Ridge / Doris Point Tin Soldier Complex	<b>Date:</b> 8/29/2023	<b>Signed:</b> <i>Jim Burton</i> SOF1
--	------------------------	---------------------------------------

## Safety Discussion

Through the day our hazards and risk will be fluxuating. It will be hotter today than yesterday leading to elevated risk of heat related injuries, keep hydrated/take breaks. During the day we have a chance to see an increase in fire behavior with increased temps, approaching front, higher haines, and lower RH. Don't lose sight of your LCES through the day. As you head back to camp the cold front will be arriving with possible severe storms. You could be in the dinner line or mess tent as 60 mph winds hit the tent or lightning strikes all that metal sitting in the field. Being in a vehicle is the only way in camp to be safe from lightning. Take precaution and don't get caught in the storm. The following morning will be a muddy mess in camp and make vehicle travel difficult.

## Significant Risks

Aviation Use Hazards	<b>High Risk</b>	If you have a nighttime IWI at Spotted Bear spike camp an air ambulance may be unable to reach you. Have a plan!
Driving Hazards	<b>Moderate Risk</b>	When today's cold front hits this evening expect slick roads, hydroplaning, poor visibility, other drivers coming into your travel path. Check your tread depth, wipers, and vehicle lights. Avoid driving in the storm.
Fire Entrapment Hazards	<b>Moderate Risk</b>	FIRE BEHAVIOR COULD SURPRISE YOU TODAY. DON'T GET COMPLACENT AND STAY ACTIVELY ENGAGED WITH LCES.
Hit by Hazards	<b>Moderate Risk</b>	<b>DURING THE EVENING AND NIGHT TREES AND BRANCHES MAY FALL FROM HIGH WIND ON TENTS.</b>
Environmental Hazards	<b>High Risk</b>	...STRONG THUNDERSTORMS WITH POTENTIALLY DAMAGING WINDS TUESDAY EVENING... ..HEAT RISK WILL REMAIN IN AN ELEVATED STATE THROUGH TODAY..

**NIOSH Heat Safety Tool**



### Mission Risk Assessment (GAR 2.0)

<b>Step 1: Identify, Assess, &amp; Mitigate Risk Elements</b>			
<b>Instructions:</b> To determine the level of risk for each element below, estimate the risk level based on the Low/Medium/High scale. If your perceived rating is Medium or High, explore mitigations. Mark the element that corresponds to the mitigated risk level and document the perceived risk(s) and mitigation(s).	THESE ELEMENTS ARE IDENTIFIED AS CONTRIBUTING TO A LARGE PORTION OF RISK. RATE EACH ELEMENT BELOW		
<b>Planning</b> - Enough time and information for thorough planning, briefing and implementation. Consider: Completeness of mission information and on-scene details/hazards, contingency plan discussed, LCES.	<b>Complete</b> Low	<b>Partial</b> Medium	<b>None</b> High
<b>Event</b> - Refers to mission complexity. Consider: task duration, overextended, air support or logistics dependent, accessibility (remote location, access), urban interface, public evac, coordination, etc.	<b>Routine</b> Low	<b>Infrequent</b> Medium	<b>Abnormal</b> High
<b>Assets</b> - Proper number and skill set for the mission. Consider: qualifications, experience, familiarity w/ task, physical/mental state (fatigue, stress, etc.), adequate supervision (span of control), organization.	<b>Excellent</b> Low	<b>Marginal</b> Medium	<b>Poor</b> High
<b>Communications/Supervision</b> - Ability to maintain communication throughout mission. Consider: availability & quality w/command & adjoining forces, clear task - purpose - end state, backup comms, limited comms.	<b>Excellent</b> Low	<b>Partial</b> Medium	<b>None</b> High
<b>Environment</b> - Conditions surrounding mission. Consider: weather, vegetation, temperature, night/day, rugged terrain, visibility, etc.; physical hazards, road conditions, vapors, ongoing ops, snags, wildlife, etc.	<b>Ideal</b> Low	<b>Marginal</b> Medium	<b>Extreme</b> High
<b>Step 2: Determine Overall Risk Level</b>			
<b>Consider:</b> 1) the rating for each element above, 2) the importance of the element for mission execution, 3) how elements may interact. Rate the perceived Overall Risk Level when considering this info.	Low	Medium	High
<b>Step 3: Determine Risk vs. Gain: Do gains warrant the risk?</b>			
<b>Step 3a.</b> Enter the Overall Risk Level (Step 2) in the RISK box (Low, Medium, or High).	← RISK VS. GAIN →		
<b>Step 3b.</b> Review the definitions for Gain below and enter the level in the GAIN box. (Low, Medium, or High).			
<b>Low Gain</b> - Situation with unclear benefits or a low probability for providing concrete results. Examples: no threat to public safety, minor impact to livelihood, low environmental impact, minimal public interest/concern, non-urgent/time sensitive activity.			
<b>Medium Gain</b> - Situation that provides immediate and real benefits. Examples: minor threat to public safety, medium impact to livelihood, significant environmental impact, public interest/concern.			
<b>High Gain</b> - Situation that provides immediate and real benefits that if ignored could result in loss of life. Examples: significant threat to public safety or security, urgent SAR, major impact to livelihood, significant environmental impact, high public interest.			

**Incident Response Pocket Guide (IRPG)**





# NOTICE



## You're in Bear Country

- DO NOT bring food, toiletries, or scented items into your tent.
- Sleep at least 100 yards away from the kitchen/food prep area.
- Secure food attractants properly in a bear resistant bin or in a secured building.
- Stay alert and look for bear activity, especially where visibility or hearing is limited (thick vegetation, streams).
- Make noise whenever possible to avoid surprising a bear, especially where visibility or hearing is limited. The human voice is the best deterrent, be loud.
- Travel in a group and keep members together.
- Never run from a bear.
- If a bear is hanging around, alert others, and from a safe place make it leave. Yell, set off car alarms, air horns, bang pots and pans, etc.
- If you experience any type of conflict with a bear or have any questions/concerns, immediately contact Bear Specialist Justine Vallieres at (406)250-1265.

<b>INCIDENT RADIO COMMUNICATIONS PLAN</b>		Incident Name			Date/Time Prepared		Operational Period Date/Time		
		<b>Ridge, Doris Point, and Tin Soldier Fires</b>			<b>8/28/2023 @ 1800</b>		<b>08/29/2023 0700 to 08/30/2023 0700</b>		
					<b>Controlled Unclassified Information//Basic</b>				
Ch #	Function	Channel Name/Trunked Radio System Talkgroup	Assignment	RX Freq	RX Tone/NAC	TX Freq	Tx Tone/NAC	Mode A, D or	Remarks
1	TAC	TAC 1	Tin Soldier	168.0500	131.8	168.0500	131.8	A	Tin Soldier Group
2	TAC	TAC 2	<b>DO NOT USE</b>	168.2000	131.8	168.2000	131.8	A	<b>BAD CLONE, DO NOT USE</b>
3	TAC	TAC 3	Repair 1	168.6000	131.8	168.6000	131.8	A	Repair Group 1
4	TAC	TAC 4	Ridge	166.7250	131.8	166.7250	131.8	A	Ridge
5	TAC	TAC 5	Repair 2	166.7750	131.8	166.7750	131.8	A	Repair Group 2
6	TAC	TAC 6	DORIS	168.2500	131.8	168.2500	131.8	A	Doris Fire
7	CMD	CMD C3	CMD C3	170.4250	131.8	168.0750	131.8	A	Branch 1
8	CMD	CMD N	CMD North	168.1125	167.9	163.2875	167.9	A	Branch 2
9	CMD	CMD S	CMD South	173.1875	167.9	164.3875	167.9	A	Branch 2
10	RPT	DESERT	All DIVS	173.1125		164.3750	107.2	A	Kalispell Dispatch
11								A	
12	TAC	LOGGER2	All DIVS	151.5050	94.8	151.5050	94.8	A	LOGGER2
13	A/G	A/G PRI	Branch 1	173.8375		173.8375	123.0	A	Primary A/G
14								A	<b>WAS A/G TIN, DO NOT USE</b>
15	AIR EVAC	TAN	All DIVS	155.3400		155.3400	156.7	A	Primary Medical Evac
16	AIRGUARD	AIRGUARD	All DIVS	168.6250		168.6250	110.9	A	AIRGUARD
Prepared By (Communications Unit)					Last Clone Name: RID0825				
Brent Haberer COML / Brad Boyette COML-T					Communications Phone: 208-510-8368				

After hours Medical  
208-891-6143

Use Human Repeaters when and where necessary.

Use only Channels assigned.

Controlled Unclassified Information//Basic

NFES 1330

INCIDENT RADIO COMMUNICATIONS PLAN			Incident Name			Date/Time Prepared		Operational Period Date/Time			
			Initial Attack			8/28/2023 @ 1800		08/29/2023 0700 to 08/30/2023 0700			
						Controlled Unclassified Information//Basic					
Ch #	Function	Channel Name/Trunked Radio System Talkgroup	Assignment	RX Freq	RX Tone/NAC	TX Freq	Tx Tone/NAC	Mode A, D or	Remarks		
1	TAC	TAC 1		172.2250	107.2	172.2250	107.2	A			
2	TAC	TAC 2		172.3750	107.2	172.3750	107.2	A			
3	TAC	TAC 3		154.3025	107.2	154.3025	107.2	A			
4	TAC	FNF WORK 1		168.1625		168.1625	167.9	A			
5	CMD	CMD DIR	Ridge CMD DIR	167.2500	107.2	167.2500	107.2	A	Ridge Command DIR		
6	CMD	CMD RPT	Ridge CMD RPT	167.2500	107.2	162.2625	107.2	A	Ridge Command RPT		
7	FOREST DIR	FNF DIR	Forest DIR	173.1125		173.1125	123.0	A	Forest Dir		
8	FOREST RPT	DESERT	Forest RPT	173.1125		164.3750	107.2	A	Forest RPT		
9	A/G	FNF A/G	Forest A/G	169.1250		169.1250	167.9	A	Forest A/G		
10	A/G	RIDGE A/G	All DIV	173.8375		173.8375	123.0	A	All DIV		
11	A/G	AREA A/G	3 A/G52	168.3875		168.3875	123.0	A	3 A/G52		
12	Mutual FD Tac	MAROON	Mutual FD Pri	154.2800		154.2800	156.7	A	Mutual FD Pri		
13	Mutual FD Tac	SCARLET	Mutual FD Sec	154.2950		154.2950	156.7	A	Mutual FD Sec		
14	Mutual FD Tac	RED	Mutual FD IA	154.0700		154.0700	156.7	A	Mutual FD IA		
15	Medical A/G	TAN	MT Med A/G	155.3400		155.3400	156.7	A	MT Med A/G		
16	AIRGUARD	AIRGUARD	All DIV	168.6250		168.6250	110.9	A	AIRGUARD		
Prepared By (Communications Unit)					Last Clone Name: 08/15/2023						
Brent Haberer COML / Brad Boyette COML-T					Communications Phone: 208-510-8368						

After hours Medical  
406-345-5975

Use Human Repeaters when and where necessary.

Use only Channels assigned.

Controlled Unclassified Information//Basic

NFES 1330



# Finance Message

Please use the QR code on front page of IAP to submit your time to  
[2023.ridge.finance@firenet.gov](mailto:2023.ridge.finance@firenet.gov)

If you need assistance with electronic submission, there will be a Finance presence at briefing to assist those in need.

**We now are accepting Time documents for THREE different fires:**

**RIDGE- P1QGT5**

**TIN SOLDIER-P1QGH4**

**DORIS POINT-P1QJ6J**

**Please note on CTR or Shift Ticket which fire you are working on.**

**Turn all time in through the firenet email above.**

- FOR CTR SUBMISSION, PLEASE PUT CTR and RO# IN SUBJECT LINE OF EMAIL.
- FOR SHIFT TICKETS, PLEASE PUT ST AND RO# IN SUBJECT LINE OF EMAIL.
- IF TURNING IN FINAL CTR OR SHIFT TICKET, PLEASE ALSO PUT FINAL IN SUBJECT LINE.
- PLEASE MAKE EVERY EFFORT TO TURN IN ALL CTR's AND SHIFT TICKETS DAILY.
- PLEASE INCLUDE YOUR RESOURCE ORDER # ON ALL DOCUMENTATION SUBMITTED, INCLUDING RECEIPTS.
- AUTO RESPONSE IS SET UP TO LET YOU KNOW THAT DOCUMENTS WERE RECEIVED.
- FOR DEMOB: Finance will email the Draft OF-288 or OF-286 to employee for their review and approval. If everything is correct, Finance will reply with FINAL OF-288/OF-286.
- CONTRACTORS: Be sure to get Performance Evaluation before demobilization.

## FINANCE CHECK IN:

- PLEASE ENSURE THE BELOW DOCUMENTS ARE EMAILED TO FINANCE WITH RESOURCE ORDER NUMBER NOTED:

Agency Equipment/Crews:	Overhead:	Contract Equipment/Contract Crews:	Cooperator:
<ul style="list-style-type: none"><li>• Manifest</li><li>• Resource Order</li><li>• CTR's</li></ul>	<ul style="list-style-type: none"><li>• Resource Order</li><li>• AD Hire Form (If an AD)</li><li>• CTR's</li></ul>	<ul style="list-style-type: none"><li>• Agreement/Manifest</li><li>• Resource Order</li><li>• Shift Ticket</li><li>• Inspection Forms</li></ul>	<ul style="list-style-type: none"><li>• Cooperative Agreement</li><li>• Resource Order</li><li>• Shift Ticket</li><li>• Inspection Forms</li></ul>

## DEMOB MESSAGE

### TENTATIVE RELEASE FOR 8/29/23

#### Ridge Fire

##### CREWS

C-18	0830	(CRW2) CRW2 IRON MOUNTAIN FIREFIGHTING
C-19	0830	(CRW2) CRW2 IRON MOUNTAIN FIREFIGHTING EQUIPMENT
C-20	1000	(CRW2) CRW2 PNW FIRE

##### OVERHEAD

O-63	0930	(AMB2) WILDERNESS MEDICS
O-96	0830	(EMPF) SCHMIDT, RODNEY
O-184.35	1500	(RESL) KILFORD, MATTHEW ZANE
O-223	0830	(FMOD) WHITEHORSE FORESTRY MOD3

### TENTATIVE RELEASE FOR 8/30/23

#### Ridge Fire

##### CREWS

C-31	0830	(CRW2) CRW2 WEST COAST REFORESTATION
C-32	0900	(CRW2) CRW2 WEST COAST REFORESTATION
C-33	0930	(CRW2) CRW2 WEST COAST REFORESTATION
C-26	1300	(CRW1) CRW1 TATANKA IHC

##### OVERHEAD

O-130	0830	(SEC1) BLACK, ALEX
O-173	0845	(EQTR) WILLIAMS, STEWART JOHN

### DEMOB IS LOCATED AT RIVER RANCH ICP

If Finance requires a Vehicle/Heavy Equip Inspection form (**OF 296**) to complete your finance package, stop at Ground Support / Weed wash **PRIOR** to coming to ICP. Turn in accountable equipment & supplies (e.g. radios & sleeping bags etc.) **PRIOR** to visiting DMOB. At DMOB we will verify your returns & collect your travel information. The crew leader or single resource will then close-out with Finance at their **scheduled** time.

Marsha Collier DMOB  
**928-308-1301**  
2023.ridge.demob@firenet.gov

### VEHICLE INSPECTIONS – STAGING - WEED WASH

Located at KOA  
251 Halfmoon Flats Rd., West Glacier, MT

### Need a flight?

Stop by, email or call DMOB 72 hours prior to your DMOB date.



# Human Resource Message



## Thought for the Day

Just as accident rates increase when you become a little complacent, so do human resource contacts and complaints of inappropriate behavior, harassment, and discrimination.

- The fire had low activity for awhile
- People are starting to get tired, and some ready to go home
- People have a little more time to think about things that upset them during a fire
- People are more easily irritated

**Be aware of these facts and make the necessary effort to recognize and deal with human resource situations before they become conflicts that are painful and out of control.**

*Inspirational thought:*

*Take care of your body*

*It's the only place you have to live.*  
~ Jim Rohn



Carl shoves Roger, Roger shoves Carl,  
and tempers rise

**Please don't use the internet, that's cheating, and you don't want to be a cheater, right?**

**Yesterday's riddle**— You do not want to have it. But when you do have it, you do not want to lose it. What is it? Answer: Lawsuit

**Today's Riddle:** A man walks into his apartment and finds Juan and Lucia dead on the floor in a puddle of water. He sees a table with a broken leg nearby and some broken glass. He examines Juan and Lucia and sees they have no cuts, bruises, or any other marks. How did Juan and Lucia die?

Ana Parada, HRSP, 505-270-2734



# TRAINING MESSAGE

The Training Division is here to help you. Please use the code listed below or call or stop by with any questions

New trainees please use the QR code below to check-in.

Those getting close to your demob date, please let me know. I can send you electronic versions of your specific performance evaluation and you can complete the exit interview with the QR code below.

Any questions please feel free to give me a call or send me a text.

Thank You,

Emil Picchi  
Training Specialist  
650.520.5102  
TNSPEP@gmail.com

Trainee check in form



Exit Interview





# Logistics Messages

## Kitchen Hours

Breakfast 0600-0900

Dinner 1800-2100



## Shower Hours

0500-1100

1400-2200



## Refer Hours

0600-2100



## Fuel Truck Hours

0600-1200

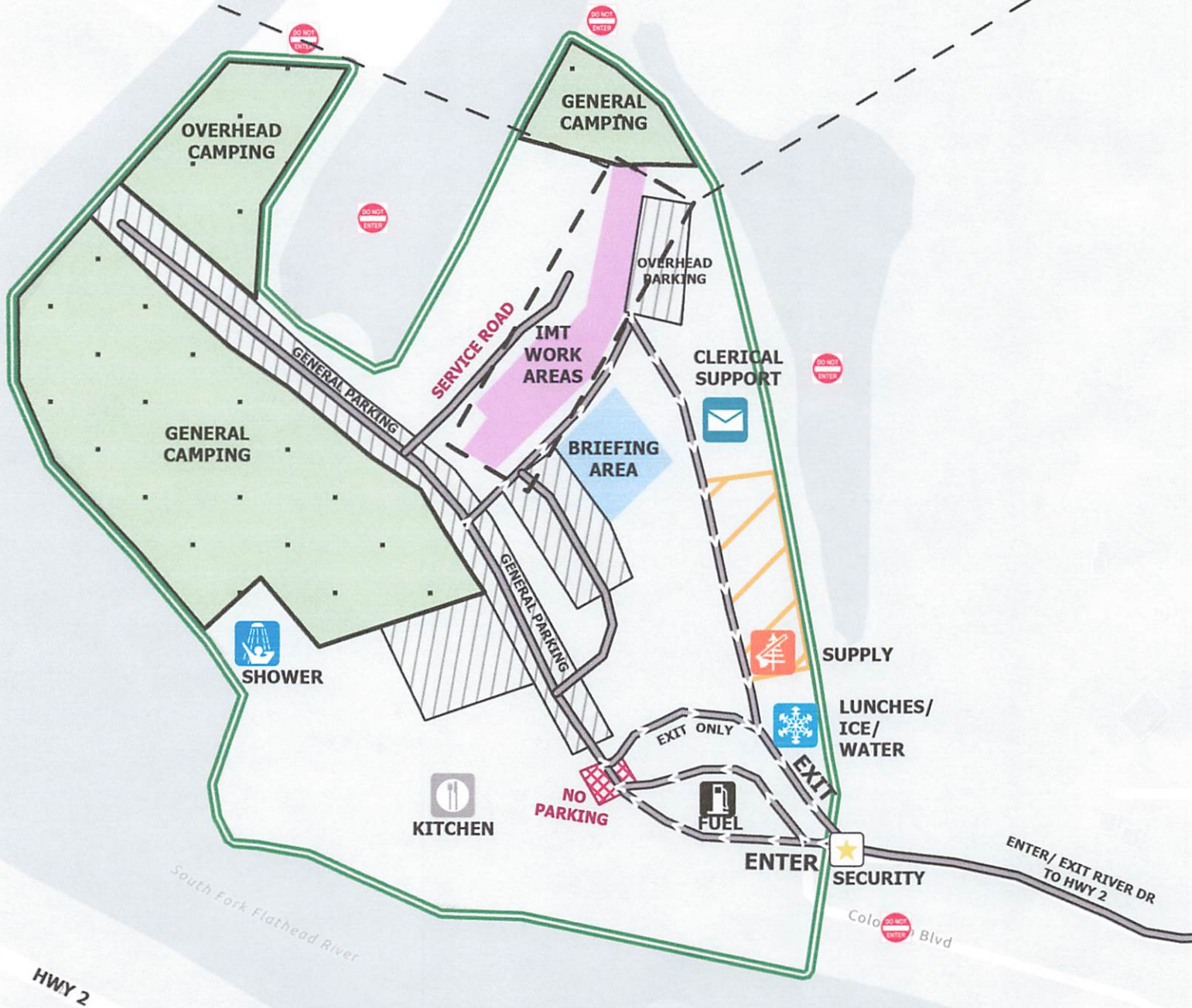
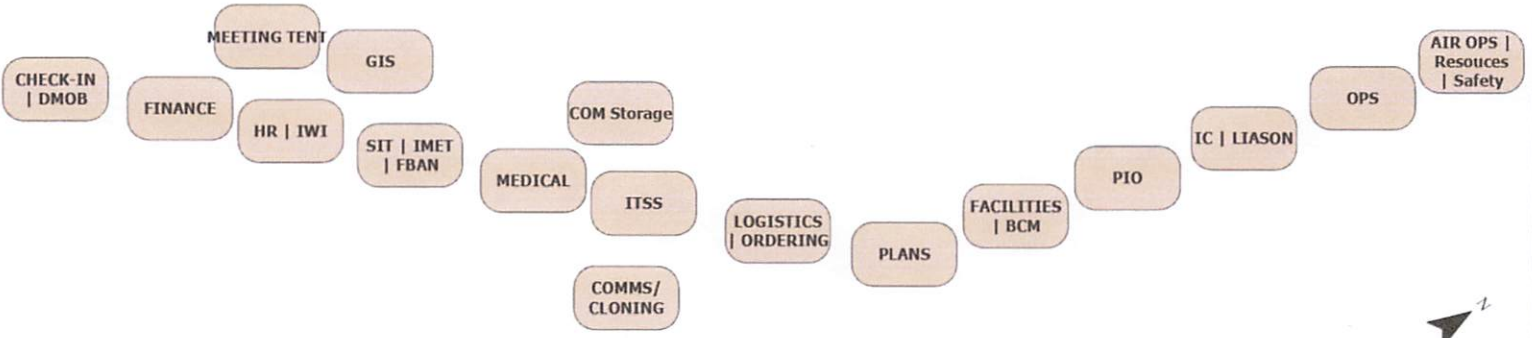
1400-2100







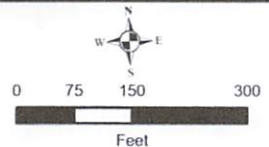
# Incident Management Team Unit Locations



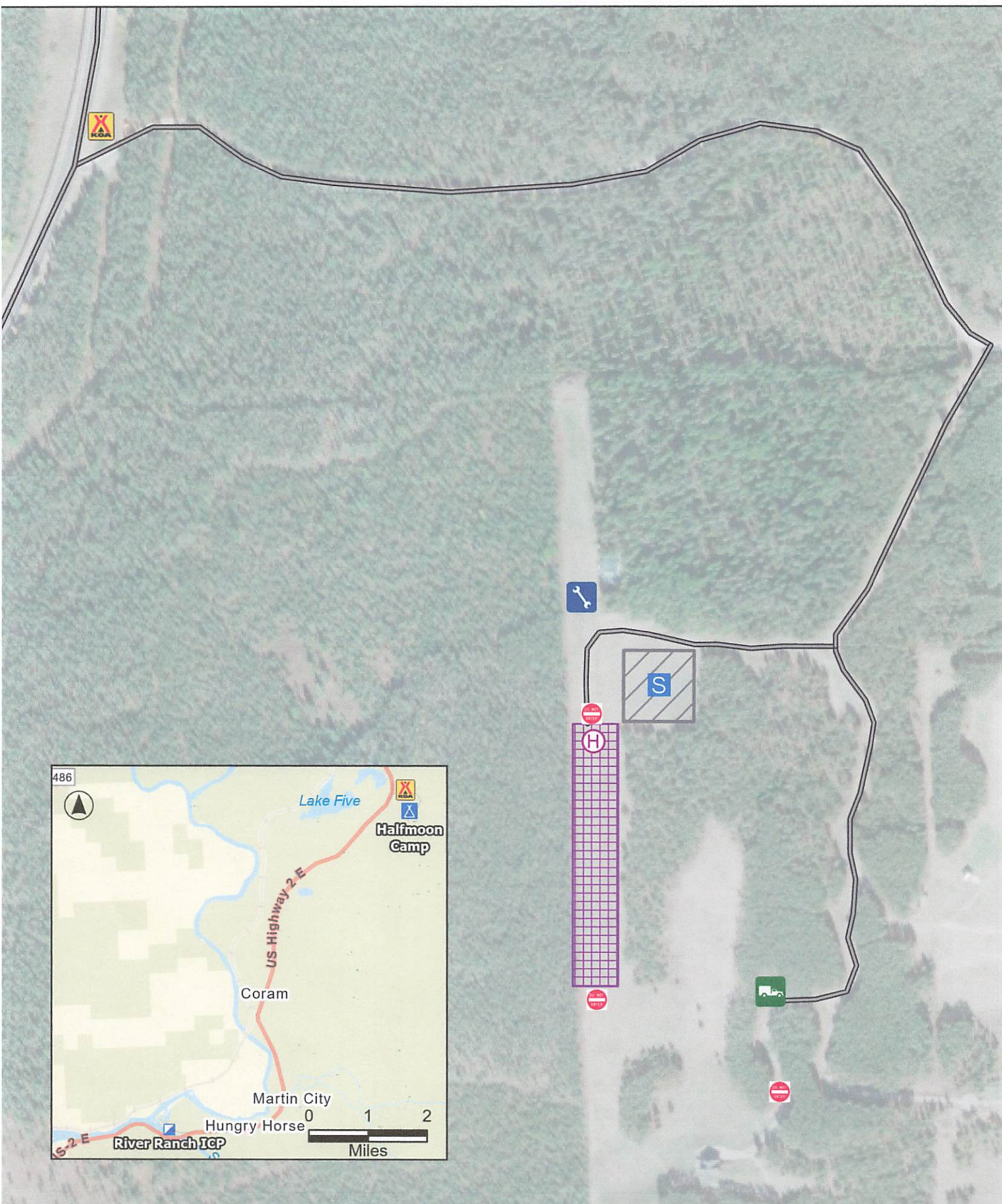
**ICP MAP**  
**Ridge Doris Point**  
 MT-FNF-000518  
 MT-FNF-000496



- |              |                   |                 |            |
|--------------|-------------------|-----------------|------------|
| DO NOT ENTER | LUNCHES/ICE/WATER | IMT WORK SPACES | PARKING    |
| CLERICAL     | SHOWER            | IMT WORK AREAS  | NO PARKING |
| FUEL         | SUPPLY            | BRIEFING AREA   | Supply     |
| KITCHEN      | SECURITY          | CAMPING AREAS   |            |





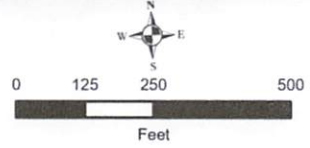


**HALFMOON CAMP**  
Ridge

MT-FNF-000518



-  GROUND SUPPORT
-  DO NOT ENTER
-  HEAVY EQUIPMENT STAGING
-  HEAVY EQUIPMENT STAGING
-  HELIBASE
-  HELIBASE
-  WEED WASH





# MEDICAL PLAN

<b>1. Incident / Project Name</b>	<b>2. Operational Period</b>
Ridge, Doris Point, & Tin Soldier	Date/Time: 8/29/2023 (0700-2000)

3. Ambulance Services			
Name	Location	Phone and Emergency Frequency	Advanced Life Support (ALS) YES NO
Three Rivers EMS	31 7th Street W Columbia Falls, MT 59912	911 406-892-4244	X

4. Air Ambulance Services		
Name	Phone	Type of Aircraft & Capability
ALERT-1	911 866-302-9767	Bell 407 Critical Care/ALS
Two Bear Air Resuce	911 406-758-5610	Bell 429 Rescue/ Hoist NVG/ BLS
350HQ	Kalispell Dispatch	H-125 Short-haul/ BLS

5. Hospitals							
Name Complete Address	Degrees Decimal Minutes	Travel Time From ICP Air Ground		Phone	Helipad Yes No		Level of Care
Logan Health Whitefish 1600 Hospital Way Whitefish, MT 59937	Lat: 48° 22.51' N	7 MINS	19 MINS	406-863-3528 Ask for ER	X		Level 4
	Long: 114° 19.56' W						
Logan Health Kalispell 350 Heritage Way Kalispell, MT 59901	Lat: 48° 22.84' N	10 MINS	33 MINS	406-752-1733 Ask for ER	X		Level 3
	Long: 114° 19.88' W						
St Patrick's Medical Center 500 W. Broadway Missoula, MT 59802	Lat: 113° 59.96' N	45 MINS	2.5 HRS	406-543-7271 Ask for ER	X		Level 2
	Long: 122° 19.39' W						
Harbor View Medical Center 325 9th Ave. Seattle, WA 98104	Lat: 47° 36.24' N	1.5 HRS	8.5 HRS	206-744-3140 Ask for ER	X		Level 1 Burn Center
	Long: 122° 19.39' W						

## Branch I

<b>Ridge</b>	EMS Responders & Capabilities:	Med Team 6: O-208: Ayala Rahm EMPF: 520-403-8100 (Lead) AMBO 10: E-114: Josh Pipolo EMPF 406-499-8399 (Lead)			
	Equipment Available on Scene:	BLS/ALS Kits; 4x4 ALS Ambulance			
	Medical Emergency Channel:	Command <span style="float: right;">A/G: TAN/MED (VMED28)</span>			
	ETA for Ambulance to Scene:	All time approximate			
	Air:	25 min (minimum)			
	Ground:	15 min (minimum) to H15, 40 min (minimum) DP11 to H15			
	Approved Heli-spot	H15	H8	H10	H8
	Lat:	48° 22.894' N	48° 21.861' N	48° 22.362' N	48° 21.861' N
Long:	114° 00.283'	113° 54.227' W	113° 54.227' W	113° 54.227' W	
<b>REPAIR GROUP 1</b>	EMS Responders & Capabilities:	Med Team 3: O-110: Robert Smith 541-285-8890 (Lead) Med Team 7: O-96: Rodney Schmidt EMPF: 406-261-9541 (Lead)			
	Equipment Available on Scene:	BLS/ALS Kits			
	Medical Emergency Channel:	Command <span style="float: right;">A/G: TAN/MED (VMED28)</span>			
	ETA for Ambulance to Scene:	All time approximate			
	Air:	Division Dependent			
	Ground:	Division Dependent			
	Approved Heli-spot	Division Dependent			
<b>REPAIR GROUP 2</b>	EMS Responders & Capabilities:	Med Team 2: E-129: Adam Osiadacz EMPF: 805-477-8568 (Lead) Med Team 4: James Fox EMPF: 253-222-8023 (Lead)			
	Equipment Available on Scene:	BLS/ALS Kits; UTV (Non-pt transport capable)			
	Medical Emergency Channel:	Command <span style="float: right;">A/G: TAN/MED (VMED28)</span>			
	ETA for Ambulance to Scene:	All time approximate			
	Air:	Division Dependent			
	Ground:	Division Dependent			
	Approved Heli-spot	Division Dependent			

<b>DORIS POINT GROUP</b>	EMS Responders & Capabilities:	Med Team 5: O-111: Sean O'Neal 563-370-7261 (Lead) AMBO 11: E-140: Aaron Henry EMPF: 903-920-7692 (Lead)		
	Equipment Available on Scene:	BLS/ALS Kits; 4x4 ALS Ambulance		
	Medical Emergency Channel:	Command A/G: TAN/MED (VMED28)		
	ETA for Ambulance to Scene:	All time approximate		
	Air:	25 min (minimum)		
	Ground:	20 min (minimum) to DP19		
	Approved Heli-spot	H 22		
	Lat:	48° 18.990' N		
Long:	113° 58.522' W			


### Branch II

<b>TIN SOLDIER GROUP</b>	EMS Responders & Capabilities:	Med Team 8: O-209: Beione Mixon EMPF: 313-977-6319 (Lead) AMBO 12: E-148: Tyler Adair EMPF: 479-393-9307 (Lead)		
	Equipment Available on Scene:	BLS/ALS Kits; 4x4 ALS Ambulance		
	Medical Emergency Channel:	Command A/G: TAN/MED (VMED28)		
	ETA for Ambulance to Scene:	All time approximate		
	Air:	30 min (minimum)		
	Ground:	1.25 hr (minimum) to DP 24		
	Approved Heli-spot	H 52	H 50	H 20
	Lat:	48° 04.720' N	47° 57.413' N	47° 55.098' N
Long:	113° 41.622' W	113° 33.496' W	113° 30.924' W	

### Camps

<b>ICP</b>	EMS Responders & Capabilities:	Will Kuamo'o, MESC, 480-799-7447 Cheyenne Lane, MEDL(T), 512-629-3476 Alan Browne, MEDL(T), 406-261-5255		
	Equipment Available on Scene:	AED/ALS/BLS Kit		
	Medical Emergency Channel:	TAC 1 A/G: TAN/MED (VMED28)		
	ETA for Ambulance to Scene:	All time approximate		
	Air:	15 Mins (minimum)		
	Ground:	8 Mins (minimum)		
	Approved Heli-spot	H1		
	Lat:	48° 23.120' N		
Long:	114° 03.740' W			

<b>SPOTTED BEAR SPIKE</b>	EMS Responders & Capabilities:	Mike Short: MEDL(T): 520-419-2401 Med Team 8: O-209: Beione Mixon EMPF: 313-977-6319 (Lead) AMBO 12: E-148: Tyler Adair EMPF: 479-393-9307 (Lead)		
	Equipment Available on Scene:	BLS/ALS Kits; 4x4 ALS Ambulance		
	Medical Emergency Channel:	TAC 1 A/G: TAN/MED (VMED28)		
	ETA for Ambulance to Scene:	All time approximate		
	Air:	30 min (minimum)		
	Ground:	1.25 hr (minimum) to DP 24		
	Approved Heli-spot	H 52	H 50	
	Lat:	48° 04.720' N	47° 57.413' N	
Long:	113° 41.622' W	113° 33.496' W		

Cheyenne Lane MEDL(T) *Cheyenne Lane* 8/28/2023 Jim Burton SOF1  8/28/23

## In Camp Medical Emergencies Procedures

### In ICP:

1. Radio over TAC1
2. Call Medical at 208-891-6143

### In Spotted Bear Spike:

1. Contact Branch II through Tac 1
2. Radio through Command with LOCATION and COMPLAINT

For any questions or concerns please call  
208-891-6143

Will Kuamo'o, MESC, 480-799-7447  
Cheyenne Lane, MEDL(T), 512-629-3476

(WF206)



**Medical Incident Report**

FOR A **NON-EMERGENCY INCIDENT**: WORK THROUGH CHAIN OF COMMAND TO REPORT AND TRANSPORT INJURED PERSONNEL AS NECESSARY.

FOR A **MEDICAL EMERGENCY**: IDENTIFY ON SCENE INCIDENT COMMANDER BY NAME AND POSITION AND ANNOUNCE **"MEDICAL EMERGENCY"** TO INITIATE RESPONSE FROM COMMUNICATIONS

**Use the following items to communicate situation to communications/dispatch.**

**1. CONTACT COMMUNICATIONS / DISPATCH** (Verify correct frequency prior to starting report)

*Ex: "Communications, Div. Alpha. Stand-by for Emergency Traffic."*

**2. INCIDENT STATUS:** Provide incident summary (including number of patients) and command structure.

*Ex: "Communications, I have a Red priority patient, unconscious, struck by a falling tree.*

*Requesting air ambulance to Forest Road 1 at (Lat./Long.)*

*"This will be the Trout Meadow Medical Incident, IC is TFLD Jones. EMT Smith is providing medical care."*

Severity of Emergency AND Transport Priority (priority 1, 2, 3)	<input type="checkbox"/> <b>RED / PRIORITY 1 Life or limb threatening injury or illness. Evacuation need is IMMEDIATE</b> <i>Ex: Unconscious, difficulty breathing, bleeding severely, 2° – 3° burns more than 4 palm sizes, heat stroke, disoriented.</i>	
	<input type="checkbox"/> <b>YELLOW / PRIORITY 2 Serious Injury or illness. Evacuation may be DELAYED if necessary.</b> <i>Ex: Significant trauma, unable to walk, 2° – 3° burns not more than 1-3 palm sizes.</i>	
	<input type="checkbox"/> <b>GREEN / PRIORITY 3 Minor Injury or illness. Non-Emergency transport</b> <i>Ex: Sprains, strains, minor heat-related illness.</i>	
Nature of Injury or Illness & Mechanism of Injury		<i>Brief Summary of Injury or Illness (Ex: Unconscious, Struck by Falling Tree)</i>
Transport Request		<i>Air Ambulance / Short Haul/Hoist Ground Ambulance / Other</i>
Patient Location		<i>Descriptive Location &amp; Lat. / Long. (WGS84)</i>
Incident Name		<i>Geographic Name + "Medical" (Ex: Trout Meadow Medical)</i>
On-Scene Incident Commander		<i>Name of on-scene IC of Incident within an Incident (Ex: TFLD Jones)</i>
Crew Patient Care		<i>Name of Care Provider (Ex: EMT Smith)</i>

**3. INITIAL PATIENT ASSESSMENT:** Complete this section for each patient as applicable (start with the most severe patient)

Patient Assessment: (IRPG PAGE 106)	Age:	Weight:	Chief Complaint:
Skin Signs: (color/moisture/temp)	Level of Consciousness:	BP:	HR:      Respirations:
Treatment:			

**4. TRANSPORT PLAN:**

Evacuation Location ( <i>drop point, intersection, helispot, Lat. / Long, hazards</i> )	Patient's ETA to Location:
---	----------------------------

**5. ADDITIONAL RESOURCES / EQUIPMENT NEEDS:**

*Paramedic / EMT - Crews - Immobilization Devices - AED - Oxygen - Trauma Bag - IV/Fluid(s) - Splints - Rope rescue - Wheeled litter - HAZMAT - Extrication*

**6. COMMUNICATIONS: Identify State Air/Ground EMS Frequencies and Hospital Contacts as applicable**

Function	Channel Name/Number	Receive (RX)	Tone/NAC *	Transmit (TX)	Tone/NAC *
COMMAND					
AIR-TO-GRND					
TACTICAL					

**7. CONTINGENCY: Considerations: If primary options fail, what actions can be implemented in conjunction with primary evacuation method? Be thinking ahead.**

**8. ADDITIONAL INFORMATION:** Updates/Changes, etc.

**REMEMBER:** Confirm ETA's of resources ordered. Act according to your level of training

**Be Alert - Keep Calm - Think Clearly - Act Decisively**

\*\*\* Follow up with MEDL upon return to ICP \*\*\*



