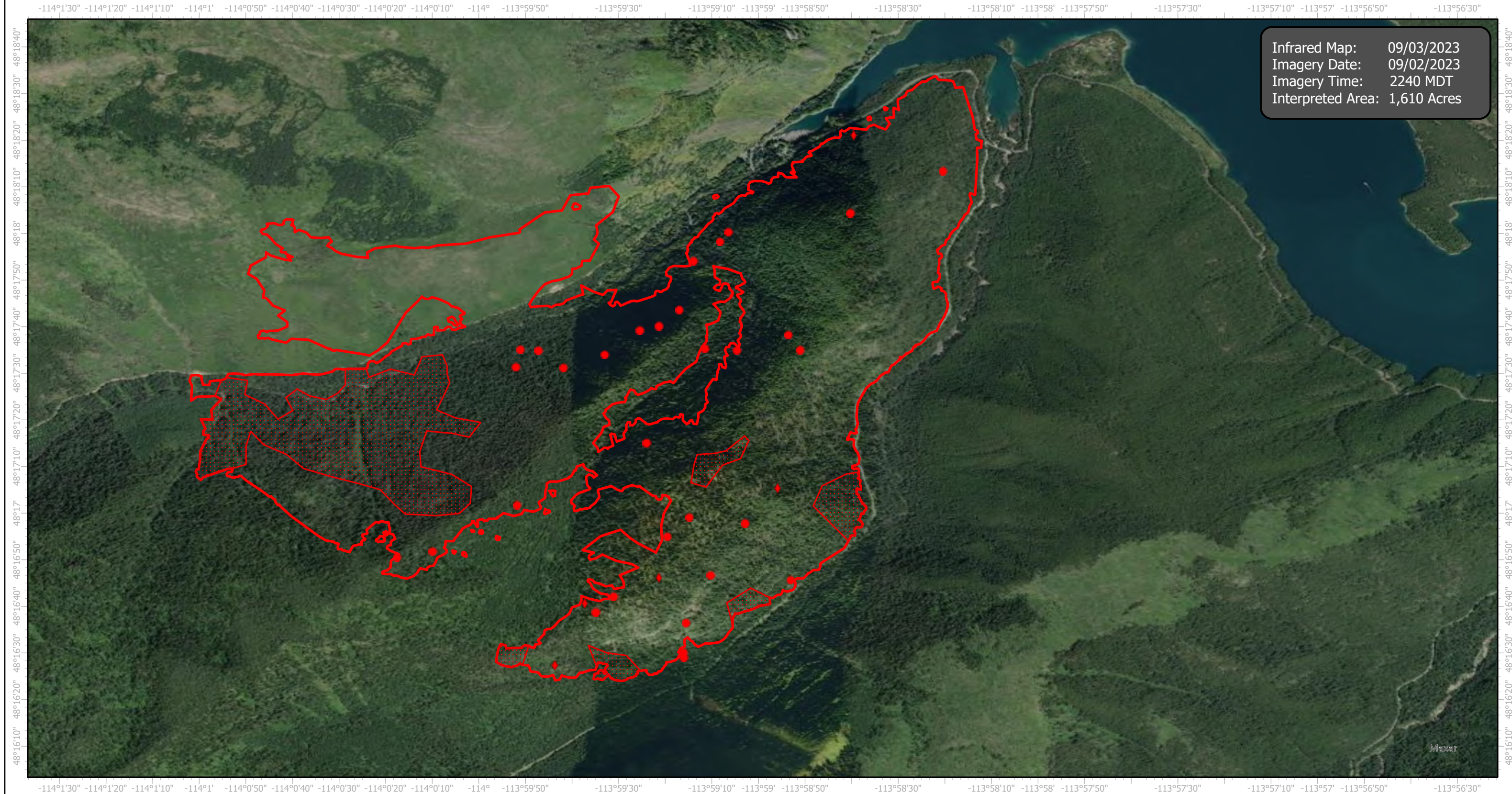


# Doris Point Infrared Map

Incident # (MT-FNF-000496)



Infrared Map: 09/03/2023  
Imagery Date: 09/02/2023  
Imagery Time: 2240 MDT  
Interpreted Area: 1,610 Acres

GCS WGS 1984  
Scale: 1:24,000

- IR Isolated Heat Source
- ◆ Possible IR Heat Source
- ▭ IR Heat Perimeter
- ▨ IR Scattered Heat

Infrared Interrupter: Daniel LeVrier  
email: [daniel.levrier@usda.gov](mailto:daniel.levrier@usda.gov)