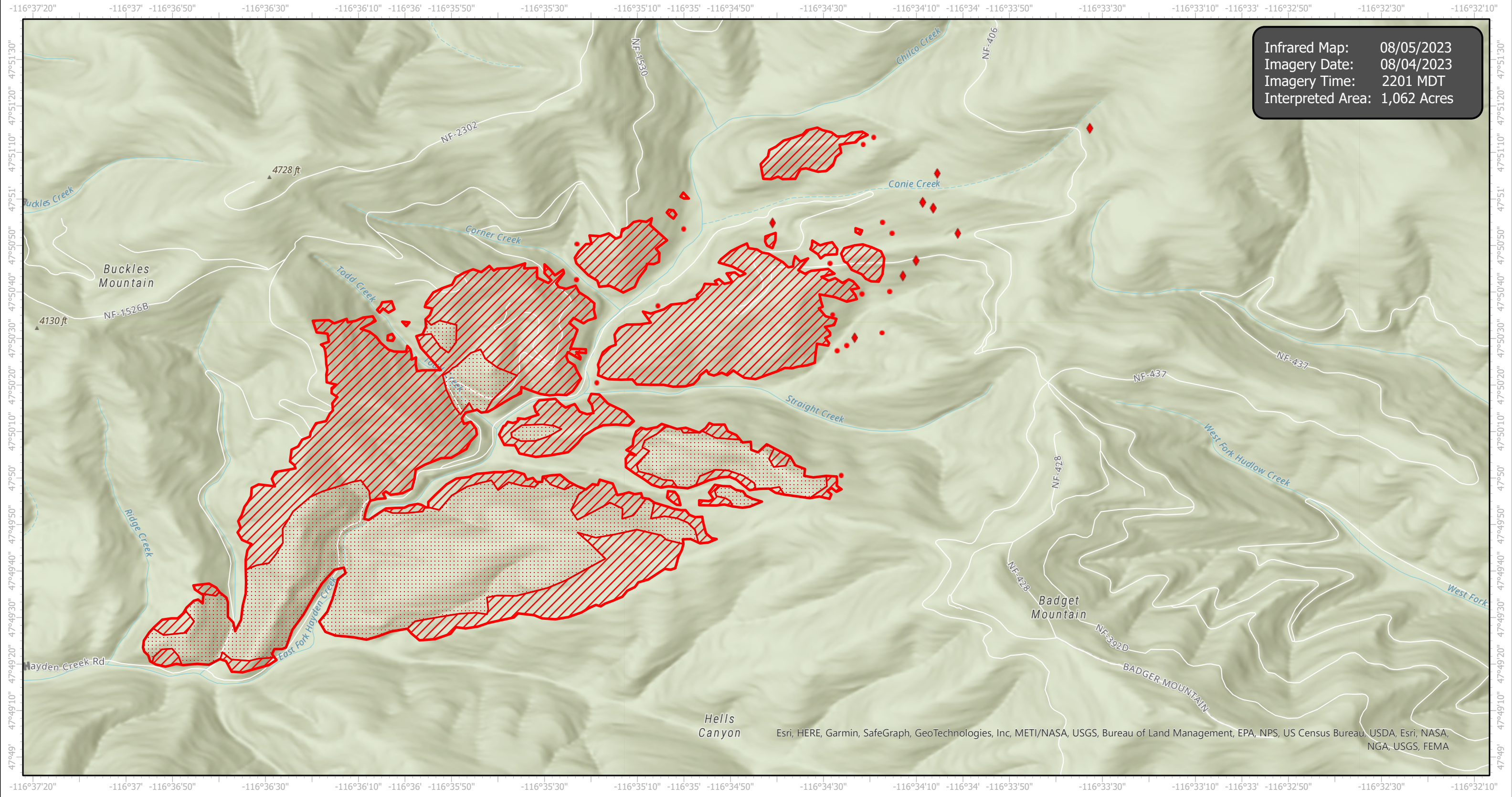


RidgeCreek Infrared Map

Incident # (ID-IPF-000447)



Esri, HERE, Garmin, SafeGraph, GeoTechnologies, Inc, METI/NASA, USGS, Bureau of Land Management, EPA, NPS, US Census Bureau, USDA, Esri, NASA, NGA, USGS, FEMA



- IR Heat Perimeter
- IR Intense Heat
- IR Scattered Heat
- IR Isolated Heat Source
- Possible IR Heat Source

Infrared Interrupter: Daniel LeVrier
email: daniel.levrier@usda.gov