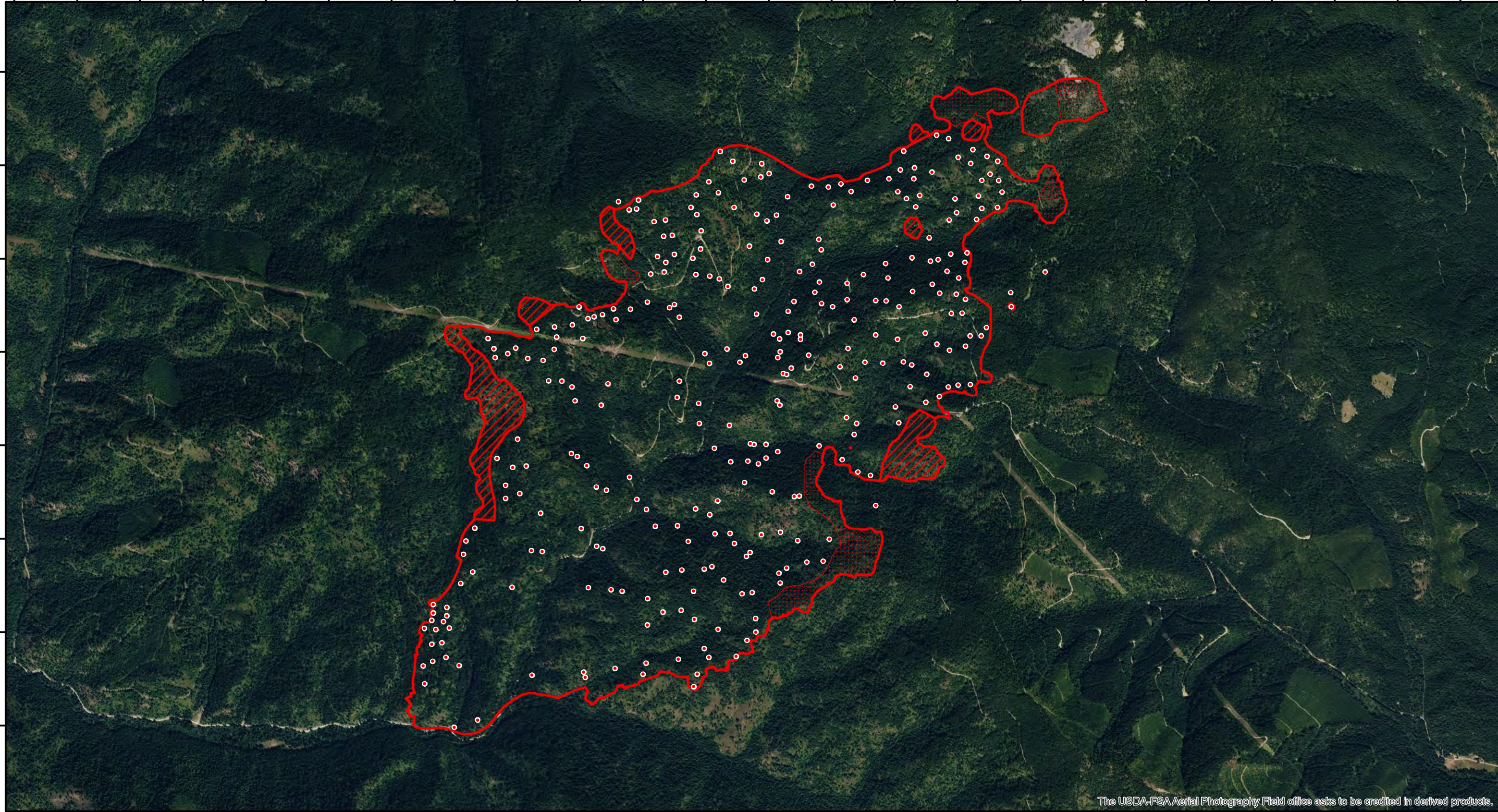


116°38'40"W 116°38'0"W 116°37'20"W 116°36'40"W 116°36'0"W 116°35'20"W 116°34'40"W 116°34'0"W 116°33'20"W 116°32'40"W 116°32'0"W 116°31'20"W

47°51'40"N
47°51'20"N
47°51'0"N
47°50'40"N
47°50'20"N
47°50'0"N
47°49'40"N
47°49'20"N

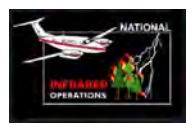
47°51'40"N
47°51'20"N
47°51'0"N
47°50'40"N
47°50'20"N
47°50'0"N
47°49'40"N
47°49'20"N



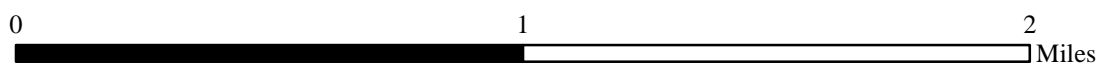
The USDA-FSA Aerial Photography Field office asks to be credited in derived products.





116°38'40"W 116°38'0"W 116°37'20"W 116°36'40"W 116°36'0"W 116°35'20"W 116°34'40"W 116°34'0"W 116°33'20"W 116°32'40"W 116°32'0"W 116°31'20"W

INFRARED MAP
RIDGE CREEK
ID-IPF-000447
 Infrared (Interpreted) Acres: 2,417
 August 11, 2023 @ 2251 PDT



IRIN: Cheron Ferland
Duluth, MN
Nad 83 Zone 11



| | |
|---|-------------------------|
|  | IR Isolated Heat Source |
|  | IR Heat Perimeter |
|  | IR Intense Heat |
|  | IR Scattered Heat |