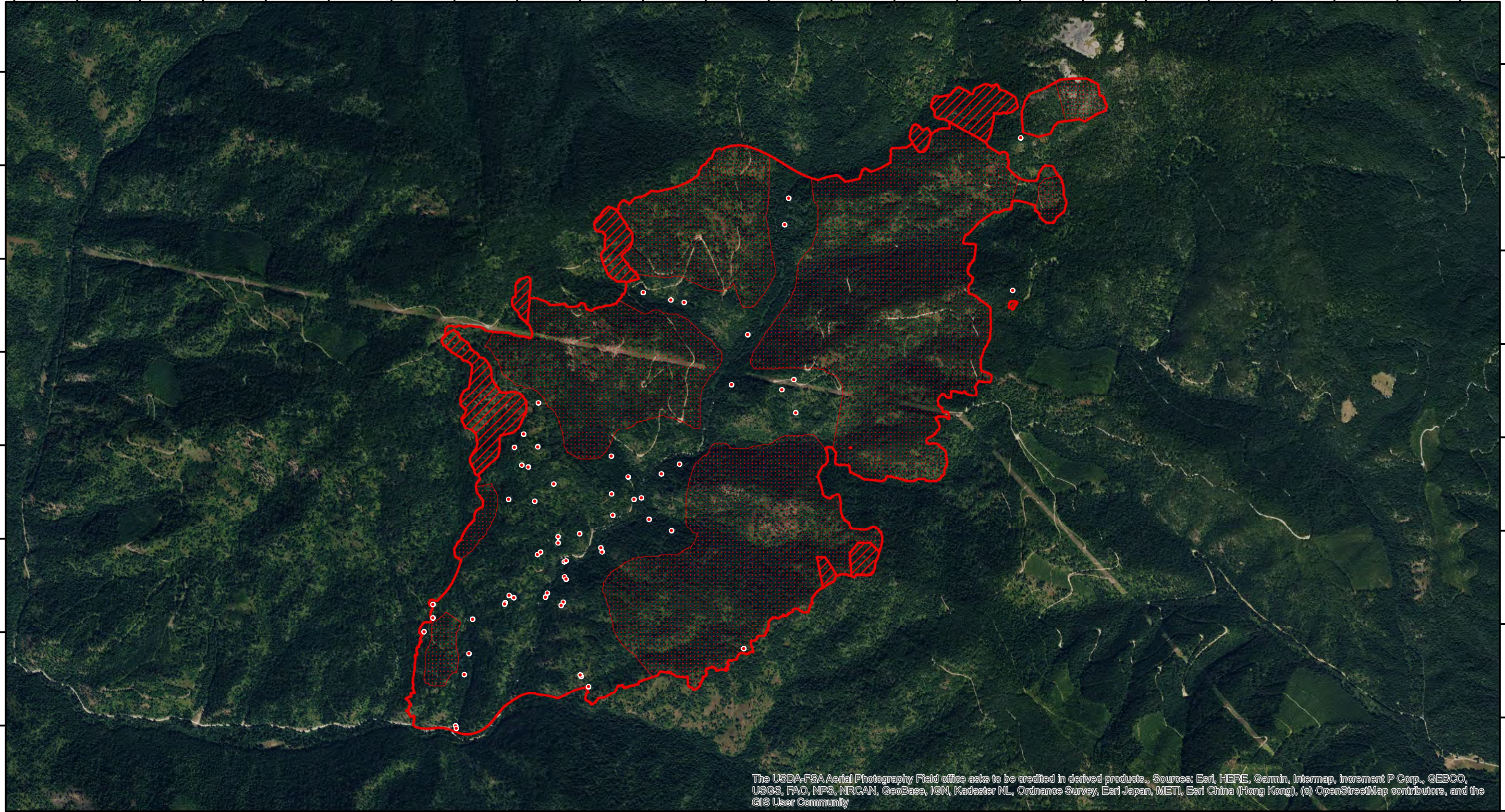


116°38'40"W 116°38'0"W 116°37'20"W 116°36'40"W 116°36'0"W 116°35'20"W 116°34'40"W 116°34'0"W 116°33'20"W 116°32'40"W 116°32'0"W 116°31'20"W

47°51'40"N
47°51'20"N
47°51'0"N
47°50'40"N
47°50'20"N
47°50'0"N
47°49'40"N
47°49'20"N

47°51'40"N
47°51'20"N
47°51'0"N
47°50'40"N
47°50'20"N
47°50'0"N
47°49'40"N
47°49'20"N

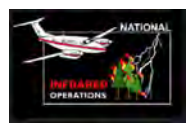


The USDA-FSA Aerial Photography Field office asks to be credited in derived products., Sources: Esri, HERE, Garmin, Intermap, increment P Corp., GEBCO, USGS, FAO, NPS, NRCAN, GeoBase, IGN, Kadaster NL, Ordnance Survey, Esri Japan, METI, Esri China (Hong Kong), (c) OpenStreetMap contributors, and the GIS User Community

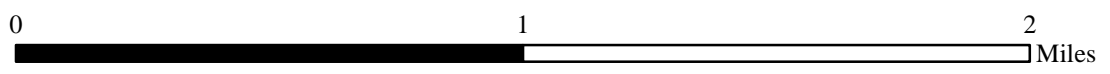
116°38'40"W 116°38'0"W 116°37'20"W 116°36'40"W 116°36'0"W 116°35'20"W 116°34'40"W 116°34'0"W 116°33'20"W 116°32'40"W 116°32'0"W 116°31'20"W





47°49'0"N

INFRARED MAP
RIDGE CREEK
ID-IPF-000447
Infrared (Interpreted) Acres: 2,448
August 12, 2023 @ 2014 PDT



IRIN: Cheron Ferland
Duluth, MN
Nad 83 Zone 11



-  IR Isolated Heat Source
-  IR Heat Perimeter
-  IR Intense Heat
-  IR Scattered Heat