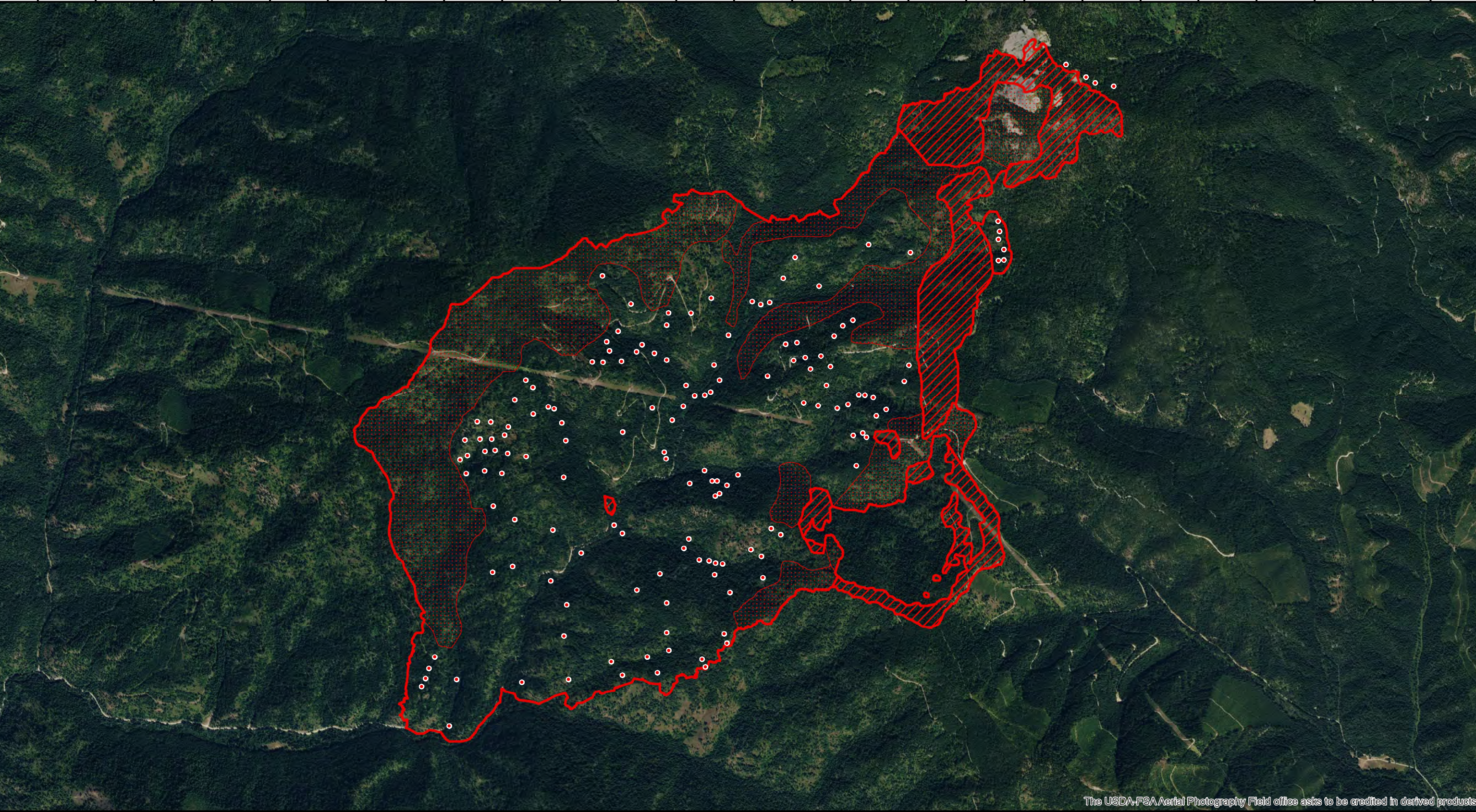


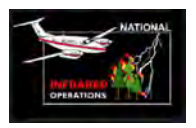
116°39'0"W 116°38'20"W 116°37'40"W 116°37'0"W 116°36'20"W 116°35'40"W 116°35'0"W 116°34'20"W 116°33'40"W 116°33'0"W 116°32'20"W 116°31'40"W 116°31'0"W



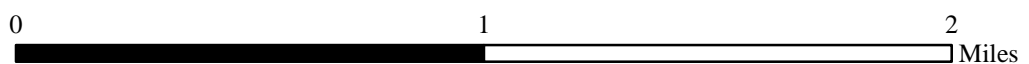
The USDA-FSA Aerial Photography Field office asks to be credited in derived products.





116°39'0"W 116°38'20"W 116°37'40"W 116°37'0"W 116°36'20"W 116°35'40"W 116°35'0"W 116°34'20"W 116°33'40"W 116°33'0"W 116°32'20"W 116°31'40"W 116°31'0"W

**INFRARED MAP**  
**RIDGE CREEK**  
**ID-IPF-000447**  
Infrared (Interpreted) Acres: 3,248  
August 16, 2023 @ 2037 PDT



*IRIN: Cheron Ferland*  
*Duluth, MN*  
*Nad 83 Zone 11*



-  IR Isolated Heat Source
-  IR Heat Perimeter
-  IR Intense Heat
-  IR Scattered Heat