

Ridge Creek

Incident Action Plan

0600-2200

Tuesday August 8, 2023

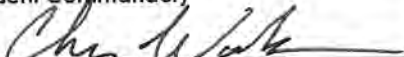


ID-IPF-000447

P1QG9D (0104)



QR Code to download the IAP and maps
<https://linktr.ee/2023ridgecreek>

INCIDENT OBJECTIVES	1. Incident Name Ridge Creek Fire	2. Date August 7, 2023	3. Time 1930
4. Operational Period: Tuesday, August 8, 2023 0600-2200			
5. General Control Objectives for the Incident <ul style="list-style-type: none"> • Provide for the protection of firefighter and public safety by implementing a course of action that achieves incident objectives while minimizing firefighter exposure, mitigating public safety issues, and is based on sound risk management principles • Protect infrastructure, private residences, private inholdings and businesses in the planning area from negative impacts by fire and mitigating smoke impacts when possible. This includes private inholdings and residences east of Hayden Lake and Hudlow Warming Hut • Minimize fire suppression impacts and fire effects of Hayden Creek and Hayden Lake and associated RHCA • Minimize fire impacts to timber values on private industrial timber lands and National Forest System lands. This includes Bottom Canyon and other planned timber sales and existing plantations • Minimize fire impacts to the Bonneville Power Administration Transmission lines north of the current fire area • Ensure active communications of fire status, planned management actions, and predicted fire behavior to Bonneville Power Administration so that the appropriate actions can be taken to manage the transmission lines • Use a deliberative risk management process that mitigates risk to firefighting resources and the public while pursuing a course of action to achieve incident objectives. Protection of human life is the highest priority on all actions. <ul style="list-style-type: none"> ○ Develop a population protection plan for private inholdings and residences east of Hayden Lake. Coordinate with Kootenai County Emergency Management. ○ Coordinate with the Kootenai County Sheriff on emergency evacuation plans as needed ○ Implement and maintain any road, trail, or area closures for public safety as needed • Build and maintain a high degree of trust with our partners, cooperators, stakeholders, and forest visitors by providing accurate, timely and well distributed information sharing • In addition to incident specific objectives and requirements, follow direction in strategic objectives and requirements found in the Ridge Creek WFDSS decision. 			
5b. Incident Commander's Intent Prioritized values at risk are: <ol style="list-style-type: none"> 1. Private property and residences 2. Hayden Creek and Hayden Lake Water Quality 3. Industrial timber lands and Bottom Canyon Timber Sales (Idaho Forest Group) and other planned timber sales 4. Bonneville Power Administration Transmission Line 5. Hudlow Warming Hut 6. Plantations 			
6. Weather Forecast & General Safety Message for Period - See Attached			
7. Attachments (mark if attached)			
<input checked="" type="checkbox"/> Organization List - ICS 203	<input checked="" type="checkbox"/> Weather Forecast	<input checked="" type="checkbox"/> Safety Message	
<input checked="" type="checkbox"/> Div. Assignment Lists - ICS 204	<input checked="" type="checkbox"/> Fire Behavior Forecast	<input checked="" type="checkbox"/> Medical Emergency Com Plan	
<input checked="" type="checkbox"/> Communications Plan - ICS 205	<input checked="" type="checkbox"/> Incident Map	<input type="checkbox"/>	
<input checked="" type="checkbox"/> Medical Plan - ICS 206	<input checked="" type="checkbox"/> Air Operations- ICS 220	<input type="checkbox"/>	
9. Prepared by (Planning Section Chief) Robbi Mecus – Deputy PSC	9. Approved by (Incident Commander) Chris Woods ICT2(t) 		

ORGANIZATION ASSIGNMENT LIST (ICS 203)

1. Incident Name:		2. Operational Period: Date From: _____ Date To: _____ Time From: _____ Time To: _____	
3. Incident Commander(s) and Command Staff:		7. Operations Section:	
IC/UCs		Chief	
		Planning Operations	
Deputy		Staging Area	
Safety Officer		Branch	
Public Info. Officer		Branch Director	
Liaison Officer		Deputy	
4. Agency/Organization Representatives:		Division/Group	
Agency/Organization	Name	Division/Group	
		Division/Group	
		Division/Group	
		Division/Group	
		Division/Group	
		Branch	
		Branch Director	
		Deputy	
5. Planning Section:		Division/Group	
Chief		Division/Group	
Deputy		Division/Group	
Resources Unit		Division/Group	
Situation Unit		Division/Group	
Documentation Unit		Branch	
Demobilization Unit		Branch Director	
Technical Specialists		Deputy	
		Division/Group	
		Division/Group	
		Division/Group	
6. Logistics Section:		Division/Group	
Chief		Division/Group	
Deputy		Air Operations Branch	
Support Branch		Air Ops Branch Dir.	
Director			
Supply Unit			
Facilities Unit		8. Finance/Administration Section:	
Ground Support Unit		Chief	
Service Branch		Deputy	
Director		Time Unit	
Communications Unit		Procurement Unit	
Medical Unit		Comp/Claims Unit	
Food Unit		Cost Unit	
9. Prepared by: Name: _____ Position/Title: _____ Signature: _____			
ICS 203	IAP Page ____	Date/Time: _____	

[EXTERNAL]Spot Forecast

National Weather Service <nws.spokane@noaa.gov>

Mon 8/7/2023 9:21 PM

FNUS76 KOTX 072120

FWSOTX

Spot Forecast for Ridge Creek Fire...ID-IPF

National Weather Service Spokane WA

220 PM PDT Mon Aug 7 2023

Forecast is based on forecast start time of 1800 PDT on August 07.
If conditions become unrepresentative...contact the National Weather Service.

.DISCUSSION...

..FLASH FLOOD WATCH IN EFFECT THIS AFTERNOON AND EVENING...

.DISCUSSION...

Update on thunderstorm activity: As of 2 PM PDT a cluster of slow moving thunderstorms producing heavy downpours and occasional to frequent lightning is positioned over Eastern Washington and North Idaho. Thunderstorms in this cluster are expected to impact the Ridge Creek Fire today. Impacts would include gusty and erratic wind outflow, heavy downpours up to an inch of rainfall, and frequent lightning. As such there is some potential for localized flash flooding and rock slides. The activity should decrease substantially and/or end after 6 pm PDT this evening. Weak high pressure will be put in place after this disturbance exits the area allowing for a drier and warmer Tuesday but this may be short lived as another weak cold front moves through Wednesday which will bring cooler temps and potential for some light rain showers.

.TONIGHT...

Sky/weather.....Mostly cloudy. 70% Chance of showers and thunderstorms in the evening. Then partly cloudy with haze through the night.

CWR.....20 percent.

LAL.....3 this evening, then 1.

Min temperature.....Around 58.

Max humidity.....83 percent.

Wind (20 ft).....South winds 5 to 6 mph. Gusty and erratic winds expected near thunderstorms in the evening.

Mixing height.....Lowering to near surface overnight.
Transport winds.....Southwest around 8 mph.
Haines Index.....2 Very Low.

.TUESDAY...

Sky/weather.....Partly sunny. 20 percent chance of rain showers.
CWR.....5 percent.
LAL.....1.
Max temperature.....Around 77.
Min humidity.....41 percent.
Wind (20 ft).....Southwest winds 5 to 8 mph. Gusts to 17 mph in
the afternoon.
Mixing height.....6000 ft AGL by afternoon.
Transport winds.....Southwest 9 to 13 mph.
Haines Index.....2 Very Low.

.TUESDAY NIGHT...

Sky/weather.....Partly cloudy.
CWR.....0 percent.
LAL.....1.
Min temperature.....Around 60.
Max humidity.....65 percent.
Wind (20 ft).....South winds 5 to 7 mph shifting to the
southeast around 5 mph overnight.
Mixing height.....Lowering to near surface overnight.
Transport winds.....South 7 to 9 mph.
Haines Index.....3 Very Low.

.WEDNESDAY...

Sky/weather.....Mostly cloudy. 30 percent chance of showers.
CWR.....10 percent.
LAL.....1.
Max temperature.....Around 73.
Min humidity.....46 percent.
Wind (20 ft).....South winds 5 to 9 mph shifting to the
southwest 11 to 12 mph with gusts to around 18
mph in the afternoon.
Mixing height.....7000 ft AGL in the afternoon.
Transport winds.....Southwest 14 to 18 mph.
Haines Index.....3 Very Low.

\$\$

Forecaster...RP
Requested by...Ben Garrett SITL
Type of request...WILDFIRE
.TAG 2318252.3/OTX
.DELDT 08/07/23
.FormatterVersion 2.0.0
.EMAIL 2023.ridgecreek.situation@firenet.gov

FIRE BEHAVIOR FORECAST

FORECAST NUMBER: 1	TYPE OF FIRE Wildfire
FIRE NAME: Ridge Creek	OPERATIONAL PERIOD Day Shift 08/08/2023
DATE ISSUED 08/7/2023	TIME ISSUED 1830
UNIT ID-IPF-000447	SIGNED Benjamin Garrett SITL

INPUTS

WEATHER SUMMARY:

DISCUSSION... Weak high pressure will be put in place after this disturbance exits overnight Monday Night allowing for a drier and warmer Tuesday but this may be short lived as another weak cold front moves through Wednesday which will bring cooler temps and potential for some light rain showers.

See spot weather forecast for specifics

Temp: Maximum around 73, minimum around 57

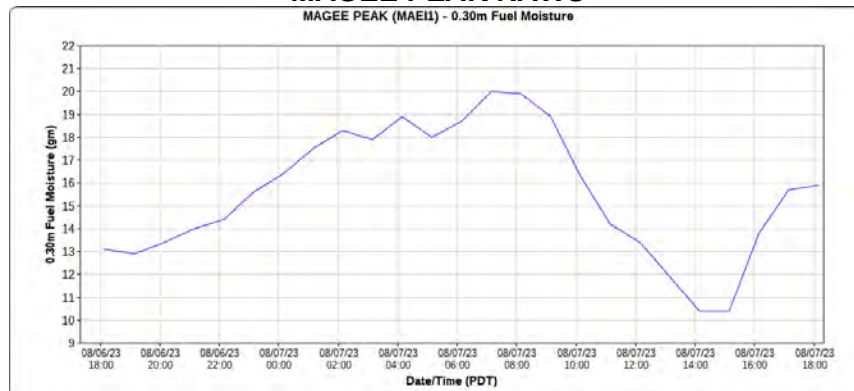
RH: Minimum around 44%, max around 81%

Winds: Southwest 6 to 12 mph gusting to 16 mph

Fuels & Fuel Moisture:

MAGEE PEAK RAWS

MAGEE PEAK (MAE11) - 0.30m Fuel Moisture



FIRE BEHAVIOR

GENERAL

Fire behavior is expected to be minimal in the morning and may start to burn more intensely as the RH decreases and the solar energy dries the fuels. Large fuels and duff will continue to smolder over the next few days.

SPECIFIC

SPECIFIC FIRE BEHAVIOR:

Delta Fire: Scattered rain showers overnight with high RH values have raised fine fuel moistures values where they are nearly unavailable for consumption but will react rapidly as conditions dry out. Minimal fire behavior is expected today.

SAFETY

Watch your footing with the wet conditions.

DIVISION ASSIGNMENT LIST			1. Branch		2. Division A	
3. Incident Name RIDGE CREEK			4. Operational Period Date: 08/08/2023 Time: 0600 - 2200			
5. Operations Personnel						
Field Operations Section Chief		Cory Henry/Brian Wolvert (T)		Branch Director		
Planning Operations Section Chief		Keith Murphy/Darren Bridges (T)		Division Supervisor		Todd Wood/Josh Strohmeier (T)
6. Resources Assigned this Period						
RO#	Strike Team/Task Force/ Resource Designator	Leader	# People	LWD	Drop Off PT./Time	Pick Up PT./Time
C-5	CRW1 - KLAMATH IHC	Owensbey	19		ICP/0600	ICP/2200
E-28	ENG4 IPF E432		3		ICP/0600	ICP/2200
E-6	ENG 6 NDNS E5274	Mountain	4	8/20	ICP/0600	ICP/2200
E-29	ENG6 IPF E612	CAMPBELL	6		ICP/0600	ICP/2200
	ENG6 IPF E611	MYHRE	4		ICP/0600	ICP/2200
	ENG6 Ocala	O,BRIEN	5	8/9	ICP/0600	ICP/2200
E-3	WTS2 St. Florian		1		ICP/0600	ICP/2200
E-4	WTS2 Martin	MARTIN	1		ICP/0600	ICP/2200
E-5	DZR2 Table Rock Forestry		6		ICP/0600	ICP/2200
E-8	EXC2 Fousts Inc				ICP/0600	ICP/2200
O-6.36	SOFR	Banaszak	1		ICP/0600	ICP/2200
O-20	EMTF Steve Wolfstitch	Wolfstitch	1		ICP/0600	ICP/2200
7. Control Operations: TASK: Continue preparing and securing control line on South end of fire. PURPOSE: Secure an anchor point to build control line off of. END STATE: Solid anchor point that is easily defended. Span of control is being mitigated with engine overhead						
8. Special Instructions: Utilize field maps for drop points, safety zones, and potential helispots. Ensure that comms are functional throughout the entire division. Utilize available engine staff for medical, in addition to assigned medical resources. Review 8 line medical and IW1 procedure. Local engines are also available for IA. Make sure escape routes and safety zones are identified and known.						
9. Division/Group Communication Summary						
Communications Summary						
Channel	Function	RX Frequency	RX Tone		TX Frequency	TX Tone
1 TAC 1	TAC	168.0500 N	110.9		168.0500 N	110.9
6 BLM Primary	CMD 1	164.5250 N	NONE		163.0250 N	100.0
7 FS-Secondary	CMD 2	169.9250 N	107.2		165.5625 N	131.8
12 Air to Ground Primary	A/G	167.1250 N	NONE		167.1250 N	NONE
13 AIR TO GROUND SECONDARY	A/G	166.6125 N	NONE		166.6125 N	NONE
16 Air Guard	AIRGUARD	168.6250 N	NONE		168.6250 N	110.9
Prepared by (Resource Unit Ldr(t)) <i>Matt Tonello</i>					Date 08/07/2023	Time 1900

DIVISION ASSIGNMENT LIST				1. Branch		2. Division K-Unstaffed		
3. Incident Name RIDGE CREEK				4. Operational Period Date: 08/08/2023 Time: 0600 - 2200				
5. Operations Personnel								
Field Operations Section Chief		Cory Henry/Brian Wolvert (T)		Branch Director				
Planning Operations Section Chief		Keith Murphy/Darren Bridges (T)		Division Supervisor				
6. Resources Assigned this Period								
RO#	Strike Team/Task Force/ Resource Designator			Leader	# People	LWD	Drop Off PT./Time	Pick Up PT./Time
7. Control Operations:								
8. Special Instructions:								
9. Division/Group Communication Summary								
Communications Summary								
Channel	Function	RX Frequency		RX Tone		TX Frequency	TX Tone	
Prepared by (Resource Unit Ldr(t)) <i>Matt Tonello</i>						Date 08/07/2023	Time 1930	

DIVISION ASSIGNMENT LIST			1. Branch	2. Division Z (Page 1 / 2)		
3. Incident Name RIDGE CREEK			4. Operational Period Date: 08/08/2023 Time: 0600 - 2200			
5. Operations Personnel						
Field Operations Section Chief		Cory Henry/Brian Wolvert (T)		Branch Director		
Planning Operations Section Chief		Keith Murphy/Darren Bridges (T)		Division Supervisor		Chris White
6. Resources Assigned this Period						
RO#	Strike Team/Task Force/ Resource Designator	Leader	# People	LWD	Drop Off PT./Time	Pick Up PT./Time
O-2	HEQB	Hijos	1	8/17	ICP/0600	ICP/2200
O-12	HEQB	Lechter	1	8/20	ICP/0600	ICP/2200
	HEQB (t)	Schumacker	1		ICP/0600	ICP/2200
O-13	FMOD Newman	Harris	2	8/19	ICP/0600	ICP/2200
E-11	ENG6 - NDND5 E5275				ICP/0600	ICP/2200
E-9	WTT2 Sagle	Stuckey	2	8/19	ICP/0600	ICP/2200
E-1	DOZ2 Foust		1		ICP/0600	ICP/2200
E-5	DOZ2 Table Rock		1		ICP/0600	ICP/2200
E-2	EXC2 Foust 35653		1		ICP/0600	ICP/2200
E-7	GRD1 Foust L00652		1		ICP/0600	ICP/2200
7. Control Operations: TASK: Continue preparing line on FSR 625 and on indirect line connecting FSR 625 and FSR 406 PURPOSE: Keep fire north of 206 Rd to protect private residences and industrial land to the SW END STATE: Stop southerly progression of fire beyond 206 Rd						
8. Special Instructions: Utilize field maps for drop points, safety zones, and potential helispots. Ensure that comms are functional throughout the entire division. Review 8 line medical and IWI procedure.						
9. Division/Group Communication Summary						
Communications Summary						
Channel	Function	RX Frequency	RX Tone		TX Frequency	TX Tone
3 Tac 3	TAC	168.6000 N	110.9		168.6000 N	110.9
6 BLM Primary	CMD 1	164.5250 N	NONE		163.0250 N	100.0
7 FS-Secondary	CMD 2	169.9250 N	107.2		165.5625 N	131.8
12 Air to Ground Primary	A/G	167.1250 N	NONE		167.1250 N	NONE
13 AIR TO GROUND SECONDARY	A/G	166.6125 N	NONE		166.6125 N	NONE
16 Air Guard	AIRGUARD	168.6250 N	NONE		168.6250 N	110.9
Prepared by (Resource Unit Ldr(t)) <i>Barry Reid</i>				Date	Time	
				08/07/2023	1954	

DIVISION ASSIGNMENT LIST			1. Branch		2. Division Z (Page 2 / 2)	
3. Incident Name RIDGE CREEK			4. Operational Period Date: 08/08/2023 Time: 0600 - 2200			
5. Operations Personnel						
Field Operations Section Chief		Cory Henry/Brian Wolvert (T)		Branch Director		
Planning Operations Section Chief		Keith Murphy/Darren Bridges (T)		Division Supervisor		Chris White
6. Resources Assigned this Period						
RO#	Strike Team/Task Force/ Resource Designator	Leader	# People	LWD	Drop Off PT./Time	Pick Up PT./Time
E-25	HETF AKRE LOGGING, LLC AKRE 1	Akre	7		ICP/0600	ICP/2200
E-27	HETF Bonnali	Bonnali	8		ICP/0600	ICP/2200
E-7	GRD1 Foust L00652		1		ICP/0600	ICP/2200
E-33	FEL1 - Equipment Technologies LLC-A2128	Mayo	2		ICP/0600	ICP/2200
E-32	EXC2 – Altered Aspects, LLC - A85027	Hess	2		ICP/0600	ICP/2200
O-66	TFLD	Schelin	1		ICP/0600	ICP/2200
O-37	O-37 TFLD(t) Paul Cobb	Cobb	1		ICP/0600	ICP/2200
O-19	EMTF Wilderness Medics				ICP/0600	ICP/2200
O-1.2	SOFR	Wurzauf	1		ICP/0600	ICP/2200
7. Control Operations: TASK: Continue preparing line on FSR 625 and on indirect line connecting FSR 625 and FSR 406 PURPOSE: - Keep fire north of 206 Rd to protect private residences and industrial land to the SW END STATE: Stop southerly progression of fire beyond 206 Rd						
8. Special Instructions: Utilize field maps for drop points, safety zones, and potential helispots. Ensure that comms are functional throughout the entire division. Review 8 line medical and IWI procedure.						
9. Division/Group Communication Summary						
Communications Summary						
Channel	Function	RX Frequency	RX Tone		TX Frequency	TX Tone
3 Tac 3	TAC	168.6000 N	110.9		168.6000 N	110.9
6 BLM Primary	CMD 1	164.5250 N	NONE		163.0250 N	100.0
7 FS-Secondary	CMD 2	169.9250 N	107.2		165.5625 N	131.8
12 Air to Ground Primary	A/G	167.1250 N	NONE		167.1250 N	NONE
13 AIR TO GROUND SECONDARY	A/G	166.6125 N	NONE		166.6125 N	NONE
16 Air Guard	AIRGUARD	168.6250 N	NONE		168.6250 N	110.9
Prepared by (Resource Unit Ldr(t)) <i>Barry Reid</i>					Date 08/07/2023	Time 1950

AIR OPERATIONS SUMMARY 220	Prepared By: John Fish	Prepared: 08/07/2023	Prepared Time: 1600 hrs.			
INCIDENT NAME: Ridge Creek Fire	OPERATIONAL PERIOD 8/8/23	START TIME 0900	END TIME 2000	SUNRISE 0533	SUNSET 2011	

REMARKS - All aircraft orders thru Air Attack if on scene, otherwise thru AOBD (cell phone) - Large Electric Transmission Line through center of fire area	MEDICAL RESPONSE AIRCRAFT * Follow Medical Plan ICS-206 *	TFR Ridge Creek 3/8181 8,000 feet MSL. 0700 – 2100 Hours
---	---	--

PERSONNEL	NAME	PHONE #	FREQUENCIES	AM	FM	FIXED-WING Avail/ Type/ Make-Model/ N#/ Base
AOBD	John Fish	850-843-0977	A/G PRI		167.1250	ATGS Platforms: N76WA Call Sign – AA 104
ASGS			A/G SEC		166.6125	F/W Bases: Coeur d'Alene Airport (COE)
ATGS ATGS(T)	Matt Counts Sam Bullington	406-270-7437 406-547-4416				R/W Bases: Coeur d'Alene Airport (COE) Sand Point
						Air Tankers LATs – T105 & T132 SEATs – FB-205, FB-206, FB-217, FB-219

HELICOPTERS

FAA N#	TY	MAKE/ MODEL	BASE	START	AVAIL	REMARKS	FAA N#	TY	MAKE/ MODEL	BASE	START	AVAIL	REMARKS
N258PJ	1	CH-47D	COE	0800	0900	Bucket							
N214B	1	B214	Sand Point	0800	0900	Bucket							
N214KA	2	B212	COE	0800	0900	Bucket							
N102RF	3	AS350B2	COE	0800	0900	Bucket/Recon							

INCIDENT RADIO COMMUNICATIONS PLAN (ICS 205)

Controlled Unclassified Information//Basic

1. Incident Name:	2. Date/Time Prepared:	3. Operational Period: DAY SHIFT	
Ridge Creek Fire	Date: 08/07/23 Time: 1100	Date/Time From: 08/08/23 0600	Date/Time To: 08/08/23 2200

4. Basic Radio Channel Use:										
Zone Group	Ch #	Function	Channel Name	Assignment	RX Freq	RX Tone/NAC	TX Freq	TX Tone/NAC	Mode (A,D, or M)	Remarks
1	1	TACTICAL	TAC 1	DIV A	168.0500 N	110.9	168.0500 N	110.9	A	
1	2	TACTICAL	TAC 2	DIV K	168.2000 N	110.9	168.2000 N	110.9	A	Not Staffed
1	3	TACTICAL	TAC 3	DIV Z	168.6000 N	110.9	168.6000 N	110.9	A	
1	4	TACTICAL	TAC 4	Structure Group	166.7250 N	110.9	166.7250 N	110.9	A	Not Staffed
1	6	COMMAND	CMD 1	ALL DIVS	164.5250 N	NONE	163.0250 N	100.0	A	BLM MICA RPTR PRIMARY
1	7	COMMAND	CMD 2	ALL DIVS	169.9250 N	107.2	165.5625 N	131.8	A	FS MONUMENT SECONDARY
1	12	TACTICAL	AIR TO GROUND PRIMARY	All Divs	167.1250 N	NONE	167.1250 N	NONE	A	A/G PRIMARY
1	13	TACTICAL	AIR TO GROUND SECONDARY	All Divs	166.6125 N	NONE	166.6125 N	NONE	A	A/G SECONDARY
1	14	EMS	EMS	EMS 2	155.2800 N	NONE	155.2800 N	156.7	A	EMS 2
1	16	AIR GUARD	AIRGUARD	ALL DIVS	168.6250 N	NONE	168.6250 N	110.9	A	EMERGENCY CALL TO AIRCRAFT

5. Special Instructions:										

6. Prepared By	Communications Unit Leader	Name: : ARNIE IRVINE	Signature: /s/ Arnie Irvine
		Date/Time 8/7/23 1800	

MEDICAL PLAN (ICS 206)

1. Incident Name: Ridge Creek Fire		2. Operational Period: Date From: 08/8/23 Time From: 0600		Date To: 8/9/23 Time To: 0600			
3. Medical Aid Stations:							
Name	Location	Contact Number(s)/Frequency	Paramedics on Site?				
Med Unit Tent	ICP	(330)-633-0547 Mike	<input type="checkbox"/> Yes <input checked="" type="checkbox"/> No				
		(715)-415-2400 Bob	<input type="checkbox"/> Yes <input checked="" type="checkbox"/> No				
			<input type="checkbox"/> Yes <input type="checkbox"/> No				
			<input type="checkbox"/> Yes <input type="checkbox"/> No				
			<input type="checkbox"/> Yes <input type="checkbox"/> No				
4. Transportation (indicate air or ground):							
Ambulance Service	Location	Contact Number(s)/Frequency	Level of Service				
Kootenti County EMS	4381 W. Seltice Way , CDA ID	208-930-4224	<input checked="" type="checkbox"/> ALS <input type="checkbox"/> BLS				
Life Flight	Hayden or Sandpoint ID	20-772-3283	<input checked="" type="checkbox"/> ALS <input type="checkbox"/> BLS				
Agency Helo	USFS Coeur d Alene Dispatch	208-772-3283	<input type="checkbox"/> ALS <input type="checkbox"/> BLS				
Short Haul or Lift	Through Coeur d Alene Dispatch	208-772-3283	<input type="checkbox"/> ALS <input type="checkbox"/> BLS				
5. Hospitals:							
Hospital Name	Address, Latitude & Longitude if Helipad	Contact Number(s)/ Frequency	Travel Time		Trauma Center	Burn Center	Helipad
			Air	Ground			
Kooteni General Coeur d'Alene ID	LAT 47 45.658 N LONG 116 47 41.684 W	208-625-4000	15 min	30 min	<input checked="" type="checkbox"/> Yes Level: 2	<input type="checkbox"/> Yes <input checked="" type="checkbox"/> No	<input checked="" type="checkbox"/> Yes <input type="checkbox"/> No
Bonner General sandpoint ,ID	LAT 48 16.650 LONG 116 32.920	208-263-1441	15 min	60 min	<input checked="" type="checkbox"/> Yes Level: 4	<input type="checkbox"/> Yes <input checked="" type="checkbox"/> No	<input checked="" type="checkbox"/> Yes <input type="checkbox"/> No
Sacred Heart Medical	LAT 47 38.500 LONG 117 24.800	509-474-3131	25 min	120 min	<input checked="" type="checkbox"/> Yes Level: 2	<input checked="" type="checkbox"/> Yes <input type="checkbox"/> No	<input checked="" type="checkbox"/> Yes <input type="checkbox"/> No
Harbour View Medical Center	LAT 47 36.238 LONG 122 19.461	206-744-3074 206-744-5735 BC	120 min	300 min	<input checked="" type="checkbox"/> Yes Level: 1	<input checked="" type="checkbox"/> Yes <input type="checkbox"/> No	<input checked="" type="checkbox"/> Yes <input type="checkbox"/> No
Northwest Urgent Care	7173 E Super 1 Loop Suite A Athol, ID 83801	208-561-9970		10 min	<input type="checkbox"/> Yes Level: _____	<input type="checkbox"/> Yes <input checked="" type="checkbox"/> No	<input type="checkbox"/> Yes <input checked="" type="checkbox"/> No
6. Special Medical Emergency Procedures:							
When calling Coeur d Alene Dispatch after hours you may get a prompt. Follow the instructions. Dispatch is staffed 24hrs.							
Use the medical 8 line when calling in emergencies with a patient.							
<input checked="" type="checkbox"/> Check box if aviation assets are utilized for rescue. If assets are used, coordinate with Air Operations							
7. Prepared by (Medical Unit Leader): Name: Mike Passarelli MEDL				Signature: <i>Mike Passarelli</i>			
8. Approved by (Safety Officer): Name: Terry Trapp				Signature: <i>Terry Trapp</i>			
ICS 206	IAP Page _____	Date/Time: 8/7/2023 1700hrs					

MEDICAL PLAN (ICS 206 WF)

Controlled Unclassified Information//Basic

1. Incident/Project Name		2. Operational Period						
Ridge Creek Fire		Date/Time 8/8/2023						
3. Ambulance Services								
Name	Complete Address	Phone & EMS Frequency	Advanced Life Support (ALS)					
			Yes	No				
Kootenti EMS Group	4381 W.Seltice Way, CDA ID.	911, 208-93-4224	<input checked="" type="checkbox"/>	<input type="checkbox"/>				
			<input type="checkbox"/>	<input type="checkbox"/>				
4. Air Ambulance Services								
Name	Phone	Type of Aircraft & Capability						
Life flight	911	Medical Transport Helicopter						
5. Hospitals								
Name Complete Address	GPS Datum – WGS 84 Coordinate Standard Degrees Decimal Minutes DD° MM.MMM' N - Lat DD° MM.MMM' W - Long		Travel Time Air Gnd		Phone	Helipad Yes No	Level of Care Facility	
	Lat:	47 45.658 N	30min	15 min	208-625-4000	<input checked="" type="checkbox"/>		<input type="checkbox"/>
Long:	116 47 41.684W							
VHF:								
Bonner General	Lat: 48 16.650 Long: 116 32.920 VHF:	15 min	60 min	208-263-1441	<input checked="" type="checkbox"/>	<input type="checkbox"/>	Trauma Level 4	
Sacred Heart	Lat: 47 38.500 Long: 117 24.800 VHF:	25min	120min	509-474-3131	<input checked="" type="checkbox"/>	<input type="checkbox"/>	Traume 2 & Burn Cen.	
Harber View	Lat: 47 36.238 Long: 122 19.461 VHF:	120min	300min	206-744-3074	<input checked="" type="checkbox"/>	<input type="checkbox"/>	Trauma 1 & Burn Cen.	
6. Division Branch Group								
A	Area Location Capability							
	EMS Responders & Capability:			EMT Steve Wolfstich (520)508-9807				
	Equipment Available on Scene:			BLS				
	Medical Emergency Channel:							
	ETA for Ambulance to Scene:							
	Air:							
	Ground:			10min to alpha/Zulu break				
	Approved Helispot:							
Lat:								
Long:								
K	EMS Responders & Capability:			Unstaffed				
	Equipment Available on Scene:							
	Medical Emergency Channel:							
	ETA for Ambulance to Scene:							
	Air:							
	Ground:							
	Approved Helispot:							
	Lat:							
Long:								

MEDICAL PLAN (ICS 206 WF)

Controlled Unclassified Information//Basic

7. Name & Location	Remote Camp Location(s)		
Z	Point of Contact:	Lisa Axel (612)532-5181 EMT, Ambulance Frank Rinella 208-715-5038	
	EMS Responders & Capability:	EMT & ALS Ambulance	
	Equipment Available on Scene:	ALS	
	Medical Emergency Channel:		
	ETA for Ambulance to Scene:		
	Air:		
	Ground:	10min to alpha/Zulu break	
	Approved Helispot:		
	Lat:	Lat N47 49.300 Long -116 39.650	
	Long:		
	Point of Contact:		
	EMS Responders & Capability:		
	Equipment Available on Scene:		
	Medical Emergency Channel:		
	ETA for Ambulance to Scene:		
	Air:		
	Ground:		
	Approved Helispot:		
	Lat:		
	Long:		
8. Prepared By (Medical Unit Leader)	9. Date/Time	10. Reviewed By (Safety Officer)	11. Date/Time
Mike Passarelli	8/7/2023	Terry Trapp	8/7/2023

Safety Message

Incident:
Ridge Creek

Date:
8/08/2023

Shift:
Day

Steep Terrain/Rolling Debris/Heavy Dead & Down Fuel Loading

Fundamental safety principles for working in steep terrain with rolling debris/heavy & down fuel loading have been established based on repeated lessons learned following serious accidents. To protect operational personnel from exposure to potential traumatic injury or death when working in this environment, the following safety procedures should be applied to all activities. Fireline supervisors should continue to monitor all operations to ensure the following safe job procedures are consistently applied:

- **Maintain 8'-10' spacing when working & walking.**
- **Don't work above any personnel.**
- **Be on the lookout for rolling rocks, debris, or burning material.**
- **Evaluate necessity to send personnel in areas with limited access.**
- **Post lookouts.**
- **Watch footing**
- **Time Escape Routes to Safety Zone**

EA Silver Team Safety Group: Terry Trapp (SOF2), Lee Osterland (SOF2), Kent Glazer (SOF2T), Tim Banaszak SOFR



Finance Message

Finance Email: 2023.ridgecreek.finance@firenet.gov

SUBJECT: *Include Key Word* **TIME** for Overhead, Crews & Cooperators
SUBJECT: *Include Key Word* **EQUIPMENT** for Contract

FINANCE CHECK IN:

2023.ridgecreek.finance@firenet.gov

PLEASE ENSURE THE BELOW DOCUMENTS ARE EMAILED

Overhead, Crews & Cooperator Resources	Contract Resources
<ul style="list-style-type: none"> • Check-In: Crew Manifest, Cooperative Agreement (if applies), AD Hire Letter, Resource Order • Daily: Crew Time Report (CTR), Shift Tickets 	<ul style="list-style-type: none"> • Check-In: Resource Order, Contract/VIPR Agreement (make sure you have your UEI, Pre-Inspection • Daily: Shift Tickets, receipts (fuel issues, claims, etc.)

REMINDERS

★ WE WILL BE COMPLETELY DIGITAL ON THIS INCIDENT. IF YOU NEED ASSISTANCE, PLEASE CONTACT FINANCE AT 2023.ridgecreek.finance@firenet.gov

- ★ PLEASE MAKE SURE C OR E # IS ON THE CTR OR SHIFT TICKET
- ★ PLEASE SHOW YOUR LUNCH BREAK
- ★ PLEASE USE MILITARY TIME (0001-2400)
- ★ WHEN CLAIMING HAZARD PAY YOU MUST INCLUDE THE SUPPRESSION ACTION BEING PERFORMED. THIS INCLUDES OPERATIONS WHICH DIRECTLY SUPPORT CONTROL OF FIRE (E.G., ACTIVITIES TO EXTINGUISH THE FIRE, FIREFIGHTING, GROUND SCOUTING, SPOT FIRE PATROLLING, SEARCH AND RESCUE OPERATIONS, AND BACKFIRING).
- ★ WHEN SIGNING YOUR OF-288 or OF-286 PLEASE DO NOT LOCK IT or PROTECT THE SIGNATURE, WE HAVE TO BE ABLE TO SIGN IT AND SEND YOU A COPY

For assistance with CLAIMS please submit a request to the finance inbox, subject comp/claims.

 **WE NEED YOUR FIRE PHOTOS** 

FOR NOW, PLEASE EMAIL TO:

2023.RIDGECREEK@FIRENET.GOV

Fire Activity & Behavior

Crews

Fire Apparatus

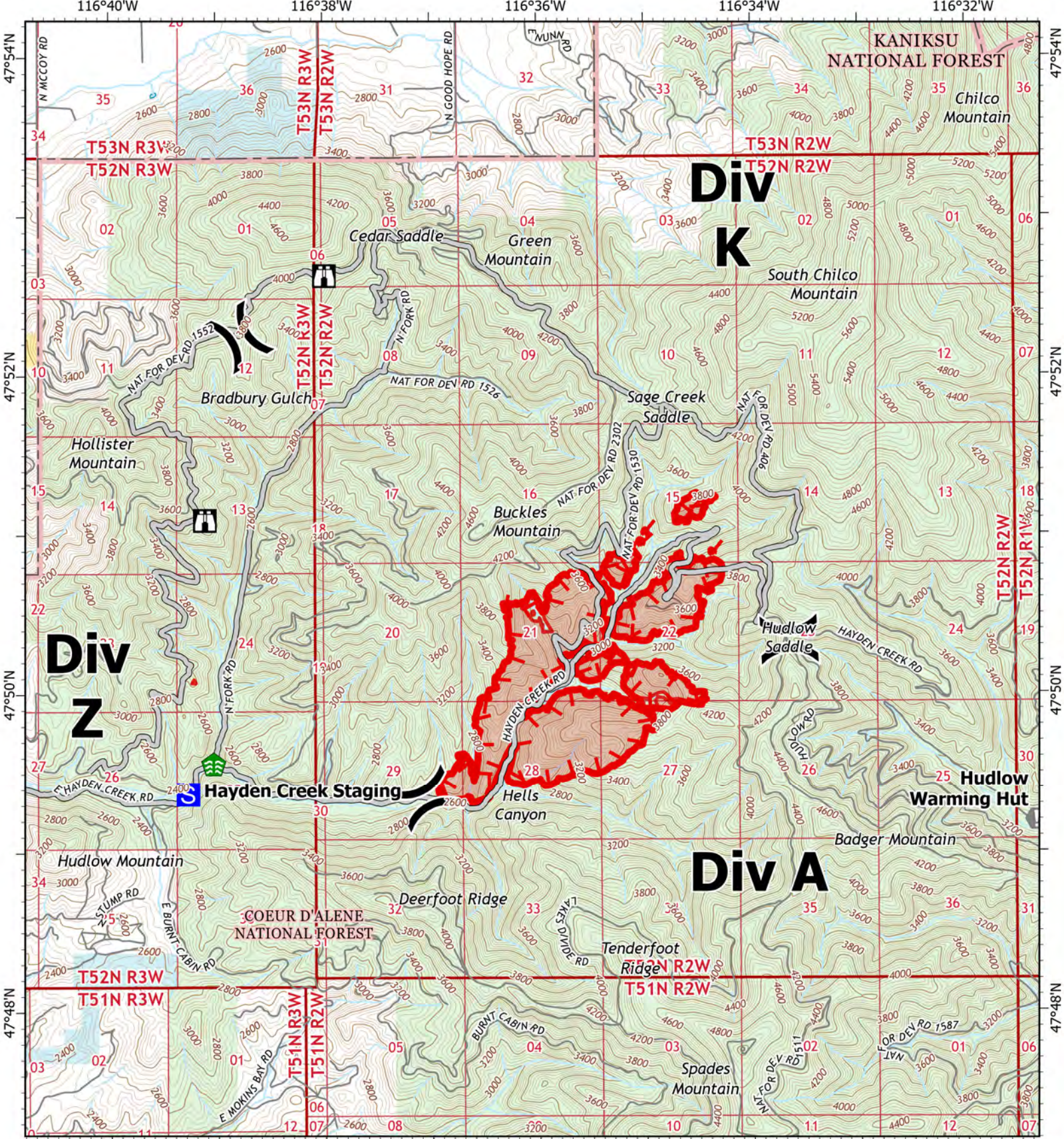
**Please include in your email your name
and crew so that we can correctly credit
your photos**

CHECK-IN PROCEDURE

- 1. Scan the QR code on the cover of the IAP and click the Check-in button**
 - **If you have questions, visit Check-In in the Plans yurt at ICP and we can assist you with the virtual form**
- 2. Check in with Finance – see the Finance page**

DEMOB PROCEDURE

Visit Check-In in the Plans yurt at ICP. The Demob process is mostly in person (not virtual) at this time.



IAP
RIDGE CREEK
IDIPF000447
08/08/2023 Day

1,073 acres at 8/4/2023 @ 2109 PST
 Acres from IR

0 0.5 1 Miles

- Local Road
- Forest Service
- Bureau of Land Management (BLM)
- State
- US Forest Service (USFS)
- Private
- Division Break
- Staging Area
- Lookout
- Value at Risk
- Stream Crossing
- Access or Improved Road
- Uncontained
- Wildfire Daily Fire Perimeter

EASTERN AREA
 incident management team

EA IMT
 08/07/2023 2045
 North American 1983 Datum, LatLong Grid

UNIT LOG	1. INCIDENT NAME	2. DATE PREPARED	3. TIME PREPARED
4. UNIT NAME/DESIGNATORS	5. UNIT LEADER (NAME AND POSITION)	6. OPERATIONAL PERIOD	
7. PERSONNEL ROSTER ASSIGNED			
NAME	ICS POSITION	TEAM/AGENCY	
<div style="display: flex; justify-content: space-between;"> <div style="width: 30%; border-right: 1px solid black;"></div> <div style="width: 35%; border-right: 1px solid black;"></div> <div style="width: 35%;"></div> </div>			
8. ACTIVITY LOG (CONTINUE ON REVERSE)			
TIME	MAJOR EVENTS		
<div style="display: flex; justify-content: space-between;"> <div style="width: 15%; border-right: 1px solid black;"></div> <div style="width: 85%;"></div> </div>			
ICS 214 3/98	9. PREPARED BY		

MEDICAL PLAN (ICS 206a WF)

Controlled Unclassified Information//Basic

Medical Incident Report

FOR A NON-EMERGENCY INCIDENT, WORK THROUGH CHAIN OF COMMAND TO REPORT AND TRANSPORT INJURED PERSONNEL AS NECESSARY.

FOR A MEDICAL EMERGENCY: IDENTIFY ON SCENE INCIDENT COMMANDER BY NAME AND POSITION AND ANNOUNCE "MEDICAL EMERGENCY" TO INITIATE RESPONSE FROM IMT COMMUNICATIONS/DISPATCH.

Use the following items to communicate situation to communications / dispatch.

1. CONTACT COMMUNICATIONS / DISPATCH (Verify correct frequency prior to starting report)

Ex: "Communications, Div. Alpha. Stand-by for Emergency Traffic."

2. INCIDENT STATUS: Provide incident summary (including number of patients) and command structure.

Ex: "Communications, I have a Red priority patient, unconscious, struck by a falling tree. Requesting air ambulance to Forest Road 1 at (Lat./Long.) This will be the Trout Meadow Medical, IC is TFLD Jones. EMT Smith is providing medical care."

Severity of Emergency / Transport Priority	<input type="checkbox"/> RED / PRIORITY 1 Life or limb threatening injury or illness. Evacuation need is IMMEDIATE <i>Ex: Unconscious, difficulty breathing, bleeding severely, 2° – 3° burns more than 4 palm sizes, heat stroke, disoriented.</i> <input type="checkbox"/> YELLOW / PRIORITY 2 Serious Injury or illness. Evacuation may be DELAYED if necessary. <i>Ex: Significant trauma, unable to walk, 2° – 3° burns not more than 1-3 palm sizes.</i> <input type="checkbox"/> GREEN / PRIORITY 3 Minor Injury or illness. Non-Emergency transport <i>Ex: Sprains, strains, minor heat-related illness.</i>	
Nature of Injury or Illness & Mechanism of Injury		<i>Brief Summary of injury or illness (Ex: Unconscious, Struck by Falling Tree)</i>
Transport Request		<i>Air Ambulance / Short Haul / Hoist Ground Ambulance / Other</i>
Patient Location		<i>Descriptive Location & Lat. Long (WGS84)</i>
Incident Name		<i>Geographic Name + "Medical" (Ex: Trout Meadow Medical)</i>
On-Scene Incident Commander		<i>Name of on-scene IC of incident within an Incident (Ex: TFLD Jones)</i>
Patient Care		<i>Name of Care Provider (Ex: EMT Smith)</i>

3. INITIAL PATIENT ASSESSMENT: Complete this section for each patient as applicable (start with the most severe patient)

Patient Assessment: See IRPG Page 106

Treatment:

4. TRANSPORT PLAN:

Evacuation Location (if different): (Descriptive Location (drop point, intersection, etc.) or Lat. / Long.) Patient's ETA to Evacuation Location:

Helispot / Extraction Site Size and Hazards:

5. ADDITIONAL RESOURCES / EQUIPMENT NEEDS:

Example: Paramedic/EMT, Crews, Immobilization Devices, AED, Oxygen, Trauma Bag, IV/Fluid(s), Splints, Rope rescue, Wheeled litter, HAZMAT, Extrication

6. COMMUNICATIONS: Identify State Air/Ground EMS Frequencies and Hospital Contacts as applicable

Function	Channel Name/Number	Receive (RX)	Tone/NAC *	Transmit (TX)	Tone/NAC *
COMMAND					
AIR-TO-GRND					
TACTICAL					

7. CONTINGENCY: Considerations: If primary options fail, what actions can be implemented in conjunction with primary evacuation method? Be thinking ahead.

8. ADDITIONAL INFORMATION: Updates/Changes, etc.

REMEMBER: Confirm ETA's of resources ordered. Act according to your level of training. Be Alert. Keep Calm. Think Clearly. Act Decisively.