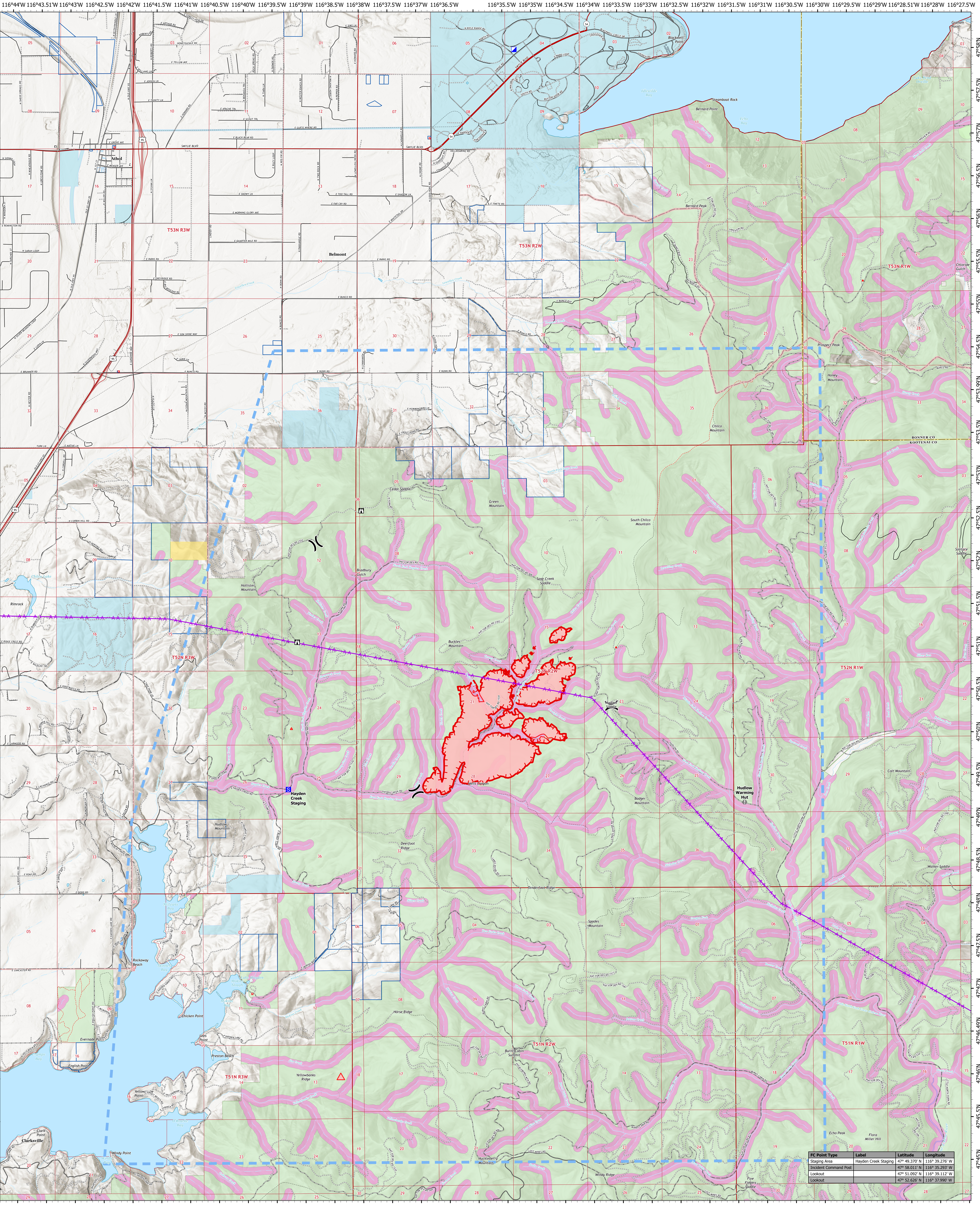


AIR OPERATIONS

8/8/2023 Day

RIDGE CREEK



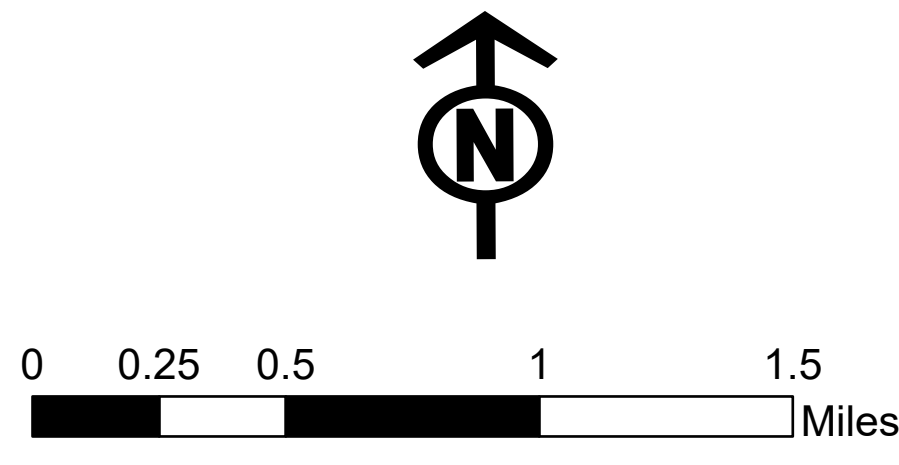
FC Point Type	Label	Latitude	Longitude
Staging Area	Hayden Creek Staging	47° 49.370' N	116° 39.276' W
Incident Command Post		47° 58.011' N	116° 35.293' W
Lookout		47° 51.092' N	116° 39.112' W
Lookout		47° 52.626' N	116° 37.990' W



RIDGE CREEK
IDIPF000447

1,073 Acres
8/4/2023 @ 2109 PST

Acres from IR
North American 1983 Datum.
Lat/Long Grid



- Retardant Avoidance Area
- Terrestrial
- Aquatic
- Division Break
- Incident Command Post
- Staging Area
- Lookout
- Value at Risk
- Aerial Hazard
- Temporary Flight Restriction
- Uncontaminated
- Wildfire Daily Fire Perimeter
- Timber Company Lands
- County or Equivalent
- FSTopp Transportation Lines
- Highway
- Highway w/Median
- Parking
- Road - Light Duty - Dirt
- Road - Light Duty - Gravel
- Road - Light Duty - Paved
- Road - Light Duty - Unspecified Composition
- Road - Unimproved
- Trail
- Trail - Nat Rec/Scenic/Historic
- Bureau of Land Management (BLM)
- State
- US Forest Service (USFS)

