

Ridge Creek

Incident Action Plan

0600-2200

Wednesday August 9, 2023



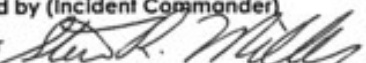
Photo Credit KHQ News

ID-IPF-000447

P1QG9D (0104)



QR Code to download the IAP and maps
<https://linktr.ee/2023ridgecreek>

INCIDENT OBJECTIVES	1. Incident Name Ridge Creek Fire	2. Date August 8, 2023	3. Time 1800
4. Operational Period: Wednesday, August 9, 2023 0600-2200			
5. General Control Objectives for the Incident <ul style="list-style-type: none"> • Provide for the protection of firefighter and public safety by implementing a course of action that achieves incident objectives while minimizing firefighter exposure, mitigating public safety issues, and is based on sound risk management principles • Protect infrastructure, private residences, private inholdings and businesses in the planning area from negative impacts by fire and mitigating smoke impacts when possible. This includes private inholdings and residences east of Hayden Lake and Hudlow Warming Hut • Minimize fire suppression impacts and fire effects of Hayden Creek and Hayden Lake and associated RHCA • Minimize fire impacts to timber values on private industrial timber lands and National Forest System lands. This includes Bottom Canyon and other planned timber sales and existing plantations • Minimize fire impacts to the Bonneville Power Administration Transmission lines north of the current fire area • Ensure active communications of fire status, planned management actions, and predicted fire behavior to Bonneville Power Administration so that the appropriate actions can be taken to manage the transmission lines • Use a deliberative risk management process that mitigates risk to firefighting resources and the public while pursuing a course of action to achieve incident objectives. Protection of human life is the highest priority on all actions. <ul style="list-style-type: none"> ○ Develop a population protection plan for private inholdings and residences east of Hayden Lake. Coordinate with Kootenai County Emergency Management. ○ Coordinate with the Kootenai County Sheriff on emergency evacuation plans as needed ○ Implement and maintain any road, trail, or area closures for public safety as needed • Build and maintain a high degree of trust with our partners, cooperators, stakeholders, and forest visitors by providing accurate, timely and well distributed information sharing • In addition to incident specific objectives and requirements, follow direction in strategic objectives and requirements found in the Ridge Creek WFDSS decision. 			
5b. Incident Commander's Intent Prioritized values at risk are: <ol style="list-style-type: none"> 1. Private property and residences 2. Hayden Creek and Hayden Lake Water Quality 3. Industrial timber lands and Bottom Canyon Timber Sales (Idaho Forest Group) and other planned timber sales 4. Bonneville Power Administration Transmission Line 5. Hudlow Warming Hut 6. Plantations 			
6. Weather Forecast & General Safety Message for Period – See Attached			
7. Attachments (mark if attached)			
<input checked="" type="checkbox"/> Organization List - ICS 203	<input checked="" type="checkbox"/> Weather Forecast	<input checked="" type="checkbox"/> Safety Message	
<input checked="" type="checkbox"/> Div. Assignment Lists - ICS 204	<input checked="" type="checkbox"/> Fire Behavior Forecast	<input checked="" type="checkbox"/> Medical Emergency Com Plan	
<input checked="" type="checkbox"/> Communications Plan - ICS 205	<input checked="" type="checkbox"/> Incident Map	<input type="checkbox"/>	
<input checked="" type="checkbox"/> Medical Plan - ICS 206	<input checked="" type="checkbox"/> Air Operations– ICS 220	<input type="checkbox"/>	
9. Prepared by (Planning Section Chief) Robbi Mecus – Deputy PSC	9. Approved by (Incident Commander) Steve Miller 		

ORGANIZATION ASSIGNMENT LIST (ICS 203)

1. Incident Name:		2. Operational Period: DAY	
RIDGE CREEK		Date/Time From: 08/09/2023 0600 WED	Date/Time To: 08/09/2023 2200 WED
3. Incident Commander(s) and Command Staff:		SECURITY UNIT	
IC/UC	STEVE MILLER CHRIS WOODS (T)	FOOD UNIT DEBBY BERDINE	
DEPUTY		7. Operations Section:	
SAFETY OFFICER	LEE OSTERLAND ; TERRY TRAPP KENT GLAZER (T)	FIELD OPS	CORY HENRY BRIAN WOLVERT (T)
INFORMATION OFFICER	CLARK MCCREEDY ; LARRY BICKEL ; BRIAN VANVICKLE KELLY MILLER (T) ; SUZ BOWERS- ZOSCHG (T)	PLANNING OPS	KEITH MURPHY DARREN BRIDGES (T)
LIAISON OFFICER	RON ROBINSON ; CECILE STELTER	STRATEGIC OPS	JOE ALYEA
		STAGING AREA	
4. Agency/Organization Representative(s):		DIVISION/GROUP	A TODD WOOD JOSHUA STROHMEYER (T)
Agency/Organization	Name	DIVISION/GROUP	K UNSTAFFED
USFS	RANDY SWICK HOLLY HAMPTON (T)	DIVISION/GROUP	Z CHRIS WHITE
IDL	ANDREW SMYTH ERIK SJOQUIST	7b. Air Operations Branch:	
RESOURCE ADVISORS	WILL YOUNG ; MATT SLIFKO CHRIS ROBINSON (T)	AIR OPS BRANCH DIRECTOR	JOHN FISH
5. Planning Section:		AIR ATTACK SUPERVISOR	
CHIEF	PETER FISCHER ; ROBBI MECUS AARON YOUNG (T)	AIR SUPPORT SUPERVISOR	
RESOURCES UNIT	GLENN PALMGREN BARRY REID (T) ; MATT TONELLO (T)	HELICOPTER COORDINATOR	
SITUATION UNIT	BEN GARRETT THOMAS TARABELLI (T)	AIR TANKER COORDINATOR	
DOCUMENTATION UNIT		8. Finance/Administration Section:	
DEMOBILIZATION UNIT		CHIEF	DAVE DUKART PETER BERINGER (V)
FIRE BEHAVIOR ANALYST		DEPUTY	
INCIDENT METEOROLOGIST		TIME UNIT	CAROLE WEIKLE (T)
GIS SPECIALIST	JEFF SPROVKIN PETER ROSE	PROCUREMENT UNIT	
TECHNOLOGY SUPPORT SPECIALIST	JOHN COSTELLO MARK ERICKSON (T)	COMPENSATION UNIT	FARRAH SCALORA (V)
6. Logistics Section:		COST UNIT	JENNIFER GALLAGHER (V)
CHIEF	SCOTT CARRIGAN ; STEVE SCHUG		
DEPUTY			
SUPPLY UNIT	BRYAN GALLAGHER		
FACILITIES UNIT			
GROUND SUPPORT UNIT			
COMMUNICATIONS UNIT	ARNOLD IRVINE		
MEDICAL UNIT	ROBERT WHITE ; MIKE PASSARELLI ROBERT EGGERT (T)		
9. Prepared By:	Name: GLENN PALMGREN	Position/Title: RESL	Signature:
ICS 203	IAP Page	Date/Time: 08/08/2023 1900	

.WEDNESDAY NIGHT...

Sky/weather.....Partly cloudy. Chance of sprinkles in the evening.
CWR.....Near 0 percent.
LAL.....1.
Min temperature.....Around 57.
Max humidity.....66 percent.
Wind (20 ft).....Southwest winds 6 to 11 mph. Gusts to 25 mph in the evening.
Mixing height.....Lowering to less than 1000 ft AGL overnight.
Transport winds.....Southwest 12 to 13 mph.
Haines Index.....2 Very Low.

.THURSDAY...

Sky/weather.....Partly to mostly sunny.
CWR.....0 percent.
LAL.....1.
Max temperature.....Around 73.
Min humidity.....36 percent.
Wind (20 ft).....Southwest winds 10 to 13 mph with gusts to around 19 mph.
Mixing height.....5000 ft AGL increasing to 7000 ft AGL in the afternoon.
Transport winds.....Southwest 16 to 18 mph.
Haines Index.....2 Very Low.

Forecaster...RP
Requested by...Ben Garrett SITL
Type of request...WILDFIRE
08/08/23

FIRE BEHAVIOR FORECAST

FORECAST NUMBER: 3	TYPE OF FIRE Wildfire
FIRE NAME: Ridge Creek	OPERATIONAL PERIOD Day Shift 08/09/2023
DATE ISSUED 08/8/2023	TIME ISSUED 1800
UNIT ID-IPF-000447	SIGNED Benjamin Garrett SITL

INPUTS

WEATHER SUMMARY:

DISCUSSION... There will be another small chance of showers on Wednesday with the passage of a cold front. The wind will also increase along and behind the front. Gusts of 15 to 20 mph are a good bet along ridge tops and other aspects exposed to west or southwest winds.

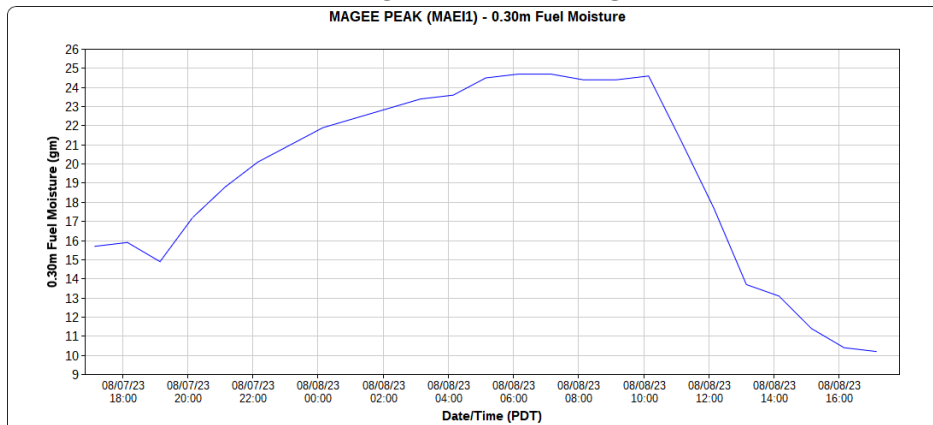
****See spot weather forecast for specifics****

Temp: Maximum around 76, minimum around 60
RH: Minimum around 39%, max around 77%
Winds: Southwest 6 to 11 mph gusting to 25 mph

Fuels & Fuel Moisture:

MAGEE PEAK RAWS

MAGEE PEAK (MAE11) - 0.30m Fuel Moisture



FIRE BEHAVIOR

GENERAL

Fire behavior will start to pick up today as the RH begins to fall. Fine fuels will be more receptive and expect some activity in the heavier fuels. Pay attention to the gusty winds following the week cold front passage, especially on the ridgetops and in areas where winds align with the terrain.

SPECIFIC

SPECIFIC FIRE BEHAVIOR:

A day of drying and gusty winds will bring more active fire behavior. Heavy fuels will begin to add more intensity as they become available for consumption. Fine fuels will be more receptive to spotting and short runs.

SAFETY

Gusty erratic winds can lead to hazards. Higher fire behavior that expected is possible as slope and wind align, so don't get complacent.

DIVISION ASSIGNMENT LIST			1. Branch		2. Division A (Page 1 / 2)	
3. Incident Name RIDGE CREEK			4. Operational Period Date: 08/09/2023 Time: 0600 - 2200			
5. Operations Personnel						
Field Operations Section Chief		Cory Henry/Brian Wolvert (T)		Branch Director		
Planning Operations Section Chief		Keith Murphy/Darren Bridges (T)		Division Supervisor		Todd Wood/Josh Strohmeier (T) 602-617-2017
6. Resources Assigned this Period						
RO#	Strike Team/Task Force/ Resource Designator	Leader	# People	LWD	Drop Off PT./Time	Pick Up PT./Time
C-5	CRW1 - KLAMATH IHC	Owensbey	19	8/21	ICP/0600	ICP/2200
C-8	CRW1 Black Mountain IHC	Milligan	22	8/22	ICP/0600	ICP/2200
C-7	CR2I - FIRESTORM WILDLAND FIRE NCC 7A	Norlie	20	8/21	ICP/0600	ICP/2200
C-16	CRW2 - T2C214 ROCHA REFORESTATION	Cruz	20	8/15	ICP/0600	ICP/2200
E-28	ENG4 IPF E432	Owens	3		ICP/0600	ICP/2200
E-11	ENG6 NDND5 E5275	Warmuth	4	8/21	ICP/0600	ICP/2200
	ENG6 Ocala	O'Brien	5	8/9	ICP/0600	ICP/2200
E-3	WTS2 St. Florian		1	8/17	ICP/0600	ICP/2200
E-4	WTS2 Martin	Martin	1	8/17	ICP/0600	ICP/2200
E-31	DZR2 – Patrick Madden - S01069	Madden	2	8/20	ICP/0600	ICP/2200
E-5	DZR2 Table Rock Forestry S00177		6		ICP/0600	ICP/2200
E-8	EXC2 - FOUSTS INC - 35616		1		ICP/0600	ICP/2200
7. Control Operations: TASK -Continue preparing and securing control line on South end of fire PURPOSE -Keep fire West of 406 END STATE -Stop easterly progression of the fire beyond 406 Road						
8. Special Instructions: Utilize field maps for drop points, safety zones, and potential helispots Ensure that comms are functional throughout the entire division. Stay hydrated. Local engines are also available for IA. Make sure escape routes and safety zones are identified and known.						
9. Division/Group Communication Summary						
Communications Summary						
Channel	Function	RX Frequency	RX Tone	TX Frequency	TX Tone	
1 TAC 1	TAC	168.0500 N	110.9	168.0500 N	110.9	
6 MICA BLM Primary	CMD 1	164.5250 N	NONE	163.0250 N	100.0	
7 Monument FS-Secondary	CMD 2	169.9250 N	107.2	165.5625 N	131.8	
12 Air to Ground Primary	A/G	167.1250 N	NONE	167.1250 N	NONE	
13 AIR TO GROUND SECONDARY	A/G	166.6125 N	NONE	166.6125 N	NONE	
16 Air Guard	AIRGUARD	168.6250 N	NONE	168.6250 N	110.9	
Prepared by (Resource Unit Ldr(t)) <i>Barry Reid</i>				Date 08/08/2023	Time 1730	

DIVISION ASSIGNMENT LIST				1. Branch	2. Division		A (Page 2 / 2)
3. Incident Name RIDGE CREEK				4. Operational Period Date: 08/09/2023 Time: 0600 - 2200			
5. Operations Personnel							
Field Operations Section Chief		Cory Henry/Brian Wolvert (T)		Branch Director			
Planning Operations Section Chief		Keith Murphy/Darren Bridges (T)		Division Supervisor		Todd Wood/Josh Strohmeier (T) 602-617-2017	
6. Resources Assigned this Period							
RO#	Strike Team/Task Force/ Resource Designator	Leader	# People	LWD	Drop Off PT./Time	Pick Up PT./Time	
E-32	EXC2 – Altered Aspects, LLC - A85027	Hess	2	8/20	ICP/0600	ICP/2200	
O-35	TFLD	Jerman	1	8/21	ICP/0600	ICP/2200	
O-32	TFLD David Taylor	Taylor	1	8/22	ICP/0600	ICP/2200	
	HEQB (t)	Vickers	1		ICP/0600	ICP/2200	
O-6.36	SOFR	Banaszak	1	8/19	ICP/0600	ICP/2200	
O-20	EMTF Steve Wolfstitch	Wolfstitch	1	8/20	ICP/0600	ICP/2200	
7. Control Operations: TASK -Continue preparing and securing control line on South end of fire PURPOSE -Keep fire West of 406 END STATE -Stop easterly progression of the fire beyond 406 Road							
8. Special Instructions: Utilize field maps for drop points, safety zones, and potential helispots Ensure that comms are functional throughout the entire division. Stay hydrated. Local engines are also available for IA. Make sure escape routes and safety zones are identified and known.							
9. Division/Group Communication Summary							
Communications Summary							
Channel	Function	RX Frequency	RX Tone		TX Frequency	TX Tone	
1 TAC 1	TAC	168.0500 N	110.9		168.0500 N	110.9	
6 MICA BLM Primary	CMD 1	164.5250 N	NONE		163.0250 N	100.0	
7 Monument FS-Secondary	CMD 2	169.9250 N	107.2		165.5625 N	131.8	
12 Air to Ground Primary	A/G	167.1250 N	NONE		167.1250 N	NONE	
13 AIR TO GROUND SECONDARY	A/G	166.6125 N	NONE		166.6125 N	NONE	
16 Air Guard	AIRGUARD	168.6250 N	NONE		168.6250 N	110.9	
Prepared by (Resource Unit Ldr(t)) <i>Barry Reid</i>					Date 08/08/2023	Time 1730	

DIVISION ASSIGNMENT LIST				1. Branch		2. Division K (Unstaffed)	
3. Incident Name RIDGE CREEK				4. Operational Period Date: 08/09/2023 Time: 0600 - 2200			
5. Operations Personnel							
Field Operations Section Chief		Cory Henry/Brian Wolvert (T)		Branch Director			
Planning Operations Section Chief		Keith Murphy/Darren Bridges (T)		Division Supervisor			
6. Resources Assigned this Period							
RO#	Strike Team/Task Force/	Resource Designator	Leader	# People	LWD	Drop Off PT./Time	Pick Up PT./Time
7. Control Operations:							
8. Special Instructions:							
9. Division/Group Communication Summary							
Communications Summary							
Channel	Function	RX Frequency	RX Tone		TX Frequency	TX Tone	
Prepared by (Resource Unit Ldr(t)) <i>Barry Reid</i>					Date 08/08/2023	Time 1730	

DIVISION ASSIGNMENT LIST			1. Branch		2. Division Z (Page 1 / 2)	
3. Incident Name RIDGE CREEK			4. Operational Period Date: 08/09/2023 Time: 0600 - 2200			
5. Operations Personnel						
Field Operations Section Chief		Cory Henry/Brian Wolvert (T)		Branch Director		
Planning Operations Section Chief		Keith Murphy/Darren Bridges (T)		Division Supervisor		Chris White
6. Resources Assigned this Period						
RO#	Strike Team/Task Force/ Resource Designator	Leader	# People	LWD	Drop Off PT./Time	Pick Up PT./Time
O-13	FMOD Newman	Harris	2	8/19	ICP/0600	ICP/2200
E-6	ENG6 NDND5 E5274	Mountain	4	8/20	ICP/0600	ICP/2200
E-9	WTT2 Sagle	Stuckey	2	8/19	ICP/0600	ICP/2200
E-1	DOZ2 Foust		1		ICP/0600	ICP/2200
E-2	EXC2 Foust 35653		1		ICP/0600	ICP/2200
E-7	GRD1 Foust L00652		1		ICP/0600	ICP/2200
E-25	HETF AKRE LOGGING, LLC AKRE 1	Akre	7	8/20	ICP/0600	ICP/2200
E-27	HETF Bonnali	Bonnali	8	8/20	ICP/0600	ICP/2200
E-33	FEL1 - Equipment Technologies LLC-A2128	Mayo	2	8/20	ICP/0600	ICP/2200
7. Control Operations:						
TASK -Continue preparing line on FSR 437 and 625 and on indirect line connecting FSR 625 and FSR 406						
PURPOSE - Keep fire north of Hell's Canyon and east of the north fork of the Hayden to protect private residences and industrial land to the southwest						
END STATE - Stop southerly progression of fire beyond 206 Rd						
8. Special Instructions:						
Utilize field maps for drop points, safety zones, and potential helispots Ensure that comms are functional throughout the entire division. Stay hydrated. Local engines are also available for IA. Make sure escape routes and safety zones are identified and known.						
9. Division/Group Communication Summary						
Communications Summary						
Channel	Function	RX Frequency	RX Tone	TX Frequency	TX Tone	
3 TAC 3	TAC	168.6000 N	110.9	168.600N	110.9	
1 MICA BLM	COMMAND	164.5250	NONE	163.0250	100.0	
7 Monument FS-Secondary	COMMAND	169.9250 N	107.2	165.5625 N	131.8	
12 Air to Ground Primary	A/G	167.1250 N	NONE	167.1250 N	NONE	
13 AIR TO GROUND SECONDARY	A/G	166.6125 N	NONE	166.6125 N	NONE	
16 Air Guard	AIRGUARD	168.6250 N	NONE	168.6250 N	110.9	
Prepared by (Resource Unit Ldr(t)) <i>Barry Reid</i>				Date 08/08/2023	Time 1730	

DIVISION ASSIGNMENT LIST			1. Branch		2. Division Z (Page 2 / 2)	
3. Incident Name RIDGE CREEK			4. Operational Period Date: 08/09/2023 Time: 0600 - 2200			
5. Operations Personnel						
Field Operations Section Chief		Cory Henry/Brian Wolvert (T)		Branch Director		
Planning Operations Section Chief		Keith Murphy/Darren Bridges (T)		Division Supervisor		Chris White
6. Resources Assigned this Period						
RO#	Strike Team/Task Force/ Resource Designator	Leader	# People	LWD	Drop Off PT./Time	Pick Up PT./Time
O-66	TFLD	Schelin	1		ICP/0600	ICP/2200
O-37	TFLD(t)	Cobb	1		ICP/0600	ICP/2200
O-2	HEQB	Hijos``	1	8/17	ICP/0600	ICP/2200
O-12	HEQB	Lechter	1	8/20	ICP/0600	ICP/2200
O-25	HEQB	Rexrode	1	8/22	ICP/0600	ICP/2200
	HEQB (t)	Schumacker	1		ICP/0600	ICP/2200
O-38	HEQB (t)	Hess	1	8/20	ICP/0600	ICP/2200
O-34	HEQB)t)	Harger	1	8/22	ICP/0600	ICP/2200
O-1.2	SOFR	Wurzauf	1	8/18	ICP/0600	ICP/2200
O-19	EMTF Wilderness Medics				ICP/0600	ICP/2200
E-30	AMB1 BOUNDARY AMB SERVICE - UNIT 2			8/20	ICP/0600	ICP/2200
7. Control Operations: TASK -Continue preparing line on FSR 437 and 625 and on indirect line connecting FSR 625 and FSR 406 PURPOSE - Keep fire north of Hell's Canyon and east of the north fork of the Hayden to protect private residences and industrial land to the southwest END STATE - Stop southerly progression of fire beyond 206 Rd						
8. Special Instructions: Utilize field maps for drop points, safety zones, and potential helispots Ensure that comms are functional throughout the entire division. Stay hydrated. Local engines are also available for IA. Make sure escape routes and safety zones are identified and known.						
9. Division/Group Communication Summary						
Communications Summary						
Channel	Function	RX Frequency	RX Tone	TX Frequency	TX Tone	
3 TAC 3	TAC	168.6000 N	110.9	168.600N	110.9	
1 MICA BLM	COMMAND	164.5250	NONE	163.0250	100.0	
7 Monument FS-Secondary	COMMAND	169.9250 N	107.2	165.5625 N	131.8	
12 Air to Ground Primary	A/G	167.1250 N	NONE	167.1250 N	NONE	
13 AIR TO GROUND SECONDARY	A/G	166.6125 N	NONE	166.6125 N	NONE	
16 Air Guard	AIRGUARD	168.6250 N	NONE	168.6250 N	110.9	
Prepared by (Resource Unit Ldr(t)) <i>Barry Reid</i>				Date 08/08/2023	Time 1730	

AIR OPERATIONS SUMMARY 220	Prepared By: John Fish	Prepared: 08/08/2023	Prepared Time: 1600 hrs.		
INCIDENT NAME: Ridge Creek Fire	OPERATIONAL PERIOD 8/9/23	START TIME 0900	END TIME 2000	SUNRISE 0534	SUNSET 2009

REMARKS - All aircraft orders thru Air Attack if on scene, otherwise thru AOBD (cell phone) - Large Electric Transmission Line through center of fire area	MEDICAL RESPONSE AIRCRAFT * Follow Medical Plan ICS-206 *	TFR Ridge Creek 3/8181 8,000 feet MSL. 0700 – 2100 Hours
---	---	--

PERSONNEL	NAME	PHONE #	FREQUENCIES	AM	FM	FIXED-WING Avail/ Type/ Make-Model/ N#/ Base
AOBD	John Fish	850-843-0977	A/G PRI		167.1250	ATGS Platforms: N76WA Call Sign – AA 104
ASGS			A/G SEC		166.6125	F/W Bases: Coeur d’Alene Airport (COE)
ATGS ATGS(T)	Matt Counts Sam Bullington	406-270-7437 406-547-4416				R/W Bases: Coeur d’Alene Airport (COE) Sand Point
						Air Tankers LATs – T105 & T132 SEATs – FB-205, FB-206, FB-217, FB-219

HELICOPTERS

FAA N#	TY	MAKE/ MODEL	BASE	START	AVAIL	REMARKS	FAA N#	TY	MAKE/ MODEL	BASE	START	AVAIL	REMARKS
N258PJ	1	CH-47D	COE	0800	0900	Bucket							
N214B	1	B214	Sand Point	0800	0900	Bucket							
N214KA	2	B212	COE	0800	0900	Bucket							
N28HX	2	B205+	COE	0800	0900	Bucket/Rappel							
N102RF	3	AS350B2	COE	0800	0900	Bucket/Recon							

INCIDENT RADIO COMMUNICATIONS PLAN (ICS 205)

Controlled Unclassified Information//Basic

1. Incident Name:	2. Date/Time Prepared:	3. Operational Period: DAY SHIFT	
Ridge Creek Fire	Date: 08/08/23 Time: 1100	Date/Time From: 08/09/23 0600	Date/Time To: 08/09/23 2200

4. Basic Radio Channel Use:										
Zone Group	Ch #	Function	Channel Name	Assignment	RX Freq	RX Tone/NAC	TX Freq	TX Tone/NAC	Mode (A,D, or M)	Remarks
1	1	TACTICAL	TAC 1	DIV A	168.0500 N	110.9	168.0500 N	110.9	A	
1	2	TACTICAL	TAC 2	DIV K	168.2000 N	110.9	168.2000 N	110.9	A	Not Staffed
1	3	TACTICAL	TAC 3	DIV Z	168.6000 N	110.9	168.6000 N	110.9	A	
1	4	TACTICAL	TAC 4	Structure Group	166.7250 N	110.9	166.7250 N	110.9	A	Not Staffed
1	6	COMMAND	CMD 1	ALL DIVS	164.5250 N	NONE	163.0250 N	100.0	A	BLM MICA RPTR PRIMARY
1	7	COMMAND	CMD 2	ALL DIVS	169.9250 N	107.2	165.5625 N	131.8	A	FS MONUMENT SECONDARY
1	12	TACTICAL	AIR TO GROUND PRIMARY	All Divs	167.1250 N	NONE	167.1250 N	NONE	A	A/G PRIMARY
1	13	TACTICAL	AIR TO GROUND SECONDARY	All Divs	166.6125 N	NONE	166.6125 N	NONE	A	A/G SECONDARY
1	14	EMS	EMS	EMS 2	155.2800 N	NONE	155.2800 N	156.7	A	EMS 2
1	16	AIR GUARD	AIRGUARD	ALL DIVS	168.6250 N	NONE	168.6250 N	110.9	A	EMERGENCY CALL TO AIRCRAFT

5. Special Instructions:

6. Prepared By	Communications Unit Leader	Name: : ARNIE IRVINE	Signature: /s/ Arnie Irvine
			Date/Time 8/8/23 1800

MEDICAL PLAN (ICS 206 WF)

Controlled Unclassified Information//Basic

1. Incident/Project Name				2. Operational Period				
Ridge Creek Fire				Date/Time 0600 – 0600		8/9/2023 to 8/10/2023		
3. Ambulance Services								
Name	Complete Address	Phone & EMS Frequency		Advanced Life Support (ALS)				
				Yes	No			
Timber Lake Fire Protection	5984 E Highway 54 Athol Id 54 west of 95	208-772-3283		<input type="checkbox"/>	<input checked="" type="checkbox"/>			
Kootenai County EMS	4381 W. Seltice Way CDA, ID	208-930-4224		<input checked="" type="checkbox"/>	<input type="checkbox"/>			
4. Air Ambulance Services								
Name	Phone	Type of Aircraft & Capability						
Life Flight	Hayden or Sandpoint ID	208-772-3283						
Short Haul or Hoist	Through Coeur d Alene Dispatch	208-772-3283						
Agency Helo	USFS Coeur d Alene Dispatch	208-772-3283						
5. Hospitals								
Name Complete Address	GPS Datum – WGS 84 Coordinate Standard Degrees Decimal Minutes DD° MM.MMM' N - Lat DD° MM.MMM' W - Long	Travel Air	Time Gnd	Phone	Helipad Yes No		Level of Care Facility	
Kootenai General Hospital Coeur d'Alene	Lat: 47 45.658 N	15 min	30 min	208-625-4000	<input checked="" type="checkbox"/>	<input type="checkbox"/>	Level 2 Trauma	
	Long: 116 47 41.684W							
	VHF:							
Bonner General Hospital Sandpoint, ID	Lat: 48 16.650	15 min	60 min	208-263-1441	<input checked="" type="checkbox"/>	<input type="checkbox"/>	Level 4 Trauma	
	Long: 116 32.92							
	VHF:							
Sacred Heart Medical	Lat: 47 38.500	25 min	120 min	509-474-3131	<input checked="" type="checkbox"/>	<input type="checkbox"/>	Level 2 Trauma	
	Long: 117 24.800							
	VHF:							
Harbour View Medical Center	Lat: 47 36.238	120 min	300 min	206-744-3074 206744-5735 Burn center #	<input checked="" type="checkbox"/>	<input type="checkbox"/>	Level 1 Trauma & Burn Center	
	Long: 122 19.461							
	VHF:							
Northwest Urgent Care 7173 E Super I Loop SuiteA Athol, ID Intersection of 54 & 95			10 min		<input type="checkbox"/>	<input checked="" type="checkbox"/>	Urgent care only Hours: 0800-1800 M-F 0800-1600 S-S	
6. Division Branch Group		Area Location Capability						
A		EMS Responders & Capability:		EMT Steve Wolfstich (520) 508-9807				
		Equipment Available on Scene:		BLS				
		Medical Emergency Channel:						
		ETA for Ambulance to Scene:						
		Air:		40min				
		Ground:		10 min to the Alpha/Zulu Break				
		Approved Helispot:		A/K				
		Lat:		N47 49.490		N47 50.335		
		Long:		116 35.685		116 33.685		
		K		EMS Responders & Capability:		Unstaffed		
Equipment Available on Scene:								
Medical Emergency Channel:								
ETA for Ambulance to Scene:								
Air:								
Ground:								
Approved Helispot:								

MEDICAL PLAN (ICS 206 WF)

Controlled Unclassified Information//Basic

7. Name & Location	Remote Camp Location(s)		
Z	Point of Contact:	Lisa Axel (612) 532-5181 EMT	Ambulance Frank (208) 715-5038
	EMS Responders & Capability:	EMT & ALS Ambulance	
	Equipment Available on Scene:	ALS	
	Medical Emergency Channel:		
	ETA for Ambulance to Scene:		
	Air:	40 min	
	Ground:	10 min to the Alpha/Zulu break	
	Approved Helispot:		
	Lat:	N47 49.300	
	Long:	116 39.650	
	Point of Contact:		
	EMS Responders & Capability:		
	Equipment Available on Scene:		
Medical Emergency Channel:			
ETA for Ambulance to Scene:			
Air:			
Ground:			
Approved Helispot:			
Lat:			
Long:			
8. Prepared By (Medical Unit Leader)	9. Date/Time	10. Reviewed By (Safety Officer)	11. Date/Time
Mike Passarelli MEDL <i>Mike Passarelli MEDL</i>	8/8/23 1700	Lee Osterland <i>K + Lee for Osterland</i>	8/8/23 1700

Safety Message

Incident:
Ridge Creek

Date:
8/09/2023

Shift:
Day

CAN YOU AS A FIREFIGHTER ANSWER YES TO EACH OF THE FOLLOWING QUESTIONS BEFORE ENGAGING IN FIRE SUPPRESSION ACTIVITIES?

- Can you describe the fire environment you are going to operate in?
- Do you know the fire weather forecast for today?
- Do you understand the suppression organization you are assigned to?
- Is there a plan and do you understand it?
- Have you assessed the fire behavior and made a prediction?
- Are you interactive with the:

10 Standard Fire Orders

18 Situations that Shout Watch Out

Common Denominators of Tragedy Fires

- Will you have the *Lookouts, Communications, Escape Routes, and Safety Zones* in place?
- Do you know it is OK to ask questions and ensure that the instructions you are given provide for your safety and the safety of your fellow firefighters?
- Do you understand that it is both your responsibility and you right to say **NO** to orders that cannot be accomplished without compromising one or more of the *10 Standard Fire Orders* or without mitigating each of the *18 Situations that Shout Watchout*?
- Are you prepared to engage, monitor the fire environment, to be pro-active & make adjustments?

**Safety is an attitude based on awareness of your environment and capabilities.
Decision making (at all levels) represents one human characteristic that can greatly influence your safety and effectiveness.
All personnel are responsible for adhering to safe practices & correcting violations.
Accidents are the result of inadequate assessments of hazards.**

Have a safe shift! Safety Officers: Terry Trapp, Lee Osterland, Kenneth Glazer, Tim Banaszak, Doug Wurzauf



Finance Message

Finance Email: 2023.ridgecreek.finance@firenet.gov

SUBJECT: *Include Key Word* **TIME** for Overhead, Crews & Cooperators
SUBJECT: *Include Key Word* **EQUIPMENT** for Contract

FINANCE CHECK IN:

2023.ridgecreek.finance@firenet.gov

PLEASE ENSURE THE BELOW DOCUMENTS ARE EMAILED

Overhead, Crews & Cooperator Resources	Contract Resources
<ul style="list-style-type: none"> • Check-In: Crew Manifest, Cooperative Agreement (if applies), AD Hire Letter, Resource Order • Daily: Crew Time Report (CTR), Shift Tickets 	<ul style="list-style-type: none"> • Check-In: Resource Order, Contract/VIPR Agreement (make sure you have your UEI, Pre-Inspection • Daily: Shift Tickets, receipts (fuel issues, claims, etc.)

REMINDERS

- ★ WE WILL BE COMPLETELY DIGITAL ON THIS INCIDENT. IF YOU NEED ASSISTANCE, PLEASE CONTACT FIANNCE AT 2023.ridgecreek.finance@firenet.gov
- ★ PLEASE MAKE SURE C OR E # IS ON THE CTR OR SHIFT TICKET
- ★ PLEASE SHOW YOUR LUNCH BREAK
- ★ PLEASE USE MILITARY TIME (0001-2400)
- ★ WHEN CLAIMING HAZARD PAY YOU MUST INCLUDE THE SUPPRESSION ACTION BEING PERFORMED. THIS INCLUDES OPERATIONS WHICH DIRECTLY SUPPORT CONTROL OF FIRE (E.G., ACTIVITIES TO EXTINGUISH THE FIRE, FIREFIGHTING, GROUND SCOUTING, SPOT FIRE PATROLLING, SEARCH AND RESCUE OPERATIONS, AND BACKFIRING).
- ★ WHEN SIGNING YOUR OF-288 or OF-286 PLEASE DO NOT LOCK IT or PROTECT THE SIGNATURE, WE HAVE TO BE ABLE TO SIGN IT AND SEND YOU A COPY

For assistance with CLAIMS please submit a request to the finance inbox, subject comp/claims.

CHECK-IN PROCEDURE

- 1. Scan the QR code on the cover of the IAP and click the Check-in button**
 - If you have questions, visit Check-In in the Plans yurt at ICP and we can assist you with the virtual form**
- 2. Check in with Finance – see the Finance page**

DEMOB PROCEDURE

Visit Check-In in the Plans yurt at ICP. The Demob process is mostly in person (not virtual) at this time.

Any flight requests need to be provided to Resources/Check-In at least 72 hours before your anticipated demob time.

RESOURCE ADVISOR MESSAGE

Camp cleanliness

- Improves sanitation.
- Minimizes human wildlife conflict.
- Maintains good working relationships with partners.



Archaeological Sites

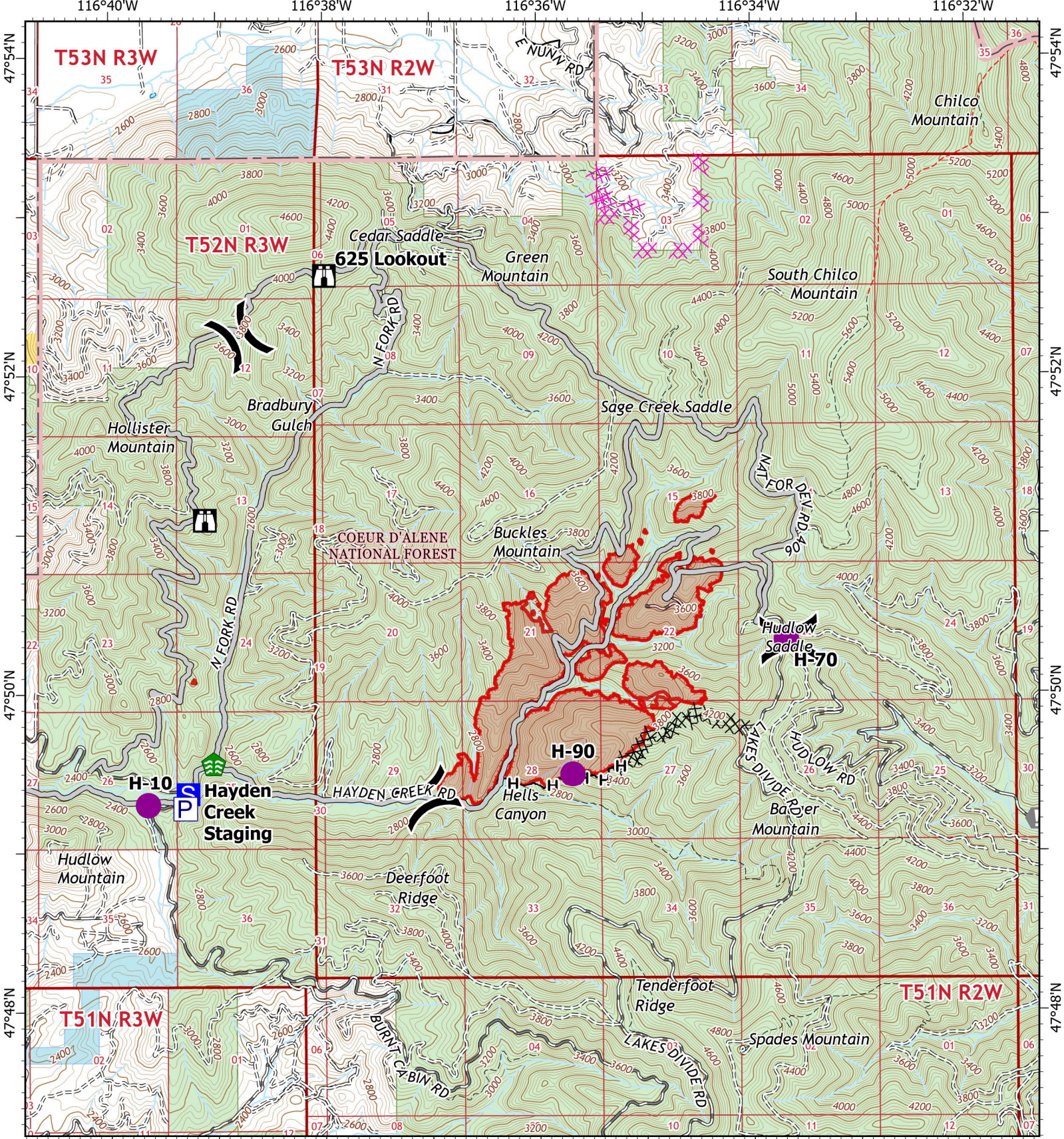
- If found report to READ
- Leave artifacts in place
- If arch site cannot be avoided, use MIST tactics on page 96 of IRPG.

Assigned Resource Advisors on Incident:

Will Young (READ)

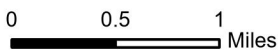
Matt Slifko (REAF)

Chris Robinson (REAF (t))



IAP
RIDGE CREEK
IDIPF000447
08/09/2023 Day

1,073 acres at 8/4/2023 @ 2109 PST
 Acres from IR



- | | | |
|-----------------|-------------------------|---------------------------------|
| Helispot | Pump | Bureau of Land Management (BLM) |
| Division Break | Completed Dozer Line | State |
| Staging Area | Completed Hand Line | US Forest Service (USFS) |
| Lookout | Planned Dozer Line | Private |
| Value at Risk | Access or Improved Road | Wildfire Daily Fire Perimeter |
| Stream Crossing | Uncontained | |



<h1 style="margin:0;">UNIT LOG</h1>	1. INCIDENT NAME	2. DATE PREPARED	3. TIME PREPARED
4. UNIT NAME/DESIGNATORS	5. UNIT LEADER (NAME AND POSITION)	6. OPERATIONAL PERIOD	
7. PERSONNEL ROSTER ASSIGNED			
NAME	ICS POSITION	TEAM/AGENCY	
8. ACTIVITY LOG (CONTINUE ON REVERSE)			
TIME	MAJOR EVENTS		
ICS 214 3/98	9. PREPARED BY		

MEDICAL PLAN (ICS 206a WF)

Controlled Unclassified Information//Basic

Medical Incident Report

FOR A NON-EMERGENCY INCIDENT, WORK THROUGH CHAIN OF COMMAND TO REPORT AND TRANSPORT INJURED PERSONNEL AS NECESSARY.

FOR A MEDICAL EMERGENCY: IDENTIFY ON SCENE INCIDENT COMMANDER BY NAME AND POSITION AND ANNOUNCE "MEDICAL EMERGENCY" TO INITIATE RESPONSE FROM IMT COMMUNICATIONS/DISPATCH.

Use the following items to communicate situation to communications / dispatch.

1. CONTACT COMMUNICATIONS / DISPATCH (Verify correct frequency prior to starting report)

Ex: "Communications, Div. Alpha. Stand-by for Emergency Traffic."

2. INCIDENT STATUS: Provide incident summary (including number of patients) and command structure.

Ex: "Communications, I have a Red priority patient, unconscious, struck by a falling tree. Requesting air ambulance to Forest Road 1 at (Lat./Long.) This will be the Trout Meadow Medical, IC is TFLD Jones. EMT Smith is providing medical care."

Severity of Emergency / Transport Priority	<input type="checkbox"/> RED / PRIORITY 1 Life or limb threatening injury or illness. Evacuation need is IMMEDIATE <i>Ex: Unconscious, difficulty breathing, bleeding severely, 2° – 3° burns more than 4 palm sizes, heat stroke, disoriented.</i> <input type="checkbox"/> YELLOW / PRIORITY 2 Serious Injury or illness. Evacuation may be DELAYED if necessary. <i>Ex: Significant trauma, unable to walk, 2° – 3° burns not more than 1-3 palm sizes.</i> <input type="checkbox"/> GREEN / PRIORITY 3 Minor Injury or illness. Non-Emergency transport <i>Ex: Sprains, strains, minor heat-related illness.</i>	
Nature of Injury or Illness & Mechanism of Injury		<i>Brief Summary of injury or illness (Ex: Unconscious, Struck by Falling Tree)</i>
Transport Request		<i>Air Ambulance / Short Haul / Hoist Ground Ambulance / Other</i>
Patient Location		<i>Descriptive Location & Lat. Long (WGS84)</i>
Incident Name		<i>Geographic Name + "Medical" (Ex: Trout Meadow Medical)</i>
On-Scene Incident Commander		<i>Name of on-scene IC of incident within an Incident (Ex: TFLD Jones)</i>
Patient Care		<i>Name of Care Provider (Ex: EMT Smith)</i>

3. INITIAL PATIENT ASSESSMENT: Complete this section for each patient as applicable (start with the most severe patient)

Patient Assessment: See IRPG Page 106

Treatment:

4. TRANSPORT PLAN:

Evacuation Location (if different): (Descriptive Location (drop point, intersection, etc.) or Lat. / Long.) Patient's ETA to Evacuation Location:

Helispot / Extraction Site Size and Hazards:

5. ADDITIONAL RESOURCES / EQUIPMENT NEEDS:

Example: Paramedic/EMT, Crews, Immobilization Devices, AED, Oxygen, Trauma Bag, IV/Fluid(s), Splints, Rope rescue, Wheeled litter, HAZMAT, Extrication

6. COMMUNICATIONS: Identify State Air/Ground EMS Frequencies and Hospital Contacts as applicable

Function	Channel Name/Number	Receive (RX)	Tone/NAC *	Transmit (TX)	Tone/NAC *
COMMAND					
AIR-TO-GRND					
TACTICAL					

7. CONTINGENCY: Considerations: If primary options fail, what actions can be implemented in conjunction with primary evacuation method? Be thinking ahead.

8. ADDITIONAL INFORMATION: Updates/Changes, etc.

REMEMBER: Confirm ETA's of resources ordered. Act according to your level of training. Be Alert. Keep Calm. Think Clearly. Act Decisively.