

# Ridge Creek

## Incident Action Plan

0600-2200

Thursday, August 10, 2023



Smokey turned 79 yesterday!

### ID-IPF-000447

P1QG9D (0104)



QR Code to download the IAP and maps  
<https://linktr.ee/2023ridgecreek>



INCIDENT OBJECTIVES	1. Incident Name <b>Ridge Creek Fire</b>	2. Date August 9, 2023	3. Time 1800
4. Operational Period: <b>Thursday, August 10, 2023 0600-2200</b>			
<p>5. General Control Objectives for the Incident</p> <ul style="list-style-type: none"> <li>• Provide for the protection of firefighter and public safety by implementing a course of action that achieves incident objectives while minimizing firefighter exposure, mitigating public safety issues, and is based on sound risk management principles</li> <li>• Protect infrastructure, private residences, private inholdings and businesses in the planning area from negative impacts by fire and mitigating smoke impacts when possible. This includes private inholdings and residences east of Hayden Lake and Hudlow Warming Hut</li> <li>• Minimize fire suppression impacts and fire effects of Hayden Creek and Hayden Lake and associated RHCA</li> <li>• Minimize fire impacts to timber values on private industrial timber lands and National Forest System lands. This includes Bottom Canyon and other planned timber sales and existing plantations</li> <li>• Minimize fire impacts to the Bonneville Power Administration Transmission lines north of the current fire area</li> <li>• Ensure active communications of fire status, planned management actions, and predicted fire behavior to Bonneville Power Administration so that the appropriate actions can be taken to manage the transmission lines</li> <li>• Use a deliberative risk management process that mitigates risk to firefighting resources and the public while pursuing a course of action to achieve incident objectives. Protection of human life is the highest priority on all actions. <ul style="list-style-type: none"> <li>○ Develop a population protection plan for private inholdings and residences east of Hayden Lake. Coordinate with Kootenai County Emergency Management.</li> <li>○ Coordinate with the Kootenai County Sheriff on emergency evacuation plans as needed</li> <li>○ Implement and maintain any road, trail, or area closures for public safety as needed</li> </ul> </li> <li>• Build and maintain a high degree of trust with our partners, cooperators, stakeholders, and forest visitors by providing accurate, timely and well distributed information sharing</li> <li>• In addition to incident specific objectives and requirements, follow direction in strategic objectives and requirements found in the Ridge Creek WFDSS decision.</li> </ul>			
<p>5b. Incident <b>Commander's Intent</b></p> <p>Prioritized values at risk are:</p> <ol style="list-style-type: none"> <li>1. Private property and residences</li> <li>2. Hayden Creek and Hayden Lake Water Quality</li> <li>3. Industrial timber lands and Bottom Canyon Timber Sales (Idaho Forest Group) and other planned timber sales</li> <li>4. Bonneville Power Administration Transmission Line</li> <li>5. Hudlow Warming Hut</li> <li>6. Plantations</li> </ol>			
6. Weather Forecast & General Safety Message for Period – <b>See Attached</b>			
7. Attachments (mark if attached)			
<input checked="" type="checkbox"/> <b>Organization List - ICS 203</b>	<input checked="" type="checkbox"/> <b>Weather Forecast</b>	<input checked="" type="checkbox"/> <b>Safety Message</b>	
<input checked="" type="checkbox"/> <b>Div. Assignment Lists - ICS 204</b>	<input checked="" type="checkbox"/> <b>Fire Behavior Forecast</b>	<input checked="" type="checkbox"/> <b>Medical Emergency Com Plan</b>	
<input checked="" type="checkbox"/> <b>Communications Plan - ICS 205</b>	<input checked="" type="checkbox"/> <b>Incident Map</b>	<input type="checkbox"/>	
<input checked="" type="checkbox"/> <b>Medical Plan - ICS 206</b>	<input checked="" type="checkbox"/> <b>Air Operations– ICS 220</b>	<input type="checkbox"/>	
9. Prepared by (Planning Section Chief) <b>Robbi Mecus – Deputy PSC</b>		9. Approved by (Incident Commander)	

## ORGANIZATION ASSIGNMENT LIST (ICS 203)

<b>1. Incident Name:</b>		<b>2. Operational Period: DAY</b>	
RIDGE CREEK		Date/Time From: 08/10/2023 0600 THU	Date/Time To: 08/10/2023 2200 THU
<b>3. Incident Commander(s) and Command Staff:</b>		<b>7. Operations Section:</b>	
IC/UC	STEVE MILLER CHRIS WOODS (T)	FIELD OPS	CORY HENRY BRIAN WOLVERT (T)
DEPUTY		PLANNING OPS	KEITH MURPHY DARREN BRIDGES (T)
SAFETY OFFICER	LEE OSTERLAND ; TERRY TRAPP KENT GLAZER (T)	STRATEGIC OPS	JOE ALYEA
INFORMATION OFFICER	CLARK MCCREEDY ; LARRY BICKEL ; BRIAN VANVICKLE KELLY MILLER (T) ; SUZ BOWERS- ZOSCHG (T)	STAGING AREA	
LIAISON OFFICER	RON ROBINSON ; CECILE STELTER	DIVISION/GROUP	A TODD WOOD JOSHUA STROHMEYER (T)
<b>4. Agency/Organization Representative(s):</b>		DIVISION/GROUP	K UNSTAFFED
<b>Agency/Organization</b>	<b>Name</b>	DIVISION/GROUP	Z CHRIS WHITE
USFS	RANDY SWICK HOLLY HAMPTON (T)	<b>7b. Air Operations Branch:</b>	
IDL	ANDREW SMYTH ERIK SJOQUIST	AIR OPS BRANCH DIRECTOR	JOHN FISH
RESOURCE ADVISORS	WILL YOUNG ; MATT SLIFKO CHRIS ROBINSON (T)	AIR ATTACK SUPERVISOR	
<b>5. Planning Section:</b>		AIR SUPPORT SUPERVISOR	
CHIEF	PETER FISCHER ; ROBBI MECUS AARON YOUNG (T)	HELICOPTER COORDINATOR	
SITUATION UNIT	BEN GARRETT THOMAS TARABELLI (T)	AIR TANKER COORDINATOR	
DOCUMENTATION UNIT		<b>8. Finance/Administration Section:</b>	
DEMOBILIZATION UNIT	GLEN PALMGREN	CHIEF	MARY COLEMAN PETER BERINGER (V)
FIRE BEHAVIOR ANALYST	BILL ANEY	DEPUTY	
INCIDENT METEOROLOGIST	SHANE EAGAN	TIME UNIT	CAROLE WEIKLE (T)
GIS SPECIALIST	JEFF SPROVKIN PETER ROSE	PROCUREMENT UNIT	
TECHNOLOGY SUPPORT SPECIALIST	JOHN COSTELLO MARK ERICKSON (T)	COMPENSATION UNIT	FARRAH SCALORA (V)
<b>6. Logistics Section:</b>		COST UNIT	JENNIFER GALLAGHER (V)
CHIEF	SCOTT CARRIGAN ; STEVE SCHUG		
DEPUTY			
SUPPLY UNIT	BRYAN GALLAGHER		
FACILITIES UNIT			
GROUND SUPPORT UNIT			
COMMUNICATIONS UNIT	ARNOLD IRVINE		
MEDICAL UNIT	ROBERT WHITE ; MIKE PASSARELLI ROBERT EGGERT (T)		
SECURITY UNIT			
FOOD UNIT	DEBBY BERDINE		
<b>9. Prepared By:</b>	<b>Name:</b> SUSAN THIEL		
ICS 203	IAP Page	<b>Date/Time:</b> 08/09/2023 1750	



# INCIDENT Weather Forecast



**Forecast No:** 1  
**Prediction For:** Thursday  
**Shift Date:** August 10, 2023  
**Forecast Issued:** August 09, 2023 at 1800

**Name of Incident:** Ridge Creek  
**Unit:** Idaho Panhandle NF  
**Incident Meteorologist:** Shane Eagan  
 (312) 804-2926

**Discussion:** Skies will clear throughout the day with gusty southwesterly winds this morning through the afternoon, particularly across higher ridges and where terrain/wind align. Expect a return to diurnal, terrain-driven winds overnight tonight along with drier overnight RH recoveries (~55-60%). Warmer and drier weather Friday as terrain driven flows become southwesterly as mixing/inversion breaks by late morning.

### Forecast for Today:

**Sky/Weather:**

Drier with clearing skies and gusty SW winds through the afternoon.

	<u>Ridge Creek ICP 2,400'</u>	<u>Ridge Creek 3,200'</u>	<u>Magee Peak 4,720'</u>	
<b>Max Temperature:</b>	79	74	67	°F
<b>Min RH:</b>	30-35	32-36	34-38	%
<b>Wind (20 FT):</b>	Expect a moderate morning inversion to break after 1000			
...	SW 13	SW 15	SW 13	mph
...	Gusts: 23	Gusts: 25	Gusts: 25	mph
<b>Mixing Height:</b>	7,500	7,000	6,500	ft AGL
<b>LAL:</b>	1	1	1	
<b>Chance of Precipitation:</b>	5	5	5	%
<b>Tonight's Min Temperature:</b>	48	50	53	°F
<b>Tonight's Max RH:</b>	75-80	62-68	50-55	%
<b>Tonight's Wind (20 FT):</b>	Expect the evening inversion to set in around 1900; drainage/downslope+downvalley flows overnight			
...	S 9	S 4	SW 3	mph
...	Gusts: 15	Gusts: 10	Gusts: 10	mph
<b>Tonight's Mixing Height:</b>	2,500	1,500	3,000	ft AGL
<b>Tonight's LAL:</b>	1	1	1	
<b>Tonight's Chnc of Precip:</b>	0	0	0	%

### Forecast for Friday:

**Sky/Weather:**

Warmer, dry, and mostly sunny.

	<u>Ridge Creek ICP 2,400'</u>	<u>Ridge Creek 3,200'</u>	<u>Magee Peak 4,720'</u>	
<b>Max / Min Temperature:</b>	83 50	78 53	72 56	°F
<b>Min / Max RH:</b>	30 75	31 65	32 50	%
<b>Wind (20 FT):</b>	Expect a moderate morning inversion to break around 1000; diurnal flows in sheltered areas			
...	SW 9	SW 9	SW 9	mph
...	Gusts: 15	Gusts: 15	Gusts: 18	mph
<b>Mixing Height:</b>	7,000	6,500	6,000	ft AGL
<b>Haines Index:</b>	5	<b>LAL:</b> 1	<b>Precip Chance:</b> 0	

### Extended Outlook:

Temperatures will continue to warm through the weekend into next week as dry air settles back into the region. Expect daytime minimum RHs ~20-30% with overnight recoveries around 45-65%, depending on elevation. Prevailing winds will be out of the southwest with terrain-driven flows.

	<u>Max T</u>	<u>Min T</u>	<u>Min RH</u>	<u>Max RH</u>	<u>Ridge Winds @ 1500</u>	<u>Weather</u>
<b>Ridge Creek 3,200'</b>	<b>Sat:</b> 80	55	30	65	W @ 11 G20	Mostly sunny, dry
	<b>Sun:</b> 86	59	27	60	W @ 8 G13	Mostly sunny, warmer, & dry
	<b>Mon:</b> 88	60	25	60	W @ 10 G18	Mostly sunny, warmer, & dry

Please text weather observations to IMET (312-804-2926) or email [shane.eagan@noaa.gov](mailto:shane.eagan@noaa.gov)

gov

## FIRE BEHAVIOR FORECAST

<b>FORECAST NUMBER:</b> 4	<b>INCIDENT TYPE:</b> Wildland Fire
<b>FIRE NAME:</b> Ridge Creek	<b>OPERATIONAL PERIOD:</b> 8/10/23
<b>DATE ISSUED:</b> 8/09/2023	<b>TIME ISSUED:</b> 1600
<b>UNIT:</b> ID-IPF-000447	<b>PREPARED BY:</b> W.C. (Bill) Aney FBAN <b>SIGNED:</b> /s/ William C. Aney

### INPUTS

**WEATHER SUMMARY:**

Gusty winds especially near ridgetops. Temp 73F, RH 30-35% winds SW 10-15 with gusts 20-25. Night time humidity recovery fair (50-60%) on ridges, good (70%) in valleys. More detail in fire weather forecast

**FUELS & FUEL MOISTURE:**

Most active fire growth has been in shrub/grass/litter models with scattered forest overstory (FM 122) especially on S and SW slopes. North slopes and heavier timber fuels (FM 165/161) supported much less active fire behavior, but expect plenty of smoldering ground fire to remain in these areas.

Expect little fire spread or active fire behavior after sundown, as temps drop, rh increases, and winds turn more diurnal (downslope/downvalley)

**Daytime: Fine dead fuel moisture 6-10%    Probability of ignition 54%    Spotting distance .5mi**

### OUTPUTS - FIRE BEHAVIOR

**South slopes and ridges:** as fine fuels dry during the day expect a bit more open flame and an increase in spread rates, but with short (<2ft) flame length – potentially more on sites most exposed to forecasted winds. Heavy fuels continue to consume with limited single tree and small group torching.

**North slopes, heavier canopy:** Smoldering to slowly spreading fire, continued consumption of heavier fuels.

Fuel Type	Rate of Spread	Flame length
Grass/shrub/scattered timber (GS2, 122)	8 ch/hr	1-2'
Timber Understory (TU1)	1 ch/hr	.6'

**AIR OPERATIONS:** Potential for a moderate inversion breaking by midmorning, and gusty winds mid-morning through the afternoon.

**SAFETY:** Large, long dead snags present a risk to ground crews long after fire passes through. When working in the black, keep looking up, communicate with coworkers and adjacent crews.

**\*\*Base all action on current and expected fire behavior\*\***

DIVISION ASSIGNMENT LIST			1. Branch		2. Division <b>A (Page 1 / 3)</b>	
3. Incident Name <b>RIDGE CREEK</b>			4. Operational Period Date: <b>08/10/2023</b> Time: <b>0600 - 2200</b>			
5. Operations Personnel						
Field Operations Section Chief		Cory Henry/Brian Wolvert (T)		Branch Director		
Planning Operations Section Chief		Keith Murphy/Darren Bridges (T)		Division Supervisor		<b>Todd Wood/Josh Strohmeier (T) 602-617-2017</b>
6. Resources Assigned this Period						
RO#	Strike Team/Task Force/ Resource Designator	Leader	# People	LWD	Drop Off PT./Time	Pick Up PT./Time
	TFLD IDL CREWS	Humbert	1		ICP/0600	ICP/2200
	T2IA IDLPF Alpha	Bouris	20		ICP/0600	ICP/2200
	T2IA IDLPF Brave	Lewis	20		ICP/0600	ICP/2200
	T2IA IDLPF Charlie	Farell	20	8/21	ICP/0600	ICP/2200
C-7	CR21 FIRESTORM WILDLAND FIRE NCC 7A	Norlie	20	8/21	ICP/0600	ICP/2200
C-16	CRW2 T2C214 ROCHA REFORESTATION	Cruz	20	8/15	ICP/0600	ICP/2200
E-28	ENG6 NDNDS E5275	Owens	3		ICP/0600	ICP/2200
E-11	ENG6 SGS North West LLC.	Warmuth	4	8/11	ICP/0600	ICP/2200
E-50	ENG6 SGS North West LLC.	Sherlock	2	8/22	ICP/0600	ICP/2200
E-51	ENG6 SGS North West LLC.	Sherlock	2	8/22	ICP/0600	ICP/2200
E-52	ENG6 Kevin Bowes	Funk	3	8/23	ICP/0600	ICP/2200
7. Control Operations: TASK -Continue to secure control line on South end of fire PURPOSE -Keep fire West of 406 END STATE -Stop easterly progression of the fire beyond 406 Road						
8. Special Instructions: Utilize field maps for drop points, safety zones, and potential helispots Ensure that comms are functional throughout the entire division. Stay hydrated. Local engines are also available for IA. Make sure escape routes and safety zones are identified and known.						
9. Division/Group Communication Summary						
Communications Summary						
Channel	Function	RX Frequency	RX Tone		TX Frequency	TX Tone
1 TAC 1	TAC	168.0500 N	110.9		168.0500 N	110.9
6 BLM MICA Primary	CMD 1	164.5250 N	NONE		163.0250 N	100.0
7 FS-Monument Secondary	CMD 2	169.9250 N	107.2		165.5625 N	131.8
12 Air to Ground Primary	A/G	167.1250 N	NONE		167.1250 N	NONE
13 AIR TO GROUND SECONDARY	A/G	166.6125 N	NONE		166.6125 N	NONE
16 Air Guard	AIRGUARD	168.6250 N	NONE		168.6250 N	110.9
Prepared by (Resource Unit Ldr(t)) <i>Matt Tonello</i>					Date 08/09/2023	Time 2030

DIVISION ASSIGNMENT LIST			1. Branch	2. Division <b>A (Page 2 / 3)</b>		
3. Incident Name <b>RIDGE CREEK</b>			4. Operational Period Date: <b>08/10/2023</b> Time: <b>0600 - 2200</b>			
5. Operations Personnel						
Field Operations Section Chief	Cory Henry/Brian Wolvert (T)		Branch Director			
Planning Operations Section Chief	Keith Murphy/Darren Bridges (T)		Division Supervisor		<b>Todd Wood/Josh Strohmeier (T) 602-617-2017</b>	
6. Resources Assigned this Period						
RO#	Strike Team/Task Force/ Resource Designator	Leader	# People	LWD	Drop Off PT./Time	Pick Up PT./Time
E-55	ENG6 Bakken Robert	Bakken	3	8/22	ICP/0600	ICP/2200
E-56	ENG6 Soukkala	Leffler	3	8/22	ICP/0600	ICP/2200
E-59	ENG6 Solomon Fire	Wing	3	8/22	ICP/0600	ICP/2200
E-3	WTS2 St. Florian	Martin	1	8/17	ICP/0600	ICP/2200
E-4	WTS2 Martin	Madden	2	8/20	ICP/0600	ICP/2200
E-5	DZR2 Table Rock Forestry 200177		6		ICP/0600	ICP/2200
E-8	EXC2 FOUSTS INC 35616	Neu	1	8/18	ICP/0600	ICP/2200
E-31	DZR2 Patrick Madden - S01069	Madden	2	8/20	icp/0600	icp/2200
E-32	EXC2 Altered Aspects, LLC - A85027	Hess	2	8/20	ICP/0600	ICP/2200
O-35	TFLD	Jerman	1	8/21	ICP/0600	ICP/2200
O-32	TFLD	Taylor	1	8/22	ICP/0600	ICP/2200
7. Control Operations: TASK -Continue to secure control line on South end of fire PURPOSE -Keep fire West of 406 END STATE -Stop easterly progression of the fire beyond 406 Road						
8. Special Instructions: Utilize field maps for drop points, safety zones, and potential helispots Ensure that comms are functional throughout the entire division. Stay hydrated. Local engines are also available for IA. Make sure escape routes and safety zones are identified and known.						
9. Division/Group Communication Summary						
Communications Summary						
Channel	Function	RX Frequency	RX Tone		TX Frequency	TX Tone
1 TAC 1	TAC	168.0500 N	110.9		168.0500 N	110.9
6 BLM MICA Primary	CMD 1	164.5250 N	NONE		163.0250 N	100.0
7 FS-Monument Secondary	CMD 2	169.9250 N	107.2		165.5625 N	131.8
12 Air to Ground Primary	A/G	167.1250 N	NONE		167.1250 N	NONE
13 AIR TO GROUND SECONDARY	A/G	166.6125 N	NONE		166.6125 N	NONE
16 Air Guard	AIRGUARD	168.6250 N	NONE		168.6250 N	110.9
Prepared by (Resource Unit Ldr(t)) <i>Matt Tonello</i>					Date 08/09/2023	Time 2030



DIVISION ASSIGNMENT LIST			1. Branch	2. Division <b>A (Page 3 / 3)</b>		
3. Incident Name <b>RIDGE CREEK</b>			4. Operational Period Date: <b>08/10/2023</b> Time: <b>0600 - 2200</b>			
5. Operations Personnel						
Field Operations Section Chief	Cory Henry/Brian Wolvert (T)		Branch Director			
Planning Operations Section Chief	Keith Murphy/Darren Bridges (T)		Division Supervisor		<b>Todd Wood/Josh Strohmeier (T) 602-617-2017</b>	
6. Resources Assigned this Period						
RO#	Strike Team/Task Force/ Resource Designator	Leader	# People	LWD	Drop Off PT./Time	Pick Up PT./Time
O-33	TFLD (t)	Hurrell	1	8/22	ICP/0600	ICP/2200
O-111	TFLD (t)	Primmer	1	8/22	ICP/0600	ICP/2200
	HEQB (t)	Vickers	1		ICP/0600	ICP/2200
O-98	FMOD Brothers Fire LLC.	Rosander	2	8/22	ICP/0600	ICP/2200
O-6.36	SOFR	Banaszak	1	8/19	ICP/0600	ICP/2200
O-20	EMTF	Wolfstitch	1	8/20	ICP/0600	ICP/2200
7. 7. Control Operations: TASK -Continue to secure control line on South end of fire PURPOSE -Keep fire West of 406 END STATE -Stop easterly progression of the fire beyond 406 Road						
8. Special Instructions: Utilize field maps for drop points, safety zones, and potential helispots Ensure that comms are functional throughout the entire division. Stay hydrated. Local engines are also available for IA. Make sure escape routes and safety zones are identified and known.						
9. Division/Group Communication Summary						
Communications Summary						
Channel	Function	RX Frequency	RX Tone		TX Frequency	TX Tone
1 TAC 1	TAC	168.0500 N	110.9		168.0500 N	110.9
6 BLM MICA Primary	CMD 1	164.5250 N	NONE		163.0250 N	100.0
7 FS-Monument Secondary	CMD 2	169.9250 N	107.2		165.5625 N	131.8
12 Air to Ground Primary	A/G	167.1250 N	NONE		167.1250 N	NONE
13 AIR TO GROUND SECONDARY	A/G	166.6125 N	NONE		166.6125 N	NONE
16 Air Guard	AIRGUARD	168.6250 N	NONE		168.6250 N	110.9
Prepared by (Resource Unit Ldr(t)) <i>Matt Tonello</i>					Date 08/09/2023	Time



DIVISION ASSIGNMENT LIST			1. Branch		2. Division <b>Z (Page 1 / 3)</b>	
3. Incident Name <b>RIDGE CREEK</b>			4. Operational Period Date: <b>08/10/2023</b> Time: <b>0600 - 2200</b>			
5. Operations Personnel						
Field Operations Section Chief		Cory Henry/Brian Wolvert (T)		Branch Director		
Planning Operations Section Chief		Keith Murphy/Darren Bridges (T)		Division Supervisor		<b>Chris White 541-517-6065</b>
6. Resources Assigned this Period						
RO#	Strike Team/Task Force/ Resource Designator	Leader	# People	LWD	Drop Off PT./Time	Pick Up PT./Time
C-5	CRW1 Klamath IHC	Owensbey	19	8/21	ICP/0600	ICP/2200
C-8	CRW1 Black Mountain IHC	Milligan	22	8/22	ICP/0600	ICP/2200
C-11	CR2I Miller Timber	Yashima	20	8/22	ICP/0600	ICP/2200
O-13	FMOD Newman	Harris	2	8/18	ICP/0600	ICP/2200
O-92	FMOD WHITE HORSE FORESTRY, INC.	Mehaffey	2	8/23	ICP/0600	ICP/2200
O-99	FMOD SWEDBERG CONTRACTING CORP.	Hileman	2	8/22	ICP/0600	ICP/2200
E-6	ENG6 NDND5 E5274	Mountain	4	8/19	ICP/0600	ICP/2200
E-9	WTT2 Sagle	Stuckey	2	8/18	ICP/0600	ICP/2200
E-1	DO22 Foust	Newcome	1	8/17	ICP/0600	ICP/2200
E-2	EXC2 Foust 35653	Kramer	1	8/17	ICP/0600	ICP/2200
E-7	GRD1 Foust L00652	Kramer	1	8/18	ICP/0600	ICP/2200
7. Control Operations: TASK -Continue preparing line on FSR 437 and 625 and on indirect line connecting FSR 625 and FSR 406 PURPOSE - Keep fire north of Hell's Canyon and east of the north fork of the Hayden to protect private residences and industrial land to the southwest END STATE - Stop southerly progression of fire beyond 206 Rd						
8. Special Instructions: Utilize field maps for drop points, safety zones, and potential helispots Ensure that comms are functional throughout the entire division. Stay hydrated. Be aware of heavy equipment operations on road.						
9. Division/Group Communication Summary						
Communications Summary						
Channel	Function	RX Frequency	RX Tone		TX Frequency	TX Tone
3 TAC 3	TAC	168.6000 N	110.9		168.6000 N	110.9
1 BLM MICA	COMMAND	164.5250 N	NONE		163.0250 N	100.0
7 FS-Monument Secondary	COMMAND	169.9250 N	107.2		165.5625 N	131.8
12 Air to Ground Primary	A/G	167.1250 N	NONE		167.1250 N	NONE
13 AIR TO GROUND SECONDARY	A/G	166.6125 N	NONE		166.6125 N	NONE
16 Air Guard	AIRGUARD	168.6250 N	NONE		168.6250 N	110.9
Prepared by (Resource Unit Ldr(t)) <i>Matt Tonello</i>					Date 08/9/2023	Time 1900

DIVISION ASSIGNMENT LIST				1. Branch	2. Division <b>Z (Page 2 / 3)</b>	
3. Incident Name <b>RIDGE CREEK</b>				4. Operational Period Date: <b>08/10/2023</b> Time: <b>0600 - 2200</b>		
5. Operations Personnel						
Field Operations Section Chief		Cory Henry/Brian Wolvert (T)		Branch Director		
Planning Operations Section Chief		Keith Murphy/Darren Bridges (T)		Division Supervisor		<b>Chris White 541-517-6065</b>
6. Resources Assigned this Period						
RO#	Strike Team/Task Force/ Resource Designator	Leader	# People	LWD	Drop Off PT./Time	Pick Up PT./Time
E-25	HETF AKRE LOGGING, LLC AKRE 1	Akre	7	8/20	ICP/0600	ICP/2200
E-27	HETF BONNALIE LOGGING LLC TASK FORCE 2	Bonnali	8	8/20	ICP/0600	ICP/2200
E-23	VUTV D1 CDA River - Gator					
O-66	TFLD	Schelin	1		ICP/0600	ICP/2200
O-37	TFLD(t)	Cobb	1		ICP/0600	ICP/2200
O-2	HEQB	Hijos	1	8/17	ICP/0600	ICP/2200
O-12	HEQB	Lechter	1	8/20	ICP/0600	ICP/2200
O-25	HEQB	Rexrode	1	8/22	ICP/0600	ICP/2200
	HEQB (t)	Schumacker	1		ICP/0600	ICP/2200
7. Control Operations: TASK -Continue preparing line on FSR 437 and 625 and on indirect line connecting FSR 625 and FSR 406 PURPOSE - Keep fire north of Hell's Canyon and east of the north fork of the Hayden to protect private residences and industrial land to the southwest END STATE - Stop southerly progression of fire beyond 206 Rd						
8. Special Instructions: Utilize field maps for drop points, safety zones, and potential helispots Ensure that comms are functional throughout the entire division. Stay hydrated. Be aware of heavy equipment operations on road.						
9. Division/Group Communication Summary						
Communications Summary						
Channel	Function	RX Frequency	RX Tone		TX Frequency	TX Tone
3 TAC 3	TAC	168.6000 N	110.9		168.6000 N	110.9
1 BLM MICA	COMMAND	164.5250 N	NONE		163.0250 N	100.0
7 FS-Monument Secondary	COMMAND	169.9250 N	107.2		165.5625 N	131.8
12 Air to Ground Primary	A/G	167.1250 N	NONE		167.1250 N	NONE
13 AIR TO GROUND SECONDARY	A/G	166.6125 N	NONE		166.6125 N	NONE
16 Air Guard	AIRGUARD	168.6250 N	NONE		168.6250 N	110.9
Prepared by (Resource Unit Ldr(t)) <i>Matt Tonello</i>					Date 08/9/2023	Time 1730

DIVISION ASSIGNMENT LIST			1. Branch	2. Division <b>Z (Page 3 / 3)</b>		
3. Incident Name <b>RIDGE CREEK</b>			4. Operational Period Date: <b>08/10/2023</b> Time: <b>0600 - 2200</b>			
5. Operations Personnel						
Field Operations Section Chief		Cory Henry/Brian Wolvert (T)		Branch Director		
Planning Operations Section Chief		Keith Murphy/Darren Bridges (T)		Division Supervisor		<b>Chris White 541-517-6065</b>
6. Resources Assigned this Period						
RO#	Strike Team/Task Force/ Resource Designator	Leader	# People	LWD	Drop Off PT./Time	Pick Up PT./Time
O-38	HEQB (t)	Hess	1	8/21	ICP/0600	ICP/2200
O-34	HEQB (t)	Harger	1	8/22	ICP/0600	ICP/2200
O-1.2	SOFR	Wurzauf	1	8/18	ICP/0600	ICP/2200
O-19	EMTF Wilderness Medics				ICP/0600	ICP/2200
E-30	AMB1 BOUNDARY AMB SERVICE UNIT 2	Rinella	2	8/20	ICP/0600	ICP/2200
7. Control Operations: TASK -Continue preparing line on FSR 437 and 625 and on indirect line connecting FSR 625 and FSR 406 PURPOSE - Keep fire north of Hell's Canyon and east of the north fork of the Hayden to protect private residences and industrial land to the southwest END STATE - Stop southerly progression of fire beyond 206 Rd						
8. Special Instructions: Utilize field maps for drop points, safety zones, and potential helispots Ensure that comms are functional throughout the entire division. Stay hydrated. Be aware of heavy equipment operations on road.						
9. Division/Group Communication Summary						
Communications Summary						
Channel	Function	RX Frequency	RX Tone	TX Frequency	TX Tone	
3 TAC 3	TAC	168.6000 N	110.9	168.6000 N	110.9	
1 BLM MICA	COMMAND	164.5250 N	NONE	163.0250 N	100.0	
7 FS-Monument Secondary	COMMAND	169.9250 N	107.2	165.5625 N	131.8	
12 Air to Ground Primary	A/G	167.1250 N	NONE	167.1250 N	NONE	
13 AIR TO GROUND SECONDARY	A/G	166.6125 N	NONE	166.6125 N	NONE	
16 Air Guard	AIRGUARD	168.6250 N	NONE	168.6250 N	110.9	
Prepared by (Resource Unit Ldr(t)) <i>Matt Tonello</i>				Date 08/9/2023	Time	

<b>AIR OPERATIONS SUMMARY 220</b>		Prepared By: John Fish		Prepared: 08/09/2023		Prepared Time: 1700 hrs.	
<b>INCIDENT NAME:</b> Ridge Creek Fire		<b>OPERATIONAL PERIOD</b> 8/10/23		<b>START TIME</b> 0900	<b>END TIME</b> 2000	<b>SUNRISE</b> 0536	<b>SUNSET</b> 2008

<b>REMARKS</b> - All aircraft orders thru Air Attack if on scene, otherwise thru AOBD (cell phone) - Large Electric Transmission Line through center of fire area	<b>MEDICAL RESPONSE AIRCRAFT</b> <b>* Follow Medical Plan ICS-206 *</b>	<b>TFR</b> <b>Ridge Creek 3/8181</b> 8,000 feet MSL. 0700 – 2100 Hours
---	--	---

PERSONNEL	NAME	PHONE #	FREQUENCIES	AM	FM	FIXED-WING Avail/ Type/ Make-Model/ N#/ Base
<b>AOBD</b>	John Fish	<b>850-843-0977</b>	<b>A/G PRI</b>		<b>167.1250</b>	<b>ATGS Platforms:</b> N76WA Call Sign – AA 104
<b>ASGS</b>			<b>A/G SEC</b>		<b>166.6125</b>	<b>F/W Bases:</b> Coeur d'Alene Airport (COE)
<b>ATGS</b> <b>ATGS(T)</b>	Matt Counts Sam Bullington	<b>406-270-7437</b> <b>406-547-4416</b>				<b>R/W Bases:</b> Coeur d'Alene Airport (COE) Sand Point
						<b>Air Tankers</b> <b>LATs – T105 &amp; T132</b> <b>SEATs – FB-205, FB-206, FB-217, FB-219</b>

**HELICOPTERS**

FAA N#	TY	MAKE/ MODEL	BASE	START AVAIL	REMARKS	FAA N#	TY	MAKE/ MODEL	BASE	START	AVAIL	REMARKS
<b>N258PJ</b>	1	CH-47D	COE	0800	0900							
<b>N214B</b>	1	B214	Sand Point	0800	0900							
<b>N214KA</b>	2	B212	COE	0800	0900							
<b>N28HX</b>	2	B205+	COE	0800	0900							
<b>N102RF</b>	3	AS350B2	COE	0800	0900							

**Ridge Creek Fire  
EA Silver Team Phone List**

<b>Position</b>	<b>Name</b>	<b>Cell</b>
<b>Incident Commander</b>	<b>Steve Miller</b>	<b>414-308-6861</b>
Deputy Incident Commander (trainee)	Chris Woods	573-315-8394
<b>Safety Officer</b>	<b>Lee Osterland</b>	<b>231-357-7381</b>
Safety Officer	Terry Trapp	715-610-3695
Safety Officer (trainee)	Kent Glazer	715-340-0891
Safety Officer Line	Tim Banaszak	715-412-0322
<b>Fire Information</b>	<b>FireNet</b>	<b>208-953-7022</b>
Public Information Officer	Clark McCreedy	989-292-9373
Public Information Officer	Brian VanVickle	815-994-8522
<b>Liaison Officer</b>	<b>Ron Robinson</b>	<b>612-860-1257</b>
Liaison Officer	Cecile Stelter	814-688-7133
<b>Operations Section Chief</b>	<b>Keith Murphy</b>	<b>906-250-1382</b>
Operations Section Chief	Cory Henry	906-280-4144
<b>Strategic Operations</b>	<b>Joe Alyea</b>	<b>509-671-1610</b>
Air Operations Branch Director	John Fish	850-843-0977
<b>Planning Section Chief</b>	<b>Robbi Mecus</b>	<b>518-524-6622</b>
Planning Section Chief	Peter Fischer	304-618-9083
Planning Section Chief (trainee)	Aaron Young	608-558-5844
<b>Logistics Section</b>	<b>General</b>	<b>208-891-6611</b>
<b>Medical Unit Leader</b>	<b>Robert White</b>	<b>715-415-2400</b>
Medical Unit Leader	Mike Passarelli	330-633-0547
Medical Unit Leader (trainee)	Robert Eggert	708-691-2313
<b>Communications Unit</b>	<b>Arnold Irvine</b>	<b>814-688-4236</b>
<b>Finance Section</b>	<b>FireNet</b>	<b>208-510-5158</b>

# INCIDENT RADIO COMMUNICATIONS PLAN (ICS 205)

## Controlled Unclassified Information//Basic

<b>1. Incident Name:</b>		<b>2. Date/Time Prepared:</b>		<b>3. Operational Period:</b>		<b>DAY SHIFT</b>	
Ridge Creek Fire		Date: 08/10/23	Date/Time From: 08/10/23 0600	Date/Time To: 08/10/23 2200			
		Time: 1100					

4. Basic Radio Channel Use:										
Zone Group	Ch #	Function	Channel Name	Assignment	RX Freq	RX Tone/NAC	TX Freq	TX Tone/NAC	Mode (A,D, or M)	Remarks
1	1	TACTICAL	TAC 1	DIV A	168.0500 N	110.9	168.0500 N	110.9	A	
1	2	TACTICAL	TAC 2	DIV K	168.2000 N	110.9	168.2000 N	110.9	A	Not Staffed
1	3	TACTICAL	TAC 3	DIV Z	168.6000 N	110.9	168.6000 N	110.9	A	
1	4	TACTICAL	TAC 4	Structure Group	166.7250 N	110.9	166.7250 N	110.9	A	Not Staffed
1	6	COMMAND	CMD 1	ALL DIVS	164.5250 N	NONE	163.0250 N	100.0	A	BLM MICA RPTR PRIMARY
1	7	COMMAND	CMD 2	ALL DIVS	169.9250 N	107.2	165.5625 N	131.8	A	F'S MONUMENT SECONDARY
1	12	TACTICAL	AIR TO GROUND PRIMARY	All Divs	167.1250 N	NONE	167.1250 N	NONE	A	A/G PRIMARY
1	13	TACTICAL	AIR TO GROUND SECONDARY	All Divs	166.6125 N	NONE	166.6125 N	NONE	A	A/G SECONDARY
1	14	EMS	EMS	EMS 2	155.2800 N	NONE	155.2800 N	156.7	A	EMS 2
1	16	AIR GUARD	AIRGUARD	ALL DIVS	168.6250 N	NONE	168.6250 N	110.9	A	EMERGENCY CALL TO AIRCRAFT

<b>5. Special Instructions:</b>	
<b>6. Prepared By</b>	
Communications Unit Leader	Name: : ARNIE IRVINE
<b>Signature:</b> /s/ Arnie Irvine	
<b>Date/Time</b> 8/9/23 1800	





# MEDICAL PLAN (ICS 206 WF)

Controlled Unclassified Information//Basic

7. Name & Location	Remote Camp Location(s)		
Z	Point of Contact:	Lisa Axel (612) 532-5181 EMT	Ambulance Frank (208) 715-5038
	EMS Responders & Capability:	EMT & ALS Ambulance	
	Equipment Available on Scene:	ALS	
	Medical Emergency Channel:		
	ETA for Ambulance to Scene:		
	Air:	40 min	
	Ground:	10 min to the Alpha/Zulu break	
	Approved Helispot:		
	Lat:	N47 49.300	
	Long:	116 39.650	
	Point of Contact:		
	EMS Responders & Capability:		
	Equipment Available on Scene:		
	Medical Emergency Channel:		
	ETA for Ambulance to Scene:		
	Air:		
	Ground:		
	Approved Helispot:		
	Lat:		
	Long:		
8. Prepared By (Medical Unit Leader)	9. Date/Time	10. Reviewed By (Safety Officer)	11. Date/Time
Mike Passarelli MEDL <i>Mike Passarelli MEDL</i>	8/9/23 1700	Lee Osterland <i>Lee Osterland</i>	8/9/23 1700

**Incident:**  
Ridge Creek Fire

**Date:**  
8/10/2023

**Shift:**  
Day



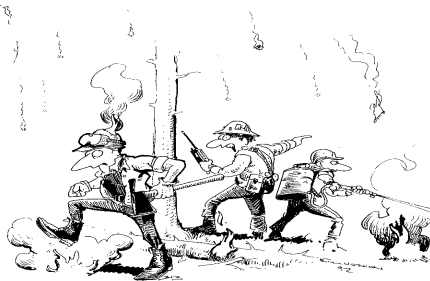
# **SAFETY MESSAGE** **SAFETY IS OUR FIRST PRIORITY**

*Fire fighter safety comes first on every fire, every time*



## **SAFETY THOUGHT**

See it; Say it; Fix it. We need to impress on everyone involved in this massive effort that they owe it to their crew, themselves, and those around them on the ground or in the air to be safe.



### **MAJOR HAZARDS AND RISKS**

- Aircraft Operations
- UTV Operations
- Lifting/Pulling Heavy Objects

- Fatigue
- Wildlife (Bears), Insects
- **Driving**

- Complacency
- Transporting loads of supplies
- **Communications**

### **\*\*Crew Safety Is Dependent Upon Competent And Confident Leadership\*\***

**-Every Incident Supervisor Has The Responsibility To Confirm That Safe Practices Are Known And Observed-**



### **Bear Safety Tips**

- Bears are food driven. If a bear obtains food from human's they will be back. A fed bear is a potential dead bear.
- Maintaining a clean camp/line is the single best mitigation for keeping bears out of your camp and off the fire line area you are working.

#### ***Safety Officer***

Lee Osterland SOFC, Terry Trapp SOF2, Ken Glazer SOF2)t)

#### ***Line Safety***

Tim Banaszak  
Doug Wurzauf

# RESOURCE ADVISOR MESSAGE

## Camp cleanliness

- Improves sanitation.
- Minimizes human wildlife conflict.
- Maintains good working relationships with partners.



## Archaeological Sites

- If found report to READ
- Leave artifacts in place
- If arch site cannot be avoided, use MIST tactics on page 96 of IRPG.

Assigned Resource Advisors on Incident:

Will Young (READ)

Matt Slifko (REAF)

Chris Robinson (REAF (t))



# Finance Message

Finance Phone # **(208) 510-5158** (Voice only. No Text)

Finance Email: [2023.ridgecreek.finance@firenet.gov](mailto:2023.ridgecreek.finance@firenet.gov)

SUBJECT: *Include Key Word* **TIME** for Overhead, Crews & Cooperators

SUBJECT: *Include Key Word* **EQUIPMENT** for Contract

## FINANCE CHECK IN:

[2023.ridgecreek.finance@firenet.gov](mailto:2023.ridgecreek.finance@firenet.gov)

PLEASE ENSURE THE BELOW DOCUMENTS ARE EMAILED

Overhead, Crews & Cooperator Resources	Contract Resources
<ul style="list-style-type: none"> <li>• <b>Check-In:</b> Crew Manifest, Cooperative Agreement (if applies), AD Hire Letter, Resource Order</li> <li>• <b>Daily:</b> Crew Time Report (CTR), Shift Tickets</li> </ul>	<ul style="list-style-type: none"> <li>• <b>Check-In:</b> Resource Order, Contract/VIPR Agreement (make sure you have your UEI, Pre-Inspection</li> <li>• <b>Daily:</b> Shift Tickets, receipts (fuel issues, claims, etc.)</li> </ul>

## REMINDERS

★ **WE WILL BE COMPLETELY DIGITAL ON THIS INCIDENT. IF YOU NEED ASSISTANCE, PLEASE CONTACT FINANCE AT (208) 510-5158 or [2023.ridgecreek.finance@firenet.gov](mailto:2023.ridgecreek.finance@firenet.gov)**

- ★ PLEASE MAKE SURE C OR E # IS ON THE CTR OR SHIFT TICKET
- ★ PLEASE SHOW YOUR LUNCH BREAK
- ★ PLEASE USE MILITARY TIME (0001-2400)
- ★ WHEN CLAIMING HAZARD PAY YOU MUST INCLUDE THE SUPPRESSION ACTION BEING PERFORMED. THIS INCLUDES OPERATIONS WHICH DIRECTLY SUPPORT CONTROL OF FIRE (E.G., ACTIVITIES TO EXTINGUISH THE FIRE, FIREFIGHTING, GROUND SCOUTING, SPOT FIRE PATROLLING, SEARCH AND RESCUE OPERATIONS, AND BACKFIRING).
- ★ WHEN SIGNING YOUR OF-288 or OF-286 PLEASE DO NOT LOCK IT or PROTECT THE SIGNATURE, WE HAVE TO BE ABLE TO SIGN IT AND SEND YOU A COPY

**For assistance with CLAIMS please call (208) 510-5158 or submit a request to the finance email inbox, subject comp/claims.**

# **CHECK-IN PROCEDURE**

- 1. Scan the QR code on the cover of the IAP and click the Check-in button**
  - If you have questions, visit Check-In in the Plans yurt at ICP and we can assist you with the virtual form**
- 2. Check in with Finance – see the Finance page**

# **DEMOB PROCEDURE**

**Visit Check-In in the Plans yurt at ICP. The Demob process is mostly in person (not virtual) at this time.**

**Any flight requests need to be provided to Resources/Check-In at least 72 hours before your anticipated demob time.**

# LOGISTICS SERVICE HOURS

BREAKFAST: 0530 - 0900

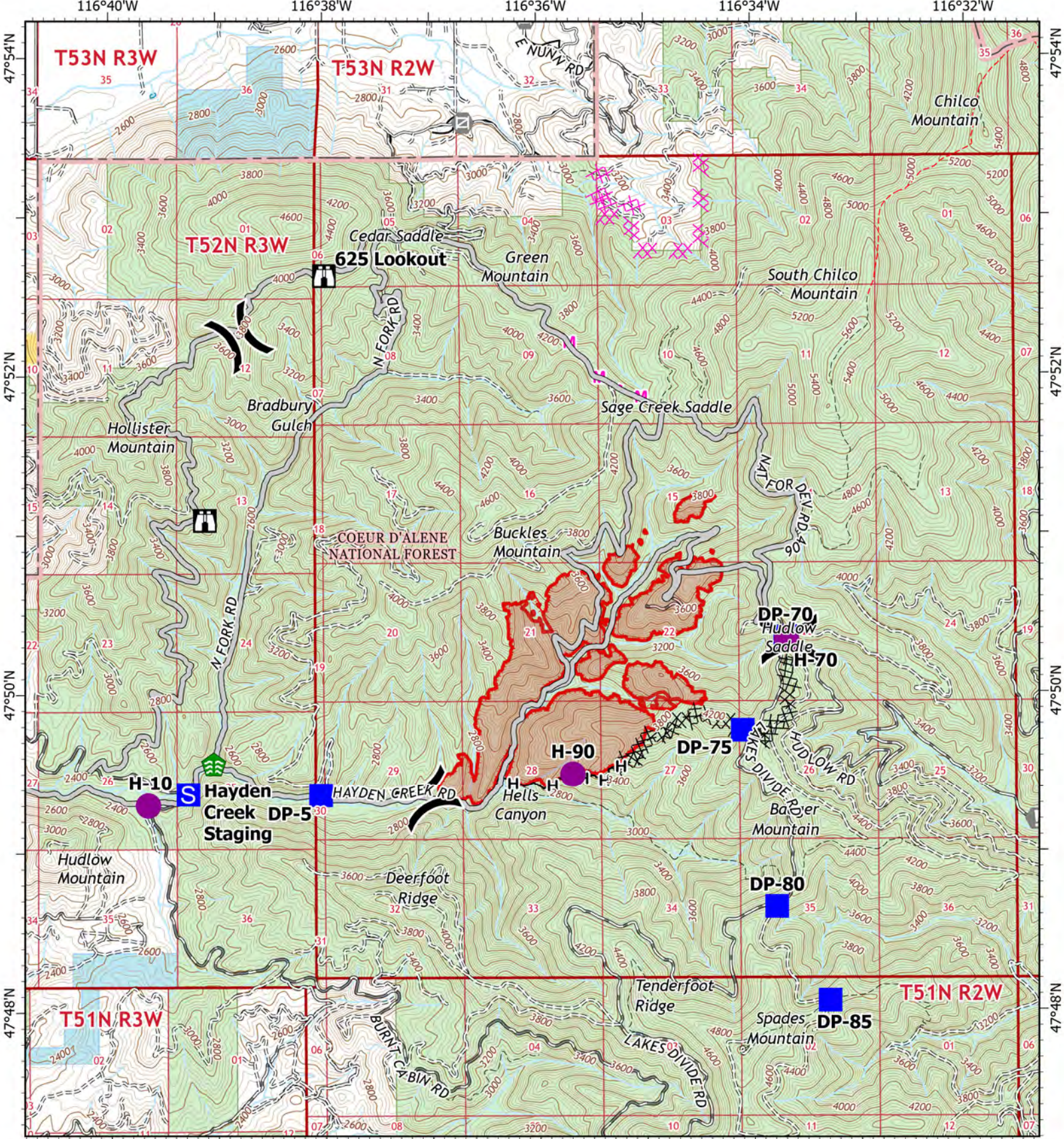
DINNER: 1700 - 2100

SHOWERS: 0500 – 2200

(CLOSED 1100 – 1300)

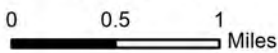
SUPPLY: 0600 - 2100

ORDERING: 07:00 – 20:00



**IAP**  
**RIDGE CREEK**  
**IDIPF000447**  
**08/10/2023 Day**

1,073 acres at 8/4/2023 @ 2109 PST  
 Acres from IR



- Helispot
- Stream Crossing
- ▭ Wildfire Daily Fire Perimeter
- Drop Point
- ▭ Bureau of Land Management (BLM)
- ▭ State
- ▭ US Forest Service (USFS)
- ▭ Private
- S Staging Area
- Completed Dozer Line
- Completed Hand Line
- Planned Dozer Line
- Planned Mixed Construction Line
- Access or Improved Road
- Uncontained
- ⌂ Lookout
- ⚠ Value at Risk
- ⚡ Gate





<b>UNIT LOG</b>	1. INCIDENT NAME	2. DATE PREPARED	3. TIME PREPARED
4. UNIT NAME/DESIGNATORS	5. UNIT LEADER (NAME AND POSITION)	6. OPERATIONAL PERIOD	
7. PERSONNEL ROSTER ASSIGNED			
NAME	ICS POSITION	TEAM/AGENCY	
<div style="display: flex; justify-content: space-between;"> <div style="width: 30%; border-right: 1px solid black;"></div> <div style="width: 35%; border-right: 1px solid black;"></div> <div style="width: 35%;"></div> </div>			
8. ACTIVITY LOG (CONTINUE ON REVERSE)			
TIME	MAJOR EVENTS		
<div style="display: flex; justify-content: space-between;"> <div style="width: 15%; border-right: 1px solid black;"></div> <div style="width: 85%;"></div> </div>			
<b>ICS 214</b> 3/98	9. PREPARED BY		

# MEDICAL PLAN (ICS 206a WF)

Controlled Unclassified Information//Basic

## Medical Incident Report

**FOR A NON-EMERGENCY INCIDENT, WORK THROUGH CHAIN OF COMMAND TO REPORT AND TRANSPORT INJURED PERSONNEL AS NECESSARY.**

**FOR A MEDICAL EMERGENCY: IDENTIFY ON SCENE INCIDENT COMMANDER BY NAME AND POSITION AND ANNOUNCE "MEDICAL EMERGENCY" TO INITIATE RESPONSE FROM IMT COMMUNICATIONS/DISPATCH.**

**Use the following items to communicate situation to communications / dispatch.**

**1. CONTACT COMMUNICATIONS / DISPATCH** (Verify correct frequency prior to starting report)

*Ex: "Communications, Div. Alpha. Stand-by for Emergency Traffic."*

**2. INCIDENT STATUS:** Provide incident summary (including number of patients) and command structure.

*Ex: "Communications, I have a Red priority patient, unconscious, struck by a falling tree. Requesting air ambulance to Forest Road 1 at (Lat./Long.) This will be the Trout Meadow Medical, IC is TFLD Jones. EMT Smith is providing medical care."*

Severity of Emergency / Transport Priority	<input type="checkbox"/> <b>RED / PRIORITY 1 Life or limb threatening injury or illness. Evacuation need is IMMEDIATE</b> <i>Ex: Unconscious, difficulty breathing, bleeding severely, 2° – 3° burns more than 4 palm sizes, heat stroke, disoriented.</i> <input type="checkbox"/> <b>YELLOW / PRIORITY 2 Serious Injury or illness. Evacuation may be DELAYED if necessary.</b> <i>Ex: Significant trauma, unable to walk, 2° – 3° burns not more than 1-3 palm sizes.</i> <input type="checkbox"/> <b>GREEN / PRIORITY 3 Minor Injury or illness. Non-Emergency transport</b> <i>Ex: Sprains, strains, minor heat-related illness.</i>	
Nature of Injury or Illness & Mechanism of Injury		Brief Summary of injury or illness <i>(Ex: Unconscious, Struck by Falling Tree)</i>
Transport Request		Air Ambulance / Short Haul / Hoist Ground Ambulance / Other
Patient Location		Descriptive Location & Lat. Long (WGS84)
Incident Name		Geographic Name + "Medical" <i>(Ex: Trout Meadow Medical)</i>
On-Scene Incident Commander		Name of on-scene IC of incident within an Incident <i>(Ex: TFLD Jones)</i>
Patient Care		Name of Care Provider <i>(Ex: EMT Smith)</i>

**3. INITIAL PATIENT ASSESSMENT:** Complete this section for each patient as applicable (start with the most severe patient)

Patient Assessment: See IRPG Page 106

Treatment:

**4. TRANSPORT PLAN:**

Evacuation Location (if different): (Descriptive Location (drop point, intersection, etc.) or Lat. / Long.) Patient's ETA to Evacuation Location:

Helispot / Extraction Site Size and Hazards:

**5. ADDITIONAL RESOURCES / EQUIPMENT NEEDS:**

*Example: Paramedic/EMT, Crews, Immobilization Devices, AED, Oxygen, Trauma Bag, IV/Fluid(s), Splints, Rope rescue, Wheeled litter, HAZMAT, Extrication*

**6. COMMUNICATIONS: Identify State Air/Ground EMS Frequencies and Hospital Contacts as applicable**

Function	Channel Name/Number	Receive (RX)	Tone/NAC *	Transmit (TX)	Tone/NAC *
COMMAND					
AIR-TO-GRND					
TACTICAL					

**7. CONTINGENCY:** Considerations: If primary options fail, what actions can be implemented in conjunction with primary evacuation method? Be thinking ahead.

**8. ADDITIONAL INFORMATION:** Updates/Changes, etc.

**REMEMBER:** Confirm ETA's of resources ordered. Act according to your level of training. Be Alert. Keep Calm. Think Clearly. Act Decisively.