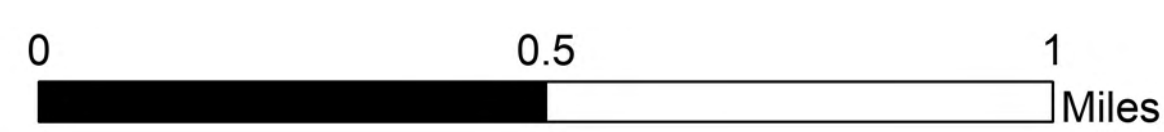


OPERATIONS

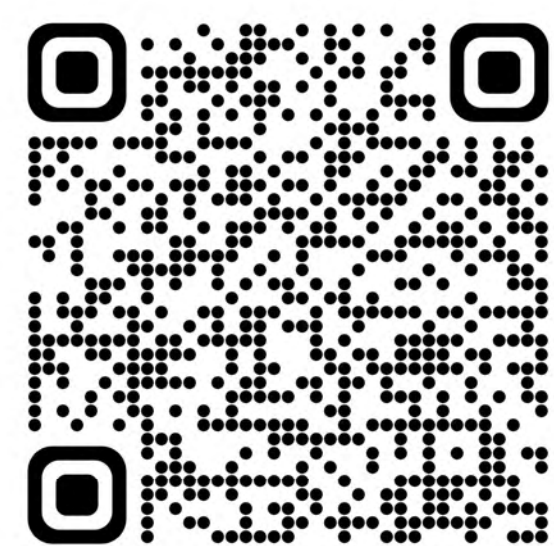
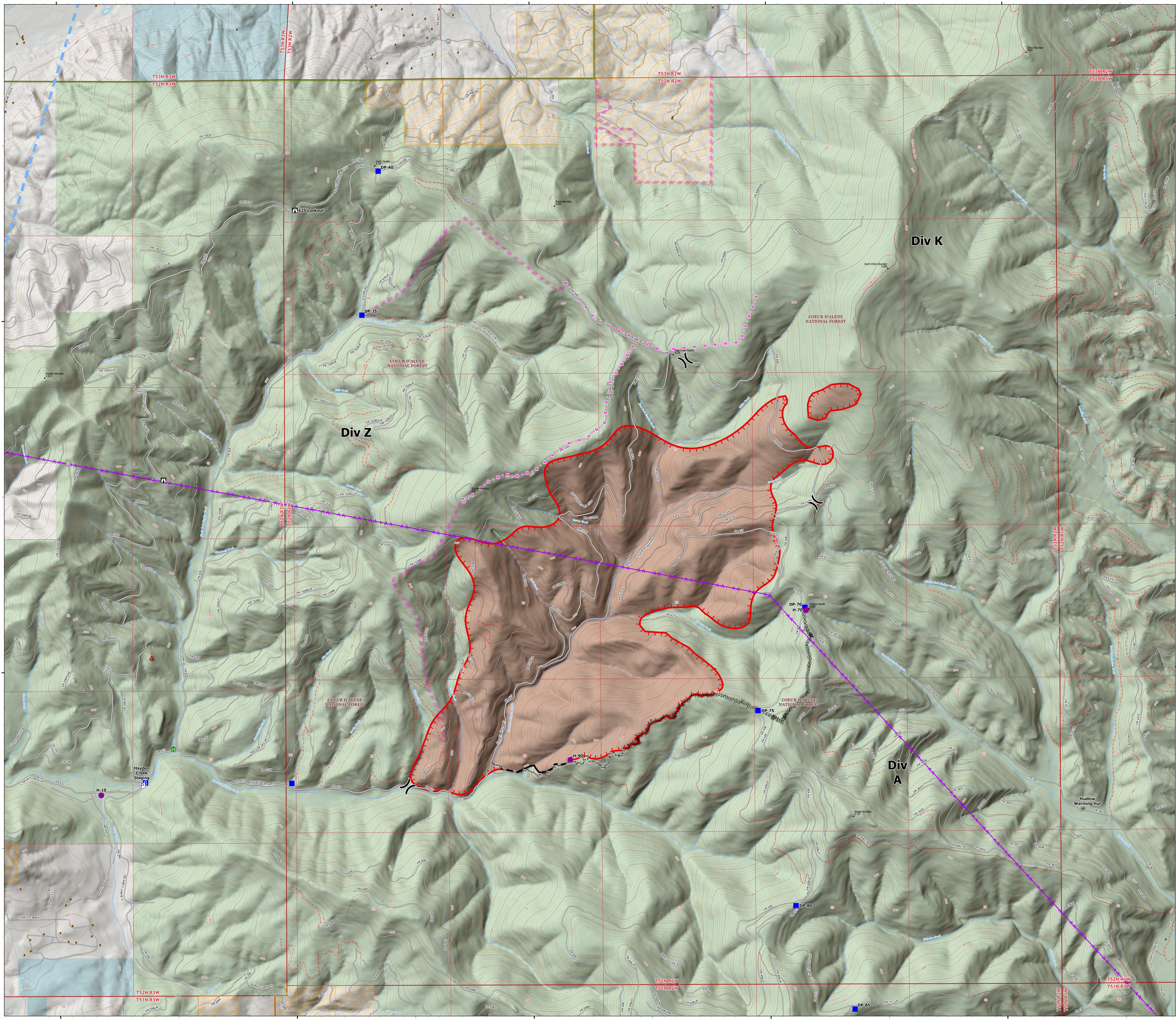
RIDGE CREEK
IDIPF000447

08/10/2023 Day

2,308 acres at 8/10/2023 @ 1200 hrs
GPS Flown



- Structures
- Helispot
- Division Break
- Drop Point
- Staging Area
- Lookout
- Value at Risk
- Gate
- Stream Crossing
- Pump
- Completed Dozer Line
- Completed Hand Line
- Planned Dozer Line
- Planned Mixed Construction Line
- Access or Improved Road
- Aerial Hazard
- Temporary Flight Restriction
- Contained
- Uncontained
- Wildfire Daily Fire Perimeter
- Timber Company Lands
- Trail
- Roads**
Route Status
 - DE - DECOMMISSIONED
 - EX - EXISTING
- Land Management**
 - State
 - US Forest Service (USFS)



EA Team Silve
08/10/2023 1338
North American 1983 Datum, Lat/Long Grid