

Ridge Creek

Incident Action Plan

0600-2200

Friday, August 11, 2023

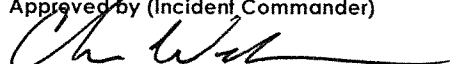


ID-IPF-000447


P1QG9D (0104)



QR Code to download the IAP and maps
<https://linktr.ee/2023ridgecreek>

INCIDENT OBJECTIVES	1. Incident Name Ridge Creek Fire	2. Date August 10, 2023	3. Time 1800
4. Operational Period: Friday, August 11, 2023 0600-2200			
5. General Control Objectives for the Incident <ul style="list-style-type: none"> • Provide for the protection of firefighter and public safety by implementing a course of action that achieves incident objectives while minimizing firefighter exposure, mitigating public safety issues, and is based on sound risk management principles • Protect infrastructure, private residences, private inholdings and businesses in the planning area from negative impacts by fire and mitigating smoke impacts when possible. This includes private inholdings and residences east of Hayden Lake and Hudlow Warming Hut • Minimize fire suppression impacts and fire effects of Hayden Creek and Hayden Lake and associated RHCA • Minimize fire impacts to timber values on private industrial timber lands and National Forest System lands. This includes Bottom Canyon and other planned timber sales and existing plantations • Minimize fire impacts to the Bonneville Power Administration Transmission lines north of the current fire area • Ensure active communications of fire status, planned management actions, and predicted fire behavior to Bonneville Power Administration so that the appropriate actions can be taken to manage the transmission lines • Use a deliberative risk management process that mitigates risk to firefighting resources and the public while pursuing a course of action to achieve incident objectives. Protection of human life is the highest priority on all actions. <ul style="list-style-type: none"> ○ Develop a population protection plan for private inholdings and residences east of Hayden Lake. Coordinate with Kootenai County Emergency Management. ○ Coordinate with the Kootenai County Sheriff on emergency evacuation plans as needed ○ Implement and maintain any road, trail, or area closures for public safety as needed • Build and maintain a high degree of trust with our partners, cooperators, stakeholders, and forest visitors by providing accurate, timely and well distributed information sharing • In addition to incident specific objectives and requirements, follow direction in strategic objectives and requirements found in the Ridge Creek WFDSS decision. 			
5b. Incident Commander's Intent Prioritized values at risk are: <ol style="list-style-type: none"> 1. Private property and residences 2. Hayden Creek and Hayden Lake Water Quality 3. Industrial timber lands and Bottom Canyon Timber Sales (Idaho Forest Group) and other planned timber sales 4. Bonneville Power Administration Transmission Line 5. Hudlow Warming Hut 6. Plantations 			
6. Weather Forecast & General Safety Message for Period – See Attached			
7. Attachments (mark if attached)			
<input checked="" type="checkbox"/> Organization List - ICS 203	<input checked="" type="checkbox"/> Weather Forecast	<input checked="" type="checkbox"/> Safety Message	
<input checked="" type="checkbox"/> Div. Assignment Lists - ICS 204	<input checked="" type="checkbox"/> Fire Behavior Forecast	<input checked="" type="checkbox"/> Medical Emergency Com Plan	
<input checked="" type="checkbox"/> Communications Plan - ICS 205	<input checked="" type="checkbox"/> Incident Map	<input type="checkbox"/>	
<input checked="" type="checkbox"/> Medical Plan - ICS 206	<input checked="" type="checkbox"/> Air Operations– ICS 220	<input type="checkbox"/>	
9. Prepared by (Planning Section Chief) Robbi Mecus – Deputy PSC	9. Approved by (Incident Commander) 		

ORGANIZATION ASSIGNMENT LIST (ICS 203)

1. Incident Name:		2. Operational Period: DAY	
RIDGE CREEK		Date/Time From: 08/11/2023 0600	Date/Time To: 08/11/2023 2200
		FRI	FRI
3. Incident Commander(s) and Command Staff:		FOOD UNIT	DEBBY BERDINE
IC/UC	STEVE MILLER CHRIS WOODS (T)	7. Operations Section:	
DEPUTY		FIELD OPS	CORY HENRY BRIAN WOLVERT (T)
SAFETY OFFICER	LEE OSTERLAND ; TERRY TRAPP KENT GLAZER (T)	PLANNING OPS	KEITH MURPHY DARREN BRIDGES (T)
INFORMATION OFFICER	CLARK MCCREEDY ; LARRY BICKEL ; BRIAN VANVICKLE	STRATEGIC OPS	JOE ALYEA
LIAISON OFFICER	RON ROBINSON ; CECILE STELTER	STAGING AREA	
4. Agency/Organization Representative(s):			
Agency/Organization	Name	DIVISION/GROUP	A
USFS	RANDY SWICK HOLLY HAMPTON (T)	DIVISION/GROUP	K
IDL	ANDREW SMYTH ERIK SJOQUIST	DIVISION/GROUP	Z
RESOURCE ADVISORS	WILL YOUNG ; MATT SLIFKO CHRIS ROBINSON (T)	DIVISION/GROUP	STRUCTURE
		DIVISION/GROUP	CONTINGENCY
			TODD WOOD JOSHUA STROHMEYER (T)
			CARTWRIGHT
			CHRIS WHITE
			STEVE THIME
			RUFUS DAVIS JR
5. Planning Section:		7b. Air Operations Branch:	
CHIEF	PETER FISCHER ; ROBBI MECUS AARON YOUNG (T)	AIR OPS BRANCH DIRECTOR	JOHN FISH
SITUATION UNIT	BEN GARRETT THOMAS TARABELLI (T)	AIR ATTACK SUPERVISOR	
DOCUMENTATION UNIT		AIR SUPPORT SUPERVISOR	
DEMOBILIZATION UNIT	GLENN PALMGREN	HELICOPTER COORDINATOR	
FIRE BEHAVIOR ANALYST	BILL ANEY	AIR TANKER COORDINATOR	
INCIDENT METEOROLOGIST	SHANE EAGAN	8. Finance/Administration Section:	
GIS SPECIALIST	JEFF SPROVKIN PETER ROSE	CHIEF	MARY COLEMAN PETER BERINGER (V)
RESOURCES UNIT	SUSAN THIEL BARRY REID (T), MATTHEW TONELLO (T)	DEPUTY	
TECHNOLOGY SUPPORT SPECIALIST	JOHN COSTELLO MARK ERICKSON (T)	TIME UNIT	CAROLE WEIKLE (T)
6. Logistics Section:		PROCUREMENT UNIT	
CHIEF	SCOTT CARRIGAN ; STEVE SCHUG	COMPENSATION UNIT	FARRAH SCALORA (V)
SUPPLY UNIT	BRYAN GALLAGHER	COST UNIT	JENNIFER GALLAGHER (V)
FACILITIES UNIT	MARIA TORRES		
GROUND SUPPORT UNIT	WILLARD STANLEY JR.		
COMMUNICATIONS UNIT	ARNOLD IRVINE		
MEDICAL UNIT	ROBERT WHITE ; MIKE PASSARELLI ROBERT EGGERT (T)		
ORDERING MGR	LAURIE MEADOWS		
SECURITY UNIT	WARMERDAM, MARK		
9. Prepared By:	Name: SUSAN THIEL	Position/Title: RESL	Signature:
ICS 203	IAP Page	Date/Time: 08/10/2023 1224	



INCIDENT Weather Forecast



Forecast No: 2
Prediction For: Friday
Shift Date: August 11, 2023
Forecast Issued: August 10, 2023 at 1800

Name of Incident: Ridge Creek
Unit: Idaho Panhandle NF
Incident Meteorologist: Shane Eagan
 (312) 804-2926

Discussion: Sunny skies with continued warming and drying today. Winds will be lighter than previous days, with terrain/diurnal winds giving way to southwesterly winds as the inversion breaks. Despite the lessened general winds, heads up for terrain-driven variability/enhancement, particularly on exposed and unsheltered south and west facing slopes.

Forecast for Today:

Sky/Weather:

Warmer, dry, and sunny.

	<u>Ridge Creek ICP 2,400'</u>	<u>Ridge Creek 3,400'</u>	<u>Buckles Mtn 4,200'</u>	
Max Temperature:	83	74	71	°F
Min RH:	26-30	30-34	32-36	%
Wind (20 FT):	Expect a moderate morning inversion to break after 1000			
...	SW 10	SW 9	SW 9	mph
...	Gusts: 18	Gusts: 15	Gusts: 15	mph
Mixing Height:	7,000	6,500	6,500	ft AGL
LAL:	1	1	1	
Chance of Precipitation:	0	0	0	%
Tonight's Min Temperature:	51	55	57	°F
Tonight's Max RH:	75-80	58-62	53-60	%
Tonight's Wind (20 FT):	Expect the evening inversion to set in around 1900; drainage/downslope+downvalley flows overnight			
...	S 9	S 3	S 3	mph
...	Gusts: 15	Gusts: 8	Gusts: 8	mph
Tonight's Mixing Height:	2,000	1,500	2,000	ft AGL
Tonight's LAL:	1	1	1	
Tonight's Chnc of Precip:	0	0	0	%

Forecast for Saturday:

Sky/Weather:

Warmer, continued dry, and partly cloudy.

	<u>Ridge Creek ICP 2,400'</u>	<u>Ridge Creek 3,400'</u>	<u>Buckles Mtn 4,200'</u>	
Max / Min Temperature:	84 52	76 57	72 59	°F
Min / Max RH:	28 75	32 58	33 50	%
Wind (20 FT):	Expect a moderate morning inversion to break around 1000; diurnal flows in sheltered areas			
...	W 9	WSW 9	W 9	mph
...	Gusts: 15	Gusts: 15	Gusts: 15	mph
Mixing Height:	8,000	8,000	8,000	ft AGL
Haines Index:	3	LAL: 1	Precip Chance: 0	

Extended Outlook: Gradual warming and drying trend continues into next week. Likely 90F+ at ICP Sun-Wed, if not longer. Drier overnight RH recoveries (less than 55%), especially at mid-slope and ridges.

		<u>Max T</u>	<u>Min T</u>	<u>Min RH</u>	<u>Max RH</u>	<u>Ridge Winds @ 1500</u>	<u>Weather</u>
Ridge Creek 3,400'	Sun:	80	59	28	55	WNW @ 7 G13	Mostly sunny, dry
	Mon:	84	63	26	55	W @ 8 G13	Mostly sunny, dry, warm
	Tue:	86	65	23	50	W @ 9 G18	Mostly sunny, warmer, & dry

Please text weather observations to IMET (312-804-2926) or email shane.eagan@noaa.gov

FIRE BEHAVIOR FORECAST																					
FORECAST NUMBER: 5	INCIDENT TYPE: Wildland Fire																				
FIRE NAME: Ridge Creek	OPERATIONAL PERIOD: 8/11/23																				
DATE ISSUED: 8/10/2023	TIME ISSUED: 1600																				
UNIT: ID-IPF-000447	PREPARED BY: W.C. (Bill) Aney FBAN SIGNED: /s/ William C. Aney																				
INPUTS																					
<p>WEATHER SUMMARY: Calmer wind than yesterday with similar temps and humidity. Nighttime humidity recovery fair (50-60%) on ridges, good (70%) in valleys. More detail in fire weather forecast</p>																					
<p>FUELS & FUEL MOISTURE: Fuels are rapidly drying out after the .2-.3" of rain two days ago, but so far fire behavior has been modest. The south and west facing open/scattered timber slopes should start to show more fire growth potential first but expect ground fire with single tree and small group torching possible. North slopes and heavier timber fuels (FM TU1) will be slower to recover but expect plenty of smoldering ground fire to remain in these areas. Expect little fire spread or active fire behavior after sundown, as temps drop, rh increases, and winds turn more diurnal (downslope/downvalley)</p> <p>Daytime: Fine dead fuel moisture 6-9% Spotting distance .2-.5mi</p>																					
OUTPUTS - FIRE BEHAVIOR																					
<p>South slopes and ridges: as fine fuels dry during the day expect a bit more open flame and an increase in spread rates, but with short (<2ft) flame length – potentially more active on sites most exposed to forecasted winds. Heavy fuels continue to consume with limited single tree and small group torching.</p> <p>North slopes, heavier canopy: Smoldering to slowly spreading fire, continued consumption of heavier fuels.</p>																					
<table border="1" style="width: 100%; border-collapse: collapse;"> <thead> <tr> <th style="width: 50%;">Fuel Type</th> <th style="width: 15%;">Rate of Spread</th> <th style="width: 15%;">Flame length</th> <th style="width: 10%;">Prob Ignition</th> </tr> </thead> <tbody> <tr> <td>Grass/shrub/scattered timber (GS2, 122)</td> <td style="text-align: center;">9 ch/hr</td> <td style="text-align: center;">1-2'</td> <td style="text-align: center;">55%</td> </tr> <tr> <td>Timber Understory (TU1)</td> <td style="text-align: center;">1 ch/hr</td> <td style="text-align: center;">.6'</td> <td style="text-align: center;">33%</td> </tr> <tr> <td> </td> <td> </td> <td> </td> <td> </td> </tr> <tr> <td> </td> <td> </td> <td> </td> <td> </td> </tr> </tbody> </table>		Fuel Type	Rate of Spread	Flame length	Prob Ignition	Grass/shrub/scattered timber (GS2, 122)	9 ch/hr	1-2'	55%	Timber Understory (TU1)	1 ch/hr	.6'	33%								
Fuel Type	Rate of Spread	Flame length	Prob Ignition																		
Grass/shrub/scattered timber (GS2, 122)	9 ch/hr	1-2'	55%																		
Timber Understory (TU1)	1 ch/hr	.6'	33%																		
<p>AIR OPERATIONS: Potential for a moderate inversion breaking by midmorning. Less gusty winds than yesterday.</p>																					
<p>SAFETY: Fight complacency and continue to bring your A game...conditions are warming and drying, and will continue to do so for the foreseeable future, so what you see today could well be different from what you saw yesterday or the day before.</p>																					

Base all action on current and expected fire behavior

DIVISION ASSIGNMENT LIST			1. Branch		2. Division A (Page 1 / 3)	
3. Incident Name RIDGE CREEK			4. Operational Period Date: 08/11/2023 Time: 0600 - 2200			
5. Operations Personnel						
Field Operations Section Chief		Cory Henry/Brian Wolvert (T)		Branch Director		
Planning Operations Section Chief		Keith Murphy/Darren Bridges (T)		Division Supervisor		Todd Wood/Josh Strohmeier (T) 602-617-2017
6. Resources Assigned this Period						
RO#	Strike Team/Task Force/ Resource Designator	Leader	# People	LWD	Drop Off PT./Time	Pick Up PT./Time
C-7	CR2I FIRESTORM WILDLAND FIRE NCC 7A	Norlie	20	8/21	ICP/0600	ICP/2200
C-16	CRW2 T2C214 ROCHA REFORESTATION	Cruz	20	8/15	ICP/0600	ICP/2200
E-28	ENG4 IDIPF E432	Owens	3		ICP/0600	ICP/2200
E-11	ENG6 NDND5 E275	Warmuth	4	8/11	ICP/0600	ICP/2200
E-50	ENG6 SGS North West LLC.	Sherlock	2	8/22	ICP/0600	ICP/2200
E-51	ENG6 SGS North West LLC.	Sherlock	2	8/22	ICP/0600	ICP/2200
E-52	ENG6 Funk Fire	Funk	3	8/23	ICP/0600	ICP/2200
E-54	ENG6 Castle Mountain D83273	Tsosie	3	8/22	ICP/0600	ICP/2200
E-55	ENG6 Bakken Robert	Bakken	3	8/22	ICP/0600	ICP/2200
E-56	ENG6 Flathead Fire	Leffler	3	8/22	ICP/0600	ICP/2200
E-57	ENG6 Castle Mountain C19623	Cork	3	8/23	ICP/0600	ICP/2200
7. Control Operations: TASK - Continue to secure control line on south end of fire PURPOSE - Keep fire west of 406 END STATE - Stop easterly progression of the fire beyond 406 Road						
8. Special Instructions: Utilize field maps for drop points, safety zones, and potential helispots Ensure that comms are functional throughout the entire division Stay hydrated Local engines are also available for initial attack Make sure escape routes and safety zones are identified and known						
9. Division/Group Communication Summary						
Communications Summary						
Channel	Function	RX Frequency	RX Tone		TX Frequency	TX Tone
1 TAC 1	TAC	168.0500 N	110.9		168.0500 N	110.9
6 MICA BLM Primary	CMD	164.5250 N	NONE		163.0250 N	100.0
7 Monument FS Secondary	CMD	169.9250 N	107.2		165.5625 N	131.8
8 Cedar Peak	CMD	170.9750 N	110.9		168.7000 N	110.9
12 Air to Ground Primary	A/G	167.1250 N	NONE		167.1250 N	NONE
13 AIR TO GROUND SECONDARY	A/G	166.6125 N	NONE		166.6125 N	NONE
16 Air Guard	AIRGUARD	168.6250 N	NONE		168.6250 N	110.9
Prepared by (Resource Unit Ldr(t)) <i>Matt Tonello</i>				Date 08/10/2023	Time 2030	

DIVISION ASSIGNMENT LIST			1. Branch		2. Division A (Page 2 / 3)	
3. Incident Name RIDGE CREEK			4. Operational Period Date: 08/11/2023 Time: 0600 - 2200			
5. Operations Personnel						
Field Operations Section Chief		Cory Henry/Brian Wolvert (T)		Branch Director		
Planning Operations Section Chief		Keith Murphy/Darren Bridges (T)		Division Supervisor		Todd Wood/Josh Strohmeyer (T) 602-617-2017
6. Resources Assigned this Period						
RO#	Strike Team/Task Force/ Resource Designator	Leader	# People	LWD	Drop Off PT./Time	Pick Up PT./Time
E-58	ENG6 Starkcorp B40745	Hawley	3	8/23	ICP/0600	ICP/2200
E-59	ENG6 Solomon Fire	Wing	3	8/22	ICP/0600	ICP/2200
E-3	WTS2 St. Florian	Martin	1	8/17	ICP/0600	ICP/2200
E-4	WTS2 Martin	Madden	2	8/20	ICP/0600	ICP/2200
E-5	DZR2 Table Rock Forestry 200177		6	8/19	ICP/0600	ICP/2200
E-8	EXC2 FOUSTS INC 35616	Neu	1	8/18	ICP/0600	ICP/2200
E-31	DZR2 Patrick Madden - S01069	Madden	2	8/20	icp/0600	icp/2200
E-32	EXC2 Altered Aspects, LLC - A85027	Hess	2	8/20	ICP/0600	ICP/2200
O-32	TFLD	Taylor	1	8/22	ICP/0600	ICP/2200
O-33	TFLD(t)	Hurrell	1	8/22	ICP/0600	ICP/2200
7. Control Operations: TASK - Continue to secure control line on south end of fire PURPOSE - Keep fire west of 406 END STATE - Stop easterly progression of the fire beyond 406 Road						
8. Special Instructions: Utilize field maps for drop points, safety zones, and potential helispots Ensure that comms are functional throughout the entire division Stay hydrated Local engines are also available for initial attack Make sure escape routes and safety zones are identified and known						
9. Division/Group Communication Summary						
Communications Summary						
Channel	Function	RX Frequency	RX Tone	TX Frequency	TX Tone	
1 TAC 1	TAC	168.0500 N	110.9	168.0500 N	110.9	
6 MICA BLM Primary	CMD	164.5250 N	NONE	163.0250 N	100.0	
7 Monument FS Secondary	CMD	169.9250 N	107.2	165.5625 N	131.8	
8 Cedar Peak	CMD	170.9750 N	110.9	168.7000 N	110.9	
12 Air to Ground Primary	A/G	167.1250 N	NONE	167.1250 N	NONE	
13 AIR TO GROUND SECONDARY	A/G	166.6125 N	NONE	166.6125 N	NONE	
16 Air Guard	AIRGUARD	168.6250 N	NONE	168.6250 N	110.9	
Prepared by (Resource Unit Ldr(t)) <i>Matt Tonello</i>				Date 08/10/2023	Time 2030	

DIVISION ASSIGNMENT LIST			1. Branch	2. Division A (Page 3 / 3)		
3. Incident Name RIDGE CREEK			4. Operational Period Date: 08/11/2023 Time: 0600 - 2200			
5. Operations Personnel						
Field Operations Section Chief	Cory Henry/Brian Wolvert (T)		Branch Director			
Planning Operations Section Chief	Keith Murphy/Darren Bridges (T)		Division Supervisor		Todd Wood/Josh Strohmeier (T) 602-617-2017	
6. Resources Assigned this Period						
RO#	Strike Team/Task Force/ Resource Designator	Leader	# People	LWD	Drop Off PT./Time	Pick Up PT./Time
O-35	TFLD	Jerman	1	8/21	ICP/0600	ICP/2200
O-111	TFLD (t)	Primmer	1	8/22	ICP/0600	ICP/2200
	HEQB (t)	Vickers	1		ICP/0600	ICP/2200
O-89	HEQB	Schielke	1	8/23	ICP/0600	ICP/2200
O-90	HEQB(t)	Oikarinen	1	8/23	ICP/0600	ICP/2200
O-98	FMOD Brothers Fire LLC.	Rosander	2	8/22	ICP/0600	ICP/2200
O-78	SOFR	O'Brien	1		ICP/0600	ICP/2200
O-6.36	SOFR	Banaszak	1	8/19	ICP/0600	ICP/2200
O-19	Wilderness Medics	Axel	1	8/19	ICP/0600	ICP/2200
O-20	EMTF	Wolfstitch	1	8/20	ICP/0600	ICP/2200
7. Control Operations: TASK - Continue to secure control line on south end of fire PURPOSE - Keep fire west of 406 END STATE - Stop easterly progression of the fire beyond 406 Road						
8. Special Instructions: Utilize field maps for drop points, safety zones, and potential helispots Ensure that comms are functional throughout the entire division Stay hydrated. Local engines are also available for initial attack Make sure escape routes and safety zones are identified and known						
9. Division/Group Communication Summary						
Communications Summary						
Channel	Function	RX Frequency	RX Tone	TX Frequency	TX Tone	
1 TAC 1	TAC	168.0500 N	110.9	168.0500 N	110.9	
6 MICA BLM Primary	CMD	164.5250 N	NONE	163.0250 N	100.0	
7 Monument FS Secondary	CMD	169.9250 N	107.2	165.5625 N	131.8	
8 Cedar Peak	CMD	170.9750 N	110.9	168.7000 N	110.9	
12 Air to Ground Primary	A/G	167.1250 N	NONE	167.1250 N	NONE	
13 AIR TO GROUND SECONDARY	A/G	166.6125 N	NONE	166.6125 N	NONE	
16 Air Guard	AIRGUARD	168.6250 N	NONE	168.6250 N	110.9	
Prepared by (Resource Unit Ldr(t)) <i>Matt Tonello</i>				Date 08/10/2023	Time	

DIVISION ASSIGNMENT LIST			1. Branch	2. Division K		
3. Incident Name RIDGE CREEK			4. Operational Period Date: 08/11/2023 Time: 0600 - 2200			
5. Operations Personnel						
Field Operations Section Chief	Cory Henry/Brian Wolvert (T)		Branch Director			
Planning Operations Section Chief	Keith Murphy/Darren Bridges (T)		Division Supervisor		Beau Cartwright	
6. Resources Assigned this Period						
RO#	Strike Team/Task Force/ Resource Designator	Leader	# People	LWD	Drop Off PT./Time	Pick Up PT./Time
O-91	TFLD(t)	Coppert	1	8/23	ICP/0600	ICP/2200
O-103	REM NIM Medical	Mason	4	8/23	ICP/0600	ICP/2200
7. Control Operations: TASK - Continue to scout for viable control lines northeast of FSR 406 PURPOSE – To find an optimal location for control line END STATE – Control line established						
8. Special Instructions: Utilize field maps for drop point, safety zones, and potential helispots Ensure that comms are functional throughout the entire division Stay hydrated Local engines are also available for initial attack Make sure escape routes and safety zones are identified and known						
9. Division/Group Communication Summary						
Communications Summary						
Channel	Function	RX Frequency	RX Tone	TX Frequency	TX Tone	
2 TAC2	TAC	168.2000 N	110.9	168.2000 N	110.9	
6 BLM MICA	CMD	164.5250 N	NONE	163.0250 N	100.0	
7 FS MONUMENT	CMD	169.9250 N	107.2	165.5625 N	131.8	
8 CEDAR PEAK	CMD	170.9750 N	110.9	168.7000 N	110.9	
12 AIR TO GROUND PRIMARY	A/G	167.1250 N	NONE	167.1250 N	NONE	
13 AIR TO GROUND SECONDARY	A/G	166.6125 N	NONE	166.6125 N	NONE	
16 AIR GUARD	A?G	168.6250 N	NONE	168.6250 N	110.9	

DIVISION ASSIGNMENT LIST			1. Branch		2. Division Z (Page 1 / 3)	
3. Incident Name RIDGE CREEK			4. Operational Period Date: 08/10/2023 Time: 0600 - 2200			
5. Operations Personnel						
Field Operations Section Chief		Cory Henry/Brian Wolvert (T)		Branch Director		
Planning Operations Section Chief		Keith Murphy/Darren Bridges (T)		Division Supervisor		Chris White 541-517-6065
6. Resources Assigned this Period						
RO#	Strike Team/Task Force/ Resource Designator	Leader	# People	LWD	Drop Off PT./Time	Pick Up PT./Time
C-5	CRW1 Klamath IHC	Owensbey	19	8/21	ICP/0600	ICP/2200
C-8	CRW1 Black Mountain IHC	Milligan	22	8/22	ICP/0600	ICP/2200
C-11	CR2I Miller Timber	Yashima	20	8/22	ICP/0600	ICP/2200
	TFLD IDL Crews	Humbert	1		ICP/0600	ICP/2200
	CR2I IDL PF Alpha	Bouris	20		ICP/0600	ICP/2200
	CR2I IDL PF Bravo	Lewis	20		ICP/0600	ICP/2200
	CR2I IDL PF Charlie	Farell	20		ICP/0600	ICP/2200
O-13	FMOD Newman	Harris	2	8/18	ICP/0600	ICP/0600
O-92	FMOD - WHITE HORSE FORESTRY, INC.	Mehaffey	2	8/23	ICP/0600	ICP/2200
O-99	FMOD - SWEDBERG CONTRACTING CORP.	Hileman	2	8/22	ICP/0600	ICP/2200
E-6	ENG6 NDND5 E5274	Mountain	4	8/19	ICP/0600	ICP/2200
E-9	WTT2 Sagle	Stuckey	2	8/18	ICP/0600	ICP/2200
E-1	DOZ2 Foust	Newcome	1	8/17	ICP/0600	ICP/2200
7. Control Operations: TASK - Continue preparing line on FSR 437 and 625 and on indirect line connecting FSR 625 and FSR 406 PURPOSE - Keep fire north of Hell's Canyon and east of the north fork of the Hayden to protect private residences and industrial land to the southwest END STATE - Stop southerly progression of fire beyond 206 Rd						
8. Special Instructions: Utilize field maps for drop points, safety zones, and potential helispots Ensure that comms are functional throughout the entire division. Stay hydrated. Be aware of heavy equipment operations on road.						
9. Division/Group Communication Summary						
Communications Summary						
Channel	Function	RX Frequency	RX Tone	TX Frequency	TX Tone	
3 TAC 3	TAC	168.6000 N	110.9	168.6000 N	110.9	
1 MICA BLM	COMMAND	164.5250 N	NONE	163.0250 N	100.0	
7 Monument FS-Secondary	COMMAND	169.9250 N	107.2	165.5625 N	131.8	
8 Cedar Peak	CMD	170.9750 N	110.9	168.7000 N	110.9	
12 Air to Ground Primary	A/G	167.1250 N	NONE	167.1250 N	NONE	
13 AIR TO GROUND SECONDARY	A/G	166.6125 N	NONE	166.6125 N	NONE	
16 Air Guard	AIRGUARD	168.6250 N	NONE	168.6250 N	110.9	
Prepared by (Resource Unit Ldr(t)) <i>Matt Tonello</i>				Date 08/10/2023	Time 1900	

DIVISION ASSIGNMENT LIST				1. Branch		2. Division Z (Page 2 / 3)	
3. Incident Name RIDGE CREEK				4. Operational Period Date: 08/11/2023 Time: 0600 - 2200			
5. Operations Personnel							
Field Operations Section Chief		Cory Henry/Brian Wolvert (T)		Branch Director			
Planning Operations Section Chief		Keith Murphy/Darren Bridges (T)		Division Supervisor		Chris White 541-517-6065	
6. Resources Assigned this Period							
RO#	Strike Team/Task Force/ Resource Designator	Leader	# People	LWD	Drop Off PT./Time	Pick Up PT./Time	
E-2	EXC2 Foust 35653	Kramer	1	8/17	ICP/0600	ICP/2200	
E-78	EXC2 Foust 529581		1	8/23	ICP/0600	ICP/2200	
E-7	GRD1 Foust L00652	Kramer	1	8/18	ICP/0600	ICP/2200	
E-25	HETF AKRE LOGGING, LLC AKRE 1	Akre	7	8/20	ICP/0600	ICP/2200	
E-27	HETF BONNALIE LOGGING LLC TASK FORCE	Bonnali	8	8/20	ICP/0600	ICP/2200	
E-23	VUTV D1 CDA River - Gator						
E-60	DUMP Joe Hester Logging	Irvine	1	8/23	ICP/0600	ICP/2200	
E-61	FRNT Joe Hester Logging	Schopp	1	8/23	ICP/0600	ICP/2200	
E-69	LOGL AKRE LOGGING		2	8/23	ICP/0600	ICP/2200	
E-73	LOGP		2	8/23	ICP/0600	ICP/2200	
O-66	TFLD	Schelin	1		ICP/0600	ICP/2200	
O-37	TFLD(t)	Cobb	1	8/16	ICP/0600	ICP/2200	
O-88	TFLD(t)	Mefford	1	8/22	ICP/0600	ICP/2200	
7. Control Operations: TASK - Continue preparing line on FSR 437 and 625 and on indirect line connecting FSR 625 and FSR 406 PURPOSE - Keep fire north of Hell's Canyon and east of the north fork of the Hayden to protect private residences and industrial land to the southwest END STATE - Stop southerly progression of fire beyond 206 Rd							
8. Special Instructions: Utilize field maps for drop points, safety zones, and potential helispots Ensure that comms are functional throughout the entire division. Stay hydrated. Be aware of heavy equipment operations on road.							
9. Division/Group Communication Summary							
Communications Summary							
Channel	Function	RX Frequency	RX Tone	TX Frequency	TX Tone		
3 TAC 3	TAC	168.6000 N	110.9	168.6000 N	110.9		
1 MICA BLM	COMMAND	164.5250 N	NONE	163.0250 N	100.0		
7 Monument FS-Secondary	COMMAND	169.9250 N	107.2	165.5625 N	131.8		
8 Cedar Peak	CMD	170.9750 N	110.9	168.7000 N	110.9		
12 Air to Ground Primary	A/G	167.1250 N	NONE	167.1250 N	NONE		
13 AIR TO GROUND SECONDARY	A/G	166.6125 N	NONE	166.6125 N	NONE		
16 Air Guard	AIRGUARD	168.6250 N	NONE	168.6250 N	110.9		
Prepared by (Resource Unit Ldr(t)) <i>Matt Tonello</i>				Date 08/10/2023		Time 1730	

DIVISION ASSIGNMENT LIST			1. Branch	2. Division Z (Page 3 / 3)		
3. Incident Name RIDGE CREEK			4. Operational Period Date: 08/11/2023 Time: 0600 - 2200			
5. Operations Personnel						
Field Operations Section Chief	Cory Henry/Brian Wolvert (T)		Branch Director			
Planning Operations Section Chief	Keith Murphy/Darren Bridges (T)		Division Supervisor		Chris White 541-517-6065	
6. Resources Assigned this Period						
RO#	Strike Team/Task Force/ Resource Designator	Leader	# People	LWD	Drop Off PT./Time	Pick Up PT./Time
O-2	HEQB	Hajos	1	8/17	ICP/0600	ICP/2200
O-12	HEQB	Letscher	1	8/20	ICP/0600	ICP/2200
O-25	HEQB	Rexrode	1	8/22	ICP/0600	ICP/2200
	HEQB (t)	Schumacher	1		ICP/0600	ICP/2200
O-38	HEQB (t)	Hess	1	8/21	ICP/0600	ICP/2200
O-34	HEQB (t)	Harger	1	8/22	ICP/0600	ICP/2200
O-1.2	SOFR	Wurzauf	1	8/18	ICP/0600	ICP/2200
E-30	AMB1 BOUNDARY AMB SERVICE UNIT 2	Rinella	2	8/20	ICP/0600	ICP/2200
E-80	MESU Kootenai Fire & Rescue	Miller	2	8/23	ICP/0600	ICP/2200
7. Control Operations: TASK - Continue preparing line on FSR 437 and 625 and on indirect line connecting FSR 625 and FSR 406 PURPOSE - Keep fire north of Hell's Canyon and east of the north fork of the Hayden to protect private residences and industrial land to the southwest END STATE - Stop southerly progression of fire beyond 206 Rd						
8. Special Instructions: Utilize field maps for drop points, safety zones, and potential helispots Ensure that comms are functional throughout the entire division. Stay hydrated. Be aware of heavy equipment operations on road.						
9. Division/Group Communication Summary						
Communications Summary						
Channel	Function	RX Frequency	RX Tone	TX Frequency	TX Tone	
3 TAC 3	TAC	168.6000 N	110.9	168.6000 N	110.9	
1 MICA BLM	COMMAND	164.5250 N	NONE	163.0250 N	100.0	
7 Monument FS-Secondary	COMMAND	169.9250 N	107.2	165.5625 N	131.8	
8 Cedar Peak	CMD	170.9750 N	110.9	168.7000 N	110.9	
12 Air to Ground Primary	A/G	167.1250 N	NONE	167.1250 N	NONE	
13 AIR TO GROUND SECONDARY	A/G	166.6125 N	NONE	166.6125 N	NONE	
16 Air Guard	AIRGUARD	168.6250 N	NONE	168.6250 N	110.9	
Prepared by (Resource Unit Ldr(t)) Matt Tonello				Date 08/10/2023	Time 2230 hrs	

AIR OPERATIONS SUMMARY 220		Prepared By: John Fish		Prepared: 08/10/2023		Prepared Time: 1700 hrs.	
INCIDENT NAME: Ridge Creek Fire		OPERATIONAL PERIOD 8/11/23		START TIME 0900	END TIME 2000	SUNRISE 0537	SUNSET 2006

REMARKS - All aircraft orders thru Air Attack if on scene, otherwise thru AOBDD (cell phone) - Large Electric Transmission Line through center of fire area	MEDICAL RESPONSE AIRCRAFT * Follow Medical Plan ICS-206 * Ridge Creek 3/8181 8,000 feet MSL. 0700 – 2100 Hours	TFR
--	---	------------

PERSONNEL	NAME	PHONE #	FREQUENCIES	AM	FM	FIXED-WING Avail/ Type/ Make-Model/ N#/ Base
AOBD	John Fish	850-843-0977	A/G PRI		167.1250	ATGS Platforms: N76WA Call Sign – AA 104
ASGS			A/G SEC		166.6125	F/W Bases: Coeur d'Alene Airport (COE)
ATGS ATGS(T)	Matt Counts Sam Bullington	406-270-7437 406-547-4416				R/W Bases: Coeur d'Alene Airport (COE) Sand Point Air Tankers LATs – T105 & T132 SEATs – FB-205, FB-206, FB-217, FB-219

HELICOPTERS

FAA N#	TY	MAKE/ MODEL	BASE	START AVAIL	REMARKS	FAA N#	TY	MAKE/ MODEL	BASE	START	AVAIL	REMARKS
N258PJ	1	CH-47D	COE	0800	0900				COE			Bucket
N214B	1	B214	Sand Point	0800	0900				Sand Point			Bucket
N214KA	2	B212	COE	0800	0900				COE			Bucket
N28HX	2	B205+	COE	0800	0900				COE			Bucket/Rappel
N102RF	3	AS350B2	COE	0800	0900				COE			Bucket/Recon

**Ridge Creek Fire
EA Silver Team Phone List**

Position	Name	Cell
Incident Commander	Steve Miller	414-308-6861
Deputy Incident Commander (trainee)	Chris Woods	573-315-8394
Safety Officer	Lee Osterland	231-357-7381
Safety Officer	Terry Trapp	715-610-3695
Safety Officer (trainee)	Kent Glazer	715-340-0891
Safety Officer Line	Tim Banaszak	715-412-0322
Fire Information	FireNet	208-953-7022
Public Information Officer	Clark McCreedy	989-292-9373
Public Information Officer	Brian VanVickle	815-994-8522
Liaison Officer	Ron Robinson	612-860-1257
Liaison Officer	Cecile Stelter	814-688-7133
Operations Section Chief	Keith Murphy	906-250-1382
Operations Section Chief	Cory Henry	906-280-4144
Strategic Operations	Joe Alyea	509-671-1610
Air Operations Branch Director	John Fish	850-843-0977
Planning Section Chief	Robbi Mecus	518-524-6622
Planning Section Chief	Peter Fischer	304-618-9083
Planning Section Chief (trainee)	Aaron Young	608-558-5844
Logistics Section	General	208-891-6611
Medical Unit Leader	Robert White	715-415-2400
Medical Unit Leader	Mike Passarelli	330-633-0547
Medical Unit Leader (trainee)	Robert Eggert	708-691-2313
Communications Unit	Arnold Irvine	814-688-4236
Finance Section	FireNet	208-510-5158

1. Incident Name:		2. Date/Time Prepared:		3. Operational Period: DAY SHIFT							
Ridge Creek Fire		Date:	08/10/23	Date/Time From:	08/11/23 0600	Date/Time To:	08/11/23 2200				
		Time:	1100								
4. Basic Radio Channel Use:											
Zone Group	Ch #	Function	Channel Name	Assignment	RX Freq	RX Tone/NAC	TX Freq	TX Tone/NAC	Mode (A,D, or M)	Remarks	
1	1	TACTICAL	TAC 1	DIV A	168.0500 N	110.9	168.0500 N	110.9	A		
1	2	TACTICAL	TAC 2	DIV K	168.2000 N	110.9	168.2000 N	110.9	A		
1	3	TACTICAL	TAC 3	DIV Z	168.6000 N	110.9	168.6000 N	110.9	A		
1	4	TACTICAL	TAC 4	STRUCTURE GROUP	166.7250 N	110.9	166.7250 N	110.9	A		
1	5	TACTICAL	TAC 5	CONTINGENCY GROUP	166.7750 N	110.9	166.7750 N	110.9	A		
1	6	COMMAND	MICA/BLM	ALL DIVS	164.5250 N	NONE	163.0250 N	100.0	A	BLM MICA RPT'R	
1	7	COMMAND	MONUMENT	ALL DIVS	169.9250 N	107.2	165.5625 N	131.8	A	FS MONUMENT SECONDARY	
1	8	COMMAND	CEDAR PEAK	ALL DIVS	170.9750 N	110.9	168.7000 N	110.9	A	Cedar peak primary	
1	12	TACTICAL	AIR TO GROUND PRIMARY	All Divs	167.1250 N	NONE	167.1250 N	NONE	A	A/G PRIMARY	
1	13	TACTICAL	AIR TO GROUND SECONDARY	All Divs	166.6125 N	NONE	166.6125 N	NONE	A	A/G SECONDARY	
1	14	EMS	EMS	EMS 2	155.2800 N	NONE	155.2800 N	156.7	A	EMS 2	
1	16	AIR GUARD	AIRGUARD	ALL DIVS	168.6250 N	NONE	168.6250 N	110.9	A	EMERGENCY CALL TO AIRCRAFT	
5. Special Instructions:											
6. Prepared By				Name: : ARNIE IRVINE <td colspan="4">Signature: /s/ Arnie Irvine </td>				Signature: /s/ Arnie Irvine			
Communications Unit Leader								Date/Time 8/10/23 1800			

MEDICAL PLAN (ICS 206 WF)

Controlled Unclassified Information//Basic

1. Incident/Project Name		2. Operational Period			
Ridge Creek Fire		Date/Time 0600 – 0600		8/11/2023 to 8/12/2023	
3. Ambulance Services					
Name	Complete Address	Phone & EMS Frequency	Advanced Life Support (ALS) Yes No		
Timber Lake Fire Protection	5984 E Highway 54 Athol Id 54 west of 95	208-772-3283	<input type="checkbox"/>	<input checked="" type="checkbox"/>	
Kootenai County EMS	4381 W. Seltice Way CDA, ID	208-930-4224	<input checked="" type="checkbox"/>	<input type="checkbox"/>	
4. Air Ambulance Services					
Name	Phone	Type of Aircraft & Capability			
Life Flight	Hayden or Sandpoint ID	208-772-3283			
Short Haul or Hoist	Through Coeur d Alene Dispatch	208-772-3283			
Agency Helo	USFS Coeur d Alene Dispatch	208-772-3283			
5. Hospitals					
Name Complete Address	GPS Datum – WGS 84 Coordinate Standard Degrees Decimal Minutes DD° MM.MMM' N - Lat DD° MM.MMM' W - Long	Travel Time Air Gnd	Phone	Helipad Yes No	Level of Care Facility
Kootenai General Hospital Coeur d'Alene	Lat: 47 45.658 N	15 min 30 min	208-625-4000	<input checked="" type="checkbox"/> <input type="checkbox"/>	Level 2 Trauma
	Long: 116 47 41.684W				
	VHF:				
Bonner General Hospital Sandpoint, ID	Lat: 48 16.650	15 min 60 min	208-263-1441	<input checked="" type="checkbox"/> <input type="checkbox"/>	Level 4 Trauma
	Long: 116 32.92				
	VHF:				
Sacred Heart Medical	Lat: 47 38.500	25 min 120 min	509-474-3131	<input checked="" type="checkbox"/> <input type="checkbox"/>	Level 2 Trauma
	Long: 117 24.800				
	VHF:				
Harbour View Medical Center	Lat: 47 36.238	120 min 300 min	206-744-3074 206744-5735 Burn center #	<input checked="" type="checkbox"/> <input type="checkbox"/>	Level 1 Trauma & Burn Center
	Long: 122 19.461				
	VHF:				
Northwest Urgent Care 7173 E Super I Loop Suite A Athol, ID Intersection of 54 & 95		10 min		<input type="checkbox"/> <input checked="" type="checkbox"/>	Urgent care only Hours: 0800-1800 M-F 0800-1600 S-S
6. Division Branch Group		Area Location Capability			
A		Point of Contact:		Lisa Axel (612) 532-5181 EMTF & Steve Wolfstitch EMTF (520)508-9807	
		EMS Responders & Capability:		<u>ALS & RAT</u>	
		Equipment Available on Scene:		<u>ALS & RAT</u>	
		Medical Emergency Channel:			
		ETA for Ambulance to Scene:			
		Air:		40min	
		Ground:		10 min to the Alpha/Zulu Break	
		Approved Helispot:		H-90 H-70	
		Lat:		N47 49.490 N47 50.335	
		Long:		116 35.685 116 33.685	

MEDICAL PLAN (ICS 206 WF)

Controlled Unclassified Information//Basic

1. Incident/Project Name	2. Operational Period			
K	Point of Contact:	Kootenai RAT Tony (208) 869-2657		
	EMS Responders & Capability:	RAT		
	Equipment Available on Scene:	ALS		
	Medical Emergency Channel:			
	ETA for Ambulance to Scene:			
	Air:			
	Ground:			
Approved Helispot:				
7. Name & Location		Remote Camp Location(s)		
Z	Point of Contact:	Boundary Ambulance (Frank)(208) 715-5038 & REM's (Andy)(605) 545-4293 & EMPF (Scan) (208) 403-9937		
	EMS Responders & Capability:	ALS Ambulance & REM's & EMPF		
	Equipment Available on Scene:	ALS Ambulance & REM's & EMPF		
	Medical Emergency Channel:			
	ETA for Ambulance to Scene:			
	Air:	40 min		
	Ground:	10 min to the Alpha/Zulu break		
	Approved Helispot:	H-10		
	Lat:	N47 49.300		
	Long:	116 39.650		
Contingency	Point of Contact:			
	EMS Responders & Capability:			
	Equipment Available on Scene:			
	Medical Emergency Channel:			
	ETA for Ambulance to Scene:			
	Air:			
	Ground:			
	Approved Helispot:			
	Lat:			
	Long:			
Structure Protection	Point of Contact:	UNSTAFED		
	EMS Responders & Capability:			
	Equipment Available on Scene:			
	Medical Emergency Channel:			
	ETA for Ambulance to Scene:			
	Air:			
	Ground:			
	Approved Helispot:			
	Lat:			
	Long:			
	Point of Contact:	UNSTAFED		
	EMS Responders & Capability:			
	Equipment Available on Scene:			
	Medical Emergency Channel:			
	ETA for Ambulance to Scene:			
	Air:			
	Ground:			
	Approved Helispot:			
	Lat:			
	Long:			
8. Prepared By (Medical Unit Leader)		9.	10. Reviewed By (Safety Officer)	11. Date/Time
Mike Passarelli MEDL <i>Mike Passarelli MEDL</i>			Lee Osterland <i>Lee Osterland</i>	8/10/23 1700

Incident: Ridge Creek Fire	Date: 8/11/2023	Shift: Day
--------------------------------------	---------------------------	----------------------



SAFETY MESSAGE

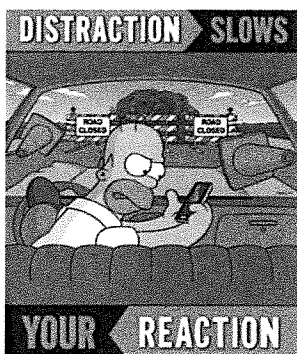
SAFETY IS OUR FIRST PRIORITY

Fire fighter safety comes first on every fire, every time



SAFETY THOUGHT

The #1 cause of fatalities on the forest fires is heart attacks. **THE #2 CAUSE OF FATALITIES ON FOREST FIRES IS DRIVING.** One of the quickest ways to lose credibility with the local community is poor driving. Be safe on the fire line and when commuting to and from the fire!



Motor vehicle crashes accounts for the **highest percentage of fatalities** for those responding to or returning from a fire, as well as on the fire ground. **A seat belt is part of your ppe. Buckle up every time.**

WHAT DOES SAFE DRIVING LOOK LIKE?		
<ul style="list-style-type: none"> • Lights on when vehicle is on. • SLOW DOWN! • Use a spotter when backing. 	<ul style="list-style-type: none"> • Identify your turn-outs? • Heavy Equipment has R.O.W. • Seat Belts on. 	<ul style="list-style-type: none"> • Minimize Distractions <ul style="list-style-type: none"> ○ Cell phones, I-pods ○ Wildlife

****Safety is a learned behavior. Make it a way of life!****

Complacency

- People who are repeatedly exposed to dangerous situations become less concerned and cautious about them especially with repeated exposure to dangerous situations that do not actually occur.

Safety Officer	Line Safety
Lee Osterland SOFC, Terry Trapp SOF2, Ken Glazer SOF2(t)	Tim Banaszak Doug Wurzauf Sean O'brien



Finance Message

Finance Phone # (208) 510-5158 (Voice only. No Text)

Finance Email: 2023.ridgecreek.finance@firenet.gov

SUBJECT: *Include Key Word TIME* for Overhead, Crews & Cooperators

SUBJECT: *Include Key Word EQUIPMENT* for Contract

FINANCE CHECK IN:

2023.ridgecreek.finance@firenet.gov

PLEASE ENSURE THE BELOW DOCUMENTS ARE EMAILED

Overhead, Crews & Cooperator Resources	Contract Resources
<ul style="list-style-type: none"> • Check-In: Crew Manifest, Cooperative Agreement (if applies), AD Hire Letter, Resource Order • Daily: Crew Time Report (CTR), Shift Tickets 	<ul style="list-style-type: none"> • Check-In: Resource Order, Contract/VIPR Agreement (make sure you have your UEI, Pre-Inspection • Daily: Shift Tickets, receipts (fuel issues, claims, etc.)

REMINDERS

*** WE WILL BE COMPLETELY DIGITAL ON THIS INCIDENT. IF YOU NEED ASSISTANCE, PLEASE CONTACT FINANCE AT (208) 510-5158 or 2023.ridgecreek.finance@firenet.gov**

- * PLEASE MAKE SURE C OR E # IS ON THE CTR OR SHIFT TICKET
- * PLEASE SHOW YOUR LUNCH BREAK
- * PLEASE USE MILITARY TIME (0001-2400)
- * WHEN CLAIMING HAZARD PAY YOU MUST INCLUDE THE SUPPRESSION ACTION BEING PERFORMED. THIS INCLUDES OPERATIONS WHICH DIRECTLY SUPPORT CONTROL OF FIRE (E.G., ACTIVITIES TO EXTINGUISH THE FIRE, FIREFIGHTING, GROUND SCOUTING, SPOT FIRE PATROLLING, SEARCH AND RESCUE OPERATIONS, AND BACKFIRING).
- * WHEN SIGNING YOUR OF-288 or OF-286 PLEASE DO NOT LOCK IT or PROTECT THE SIGNATURE, WE HAVE TO BE ABLE TO SIGN IT AND SEND YOU A COPY

For assistance with CLAIMS please call (208) 510-5158 or submit a request to the finance email inbox, subject comp/claims.

CHECK-IN PROCEDURE

1. Scan the QR code on the cover of the IAP and click the Check-in button
 - If you have questions, visit Check-In in the Plans yurt at ICP and we can assist you with the virtual form, or call 208-891-6074
2. Check in with Finance – see the Finance page

DEMOB PROCEDURE

1. If you are on the Tentative Demob list and you don't think you should be, contact your supervisor and Demob.
2. If you are not on the Tentative Demob list in the IAP, your section chief needs to submit a 213 to Demob to release you at least 24 hours in advance (72 hours if flight is needed).
3. In addition to the above, if you need a flight arranged, contact Demob 72 hours prior to your anticipated demob time to provide flight request information.
4. At your scheduled release date/time, visit Demob in the Plans yurt at ICP. The Demob process is mostly in person (not virtual) at this time. However, anyone who needs to demob remotely (if you cannot come to ICP) can call 208-891-6074.

08/12/2023

TENTATIVE RELEASE

RIDGE CREEK US-ID-IPF-000447

EQUIPMENT

E-11

0615

(ENG6)

ENG6 - NDND E5275

LOGISTICS SERVICE HOURS

BREAKFAST: 0530 - 0900

DINNER: 1700 - 2100

SHOWERS: 0500 – 2200

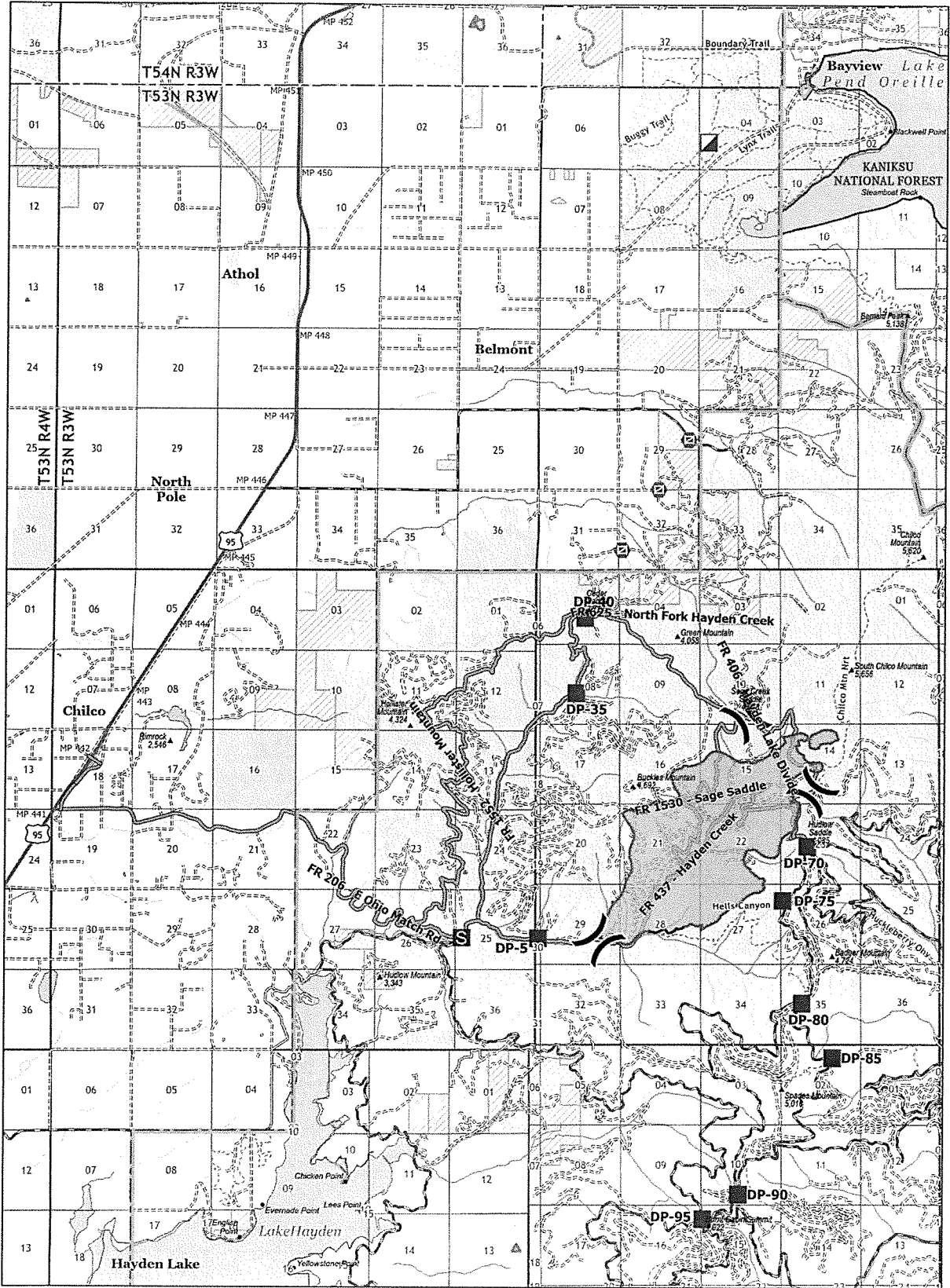
(CLOSED 1100 – 1300)

SUPPLY &

GROUND SUPPORT : 0600 - 2130

ORDERING: 0700 – 2000

- Camping only in Team designated areas!
- State Park policy prohibits the use of hammocks tied to trees. Please respect this!



RIDGE CREEK
IDIPF000447

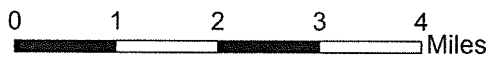
2,402 acres
8/10/2023 @ 1330 hrs
North American 1983 Datum.
Lat/Long Grid

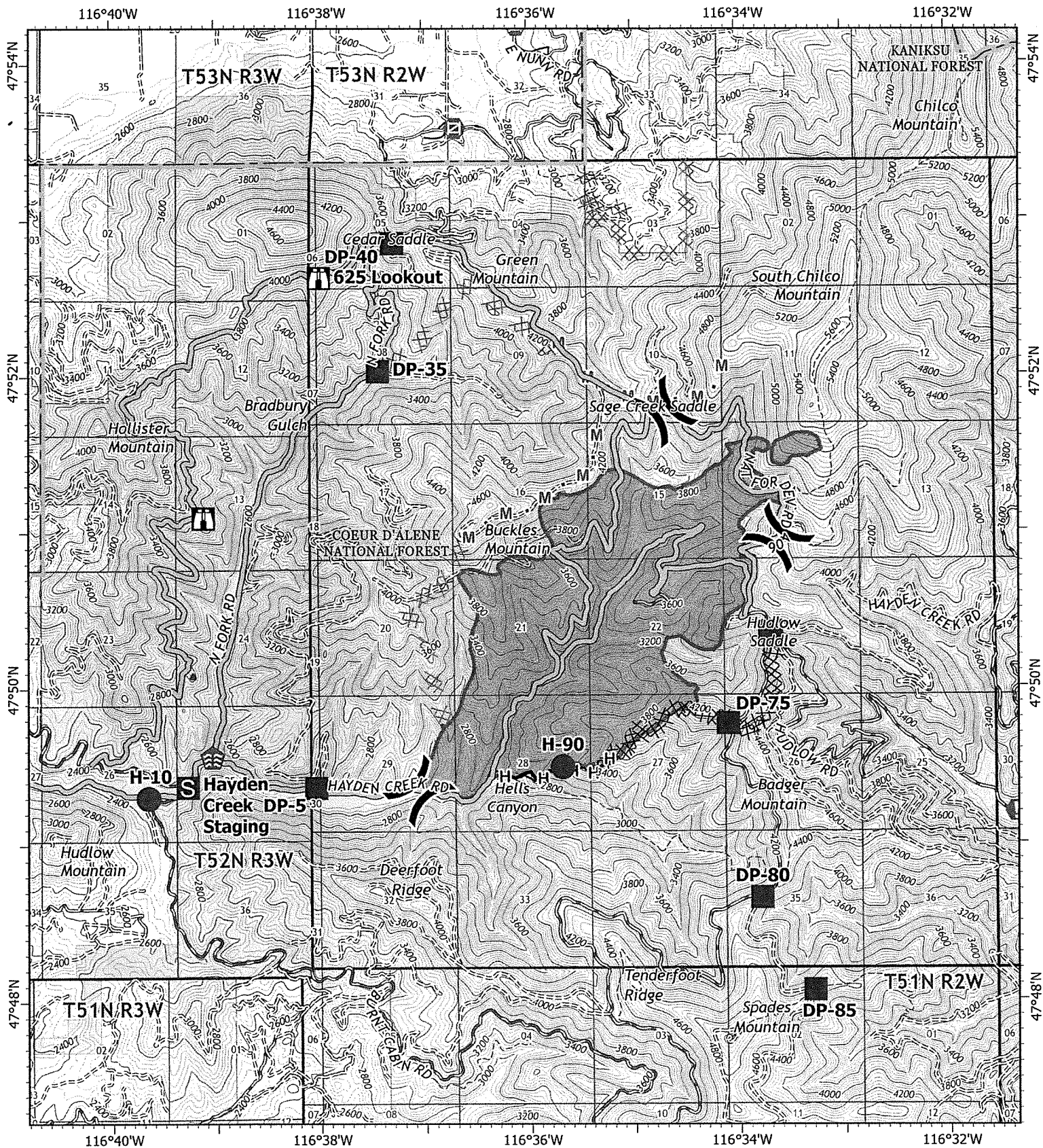
- Main Access Roads
- - - Unimproved Road
- Improved Road

- (X) Division Break
- ▣ Incident Command Post
- Drop Point

- ▣ Staging Area
- ⊗ Gate
- ▣ Timber Company Lands

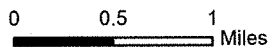
Bureau of Land Management (BLM)
State
US Forest Service (USFS)





IAP
RIDGE CREEK
IDIPF000447
08/11/2023 Day

2,402 acres at 8/10/2023 @ 1330 hrs
 Acres from IR



- | | | |
|--------------------|-------------------------------------|---------------------------------|
| ● Helispot | ⊗ Stream Crossing | — Uncontained |
|) (Division Break | ⊗ Completed Dozer Line | ▭ Wildfire Daily Fire Perimeter |
| ■ Drop Point | H— Completed Hand Line | Bureau of Land Management (BLM) |
| S Staging Area | ⊗ Planned Dozer Line | State |
| ⓘ Lookout | M * Planned Mixed Construction Line | US Forest Service (USFS) |
| ⊙ Value at Risk | — Access or Improved Road | Private |
| ⊘ Gate | — Contained | |



MEDICAL PLAN (ICS 206a WF)

Controlled Unclassified Information//Basic

Medical Incident Report

FOR A NON-EMERGENCY INCIDENT, WORK THROUGH CHAIN OF COMMAND TO REPORT AND TRANSPORT INJURED PERSONNEL AS NECESSARY.

FOR A MEDICAL EMERGENCY: IDENTIFY ON SCENE INCIDENT COMMANDER BY NAME AND POSITION AND ANNOUNCE "MEDICAL EMERGENCY" TO INITIATE RESPONSE FROM IMT COMMUNICATIONS/DISPATCH.

Use the following items to communicate situation to communications / dispatch.

1. CONTACT COMMUNICATIONS / DISPATCH (Verify correct frequency prior to starting report)

Ex: "Communications, Div. Alpha. Stand-by for Emergency Traffic."

2. INCIDENT STATUS: Provide incident summary (including number of patients) and command structure.

Ex: "Communications, I have a Red priority patient, unconscious, struck by a falling tree. Requesting air ambulance to Forest Road 1 at (Lat./Long.) This will be the Trout Meadow Medical, IC is TFLD Jones. EMT Smith is providing medical care."

Severity of Emergency / Transport Priority	<input type="checkbox"/> RED / PRIORITY 1 Life or limb threatening injury or illness. Evacuation need is IMMEDIATE <i>Ex: Unconscious, difficulty breathing, bleeding severely, 2°- 3° burns more than 4 palm sizes, heat stroke, disoriented.</i> <input type="checkbox"/> YELLOW / PRIORITY 2 Serious Injury or illness. Evacuation may be DELAYED if necessary. <i>Ex: Significant trauma, unable to walk, 2°- 3° burns not more than 1-3 palm sizes.</i> <input type="checkbox"/> GREEN / PRIORITY 3 Minor Injury or illness. Non-Emergency transport <i>Ex: Sprains, strains, minor heat-related illness.</i>
Nature of Injury or Illness & Mechanism of Injury	<div style="float: right; text-align: right; font-size: small;">Brief Summary of injury or illness (Ex: Unconscious, Struck by Falling Tree)</div>
Transport Request	Air Ambulance / Short Haul / Hoist Ground Ambulance / Other
Patient Location	Descriptive Location & Lat. Long (WGS84)
Incident Name	Geographic Name + "Medical" (Ex: Trout Meadow Medical)
On-Scene Incident Commander	Name of on-scene IC of incident within an Incident (Ex: TFLD Jones)
Patient Care	Name of Care Provider (Ex: EMT Smith)

3. INITIAL PATIENT ASSESSMENT: Complete this section for each patient as applicable (start with the most severe patient)

Patient Assessment: See IRPG Page 106

Treatment:

4. TRANSPORT PLAN:

Evacuation Location (if different): (Descriptive Location (drop point, intersection, etc.) or Lat. / Long.) Patient's ETA to Evacuation Location:

Helispot / Extraction Site Size and Hazards:

5. ADDITIONAL RESOURCES / EQUIPMENT NEEDS:

Example: Paramedic/EMT, Crews, Immobilization Devices, AED, Oxygen, Trauma Bag, IV/Fluid(s), Splints, Rope rescue, Wheeled litter, HAZMAT, Extrication

6. COMMUNICATIONS: Identify State Air/Ground EMS Frequencies and Hospital Contacts as applicable

Function	Channel Name/Number	Receive (RX)	Tone/NAC *	Transmit (TX)	Tone/NAC *
COMMAND					
AIR-TO-GRND					
TACTICAL					

7. CONTINGENCY: Considerations: If primary options fail, what actions can be implemented in conjunction with primary evacuation method? Be thinking ahead.

8. ADDITIONAL INFORMATION: Updates/Changes, etc.

REMEMBER: Confirm ETA's of resources ordered. Act according to your level of training. Be Alert. Keep Calm. Think Clearly. Act Decisively.