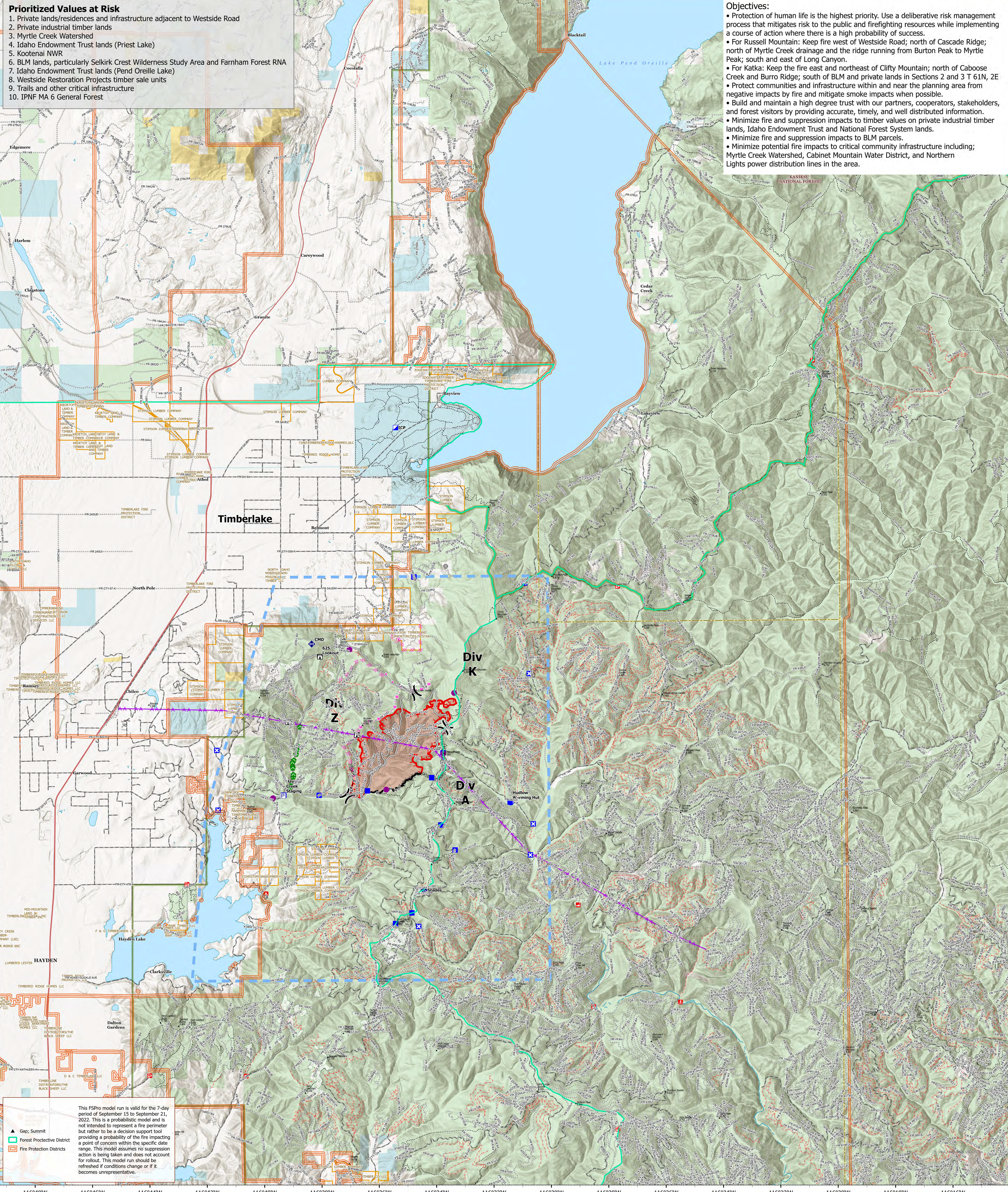


- Prioritized Values at Risk**
1. Private lands/residences and infrastructure adjacent to Westside Road
 2. Private industrial timber lands
 3. Myrtle Creek Watershed
 4. Idaho Endowment Trust lands (Priest Lake)
 5. Kootenai NWR
 6. BLM lands, particularly Selkirk Crest Wilderness Study Area and Farnham Forest RNA
 7. Idaho Endowment Trust lands (Pend Oreille Lake)
 8. Westside Restoration Projects timber sale units
 9. Trails and other critical infrastructure
 10. IPNF MA 6 General Forest

- Objectives:**
- Protection of human life is the highest priority. Use a deliberative risk management process that mitigates risk to the public and firefighting resources while implementing a course of action where there is a high probability of success.
 - For Russell Mountain: Keep fire west of Westside Road; north of Cascade Ridge; north of Myrtle Creek drainage and the ridge running from Burton Peak to Myrtle Peak; south and east of Long Canyon.
 - For Katka: Keep the fire east and northeast of Clifty Mountain; north of Caboose Creek and Burro Ridge; south of BLM and private lands in Sections 2 and 3 T 61N, 2E
 - Protect communities and infrastructure within and near the planning area from negative impacts by fire and mitigate smoke impacts when possible.
 - Build and maintain a high degree of trust with our partners, cooperators, stakeholders, and forest visitors by providing accurate, timely, and well distributed information.
 - Minimize fire and suppression impacts to timber values on private industrial timber lands, Idaho Endowment Trust and National Forest System lands.
 - Minimize fire and suppression impacts to BLM parcels.
 - Minimize potential fire impacts to critical community infrastructure including; Myrtle Creek Watershed, Cabinet Mountain Water District, and Northern Lights power distribution lines in the area.



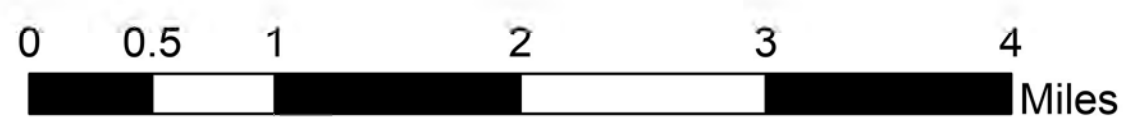
This FSPPro model run is valid for the 7-day period of September 15 to September 21, 2022. This is a probabilistic model and is not intended to represent a fire perimeter but rather to be a decision support tool providing a probability of the fire impacting a point of concern within the specific date range. This model assumes no suppression action is being taken and does not account for rollout. This model run should be refreshed if conditions change or if it becomes unrepresentative.

STRATEGIC OPERATIONS

RIDGE CREEK
IDIPF000447

08/12/2023 Day

2417 acres at 8/11/2023 @ 2251 hrs



- | | | | |
|--|------------------------|-----------------------------------|------------------------------|
| ● Event Point - Dynamic Lat/Long Table | ● Hot Spot - Spot Fire | — Completed Dozer Line | ▭ Forest Protective District |
| ● Label Point | ● Value at Risk | — Completed Hand Line | ▭ Fire Protection Districts |
| ● Pump | ● Gate | — Planned Dozer Line | ▭ Plantations |
| ● Helispot | ● Fire Station | — Planned Mixed Construction Line | ▭ CAMPGROUND |
|)(Division Break | ● Bridge | — Access or Improved Road | ▭ DAY USE AREA |
| ▭ Incident Command Post | ● Stream Crossing | — Aerial Hazard | ▭ FISHING SITE |
| ▭ Drop Point | ● Culvert | — Temporary Flight Restriction | ▭ SNOWPLAY AREA |
| ▭ Closure | ● Mobile Weather Unit | — Contained | ▭ TARGET RANGE |
| ▭ Staging Area | ● Repeater | — Uncontained | ▭ TRAILHEAD |
| ▭ Lookout | ● Water Source | ▭ Wildfire Daily Fire Perimeter | |

