

Corrected

Ridge Creek

Incident Action Plan

0600-2200

Sunday, August 13, 2023 0600 -

Monday, August 14, 2023 0600



Photo courtesy of PIO Brian VanVickle

ID-IPF-000447

P1QG9D (0104)



Corrected



QR Code to download the IAP and maps
<https://linktr.ee/2023ridgecreek>

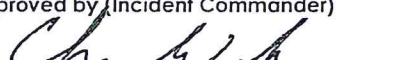
Corrected

Corrected

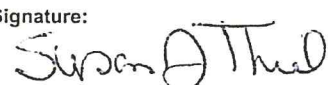
100

100

100

INCIDENT OBJECTIVES	1. Incident Name Ridge Creek Fire	2. Date August 12, 2023	3. Time 1830
4. Operational Period: Sunday, August 13, 2023 0600-2200			
5. General Control Objectives for the Incident <ul style="list-style-type: none"> • Provide for the protection of firefighter and public safety by implementing a course of action that achieves incident objectives while minimizing firefighter exposure, mitigating public safety issues, and is based on sound risk management principles • Protect infrastructure, private residences, private inholdings and businesses in the planning area from negative impacts by fire and mitigating smoke impacts when possible. This includes private inholdings and residences east of Hayden Lake and Hudlow Warming Hut • Minimize fire suppression impacts and fire effects on the watersheds of Hayden Creek and Hayden Lake and the associated Riparian Habitat Conservation Areas (RHCA). • Minimize fire impacts to timber values on private industrial timber lands and National Forest System lands. This includes Bottom Canyon and other planned timber sales and existing plantations • Minimize fire impacts to the Bonneville Power Administration Transmission lines north of the current fire area • Ensure active communications of fire status, planned management actions, and predicted fire behavior to Bonneville Power Administration so that the appropriate actions can be taken to manage the transmission lines • Use a deliberative risk management process that mitigates risk to firefighting resources and the public while pursuing a course of action to achieve incident objectives. Protection of human life is the highest priority on all actions. <ul style="list-style-type: none"> ○ Develop a population protection plan for private inholdings and residences east of Hayden Lake. Coordinate with Kootenai County Emergency Management and Bonner County as appropriate ○ Coordinate with the Kootenai County Sheriff on emergency evacuation plans as needed ○ Implement and maintain any road, trail, or area closures for public safety as needed • Build and maintain a high degree of trust with our partners, cooperators, stakeholders, and forest visitors by providing accurate, timely and well distributed information sharing • In addition to incident specific objectives and requirements, follow direction in strategic objectives and requirements found in the Ridge Creek WFDSS decision 			
5b. Incident Commander's Intent <ol style="list-style-type: none"> 1. To create an environment free of harassment of any kind. My goal is to create a workplace where employees would feel comfortable if their family members and loved ones worked there too. 2. Prioritized values at risk are: <ul style="list-style-type: none"> • Private property and residences • Hayden Creek and Hayden Lake Water Quality • Industrial timber lands and Bottom Canyon Timber Sales (Idaho Forest Group) and other planned timber sales • Bonneville Power Administration Transmission Line • Hudlow Warming Hut • Plantations 			
6. Weather Forecast & General Safety Message for Period – See Attached			
7. Attachments (mark if attached)			
<input checked="" type="checkbox"/> Organization List - ICS 203	<input checked="" type="checkbox"/> Weather Forecast	<input checked="" type="checkbox"/> Safety Message	
<input checked="" type="checkbox"/> Div. Assignment Lists - ICS 204	<input checked="" type="checkbox"/> Fire Behavior Forecast	<input checked="" type="checkbox"/> Medical Emergency Com Plan	
<input checked="" type="checkbox"/> Communications Plan - ICS 205	<input checked="" type="checkbox"/> Incident Map	<input type="checkbox"/>	
<input checked="" type="checkbox"/> Medical Plan - ICS 206	<input checked="" type="checkbox"/> Air Operations– ICS 220	<input type="checkbox"/>	
9. Prepared by (Planning Section Chief) Aaron Young – PSC(T)	9. Approved by (Incident Commander) IC 		

ORGANIZATION ASSIGNMENT LIST (ICS 203)

1. Incident Name:		2. Operational Period: 24 HR	
RIDGE CREEK		Date/Time From: 08/13/2023 0600	Date/Time To: 08/14/2023 0600
		SUN	MON
3. Incident Commander(s) and Command Staff:		SECURITY UNIT	CLARK, DAVID T WARMERDAM, MARK
IC/UC	STEVE MILLER MARIS GABLIKS (T)	FOOD UNIT	DEBBY BERDINE
DEPUTY	CHRIS WOODS (T)	7. Operations Section:	
SAFETY OFFICER	LEE OSTERLAND ; TERRY TRAPP KENT GLAZER (T)	FIELD OPS	CORY HENRY BRIAN WOLVERT (T)
INFORMATION OFFICER	CLARK MCCREEDY ; LARRY BICKEL ; BRIAN VANVICKLE	PLANNING OPS	KEITH MURPHY DARREN BRIDGES (T)
LIAISON OFFICER	RON ROBINSON ; CECILE STELTER	STRATEGIC OPS	JOE ALYEA
4. Agency/Organization Representative(s):		STAGING AREA	
Agency/Organization	Name		
USFS	RANDY SWICK HOLLY HAMPTON (T)	DIVISION/GROUP	A TODD WOOD JOSHUA STROHMEYER (T)
IDL	ANDREW SMYTH ERIK SJOQUIST	DIVISION/GROUP	K CARTWRIGHT
RESOURCE ADVISORS	WILL YOUNG ; MATT SLIFKO CHRIS ROBINSON (T)	DIVISION/GROUP	Z CHRIS WHITE
5. Planning Section:		DIVISION/GROUP	STRUCTURE STEVEN THIME
CHIEF	PETER FISCHER ; ROBBI MECUS AARON YOUNG (T)	DIVISION/GROUP	CONTINGENCY RUFUS DAVIS JR
SITUATION UNIT	BEN GARRETT THOMAS TARABELLI (T)	DIVISION/GROUP	NIGHT RUFUS DAVIS JR.
DOCUMENTATION UNIT	LISA SPIESS - V (T)	7b. Air Operations Branch:	
DEMOBILIZATION UNIT	GLENN PALMGREN	AIR OPS BRANCH DIRECTOR	JOHN FISH
FIRE BEHAVIOR ANALYST	BILL ANEY	AIR ATTACK SUPERVISOR	
INCIDENT METEOROLOGIST	SHANE EAGAN	AIR SUPPORT SUPERVISOR	CALEB SCHREIBER (T)
GIS SPECIALIST	PETER ROSE, JEFFREY SPROVKIN JUSTIN LAMOUNTAIN	HELICOPTER COORDINATOR	
TECHNOLOGY SUPPORT SPECIALIST	JOHN COSTELLO MARK ERICKSON (T)	AIR TANKER COORDINATOR	
RESOURCES UNIT	SUSAN THIEL BARRY REID (T), MATTHEW TONELLO (T)	8. Finance/Administration Section:	
6. Logistics Section:		CHIEF	MARY COLEMAN PETER BERINGER (V)
CHIEF	SCOTT CARRIGAN ; STEVE SCHUG	DEPUTY	
SUPPLY UNIT	BRYAN GALLAGHER	TIME UNIT	CAROLE WEIKLE (T)
FACILITIES UNIT	MARIA TORRES	PROCUREMENT UNIT	
GROUND SUPPORT UNIT	WILLARD STANLEY JR.	COMPENSATION UNIT	FARRAH SCALORA (V)
COMMUNICATIONS UNIT	ARNOLD IRVINE	COST UNIT	JENNIFER GALLAGHER (V)
MEDICAL UNIT	ROBERT WHITE ; MIKE PASSARELLI ROBERT EGGERT (T)		
ORDERING MGR	LAURIE MEADOWS (T)		
9. Prepared By:	Name: SUSAN THIEL	Position/Title: RESL	Signature:
ICS 203	IAP Page	Date/Time: 08/12/2023 1252	



INCIDENT Weather Forecast



Forecast No: 4
 Prediction For: Sunday
 Shift Date: August 13, 2023
 Forecast Issued: August 12, 2023 at 1800

Name of Incident: Ridge Creek
 Unit: Idaho Panhandle NF
 Incident Meteorologist: Shane Eagan

Discussion: Expect some lingering light NE flow across the fire today, although transport winds will be under 12 mph. Expect terrain/diurnal winds, especially in sheltered areas. A few gusts to 15 mph possible on ridges, exposed areas, and where terrain and ENE wind aligns. Heads up for hot and dry weather through the upcoming week.

Forecast for Today:

Sky/Weather:

Sunny, warmer, and dry.

	Ridge Creek ICP 2,400'	Ridge Creek 3,400'	Spades 4,600'	
Max Temperature:	91	85	81	°F
Min RH:	18-24	20-26	22-26	%
Wind (20 FT):	Expect a moderate morning inversion to begin mixing out after 0930; terrain flows dominate			
...	NE 8	US/UV 6	NE 7	mph
...	Gusts: 13	Gusts: 11	Gusts: 13	mph
Mixing Height:	6,000	6,500	6,500	ft AGL
LAL:	1	1	1	
Chance of Precipitation:	0	0	0	%
Tonight's Min Temperature:	53	59	62	°F
Tonight's Max RH:	70-75	45-52	43-48	%
Tonight's Wind (20 FT):	Diurnal flows; ENE flow at ridges, but overall winds highly variable			
...	E 4	DS/DV 3	E 3	mph
...	Gusts: 9	Gusts: 6	Gusts: 8	mph
Tonight's Mixing Height:	500	500	2,000	ft AGL
Tonight's LAL:	1	1	1	
Tonight's Chnc of Precip:	0	0	0	%

Forecast for Monday:

Excessive Heat Watch through Thursday

Sky/Weather:

Sunny, hot, and dry.

	Ridge Creek ICP 2,400'	Ridge Creek 3,400'	Spades 4,600'	
Max / Min Temperature:	96 59	90 64	86 67	°F
Min / Max RH:	20 68	20 48	22 42	%
Wind (20 FT):	Expect a moderate morning inversion to begin mixing out after 0930			
...	NW/Vrb 5	SSW 6	W 6	mph
...	Gusts: 10	Gusts: 10	Gusts: 10	mph
Mixing Height:	6,500	6,500	6,000	ft AGL
Haines Index:	4	LAL: 1	Precip Chance:	0

Extended Outlook:

Hot, dry, and increasing winds Tuesday through the end of the week. Temperatures will push 100F at camp, with Tuesday the hottest and driest day. Westerly winds will prevail with potential for increasing wind gust potential (18-20+ mph) Tuesday afternoon through the week.

		Max T	Min T	Min RH	Max RH	Ridge Winds @ 1500	Weather
Ridge Creek 3,400'	Tue:	94	68	18	42	SW @ 11 G20	Hot, dry, increased winds
	Wed:	90	65	20	45	W @ 12 G20	Hot, dry, breezy
	Thu:	89	65	22	44	SW @ 13 G22	Hot, dry, gusty

IRAWS 44 - Spades: Freq: 163.350, Tone: 0044

Please text weather obs to IMET (312-804-2926) or email shane.eagan@noaa.gov

FIRE BEHAVIOR FORECAST

FORECAST NUMBER: 5	INCIDENT TYPE: Wildland Fire
FIRE NAME: Ridge Creek	OPERATIONAL PERIOD: 0600 8/13/23 – 0600 8/14/23
DATE ISSUED: 8/12/2023	TIME ISSUED: 1200
UNIT: ID-IPF-000447	PREPARED BY: W.C. (Bill) Aney FBAN SIGNED: /s/ William C. Aney

INPUTS

WEATHER SUMMARY:

Continued warm and dry, with an easterly flow over the fire today but winds mostly diurnal terrain driven wind. Nighttime humidity recovery fair (50%) on ridges, good (70%) in valleys. More detail in fire weather forecast

FUELS & FUEL MOISTURE:

South and west facing slopes are the driest and most exposed to upslope/upvalley winds during the day, while the east slopes are more exposed to the easterly flow, especially at the upper elevations and ridgetops on the fire. Fuels continue to dry, expect short uphill runs on open slopes with single tree and small group torching possible. North and east slopes and heavier timber fuels (FM TU1) are slower to recover but expect plenty of smoldering and creeping ground fire to remain in these areas.

In the evening could get continued movement of fire downslope as easterly flow enhances the normal downslope diurnal flow, but this activity will drop off as humidity recovers throughout the night.

Daytime: Fine dead fuel moisture 5-8% Spotting distance .1-.3mi

OUTPUTS - FIRE BEHAVIOR

South slopes and ridges: expect spreading surface fire influenced by light upslope winds with little influence of easterly flow. Flashier fuels and timber litter carrying the fire with single tree and small group torching. Moderating fire behavior in the evening and through the night with cooler temps and fair humidity recovery.

North and east slopes, heavier canopy: Smoldering to slowly spreading fire, continued consumption of heavier fuels. Modeled results for TU1 are for higher elevations more exposed to east flow.

Fuel Type	Rate of Spread	Flame length	Prob Ignition	Spotting Distance
Grass/shrub/scattered timber (GS2) Head fire	18 ch/hr	4-5'	64%	.1mi
" Backing	1.3 ch/hr	1-2'		
Timber Understory (TU1) Head fire	2.1 ch/hr	.6'	42%	.3mi
" Backing	.4 ch/hr	.4'		

AIR OPERATIONS: Downslope morning winds enhanced by easterly flow will likely increase the amount of low level smoke on and west/south of the fire, potentially inhibiting visibility

SAFETY: The easterly flow could create some different conditions today as different areas are exposed to the light winds associated with this change. Continued hot and dry – are you packing enough water?

****Base all action on current and expected fire behavior****


DIVISION ASSIGNMENT LIST			1. Branch		2. Division A (Page 1 / 3)	
3. Incident Name RIDGE CREEK			4. Operational Period From: 08/13/2023 0600 To: 8/14/2023 0600			
5. Operations Personnel						
Field Operations Section Chief		Cory Henry/Brian Wolvert (T)		Branch Director		
Planning Operations Section Chief		Keith Murphy/Darren Bridges (T)		Division Supervisor		Todd Wood/Josh Strohmeier (T) 602-617-2017
6. Resources Assigned this Period						
RO#	Strike Team/Task Force/ Resource Designator	Leader	# People	LWD	Drop Off PT./Time	Pick Up PT./Time
C-20	CR2I Idaho Panhandle IHC	Sanders	21	8/25	ICP/0600	ICP/2200
C-7	CR2I Firestorm Wildland Fire NCC 7A	Norlie	20	8/21	ICP/0600	ICP/2200
C-11	CR2I Miller Timber	Yashima	20	8/22	ICP/0600	ICP/2200
C-16	CRW2 T2C214 Rocha Reforestation	Cruz	20	8/15	ICP/0600	ICP/2200
C-18	CRW2 T2C440 Alpine Services	Torres	20	8/27	ICP/0600	ICP/2200
O-98	FMOD Brothers Fire LLC.	Rosander	2	8/22	ICP/0600	ICP/2200
E-28	ENG6 IDIPF E81	Owens	6	8/19	ICP/0600	ICP/2200
E-50	ENG6 SGS North West LLC.	Sherlock	2	8/23	ICP/0600	ICP/2200
E-51	ENG6 SGS North West LLC.	Sherlock	2	8/23	ICP/0600	ICP/2200
E-52	ENG6 Funk Fire	Funk	3	8/23	ICP/0600	ICP/2200
E-53	ENG6 Northwest Mgt	Flaten	3	8/21	ICP/0600	ICP/2200
E-59	ENG6 Solomon Fire Equip C66420	Wing	3	8/22	ICP/0600	ICP/2200
7. Control Operations: TASK - Continue to secure control line on South end of fire PURPOSE - Keep fire West of FSR 406 END STATE - Stop easterly progression of fire beyond FSR 406						
8. Special Instructions: Tactical firing operations may take place in order to maintain control objectives Review IWI protocol with all assigned resources Utilize field maps for drop points, safety zones, and potential helispots Ensure that comms are functional throughout the entire division. Maintain situational awareness around heavy equipment operations Local engines are also available for IA.						
9. Division/Group Communication Summary						
Communications Summary						
Channel	Function	RX Frequency	RX Tone	TX Frequency	TX Tone	
1 TAC 1	TAC	168.0500 N	110.9	168.0500 N	110.9	
6 MICA BLM Primary	CMD	164.5250 N	NONE	163.0250 N	100.0	
7 Monument FS Secondary	CMD	169.9250 N	107.2	165.5625 N	131.8	
8 Cedar Peak	CMD	170.9750 N	110.9	168.7000 N	110.9	
12 Air to Ground Primary	A/G	167.1250 N	NONE	167.1250 N	NONE	
13 AIR TO GROUND SECONDARY	A/G	166.6125 N	NONE	166.6125 N	NONE	
16 Air Guard	AIRGUARD	168.6250 N	NONE	168.6250 N	110.9	
Prepared by (Resource Unit Ldr(t)) Barry Reid				Date 08/12/2023	Time 2030	

DIVISION ASSIGNMENT LIST			1. Branch		2. Division A (Page 2 / 3)	
3. Incident Name RIDGE CREEK			4. Operational Period From: 08/13/2023 0600 To: 8/14/2023 0600			
5. Operations Personnel						
Field Operations Section Chief		Cory Henry/Brian Wolvert (T)		Branch Director		
Planning Operations Section Chief		Keith Murphy/Darren Bridges (T)		Division Supervisor		Todd Wood/Josh Strohmeier (T) 602-617-2017
6. Resources Assigned this Period						
RO#	Strike Team/Task Force/ Resource Designator	Leader	# People	LWD	Drop Off PT./Time	Pick Up PT./Time
E-3	WTS2 St. Florian	Martin	1	8/17	ICP/0600	ICP/2200
E-4	WTS2 Martin	Madden	2	8/20	ICP/0600	ICP/2200
E-5	DZR2 Table Rock Forestry 200177	Cook	1	8/19	ICP/0600	ICP/2200
E-31	DZR2 Patrick Madden - S01069	Madden	2	8/20	ICP/0600	ICP/2200
E-8	EXC2 Fousts Inc 35616	Gatchell	1	8/24	ICP/0600	ICP/2200
E-32	EXC2 Altered Aspects, LLC - A85027	Lindsey	2	8/20	ICP/0600	ICP/2200
E-79	EXC2 J & P Idaho Services 2-1679	Kitchen	2	8/25	ICP/0600	ICP/2200
E-72	MBM1 Fousts C81065	Kramer	1	8/19	ICP/0600	ICP/2200
E-77	FEL1 Fousts A80052	Evans	1	8/24	ICP/0600	ICP/2200
O-32	TFLD	Taylor	1	8/22	ICP/0600	ICP/2200
O-33	TFLD(t)	Hurrell	1	8/22	ICP/0600	ICP/2200
O-35	TFLD	Jerman	1	8/21	ICP/0600	ICP/2200
7. Control Operations: TASK - Continue to secure control line on South end of fire PURPOSE - Keep fire West of FSR 406 END STATE - Stop easterly progression of fire beyond FSR 406						
8. Special Instructions: Tactical firing operations may take place in order to maintain control objectives Review IWI protocol with all assigned resources Utilize field maps for drop points, safety zones, and potential helispots Ensure that comms are functional throughout the entire division. Maintain situational awareness around heavy equipment operations Local engines are also available for IA.						
9. Division/Group Communication Summary						
Communications Summary						
Channel	Function	RX Frequency	RX Tone	TX Frequency	TX Tone	
1 TAC 1	TAC	168.0500 N	110.9	168.0500 N	110.9	
6 MICA BLM Primary	CMD	164.5250 N	NONE	163.0250 N	100.0	
7 Monument FS Secondary	CMD	169.9250 N	107.2	165.5625 N	131.8	
8 Cedar Peak	CMD	170.9750 N	110.9	168.7000 N	110.9	
12 Air to Ground Primary	A/G	167.1250 N	NONE	167.1250 N	NONE	
13 AIR TO GROUND SECONDARY	A/G	166.6125 N	NONE	166.6125 N	NONE	
16 Air Guard	AIRGUARD	168.6250 N	NONE	168.6250 N	110.9	
Prepared by (Resource Unit Ldr(t)) Barry Reid				Date 08/12/2023	Time 2030	

DIVISION ASSIGNMENT LIST			1. Branch		2. Division A (Page 3 / 3)	
3. Incident Name RIDGE CREEK			4. Operational Period From: 08/13/2023 0600 To: 8/14/2023 0600			
5. Operations Personnel						
Field Operations Section Chief		Cory Henry/Brian Wolvert (T)		Branch Director		
Planning Operations Section Chief		Keith Murphy/Darren Bridges (T)		Division Supervisor		Todd Wood/Josh Strohmeyer (T) 602-617-2017
6. Resources Assigned this Period						
RO#	Strike Team/Task Force/ Resource Designator	Leader	# People	LWD	Drop Off PT./Time	Pick Up PT./Time
O-111	TFLD (t)	Primmer	1	8/22	ICP/0600	ICP/2200
O-155	HEQB (t)	Vickers	1	8/25	ICP/0600	ICP/2200
O-89	HEQB	Schielke	1	8/24	ICP/0600	ICP/2200
O-90	HEQB (t)	Oikarinen	1	8/24	ICP/0600	ICP/2200
O-6.36	SOFR	Banaszak	1	8/24	ICP/0600	ICP/2200
O-19	EMTF Wilderness Medics	Axel	1	8/19	ICP/0600	ICP/2200
O-20	EMTF	Wolfstitch	1	8/20	ICP/0600	ICP/2200
7. 7. Control Operations: TASK - Continue to secure control line on South end of fire PURPOSE - Keep fire West of FSR 406 END STATE - Stop easterly progression of fire beyond FSR 406						
8. Special Instructions: Tactical firing operations may take place in order to maintain control objectives Review IWI protocol with all assigned resources Utilize field maps for drop points, safety zones, and potential helispots Ensure that comms are functional throughout the entire division. Maintain situational awareness around heavy equipment operations Local engines are also available for IA.						
9. Division/Group Communication Summary						
Communications Summary						
Channel	Function	RX Frequency	RX Tone	TX Frequency	TX Tone	
1 TAC 1	TAC	168.0500 N	110.9	168.0500 N	110.9	
6 MICA BLM Primary	CMD	164.5250 N	NONE	163.0250 N	100.0	
7 Monument FS Secondary	CMD	169.9250 N	107.2	165.5625 N	131.8	
8 Cedar Peak	CMD	170.9750 N	110.9	168.7000 N	110.9	
12 Air to Ground Primary	A/G	167.1250 N	NONE	167.1250 N	NONE	
13 AIR TO GROUND SECONDARY	A/G	166.6125 N	NONE	166.6125 N	NONE	
16 Air Guard	AIRGUARD	168.6250 N	NONE	168.6250 N	110.9	
Prepared by (Resource Unit Ldr(t)) <i>Barry Reid</i>				Date 08/12/2023	Time 1900	

DIVISION ASSIGNMENT LIST			1. Branch		2. Division K	
3. Incident Name RIDGE CREEK			4. Operational Period From: 08/13/2023 0600 To: 8/14/2023 0600			
5. Operations Personnel						
Field Operations Section Chief		Cory Henry/Brian Wolvert (T)		Branch Director		
Planning Operations Section Chief		Keith Murphy/Darren Bridges (T)		Division Supervisor		Beau Cartwright 970-846-7628
6. Resources Assigned this Period						
RO#	Strike Team/Task Force/ Resource Designator	Leader	# People	LWD	Drop Off PT./Time	Pick Up PT./Time
E-27	HETF Bonnalie Logging Task Force	Tippitt	8	8/20	ICP/0600	ICP/2200
	C-1 Mad River IHC	Esquivel	22	8/17		
O-91	TFLD(t)	Coppert	1	8/23	ICP/0600	ICP/2200
O-12	HEQB	Letscher	1	8/20	ICP/0600	ICP/2200
O-78	SOFR	O'Brien	1	8/24	ICP/0600	ICP/2200
O-101	EMPF	Hendron	1	8/24	ICP/0600	ICP/2200
7. Control Operations: TASK - Keep fire east of Sage Creek by constructing indirect fireline from the Div Z/K break to the North PURPOSE - To protect the Sage Creek area and prevent fire spread to the West END STATE - Control line established to meet the needs of the planned tactics.						
8. Special Instructions: Tactical firing operations may take place in order to maintain control objectives Review IWI protocol with all assigned resources Utilize field maps for drop points, safety zones, and potential helispots Ensure that communications are functional throughout the entire division Maintain Situational Awareness around heavy equipment operations						
9. Division/Group Communication Summary						
Communications Summary						
Channel	Function	RX Frequency	RX Tone	TX Frequency	TX Tone	
2 TAC2	TAC	168.2000 N	110.9	168.2000 N	110.9	
6' BLM MICA	CMD	164.5250 N	NONE	163.0250 N	100.0	
7' FS MONUMENT	CMD	169.9250 N	107.2	165.5625 N	131.8	
8 CEDAR PEAK	CMD	170.9750 N	110.9	168.7000 N	110.9	
12 AIR TO GROUND PRIMARY	A/G	167.1250 N	NONE	167.1250 N	NONE	
13 AIR TO GROUND SECONDARY	A/G	166.6125 N	NONE	166.6125 N	NONE	
16 AIR GUARD	A/G	168.6250 N	NONE	168.6250 N	110.9	
Prepared by (Resource Unit Ldr(t)) Barry Reid				Date 08/12/2023	Time 2030	

DIVISION ASSIGNMENT LIST			1. Branch		2. Division Z (Page 1 / 3)	
3. Incident Name RIDGE CREEK			4. Operational Period From: 08/13/2023 0600 To: 8/14/2023 0600			
5. Operations Personnel						
Field Operations Section Chief		Cory Henry/Brian Wolvert (T)		Branch Director		
Planning Operations Section Chief		Keith Murphy/Darren Bridges (T)		Division Supervisor		Chris White 541-517-6065
6. Resources Assigned this Period						
RO#	Strike Team/Task Force/ Resource Designator	Leader	# People	LWD	Drop Off PT./Time	Pick Up PT./Time
C-1	CRW1 Mad River IHC	Gill	22	8/17	ICP/0600	ICP/2200
C-5	CRW1 Klamath IHC	Owensbey	19	8/21	ICP/0600	ICP/2200
C-8	CRW1 Black Mountain IHC	Milligan	22	8/22	ICP/0600	ICP/2200
O-13	FMOD Bailey Fallers – MOD1	Newman	2	8/18	ICP/0600	ICP/0600
O-92	FMOD - White Horse Forestry, Inc.	Mehaffey	2	8/23	ICP/0600	ICP/2200
O-93	FMOD CZ Contracting	Babin	2	8/23	ICP/0600	ICP/2200
O-99	FMOD - Swedberg Contracting Corp.	Hileman	2	8/22	ICP/0600	ICP/2200
E-6	ENG6 NDND5 E5274	Mountain	4	8/19	ICP/0600	ICP/2200
	ENG6 IPF FS621	White	3		ICP/0600	ICP/2200
E-9	WTS2 Sagle FD 1271	Stuckey	2	8/18	ICP/0600	ICP/2200
E-1	DZR2 Fousts Inc N00574ZR2	Newcomer	1	8/17	ICP/0600	ICP/2200
E-78	EXC2 Foust 529581		1	8/23	ICP/0600	ICP/2200
7. Control Operations: TASK -Continue final preparations of primary and alternate control lines that have been established ensuring that the conditions of lines are adequate for the strategies proposed PURPOSE - Keep fire north of FSR 437 and east of the north fork of the Hayden Creek to protect private residences and industrial land to the southwest END STATE - Stop southerly and westerly progression of the fire beyond FSR 206						
8. Special Instructions: Tactical firing operations may take place in order to maintain control objectives Review IWI protocol with all assigned resources Utilize field maps for drop points, safety zones, and potential helispots Ensure that comms are functional throughout the entire division. Maintain Situational Awareness around heavy equipment operations.						
9. Division/Group Communication Summary						
Communications Summary						
Channel	Function	RX Frequency	RX Tone		TX Frequency	TX Tone
3 TAC 3	TAC	168.6000 N	110.9		168.6000 N	110.9
6 MICA BLM	COMMAND	164.5250 N	NONE		163.0250 N	100.0
7 Monument FS-Secondary	COMMAND	169.9250 N	107.2		165.5625 N	131.8
8 Cedar Peak	CMD	170.9750 N	110.9		168.7000 N	110.9
12 Air to Ground Primary	A/G	167.1250 N	NONE		167.1250 N	NONE
13 AIR TO GROUND SECONDARY	A/G	166.6125 N	NONE		166.6125 N	NONE
16 Air Guard	AIRGUARD	168.6250 N	NONE		168.6250 N	110.9
Prepared by (Resource Unit Ldr(t)) Barry Reid				Date 08/12/2023		Time 1900

DIVISION ASSIGNMENT LIST			1. Branch		2. Division Z (Page 2 / 3)	
3. Incident Name RIDGE CREEK			4. Operational Period From: 08/13/2023 0600 To: 8/14/2023 0600			
5. Operations Personnel						
Field Operations Section Chief		Cory Henry/Brian Wolvert (T)		Branch Director		
Planning Operations Section Chief		Keith Murphy/Darren Bridges (T)		Division Supervisor		Chris White 541-517-6065
6. Resources Assigned this Period						
RO#	Strike Team/Task Force/ Resource Designator	Leader	# People	LWD	Drop Off PT./Time	Pick Up PT./Time
E-68	LOGL Tracked Log Loader	Hester	2	8/26	ICP/0600	ICP/2200
E-2	EXC2 Foust 35653	Kramer	1	8/17	ICP/0600	ICP/2200
E-7	GRD1 Foust Inc. L00652	Ktamer	1	8/18	ICP/0600	ICP/2200
E-25	HETF Akre Logging Akre 1	Akre	7	8/20	ICP/0600	ICP/2200
E-23	VUTV D1 CDA River - Gator				ICP/0600	ICP/2200
E-60	DUMP Joe Hester Logging	Irvine	1	8/23	ICP/0600	ICP/2200
E-61	FRNT Joe Hester Logging	Schopp	1	8/23	ICP/0600	ICP/2200
E-69	LOGT Akre Logging 		2	8/23	ICP/0600	ICP/2200
E-71	LOGT Akre Logging	Rudolph	1		ICP/0600	ICP/2200
E-73	LOGP Akre Logging		2	8/23	ICP/0600	ICP/2200
7. Control Operations:						
TASK -Continue final preparations of primary and alternate control lines that have been established ensuring that the conditions of lines are adequate for the strategies proposed						
PURPOSE - Keep fire north of FSR 437 and east of the north fork of the Hayden Creek to protect private residences and industrial land to the southwest						
END STATE - Stop southerly and westerly progression of the fire beyond FSR 206						
8. Special Instructions:						
Tactical firing operations may take place in order to maintain control objectives						
Review IWI protocol with all assigned resources						
Utilize field maps for drop points, safety zones, and potential helispots						
Ensure that comms are functional throughout the entire division.						
Maintain Situational Awareness around heavy equipment operations.						
9. Division/Group Communication Summary						
Communications Summary						
Channel	Function	RX Frequency	RX Tone	TX Frequency	TX Tone	
3 TAC 3	TAC	168.6000 N	110.9	168.6000 N	110.9	
6 MICA BLM	COMMAND	164.5250 N	NONE	163.0250 N	100.0	
7 Monument FS-Secondary	COMMAND	169.9250 N	107.2	165.5625 N	131.8	
8 Cedar Peak	CMD	170.9750 N	110.9	168.7000 N	110.9	
12 Air to Ground Primary	A/G	167.1250 N	NONE	167.1250 N	NONE	
13 AIR TO GROUND SECONDARY	A/G	166.6125 N	NONE	166.6125 N	NONE	
16 Air Guard	AIRGUARD	168.6250 N	NONE	168.6250 N	110.9	
Prepared by (Resource Unit Ldr(t)) Barry Reid				Date 08/12/2023		Time 1730

DIVISION ASSIGNMENT LIST			1. Branch		2. Division Z (Page 3 / 3)	
3. Incident Name RIDGE CREEK			4. Operational Period From: 08/13/2023 0600 To: 8/14/2023 0600			
5. Operations Personnel						
Field Operations Section Chief		Cory Henry/Brian Wolvert (T)		Branch Director		
Planning Operations Section Chief		Keith Murphy/Darren Bridges (T)		Division Supervisor		Chris White 541-517-6065
6. Resources Assigned this Period						
RO#	Strike Team/Task Force/ Resource Designator	Leader	# People	LWD	Drop Off PT./Time	Pick Up PT./Time
O-66	TFLD	Schelin	1		ICP/0600	ICP/2200
O-37	TFLD (t)	Cobb	1	8/16	ICP/0600	ICP/2200
O-88	TFLD (t)	Mefford	1	8/22	ICP/0600	ICP/2200
O-2	HEQB	Hijos	1	8/17	ICP/0600	ICP/2200
O-25	HEQB	Rexrode	1	8/22	ICP/0600	ICP/2200
O-134	HEQB (t)	Schumacher	1	8/18	ICP/0600	ICP/2200
O-38	HEQB (t)	Hess	1	8/21	ICP/0600	ICP/2200
O-34	HEQB (t)	Harger	1	8/22	ICP/0600	ICP/2200
O-1.2	SOFR	Wurzauf	1	8/18	ICP/0600	ICP/2200
E-80	RAT MESU Kootenai Fire & Rescue	Miller	2	8/23	ICP/0600	ICP/2200
O-103	REMS MESU NIM Medical	Mason	4	8/23	ICP/0600	ICP/2200
7. Control Operations: TASK -Continue final preparations of primary and alternate control lines that have been established ensuring that the conditions of lines are adequate for the strategies proposed PURPOSE - Keep fire north of FSR 437 and east of the north fork of the Hayden Creek to protect private residences and industrial land to the southwest END STATE - Stop southerly and westerly progression of the fire beyond FSR 206						
8. Special Instructions: Tactical firing operations may take place in order to maintain control objectives Review IWI protocol with all assigned resources Utilize field maps for drop points, safety zones, and potential helispots Ensure that comms are functional throughout the entire division. Maintain Situational Awareness around heavy equipment operations.						
9. Division/Group Communication Summary						
Communications Summary						
Channel	Function	RX Frequency	RX Tone		TX Frequency	TX Tone
3 TAC 3	TAC	168.6000 N	110.9		168.6000 N	110.9
6 MICA BLM	COMMAND	164.5250 N	NONE		163.0250 N	100.0
7 Monument FS-Secondary	COMMAND	169.9250 N	107.2		165.5625 N	131.8
8 Cedar Peak	CMD	170.9750 N	110.9		168.7000 N	110.9
12 Air to Ground Primary	A/G	167.1250 N	NONE		167.1250 N	NONE
13 AIR TO GROUND SECONDARY	A/G	166.6125 N	NONE		166.6125 N	NONE
16 Air Guard	AIRGUARD	168.6250 N	NONE		168.6250 N	110.9
Prepared by (Resource Unit Ldr(t)) Barry Reid				Date 08/12/2023		Time 1900

DIVISION ASSIGNMENT LIST			1. Branch		2. Division		
3. Incident Name			4. Operational Period				
RIDGE CREEK			From: 08/13/2023 0600 To: 8/14/2023 0600				
5. Operations Personnel							
Field Operations Section Chief		Cory Henry/Brian Wolvert (T)		Branch Director			
Planning Operations Section Chief		Keith Murphy/Darren Bridges (T)		Division Supervisor		Steven Thime-STPS 719-660-5567	
6. Resources Assigned this Period							
RO#	Strike Team/Task Force/ Resource Designator	Leader	# People	LWD	Drop Off PT./Time	Pick Up PT./Time	
O-109	FOBS	Parker	1	8/26	ICP/0600	ICP/2200	
7. Control Operations: TASK - Coordinate with interagency cooperators for structure protection planning PURPOSE - Develop cohesive strategies amongst responding and coordinating agencies END STATE - Structure protection plan developed by all cooperators that can be easily implemented							
8. Special Instructions: Utilize field maps Be aware of traffic along roadways							
9. Division/Group Communication Summary							
Communications Summary							
Channel	Function	RX Frequency	RX Tone	TX Frequency	TX Tone		
4 TAC 4	TAC	166.7250 N	110.9	166.7250 N	110.9		
6 BLM MICA	CMD	164.5250 N	NONE	163.0250 N	100.0		
7 FS MONUMENT	CMD	169.9250 N	107.2	165.5625 N	131.8		
8 CEDAR PEAK	CMD	170.9750 N	110.9	168.7000 N	110.9		
12 AIR TO GROUND PRIMARY	A/G	167.1250 N	NONE	167.1250 N	NONE		
13 AIR TO GROUND SECONDARY	A/G	166.6125 N	NONE	166.6125 N	NONE		
16 AIR GUARD	AIRGUARD	168.6250 N	NONE	168.6250 N	110.9		
Prepared by (Resource Unit Ldr(t))				Date	Time		
Barry Reid				08/12/2023	2030		

DIVISION ASSIGNMENT LIST			1. Branch		2. Division Contingency - Unstaffed	
3. Incident Name RIDGE CREEK			4. Operational Period From: 08/13/2023 0600 To: 8/14/2023 0600			
5. Operations Personnel						
Field Operations Section Chief		Cory Henry/Brian Wolvert (T)		Branch Director		
Planning Operations Section Chief		Keith Murphy/Darren Bridges (T)		Division Supervisor		
6. Resources Assigned this Period						
RO#	Strike Team/Task Force/ Resource Designator	Leader	# People	LWD	Drop Off PT./Time	Pick Up PT./Time
7. Control Operations:						
8. Special Instructions:						
9. Division/Group Communication Summary						
Communications Summary						
Channel	Function	RX Frequency	RX Tone	TX Frequency	TX Tone	
5 TAC 5	TAC	166.7750 N	110.9	166.7750 N	110.9	
6 BLM MICA	COMMAND	164.5250 N	NONE	163.0250 N	100.0	
7 FS MONUMENT	COMMAND	169.9250 N	107.2	165.5625 N	131.8	
8 CEDAR PEAK	COMMAND	170.9750 N	110.9	168.7000 N	110.9	
12 AIR TO GROUND PRIMARY	A/G	167.1250 N	NONE	167.1250 N	NONE	
13 AIR TO GROUND SECONDARY	A/G	166.6125 N	NONE	166.6125 N	NONE	
16 Air Guard	AIRGUARD	168.6250 N	NONE	168.6250 N	110.9	
Prepared by (Resource Unit Ldr(t)) <i>Barry Reid</i>				Date 08/12/2023	Time 2030	

DIVISION ASSIGNMENT LIST			1. Branch		2. Division Night	
3. Incident Name RIDGE CREEK			4. Operational Period From: 08/13/2023 0600 To: 8/14/2023 0600			
5. Operations Personnel						
Field Operations Section Chief		Cory Henry/Brian Wolvert (T)		Branch Director		
Planning Operations Section Chief		Keith Murphy/Darren Bridges (T)		Division Supervisor		Rufus Davis 352-427-0929
6. Resources Assigned this Period						
RO#	Strike Team/Task Force/ Resource Designator	Leader	# People	LWD	Drop Off PT./Time	Pick Up PT./Time
E-54	ENG6 Castle Mountain D83273	Tsosie	3	8/22	ICP/1800	ICP/0600
E-55	ENG6 Bakken Robert	Bakken	3	8/22	ICP/1800	ICP/0600
E-56	ENG6 Flathead Fire	Leffler	3	8/22	ICP/1800	ICP/0600
E-57	ENG6 Castle Mountain C19623	Cork	3	8/23	ICP/1800	ICP/0600
E-58	ENG6 Starkcorp B40745	Hawley	3	8/23	ICP/1800	ICP/0600
O-96	EMPF	Allen	1	8/24	ICP/1800	ICP/0600
7. Control Operations: TASK - Monitor fire behavior from a safe vantage point and take appropriate suppression action if safe to do so. PURPOSE - Observe and report any fire movement that threatens the control lines. END STATE - Ensure fire remains inside established control lines.						
8. Special Instructions: Prior to 2200, utilize Ridge Creek communications for IWI. After 2200 utilize Coeur d' Alene dispatch for IWI. Ensure that comms are functional throughout the entire group. Ridge Creek communications will shut down at 2200 hours and communications will switch to Coeur d Alene Dispatch at 2200 hours utilizing Channel 7 Monument FS CMD Limit driving along mountainous roads. IMT night contact is Planning Operations Section Chief						
9. Division/Group Communication Summary						
Communications Summary						
Channel	Function	RX Frequency	RX Tone	TX Frequency	TX Tone	
5 TAC 5	TAC	166.7750 N	110.9	166.7750 N	110.9	
6 BLM MICA	COMMAND	164.5250 N	NONE	163.0250 N	100.0	
7 FS MONUMENT	COMMAND	169.9250 N	107.2	165.5625 N	131.8	
8 CEDAR PEAK	COMMAND	170.9750 N	110.9	168.7000 N	110.9	
12 AIR TO GROUND PRIMARY	A/G	167.1250 N	NONE	167.1250 N	NONE	
13 AIR TO GROUND SECONDARY	A/G	166.6125 N	NONE	166.6125 N	NONE	
16 Air Guard	AIRGUARD	168.6250 N	NONE	168.6250 N	110.9	
Prepared by (Resource Unit Ldr(t)) <i>Barry Reid</i>				Date 08/12/2023		Time 2030

AIR OPERATIONS SUMMARY 220		Prepared By: John Fish		Prepared: 08/12/2023		Prepared Time: 1530 hrs.	
INCIDENT NAME: Ridge Creek Fire		OPERATIONAL PERIOD 8/13/23		START TIME 0900	END TIME 2000	SUNRISE 0540	SUNSET 2003

REMARKS	MEDICAL RESPONSE AIRCRAFT
- All aircraft orders thru Air Attack if on scene, otherwise thru AOBDD (cell phone) - Large Electric Transmission Line through center of fire area	TFR Ridge Creek 3/8181 8,000 feet MSL. * Follow Medical Plan ICS-206 * 0700 – 2100 Hours

PERSONNEL	NAME	PHONE #	FREQUENCIES	AM	FM	FIXED-WING Avail/Type/Make-Model/N#/Base
AOBD	John Fish	850-843-0977	A/G PRI		167.1250	ATGS Platforms: N76WA Call Sign – AA 104
ASGS(T)	Caleb Schreiber	503-501-7572	A/G SEC		166.6125	F/W Bases: Coeur d'Alene Airport (COE)
ATGS ATGS(T)	Matt Counts Sam Bullington	406-270-7437 406-547-4416	A/G Firing		169.5000	R/W Bases: Coeur d'Alene Airport (COE) Sand Point
						Air Tankers LATs – T105 & T132 SEATs – FB-205, FB-206, FB-217, FB-219

HELICOPTERS

FAA N#	TY	MAKE/ MODEL	BASE	START	AVAIL	REMARKS	FAA N#	TY	MAKE/ MODEL	BASE	START	AVAIL	REMARKS
N258PJ	1	CH-47D	COE	0800	0900	Bucket	N777TD	3	B407	COE	0800	0900	Bucket/Recon
N214B	1	B214	Sand Point	0800	0900	Bucket							
N214KA	2	B212	COE	0800	0900	Bucket							
N28HX	2	B205+	COE	0800	0900	Bucket/Rappel							
N102RF	3	AS350B2	COE	0800	0900	Bucket/Recon							

**Ridge Creek Fire
EA Silver Team Phone List**

Position	Name	Cell
Incident Commander	Steve Miller	414-308-6861
Deputy Incident Commander (trainee)	Chris Woods	573-315-8394
Incident Commander (trainee)	Maris Gabliks	609-235-7524
Safety Officer	Lee Osterland	231-357-7381
Safety Officer	Terry Trapp	715-610-3695
Safety Officer (trainee)	Kent Glazer	715-340-0891
Safety Officer Line	Tim Banaszak	715-412-0322
Safety Officer Line	Sean Obrien	732-690-9715
Safety Officer Line	Doug Wurzauf	208-691-7977
Fire Information	FireNet	208-953-7022
Public Information Officer	Clark McCreedy	989-292-9373
Public Information Officer	Brian VanVickle	815-994-8522
Liaison Officer	Ron Robinson	612-860-1257
Liaison Officer	Cecile Stelter	814-688-7133
Operations Section Chief	Keith Murphy	906-250-1382
Operations Section Chief	Cory Henry	906-280-4144
Strategic Operations	Joe Alyea	509-671-1610
Air Operations Branch Director	John Fish	850-843-0977
Planning Section Chief	Robbi Mecus	518-524-6622
Planning Section Chief	Peter Fischer	304-618-9083
Planning Section Chief (trainee)	Aaron Young	608-558-5844
Logistics Section	General	208-891-6611
Medical Unit Leader	Robert White	715-415-2400
Medical Unit Leader	Mike Passarelli	330-633-0547
Medical Unit Leader (trainee)	Robert Eggert	708-691-2313
Communications Unit	Arnold Irvine	814-730-0389
Finance Section	FireNet	208-510-5158

INCIDENT RADIO COMMUNICATIONS PLAN ICS-205-OS

1. Incident Name: Ridge Creek Fire

2. Date/Time Prepared: Date: 08/12/23 Time: 1100

3. Operational Period: DAY SHIFT Date/Time From: 08/13/23 0600 Date/Time To: 08/14/23 0600

4. Basic Radio Channel Use:

Zone Group	Ch #	Function	Channel Name	Assignment	RX Freq	RX Tone/NAC	TX Freq	TX Tone/NAC	Mode (A, D, or M)	Remarks
1	1	TACTICAL	TAC 1	DIV A	168.0500 N	110.9	168.0500 N	110.9	A	
1	2	TACTICAL	TAC 2	DIV K	168.2000 N	110.9	168.2000 N	110.9	A	
1	3	TACTICAL	TAC 3	DIV Z	168.6000 N	110.9	168.6000 N	110.9	A	
1	4	TACTICAL	TAC 4	STRUCTURE GROUP	166.7250 N	110.9	166.7250 N	110.9	A	
1	5	TACTICAL	TAC 5	CONTINGENCY GROUP/Night	166.7750 N	110.9	166.7750 N	110.9	A	
1	6	COMMAND	MICA/BLM	ALL D IVS	164.5250 N	NONE	163.0250 N	100.0	A	BLM MICA RPTR
1	7	COMMAND	MONUMENT	ALL DIVS	169.9250 N	107.2	165.5625 N	131.8	A	FS MONUMENT SECONDARY
1	8	COMMAND	CEDAR PK	ALL DIVS	170.9750 N	110.9	168.7000 N	110.9	A	Cedar peak primary
1	12	TACTICAL	AIR TO GROUND PRIMARY	All Divs	167.1250 N	NONE	167.1250 N	NONE	A	A/G PRIMARY
1	13	TACTICAL	AIR TO GROUND SECONDARY	All Divs	166.6125 N	NONE	166.6125 N	NONE	A	A/G SECONDARY
1	14	EMS	EMS	EMS 2	155.2800 N	NONE	155.2800 N	156.7	A	EMS 2
1	16	AIR GUARD	AIRGUARD	ALL DIVS	168.6250 N	NONE	168.6250 N	110.9	A	EMERGENCY CALL TO AIRCRAFT

5. Special Instructions:

6. Prepared By Communications Unit Leader **Name:** : ARNIE IRVINE **Signature:** /s/ Arnie Irvine

Date/Time 8/12/23 1100

MEDICAL PLAN (ICS 206 WF)

Controlled Unclassified Information//Basic

1. Incident/Project Name		2. Operational Period					
Ridge Creek Fire		Date/Time 0600 – 0600		8/13/2023 to 8/14/2023			
3. Ambulance Services							
Name	Complete Address	Phone & EMS Frequency	Advanced Life Support (ALS) Yes No				
Timber Lake Fire Protection	5984 E Highway 54 Athol Id 54 west of 95	208-772-3283	<input type="checkbox"/>	<input checked="" type="checkbox"/>			
Kootenai County EMS	4381 W. Seltice Way CDA, ID	208-930-4224	<input checked="" type="checkbox"/>	<input type="checkbox"/>			
4. Air Ambulance Services							
Name	Phone	Type of Aircraft & Capability					
Life Flight	Hayden or Sandpoint ID	208-772-3283					
Short Haul or Hoist	Through Coeur d Alene Dispatch	208-772-3283					
Agency Helo	USFS Coeur d Alene Dispatch	208-772-3283					
5. Hospitals							
Name Complete Address	GPS Datum – WGS 84 Coordinate Standard Degrees Decimal Minutes DD° MM.MMM' N - Lat DD° MM.MMM' W - Long		Travel Time Air Gnd		Phone	Helipad Yes No	Level of Care Facility
	Lat:	47 45.658 N	15 min	30 min	208-625-4000	<input checked="" type="checkbox"/> <input type="checkbox"/>	Level 2 Trauma
Kootenai General Hospital Coeur d'Alene	Long:	116 47 41.684W					
	VHF:						
	Lat:	48 16.650	15 min	60 min	208-263-1441	<input checked="" type="checkbox"/> <input type="checkbox"/>	Level 4 Trauma
Bonner General Hospital Sandpoint, ID	Long:	116 32.92					
	VHF:						
	Lat:	47 38.500	25 min	120 min	509-474-3131	<input checked="" type="checkbox"/> <input type="checkbox"/>	Level 2 Trauma
Sacred Heart Medical	Long:	117 24.800					
	VHF:						
	Lat:	47 36.238	120 min	300 min	206-744-3074 206744-5735 Burn center #	<input checked="" type="checkbox"/> <input type="checkbox"/>	Level 1 Trauma & Burn Center
Harbour View Medical Center	Long:	122 19.461					
	VHF:						
	Lat:	47.950879		10 min	208-561-9970	<input type="checkbox"/> <input checked="" type="checkbox"/>	Urgent care only Hours: 0800-1800 M-F 0800-1600 S-S
Northwest Urgent Care 7173 E Super 1 Loop Suite A Athol, ID Intersection of 54 &95	Long:	-116.694570					
6. Division Branch Group		Area Location Capability					
A	Point of Contact:		Lisa Axel (612) 532-5181 EMTF & Steve Wolfstitch EMTF (520)508-9807				
	EMS Responders & Capability:		BLS				
	Equipment Available on Scene:		BLS				
	ETA for Ambulance to Scene:						
	Air:		40min				
	Ground:		10 min to the Alpha/Zulu Break				
	Approved Helispot:		H-90		H-70		
	Lat:		N47 49.490		N47 50.335		
	Long:		116 35.685		116 33.685		
	K	Point of Contact:		EMPF (Henderson) (443)851-7014			
EMS Responders & Capability:		ALS					
Equipment Available on Scene:		ALS					
ETA for Ambulance to Scene:							
Air:							
Ground:							
Approved Helispot: H-50		LAT: 47 51.757N Long: 116 33.295'W					

MEDICAL PLAN (ICS 206 WF)

Controlled Unclassified Information//Basic

1. Incident/Project Name	2. Operational Period		
Z	Point of Contact:	REM (Mason) (605) 545-4293 & RAT (Blasick) (208) 869-2657	
	EMS Responders & Capability:	RAT & ALS	
	Equipment Available on Scene:	REM & RAT	
	ETA for Ambulance to Scene:		
	Air:	40 min	
	Ground:	10 min to the Alpha/Zulu break	
	Approved Helispot:	H-10 H-40	
	Lat: N47 49.300	N47 49.300 47 52.793N	
	Long: 116 39.650	116 39.650 116 36.954'W	
	Contingency	Point of Contact:	EMPF (Allen) (208) 403-9937
EMS Responders & Capability:			
Equipment Available on Scene:			
ETA for Ambulance to Scene:			
Air:			
Ground:			
Approved Helispot:			
Lat:			
Long:			
Structure Protection		Point of Contact:	UNSTAFFED
	EMS Responders & Capability:		
	Equipment Available on Scene:		
	ETA for Ambulance to Scene:		
	Air:		
	Ground:		
	Approved Helispot:		
	Lat:		
	Long:		
	NIGHT OPS	Point of Contact:	EMPF (Allen) (208) 403-9937
EMS Responders & Capability:		ALS	
Equipment Available on Scene:		ALS	
ETA for Ambulance to Scene:			
Air:			
Ground:			
Approved Helispot:			
Lat:			
Long:			
7. Prepared By (Medical Unit Leader)		8.	9. Reviewed By (Safety Officer)
Mike Passarelli MEDL <i>Mike Passarelli MEDL</i>		Lee Osterland <i>Lee Osterland</i>	8/12/23 1700

Safety Message

Incident:
Ridge Creek

Date:
8/13/2023

Shift:
Day

Common Tactical Hazards (IRGP pg 4)

When selected tactics put firefighters in these positions or situations, a higher level of risk is involved. Fireline supervisors need to consider additional hazard controls. Firefighters are empowered to discuss their concerns with fireline supervisors.

Position:

- Building fireline downhill.
- Building undercut or mid-slope fireline
- Building indirect fireline or unburned fuel between you and the fire.
- Attempting frontal assault on fire or you are delivered by aircraft to the top of the fire.
- Establishing escape routes that are uphill or difficult to travel.

Situation

- Poor communications due to a rapidly emerging small fire or isolated area of large fire.
- Suppression resources are fatigued or inadequate.
- Assignment of escape routes depends on aircraft support.
- Nighttime operations.
- Wildland Urban Interface operations.



EA Silver Team Safety Group: Lee Osterland (SOFC), Terry Trapp (SOF2), Kent Glazer (SOFCT) Tim Banasz (SOFR), Sean O'Brien (SOFRT), Doug Wurzauf (SOFR)

EA Silver Team Safety Group:
Lee Osterland (SOFC), Terry Trapp (SOF2), Kent Glazer (SOFCT) Tim Banasz (SOFR), Sean O'Brien (SOFRT), Doug Wurzauf (SOFR)

WORKING NEAR STREAMS

Value At Risk: Hayden Creek and Hayden Lake Water Quality

Water Drafting



Divert water from creeks at low rates to avoid significantly reducing instream flow.

ALWAYS use ¼" or smaller screen intakes to avoid killing small fish.

Use portable collapsible tanks for out-of-stream storage.

Have spill kits, extra containment pads and tarps with all pumps; store fuel and oils within a containment area away from the water's edge.

Dozers Near Water

- Ask yourself how "YOU" are going to rehab the fireline to pre-fire condition as it is being built.
- Scout line locations before fireline construction.
- Carefully scout and select dozer creek crossings where there are gentle and/or hardened banks.
- When crossing streams, ALWAYS lift the blade. Lay 6-8" diameter trees in the stream and drive/walk equipment across them to avoid damaging the channel banks and bed.
- Handle, store, and dispense fuel and other chemicals at least 50' from streams.





Finance Message

Finance Phone # (208) 510-5158 (Voice only. No Text)

Finance Email: 2023.ridgecreek.finance@firenet.gov

SUBJECT: *Include Key Word **TIME** for Overhead, Crews & Cooperators*

SUBJECT: *Include Key Word **EQUIPMENT** for Contract*

FINANCE CHECK IN:

2023.ridgecreek.finance@firenet.gov

PLEASE ENSURE THE BELOW DOCUMENTS ARE EMAILED

Overhead, Crews & Cooperator Resources	Contract Resources
<ul style="list-style-type: none"> • Check-In: Crew Manifest, Cooperative Agreement (if applies), AD Hire Letter, Resource Order • Daily: Crew Time Report (CTR), Shift Tickets 	<ul style="list-style-type: none"> • Check-In: Resource Order, Contract/VIPR Agreement (make sure you have your UEI, Pre-Inspection • Daily: Shift Tickets, receipts (fuel issues, claims, etc.)

REMINDERS

★ WE WILL BE COMPLETELY DIGITAL ON THIS INCIDENT. IF YOU NEED ASSISTANCE, PLEASE CONTACT FINANCE AT (208) 510-5158 or 2023.ridgecreek.finance@firenet.gov

- ★ PLEASE MAKE SURE C OR E # IS ON THE CTR OR SHIFT TICKET
- ★ PLEASE SHOW YOUR LUNCH BREAK
- ★ PLEASE USE MILITARY TIME (0001-2400)
- ★ WHEN CLAIMING HAZARD PAY YOU MUST INCLUDE THE SUPPRESSION ACTION BEING PERFORMED. THIS INCLUDES OPERATIONS WHICH DIRECTLY SUPPORT CONTROL OF FIRE (E.G., ACTIVITIES TO EXTINGUISH THE FIRE, FIREFIGHTING, GROUND SCOUTING, SPOT FIRE PATROLLING, SEARCH AND RESCUE OPERATIONS, AND BACKFIRING).
- ★ WHEN SIGNING YOUR OF-288 or OF-286 PLEASE DO NOT LOCK IT or PROTECT THE SIGNATURE, WE HAVE TO BE ABLE TO SIGN IT AND SEND YOU A COPY

For assistance with CLAIMS please call (208) 510-5158 or submit a request to the finance email inbox, subject comp/claims.

CHECK-IN PROCEDURE

1. Scan the QR code on the cover of the IAP and click the Check-in button
 - o If you have questions, visit Check-In in the Plans yurt at ICP and we can assist you with the virtual form, or call 208-891-6074
2. Check in with Finance – see the Finance page

DEMOB PROCEDURE

- ** If you need a flight arranged, visit Demob (in the Plans yurt) 72 hours prior to your anticipated demob time to provide flight request information. If you can't visit in person, call 208-891-6074.
- ** If you are on the Tentative Release list below and you don't think you should be, contact your supervisor first to discuss, and then visit or call Demob.

How to demob:

1. If you are not on the Tentative Release list below, your section chief needs to submit a 213 to Demob to release you at least 24 hours in advance (72 hours if flight is needed).
2. At your scheduled release date/time listed below, visit Demob in the Plans yurt at ICP. The Demob process is mostly in person (not virtual) at this time. However, anyone who needs to demob remotely (if you cannot come to ICP) can call 208-891-6074.

TENTATIVE RELEASE

08/13/2023

O-6.65 1900 GISS SPROVKIN, JEFFREY

08/14/2023 & 08/15/2023 - None

LOGISTICS SERVICE HOURS

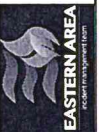
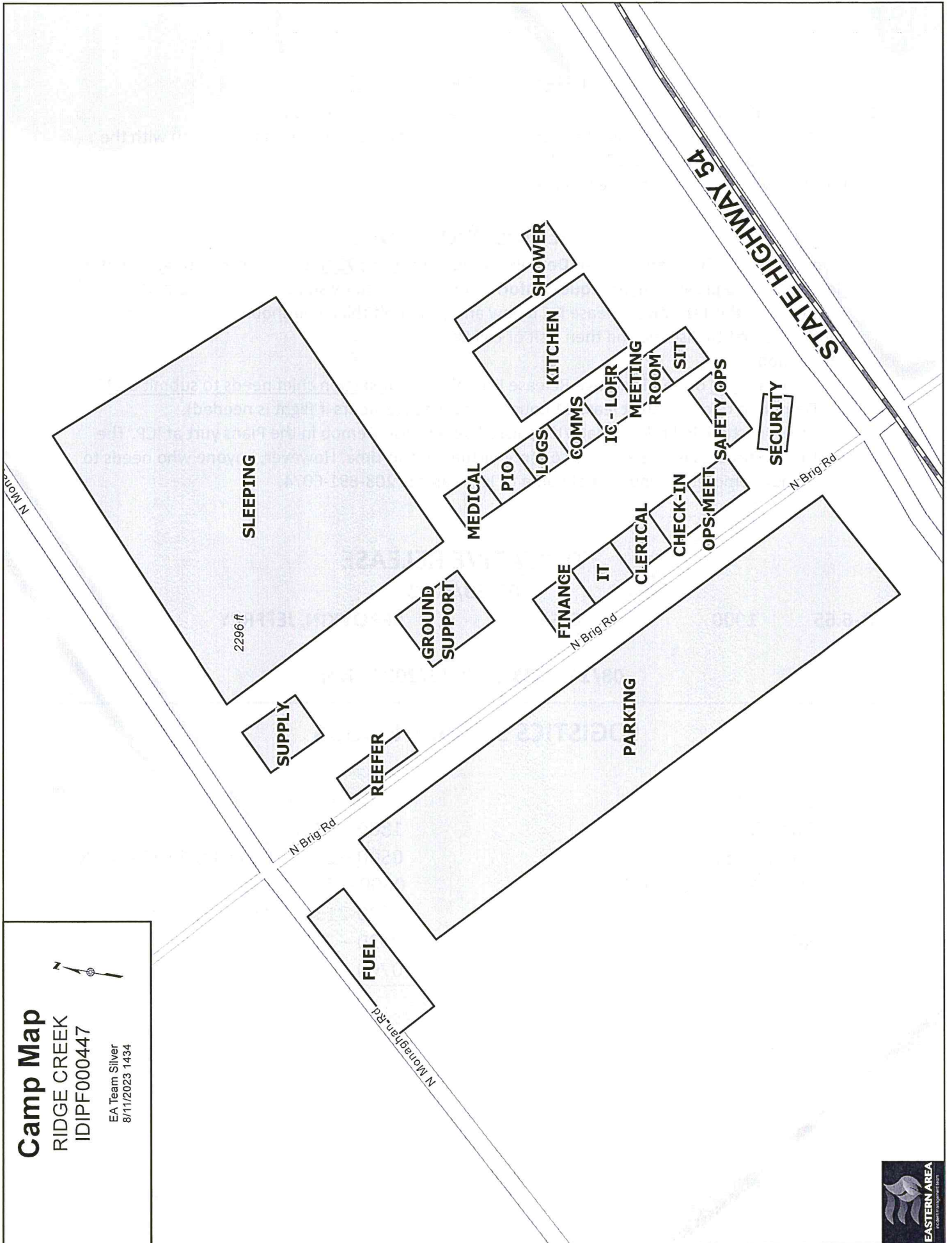
BREAKFAST:	0530 – 0830
DINNER:	1800 – 2130
SHOWERS:	0500 – 2200 (CLOSED 1100 – 1300)
SUPPLY & GROUND SUPPORT:	0600 – 2130
FUELS:	0600-2130 (CLOSED 1300-1500)
REEFER:	0530 – 2130
ORDERING:	0700 – 2000

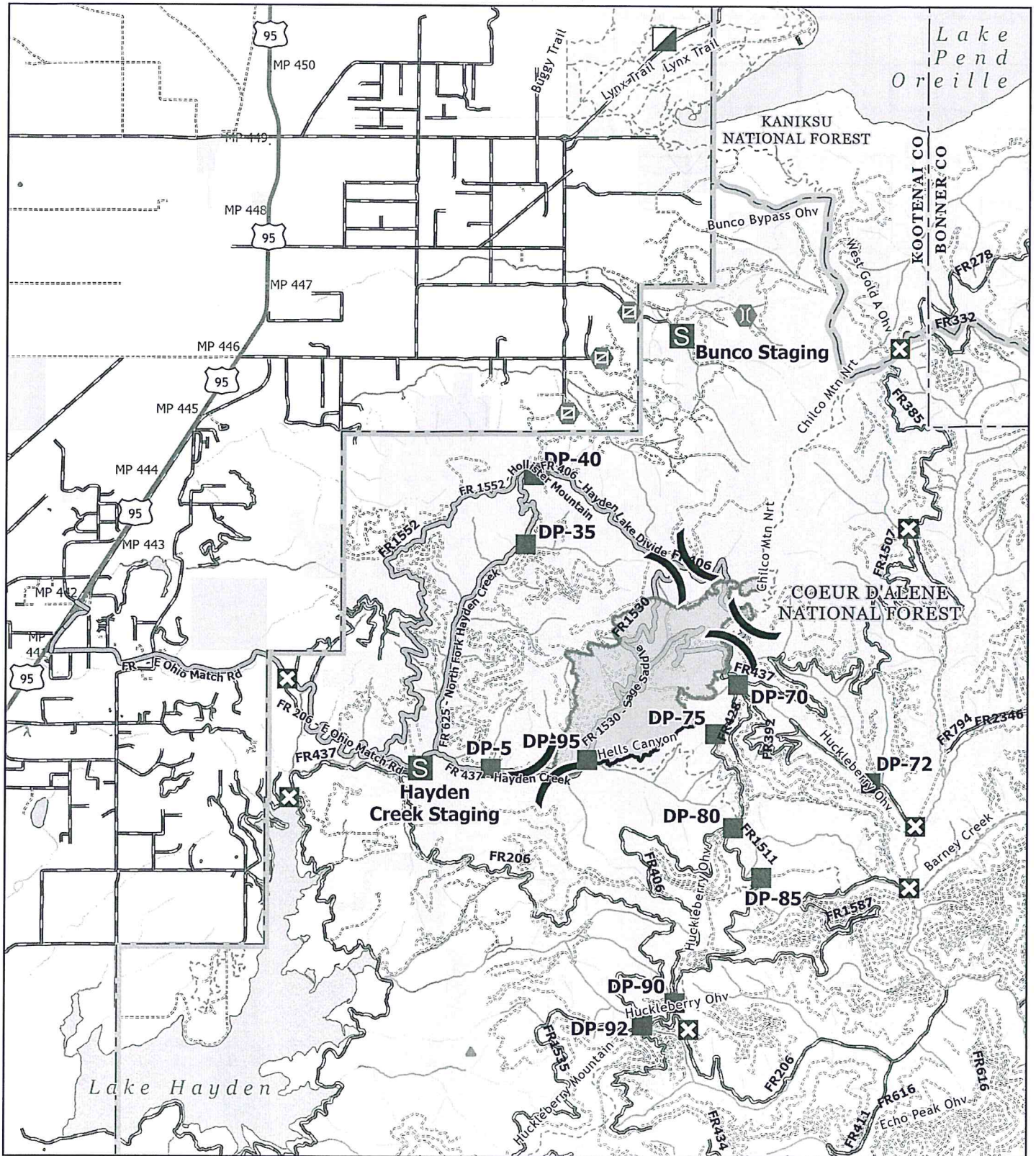
- PLEASE camp only in Team designated areas!

Camp Map

RIDGE CREEK
IDIPF000447

EA Team Silver
8/11/2023 1434





RIDGE CREEK
IDIPF000447

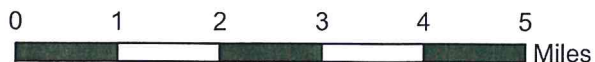
2417 acres
8/11/2023 @ 2251 hrs
North American 1983 Datum. LatLong Grid

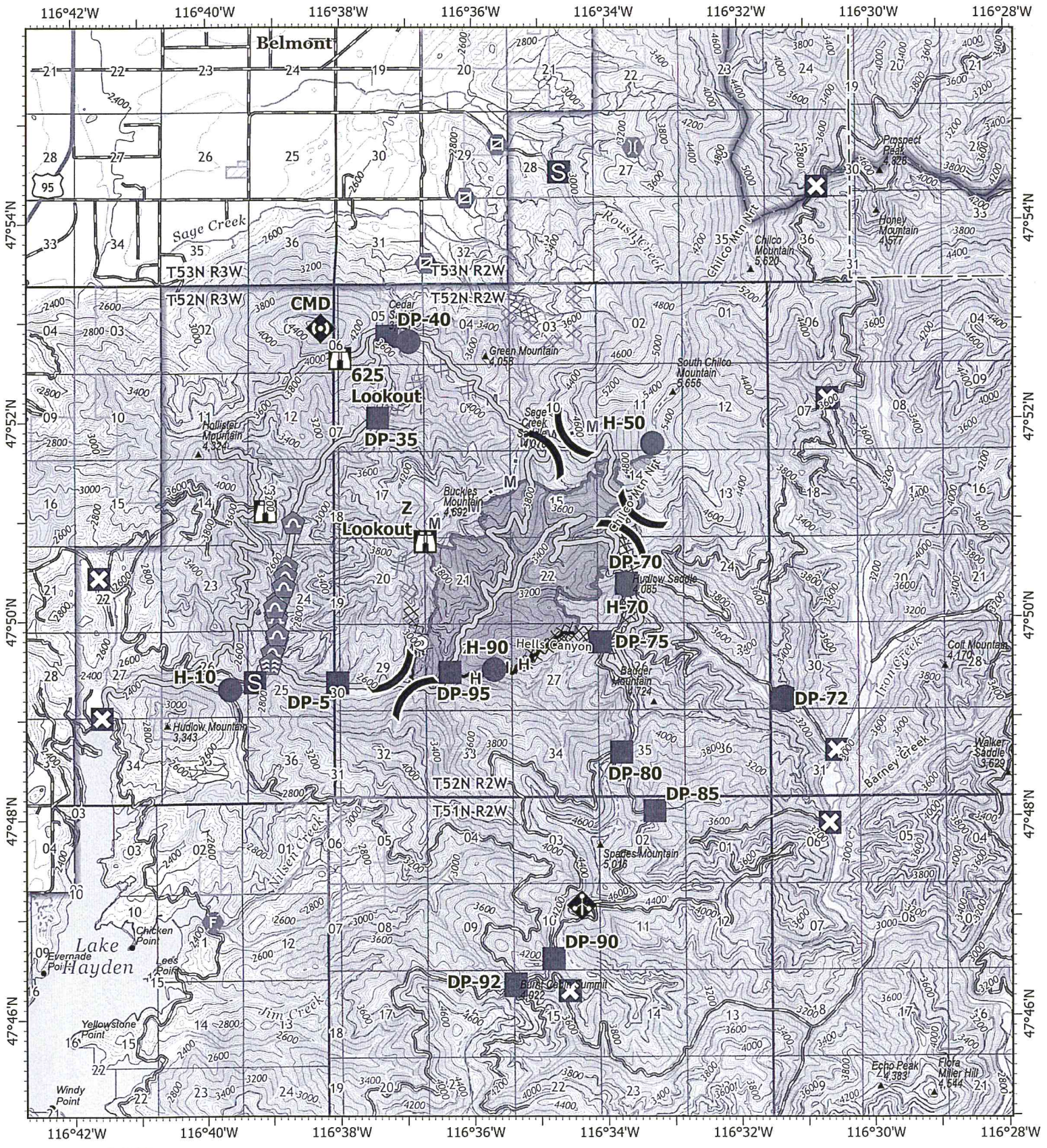
- Main Access Roads
- Unimproved Road
- Improved Road
- Division Break
- Incident Command Post

- Drop Point
- Closure
- Staging Area
- Gate

- Bridge
- Bureau of Land Management (BLM)
- State
- US Forest Service (USFS)

- Contained
- Uncontained
- Wildfire Daily Fire Perimeter





IAP
RIDGE CREEK
IDIPF000447
08/13/2023 Day

2417 acres at 8/11/2023 @ 2251 hrs
 Acres from IR



- | | | | |
|------------------------|-----------------------|-----------------------------------|---------------------------------|
| ● Helispot | ⊠ Gate | ⊠ Completed Dozer Line | Bureau of Land Management (BLM) |
| ⊠ Division Break | ⊠ Fire Station | ⊠ Completed Hand Line | State |
| ■ Drop Point | ⊠ Bridge | ⊠ Planned Dozer Line | US Forest Service (USFS) |
| ⊠ Closure | ⊠ Stream Crossing | ⊠ Planned Mixed Construction Line | Private |
| ⊠ Staging Area | ⊠ Culvert | ⊠ Access or Improved Road | Undetermined |
| ⊠ Lookout | ⊠ Mobile Weather Unit | ⊠ Contained | |
| ⊠ Hot Spot - Spot Fire | ⊠ Repeater | ⊠ Uncontained | |
| ⊠ Value at Risk | ⊠ Water Source | ⊠ Wildfire Daily Fire Perimeter | |



MEDICAL PLAN (ICS 206a WF)

Controlled Unclassified Information//Basic

Medical Incident Report					
FOR A NON-EMERGENCY INCIDENT, WORK THROUGH CHAIN OF COMMAND TO REPORT AND TRANSPORT INJURED PERSONNEL AS NECESSARY.					
FOR A MEDICAL EMERGENCY: IDENTIFY ON SCENE INCIDENT COMMANDER BY NAME AND POSITION AND ANNOUNCE "MEDICAL EMERGENCY" TO INITIATE RESPONSE FROM IMT COMMUNICATIONS/DISPATCH.					
Use the following items to communicate situation to communications / dispatch.					
1. CONTACT COMMUNICATIONS / DISPATCH (Verify correct frequency prior to starting report) <i>Ex: "Communications, Div. Alpha. Stand-by for Emergency Traffic."</i>					
2. INCIDENT STATUS: Provide incident summary (including number of patients) and command structure. <i>Ex: "Communications, I have a Red priority patient, unconscious, struck by a falling tree. Requesting air ambulance to Forest Road 1 at (Lat./Long.) This will be the Trout Meadow Medical, IC is TFLD Jones. EMT Smith is providing medical care."</i>					
Severity of Emergency / Transport Priority	<input type="checkbox"/> RED / PRIORITY 1 Life or limb threatening injury or illness. Evacuation need is IMMEDIATE <i>Ex: Unconscious, difficulty breathing, bleeding severely, 2°- 3° burns more than 4 palm sizes, heat stroke, disoriented.</i> <input type="checkbox"/> YELLOW / PRIORITY 2 Serious Injury or illness. Evacuation may be DELAYED if necessary. <i>Ex: Significant trauma, unable to walk, 2°- 3° burns not more than 1-3 palm sizes.</i> <input type="checkbox"/> GREEN / PRIORITY 3 Minor Injury or illness. Non-Emergency transport <i>Ex: Sprains, strains, minor heat-related illness.</i>				
Nature of Injury or Illness & Mechanism of Injury			Brief Summary of injury or illness <i>(Ex: Unconscious, Struck by Falling Tree)</i>		
Transport Request			Air Ambulance / Short Haul / Hoist Ground Ambulance / Other		
Patient Location			Descriptive Location & Lat. Long (WGS84)		
Incident Name			Geographic Name + "Medical" <i>(Ex: Trout Meadow Medical)</i>		
On-Scene Incident Commander			Name of on-scene IC of incident within an Incident <i>(Ex: TFLD Jones)</i>		
Patient Care			Name of Care Provider <i>(Ex: EMT Smith)</i>		
3. INITIAL PATIENT ASSESSMENT: Complete this section for each patient as applicable (start with the most severe patient)					
Patient Assessment: See IRPG Page 106					
Treatment:					
4. TRANSPORT PLAN:					
Evacuation Location (if different): (Descriptive Location (drop point, intersection, etc.) or Lat. / Long.) Patient's ETA to Evacuation Location:					
Helispot / Extraction Site Size and Hazards:					
5. ADDITIONAL RESOURCES / EQUIPMENT NEEDS:					
<i>Example: Paramedic/EMT, Crews, Immobilization Devices, AED, Oxygen, Trauma Bag, IV/Fluid(s), Splints, Rope rescue, Wheeled litter, HAZMAT, Extrication</i>					
6. COMMUNICATIONS: Identify State Air/Ground EMS Frequencies and Hospital Contacts as applicable					
Function	Channel Name/Number	Receive (RX)	Tone/NAC *	Transmit (TX)	Tone/NAC *
COMMAND					
AIR-TO-GRND					
TACTICAL					
7. CONTINGENCY: <u>Considerations:</u> If primary options fail, what actions can be implemented in conjunction with primary evacuation method? Be thinking ahead.					
8. ADDITIONAL INFORMATION: Updates/Changes, etc.					
REMEMBER: Confirm ETA's of resources ordered. Act according to your level of training. Be Alert. Keep Calm. Think Clearly. Act Decisively.					