

8/17/23

0900

CORRECTED
Ridge Creek

Incident Action Plan

Thursday, August 17, 2023, 0600 -

Friday, August 18, 2023, 0600



Photo courtesy of PIO Brian VanVickle

ID-IPF-000447

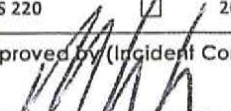
P1QG9D (0104)



QR Code to download:

IAP, Maps, CTR/EST, Incident Emails,
Demob Flight Requests

<https://linktr.ee/2023ridgecreek>

INCIDENT OBJECTIVES	1. Incident Name Ridge Creek Fire	2. Date August 16, 2023	3. Time 1830
4. Operational Period: Thursday, August 17, 2023 0600-2200			
5. General Control Objectives for the Incident <ul style="list-style-type: none"> • Provide for the protection of firefighter and public safety by implementing a course of action that achieves incident objectives while minimizing firefighter exposure, mitigating public safety issues, and is based on sound risk management principles. • Protect infrastructure, private residences, private inholdings and businesses in the planning area from negative impacts by fire and mitigating smoke impacts when possible. This includes private inholdings and residences east of Hayden Lake and Hudlow Warming Hut. • Minimize fire suppression impacts and fire effects on the watersheds of Hayden Creek and Hayden Lake and the associated Riparian Habitat Conservation Areas (RHCA). • Minimize fire impacts to timber values on private industrial timber lands and National Forest System lands. This includes Bottom Canyon and other planned timber sales and existing plantations. • Minimize fire impacts to the Bonneville Power Administration Transmission lines north of the current fire area. • Ensure active communications of fire status, planned management actions, and predicted fire behavior to Bonneville Power Administration so that the appropriate actions can be taken to manage the transmission lines. • Use a deliberative risk management process that mitigates risk to firefighting resources and the public while pursuing a course of action to achieve incident objectives. Protection of human life is the highest priority on all actions. <ul style="list-style-type: none"> ○ Develop a population protection plan for private inholdings and residences east of Hayden Lake. Coordinate with Kootenai County Emergency Management and Bonner County as appropriate ○ Coordinate with the Kootenai County Sheriff on emergency evacuation plans as needed. ○ Implement and maintain any road, trail, or area closures for public safety as needed. • Build and maintain a high degree of trust with our partners, cooperators, stakeholders, and forest visitors by providing accurate, timely and well distributed information sharing. • In addition to incident specific objectives and requirements, follow direction in strategic objectives and requirements found in the Ridge Creek WFDSS decision 			
5b. Incident Commander's Intent <ol style="list-style-type: none"> 1. To create an environment free of harassment of any kind. My goal is to create a workplace where employees would feel comfortable if their family members and loved ones worked there too. 2. Prioritized values at risk are: <ul style="list-style-type: none"> • Private property and residences • Hayden Creek and Hayden Lake Water Quality • Industrial timber lands and Bottom Canyon Timber Sales (Idaho Forest Group) and other planned timber sales • Bonneville Power Administration Transmission Line • Hudlow Warming Hut • Plantations 			
6. Weather Forecast & General Safety Message for Period – See Attached			
7. Attachments (mark if attached)			
<input checked="" type="checkbox"/> Organization List - ICS 203	<input checked="" type="checkbox"/> Weather Forecast	<input checked="" type="checkbox"/> Message: Safety, Finance, Plans	
<input checked="" type="checkbox"/> Div. Assignment Lists - ICS 204	<input checked="" type="checkbox"/> Fire Behavior Forecast	<input checked="" type="checkbox"/> Message: Logs, READ	
<input checked="" type="checkbox"/> Communications Plan - ICS 205	<input checked="" type="checkbox"/> Incident Map	<input checked="" type="checkbox"/> Transport Map + Hudlow Direction	
<input checked="" type="checkbox"/> Medical Plan - ICS 206	<input checked="" type="checkbox"/> Air Operations– ICS 220	<input checked="" type="checkbox"/> 205a, 214, 206a	
9. Prepared by (Planning Section Chief) Aaron Young – PSC(T)	9. Approved by (Incident Commander) IC 		

CORRECTIONS

ORGANIZATION ASSIGNMENT LIST (ICS 203)

1. Incident Name: RIDGE CREEK		2. Operational Period: Date From: 08/17/23 Time From: 0600		Date To: 08/18/23 Time To: 0600	
3. Incident Commander(s) and Command Staff:			7. Operations Section:		
IC/UC	STEVE MILLER; MARIS GABLIKS(T)		Field Operations	CORY HENRY*; BRIAN WOLVERT(T)	
DEPUTY	CHRIS WOODS *(T)		Planning Operations	KEITH MURPHY; DARREN BRIDGES (T)	
Safety Officer	LEE OSTERLAND; TERRY TRAPP; KENT GLAZER (T)		Strategic Operations	JOE ALYEA	
Information Officer	CLARK MCCREEDY; LARRY BICKEL; BRIAN VANVICKLE		Staging Area		
Liaison Officer	RON ROBINSON; CECILE STELTER		Divisions:		
4. Agency/Organization Representatives:			Division/Group	A	TODD WOOD; JOSH STROHMEYER (T)
Agency/Organization	Name		Division/Group	K	BEAU CARTWRIGHT
USFS	RANDY SWICK; HOLLY HAMPTON(T)		Division/Group	Z	CHRIS WOOD WHITE
IDL	ANDREW SMYTH; ERIK SJOQUIST		Division/Group	STRUCTURE	STEVEN THIME
RESOURCE ADVISORS	WILLYOUNG; MATT SLIFKO; CHRIS ROBINSON		Division/Group	NIGHT	RUFUS DAVIS JR
5. Planning Section:			7b. Air Operations Branch		
Chief	PETER FISCHER; ROBBI MECUS* AARON YOUNG (T)		Branch Director	JOHN FISH	
Resources Unit	SUSAN THIEL; BARRY REID (T); MATTHEW TONELLO (T)		Air Support Supervisor	CALEB SCHREIBER (T)	
Situation Unit	BEN GARRETT; THOMAS TARABELLI (T)		8. Finance/Administration Section:		
Incident Meteorologist	SHANE EAGAN		Chief	MARY COLEMAN; PETER BERINGER-V	
Fire Behavior Analyst	BILL ANEY		Deputy		
GIS Specialist	PETER J. ROSE; JUSTIN LAMOUNTAIN		Time Unit	CAROLE WEIKLE (T)	
Documentation Unit	LISA SPIESS (T)-V		Compensation Claims	FARRAH SCALORA-V	
Demobilization Unit	GLENN PALMGREN (T)		Cost Unit	JENNIFER GALLAGHER-V	
Technology Support Specialist	JOHN COSTELLO; MARK ERICKSON* (T)		Hudlow Base Camp Organizational List:		
6. Logistics Section:			IC: Chris Woods (T)		
Chief	SCOTT CARRIGAN; STEVE SCHUG		PSC: Robbi Mecus		
Supply Unit	JOEL CLARK		OPS: Cory Henry		
Facilities Unit	LESTER KAISER		ITSS/EMTB: Mark Erickson(T)		
Ordering Manager	CHRIS ADAMCZYK-V; LAURIE MEADOWS (T)		BCMG: Andrew Kenyon, Tim Crowell (T)		
Ground Support Unit	WILLARD STANLEY JR.		GSUL: Lindsay Larson (T)		
BCMG	TIM GALLAGHER (T)		EQPM: Kyle Magee (T)		
Security Unit	MARK WARMERDAM		SOFR2: Terry Trapp		
			*- Located at Hudlow Base Camp		
9. Prepared by: Name: Susan J Thiel _____ Position/Title: RESL _____ Signature: <i>Susan J Thiel</i> _____					
ICS 203	IAP Page _____				



INCIDENT Weather Forecast



Forecast No: 8
 Prediction For: Thursday
 Shift Date: August 17, 2023
 Forecast Issued: August 16, 2023 at 1800

Name of Incident: Ridge Creek
 Unit: Idaho Panhandle NF
 Incident Meteorologist: Shane Eagan

Discussion: Critical fire weather today and Friday. Today will be hot, dry, and windy. Southwest winds will increase after 1000-1200 hours, sustained 8-14 mph with gusts 20-28 mph. Slightly cooler Friday, but winds will be stronger.

Forecast for Today:

RED FLAG WARNING 1000-2100

Sky/Weather:

Increasing clouds, hot, dry, and windy

	Ridge Creek ICP 2,400'	Ridge Creek 3,400'	Spades 4,600'	
Max Temperature:	98	93	88	°F
Min RH:	14-19	14-19	15-19	%
Wind (20 FT):	Expect a moderate morning inversion to begin mixing out after 0900-1000; winds increase after 1100			
...	SW 11	SW 12	SW 13	mph
...	Gusts: 22	Gusts: 23	Gusts: 25	mph
Mixing Height:	8,500	8,000	8,000	ft AGL
Haines Index:	4	4	4	
LAL:	1	1	1	
Chance of Precipitation:	0	0	0	%
Tonight's Min Temperature:	60	66	71	°F
Tonight's Max RH:	55-60	42-50	38-45	%
Tonight's Wind (20 FT):	SW winds remain elevated overnight, especially slope/wind align and ridges			
...	SSW 8	SW 8	SW 9	mph
...	Gusts: 20	Gusts: 20	Gusts: 20	mph
Tonight's Mixing Height:	500	500	1,000	ft AGL
Tonight's LAL:	1	1	1	
Tonight's Chnc of Precip:	0	0	0	%

Forecast for Friday:

RED FLAG WARNING 1000-2100

Sky/Weather:

Not as hot, very dry, partly cloudy, and windy

	Ridge Creek ICP 2,400'	Ridge Creek 3,400'	Spades 4,600'	
Max / Min Temperature:	88 50	83 54	79 56	°F
Min / Max RH:	17 50	18 40	18 35	%
Wind (20 FT):	Stronger southwesterly winds persist through the day			
...	SW 16	SW 17	SW 16	mph
...	Gusts: 28	Gusts: 30	Gusts: 30	mph
Mixing Height:	9,500	9,000	9,000	ft AGL
Haines Index:	5	LAL: 1	Precip Chance: 5	

Extended Outlook:

Cooler weather expected Saturday into early next week. A few isolated showers/storms possible Saturday, although better chance for precipitation arrives late Sunday through Tuesday.

		Max T	Min T	Min RH	Max RH	Ridge Winds @ 1500	Weather
Ridge Creek 3,400'	Sat:	79	55	20	60	W @ 7 G18	Partly cloudy
	Sun:	78	56	30	78	NE @ 9 G18	Mostly cloudy, chance of rain
	Mon:	76	54	56	80	SW @ 12 G20	Cooler and rain chances

IRAWS 44 - Spades: Use freq 163.350, key mic, enter 0044 to get Wx
 Please text weather obs to IMET (312-804-2926) or email shane.eagan@noaa.gov

FIRE BEHAVIOR FORECAST

FORECAST NUMBER: 9	INCIDENT TYPE: Wildland Fire
FIRE NAME: Ridge Creek	OPERATIONAL PERIOD: 0600 8/17/23 – 0600 8/18/23
DATE ISSUED: 8/16/2023	TIME ISSUED: 1400
UNIT: ID-IPF-000447	PREPARED BY: W.C. (Bill) Aney FBAN SIGNED: /s/ William C. Aney

INPUTS

WEATHER SUMMARY:

Red Flag Warning in place for fire area.
Hot and dry weather with breezy WSW winds.
More detail in fire weather forecast.

Yesterday mid and low level smoke slowed the daytime heating and drying, with relative humidity hitting 20% around 1400hrs. Smoke from Oregon, California, and Canada fires may overlay our fire area again today until midday.

FUELS & FUEL MOISTURE:

Open west and south-facing slopes and ridges – GS2 fuel model. Open forest, fire carried by litter and grass with dry shrubs (oceanspray, ninebark, etc.). Fine dead fuel moisture 3%

Closed canopy forest – TU1 fuel model. More continuous canopy, ground fuels of compact litter layer, twigs, and branchwood. Fine dead fuel moisture higher (6%) due to greater shading.

Subalpine fir – at highest elevations in the fire area, both closed and open forest conditions (closed on north faces, open on upper south faces (South Chilco). Fire usually moves through torching and spotting from open-grown trees with little ground fire spread. Fine dead fuel moisture 5%

OUTPUTS - FIRE BEHAVIOR

Open west and south-facing slopes, ridges: expect spreading surface fire influenced by southwest winds, with uphill runs and small group torching and spotting up to .5mi. Expect a long burn period (starting early and ending late) due to continued poor overnight humidity recovery.

North and east slopes, heavier canopy: slower moving surface fire with some limited torching and medium-range spotting.

Subalpine fir: individual and small group torching with prolific ember production and downwind spotting.

Fuel Type	Rate of Spread	Flame length	Prob Ignition	Spotting Distance
Grass/shrub/scattered timber (GS2) Head fire	57 ch/hr	8'	88%	.5mi
Timber Understory (TU1)	11.4 ch/hr	3.5'	56%	.4mi
Subalpine fir (FM10 - torching)		9.5'	65%	.4mi
		*- exceeds capability of hand crews attempting direct head attack without support		

AIR OPERATIONS: Likely to have dirty air over fire area until mid-morning with combination of smoke transported from west and southwest and locally produced smoke below the morning inversion

SAFETY: Do you know where your safety zone is, and do you have a plan B? If a rapidly spreading fire cuts you off from your safety zone, where's your next spot? Does the rest of your crew know?

Base all action on current and expected fire behavior

DIVISION ASSIGNMENT LIST			1. Branch		2. Division A (Page 1 / 4)	
3. Incident Name RIDGE CREEK			4. Operational Period From: 08/17/2023 0600 To: 8/18/2023 0600			
5. Operations Personnel						
Field Operations Section Chief		Cory Henry/Brian Wolvert (T)		Branch Director		
Planning Operations Section Chief		Keith Murphy/Darren Bridges (T)		Division Supervisor		Todd Wood 602-617-2017 Josh Strohmeyer (T) 779-240-0194
6. Resources Assigned this Period						
RO#	Strike Team/Task Force/ Resource Designator	Leader	# People	LWD	Drop Off PT./Time	Pick Up PT./Time
C-7	CR21 Firestorm Wildland Fire NCC 7A	MacNorlie	20	8/21	Hudlow/0600	Hudlow/2200
C-11	CR21 Miller Timber	Yashima	20	8/22	Hudlow/0600	Hudlow/2200
C-25	CR21 Standing Rock	Hodgkiss	20	8/28	Hudlow/0600	Hudlow/2200
C-20	CRW1 Idaho Panhandle IHC	Sanders	21	8/25	Hudlow/0600	Hudlow/2200
C-18	CRW2 T2C440 Alpine Services	Torres	20	8/27	Hudlow/0600	Hudlow/2200
O-94	FMOD West Wood LLC	Arvish	2	8/22	Hudlow/0600	Hudlow/2200
O-98	FMOD Brothers Fire LLC.	Rosander	2	8/22	Hudlow/0600	Hudlow/2200
E-28	ENG6 ID-IPE 81	Owens	6	8/23	Hudlow/0600	Hudlow/2200
E-50	ENG6 SGS NORTH WEST LLC D34044	Sherlock	2	8/23	Hudlow/0600	Hudlow/2200
E-51	ENG6 SGS North West LLC A16185	Sherlock	2	8/23	Hudlow/0600	Hudlow/2200
E-52	ENG6 Funk Fire	Funk	3	8/23	Hudlow/0600	Hudlow/2200
E-53	ENG6 Northwest Mgt	Stutzman	3	8/20	Hudlow/0600	Hudlow/2200
7. Control Operations:						
TASK - Continue to secure control line on the entire division utilizing all forms of suppression tactics.						
PURPOSE - Keep fire west of FSR 406.						
END STATE - Stop easterly progression of fire beyond FSR 406.						
8. Special Instructions:						
Tactical and planned firing operations may take place in order to maintain control objectives.						
Review heat-related illness symptoms in the 2022 IRPG 110.						
Keep 3 to 1 water to Gatorade/Powerade ratio.						
Utilize field maps for drop points, safety zones, and potential helispots.						
Ensure that communications are functional throughout the entire division.						
Local engines are also available for IA.						
9. Division/Group Communication Summary						
Communications Summary						
Channel	Function	RX Frequency	RX Tone	TX Frequency	TX Tone	
1 TAC 1	TAC	168.0500 N	110.9	168.0500 N	110.9	
6 MICA BLM Primary	CMD	164.5250 N	NONE	163.0250 N	100.0	
7 FS Monument Secondary	CMD	169.9250 N	107.2	165.5625 N	131.8	
8 Cedar Peak	CMD	170.9750 N	110.9	168.7000 N	110.9	
9 A/G Ignition	TAC	169.5000 N	NONE	169.5000 N	NONE	
12 A/G Primary	A/G	167.1250 N	107.2	167.1250 N	NONE	
13 A/G SECONDARY	A/G	166.6125 N	NONE	166.6125 N	NONE	
16 Air Guard	AIRGUARD	168.6250 N	NONE	168.6250 N	110.9	
Prepared by (Resource Unit Ldr) Susan Thiel, RESL				Date 08/16/2023	Time 2030	

DIVISION ASSIGNMENT LIST		1. Branch	2. Division A (Page 2 / 4)			
3. Incident Name RIDGE CREEK		4. Operational Period From: 08/17/2023 0600 To: 8/18/2023 0600				
5. Operations Personnel						
Field Operations Section Chief	Cory Henry/Brian Wolvert (T)	Branch Director				
Planning Operations Section Chief	Keith Murphy/Darren Bridges (T)	Division Supervisor			Todd Wood 602-617-2017 Josh Strohmeyer (T) 779-240-0194	
6. Resources Assigned this Period						
RO#	Strike Team/Task Force/ Resource Designator	Leader	# People	LWD	Drop Off PT./Time	Pick Up PT./Time
E-59	ENG6 Solomon Fire Equip C66420	Wing	3	8/22	Hudlow/0600	Hudlow/2200
Local	ENG6 Ocala T7	O'Brien	3	na	Hudlow/0600	Hudlow/2200
E-3	WTS2 St Florian	Martin	1	8/21	Hudlow/0600	Hudlow/2200
E-4	WTS2 Craig Martin 492771	Madden	2	8/17	Hudlow/0600	Hudlow/2200
E-138	WTS2 St Regis VFD T7	Ahern	1	8/29	Hudlow/0600	Hudlow/2200
E-132	Wtt2 Tri-State Fire	Cruz	2	8/31	Hudlow/0600	Hudlow/2200
E-129	SKG1 Long SHot Logging	Eikert	2	8/28	Hudlow/0600	Hudlow/2200
E-31	DZR2 Patrick Madden S01069	Madden	2	8/20	Hudlow/0600	Hudlow/2200
E-133	DZR2 Chad Howell	Krista	2	8/27	Hudlow/0600	Hudlow/2200
E-32	XC2 Altered Aspects LLC A85027	Lindsey	2	8/20	Hudlow/0600	Hudlow/2200
E-8	EXC2 Fousts Inc. 35616	Gatchell	1	8/24	Hudlow/0600	Hudlow/2200
E-79	EXC2 J & P Idaho Services 2-1679	Kitchen	2	8/25	Hudlow/0600	Hudlow/2200
E-72	MBM1 Fousts C81065	Kramer	1	8/19	Hudlow/0600	Hudlow/2200
E-77	FEL1 Fousts A80052	Evans	1	8/24	Hudlow/0600	Hudlow/2200
7. Control Operations:						
TASK - Continue to secure control line on the entire division utilizing all forms of suppression tactics.						
PURPOSE - Keep fire west of FSR 406.						
END STATE - Stop easterly progression of fire beyond FSR 406.						
8. Special Instructions:						
Tactical and planned firing operations may take place in order to maintain control objectives.						
Review heat-related illness symptoms in the 2022 IRPG 110.						
Keep 3 to 1 water to Gatorade/Powerade ratio.						
Utilize field maps for drop points, safety zones, and potential helispots.						
Ensure that communications are functional throughout the entire division.						
Local engines are also available for IA.						
9. Division/Group Communication Summary						
Communications Summary						
Channel	Function	RX Frequency	RX Tone	TX Frequency	TX Tone	
1 TAC 1	TAC	168.0500 N	110.9	168.0500 N	110.9	
6 MICA BLM Primary	CMD	164.5250 N	NONE	163.0250 N	100.0	
7 FS Monument Secondary	CMD	169.9250 N	107.2	165.5625 N	131.8	
8 Cedar Peak	CMD	170.9750 N	110.9	168.7000 N	110.9	
9 A/G Ignition	TAC	169.5000 N	NONE	169.5000 N	NONE	
12 A/G Primary	A/G	167.1250 N	107.2	167.1250 N	NONE	
13 A/G SECONDARY	A/G	166.6125 N	NONE	166.6125 N	NONE	
16 Air Guard	AIRGUARD	168.6250 N	NONE	168.6250 N	110.9	
Prepared by (Resource Unit Ldr) Susan Thiel				Date 08/16/2023	Time 2030	

DIVISION ASSIGNMENT LIST			1. Branch		2. Division A (Page 3 / 4)	
3. Incident Name RIDGE CREEK			4. Operational Period From: 08/17/2023 0600 To: 8/18/2023 0600			
5. Operations Personnel						
Field Operations Section Chief		Cory Henry/Brian Wolvert (T)		Branch Director		
Planning Operations Section Chief		Keith Murphy/Darren Bridges (T)		Division Supervisor		Todd Wood 602-617-2017 Josh Strohmeyer(T) 779-240-0194
6. Resources Assigned this Period						
RO#	Strike Team/Task Force/ Resource Designator	Leader	# People	LWD	Drop Off PT./Time	Pick Up PT./Time
A-67	UAR3	Black	1			
O-32	TFLD	Taylor	1	8/22	Hudlow/0600	Hudlow/2200
O-33	TFLD(t)	Hurrell	1	8/22	Hudlow/0600	Hudlow/2200
O-35	TFLD	Jerman	1	8/21	Hudlow/0600	Hudlow/2200
O-111	TFLD (t)	Primmer	1	8/22	Hudlow/0600	Hudlow/2200
O-89	HEQB	Schielke	1	8/24	Hudlow/0600	Hudlow/2200
O-90	HEQB(t)	Oikarinen	1	8/24	Hudlow/0600	Hudlow/2200
O-115	HEQB(t)	Vickers	1	8/25	Hudlow/0600	Hudlow/2200
O-139	SOFR	Chris OBrien	1	8/28	Hudlow /0600	Hudlow/2200
O-19	EMTF Wilderness Medics	Axel	1	8/20	Hudlow/0600	Hudlow/2200
O-171	EMPF Blacklands EMS Inc.	Keys	1	8/29	Hudlow/0600	Hudlow/2200
O-173	EMPF	Orde	1	8/30	Hudlow/0600	Hudlow/2200
7. Control Operations:						
TASK - Continue to secure control line on the entire division utilizing all forms of suppression tactics.						
PURPOSE - Keep fire west of FSR 406.						
END STATE - Stop easterly progression of fire beyond FSR 406.						
8. Special Instructions:						
Tactical and planned firing operations may take place in order to maintain control objectives.						
Review heat-related illness symptoms in the 2022 IRPG 110.						
Keep 3 to 1 water to Gatorade/Powerade ratio.						
Utilize field maps for drop points, safety zones, and potential helispots.						
Ensure that communications are functional throughout the entire division.						
Local engines are also available for IA.						
9. Division/Group Communication Summary						
Communications Summary						
Channel	Function	RX Frequency	RX Tone		TX Frequency	TX Tone
1 TAC 1	TAC	168.0500 N	110.9		168.0500 N	110.9
6 MICA BLM Primary	CMD	164.5250 N	NONE		163.0250 N	100.0
7 FS Monument Secondary	CMD	169.9250 N	107.2		165.5625 N	131.8
8 Cedar Peak	CMD	170.9750 N	110.9		168.7000 N	110.9
9 A/G Ignition	TAC	169.5000 N	NONE		169.5000 N	NONE
12 A-G Primary	A/G	167.1250 N	107.2		167.1250 N	NONE
13 A-G SECONDARY	A/G	166.6125 N	NONE		166.6125 N	NONE
16 Air Guard	AIRGUARD	168.6250 N	NONE		168.6250 N	110.9
Prepared by (Resource Unit Ldr) Susan Thiel				Date	08/16/2023	Time 1900

DIVISION ASSIGNMENT LIST			1. Branch		2. Division K	
3. Incident Name RIDGE CREEK			4. Operational Period From: 08/17/2023 0600 To: 8/18/2023 0600			
5. Operations Personnel						
Field Operations Section Chief		Cory Henry/Brian Wolvert (T)		Branch Director		
Planning Operations Section Chief		Keith Murphy/Darren Bridges (T)		Division Supervisor		Beau Cartwright 970-846-7628
6. Resources Assigned this Period						
RO#	Strike Team/Task Force/ Resource Designator	Leader	# People	LWD	Drop Off PT./Time	Pick Up PT./Time
C-23	CRW2 PR Reforestation C-9	Pantaleon	20	8/28	ICP/0600	ICP/2200
O-93	FMOD CZ Contracting	Babin	2	8/23	ICP/0600	ICP/2200
O-99	FMOD - Swedberg Contracting Corp.	Hileman	2	8/22	ICP/0600	ICP/2200
E-160	ENG6 C2M2	Hauge	3	8/29	ICP/0600	ICP/2200
E-27	HETF Bonnalie Logging Task Force	Tipitt	8	8/20	ICP/0600	ICP/2200
E-78	EXC2 Fousts Inc.	Unesh	1	8/23	ICP/0600	ICP/2200
E-124	MBM2 West Wood	West	1	8/27	ICP/0600	ICP/2200
O-91	TFLD(t)	Coppert	1	8/23	ICP/0600	ICP/2200
O-12	HEQB	Letscher	1	8/20	ICP/0600	ICP/2200
O-78	SOFR	Sean O'Brien	1	8/24	ICP/0600	ICP/2200
O-101	EMPF	Hendron	1	8/24	ICP/0600	ICP/220
O-174	EMPF Minutemans	Kemmerer	1	8/29	ICP/0600	ICP/220
7. Control Operations: TASK - Keep fire east of Sage Creek by constructing indirect fire line from the Div Z/K break to the north utilizing FS 406U. PURPOSE - To protect the Sage Creek area and prevent fire spread to the west. END STATE - Control line established to meet the needs of the planned tactics.						
8. Special Instructions: Tactical firing operations may take place in order to maintain control objectives. Review heat-related illness symptoms in 2022 IRPG page 110. Keep 3 to 1 water to Gatorade/Powerade ratio. Utilize field maps for drop points, safety zones, and potential helispots. Ensure that communications are functional throughout the entire division.						
9. Division/Group Communication Summary						
Communications Summary						
Channel	Function	RX Frequency	RX Tone	TX Frequency	TX Tone	
2 TAC2	TAC	168.2000 N	110.9	168.2000 N	110.9	
6 BLM MICA	CMD	164.5250 N	NONE	163.0250 N	100.0	
7 FS MONUMENT	CMD	169.9250 N	107.2	165.5625 N	131.8	
8 CEDAR PEAK	CMD	170.9750 N	110.9	168.7000 N	110.9	
12 AIR TO GROUND PRIMARY	A/G	167.1250 N	107.2	167.1250 N	NONE	
13 AIR TO GROUND SECONDARY	A/G	166.6125 N	NONE	166.6125 N	NONE	
16 AIR GUARD	A/G	168.6250 N	NONE	168.6250 N	110.9	
Prepared by (Resource Unit Ldr) Susan Thiel				Date 08/16/2023	Time 2030	

CORRECTIONS

DIVISION ASSIGNMENT LIST			1. Branch		2. Division Z (Page 1 / 4)	
3. Incident Name RIDGE CREEK			4. Operational Period From: 08/17/2023 0600 To: 8/18/2023 0600			
5. Operations Personnel						
Field Operations Section Chief		Cory Henry/Brian Wolvert (T)		Branch Director		
Planning Operations Section Chief		Keith Murphy/Darren Bridges (T)		Division Supervisor		Chris White 541-517-6065
6. Resources Assigned this Period						
RO#	Strike Team/Task Force/ Resource Designator	Leader	# People	LWD	Drop Off PT./Time	Pick Up PT./Time
C-21	CRW1 Mad River IHC	Esquivel	22	8/17	ICP/0600	ICP/2200
C-8	CRW1 Black Mountain IHC	Gill	20	8/22	ICP/0600	ICP/2200
C-22	CRW2 Iron Mountain	Zavala	20	8/28	ICP/0600	ICP/2200
O-13	FMOD Bailey Fallers – MOD1	Newman	2	8/18	ICP/0600	ICP/0600
O-92	FMOD - White Horse Forestry, Inc.	Mehaffey	2	8/23	ICP/0600	ICP/2200
E-6	ENG6 NDNDS E5274	Mountain	4	8/19	ICP/0600	ICP/2200
	ENG6 IPE F5641	White	3	8/29	ICP/0600	ICP/2200
E-156	ENG6 Inland Forest Mgt.	Radcliffe	3	8/18	ICP/0600	ICP/2200
E-9	WTS2 Sagle FD 1271	Stuckey	2	8/18	ICP/0600	ICP/2200
E-130	WTS2 Richardson Tree Care 418408	Richardson	1	8/27	ICP/0600	ICP/2200
E-131	WTS2 Teresas H2O To Go LLC - A30824	Moss	1	8/28	ICP/0600	ICP/2200
7. Control Operations:						
TASK -Secure control lines that have been established ensuring that the conditions of lines are adequate for the strategies proposed.						
PURPOSE - Keep fire north of FSR 437 and east of the north fork of the Hayden Creek to protect private residences and industrial land to the southwest.						
END STATE- Stop southerly and westerly progression of the fire beyond FSR 206.						
8. Special Instructions:						
Tactical and planned firing operations may take place in order to maintain control objectives.						
Review heat-related illness symptoms 2022 IRPG Page 110.						
Keep 3 to 1 water to Gatorade/Powerade ratio.						
Utilize field maps for drop points, safety zones, and potential helispots.						
Ensure that comms are functional throughout the entire division.						
Maintain Situational Awareness around heavy equipment operations.						
9. Division/Group Communication Summary						
Communications Summary						
Channel	Function	RX Frequency	RX Tone	TX Frequency	TX Tone	
3 TAC 3	TAC	168.6000 N	110.9	168.6000 N	110.9	
6 MICA BLM	COMMAND	164.5250 N	NONE	163.0250 N	100.0	
7 Monument FS-Secondary	COMMAND	169.9250 N	107.2	165.5625 N	131.8	
8 Cedar Peak	CMD	170.9750	110.9	168.7000 N		
9 A/G Ignition	TAC	169.5000 N	NONE	165.5000 N	NONE	
12 A/G Primary	A/G	167.1250 N	107.2	167.1250 N	NONE	
13 A/G SECONDARY	A/G	166.6125 N	NONE	166.6125 N	NONE	
16 Air Guard	AIRGUARD	168.6250 N	NONE	168.6250 N	110.9	
Prepared by (Resource Unit Ldr) <i>Susan Thiel</i>				Date 08/16/2023	Time 1900	

DIVISION ASSIGNMENT LIST			1. Branch		2. Division Z (Page 2 / 4)	
3. Incident Name RIDGE CREEK			4. Operational Period From: 08/17/2023 0600 To: 8/18/2023 0600			
5. Operations Personnel						
Field Operations Section Chief		Cory Henry/Brian Wolvert (T)		Branch Director		
Planning Operations Section Chief		Keith Murphy/Darren Bridges (T)		Division Supervisor		Chris White 541-517-6065
6. Resources Assigned this Period						
RO#	Strike Team/Task Force/ Resource Designator	Leader	# People	LWD	Drop Off PT./Time	Pick Up PT./Time
E-1	DZR2 Fousts Inc N00574ZR2	Newcomer	1	8/17	ICP/0600	ICP/2200
E-2	EXC2 Foust 35653	Kramer	1	8/17	ICP/0600	ICP/2200
E-135	MBM2 JG Enterprise	Reichle	3	8/30	ICP/0600	ICP/2200
E-7	GRD1 Foust Inc. L00652	Kramer	1	8/18	ICP/0600	ICP/2200
E-25	HETF Akre Logging Akre 1	Akre	7	8/20	ICP/0600	ICP/2200
E-60	DUMP Joe Hester Logging	Irvine	1	8/23	ICP/0600	ICP/2200
E-61	FRNT Joe Hester Logging	Schopp	1	8/23	ICP/0600	ICP/2200
E-68	LOGL Tracked Log Loader	Hester	2	8/26	ICP/0600	ICP/2200
E-69	LOGL Akre Logging	Blake	2	8/23	ICP/0600	ICP/2200
E-71	LOGT Akre Logging	Randolph	1	8/25	ICP/0600	ICP/2200
E-73	LOGP Akre Logging		2	8/23	ICP/0600	ICP/2200
E-134	MBM2 McColloch Land Clearing	McColloch	2	8/30	ICP/0600	ICP/2200
7. Control Operations: TASK -Secure control lines that have been established ensuring that the conditions of lines are adequate for the strategies proposed. PURPOSE - Keep fire north of FSR 437 and east of the north fork of the Hayden Creek to protect private residences and industrial land to the southwest. END STATE- Stop southerly and westerly progression of the fire beyond FSR 206.						
8. Special Instructions: Tactical and planned firing operations may take place in order to maintain control objectives. Review heat-related illness symptoms 2022 IRPG Page 110 . Keep 3 to 1 water to Gatorade/Powerade ratio. Utilize field maps for drop points, safety zones, and potential helispots . Ensure that comms are functional throughout the entire division. Maintain Situational Awareness around heavy equipment operations.						
9. Division/Group Communication Summary						
Communications Summary						
Channel	Function	RX Frequency	RX Tone		TX Frequency	TX Tone
3 TAC 3	TAC	168.6000 N	110.9		168.6000 N	110.9
6 MICA BLM	COMMAND	164.5250 N	NONE		163.0250 N	100.0
7 Monument FS-Secondary	COMMAND	169.9250 N	107.2		165.5625 N	131.8
8 Cedar Peak	CMD	170.9750 N	110.9		168.7000 N	110.9
9 A/G Ignition	TAC	169.5000 N	NONE		165.5000 N	NONE
12 A/G Primary	A/G	167.1250 N	107.2		167.1250 N	NONE
13 A/G SECONDARY	A/G	166.6125 N	NONE		166.6125 N	NONE
16 Air Guard	AIRGUARD	168.6250 N	NONE		168.6250 N	110.9
Prepared by (Resource Unit Ldr) <i>Susan Thiel</i>				Date	08/16/2023	Time 1730

CORRECTIONS

DIVISION ASSIGNMENT LIST			1. Branch		2. Division Z (Page 3 / 4)	
3. Incident Name RIDGE CREEK			4. Operational Period From: 08/17/2023 0600 To: 8/18/2023 0600			
5. Operations Personnel						
Field Operations Section Chief		Cory Henry/Brian Wolvert (T)		Branch Director		
Planning Operations Section Chief		Keith Murphy/Darren Bridges (T)		Division Supervisor		Chris White 541-517-6065
6. Resources Assigned this Period						
RO#	Strike Team/Task Force/ Resource Designator	Leader	# People	LWD	Drop Off PT./Time	Pick Up PT./Time
O-66	TFLD	Schelin	1	8/18	ICP/0600	ICP/2200
O-37	TFLD (t)	Cobb	1	8/16	ICP/0600	ICP/2200
O-88	TFLD (t)	Mefford	1	8/23	ICP/0600	ICP/2200
O-163	TFLD	Berger	1	8/29	ICP/0600	ICP/2200
O-2	HEQB	Hijos	1	8/17	ICP/0600	ICP/2200
O-25	HEQB	Rexrode	1	8/22	ICP/0600	ICP/2200
O-134	HEQB (t)	Schumacher	1	8/18	ICP/0600	ICP/2200
O-170	HEQB	Courson	1	8/27	ICP/0600	ICP/2200
O-38	HEQB (t)	Hess	1	8/21	ICP/0600	ICP/2200
O-34	HEQB (t)	Harger	1	8/22	ICP/0600	ICP/2200
O-161	TFLD	Walker	1	8/30	ICP/0600	ICP/2200
7. Control Operations: TASK - Secure control lines that have been established ensuring that the conditions of lines are adequate for the strategies proposed. PURPOSE - Keep fire north of FSR 437 and east of the north fork of the Hayden Creek to protect private residences and industrial land to the southwest. END STATE- Stop southerly and westerly progression of the fire beyond FSR 206.						
8. Special Instructions: Tactical and planned firing operations may take place in order to maintain control objectives. Review heat-related illness symptoms 2022 IRPG Page 110. Keep 3 to 1 water to Gatorade/Powerade ratio. Utilize field maps for drop points, safety zones, and potential helispots. Ensure that comms are functional throughout the entire division. Maintain Situational Awareness around heavy equipment operations.						
9. Division/Group Communication Summary						
Communications Summary						
Channel	Function	RX Frequency	RX Tone	TX Frequency	TX Tone	
3 TAC 3	TAC	168.6000 N	110.9	168.6000 N	110.9	
6 MICA BLM	COMMAND	164.5250 N	NONE	163.0250 N	100.0	
7 Monument FS-Secondary	COMMAND	169.9250 N	107.2	165.5625 N	131.8	
8 Cedar Peak	CMD	170.9750 N	110.9	168.7000 N	110.9	
9 A/G Ignition	TAC	169.5000 N	NONE	165.5000 N	NONE	
12 A/G Primary	A/G	167.1250 N	107.2	167.1250 N	NONE	
13 A/G SECONDARY	A/G	166.6125 N	NONE	166.6125 N	NONE	
16 Air Guard	AIRGUARD	168.6250 N	NONE	168.6250 N	110.9	
Prepared by (Resource Unit Ldr(t)) Susan Thiel				Date 08/16/2023	Time 1900	

DIVISION ASSIGNMENT LIST			1. Branch	2. Division Z (Page 4 / 4)		
3. Incident Name RIDGE CREEK			4. Operational Period From: 08/17/2023 0600 To: 8/18/2023 0600			
5. Operations Personnel						
Field Operations Section Chief		Cory Henry/Brian Wolvert (T)		Branch Director		
Planning Operations Section Chief		Keith Murphy/Darren Bridges (T)		Division Supervisor		Chris White 541-517-6065
6. Resources Assigned this Period						
RO#	Strike Team/Task Force/ Resource Designator	Leader	# People	LWD	Drop Off PT./Time	Pick Up PT./Time
O-137	SOFR	Bunce	1	8/28	ICP/0600	ICP/2200
O-138	SOFR (t)	Canning	1	8/29	ICP/0600	ICP/2200
O-166	EMTF	McGuire	1	8/26	ICP/0600	ICP/2200
O-172	EMPF North Fork Medics	Wallace	1	8/29	ICP/0600	ICP/2200
E-80	RAT MESU Kootenai Fire & Rescue	Miller	2	8/23	ICP/0600	ICP/2200
O-103	REMS MESU NIM Medical	Mason	4	8/23	ICP/0600	ICP/2200
E-155	AMB1 ALS Boundary	Hartman	2	8/29	ICP/0600	ICP/2200
7. Control Operations: TASK - Secure control lines that have been established ensuring that the conditions of lines are adequate for the strategies propose PURPOSE - Keep fire north of FSR 437 and east of the north fork of the Hayden Creek to protect private residences and industrial land to the southwest END STATE- Stop southerly and westerly progression of the fire beyond FSR 206 206						
8. Special Instructions: Tactical and planned firing operations may take place in order to maintain control objectives Review heat-related illness symptoms 2022 IRPG Page 110 Keep 3 to 1 water to Gatorade/Powerade ratio. Utilize field maps for drop points, safety zones, and potential helispots Ensure that comms are functional throughout the entire division. Maintain Situational Awareness around heavy equipment operations.						
9. Division/Group Communication Summary						
Communications Summary						
Channel	Function	RX Frequency	RX Tone	TX Frequency	TX Tone	
3 TAC 3	TAC	168.6000 N	110.9	168.6000 N	110.9	
6 MICA BLM	COMMAND	164.5250 N	NONE	163.0250 N	100.0	
7 Monument FS-Secondary	COMMAND	169.9250 N	107.2	165.5625 N	131.8	
8 Cedar Peak	CMD	170.9750 N	110.9	168.7000 N	110.9	
9 A/G Ignition	TAC	169.5000 N	NONE	165.5000 N	NONE	
12 A/G Primary	A/G	167.1250 N	107.2	167.1250 N	NONE	
13 A/G SECONDARY	A/G	166.6125 N	NONE	166.6125 N	NONE	
16 Air Guard	AIRGUARD	168.6250 N	NONE	168.6250 N	110.9	
Prepared by (Resource Unit Ldr(t)) Susan Thiel				Date 08/16/2023	Time 1900	

DIVISION ASSIGNMENT LIST				1. Branch		2. Division Night	
3. Incident Name RIDGE CREEK				4. Operational Period From: 08/17/2023 0600 To: 8/18/2023 0600			
5. Operations Personnel							
Field Operations Section Chief		Cory Henry/Brian Wolverter (T)		Branch Director			
Planning Operations Section Chief		Keith Murphy/Darren Bridges (T)		Division Supervisor		Rufus Davis 352-427-0929	
6. Resources Assigned this Period							
RO#	Strike Team/Task Force/ Resource Designator	Leader	# People	LWD	Drop Off PT./Time	Pick Up PT./Time	
C-5	CRW1 Klamath IHC	Owensbey	19	8/20	ICP/1800	ICP/0600	
E-54	ENG6 Castle Mountain D83273	Tsosie	3	8/22	ICP/1800	ICP/0600	
E-55	ENG6 Bakken Robert	Bakken	3	8/22	ICP/1800	ICP/0600	
E-57	ENG6 Castle Mountain C19623	Cork	3	8/23	ICP/1800	ICP/0600	
E-58	ENG6 Solomons Fire Equip 299099	Hawley	3	8/23	ICP/1800	ICP/0600	
O-162	TFLD	Daugherty	1	8/30	ICP/1800	ICP/0600	
O-136	SOFR	Carpenter	1	8/27	ICP/1800	ICP/0600	
O-96	EMPF	Allen	1	8/24	ICP/1800	ICP/0600	
E-119	ENG6 R.CONSTRUCTION	DEROCHE	3	8/30	ICP/1800	ICP/0600	
7. Control Operations: TASK - Monitor fire behavior from a safe vantage point and support potential firing operations when needed. PURPOSE - Observe and report any fire movement that threatens the control lines. END STATE - Ensure fire remains inside established control lines.							
8. Special Instructions: Ridge Creek communications is staffed 24 hours per day. Ensure that comms are functional throughout the entire group. Limit driving along mountainous roads. IMT night contact is Planning Operations Section Chief							
9. Division/Group Communication Summary							
Communications Summary							
Channel	Function	RX Frequency	RX Tone		TX Frequency	TX Tone	
5 TAC 5	TAC	166.7750 N	110.9		166.7750 N	110.9	
6 BLM MICA	COMMAND	164.5250 N	NONE		163.0250 N	100.0	
7 FS MONUMENT	COMMAND	169.9250 N	107.2		165.5625 N	131.8	
8 CEDAR PEAK	COMMAND	170.9750 N	110.9		168.7000 N	110.9	
10 MICA FS	COMMAND	169.9250 n	107.2		165.5625 N	167.9	
12 AIR TO GROUND PRIMARY	A/G	167.1250 N	107.2		167.1250 N	NONE	
13 AIR TO GROUND SECONDARY	A/G	166.6125 N	NONE		166.6125 N	NONE	
16 Air Guard	AIRGUARD	168.6250 N	NONE		168.6250 N	110.9	
Prepared by (Resource Unit Ldr) <i>Susan Thiel</i>					Date 08/16/2023		Time 2030

AIR OPERATIONS SUMMARY 220		Prepared By: John Fish, AOB		Prepared: 08/16/2023		Prepared Time: 1730 hrs.	
INCIDENT NAME: Ridge Creek Fire		OPERATIONAL PERIOD 8/17/23		START TIME 0900		SUNRISE 0545	
				END TIME 2000		SUNSET 1956	

REMARKS	MEDICAL RESPONSE AIRCRAFT	TFR
-All aircraft orders thru Air Attack if on scene, otherwise thru AOB		Ridge Creek 3/3347
-Large Electric Transmission Line through center of fire area		8,000 feet MSL.
-Retardant restricted in pre-designated avoidance areas and Chilco Trail ridge to the NE		24 Hours
		Freq. 119.15

PERSONNEL	NAME	PHONE #	FREQUENCIES	AM	FM	FIXED-WING Avail/ Type/ Make-Model/ N#/ Base
AOBD	John Fish	850-843-0977	A/G PRI		167.1250	ATGS Platforms: N690CP Call Sign - AA690 - assigned to fire N197GB Call Sign - AA 115
ASGS(T)	Caleb Schreiber	715-628-6999	A/G SEC		166.6125	F/W Bases: Coeur d'Alene Airport (COE)
ATGS (AA690) ATGS(T)	Justin Cutler Ian McQueary	775-315-6113 925-212-1043	A/G Marine Hayden Lake		169.5000	R/W Bases: Coeur d'Alene Airport (COE) Sand Point
UAS Module Unmanned R31 (UR31)	Jordan Black	865-250-3128	KCOE Tower KCOE Ground	120.125 127.00		Air Tankers LATs - T105 & T132 SEATs - FB-205, FB-206, FB-217, FB-219 Scoopers - CL415s - S261, S262

HELICOPTERS

FAA N#	TY	MAKE/ MODEL	BASE	START AVAIL	REMARKS	FAA N#	TY	MAKE/ MODEL	BASE	START AVAIL	REMARKS
N258PJ	1	CH-47D	COE	0800	Bucket	N214KA	2	B212	COE	0800	Bucket
N214B	1	B214	Sand Point	0800	Bucket	N28HX	2	B205+	COE	0800	Bucket/Rappel
N274TH	1	UH-60A+	COE	0800	Bucket	N777TD	3	B407	COE	0800	Bucket/Recon
N357KA	1	K-MAX	COE	0800	Bucket assigned to fire	N102RF	3	AS350B2	COE	0800	Bucket/Recon
N2773H	2	B205++	COE	0830	Bucket assigned to fire						

**Ridge Creek Fire
EA Silver Team Phone List**

Position	Name	Cell
Incident Commander	Steve Miller	414-308-6861
Deputy Incident Commander (trainee)	Chris Woods	573-315-8394
Incident Commander (trainee)	Maris Gabliks	609-235-7524
Safety Officer	Lee Osterland	231-357-7381
Safety Officer	Terry Trapp	715-610-3695
Safety Officer (trainee)	Kent Glazer	715-340-0891
Safety Officer Line	Craig Bunce	626-808-1270
Safety Officer Line	Sean Obrien	732-690-9715
Safety Officer Line	Tim Carpenter	607-664-1021
Safety Officer Line	Chris O'Brien	603-419-9153
Safety Officer Line (trainee)	David Canning	231-878-5919
Fire Information	FireNet	208-953-7022
Public Information Officer	Clark McCreedy	989-292-9373
Public Information Officer	Brian VanVickle	815-994-8522
Liaison Officer	Ron Robinson	612-860-1257
Liaison Officer	Cecile Stelter	814-688-7133
Operations Section Chief	Keith Murphy	906-250-1382
Operations Section Chief	Cory Henry	906-280-4144
Strategic Operations	Joe Alyea	509-671-1610
Air Operations Branch Director	John Fish	850-843-0977
Planning Section Chief	Robbi Mecus	518-524-6622
Planning Section Chief	Peter Fischer	304-618-9083
Planning Section Chief (trainee)	Aaron Young	608-558-5844
Check-In/Demob	General	208-891-6074
Logistics Section	General	208-891-6611
Medical Unit Leader	Robert White	715-415-2400
Medical Unit Leader	Mike Passarelli	330-633-0547
Medical Unit Leader (trainee)	Robert Eggert	708-691-2313
Communications Unit	Arnold Irvine	814-730-0389
Communications- NIGHT	Night	208-891-6392
Finance Section	FireNet	208-510-5158
Hudlow Base Satellite Phone	IC	941-248-0924
Hudlow Base Satellite Phone	Operations	619-775-3172
Hudlow Base Satellite Phone	Safety	858-324-3773

INCIDENT RADIO COMMUNICATIONS PLAN (ICS 205)

Controlled Unclassified Information//Basic

1. Incident Name: Ridge Creek Fire		2. Date/Time Prepared: Date: 08/16/23 Time: 1730	
3. Operational Period: DAY SHIFT		Date/Time From: 08/17/23 0600	
		Date/Time To: 08/18/23 0600	

4. Basic Radio Channel Use:										
Zone Group	Ch #	Function	Channel Name	Assignment	RX Freq	RX Tone/NAC	TX Freq	TX Tone/NAC	Mode (A,D, or M)	Remarks
1	1	TACTICAL	TAC 1	DIV A	168.0500 N	110.9	168.0500 N	110.9	A	
1	2	TACTICAL	TAC 2	DIV K	168.2000 N	110.9	168.2000 N	110.9	A	
1	3	TACTICAL	TAC 3	DIV Z	168.6000 N	110.9	168.6000 N	110.9	A	
1	4	TACTICAL	TAC 4	STRUCTURE GROUP	166.7250 N	110.9	166.7250 N	110.9	A	
1	5	TACTICAL	TAC 5	CONTINGENCY GROUP/Night	166.7750 N	110.9	166.7750 N	110.9	A	
1	6	COMMAND	MICA/BLM	ALL DIVS	164.5250 N	NONE	163.0250 N	100.0	A	BLM MICA RPTR
1	7	COMMAND	MONUMENT	ALL DIVS	169.9250 N	107.2	165.5625 N	131.8	A	FS MONUMENT SECONDARY
1	8	COMMAND	CEDAR PK	ALL DIVS	170.9750 N	110.9	168.7000 N	110.9	A	Cedar peak primary day only
1	9	TACTICAL	A/G IGNITION	FIRING GROUP	169.5000 N	NONE	169.5000	NONE	A	AERIAL IGNITION
1	10	COMMAND	MICA FS	ALL DIVS	169.9250 N	107.2	165.5625 N	167.9	A	Night shift only SECONDARY
1	12	TACTICAL	A/G PRIMARY	All Divs	167.1250 N	107.2	167.1250 N	NONE	A	A/G PRIMARY
1	13	TACTICAL	A/G SECONDARY	All Divs	166.6125 N	NONE	166.6125 N	NONE	A	A/G SECONDARY
1	14	EMS	EMS	EMS 2	155.2800 N	NONE	155.2800 N	156.7	A	EMS 2
1	16	AIR GUARD	AIR GUARD	ALL DIVS	168.6250 N	NONE	168.6250 N	110.9	A	EMERGENCY CALL TO AIRCRAFT

5. Special Instructions:

6. Prepared By: Communications Unit Leader **Name:** : ARNIE IRVINE **Signature:** /s/ Arnie Irvine

Date/Time: 8/16/23 1730

MEDICAL PLAN (ICS 206 WF)

Controlled Unclassified Information//Basic

1. Incident/Project Name		2. Operational Period					
Ridge Creek Fire		Date/Time 0600 – 0600		8/17/2023 to 8/18/2023			
3. Ambulance Services							
Name	Complete Address	Phone & EMS Frequency	Advanced Life Support (ALS)				
			Yes	No			
Timber Lake Fire Protection	5984 E Highway 54 Athol Id 54 west of 95	208-772-3283	<input type="checkbox"/>	<input checked="" type="checkbox"/>			
Kootenai County EMS	4381 W. Seltice Way CDA, ID	208-930-4224	<input checked="" type="checkbox"/>	<input type="checkbox"/>			
4. Air Ambulance Services							
Name	Phone	Type of Aircraft & Capability					
Life Flight	208-772-3283	Hayden or Sandpoint ID					
Short Haul or Hoist	208-772-3283	Through Coeur d Alene Dispatch					
Agency Helo	208-772-3283	USFS Coeur d Alene Dispatch					
5. Hospitals							
Name Complete Address	GPS Datum – WGS 84 Coordinate Standard Degrees Decimal Minutes DD° MM.MMM' N - Lat DD° MM.MMM' W - Long	Travel Time Air	Gnd	Phone	Helipad Yes No	Level of Care Facility	
Kootenai General Hospital 2003 Kootenai Health Way, Coeur d'Alene	Lat: 47 45.658 N	15 min	30 min	208-625-4000	<input checked="" type="checkbox"/>	<input type="checkbox"/>	Level 2 Trauma
	Long: 116 47 41.684W						
	VHF:						
Bonner General Hospital 520 N Third Ave, Sandpoint, ID	Lat: 48 16.650	15 min	60 min	208-263-1441	<input checked="" type="checkbox"/>	<input type="checkbox"/>	Level 4 Trauma
	Long: 116 32.92						
	VHF:						
Sacred Heart Medical 101 W Eighth Ave, Spokane Wi	Lat: 47 38.500	25 min	120 min	509-474-3131	<input checked="" type="checkbox"/>	<input type="checkbox"/>	Level 2 Trauma
	Long: 117 24.800						
	VHF:						
Harborview Medical Center Seattle Wa.	Lat: 47 36.238	120 min	300 min	206-744-3074 206744-5735 Burn center #	<input checked="" type="checkbox"/>	<input type="checkbox"/>	Level 1 Trauma & Burn Center
	Long: 122 19.461						
	VHF:						
Northwest Urgent Care 7173 E Super 1 Loop Suite A Athol, ID Intersection of 54 &95	Lat: 47.950879		10 min	208-561-9970	<input type="checkbox"/>	<input checked="" type="checkbox"/>	Urgent care only Hours: 0800-1800 M-F 0800-1600 S-S
	Long: -116.694570						
6. Division Branch Group		Area Location Capability					
A		Point of Contact:		O-19 (Wolfstitch) EMTF (520)508-9807 & O-20 Axel EMTF (612) 532-5181 & E-122 Idaho Fall Ambulance (Hirschi) (208) 221-6979 & O-171 (Keys) (520) 395-6832 & O-173 (Orde)EMPF (307)399-7316			
		EMS Responders & Capability:		BLS & ALS			
		Equipment Available on Scene:		BLS & ALS			
		Medical Emergency Channel:		Cedar Peak			
		ETA for Ambulance to Scene:					
		Air:		40min			
		Ground:		10 min to the Alpha/Zulu Break			
		Approved Helispot:		H-90 H-70			
		Lat:		N47 49.490 N47 50.335			
		Long:		116 35.685 116 33.685			

MEDICAL PLAN (ICS 206 WF)

Controlled Unclassified Information//Basic

K	Point of Contact:	O-101 EMPF (Henderon) (443)851-7014 & O-174 EMPF (Kemmerer) (321)750-1197		
	EMS Responders & Capability:	ALS		
	Equipment Available on Scene:	ALS		
	Medical Emergency Channel:	Cedar Peak		
	ETA for Ambulance to Scene:			
	Air:			
	Ground:			
	Approved Helispot	H-50	H-44	
	LAT:	47 51'757 N	47 52.090N	
	Long:	116 33'295W	116 35.503W	
Z	Point of Contact:	O-102 REM (Mason) (605) 545-4293 & E-80 RAT (Miller) (208) 869-2657 & O-166 EMTF (McGuire) (860) 748-9921 & O-172 (Wallace)(406) 239-1811 & E-155 Boundary Amb (Hutchinson) (208)304-4036		
	EMS Responders & Capability:	ALS		
	Equipment Available on Scene:	RAT & REM & Ambulance		
	Medical Emergency Channel:	Cedar Peak		
	ETA for Ambulance to Scene:			
	Air:	40 min		
	Ground:	10 min to the Alpha/Zulu break		
	Approved Helispot:	H-10	H-44	
	Lat:	N47 49.300	47 52.090N	
	Long:	116 39.650W	116 35.503W	
Hudlow Base	Point of Contact:	O-19 (Wolfstitch)EMTF (520)508-9807 & O-20 (Axel) EMTF (612) 532-5181 & E-122 Idaho Fall Ambulance (Hirschi) (208) 221-6979 & O-6.55 MEDL(t) (Eggert) (708)691-3111 & O-171 (Keys) (520) 395-6832 & O-173 (Orde)EMPF (307)399-7316		
	EMS Responders & Capability:	ALS		
	Equipment Available on Scene:	ALS Amb		
	Medical Emergency Channel:	Cedar Peak		
	ETA for Ambulance to Scene:	ALS Ambulance Staged at Base		
	Air:			
	Ground:			
	Approved Helispot:	H-70	H-74	
	Lat:	N47 50.335	47 48.400N	
	Long:	116 33.685	116 30.622W	
Structure Protection	Point of Contact:	UNSTAFED		
	EMS Responders & Capability:			
	Equipment Available on Scene:			
	Medical Emergency Channel:			
	ETA for Ambulance to Scene:			
	Air:			
	Ground:			
	Approved Helispot:			
	Lat:			
	Long:			
Night Operations	Point of Contact:	O-96 EMPF (Allen) (208) 403-9937		
	EMS Responders & Capability:	ALS		
	Equipment Available on Scene:	ALS		
	Medical Emergency Channel:	Cedar Peak		
	ETA for Ambulance to Scene:			
	Air:			
	Ground:			
	Approved Helispot:	All approved Helispots as needed		
	Lat:			
	Long:			
7. Prepared By (Medical Unit Leader)	8.	9. Reviewed By (Safety Officer)	10. Date/Time	
Mike Passarelli MEDL <i>Mike Passarelli MEDL</i>		Lee Osterland <i>Lee Osterland</i>	8/16/23 1700	

HEALTH AND SAFETY MESSAGE

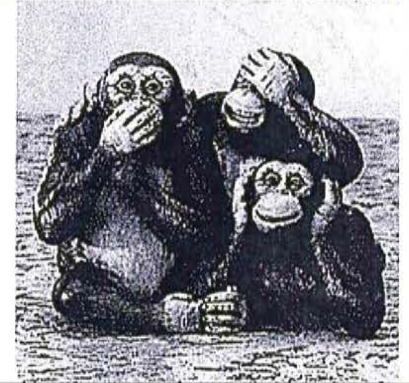


We train like we are going to fight, because we will fight like we have been trained.

INCIDENT: Ridge Creek Fire	DATE: 08/17/23 Operational.. Period: Day/Night
-----------------------------------	--

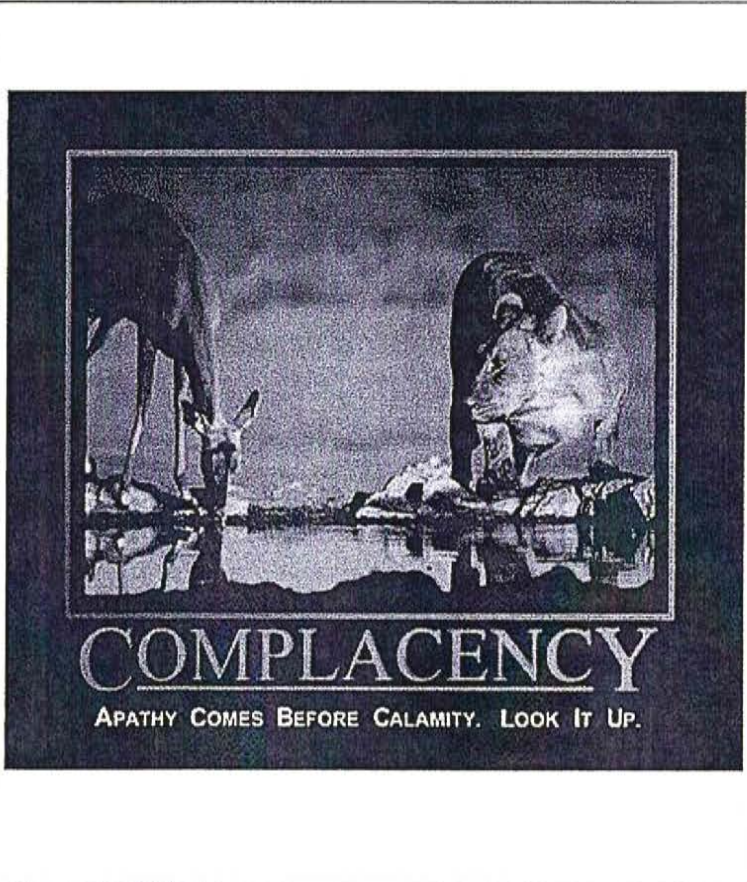
Major Hazards and Risks:

- Aviation
- ATV/Vehicle Operations
- Complacency
- Chainsaw Operations
- Heavy Equipment
- Hazard Trees
- Dehydration



Complacency, what is it?

A feeling of contentment or self-satisfaction, especially when coupled with an unawareness of **danger, trouble, or controversy.**



How do you mitigate for complacency?

Five stages of complacency that supervisors need to recognize

1. Good operating
2. Self-satisfaction
3. Blindness
4. Denial
5. Collapse

One possible solution is to rotate job responsibilities or reorganize staff members as needed. Moving people around will prevent complacency because it prevents work from becoming mundane. By challenging people to learn more creative tasks, they will be forced to learn new skill sets. This provides them the capacity to be more creative and also builds a work force that is more flexible to meet new changes.

Safety Officers	Line Safety
Lee Osterland SOFC, Terry Trapp SOF2, Ken Glazer SOFC(t)	SOFR's: TJ Carpenter, Sean O'Brien, Chris O'Brien, Craig Bunce, Dave Canning

Resource Advisor Message

Water Bars

Have you seen the long-term weather forecast? Rain possible and for sure it will someday on this fire.

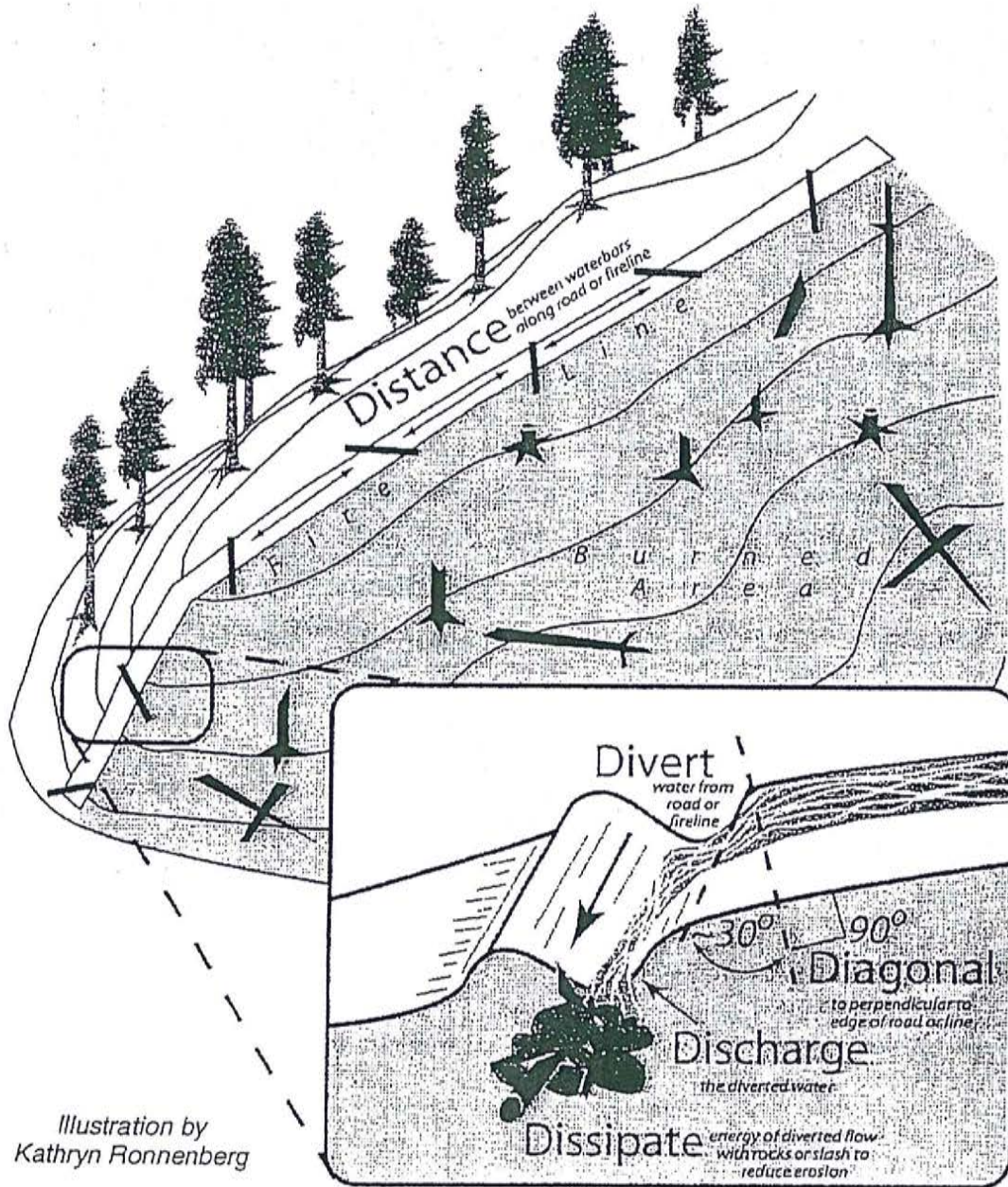


Illustration by
Kathryn Ronnenberg

Image pulled from Eldorado NF Facebook post.

- Used to divert water off the fire line before it builds enough energy to cause erosion.
- Discharge water into areas that can better handle the water. Typically, not the burned area!
- "Rolling dips" in machine line and roads are just big water bars. They serve the same purpose.



Finance Message

Finance Email: 2023.ridgecreek@firenet.gov
SUBJECT: *Include Key Word TIME* for Overhead, Crews & Cooperators
SUBJECT: *Include Key Word EQUIPMENT* for Contract

FINANCE CHECK IN:

2023.ridgecreek@firenet.gov

PLEASE ENSURE THE BELOW DOCUMENTS ARE EMAILED

Overhead, Crews & Cooperator Resources	Contract Resources
<ul style="list-style-type: none"> • Check-In: Crew Manifest, Cooperative Agreement (if applies), AD Casual Hire Letter, Resource Order • Daily: Crew Time Report (CTR), Shift Tickets 	<ul style="list-style-type: none"> • Check-In: Resource Order, Contract/VIPR Agreement (make sure you have your UEI, Pre-Inspection) • Daily: Shift Tickets, (Include Transports when applicable) receipts (fuel issues, claims, etc.)

REMINDERS

- * WE WILL BE COMPLETELY DIGITAL ON THIS INCIDENT. IF YOU NEED ASSISTANCE, PLEASE CONTACT FINANCE AT 2023.ridgecreek@firenet.gov
- * PLEASE MAKE SURE C OR E # IS ON THE CTR OR SHIFT TICKET
- * PLEASE SHOW YOUR LUNCH BREAK
- * PLEASE USE MILITARY TIME (0001-2400)
- * WHEN CLAIMING HAZARD PAY YOU MUST INCLUDE THE SUPPRESSION ACTION BEING PERFORMED. THIS INCLUDES OPERATIONS WHICH DIRECTLY SUPPORT CONTROL OF FIRE (E.G., ACTIVITIES TO EXTINGUISH THE FIRE, FIREFIGHTING, GROUND SCOUTING, SPOT FIRE PATROLLING, SEARCH AND RESCUE OPERATIONS, AND BACKFIRING).
- * WHEN SIGNING YOUR ELECTRONIC OF-288 or OF-286 PLEASE DO NOT LOCK IT or PROTECT THE SIGNATURE, WE HAVE TO BE ABLE TO SIGN IT AND SEND YOU A COPY
- * IF A GUARANTEE APPLIES FOR A TRANSPORT ON THE FIRE, THIS MUST BE INDICATED ON YOUR SHIFT TICKET IN THE REMARKS
- * For assistance with CLAIMS please contact Farah Scalora at farrah_scalora@firenet.gov

CHECK-IN PROCEDURE

1. Scan the QR code on the cover of the IAP and click the Check-in button
 - o If you have questions, visit Check-In in the Plans yurt at ICP and we can assist you with the virtual form, or call 208-891-6074
2. Check in with Finance – see the Finance page

DEMOB PROCEDURE

- ** If you need a flight arranged, use the QR code on the cover of the IAP and click the Flight Request button to submit your request 72 hours prior to your anticipated demob time. If you have trouble with the form, you may visit Demob in person or call 208-891-6074.**
- ** If you are on the Tentative Release list below and you don't think you should be, contact your supervisor first to discuss, and then visit or call Demob.**

How to demob:

1. If you are not on the Tentative Release list below, your section chief needs to submit a 213 to Demob to release you at least 24 hours in advance (72 hours if flight is needed).
2. At your scheduled release date/time listed below, visit Demob in the Plans yurt at ICP. The Demob process is mostly in person (not virtual) at this time. However, anyone who needs to demob remotely (if you cannot come to ICP) can call 208-891-6074.

LOGISTICS SERVICE HOURS

BREAKFAST:	0530 – 0830
DINNER:	1800 – 2130
SHOWERS:	0500 – 2200 (CLOSED 1100 – 1300)
SUPPLY & GROUND SUPPORT:	0600 – 2130
FUEL:	0600 – 2130 (CLOSED 1300 – 1500)
WEED WASH (at Staging)	0600 – 2130
REEFER:	0530 – 2130
ORDERING:	0700 – 2000

- PLEASE camp only in Team designated areas!

TENTATIVE RELEASE

08/17/2023

EQUIPMENT

E-1	1800	DZR2	DZR2 - FOUSTS INC - N00574
E-2	1815	EXC2	EXC2 - FOUSTS INC - 35653
E-126	0800	SKG1	SKG1 - JOE HESTER LOGGING, LLC - 717706

OVERHEAD

O-62	0800	SEC2	BATTLE, BENJAMIN L
O-82	2000	THSP	COTTER, IAN

08/18/2023

CREWS

C-21	0700	CRW1	CRW1 - MAD RIVER IHC
------	------	------	----------------------

EQUIPMENT

E-4	1000	WTS2	WTS2 - CRAIG MARTIN - 492771
-----	------	------	------------------------------

OVERHEAD

O-2	0700	HEQB	HAJOS, MATTHEW
-----	------	------	----------------

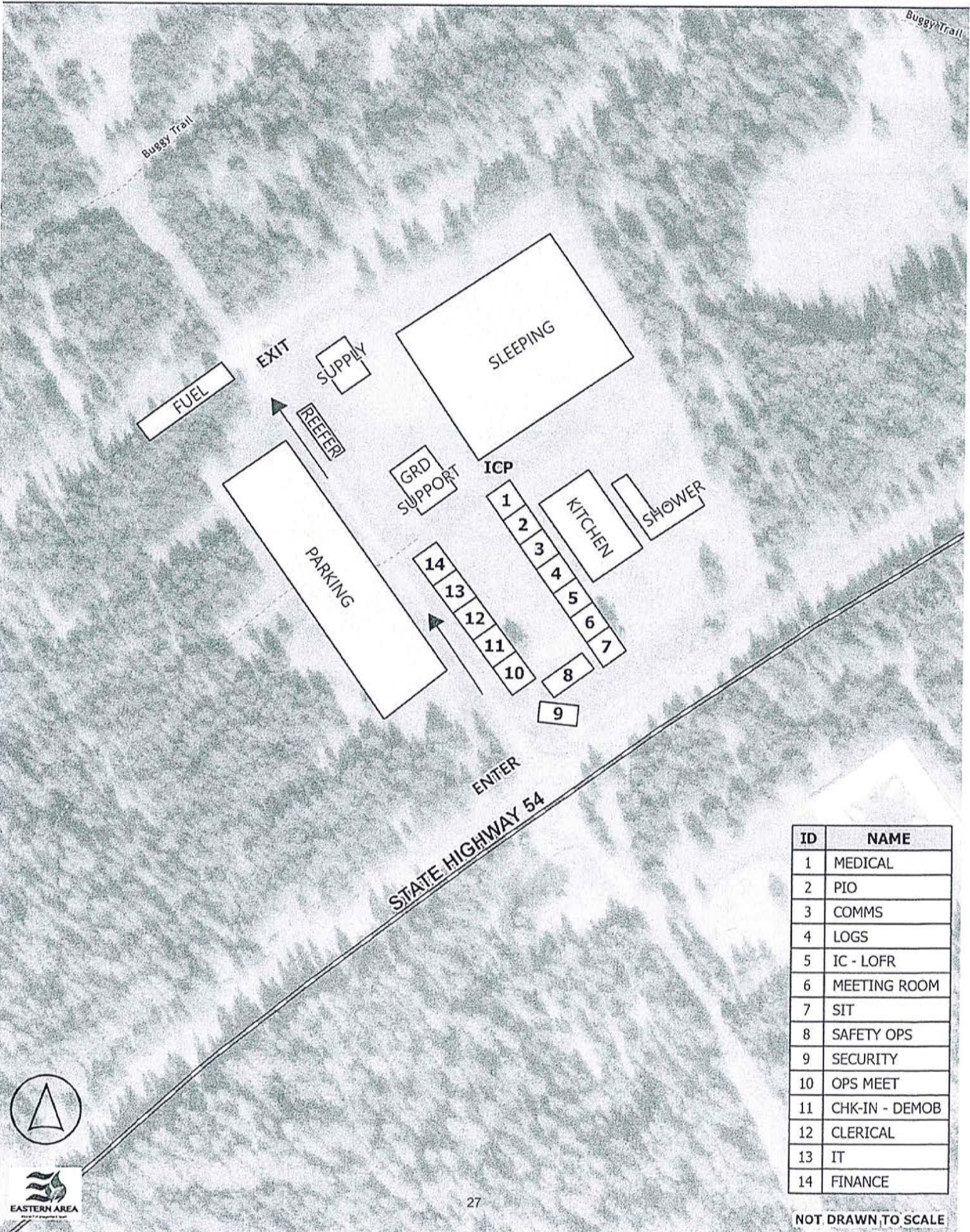
08/19/2023

EQUIPMENT

E-9	0830	WTT2	WTT2 - SAGLE FD 1271
E-7	0900	GRD1	GRD1 - FOUSTS INC - L00652
E-8	0930	EXC2	EXC2 - FOUSTS INC - 35616

OVERHEAD

O-134	0730	HEQB	SCHUMACHER, CHRISTOPHER
O-66	2200	TFLD	SCHELIN, CASEY LEE



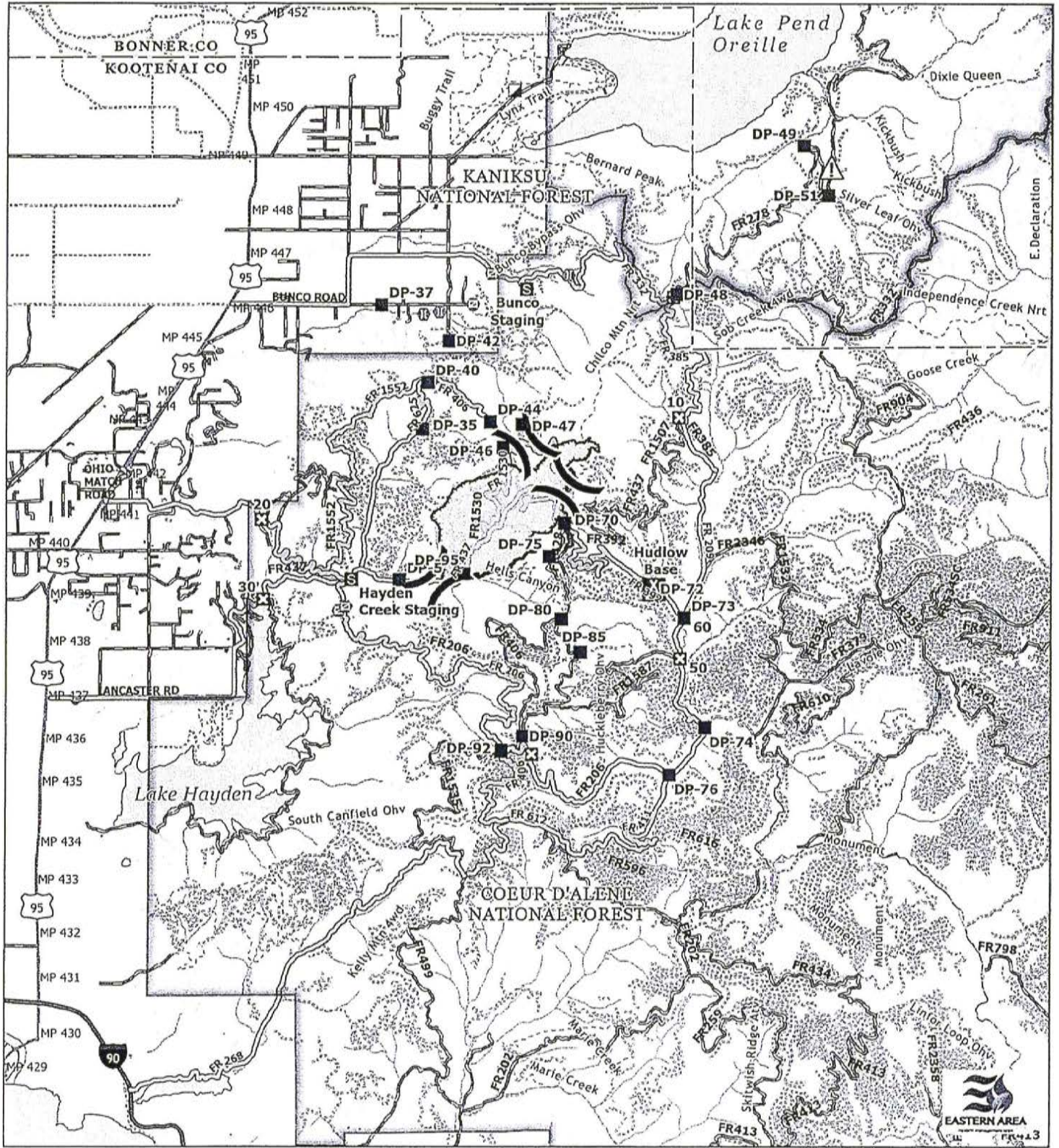
ID	NAME
1	MEDICAL
2	PIO
3	COMMS
4	LOGS
5	IC - LOFR
6	MEETING ROOM
7	SIT
8	SAFETY OPS
9	SECURITY
10	OPS MEET
11	CHK-IN - DEMOB
12	CLERICAL
13	IT
14	FINANCE



TRANSPORTATION

8/17/2023 Day

RIDGE CREEK



RIDGE CREEK IDIPF000447

3,124 acres
8/15/2023 2212 hrs

North American 1983 Datum,
LatLong Grid

- Wildfire Daily Fire Perimeter
- Contained
- Uncontained
- Unimproved Road
- Improved Road
- Main Access Roads

- Division Break
- Camp
- Incident Command Post
- Drop Point
- Closure
- Staging Area

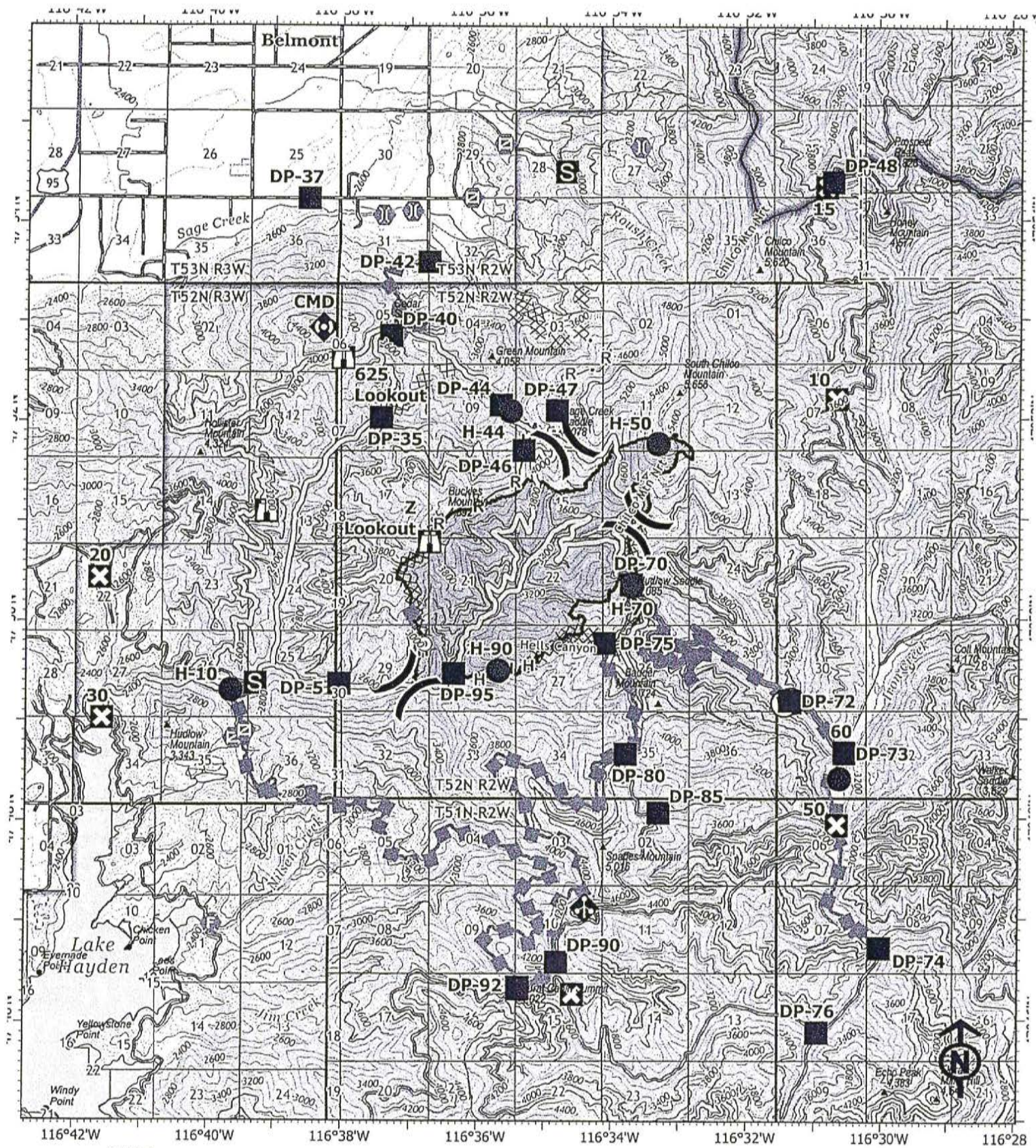
- Gate
- Bridge
- Hazard
- Land Management**
- Bureau of Land Management (BLM)
- State

- US Forest Service (USFS)
- Boundaries**
- County
- National Forest



Driving Directions to Hudlow Base Camp

- Hwy 95 to E Ohio Match Rd.
- E Ohio Match Rd turns into FR206
- At Hayden Creek Staging Turn RIGHT
- Staying on FR206 till DP 92
- DP 92 turn LEFT – Take the RIGHT Fork
- Stay on FR206 until you get to FR209
- Stay on FR209 until FR392 turn LEFT on FR392
- Camp is at DP72



IAP
RIDGE CREEK
IDIPF000447

08/17/2023 Day
 3,124 acres at 8/15/2023 2212 hrs
 Acres from IR



- | | | | |
|------------------------|------------------------|-----------------------------------|---------------------------------|
| ● Helispot | ⊕ Value at Risk | H— Completed Hand Line | — Contained |
| ⊗ Division Break | ⊕ Gate | R— Completed Road as Line | --- Uncontained |
| ■ Drop Point | ⊕ Fire Station | — Planned Dozer Line | □ Wildfire Daily Fire Perimeter |
| ⊗ Closure | ⊕ Bridge | H Planned Hand Line | BLM |
| ⊕ Camp | ⊕ Mobile Weather Unit | M Planned Mixed Construction Line | State |
| ⊕ Staging Area | ⊕ Repeater | R Planned Road as Line | USFS |
| ⊕ Lookout | ⊕ Water Source | — Access or Improved Road | |
| ⊕ Hot Spot - Spot Fire | ⊗ Completed Dozer Line | — Escape Route | |



MEDICAL PLAN (ICS 206a WF)

Controlled Unclassified Information//Basic

Medical Incident Report																													
<p>FOR A NON-EMERGENCY INCIDENT, WORK THROUGH CHAIN OF COMMAND TO REPORT AND TRANSPORT INJURED PERSONNEL AS NECESSARY.</p> <p>FOR A MEDICAL EMERGENCY: IDENTIFY ON SCENE INCIDENT COMMANDER BY NAME AND POSITION AND ANNOUNCE "MEDICAL EMERGENCY" TO INITIATE RESPONSE FROM IMT COMMUNICATIONS/DISPATCH.</p>																													
<p>Use the following items to communicate situation to communications / dispatch.</p>																													
<p>1. CONTACT COMMUNICATIONS / DISPATCH (Verify correct frequency prior to starting report) <i>Ex: "Communications, Div. Alpha. Stand-by for Emergency Traffic."</i></p> <p>2. INCIDENT STATUS: Provide incident summary (including number of patients) and command structure. <i>Ex: "Communications, I have a Red priority patient, unconscious, struck by a falling tree. Requesting air ambulance to Forest Road 1 at (Lat./Long.) This will be the Trout Meadow Medical, IC is TFLD Jones. EMT Smith is providing medical care."</i></p>																													
Severity of Emergency / Transport Priority	<input type="checkbox"/> RED / PRIORITY 1 Life or limb threatening injury or illness. Evacuation need is IMMEDIATE <i>Ex: Unconscious, difficulty breathing, bleeding severely, 2° - 3° burns more than 4 palm sizes, heat stroke, disoriented.</i> <input type="checkbox"/> YELLOW / PRIORITY 2 Serious Injury or illness. Evacuation may be DELAYED if necessary. <i>Ex: Significant trauma, unable to walk, 2° - 3° burns not more than 1-3 palm sizes.</i> <input type="checkbox"/> GREEN / PRIORITY 3 Minor Injury or illness. Non-Emergency transport <i>Ex: Sprains, strains, minor heat-related illness.</i>																												
Nature of Injury or Illness & Mechanism of Injury				<i>Brief Summary of Injury or illness (Ex: Unconscious, Struck by Falling Tree)</i>																									
Transport Request				<i>Air Ambulance / Short Haul / Hoist Ground Ambulance / Other</i>																									
Patient Location				<i>Descriptive Location & Lat. Long (WGS84)</i>																									
Incident Name				<i>Geographic Name + "Medical" (Ex: Trout Meadow Medical)</i>																									
On-Scene Incident Commander				<i>Name of on-scene IC of incident within an Incident (Ex: TFLD Jones)</i>																									
Patient Care				<i>Name of Care Provider (Ex: EMT Smith)</i>																									
<p>3. INITIAL PATIENT ASSESSMENT: Complete this section for each patient as applicable (start with the most severe patient) Patient Assessment: See IRPG Page 106</p>																													
Treatment:																													
<p>4. TRANSPORT PLAN: Evacuation Location (if different): (Descriptive Location (drop point, intersection, etc.) or Lat. / Long.) Patient's ETA to Evacuation Location:</p>																													
Helispot / Extraction Site Size and Hazards:																													
<p>5. ADDITIONAL RESOURCES / EQUIPMENT NEEDS: <i>Example: Paramedic/EMT, Crews, Immobilization Devices, AED, Oxygen, Trauma Bag, IV/Fluid(s), Splints, Rope rescue, Wheeled litter, HAZMAT, Extrication</i></p>																													
<p>6. COMMUNICATIONS: Identify State Air/Ground EMS Frequencies and Hospital Contacts as applicable</p> <table border="1" style="width: 100%; border-collapse: collapse;"> <thead> <tr> <th style="width: 15%;">Function</th> <th style="width: 20%;">Channel Name/Number</th> <th style="width: 15%;">Receive (RX)</th> <th style="width: 15%;">Tone/NAC *</th> <th style="width: 15%;">Transmit (TX)</th> <th style="width: 20%;">Tone/NAC *</th> </tr> </thead> <tbody> <tr> <td>COMMAND</td> <td></td> <td></td> <td></td> <td></td> <td></td> </tr> <tr> <td>AIR-TO-GRND</td> <td></td> <td></td> <td></td> <td></td> <td></td> </tr> <tr> <td>TACTICAL</td> <td></td> <td></td> <td></td> <td></td> <td></td> </tr> </tbody> </table>						Function	Channel Name/Number	Receive (RX)	Tone/NAC *	Transmit (TX)	Tone/NAC *	COMMAND						AIR-TO-GRND						TACTICAL					
Function	Channel Name/Number	Receive (RX)	Tone/NAC *	Transmit (TX)	Tone/NAC *																								
COMMAND																													
AIR-TO-GRND																													
TACTICAL																													
<p>7. CONTINGENCY: Considerations: If primary options fail, what actions can be implemented in conjunction with primary evacuation method? Be thinking ahead.</p>																													
<p>8. ADDITIONAL INFORMATION: Updates/Changes, etc.</p>																													
<p>REMEMBER: Confirm ETA's of resources ordered. Act according to your level of training. Be Alert. Keep Calm. Think Clearly. Act Decisively.</p>																													