

Corrected

Ridge Creek

Incident Action Plan

Saturday, August 19, 2023, 0600 -

Sunday, August 20, 2023, 0600



St. Maries 1910 Fire Memorial

ID-IPF-000447

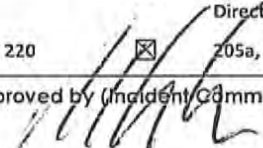
P1QG9D (0104)



QR Code to download:
IAP, Maps, CTR/EST, Incident Emails,
Demob Flight Requests
<https://linktr.ee/2023ridgecreek>

Corrected

Corrected

INCIDENT OBJECTIVES	1. Incident Name Ridge Creek Fire	2. Date 8/18/23	3. Time 2000
4. Operational Period: 8/19/202 0600 to 8/20/2023 0600			
<p>5. General Control Objectives for the Incident</p> <ul style="list-style-type: none"> • Protection of human life is the highest priority. Use a deliberative risk management process that mitigates risk to the public and firefighting resources while implementing a course of action where there is a high probability of success. • Ridge Creek: Keep fire east of the boundary between private ownership and National Forest Keep fire south of the boundary between private ownership and National Forest Keep fire south of the Bunco Road (FSR 332) Keep fire north of FSR 206 Keep fire west of FSR 209 to protect or minimize impacts to Little North Fork River Corridor • Protect infrastructure, private residences, private inholdings, and businesses within and near the planning area from negative impacts by fire and mitigate smoke impacts when possible. <ul style="list-style-type: none"> ○ Develop a population protection plan for east of Hayden Lake. ○ Coordinate with Kootenai County Emergency Management and Bonner County as appropriate. ○ Coordinate with Kootenai County Sheriff on emergency evacuation plan as needed. ○ Implement and maintain any road, trail, or area closures for public safety as needed. • Minimize fire and suppression impacts to timber values on private industrial timber lands and National Forest System lands. • Minimize potential fire impacts to critical community infrastructure including Hayden Creek Watershed, Hayden Lake Watershed, associated Riparian Habitat Conservation Areas (RHCA), and Bonneville Power Administration Transmission Lines. • Build and maintain a high degree of trust with our partners, cooperators, stakeholders, and forest visitors by providing accurate, timely, and well distributed information. • In addition, follow established management action points and requirements found in the Ridge Creek WFDSS decision. 			
<p>5b. Incident Commander's Intent</p> <ol style="list-style-type: none"> 1. To create an environment free of harassment of any kind. My goal is to create a workplace where employees would feel comfortable if their family members and loved ones worked there too. 2. Prioritized values at risk are: <ul style="list-style-type: none"> • Private property and residences • Hayden Creek and Hayden Lake Water Quality • Industrial timber lands, plantations, and Bottom Canyon Timber Sales (Idaho Forest Group) and other planned timber sales • Bonneville Power Administration Transmission Line • Hudlow Warming Hut • Chilco Mountain National Recreation Trail 			
7. Attachments (mark if attached)			
<input checked="" type="checkbox"/> Organization List - ICS 203	<input checked="" type="checkbox"/> Weather Forecast	<input checked="" type="checkbox"/> Messages Safety, Finance	
<input checked="" type="checkbox"/> Div. Assignment Lists - ICS 204	<input checked="" type="checkbox"/> Fire Behavior Forecast	<input checked="" type="checkbox"/> Messages Logs/Plans, READ	
<input checked="" type="checkbox"/> Communications Plan - ICS 205	<input checked="" type="checkbox"/> Incident Map	<input checked="" type="checkbox"/> Transportation Map & Hudlow Directions	
<input checked="" type="checkbox"/> Medical Plan - ICS 206	<input checked="" type="checkbox"/> Air Operations - ICS 220	<input checked="" type="checkbox"/> 205a, 206a, 214	
9. Prepared by (Planning Section Chief) Aaron Young – PSC(T)	9. Approved by (Incident Commander) IC 		

ORGANIZATION ASSIGNMENT LIST (ICS 203)

1. Incident Name: Ridge Creek		2. Operational Period		Date From: 08/19/23	Date To: 8/20/23
				Time From: 0600	Time To: 0600
3. Incident Commander(s) and Command Staff:			6. Logistics continued:		
IC/UC's	Steve Miller; Maris Gabliks (T)		Ground Support Unit	Willard Stanley, Jr.; Lindsay Larson (T)*	
Deputy	Chris Woods (T)*		BCMG	Tim Gallagher; Andrew Kenyon*;	
Safety Officer	Lee Osterland; Terry Trapp;			Tim Crowell (T)	
	Kent Glazer (T)			*-staff stationed at Hudlow	
Public Info. Officer	Clark McCreedy; Larry Bickel;				
	Brian Vanvickle				
Liaison Officer	Ron Robinson; Cecile Steller				
4. Agency/Organization Representatives:					
Agency/Organization	Name				
USFS	Randy Swick; Holly Hampton (T)				
IDL	Andrew Smyth; Erik Sjoquist				
Resource Advisors	Will Young; Matt Slifko;				
	Chris Robinson				
5. Planning Section:			7. Operations Section:		
Chief	Peter Fischer; Aaron Young(T)		Chief-Planning Ops	Joe Alyea; Darren Bridges (T)	
Deputy	Robbi Mecus*		Field Ops	Cory Henry*; Brian Wolvert (T)	
Resources Unit	Susan Thiel, Barry Reid (T); Matt Tonello (T)		Strategic Ops		
Situation Unit	Ben Garrett; Thomas Tarabelli(T)		Staging Area		
Documentation Unit	Lisa Spiess (T) -V		Divisions:		
Demobilization Unit	Wendy Christopher; Stacey Barnett		Division/Group	A	Todd Wood; Josh Strohmeier (T)
Technical Specialists	John Costello; Mark Erikson (T)*		Division/Group	E	unstaffed
GIS Specialist	Peter Rose; Justin Lamountain,		Division/Group	K	Beau Cartwright
Incident Meteorologist	Shane Eagan		Division/Group	Z	Chris White
Fire Behavior Analyst	Bill Aney		Division/Group	Structure	Steven Thime
6. Logistics Section:			Division/Group	Night	Rufus Davis Jr.
Chief	Scott Carrigan; Steve Schug		Division/Group		
Deputy			Air Operations Branch		
Communications Unit	Arnold Irvine		Air Ops Branch Dir.	John Fish	
Medical Unit	Robert White; Mike Passarelli		Air Support Supervisor	Caleb Schreiber(T)	
	Robert Eggert (T)*				
Ordering Manager	Chris Adamczyk-V;		8. Finance/Administration Section:		
	Laurie Meadows (T)		Chief	Mary Coleman; Peter Beringer -V	
Food Unit	Debby Berdine		Deputy		
Support Branch Director	Bryan Gallagher		Time Unit	Valarie Sanchez; Carole Wiekle (T)	
Supply	Joel Clark		Procurement Unit		
			Comp/Claims Unit	Farrah Scalora -V	
			Cost Unit	Jennifer Gallagher -V	
9. Prepared by: Name: <u>Susan J Thiel</u>			Position/Title: RESL	Signature: <i>Susan J Thiel</i>	
ICS 203 IAP Page			Date/Time: 08/18/23 11:20		



INCIDENT Weather Forecast



Forecast No: 10
 Prediction For: Saturday
 Shift Date: August 19, 2023
 Forecast Issued: August 18, 2023 at 1800

Name of Incident: Ridge Creek
 Unit: Idaho Panhandle NF
 Incident Meteorologist: Shane Eagan

Discussion: A bit cooler but still dry today. Winds will be less than previous days, generally out of the northeast, although expect much more terrain variability today into the overnight hours. Daily chances of precipitation begin late Sunday into next week.

Forecast for Today:

Sky/Weather:

Increasing clouds and dry

	Ridge Creek ICP 2,400'		Ridge Creek 3,400'		Spades 4,600'		
Max Temperature:	85		80		75		°F
Min RH:	15-19		16-20		16-21		%
Wind (20 FT):	Moderate inversion will begin to lift after 1000						
...	NE	6	NNE	5	ENE	7	mph
...	Gusts:	12	Gusts:	12	Gusts:	13	mph
Mixing Height:	6,500		6,500		7,000		ft AGL
Haines Index:	4		4		4		
LAL:	1		1		1		
Chance of Precipitation:	0		0		0		%
<hr/>							
Tonight's Min Temperature:	50		54		56		°F
Tonight's Max RH:	63-69		45-50		38-45		%
Tonight's Wind (20 FT):	Inversion will form after 1900, variable winds in drainages						
...	NE	6	NE	4	NE	5	mph
...	Gusts:	9	Gusts:	10	Gusts:	11	mph
Tonight's Mixing Height:	500		500		1,000		ft AGL
Tonight's LAL:	1		1		1		
Tonight's Chnc of Precip:	0		0		0		%

Forecast for Sunday:

Sky/Weather:

Increasing clouds. Chance of showers (~20%) after 1800. Precipitation will be isolated

	Ridge Creek ICP 2,400'		Ridge Creek 3,400'		Spades 4,600'		
Max / Min Temperature:	86	54	81	58	76	61	°F
Min / Max RH:	28	85	29	70	32	65	%
Wind (20 FT):	ENE winds; terrain variability						
...	NE	7	NE	7	NE	8	mph
...	Gusts:	13	Gusts:	13	Gusts:	14	mph
Mixing Height:	5,000		5,500		5,500		ft AGL
Haines Index:	4		LAL:	1	Precip Chance:		10

Extended Outlook:

Increasing moisture will result in better overnight RH recoveries and higher daytime RH. Daily chances of rain/storms will persist through the upcoming week; best chances Mon-Tue.

		Max T	Min T	Min RH	Max RH	Ridge Winds @ 1500	Weather
Ridge Creek 3,400'	Mon:	78	59	49	85	SE @ 8 G15	Cloudy, rain/storm chances
	Tue:	74	53	54	80	SW @ 11 G18	Cloudy, rain/storm chances
	Wed:	76	53	38	70	SW @ 9 G15	Partly cloudy, slight chc precip

IRAWS 44 - Spades: Use freq 163.350, key mic, enter 0044 to get Wx
 Please text weather obs to IMET (312-804-2926) or email shane.eagan@noaa.gov

FIRE BEHAVIOR FORECAST

FORECAST NUMBER: 11	INCIDENT TYPE: Wildland Fire
FIRE NAME: Ridge Creek	OPERATIONAL PERIOD: 0600 8/19/23 – 0600 8/20/23
DATE ISSUED: 8/18/2023	TIME ISSUED: 1400
UNIT: ID-IPF-000447	PREPARED BY: W.C. (Bill) Aney FBAN SIGNED: /s/ William C. Aney

INPUTS

WEATHER SUMMARY:

Moderating weather conditions today, with lighter winds and cooler temperatures but still quite dry.

FUELS & FUEL MOISTURE: Three fuel types dominate the fire area: GS2 is open forest on exposed slopes, with fire carried by litter, grass, and dry shrubs (oceanspray, ninebark). TU1 is more closed canopy forest on cooler slopes, with surface fuels of compact litter and branchwood. Open grown subalpine fir occurs at the highest ridgetops (South Chilco for example)

OUTPUTS - FIRE BEHAVIOR

Open west and south-facing slopes, ridges: expect spreading surface fire influenced by NNE winds, with short uphill runs, torching and short-range spotting. Expect an early start to the burn period due to continued poor overnight humidity recovery.

North and east slopes, heavier canopy: slower moving surface fire with limited torching and mid-range spotting.

Subalpine fir: individual and small group torching with prolific ember production and downwind spotting.

Fuel Type	Rate of Spread	Flame length	Prob Ignition	Spotting Distance
Grass/shrub/scattered timber (GS2)	23 ch/hr	5-6**	83%	.3mi
Timber Understory (TU1)	4-5 ch/hr	2'	56%	.4mi
Subalpine fir (FM10 - torching)		9.5'	56%	.4mi

*- exceeds capability of hand crews attempting direct head attack without support

The nearly 180 degree change in wind direction today will mostly impact Div K and the north half of Div A. The wind will be pushing back into what was the head of the fire, and will favor spread on uncontrolled south flanks (the west facing slope of South Chilco Peak and similar areas). Winds will be lighter than the past couple of days, but still are strong enough to drive fire behavior.

AIR OPERATIONS: Not as windy during the burn period today. Expect smoke in a morning inversion

SAFETY: Different areas may become the head of the fire today. Pay attention to overhead hazards as you work in new areas, especially where snags are present that may have been weakened by the past two days of wind.

****Base all action on current and expected fire behavior****

DIVISION ASSIGNMENT LIST			1. Branch		2. Division A (Page 1 / 3)	
3. Incident Name RIDGE CREEK			4. Operational Period From: 08/19/2023 0600 To: 8/20/2023 0600			
5. Operations Personnel						
Field Operations Section Chief		Cory Henry/Brian Wolvert (T)		Branch Director		
Planning Operations Section Chief		Joe Alyea/Darren Bridges (T)		Division Supervisor <i>Chris Hubbard</i>		Todd Wood 602-617-2017 Josh Strohmeyer (T) 779-240-0194
6. <i>C-32 CRW2 Dust Busters Crew 12</i> Resources Assigned This Period						
RO#	Strike Team/Task Force/ Resource Designator	Leader	# People	LWD	Drop Off PT./Time	Pick Up PT./Time
C-20	CRW1 Idaho Panhandle IHC	Sanders	21	8/25	Hudlow/0600	Hudlow/2200
C-7	CR21 Firestorm Wildland Fire NCC 7A	MacNorlie	20	8/21	Hudlow/0600	Hudlow/2200
C-11	CR2I Miller Timber	Yashima	20	8/22	Hudlow/0600	Hudlow/2200
C-25	CR21 Standing Rock	Hodgkiss	20	8/28	Hudlow/0600	Hudlow/2200
C-18	CRW2 Alpine Services	Torres	20	8/27	Hudlow/0600	Hudlow/2200
C-31	CRW2 Dust Busters Crew 12	Lugo	20	8/31		
O-94	FMOD West Wood LLC	Arvish	2	8/22	Hudlow/0600	Hudlow/2200
O-98	FMOD Brothers Fire LLC	Rosander	2	8/22	Hudlow/0600	Hudlow/2200
E-28	ENG6 ID-IPE 81	Owens	6	8/23	Hudlow/0600	Hudlow/2200
E-50	ENG6 SGS NORTH WEST LLC D34044	Sherlock	2	8/23	Hudlow/0600	Hudlow/2200
E-51	ENG6 SGS North West LLC A16185	Sherlock	2	8/23	Hudlow/0600	Hudlow/2200
E-52	ENG6 Funk Fire	Funk	<i>32</i>	8/23	Hudlow/0600	Hudlow/2200
E-53	ENG6 Northwest Mgt	Stutzman	3	8/20	Hudlow/0600	Hudlow/2200
7. Control Operations: TASK - Continue to secure control line on the entire division utilizing all forms of suppression tactics. PURPOSE - Keep fire west of FSR 406. END STATE - Stop easterly progression of fire beyond FSR 406.						
8. Special Instructions: Tactical and planned firing operations may take place in order to maintain control objectives. Review heat-related illness symptoms in the 2022 IRPG 110. Keep 3 to 1 water to Gatorade/Powerade ratio. Utilize field maps for drop points, safety zones, and potential helispots. Ensure that communications are functional throughout the entire division. Local engines are also available for IA.						
9. Division/Group Communication Summary						
Communications Summary						
Channel	Function	RX Frequency	RX Tone		TX Frequency	TX Tone
1 TAC 1	TAC	168.0500 N	110.9		168.0500 N	110.9
6 MICA BLM Primary	CMD	164.5250 N	NONE		163.0250 N	100.0
7 FS Monument Secondary	CMD	169.9250 N	107.2		165.5625 N	131.8
8 Cedar Peak	CMD	170.9750 N	110.9		168.7000 N	110.9
12 A/G Primary	A/G	167.1250 N	107.2		167.1250 N	NONE
13 A/G SECONDARY	A/G	166.6125 N	NONE		166.6125 N	NONE
16 Air Guard	AIRGUARD	168.6250 N	NONE		168.6250 N	110.9
Prepared by (Resource Unit Ldr) <i>Susan Thiel, RESL</i>				Date 08/18/2023	Time 2030	

To K

DIVISION ASSIGNMENT LIST			1. Branch		2. Division A (Page 2 / 3)	
3. Incident Name RIDGE CREEK			4. Operational Period From: 08/19/2023 0600 To: 8/20/2023 0600			
5. Operations Personnel						
Field Operations Section Chief		Cory Henry/Brian Wolverter (T)		Branch Director		
Planning Operations Section Chief		Joe Alyea/Darren Bridges (T)		Division Supervisor		Todd Wood 602-617-2017 Josh Strohmeyer (T) 779-240-0194
6. Resources Assigned This Period						
RO#	Strike Team/Task Force/ Resource Designator	Leader	# People	LWD	Drop Off PT./Time	Pick Up PT./Time
E-59	ENG6 Solomon Fire Equip C66420	Wing	3	8/22	Hudlow/0600	Hudlow/2200
Local	ENG6 Ocala T7	O'Brien	3	na	Hudlow/0600	Hudlow/2200
E-3	WTS2 St Florian	Madden	1	8/21	Hudlow/0600	Hudlow/2200
E-4	WTS2 Craig Martin 492771	Holliday	2	9/2	Hudlow/0600	Hudlow/2200
E-138	WTS2 St Regis VFD T7	Ahern	1	8/29	Hudlow/0600	Hudlow/2200
E-132	Wtt2 Tri-State Fire	Cruz	2	8/31	Hudlow/0600	Hudlow/2200
E-129	SKG1 Long Shot Logging	Eikert	2	8/28	Hudlow/0600	Hudlow/2200
E-31	DZR2 Patrick Madden S01069	Madden	2	8/20	Hudlow/0600	Hudlow/2200
E-133	DZR2 Chad Howell	Krista	2	8/27	Hudlow/0600	Hudlow/2200
E-32	XC2 Altered Aspects LLC A85027	Lindsey	2	8/20	Hudlow/0600	Hudlow/2200
E-8	EXC2 Fousts Inc. 35616	Gatchell	1	8/24	Hudlow/0600	Hudlow/2200
E-79	EXC2 J & P Idaho Services 2-1679	Kitchen	2	8/25	Hudlow/0600	Hudlow/2200
E-72	MBM1 Fousts C81065	Kramer	1	8/19	Hudlow/0600	Hudlow/2200
E-77	FEL1 Fousts A80052	Evans	1	8/24	Hudlow/0600	Hudlow/2200
7. Control Operations:						
TASK - Continue to secure control line on the entire division utilizing all forms of suppression tactics.						
PURPOSE - Keep fire west of FSR 406.						
END STATE - Stop easterly progression of fire beyond FSR 406.						
8. Special Instructions:						
Tactical and planned firing operations may take place in order to maintain control objectives.						
Review heat-related illness symptoms in the 2022 IRPG 110.						
Keep 3 to 1 water to Gatorade/Powerade ratio.						
Utilize field maps for drop points, safety zones, and potential helispots.						
Ensure that communications are functional throughout the entire division.						
Local engines are also available for IA.						
9. Division/Group Communication Summary						
Communications Summary						
Channel	Function	RX Frequency	RX Tone	TX Frequency	TX Tone	
1 TAC 1	TAC	168.0500 N	110.9	168.0500 N	110.9	
6 MICA BLM Primary	CMD	164.5250 N	NONE	163.0250 N	100.0	
7 FS Monument Secondary	CMD	169.9250 N	107.2	165.5625 N	131.8	
8 Cedar Peak	CMD	170.9750 N	110.9	168.7000 N	110.9	
12 A/G Primary	A/G	167.1250 N	107.2	167.1250 N	NONE	
13 A/G SECONDARY	A/G	166.6125 N	NONE	166.6125 N	NONE	
16 Air Guard	AIRGUARD	168.6250 N	NONE	168.6250 N	110.9	
Prepared by (Resource Unit Ldr) Susan Thiel				Date 08/18/2023	Time 2030	

Released from Div.

DIVISION ASSIGNMENT LIST			1. Branch		2. Division A (Page 3 / 3)	
3. Incident Name RIDGE CREEK			4. Operational Period From: 08/19/2023 0600 To: 8/20/2023 0600			
5. Operations Personnel						
Field Operations Section Chief		Cory Henry/Brian Wolverl (T)		Branch Director		
Planning Operations Section Chief		Joe Alyea/ Darren Bridges(T)		Division Supervisor		Todd Wood 602-617-2017 Josh Strohmeyer(T) 779-240-0194
6. Resources Assigned this Period						
RO#	Strike Team/Task Force/ Resource Designator	Leader	# People	LWD	Drop Off PT./Time	Pick Up PT./Time
A-67	UAR3	Black	1		Hudlow/600	Hudlow/2200
O-32	TFLD	Taylor	1	8/22	Hudlow/0600	Hudlow/2200
O-33	TFLD(t)	Hurrell	1	8/22	Hudlow/0600	Hudlow/2200
O-35	TFLD	Jerman	1	8/21	Hudlow/0600	Hudlow/2200
O-111	TFLD (t)	Primmer	1	8/22	Hudlow/0600	Hudlow/2200
O-89	HEQB	Schielke	1	8/24	Hudlow/0600	Hudlow/2200
O-90	HEQB(t)	Oikarinen	1	8/24	Hudlow/0600	Hudlow/2200
O-115	HEQB(t)	Vickers	1	8/25	Hudlow/0600	Hudlow/2200
O-139	SOFR	Chris OBrien	1	8/28	Hudlow /0600	Hudlow/2200
O-19	EMTF Wilderness Medics	Axel	1	8/20	Hudlow/0600	Hudlow/2200
O-171	EMPF Blacklands EMS Inc.	Keys	1	8/29	Hudlow/0600	Hudlow/2200
O-20	EMTF	Wolfstitch	1	8/20	Hudlow/0600	Hudlow/2200
E-122	AMB1 ALS-ID88IN Idaho Falls FD #847	King	2	8/27	Hudlow/0600	Hudlow/2200
7. Control Operations: TASK - Continue to secure control line on the entire division utilizing all forms of suppression tactics. PURPOSE - Keep fire west of FSR 406. END STATE - Stop easterly progression of fire beyond FSR 406.						
8. Special Instructions: Tactical and planned firing operations may take place in order to maintain control objectives. Review heat-related illness symptoms in the 2022 IRPG 110. Keep 3 to 1 water to Gatorade/Powerade ratio. Utilize field maps for drop points, safety zones, and potential helispots. Ensure that communications are functional throughout the entire division. Local engines are also available for IA.						
9. Division/Group Communication Summary						
Communications Summary						
Channel	Function	RX Frequency	RX Tone	TX Frequency	TX Tone	
1 TAC 1	TAC	168.0500 N	110.9	168.0500 N	110.9	
6 MICA BLM Primary	CMD	164.5250 N	NONE	163.0250 N	100.0	
7 FS Monument Secondary	CMD	169.9250 N	107.2	165.5625 N	131.8	
8 Cedar Peak	CMD	170.9750 N	110.9	168.7000 N	110.9	
12 A-G Primary	A/G	167.1250 N	107.2	167.1250 N	NONE	
13 A-G SECONDARY	A/G	166.6125 N	NONE	166.6125 N	NONE	
16 Air Guard	AIRGUARD	168.6250 N	NONE	168.6250 N	110.9	
Prepared by (Resource Unit Ldr) Susan Thiel				Date 08/18/2023	Time 1900	

DIVISION ASSIGNMENT LIST		1. Branch	2. Division E -UNSTAFFED			
3. Incident Name RIDGE CREEK		4. Operational Period From: 08/19/2023 0600 To: 8/20/2023 0600				
5. Operations Personnel						
Field Operations Section Chief	Cory Henry/Brian Wolverter (T)		Branch Director			
Planning Operations Section Chief	Joe Alyea/Darren Bridges (T)		Division Supervisor			
6. Resources Assigned this Period						
RO#	Strike Team/Task Force/ Resource Designator	Leader	# People	LWD	Drop Off PT./Time	Pick Up PT./Time
7. Control Operations:						
TASK- Keep fire east of Honey and Iron Creeks, utilizing indirect strategies to protect values at risk.						
PURPOSE- Prevent further fire spread into inaccessible areas.						
END STATE- Protection of critical values at risk.						
8. Special Instructions:						
Tactical firing operations may take place in order to maintain control objectives.						
Review heat-related illness symptoms in the 2022 IRPG page 10.						
Keep a 3 to 1 water to Gatorade/Powerade ration.						
Utilize field maps to drop points, safety zones, and potential helispots.						
Ensure that communications are functional throughout the entire division.						
9. Division/Group Communication Summary						
Communications Summary						
Channel	Function	RX Frequency	RX Tone	TX Frequency	TX Tone	
5 TAC 5	TAC	166.7750 N	110.9	166.7750 N	110.9	
6 BLM MICA	CMD	164.5250 N	NONE	163.0250 N	100.0	
7 FS MONUMENT	CMD	169.9250 N	107.2	165.5625 N	131.8	
8 CEDAR PEAK	CMD	170.9750 N	110.9	168.7000 N	110.9	
12 AIR TO GROUND PRIMARY	A/G	167.1250 N	NONE	167.1250 N	NONE	
13 AIR TO GROUND SECONDARY	A/G	166.6125 N	NONE	166.6125 N	NONE	
16 AIR GUARD	A/G	168.6250 N	NONE	168.6250 N	110.9	
Prepared by (Resource Unit Ldr) <i>Susan Thiel</i>				Date 08/18/2023	Time 2030	

DIVISION ASSIGNMENT LIST		1. Branch	2. Division K (Page 1 /2)			
3. Incident Name RIDGE CREEK		4. Operational Period From: 08/19/2023 0600 To: 8/20/2023 0600				
5. Operations Personnel						
Field Operations Section Chief	Cory Henry/Brian Wolvert (T)	Branch Director				
Planning Operations Section Chief	Joe Alyea/Darren Bridges (T)	Division Supervisor		Beau Cartwright 970-846-7628		
6. Resources Assigned This Period						
RO#	Strike Team/Task Force/ Resource Designator	Leader	# People	LWD	Drop Off PT./Time	Pick Up PT./Time
C-23	CRW2-PR-Reforestation C-9	Pantaleon	20	8/28	ICP/0600	ICP/2200
O-93	FMOD CZ Contracting	Babin	2	8/23	ICP/0600	ICP/2200
O-99	FMOD - Swedberg Contracting Corp.	Hileman	2	8/22	ICP/0600	ICP/2200
E-160	ENG6 C2M2	Hauge	3	8/29	ICP/0600	ICP/2200
E-27	HETF Bonnalle Logging Task Force	Tipitt	8	8/20	ICP/0600	ICP/2200
E-78	EXC2 Fousts Inc.	Unesh	1	8/23	ICP/0600	ICP/2200
E-124	MBM2 West Wood	West	1	8/27	ICP/0600	ICP/2200
O-200	TFLD	Doyle	1	9/1	ICP/0600	ICP/2200
O-91	TFLD(T)	Coppert	1	8/23	ICP/0600	ICP/2200
O-12	HEQB	Letscher	1	8/20	ICP/0600	ICP/2200
O-34	HEQB(T)	Harger	1	8/22	ICP/0600	ICP/2200
7. Control Operations:						
TASK - Keep fire east of Sage Creek by constructing indirect fire line from the Div Z/K break to the north utilizing FS 406U and favorable ridge lines.						
PURPOSE - To protect the Sage Creek area and prevent fire spread to the west.						
END STATE - Control line established to meet the needs of the planned tactics.						
8. Special Instructions:						
Tactical firing operations may take place in order to maintain control objectives.						
Review heat-related illness symptoms in 2022 IRPG page 110.						
Keep 3 to 1 water to Gatorade/Powerade ratio.						
Utilize field maps for drop points, safety zones, and potential helispots.						
Ensure that communications are functional throughout the entire division.						
9. Division/Group Communication Summary						
Communications Summary						
Channel	Function	RX Frequency	RX Tone	TX Frequency	TX Tone	
2 TAC2	TAC	168.2000 N	110.9	168.2000 N	110.9	
6 BLM MICA	CMD	164.5250 N	NONE	163.0250 N	100.0	
7 FS MONUMENT	CMD	169.9250 N	107.2	165.5625 N	131.8	
8 CEDAR PEAK	CMD	170.9750 N	110.9	168.7000 N	110.9	
12 AIR TO GROUND PRIMARY	A/G	167.1250 N	107.2	167.1250 N	NONE	
13 AIR TO GROUND SECONDARY	A/G	166.6125 N	NONE	166.6125 N	NONE	
16 AIR GUARD	A/G	168.6250 N	NONE	168.6250 N	110.9	
Prepared by (Resource Unit Ldr) Susan Thiel				Date 08/18/2023	Time 2030	

To Z

C-20 CR2I Idaho PI4 Sanders 22

DIVISION ASSIGNMENT LIST			1. Branch		2. Division K (page 2 /2)	
3. Incident Name RIDGE CREEK			4. Operational Period From: 08/19/2023 0600 To: 8/20/2023 0600			
5. Operations Personnel						
Field Operations Section Chief		Cory Henry/ Brian Wolvert (T)		Branch Director		
Planning Operations Section Chief		Joe Alyea/Darren Bridges (T)		Division Supervisor		Beau Cartwright 970-846-7628
6. Resources Assigned this Period						
RO#	Strike Team/Task Force/ Resource Designator	Leader	# People	LWD	Drop Off PT./Time	Pick Up PT./Time
0-78	SOFR (T)	Sean O'Brien	1	8/24	ICP/0600	ICP/2200
0-172	EMPF North Fork Medics	Wallace	1	8/29	ICP/0600	ICP/220
0-174	EMPF Minuteman EMS	Kemmerer	1	8/29	ICP/0600	ICP/220
7. Control Operations: TASK - Keep fire east of Sage Creek by constructing indirect fire line from the Div Z/K break to the north utilizing FS 406U and favorable ridge lines. PURPOSE - To protect the Sage Creek area and prevent fire spread to the west. END STATE - Control line established to meet the needs of the planned tactics.						
8. Special Instructions: Tactical firing operations may take place in order to maintain control objectives. Review heat-related illness symptoms in 2022 IRPG page 110. Keep 3 to 1 water to Gatorade/Powerade ratio. Utilize field maps for drop points, safety zones, and potential helispots. Ensure that communications are functional throughout the entire division.						
9. Division/Group Communication Summary						
Communications Summary						
Channel	Function	RX Frequency	RX Tone		TX Frequency	TX Tone
2 TAC2	TAC	168.2000 N	110.9		168.2000 N	110.9
6 BLM MICA	CMD	164.5250 N	NONE		163.0250 N	100.0
7 FS MONUMENT	CMD	169.9250 N	107.2		165.5625 N	131.8
8 CEDAR PEAK	CMD	170.9750 N	110.9		168.7000 N	110.9
12 AIR TO GROUND PRIMARY	A/G	167.1250 N	107.2		167.1250 N	NONE
13 AIR TO GROUND SECONDARY	A/G	166.6125 N	NONE		166.6125 N	NONE
16 AIR GUARD	A/G	168.6250 N	NONE		168.6250 N	110.9
Prepared by (Resource Unit Ldr) <i>Susan Thiel</i>				Date	Time	
				08/18/2023	2030	

DIVISION ASSIGNMENT LIST		1. Branch	2. Division Z (Page 1 / 4)			
3. Incident Name RIDGE CREEK		4. Operational Period From: 08/19/2023 0600 To: 8/20/2023 0600				
5. Operations Personnel						
Field Operations Section Chief Cory Henry/Brian Wolvert (T)		Branch Director				
Planning Operations Section Chief C-23 CRW2 P.R. Request Joe Alyea/ Darren Bridges (T)		Division Supervisor Pantaleon 20 8/28		Chris White 541-517-6065		
6. Resources Assigned this Period C-33 CRW2 Dust Busters Hazmat 20 9/2						
RO#	Strike Team/Task Force/ Resource Designator	Leader	# People	LWD	Drop Off PT./Time	Pick Up PT./Time
C-8	CRW1 Black Mountain IHC	Gill	20	8/22	ICP/0600	ICP/2200
C-22	CRW2 Iron Mountain	Zavala	20	8/28	ICP/0600	ICP/2200
C-30	CRW2 Dust Busters Crew 10	Fabrick	20	9/1	ICP/0600	ICP/2200
O-13	FMOD Bailey Fallers – MOD1	Newman	2	8/18	ICP/0600	ICP/0600
O-92	FMOD - White Horse Forestry, Inc.	Mehaffey	2	8/23	ICP/0600	ICP/2200
E-6	ENG6 NDND5 E5274	Mountain	4	8/19	ICP/0600	ICP/2200
	ENG6 IPF FS641	White	3	8/29	ICP/0600	ICP/2200
E-156	ENG6 Inland Forest Mgt.	Radcliffe	3	8/29	ICP/0600	ICP/2200
E-185	WTT2 ID1TPN Teton County FPD #E411	Plennes	2	8/31	ICP/0600	ICP/2200
E-9	WTS2 Sagle-FD 1271	Stuckey	2	8/18	ICP/0600	ICP/2200
E-182	WTS2 Sommers Contracting	Sommers	1	9/1	ICP/0600	ICP/2200
E-130	WTS2 Richardson Tree Care 418408	Richardson	1	8/27	ICP/0600	ICP/2200
7. Control Operations: TASK -Secure control lines that have been established ensuring that the conditions of lines are adequate for the strategies proposed. PURPOSE - Keep fire north of FSR 437 and east of the north fork of the Hayden Creek to protect private residences and industrial land to the southwest. END STATE- Stop southerly and westerly progression of the fire beyond FSR 206.						
8. Special Instructions: Tactical and planned firing operations may take place in order to maintain control objectives. Review heat-related illness symptoms 2022 IRPG Page 110. Keep 3 to 1 water to Gatorade/Powerade ratio. Utilize field maps for drop points, safety zones, and potential helispots. Ensure that comms are functional throughout the entire division. Maintain Situational Awareness around heavy equipment operations.						
9. Division/Group Communication Summary						
Communications Summary						
Channel	Function	RX Frequency	RX Tone	TX Frequency	TX Tone	
3 TAC 3	TAC	168.6000 N	110.9	168.6000 N	110.9	
6 MICA BLM	COMMAND	164.5250 N	NONE	163.0250 N	100.0	
7 Monument FS-Secondary	COMMAND	169.9250 N	107.2	165.5625 N	131.8	
8 Cedar Peak	CMD	170.9750	110.9	168.7000 N		
12 A/G Primary	A/G	167.1250 N	107.2	167.1250 N	NONE	
13 A/G SECONDARY	A/G	166.6125 N	NONE	166.6125 N	NONE	
16 Air Guard	AIRGUARD	168.6250 N	NONE	168.6250 N	110.9	
Prepared by (Resource Unit Ldr) Susan Thiel				Date 08/18/2023	Time 1900	

Demob

DIVISION ASSIGNMENT LIST			1. Branch		2. Division Z (Page 2 / 4)	
3. Incident Name RIDGE CREEK			4. Operational Period From: 08/19/2023 0600 To: 8/20/2023 0600			
5. Operations Personnel						
Field Operations Section Chief		Cory Henry/Brian Wolvert (T)		Branch Director		
Planning Operations Section Chief		Joe Alyea/ Darren Bridges (T)		Division Supervisor		Chris White 541-517-6065
6. Resources Assigned this Period						
RO#	Strike Team/Task Force/ Resource Designator	Leader	# People	LWD	Drop Off PT./Time	Pick Up PT./Time
E-131	WTS2 Teresas H2O To Go LLC - A30824	Moss	1	8/28	ICP/0600	ICP/2200
E-1	DZR2 Fousts Inc N00574ZR2	Newcomer	1	9/1	ICP/0600	ICP/2200
E-2	EXC2 Fousts Inc 35653	Bennett	1	9/1	ICP/0600	ICP/2200
E-7	GRD1 Foust Inc. L00652	Kramer	1	8/18	ICP/0600	ICP/2200
E-25	HETF Akre Logging Akre 1	Akre	7	8/20	ICP/0600	ICP/2200
E-60	DUMP Joe Hester Logging	Irvine	1	8/23	ICP/0600	ICP/2200
E-61	FRNT Joe Hester Logging	Schopp	1	8/23	ICP/0600	ICP/2200
E-68	LOGL Tracked Log Loader	Hester	2	8/26	ICP/0600	ICP/2200
E-69	LOGL Akre Logging	Blake	2	8/23	ICP/0600	ICP/2200
E-71	LOGT Akre Logging	Randolph	1	8/25	ICP/0600	ICP/2200
E-73	LOGP Akre Logging		2	8/23	ICP/0600	ICP/2200
E-28	ENG4 IPF E-432	Owens	6			
E-183	WTS2 Jared Lewis	Lewis	1			
E-184	WTT2 Utah Fire	Justice	2			
7. Control Operations: TASK -Secure control lines that have been established ensuring that the conditions of lines are adequate for the strategies proposed. PURPOSE - Keep fire north of FSR 437 and east of the north fork of the Hayden Creek to protect private residences and industrial land to the southwest. END STATE- Stop southerly and westerly progression of the fire beyond FSR 206.						
8. Special Instructions: Tactical and planned firing operations may take place in order to maintain control objectives. Review heat-related illness symptoms 2022 IRPG Page 110 . Keep 3 to 1 water to Gatorade/Powerade ratio. Utilize field maps for drop points, safety zones, and potential helispots . Ensure that comms are functional throughout the entire division. Maintain Situational Awareness around heavy equipment operations.						
9. Division/Group Communication Summary						
Communications Summary						
Channel	Function	RX Frequency	RX Tone	TX Frequency	TX Tone	
3 TAC 3	TAC	168.6000 N	110.9	168.6000 N	110.9	
6 MICA BLM	COMMAND	164.5250 N	NONE	163.0250 N	100.0	
7 Monument FS-Secondary	COMMAND	169.9250 N	107.2	165.5625 N	131.8	
8 Cedar Peak	CMD	170.9750 N	110.9	168.7000 N	110.9	
12 A/G Primary	A/G	167.1250 N	107.2	167.1250 N	NONE	
13 A/G SECONDARY	A/G	166.6125 N	NONE	166.6125 N	NONE	
16 Air Guard	AIRGUARD	168.6250 N	NONE	168.6250 N	110.9	
Prepared by (Resource Unit Ldr) Susan Thiel				Date 08/18/2023	Time 1730	

DIVISION ASSIGNMENT LIST		1. Branch	2. Division Z (Page 3 / 4)			
3. Incident Name RIDGE CREEK		4. Operational Period From: 08/19/2023 0600 To: 8/20/2023 0600				
5. Operations Personnel						
Field Operations Section Chief	Cory Henry/Brian Wolvert (T)	Branch Director				
Planning Operations Section Chief	Joe Alyea/ Darren Bridges (T)	Division Supervisor		Chris White 541-517-6065		
6. Resources Assigned this Period						
RO#	Strike Team/Task Force/ Resource Designator	Leader	# People	LWD	Drop Off PT./Time	Pick Up PT./Time
O-88	TFLD (t)	Mefford	1	8/23	ICP/0600	ICP/2200
O-161	TFLD	Walker	1	8/30	ICP/0600	ICP/2200
O-163	TFLD	Berger	1	8/29	ICP/0600	ICP/2200
O-183	TFLD (T)	Wilson	1	8/31	ICP/0600	ICP/2200
O-25	HEQB	Rexrode	1	8/22	ICP/0600	ICP/2200
O-134	HEQB (t)	Schumacher	1	8/18	ICP/0600	ICP/2200
O-170	HEQB	Courson	1	8/27	ICP/0600	ICP/2200
O-38	HEQB (t)	Hess	1	8/21	ICP/0600	ICP/2200
7. Control Operations: TASK -Secure control lines that have been established ensuring that the conditions of lines are adequate for the strategies proposed. PURPOSE - Keep fire north of FSR 437 and east of the north fork of the Hayden Creek to protect private residences and industrial land to the southwest . END STATE- Stop southerly and westerly progression of the fire beyond FSR 206.						
8. Special Instructions: Tactical and planned firing operations may take place in order to maintain control objectives. Review heat-related illness symptoms 2022 IRPG Page 110 . Keep 3 to 1 water to Gatorade/Powerade ratio. Utilize field maps for drop points, safety zones, and potential helispots. Ensure that comms are functional throughout the entire division. Maintain Situational Awareness around heavy equipment operations.						
9. Division/Group Communication Summary						
Communications Summary						
Channel	Function	RX Frequency	RX Tone	TX Frequency	TX Tone	
3 TAC 3	TAC	168.6000 N	110.9	168.6000 N	110.9	
6 MICA BLM	COMMAND	164.5250 N	NONE	163.0250 N	100.0	
7 Monument FS-Secondary	COMMAND	169.9250 N	107.2	165.5625 N	131.8	
8 Cedar Peak	CMD	170.9750 N	110.9	168.7000 N	110.9	
12 A/G Primary	A/G	167.1250 N	107.2	167.1250 N	NONE	
13 A/G SECONDARY	A/G	166.6125 N	NONE	166.6125 N	NONE	
16 Air Guard	AIRGUARD	168.6250 N	NONE	168.6250 N	110.9	
Prepared by (Resource Unit Ldr(t)) Susan Thiel				Date 08/18/2023	Time 1900	

Demab

DIVISION ASSIGNMENT LIST		1. Branch	2. Division Z (Page 4 / 4)			
3. Incident Name RIDGE CREEK		4. Operational Period From: 08/19/2023 0600 To: 8/20/2023 0600				
5. Operations Personnel						
Field Operations Section Chief	Cory Henry/Brian Wolvert (T)	Branch Director				
Planning Operations Section Chief	Joe Alyea/ Darren Bridges (T)	Division Supervisor			Chris White 541-517-6065	
6. Resources Assigned this Period						
RO#	Strike Team/Task Force/ Resource Designator	Leader	# People	LWD	Drop Off PT./Time	Pick Up PT./Time
O-137	SOFR	Bunce	1	8/28	ICP/0600	ICP/2200
O-138	SOFR (t)	Canning	1	8/29	ICP/0600	ICP/2200
O-166	EMTF	McGuire	1	8/26	ICP/0600	ICP/2200
E-80	RAT MESU Kootenai Fire & Rescue	Miller <i>Whaley</i>	2	8/23	ICP/0600	ICP/2200
O-103	REMS MESU NIM Medical	Mason	4	8/23	ICP/0600	ICP/2200
E-155	AMB1 ALS Boundary	Hartman	2	8/29	ICP/0600	ICP/2200
7. Control Operations: TASK -Secure control lines that have been established ensuring that the conditions of lines are adequate for the strategies proposed PURPOSE - Keep fire north of FSR 437 and east of the north fork of the Hayden Creek to protect private residences and industrial land to the southwest END STATE- Stop southerly and westerly progression of the fire beyond FSR 206 206						
8. Special Instructions: Tactical and planned firing operations may take place in order to maintain control objectives Review heat-related illness symptoms 2022 IRPG Page 110 Keep 3 to 1 water to Gatorade/Powerade ratio. Utilize field maps for drop points, safety zones, and potential helispots Ensure that comms are functional throughout the entire division. Maintain Situational Awareness around heavy equipment operations.						
9. Division/Group Communication Summary						
Communications Summary						
Channel	Function	RX Frequency	RX Tone	TX Frequency	TX Tone	
3 TAC 3	TAC	168.6000 N	110.9	168.6000 N	110.9	
6 MICA BLM	COMMAND	164.5250 N	NONE	163.0250 N	100.0	
7 Monument FS-Secondary	COMMAND	169.9250 N	107.2	165.5625 N	131.8	
8 Cedar Peak	CMD	170.9750 N	110.9	168.7000 N	110.9	
12 A/G Primary	A/G	167.1250 N	107.2	167.1250 N	NONE	
13 A/G SECONDARY	A/G	166.6125 N	NONE	166.6125 N	NONE	
16 Air Guard	AIRGUARD	168.6250 N	NONE	168.6250 N	110.9	
Prepared by (Resource Unit Ldr(t)) <i>Susan Thiel</i>				Date 08/18/2023	Time 1900	

DIVISION ASSIGNMENT LIST			1. Branch		2. Division Structure	
3. Incident Name RIDGE CREEK			4. Operational Period From: 08/19/2023 0600 To: 8/20/2023 0600			
5. Operations Personnel						
Field Operations Section Chief		Cory Henry/Brian Wolvert (T)		Branch Director		
Planning Operations Section Chief		Joe Alyea/Darren Bridges (T)		Division Supervisor		Steven Thime-STPS 719-660-5567
6. Resources Assigned this Period						
RO#	Strike Team/Task Force/ Resource Designator	Leader	# People	LWD	Drop Off PT./Time	Pick Up PT./Time
E-172	ENG6 Daniel Martin 512150	Martin	3	8/31	ICP/0600	ICP/2200
E-173	ENG6 Days LLC	Keller	3	8/30	ICP/0600	ICP/2200
E-175	ENG6 Fire Control Resources	Marsali	3	9/1	ICP/0600	ICP/2200
E-158	ENG6 Roy Ingraham	Manyhides	3	8/31	ICP/0600	ICP/2200
O-109	FOBS	Parker	1	8/26	ICP/0600	ICP/2200
O-185	STEN	Belmont	1	8/28	ICP/0600	ICP/2200
E-179	Bishop ENG 6	Kirkaldie	3			
E-180	Bishop ENG 6	Lamebull	3			
E-191	ENG 6 Bishop	?	?			
7. Control Operations: TASK - Coordinate with interagency cooperators for structure protection planning. PURPOSE - Develop cohesive strategies amongst responding and coordinating agencies. END STATE - Structure protection plan developed by all cooperators that can be easily implemented that can be easily implemented now and into the future.						
8. Special Instructions: Utilize field maps to complete structure assessments. Review heat-related illness symptoms 2022 IRPG Page 110. Keep 3 to 1 water to Gatorade/Powerade ratio. Be prepared for traffic and public interactions in the wildland urban interface.						
9. Division/Group Communication Summary						
Communications Summary						
Channel	Function	RX Frequency	RX Tone	TX Frequency	TX Tone	
4 TAC 4	TAC	166.7250 N	110.9	166.7250 N	110.9	
6 BLM MICA	CMD	164.5250 N	NONE	163.0250 N	100.0	
7 FS MONUMENT	CMD	169.9250 N	107.2	165.5625 N	131.8	
8 CEDAR PEAK	CMD	170.9750 N	110.9	168.7000 N	110.9	
12 AIR TO GROUND PRIMARY	A/G	167.1250 N	107.2	167.1250 N	NONE	
13 AIR TO GROUND SECONDARY	A/G	166.6125 N	NONE	166.6125 N	NONE	
16 AIR GUARD	AIRGUARD	168.6250 N	NONE	168.6250 N	110.9	
Prepared by (Resource Unit Ldr) <i>Susan Thiel</i>				Date 08/18/2023	Time 2030	

DIVISION ASSIGNMENT LIST			1. Branch	2. Division Night		
3. Incident Name RIDGE CREEK			4. Operational Period From: 08/19/2023 0600 To: 8/20/2023 0600			
5. Operations Personnel						
Field Operations Section Chief	Cory Henry/Brian Wolvert (T)		Branch Director			
Planning Operations Section Chief	Joe Alyea/Darren Bridges (T)		Division Supervisor		Rufus Davis 352-427-0929	
6. E-177 ENG6 Bishop Resources Assigned this Period						
RO#	Strike Team/Task Force/ Resource Designator	Leader	# People	LWD	Drop Off PT./Time	Pick Up PT./Time
C-5	CRW1 Klamath IHC	Owensbey	19	8/21	ICP/1800	ICP/0600
E-54	ENG6 Castle Mountain D83273	Tsosie	3	8/22	ICP/1800	ICP/0600
E-55	ENG6 Bakken Robert	Bakken	3	8/22	ICP/1800	ICP/0600
E-57	ENG6 Castle Mountain C19623	Cork	3	8/23	ICP/1800	ICP/0600
E-58	ENG6 Solomons Fire Equip 299099	Hawley	3	8/23	ICP/1800	ICP/0600
E-157	ENG6 Windswept Wildfire	Grayson	3	8/31	ICP/1800	ICP/0600
E-159	ENG6 Daroche	Daroche	3	8/31	ICP/1800	ICP/0600
O-162	TFLD	Daugherty	1	8/30	ICP/1800	ICP/0600
O-136	SOFR	Carpenter	1	8/27	ICP/1800	ICP/0600
O-195	SOFR (t)	Gregory	1	8/31	ICP/1800	ICP/0600
O-96	EMPF	Allen	1	8/24	ICP/1800	ICP/0600
O-173	EMPF	Orde	1	8/30	ICP/1800	ICP/0600
7. Control Operations: TASK - Monitor fire behavior from a safe vantage point and support potential firing operations when needed. PURPOSE - Observe and report any fire movement that threatens the control lines. END STATE - Ensure fire remains inside established control lines.						
8. Special Instructions: Ridge Creek communications is staffed 24 hours per day. Ensure that comms are functional throughout the entire group. Limit driving along mountainous roads. IMT night contact is Planning Operations Section Chief						
9. Division/Group Communication Summary						
Communications Summary						
Channel	Function	RX Frequency	RX Tone	TX Frequency	TX Tone	
5 TAC 5	TAC	166.7750 N	110.9	166.7750 N	110.9	
6 BLM MICA	COMMAND	164.5250 N	NONE	163.0250 N	100.0	
7 FS MONUMENT	COMMAND	169.9250 N	107.2	165.5625 N	131.8	
8 CEDAR PEAK	COMMAND	170.9750 N	110.9	168.7000 N	110.9	
10 MICA FS	COMMAND	169.9250 n	107.2	165.5625 N	167.9	
12 AIR TO GROUND PRIMARY	A/G	167.1250 N	107.2	167.1250 N	NONE	
13 AIR TO GROUND SECONDARY	A/G	166.6125 N	NONE	166.6125 N	NONE	
16 Air Guard	AIRGUARD	168.6250 N	NONE	168.6250 N	110.9	
Prepared by (Resource Unit Ldr) <i>Susan Thiel</i>				Date 08/18/2023	Time 2030	

AIR OPERATIONS SUMMARY 220		Prepared By: John Fish, AOB		Prepared: 08/18/2023		Prepared Time: 1630 hrs.	
INCIDENT NAME: Ridge Creek Fire		OPERATIONAL PERIOD 8/19/23		START TIME 0900	END TIME 2000	SUNRISE 0548	SUNSET 1952

REMARKS	MEDICAL RESPONSE AIRCRAFT	TFR
-All aircraft orders thru Air Attack if on scene, otherwise thru AOB		Ridge Creek 3/3347
-Large Electric Transmission Line through center of fire area		8,000 feet MSL.
-Retardant restricted in pre-designated avoidance areas and Chilco Trail ridge to the NE	* Follow Medical Plan ICS-206 *	24 Hours
		Freq. 119.15

PERSONNEL	NAME	PHONE #	FREQUENCIES	AM	FM	FIXED-WING Avail/ Type/ Make-Model/ N#/ Base
AOBD	John Fish	850-843-0977	A/G PRI		167.1250	ATGS Platforms: N690CP Call Sign - AA690 - assigned to fire N197GB Call Sign - AA115
ASGS(T)	Caleb Schreiber	715-628-6999	A/G SEC		166.6125	F/W Bases: Coeur d'Alene Airport (COE)
ATGS (AA690) ATGS (AA115)	Mark Winkelman Mike Bagan	775-848-9983 208-446-6770	A/G Marine Hayden Lake		169.5000	R/W Bases: Coeur d'Alene Airport (COE) Sand Point
UAS Modules UR31 UR32	Jordan Black Tim Gibilisco	865-250-3128 541-307-7177	KCOE Tower KCOE Ground Air-Air PRI Air-Air SEC	120.125 127.000 119.150 127.200		Air Tankers LATs - T-105 & T-132 SEATs - FB-205, FB-206, FB-217, FB-219 Scoopers - CL415s - S-261, S-262

HELICOPTERS

FAA N#	TY	MAKE/ MODEL	BASE	START	AVAIL	REMARKS	FAA N#	TY	MAKE/ MODEL	BASE	START	AVAIL	REMARKS
N258PJ	1	CH-47D	COE	0800	0900	Bucket	N214KA	2	B212	COE	0800	0900	Bucket
N214B	1	B214	Sand Point	0800	0900	Bucket	N28HX	2	B205+	COE	0800	0900	Bucket/Rappel
N274TH	1	UH-60A+	COE	0800	0900	Bucket	N777TD	3	B407	COE	0800	0900	Bucket/Recon
N357KA	1	K-MAX	COE	0800	0900	Bucket assigned to fire	N102RF	3	AS350B2	COE	0800	0900	Bucket/Recon
N2773H	2	B205++	COE	0800	1200	Bucket assigned to fire							

**Ridge Creek Fire
EA Silver Team Phone List**

Position	Name	Cell
Incident Commander	Steve Miller	414-308-6861
Deputy Incident Commander (trainee)	Chris Woods	573-315-8394
Incident Commander (trainee)	Maris Gabliks	609-235-7524
Safety Officer	Lee Osterland	231-357-7381
Safety Officer	Terry Trapp	715-610-3695
Safety Officer (trainee)	Kent Glazer	715-340-0891
Safety Officer Line	Craig Bunce	626-808-1270
Safety Officer Line	Sean Obrien	732-690-9715
Safety Officer Line	Tim Carpenter	607-664-1021
Safety Officer Line	Chris O'Brien	603-419-9153
Safety Officer Line (trainee)	David Canning	231-878-5919
Fire Information	FireNet	208-953-7022
Public Information Officer	Clark McCreedy	989-292-9373
Public Information Officer	Brian VanVickle	815-994-8522
Liaison Officer	Ron Robinson	612-860-1257
Liaison Officer	Cecile Stelter	814-688-7133
Operations Section Chief	Joe Alyea	509-671-1610
Operations Section Chief	Cory Henry	906-280-4144
Air Operations Branch Director	John Fish	850-843-0977
Planning Section Chief	Robbi Mecus	518-524-6622
Planning Section Chief	Peter Fischer	304-618-9083
Planning Section Chief (trainee)	Aaron Young	608-558-5844
Check-In/Demob	General	208-891-6074
Logistics Section	General	208-891-6611
Medical Unit Leader	Robert White	715-415-2400
Medical Unit Leader	Mike Passarelli	330-633-0547
Medical Unit Leader (trainee)	Robert Eggert	708-691-2313
Communications Unit	Arnold Irvine	814-730-0389
Communications- NIGHT	Night	208-891-6392
Finance Section	FireNet	208-510-5158
Hudlow Base Satellite Phone	IC	941-248-0924
Hudlow Base Satellite Phone	Operations	619-775-3172
Hudlow Base Satellite Phone	Safety	858-324-3773

INCIDENT RADIO COMMUNICATIONS PLAN (ICS 205)

Controlled Unclassified Information//Basic

1. Incident Name: Ridge Creek Fire		2. Date/Time Prepared: 08/18/23 1345		3. Operational Period: DAY SHIFT		Date/Time From: 08/19/23 0600	Date/Time To: 08/20/23 0600				
4. Basic Radio Channel Use:											
Zone Group	Ch #	Function	Channel Name	Assignment	RX Freq	RX Tone/NAC	TX Freq	TX Tone/NAC	Mode (A, D, or M)	Remarks	
1	1	TACTICAL	TAC 1	DIV A	168.0500 N	110.9	168.0500 N	110.9	A		
1	2	TACTICAL	TAC 2	DIV K	168.2000 N	110.9	168.2000 N	110.9	A		
1	3	TACTICAL	TAC 3	DIV Z	168.6000 N	110.9	168.6000 N	110.9	A		
1	4	TACTICAL	TAC 4	STRUCTURE GROUP	166.7250 N	110.9	166.7250 N	110.9	A		
1	5	TACTICAL	TAC 5	DIV E	166.7750 N	110.9	166.7750 N	110.9	A	UNSTAFFED	
1	6	COMMAND	MICA/BLM	ALL DIVS	164.5250 N	NONE	163.0250 N	100.0	A	BLM MICA RPTR	
1	7	COMMAND	MONUMENT	ALL DIVS	169.9250 N	107.2	165.5625 N	131.8	A	FFS MONUMENT SECONDARY	
1	8	COMMAND	CEDAR PK	ALL DIVS	170.9750 N	110.9	168.7000 N	110.9	A	Cedar peak primary day only	
1	9	TACTICAL	AVG Marine	Marine Group	169.5000 N	NONE	169.5000	NONE	A	Boat to scooper coordination	
1	10	COMMAND	MICA FS	ALL DIVS	169.9250 N	107.2	165.5625 N	167.9	A	Night shift only SECONDARY	
1	12	TACTICAL	AVG PRIMARY	ALL DIVS	167.1250 N	107.2	167.1250 N	NONE	A	AVG PRIMARY	
1	13	TACTICAL	A/G SECONDARY	ALL DIVS	166.6125 N	NONE	166.6125 N	NONE	A	A/G SECONDARY	
1	14	EMS	EMS	EMS 2	155.2800 N	NONE	155.2800 N	136.7	A	EMS 2	
1	16	AIR GUARD	AIR GUARD	ALL DIVS	168.6250 N	NONE	168.6250 N	110.9	A	EMERGENCY CALL TO AIRCRAFT	
5. Special Instructions:											
6. Prepared By: Communications Unit Leader		Name: ARNIE IRVINE		Signature: /s/ Arnie Irvine		Date/Time 8/18/23 1345					

MEDICAL PLAN (ICS 206 WF)

Controlled Unclassified Information//Basic

1. Incident/Project Name		2. Operational Period			
Ridge Creek Fire		Date/Time 0600 – 0600		8/19/2023 to 8/20/2023	
3. Ambulance Services					
Name	Complete Address	Phone & EMS Frequency	Advanced Life Support (ALS) Yes No		
Timber Lake Fire Protection	5984 E Highway 54 Athol Id 54 west of 95	208-772-3283	<input type="checkbox"/>	<input checked="" type="checkbox"/>	
Dispatch		573-210-7073	<input checked="" type="checkbox"/>	<input type="checkbox"/>	
4. Air Ambulance Services					
Name	Phone	Type of Aircraft & Capability			
Life Flight	208-772-3283	Hayden or Sandpoint ID			
Short Haul or Hoist	208-772-3283	Through Coeur d Alene Dispatch			
Agency Helo	208-772-3283	USFS Coeur d Alene Dispatch			
5. Hospitals					
Name Complete Address	GPS Datum – WGS 84 Coordinate Standard Degrees Decimal Minutes DD° MM.MMM' N - Lat DD° MM.MMM' W - Long	Travel Time Air Gnd	Phone	Helipad Yes No	Level of Care Facility
Kootenai General Hospital 2003 Kootenai Health Way, Coeur d'Alene ID	Lat: 47 45.658 N	15 min 30 min	208-625-4000	<input checked="" type="checkbox"/> <input type="checkbox"/>	Level 2 Trauma
	Long: 116 47 41.684W				
	VHF:				
Bonner General Hospital 520 N Third Ave, Sandpoint, ID	Lat: 48 16.650	15 min 60 min	208-263-1441	<input checked="" type="checkbox"/> <input type="checkbox"/>	Level 4 Trauma
	Long: 116 32.92				
	VHF:				
Sacred Heart Medical 101 W Eighth Ave, Spokane WI	Lat: 47 38.500	25 min 120 min	509-474-3131	<input checked="" type="checkbox"/> <input type="checkbox"/>	Level 2 Trauma
	Long: 117 24.800				
	VHF:				
Harborview Medical Center Seattle Wa.	Lat: 47 36.238	120 min 300 min	206-744-3074 206744-5735 Burn center #	<input checked="" type="checkbox"/> <input type="checkbox"/>	Level 1 Trauma & Burn Center
	Long: 122 19.461				
	VHF:				
Northwest Urgent Care 7173 E Super I Loop Suite A Athol, ID Intersection of 54 &95	Lat: 47.950879	10 min	208-561-9970	<input type="checkbox"/> <input checked="" type="checkbox"/>	Urgent care only Hours: 0800-1800 M-F 0800-1600 S-S
	Long: -116.694570				
6. Division Branch Group		Area Location Capability			
A		Point of Contact:		O-19 EMTF (Wolfstitch) (520)508-9807 & O-20 EMTF (Axel) (612) 532-5181 & E-122 Idaho Falls Ambulance ALS (Hirschi) (208) 221-6979 & O-171 EMPF (Keys) (520) 395-6832	
		EMS Responders & Capability:		BLS & ALS	
		Equipment Available on Scene:		BLS & ALS & Ambulance	
		Medical Emergency Channel:		Cedar Peak	
		ETA for Ambulance to Scene:			
		Air:		40min	
		Ground:		10 min to the Alpha/Zulu Break	
		Approved Helispot:		H-90 H-70	
		Lat:		N47 49.490 N47 50.335	
		Long:		116 35.685 116 33.685	

MEDICAL PLAN (ICS 206 WF)

Controlled Unclassified Information//Basic

K	Point of Contact:	O-174 EMPF (Kemmerer) (321)750-1197 & O-172 EMPF(Wallace)(406) 239-1811		
	EMS Responders & Capability:	ALS		
	Equipment Available on Scene:	ALS		
	Medical Emergency Channel:	Cedar Peak		
	ETA for Ambulance to Scene:			
	Air:			
	Ground:			
	Approved Helispot	H-50	H-44	
	LAT:	47 51'757 N	47 52.090N	
	Long:	116 33'295W	116 35.503W	
E	Point of Contact:	Unstaffed		
	EMS Responders & Capability:			
	Equipment Available at Scene:			
	Medical Emergency Channel	Cedar Peak		
	ETA for Ambulance			
	Air			
	Ground			
	Lat:			
	Long:			
	Z	Point of Contact:	O-102 REM (Mason) (605) 545-4293 & E-80 RAT (Miller) (208) 869-2657 & O-166 EMTF (McGuire) (860) 748-9921 & E-155 Boundary Amb ALS (Hutcherson) (208)304-4036	
EMS Responders & Capability:		ALS		
Equipment Available on Scene:		RAT & REM & Ambulance		
Medical Emergency Channel:		Cedar Peak		
ETA for Ambulance to Scene:				
Air:		40 min		
Ground:		10 min to the Alpha/Zulu break		
Approved Helispot:		H-10	H-44	
Lat:		N47 49.300	47 52.090N	
Long:		116 39.650W	116 35.503W	
Hudlow Base	Point of Contact:	O-19 EMTF (Wolfstitch) (520)508-9807 & O-20 EMTF (Axel) (612) 532-5181 & E-122 Idaho Fall Ambulance (Hirschi) (208) 221-6979 & O-6.55 MEDL(t) (Egger) (708)691-3111 & O-171 EMPF (Keys) (520) 395-6832		
	EMS Responders & Capability:	ALS		
	Equipment Available on Scene:	ALS Amb		
	Medical Emergency Channel:	Cedar Peak		
	ETA for Ambulance to Scene:	ALS Ambulance Staged at Base		
	Air:			
	Ground:			
	Approved Helispot:	H-70	H-74	
	Lat:	N47 50.335	47 48.400N	
	Long:	116 33.685	116 30.622W	
Structure Protection	Point of Contact:	Unstaffed		
	EMS Responders & Capability:			
	Equipment Available on Scene:			
	Medical Emergency Channel:			
	ETA for Ambulance to Scene:			
	Air:			
	Ground:			
	Approved Helispot:			
	Lat:			
	Long:			

MEDICAL PLAN (ICS 206 WF)

Controlled Unclassified Information//Basic

Night Operations	Point of Contact:	O-96 EMPF (Allen) (208) 403-9937 & O-173 EMPF (Orde) (307)399-7316	
	EMS Responders & Capability:	ALS	
	Equipment Available on Scene:	ALS	
	Medical Emergency Channel:	Cedar Peak	
	ETA for Ambulance to Scene:		
	Air:		
	Ground:		
	Approved Helispot:	All approved Helispots as needed	
	Lat:		
	Long:		
7. Prepared By (Medical Unit Leader)		8.	9. Reviewed By (Safety Officer)
Mike Passarelli MEDL <i>Mike Passarelli MEDL</i>			Lee Osterland <i>Lee Osterland</i>
			10. Date/Time 8/18/23 1700



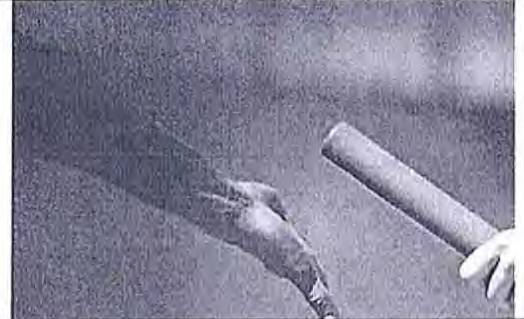
HEALTH AND SAFETY MESSAGE

Good procedures are so simple you don't need to write them down to remember them or use a dictionary to understand them.

INCIDENT: Ridge Creek Fire	DATE: 08/19/23	Operational Period: Day/Night
----------------------------	----------------	-------------------------------

Major Hazards and Risks:

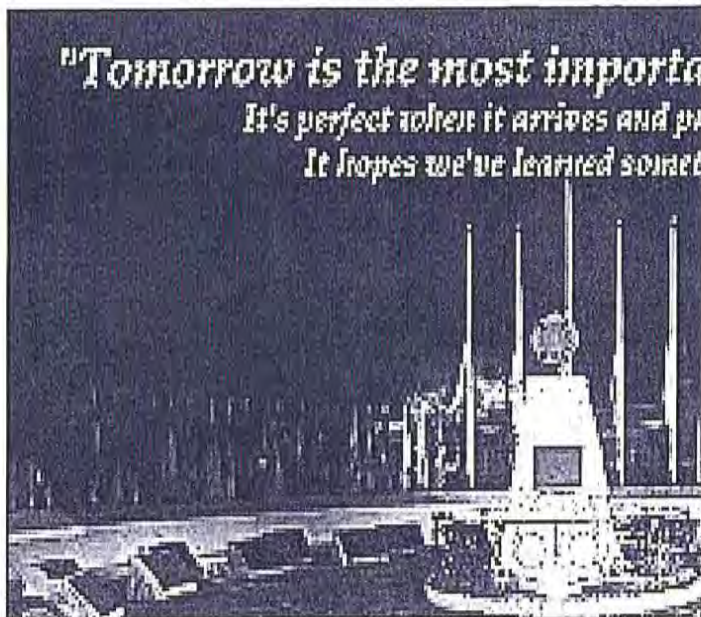
- Transition
- Aviation
- ATV/Vehicle Operations
- Complacency
- Hazard Trees
- Transportation/Dusty Roads



Transition Time

*You have been doing a great job. **Thank You** for your outstanding attitude and attention to SAFETY!! Keep up the great safety record on the Ridge Creek Fire.*

Lookouts Communications Escape Routes Safety Zones



Remember, that until you walk through the front door and drop your gear bags, your assignment is not done. Think safety each day and work safely so that you can reflect back and tell stories about your time in Idaho.

Most common Excuses for not following safety rules and policies:

10. My Supervisor said, "It's OK!"
9. The last fire I was on did not care about that.
8. My company does not provide that to us.
7. I did not think you had to wear that if you were on the road.
6. Isn't this fire contained?
5. The other Safety Officer came by and he/she did not say anything.
4. I have been fighting fire for 20 years and I have never been hurt yet.
3. If I am wearing earplugs, I can not hear my swamper/falling boss yell, "RUN!"
2. The guy in camp said I did not need that on this fire.
1. No one else is wearing theirs, including my Supervisor.

If you have used one of these excuses during your assignment here – think about the potential consequences.

Safety Officers

Lee Osterland SOFC, Terry Trapp SOF2, Ken Glazer SOFC(t)

Line Safety: TJ Carpenter, Dave Canning, Craig Bunce

Sean O'Brien, Chris O'Brien, Mark Gregory

Resource Advisor Message

Water Bars

Have you seen the long-term weather forecast? Rain possible and for sure it will someday on this fire.

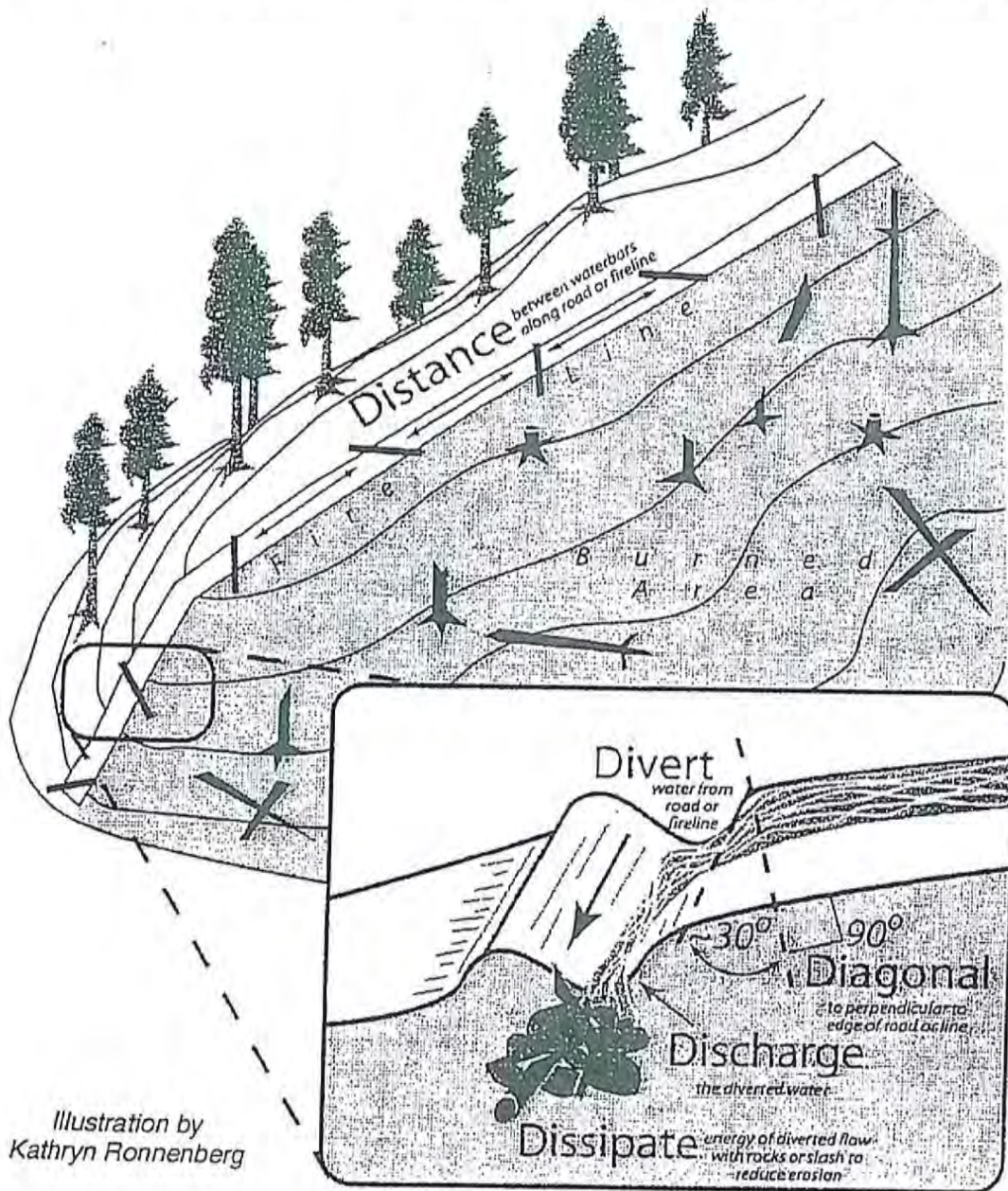


Illustration by
Kathryn Ronnenberg

Image pulled from Eldorado NF Facebook post.

- Used to divert water off the fire line before it builds enough energy to cause erosion.
- Discharge water into areas that can better handle the water. Typically, not the burned area!
- "Rolling dips" in machine line and roads are just big water bars. They serve the same purpose.



Finance Message

Finance Email: 2023.ridgecreek.finance@firenet.gov

SUBJECT: *Include Key Word TIME* for Overhead, Crews &

Cooperators SUBJECT: *Include Key Word EQUIPMENT* for Contract

FINANCE CHECK IN:

2023.ridgecreek.finance@firenet.gov

PLEASE ENSURE THE BELOW DOCUMENTS ARE EMAILED

Overhead, Crews & Cooperator Resources	Contract Resources
<ul style="list-style-type: none"> • Check-In: Crew Manifest, Cooperative Agreement (if applies), AD Casual Hire Letter, Resource Order • Daily: Crew Time Report (CTR), Shift Tickets 	<ul style="list-style-type: none"> • Check-In: Resource Order, Contract/VIPR Agreement (make sure you have your UEI, Pre-Inspection • Daily: Shift Tickets, (Include Transports when applicable) receipts (fuel issues, claims, etc.)

REMINDERS

* WE WILL BE COMPLETELY DIGITAL ON THIS INCIDENT. IF YOU NEED ASSISTANCE, PLEASE CONTACT FINANCE AT 2023.ridgecreek.finance@firenet.gov

- * PLEASE MAKE SURE C OR E # IS ON THE CTR OR SHIFT TICKET
- * PLEASE SHOW YOUR LUNCH BREAK
- * PLEASE USE MILITARY TIME (0001-2400)
- * WHEN CLAIMING HAZARD PAY YOU MUST INCLUDE THE SUPPRESSION ACTION BEING PERFORMED. THIS INCLUDES OPERATIONS WHICH DIRECTLY SUPPORT CONTROL OF FIRE (E.G., ACTIVITIES TO EXTINGUISH THE FIRE, FIREFIGHTING, GROUND SCOUTING, SPOT FIRE PATROLLING, SEARCH AND RESCUE OPERATIONS, AND BACKFIRING).
- * WHEN SIGNING YOUR ELECTRONIC OF-288 or OF-286 PLEASE DO NOT LOCK IT or PROTECT THE SIGNATURE, WE HAVE TO BE ABLE TO SIGN IT AND SEND YOU A COPY
- * IF A GUARANTEE APPLIES FOR A TRANSPORT ON THE FIRE, THIS MUST BE INDICATED ON YOUR SHIFT TICKET IN THE REMARKS
- * For assistance with CLAIMS please contact Farah Scalora at farah_scalora@firenet.gov

CHECK-IN PROCEDURE

1. Scan the QR code on the cover of the IAP and click the Check-in button
 - o If you have questions, visit Check-In in the Plans yurt at ICP and we can assist you with the virtual form, or call 208-891-6074
2. Check in with Finance – see the Finance page

DEMOB PROCEDURE

- ** If you need a flight arranged, use the QR code on the cover of the IAP and click the Flight Request button to submit your request 72 hours prior to your anticipated demob time. If you have trouble with the form, you may visit Demob in person or call 208-891-6074.**
- ** If you are on the Tentative Release list on the next page and you don't think you should be, contact your supervisor first to discuss, and then visit or call Demob.**

How to demob:

1. If you are not on the Tentative Release list on the next page, your section chief needs to submit a 213 to Demob to release you at least 24 hours in advance (72 hours if flight is needed).
2. At your scheduled release date/time listed below, visit Demob in the Plans yurt at ICP. The Demob process is mostly in person (not virtual) at this time. However, anyone who needs to demob remotely (if you cannot come to ICP) can call 208-891-6074.

LOGISTICS SERVICE HOURS

BREAKFAST:	0530 – 0830
DINNER:	1800 – 2130
SHOWERS:	0500 – 2200 (CLOSED 1100 – 1300)
SUPPLY & GROUND SUPPORT:	0600 – 2130
FUEL:	0600 – 2130 (CLOSED 1300 – 1500)
WEED WASH (at Staging)	0700 – 2000 (CLOSED 1200 – 1400)
REEFER:	0530 – 2130
ORDERING:	0700 – 2000

- PLEASE camp only in Team designated areas!

Tentative Release 8/19/2023

Equipment

E-7	0900	GRD1	FOUSTS INC
E-9	0830	WTTD	SAGLE

Overhead

O-66	0700	TFLD	SCHELIN, CASEY LEE
O-134	0730	HEQB	SCHUMACHER, CHRISTOPHER
O-22	1800	ORDM	ADAMCIK, CHRISTIAN

8/20/2023

Equipment

E-6	0700	ENG6	NDNDS E5274
E-28	0715	ENG4	IPF - D1 - E-432
E-72	0830	MBM1	FOUSTS INC

Overhead

O-10	0630	DIVS	WHITE, CHRISTOPHER SEAN
O-22	2200	ORDM	ADAMCIK, CHRISTIAN
O-65	1600	LSCC	SCHUG, STEVEN MARK
O-97	1600	ICCI	GABLIKS, MARIS G
O-12	0700	HEQB	LETSCHER, ASHLEY M
O-70	1800	EQPM	MAGEE, KYLE EVAN

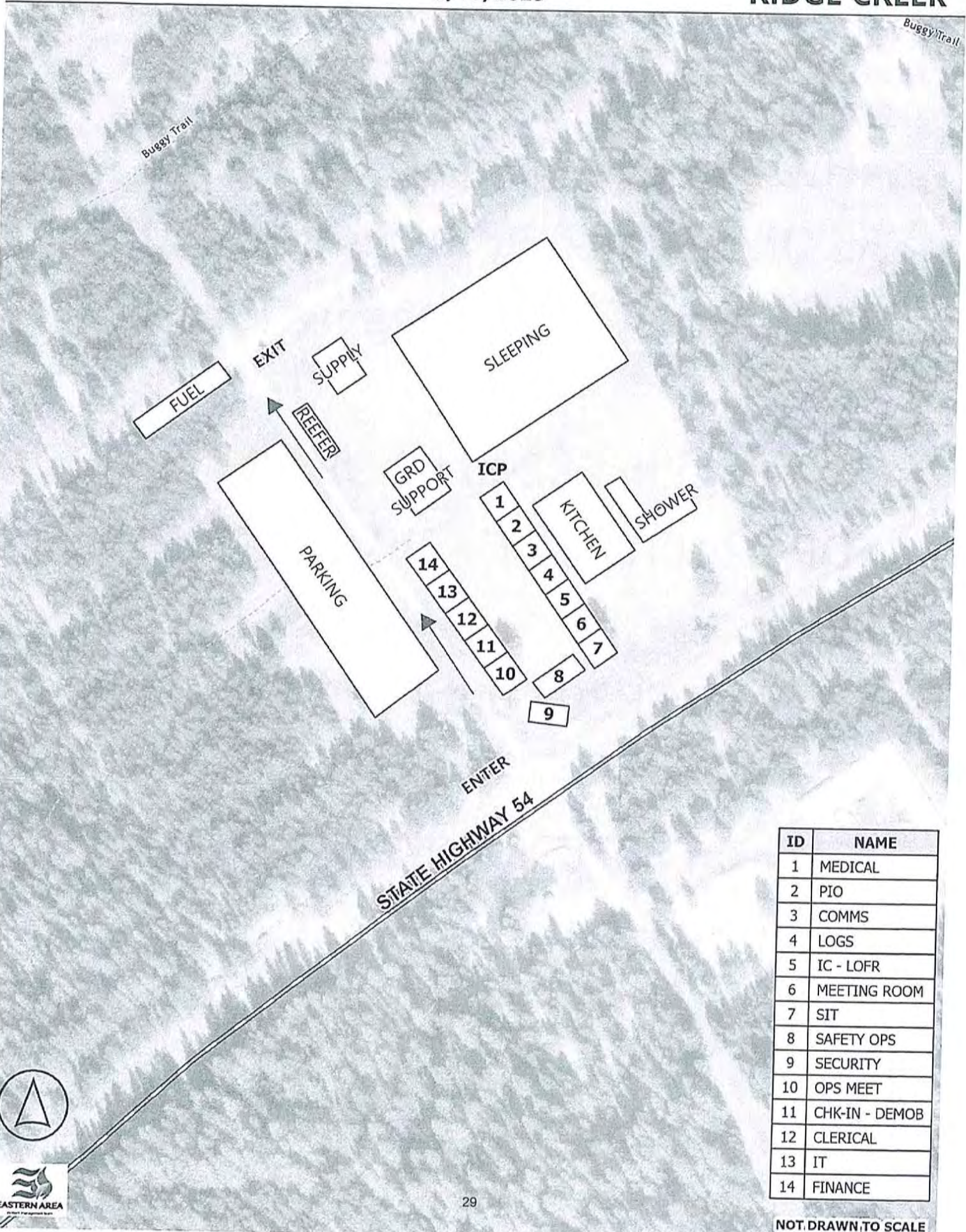
8/21/2023

Equipment

E-16	0730	GWT2	BALL & BALL, LLC
E-27	0745	FEL1	HETF BONNALIE LOGGING
E-31	0900	DZR2	PATRICK MADDEN
E-53	0900	ENG6	NORTHWEST MANAGEMENT IN

Overhead

O-12	0700	HEQB	LETSCHER, ASHLEY M
O-19	0700	EMTF	WILDERNESSMEDICSINC
O-20	0700	EMTF	WOLFSTICH, STEPHEN
O-23	0830	REAF	SLIFKO, MATTHEW ROBERT
O-24	0830	READ	YOUNG, WILL TYLER
O-70	1600	EQPM	MAGEE, KYLE EVAN
O-129	0830	REAF	ROBINSON, CHRISTOPHER W

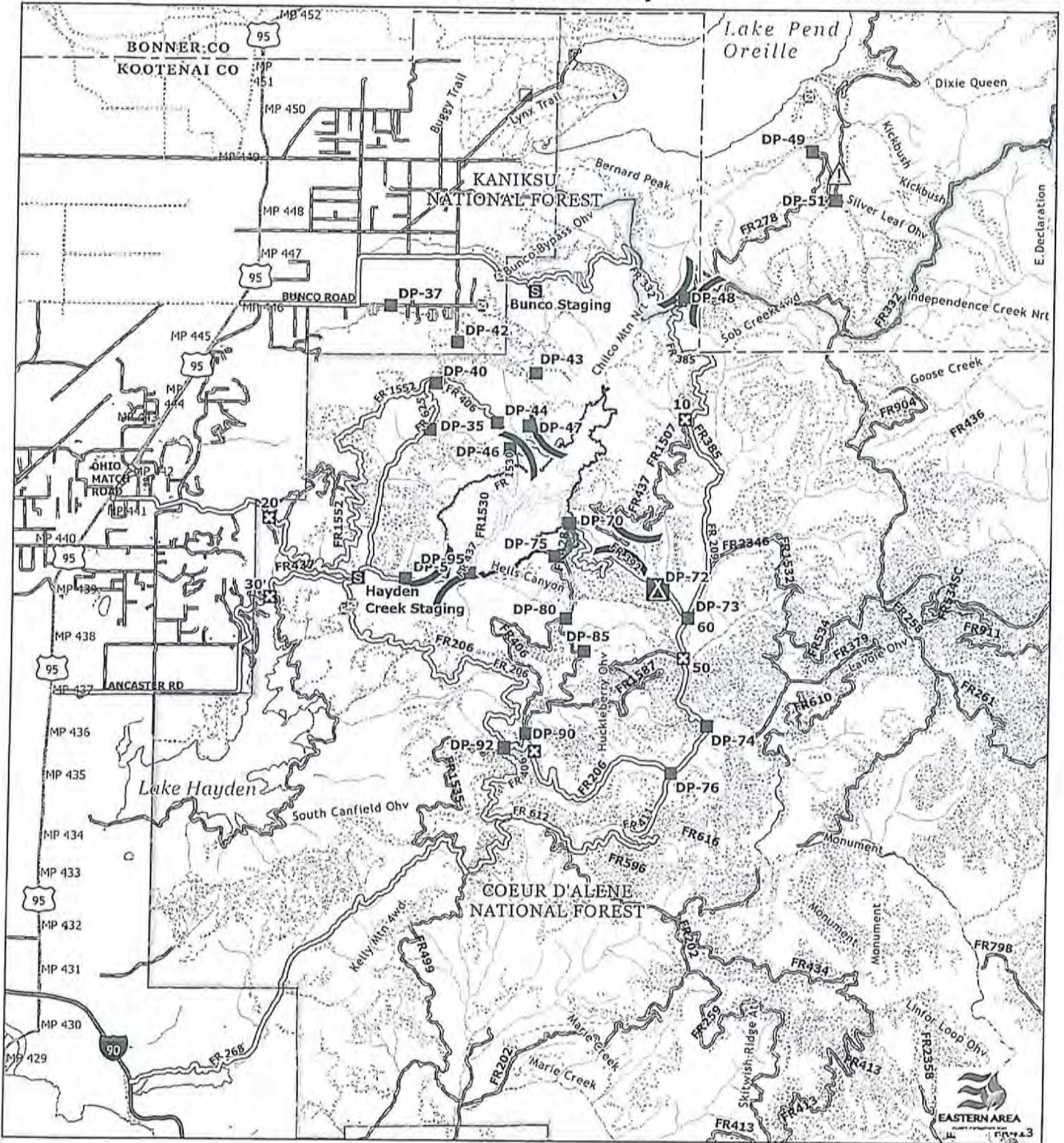


ID	NAME
1	MEDICAL
2	PIO
3	COMMS
4	LOGS
5	IC - LOFR
6	MEETING ROOM
7	SIT
8	SAFETY OPS
9	SECURITY
10	OPS MEET
11	CHK-IN - DEMOB
12	CLERICAL
13	IT
14	FINANCE



Hudlow Base Camp

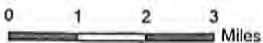
- Hwy 95 to E Ohio Match Rd.
- E Ohio Match Rd turns into FR206
- At Hayden Creek Staging Turn
RIGHT
- Staying on FR206 till DP 92
- DP 92 turn LEFT – Take the RIGHT
Fork
- Stay on FR206 until you get to
FR209
- Stay on FR209 until FR392 turn
LEFT on FR392
- Camp is at DP72



RIDGE CREEK IDIPF000447

3,517 acres
8/18/2023 1236 hrs

North American 1983 Datum.
Lat/Long Grid



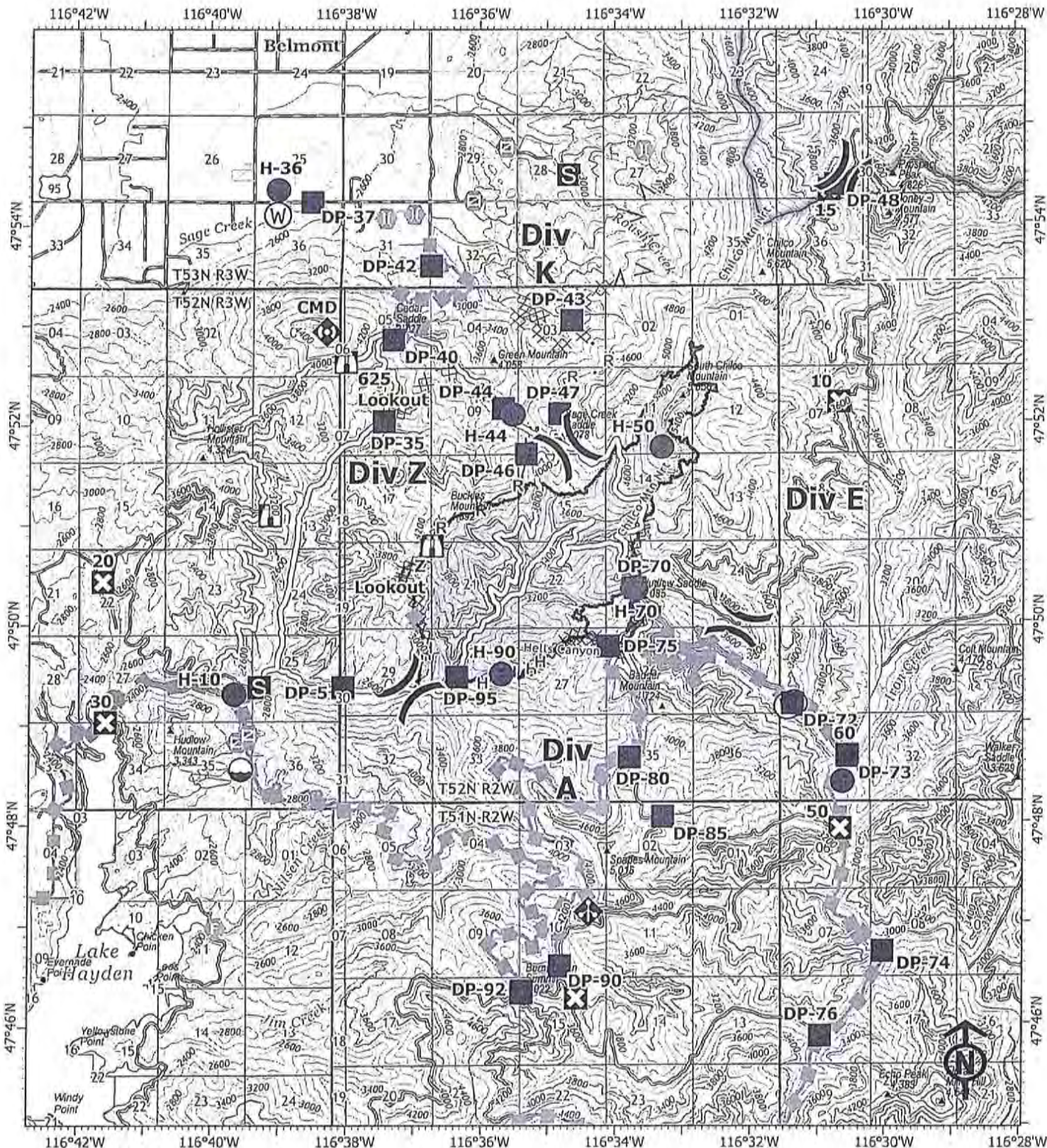
- Wildfire Daily Fire Perimeter
- Contained
- Uncontained
- Unimproved Road
- Improved Road
- Main Access Roads

- Division Break
- Camp
- Incident Command Post
- Drop Point
- Closure
- Staging Area

- Gate
- Bridge
- Hazard
- Land Management**
- BLM
- State

- USFS
- Boundaries**
- County
- National Forest





IAP
RIDGE CREEK
IDIPF000447
08/19/2023 Day

3,517 acres at 8/18/2023 1236 hrs
 Acres from IR



- | | | | |
|--------------------|-----------------------|-----------------------------------|---------------------------------|
| () Division Break | ⊕ Value at Risk | ⊗ Completed Dozer Line | — Access or Improved Road |
| ● Dip Site | ⊗ Gate | H— Completed Hand Line | ▬ Escape Route |
| ● Holsipot | ⊗ Fire Station | R— Completed Road as Line | — Contained |
| ■ Drop Point | ⊗ Bridge | — Planned Dozer Line | --- Uncontained |
| ⊗ Closure | ⊗ Repair Point | ∧ Planned Fuel Break | ▭ Wildfire Daily Fire Perimeter |
| ⊗ Camp | ⊗ Mobile Weather Unit | H Planned Hand Line | BLM |
| ⊗ Staging Area | ⊗ Repeater | M Planned Mixed Construction Line | State |
| ⊗ Lookout | ⊗ Water Source | 32 R Planned Road as Line | USFS |



UNIT LOG	1. INCIDENT NAME	2. DATE PREPARED	3. TIME PREPARED
	4. UNIT NAME/DESIGNATORS	5. UNIT LEADER (NAME AND POSITION)	6. OPERATIONAL PERIOD

7. PERSONNEL ROSTER ASSIGNED

NAME	ICS POSITION	TEAM/AGENCY
.....
.....
.....
.....
.....
.....
.....
.....
.....
.....
.....
.....
.....
.....
.....
.....
.....
.....
.....
.....
.....
.....
.....
.....
.....
.....
.....
.....

8. ACTIVITY LOG (CONTINUE ON REVERSE)

TIME	MAJOR EVENTS
.....
.....
.....
.....
.....
.....
.....
.....
.....
.....
.....
.....
.....
.....
.....
.....
.....
.....
.....
.....
.....
.....
.....
.....
.....
.....
.....
.....
.....
.....
.....

ICS 214 3/98	9. PREPARED BY
-----------------	----------------

MEDICAL PLAN (ICS 206a WF)

Controlled Unclassified Information//Basic

Medical Incident Report					
FOR A NON-EMERGENCY INCIDENT, WORK THROUGH CHAIN OF COMMAND TO REPORT AND TRANSPORT INJURED PERSONNEL AS NECESSARY.					
FOR A MEDICAL EMERGENCY: IDENTIFY ON SCENE INCIDENT COMMANDER BY NAME AND POSITION AND ANNOUNCE "MEDICAL EMERGENCY" TO INITIATE RESPONSE FROM IMT COMMUNICATIONS/DISPATCH.					
Use the following items to communicate situation to communications / dispatch.					
1. CONTACT COMMUNICATIONS / DISPATCH (Verify correct frequency prior to starting report) <i>Ex: "Communications, Div. Alpha. Stand-by for Emergency Traffic."</i>					
2. INCIDENT STATUS: Provide incident summary (including number of patients) and command structure. <i>Ex: "Communications, I have a Red priority patient, unconscious, struck by a falling tree. Requesting air ambulance to Forest Road 1 at (Lat./Long.) This will be the Trout Meadow Medical, IC is TFLD Jones. EMT Smith is providing medical care."</i>					
Severity of Emergency / Transport Priority	<input type="checkbox"/> RED / PRIORITY 1 Life or limb threatening injury or illness. Evacuation need is IMMEDIATE <i>Ex: Unconscious, difficulty breathing, bleeding severely, 2" - 3" burns more than 4 palm sizes, heat stroke, disoriented.</i> <input type="checkbox"/> YELLOW / PRIORITY 2 Serious Injury or illness. Evacuation may be DELAYED if necessary. <i>Ex: Significant trauma, unable to walk, 2e-3e burns not more than 1-3 palm sizes.</i> <input type="checkbox"/> GREEN / PRIORITY 3 Minor Injury or illness. Non-Emergency transport <i>Ex: Sprains, strains, minor heat-related illness.</i>				
Nature of Injury or Illness & Mechanism of Injury			Brief Summary of injury or illness <i>(Ex: Unconscious, Struck by Falling Tree)</i>		
Transport Request			Air Ambulance / Short Haul / Hoist Ground Ambulance / Other		
Patient Location			Descriptive Location & Lat. Long (WGS84)		
Incident Name			Geographic Name + "Medical" <i>(Ex: Trout Meadow Medical)</i>		
On-Scene Incident Commander			Name of on-scene IC of incident within an Incident <i>(Ex: TFLD Jones)</i>		
Patient Care			Name of Care Provider <i>(Ex: EMT Smith)</i>		
3. INITIAL PATIENT ASSESSMENT: Complete this section for each patient as applicable (start with the most severe patient)					
Patient Assessment: See IRPG Page 106					
Treatment:					
4. TRANSPORT PLAN:					
Evacuation Location (if different): (Descriptive Location (drop point, intersection, etc.) or Lat. / Long.) Patient's ETA to Evacuation Location:					
Helispot / Extraction Site Size and Hazards:					
5. ADDITIONAL RESOURCES / EQUIPMENT NEEDS:					
<i>Example: Paramedic/EMT, Crews, Immobilization Devices, AED, Oxygen, Trauma Bag, IV/Fluid(s), Splints, Rope rescue, Wheeled litter, HAZMAT, Extrication</i>					
6. COMMUNICATIONS: Identify State Air/Ground EMS Frequencies and Hospital Contacts as applicable					
Function	Channel Name/Number	Receive (RX)	Tone/NAC *	Transmit (TX)	Tone/NAC *
COMMAND					
AIR-TO-GRND					
TACTICAL					
7. CONTINGENCY: <u>Considerations:</u> If primary options fail, what actions can be implemented in conjunction with primary evacuation method? Be thinking ahead.					
8. ADDITIONAL INFORMATION: Updates/Changes, etc.					
REMEMBER: Confirm ETA's of resources ordered. Act according to your level of training. Be Alert. Keep Calm. Think Clearly. Act Decisively.					