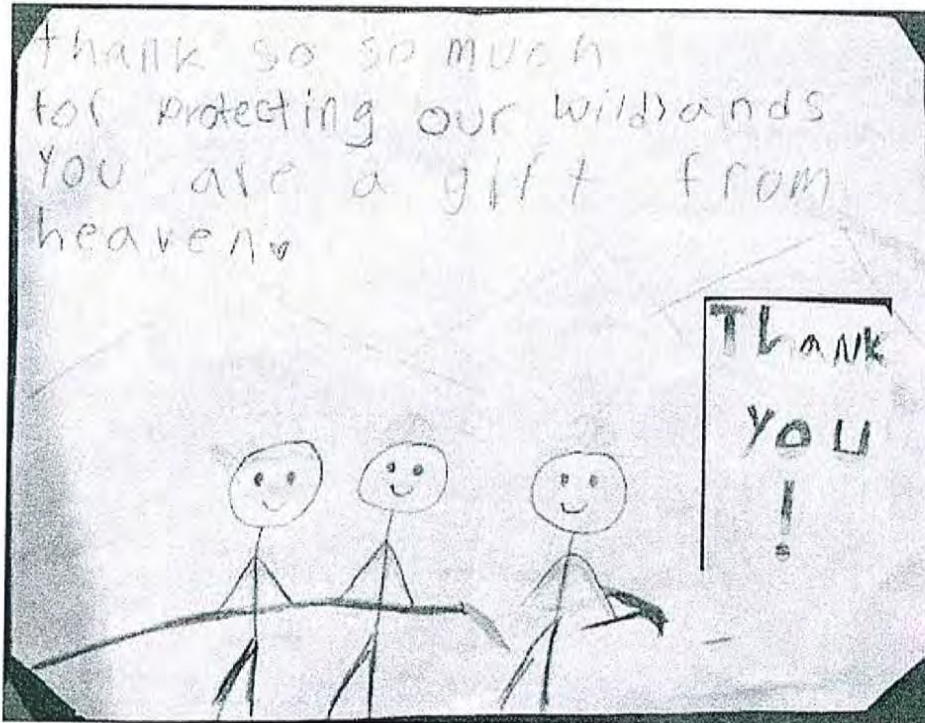


Corrected Ridge Creek

Incident Action Plan

Sunday, August 20, 2023, 0600 -

Monday, August 21, 2023, 0600



Corrected

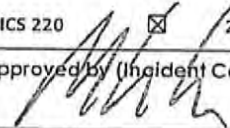
Corrected

ID-IPF-000447

P1QG9D (0104)



QR Code to download:
IAP, Maps, CTR/EST, Incident Emails,
Demob Flight Requests
<https://linktr.ee/2023ridgecreek>

INCIDENT OBJECTIVES	1. Incident Name Ridge Creek Fire	2. Date 8/19/23	3. Time 2000
4. Operational Period: 8/20/202 0600 to 8/21/2023 0600			
<p>5. General Control Objectives for the Incident</p> <ul style="list-style-type: none"> • Protection of human life is the highest priority. Use a deliberative risk management process that mitigates risk to the public and firefighting resources while implementing a course of action where there is a high probability of success. • Ridge Creek: Keep fire east of the boundary between private ownership and National Forest Keep fire south of the boundary between private ownership and National Forest Keep fire south of the Bunco Road (FSR 332) Keep fire north of FSR 206 Keep fire west of FSR 209 to protect or minimize impacts to Little North Fork River Corridor • Protect infrastructure, private residences, private inholdings, and businesses within and near the planning area from negative impacts by fire and mitigate smoke impacts when possible. <ul style="list-style-type: none"> o Develop a population protection plan for east of Hayden Lake. o Coordinate with Kootenai County Emergency Management and Bonner County as appropriate. o Coordinate with Kootenai County Sheriff on emergency evacuation plan as needed. o Implement and maintain any road, trail, or area closures for public safety as needed. • Minimize fire and suppression impacts to timber values on private industrial timber lands and National Forest System lands. • Minimize potential fire impacts to critical community infrastructure including Hayden Creek Watershed, Hayden Lake Watershed, associated Riparian Habitat Conservation Areas (RHCA), and Bonneville Power Administration Transmission Lines. • Build and maintain a high degree of trust with our partners, cooperators, stakeholders, and forest visitors by providing accurate, timely, and well distributed information. • In addition, follow established management action points and requirements found in the Ridge Creek WFSS decision. 			
<p>5b. Incident Commander's Intent</p> <ol style="list-style-type: none"> 1. To create an environment free of harassment of any kind. My goal is to create a workplace where employees would feel comfortable if their family members and loved ones worked there too. 2. Prioritized values at risk are: <ul style="list-style-type: none"> • Private property and residences • Hayden Creek and Hayden Lake Water Quality • Industrial timber lands, plantations, and Bottom Canyon Timber Sales (Idaho Forest Group) and other planned timber sales • Bonneville Power Administration Transmission Line • Hudlow Warming Hut • Chilco Mountain National Recreation Trail 			
7. Attachments (mark if attached)			
<input checked="" type="checkbox"/> Organization List - ICS 203	<input checked="" type="checkbox"/> Weather Forecast	<input checked="" type="checkbox"/> Messages Safety, Finance	
<input checked="" type="checkbox"/> Div. Assignment Lists - ICS 204	<input checked="" type="checkbox"/> Fire Behavior Forecast	<input checked="" type="checkbox"/> Messages Logs/Plans, READ	
<input checked="" type="checkbox"/> Communications Plan - ICS 205	<input checked="" type="checkbox"/> Incident Map	<input checked="" type="checkbox"/> Transportation Map & Hudlow Directions	
<input checked="" type="checkbox"/> Medical Plan - ICS 206	<input checked="" type="checkbox"/> Air Operations- ICS 220	<input checked="" type="checkbox"/> 205a, 206a, 214	
9. Prepared by (Planning Section Chief) Aaron Young - PSC(T)	9. Approved by (Incident Commander) IC 		

ORGANIZATION ASSIGNMENT LIST (ICS 203)

1. Incident Name: Ridge Creek		2. Operational Period Date From: 08/20/23 Date To: 8/21/23 Time From: 0600 Time To: 0600	
3. Incident Commander(s) and Command Staff:		6. Logistics continued:	
IC/UC's	Steve Miller; Maris Gabliks (T)	Ground Support Unit	Willard Stanley, Jr.; Lindsay Larson (T)*
Deputy	Chris Woods (T)*		
Safety Officer	Lee Osterland; Terry Trapp; Kent Glazer (T)		
Public Info. Officer	Clark McCreedy; Larry Bickel; Brian Vanvickle		
Liaison Officer	Ron Robinson; Cecile Steller	7. Operations Section:	
4. Agency/Organization Representatives:		Chief-Planning Ops	Joe Alyea; Darren Bridges (T)
Agency/Organization	Name	Field Ops	Cory Henry*; Brian Wolverter (T)
USFS	Randy Swick; Holly Hampton (T)	Strategic Ops	
IDL	Andrew Smyth; Erik Sjoquist	Staging Area	
Resource Advisors	Will Young; Matt Slifko; Chris Robinson		
5. Planning Section:		DIVISIONS	
		Division/Group	A Todd Wood; Josh Strohmeier (T)
Chief	Peter Fischer; Aaron Young(T)	Division/Group	E David Gregory
Deputy	Robbi Mecus*	Division/Group	K Ryan Nipp
Resources Unit	Susan Thiel; Matt Tonello (T)	Division/Group	Z Chris White
Situation Unit	Ben Garrett; Thomas Tarabelli(T)	Division/Group	Structure Steven Thime
Documentation Unit	Lisa Spiess (T) -V	Division/Group	Night Rufus Davis Jr.
Demobilization Unit	Wendy Christopher; Stacey Barnett		
Technical Specialists	John Costello; Mark Erikson (T)*		
GIS Specialist	Peter Rose; Justin Lamountain,	Air Operations Branch	
Incident Meteorologist	Shane Eagan	Air Ops Branch Dir	John Fish
Fire Behavior Analyst	Bill Aney	Air Support Supervisor	Caleb Schreiber(T)
6. Logistics Section:			
Chief	Scott Carrigan; Steve Schug		
Deputy		8. Finance/Administration Section:	
Communications Unit	Arnold Irvine	Chief	Mary Coleman; Peter Beringer -V
Medical Unit	Robert White; Mike Passarelli Robert Eggert (T)*	Deputy	
		Time Unit	Valarie Sanchez; Carole Wickle (T)
Food Unit		Procurement Unit	
Support Branch Director	Bryan Gallagher	Comp/Claims Unit	Farrah Scalora -V
Facilities Unit	Lester Kaiser; Andy Kenyon*	Cost Unit	Jennifer Gallagher -V
Base Camp Mgr	Tim Gallagher; Tim Crowell (T)		
Supply Unit	Joel Clark		
Ordering Manager	Laurie Meadows (T)	Personnel with an * are staff stationed at Hudlow	
9. Prepared by: Name: Susan J Thiel		Position/Title: RESL	Signature: <i>Susan J Thiel</i>
ICS 203 IAP Page		Date/Time: 08/19/23 2030hrs	



INCIDENT Weather Forecast



Forecast No: 11
 Prediction For: Sunday
 Shift Date: August 20, 2023
 Forecast Issued: August 19, 2023 at 1800

Name of Incident: Ridge Creek
 Unit: Idaho Panhandle NF
 Incident Meteorologist: Shane Eagan

Discussion: Smoke and cloud cover will keep RH in the around 25% for most areas. If smoke lifts or clouds cover is less dense, RH could hit lower 20s. Isolated showers/storms are possible late this afternoon through the evening hours, although precipitation will be spotty. Better chance for rain Monday into Tuesday.

Forecast for Today:

Sky/Weather: Increasing clouds. Chance of spotty showers/storms after 1600. Smoke will linger.

	<u>Ridge Creek ICP 2,400'</u>	<u>Ridge Creek 3,400'</u>	<u>Spades 4,600'</u>	
Max Temperature:	85	80	76	°F
Min RH:	25-30	26-32	28-34	%
Wind (20 FT):	Moderate inversion will begin to lift after 1100			
...	NE 6	NE/Vrb 6	NE 7	mph
...	Gusts: 14	Gusts: 13	Gusts: 15	mph
Mixing Height:	4,500	4,500	5,000	ft AGL
Haines Index:	4	4	4	
LAL:	1	2	2	
Chance of Precipitation:	10	10	10	%
Tonight's Min Temperature:	54	59	61	°F
Tonight's Max RH:	88-92	60-65	55-61	%
Tonight's Wind (20 FT):	Inversion will form after 1900, variable winds in drainages			
...	E 4	E 3	E 3	mph
...	Gusts: 8	Gusts: 8	Gusts: 8	mph
Tonight's Mixing Height:	500	500	500	ft AGL
Tonight's LAL:	2	2	2	
Tonight's Chnc of Precip:	15	20	20	%

Forecast for Monday:

Sky/Weather: Mostly cloudy. Showers likely, a few lightning strikes possible. CWR (>0.1") ~65%

	<u>Ridge Creek ICP 2,400'</u>	<u>Ridge Creek 3,400'</u>	<u>Spades 4,600'</u>	
Max / Min Temperature:	81 53	77 57	71 60	°F
Min / Max RH:	48 100	52 85	56 75	%
Wind (20 FT):	Winds becoming SE, variable winds in sheltered areas			
...	E 7	SE/Vrb 6	ESE 7	mph
...	Gusts: 13	Gusts: 11	Gusts: 14	mph
Mixing Height:	4,500	4,500	4,000	ft AGL
Haines Index:	2	LAL: 2	Precip Chance: 75	

Extended Outlook: Rain and storm chances continue through Wednesday. Drier weather returns to end the week with a small chance of precipitation, although better chances look to remain south.

		<u>Max T</u>	<u>Min T</u>	<u>Min RH</u>	<u>Max RH</u>	<u>Ridge Winds @ 1500</u>	<u>Weather</u>
Ridge Creek 3,400'	Tue:	71	51	55	80	SW @ 9 G15	Mostly cloudy, rain/storms
	Wed:	72	49	33	65	SW @ 9 G18	Mostly sunny, spotty precip
	Thu:	79	53	27	65	W @ 8 G15	Sunny & warmer

IRAWS 44 - Spades: Use freq 163.350, key mic, enter 0044 to get Wx
 Please text weather obs to IMET (312-804-2926) or email shane.eagan@noaa.gov

FIRE BEHAVIOR FORECAST

FORECAST NUMBER: 12	INCIDENT TYPE: Wildland Fire
FIRE NAME: Ridge Creek	OPERATIONAL PERIOD: 8/20-22/2023
DATE ISSUED: 8/19/2023	TIME ISSUED: 1800
UNIT: ID-IPF	PREPARED BY: W.C. (Bill) Aney FBAN SIGNED: /s/ William C. Aney

INPUTS

WEATHER SUMMARY: Trending cooler and moister over the period, with light to moderate winds shifting from NE to SW. Chance for precipitation each day. See more detail in fire weather forecast.

FUELS & FUEL MOISTURE:

- Primary timber fuel types are mixed conifer forest. Open canopy stands on exposed slopes are modeled as fuel model GS2 with dry site shrub species (oceanspray, ninebark, etc.). Closed canopy stands on less exposed slopes (north slopes and drainage bottoms) are modeled as TU1.
- Secondary, but still important fuel types are:
 - Subalpine fir near highest elevation ridgetops, fire carried by individual tree torching and spotting with little surface fire. Longer range spotting possible due to ridgetop location exposed to wind.
 - Timber harvest units of different ages, which are exposed to drying and wind (treat as FM GS2)
- Fuel moisture, both live and dead, is typical of late summer conditions. Fuel moisture assumed to be increasing over the three day period due to cooler temps, higher humidity, and decent chance of precipitation.

The rain on August 9 (estimated at .2in over several hours) depressed fire danger indices and fire behavior for about 5 days.

BEHAVE inputs: 6-11mph 20ft wind, gusts to 18. .4 wind adjustment, 60-80% shading, 20% south slope, fuel moisture: 9/10/11 trending to 13,15,14 on 0822, 75% herb, 75% live woody

OUTPUTS - FIRE BEHAVIOR

Within contained fire perimeter: consumption of ground fuels and (in some places) canopy fuels by the fire and firing operations now limit fire behavior and spread. Expect continued smoldering and burning of heavier ground fuels (logs, stumps), occasional single tree and small group torching is possible.

New Fire Starts: Weather and fuel conditions becoming much less conducive to challenging fire behavior. Smoldering ground fire with open flame, with limited anticipated after 08/20.

The following surface fire behavior outputs are based on wind and slope alignment on a 20% slope. Displayed are outputs for 8/20 & 8/22; 08/21 results can be assumed to be intermediate between the two.

Fuel Type	Spread Rate ch/hr		Flame length (ft)		Spot Distance		Prob. Ignition	
	08/20	08/22	08/20	08/22	08/20	08/22	08/20	08/22
Timber/Grass/Shrub (GS2)	16	4	3.2	1.1	.4mi	.5mi	34%	17%
Timber litter (TU1)	3-4	1	2	.6	.4mi	.5mi	"	"

Notice the significant decline in fire behavior during the period, except spotting distance increases. This is solely due to the increase in windspeed; actual spotting should be minimal given the minimal chance of torching and ember production.

AIR OPERATIONS: Light winds, potential for inversion, and upwind fires in Montana all could limit visibility and ability to conduct air operations.

SAFETY: continued shifting winds can make new areas of the fire active as heat is moved into fresh fuels and previously sheltered slopes are exposed to the wind. Stay alert, pay attention to wind direction constantly.

Base all action on current and expected fire behavior

DIVISION ASSIGNMENT LIST			1. Branch		2. Division	
3. Incident Name RIDGE CREEK			4. Operational Period From: 08/20/2023 0600 To: 8/21/2023 0600			
5. Operations Personnel						
Field Operations Section Chief		Cory Henry/Brian Wolvert (T)		Branch Director		
Planning Operations Section Chief		Joe Alyea/Darren Bridges (T)		Division Supervisor		Todd Wood 602-617-2017 Josh Strohmeyer (T) 779-240-0194
6. Resources Assigned this Period						
RO#	Strike Team/Task Force/ Resource Designator	Leader	# People	LWD	Drop Off PT./Time	Pick Up PT./Time
C-8	CRW1 Black Mountain	Gill	20	8/22	Hudlow/0600	Hudlow/2200
C-7	CR21 Firestorm Wildland Fire NCC 7A	MacNorlie	20	8/21	Hudlow/0600	Hudlow/2200
C-11	CR21 Miller Timber	Yashima	20	8/22	Hudlow/0600	Hudlow/2200
C-25	CR21 Standing Rock	Hodgkiss	20	8/28	Hudlow/0600	Hudlow/2200
C-18	CRW2 Alpine Services	Torres	20	8/27	Hudlow/0600	Hudlow/2200
C-31	CRW2 Dust Busters Crew 12	Lugo	20	8/31	Hudlow/0600	Hudlow/2200
C-32	CRW2 Dust Busters Crew 13	Hubbard	20	9/1	Hudlow/0600	Hudlow/2200
O-94	FMOD West Wood LLC	Arvish	2	8/22	Hudlow/0600	Hudlow/2200
O-98	FMOD Brothers Fire LLC.	Rosander	2	8/22	Hudlow/0600	Hudlow/2200
E-28	ENG6 ID-IPE 81	Owens	6	8/23	Hudlow/0600	Hudlow/2200
E-50	ENG6 SGS NORTH WEST LLC D34044	Sherlock	2	8/23	Hudlow/0600	Hudlow/2200
E-51	ENG6 SGS North West LLC A16185	Sherlock	2	8/23	Hudlow/0600	Hudlow/2200
E-52	ENG6 Funk Fire	Funk	2	8/23	Hudlow/0600	Hudlow/2200
E-53	ENG6 Northwest Mgt	Stutzman	3	8/20	Hudlow/0600	Hudlow/2200
7. Control Operations: TASK - Continue to secure control line on the entire division utilizing all forms of suppression tactics. PURPOSE - Keep fire west of FSR 406. END STATE - Stop easterly progression of fire beyond FSR 406.						
8. Special Instructions: Tactical and planned firing operations may take place in order to maintain control objectives. Review heat-related illness symptoms in the 2022 IRPG 110. Keep 3 to 1 water to Gatorade/Powerade ratio. Utilize field maps for drop points, safety zones, and potential helispots. Ensure that communications are functional throughout the entire division. Local engines are also available for IA.						
9. Division/Group Communication Summary						
Communications Summary						
Channel	Function	RX Frequency	RX Tone	TX Frequency	TX Tone	
1 TAC 1	TAC	168.0500 N	110.9	168.0500 N	110.9	
6 MICA BLM Primary	CMD	164.5250 N	NONE	163.0250 N	100.0	
7 FS Monument Secondary	CMD	169.9250 N	107.2	165.5625 N	131.8	
8 Cedar Peak	CMD	170.9750 N	110.9	168.7000 N	110.9	
12 A/G Primary	A/G	167.1250 N	107.2	167.1250 N	NONE	
13 A/G SECONDARY	A/G	166.6125 N	NONE	166.6125 N	NONE	
16 Air Guard	AIRGUARD	168.6250 N	NONE	168.6250 N	110.9	
Prepared by (Resource Unit Ldr) Susan Thiel, RESL				Date 08/19/2023	Time 2030	

DIVISION ASSIGNMENT LIST		1. Branch	2. Division A (Page 2 / 3)			
3. Incident Name RIDGE CREEK		4. Operational Period From: 08/20/2023 0600 To: 8/21/2023 0600				
5. Operations Personnel						
Field Operations Section Chief	Cory Henry/Brian Wolvert (T)	Branch Director				
Planning Operations Section Chief	JoeAlyea/Darren Bridges (T)	Division Supervisor		Todd Wood 602-617-2017 Josh Strohmeyer (T) 779-240-0194		
6. Resources Assigned this Period						
RO#	Strike Team/Task Force/ Resource Designator	Leader	# People	LWD	Drop Off PT./Time	Pick Up PT./Time
E-59	ENG6 Solomon Fire Equip C66420	Wing	3	8/22	Hudlow/0600	Hudlow/2200
Local	ENG6 Ocala T7	O'Brien	3	na	Hudlow/0600	Hudlow/2200
E-3	WTS2 St Florian	Madden <i>Phillips</i>	1	9/2	Hudlow/0600	Hudlow/2200
E-4	WTS2 Craig Martin 492771	Holiday <i>Martin</i>	2	9/2	Hudlow/0600	Hudlow/2200
E-138	WTS2 St Regis VFD T7	Ahern	1	8/29	Hudlow/0600	Hudlow/2200
E-132	Wtt2 Tri-State Fire	Cruz	2	8/31	Hudlow/0600	Hudlow/2200
E-31	DZR2 Patrick Madden S01069	Madden	2	8/20	Hudlow/0600	Hudlow/2200
E-133	DZR2 Chad Howell	Krista	2	8/27	Hudlow/0600	Hudlow/2200
E-32	XC2 Altered Aspects LLC A85027	Lindsey	2	8/20	Hudlow/0600	Hudlow/2200
E-8	EXC2 Fousts Inc. 35616	Gatchell	1	8/24	Hudlow/0600	Hudlow/2200
E-79	EXC2 J & P Idaho Services 2-1679	Kitchen	2	8/25	Hudlow/0600	Hudlow/2200
E-72	MBM1 Fousts C81065	Kramer	1	8/19	Hudlow/0600	Hudlow/2200
E-77	FEL1 Fousts A80052	Evans	1	8/24	Hudlow/0600	Hudlow/2200
7. Control Operations:						
TASK - Continue to secure control line on the entire division utilizing all forms of suppression tactics.						
PURPOSE - Keep fire west of FSR 406.						
END STATE - Stop easterly progression of fire beyond FSR 406.						
8. Special Instructions:						
Tactical and planned firing operations may take place in order to maintain control objectives.						
Review heat-related illness symptoms in the 2022 IRPG 110.						
Keep 3 to 1 water to Gatorade/Powerade ratio.						
Utilize field maps for drop points, safety zones, and potential helispots.						
Ensure that communications are functional throughout the entire division.						
Local engines are also available for IA.						
9. Division/Group Communication Summary						
Communications Summary						
Channel	Function	RX Frequency	RX Tone	TX Frequency	TX Tone	
1 TAC 1	TAC	168.0500 N	110.9	168.0500 N	110.9	
6 MICA BLM Primary	CMD	164.5250 N	NONE	163.0250 N	100.0	
7 FS Monument Secondary	CMD	169.9250 N	107.2	165.5625 N	131.8	
8 Cedar Peak	CMD	170.9750 N	110.9	168.7000 N	110.9	
12 A/G Primary	A/G	167.1250 N	107.2	167.1250 N	NONE	
13 A/G SECONDARY	A/G	166.6125 N	NONE	166.6125 N	NONE	
16 Air Guard	AIRGUARD	168.6250 N	NONE	168.6250 N	110.9	
Prepared by (Resource Unit Ldr) <i>Susan Thiel</i>				Date 08/19/2023	Time 2030	

DIVISION ASSIGNMENT LIST		1. Branch	2. Division A (Page 3 / 3)			
3. Incident Name RIDGE CREEK		4. Operational Period From: 08/20/2023 0600 To: 8/21/2023 0600				
5. Operations Personnel						
Field Operations Section Chief	Cory Henry/Brian Wolvert (T)		Branch Director			
Planning Operations Section Chief	Joe Alyea/ Darren Bridges(T)		Division Supervisor		Todd Wood 602-617-2017 Josh Strohmeyer(T) 779-240-0194	
6. Resources Assigned this Period						
RO#	Strike Team/Task Force/ Resource Designator	Leader	# People	LWD	Drop Off PT./Time	Pick Up PT./Time
A-67	UAR3	Black	1		Hudlow/600	Hudlow/2200
O-32	TFLD	Taylor	1	8/22	Hudlow/0600	Hudlow/2200
O-33	TFLD(t)	Hurrell	1	8/22	Hudlow/0600	Hudlow/2200
O-35	TFLD	Jerman	1	8/21	Hudlow/0600	Hudlow/2200
O-111	TFLD (t)	Primmer	1	8/22	Hudlow/0600	Hudlow/2200
O-89	HEQB	Schielke	1	8/24	Hudlow/0600	Hudlow/2200
O-90	HEQB(t)	Oikarinen	1	8/24	Hudlow/0600	Hudlow/2200
O-115	HEQB(t)	Vickers	1	8/25	Hudlow/0600	Hudlow/2200
O-139	SOFR	Chris OBrien	1	8/28	Hudlow /0600	Hudlow/2200
O-19	EMTF Wilderness Medics	Axel	1	8/20	Hudlow/0600	Hudlow/2200
O-171	EMPF Blacklands EMS Inc.	Keys	1	8/29	Hudlow/0600	Hudlow/2200
O-20	EMTF	Wolfstitch	1	8/20	Hudlow/0600	Hudlow/2200
E-122	AMB1 ALS-ID88IN Idaho Falls FD #847	King	2	8/27	Hudlow/0600	Hudlow/2200
7. Control Operations:						
TASK - Continue to secure control line on the entire division utilizing all forms of suppression tactics.						
PURPOSE - Keep fire west of FSR 406.						
END STATE - Stop easterly progression of fire beyond FSR 406.						
8. Special Instructions:						
Tactical and planned firing operations may take place in order to maintain control objectives.						
Review heat-related illness symptoms in the 2022 IRPG 110.						
Keep 3 to 1 water to Gatorade/Powerade ratio.						
Utilize field maps for drop points, safety zones, and potential helispots.						
Ensure that communications are functional throughout the entire division.						
Local engines are also available for IA.						
9. Division/Group Communication Summary						
Communications Summary						
Channel	Function	RX Frequency	RX Tone	TX Frequency	TX Tone	
1 TAC 1	TAC	168.0500 N	110.9	168.0500 N	110.9	
6 MICA BLM Primary	CMD	164.5250 N	NONE	163.0250 N	100.0	
7 FS Monument Secondary	CMD	169.9250 N	107.2	165.5625 N	131.8	
8 Cedar Peak	CMD	170.9750 N	110.9	168.7000 N	110.9	
12 A-G Primary	A/G	167.1250 N	107.2	167.1250 N	NONE	
13 A-G SECONDARY	A/G	166.6125 N	NONE	166.6125 N	NONE	
16 Air Guard	AIRGUARD	168.6250 N	NONE	168.6250 N	110.9	
Prepared by (Resource Unit Ldr) Susan Thiel				Date 08/19/2023	Time 1900	

DIVISION ASSIGNMENT LIST			1. Branch	2. Division K (Page 1 /2)		
3. Incident Name RIDGE CREEK			4. Operational Period From: 08/20/2023 0600 To: 8/21/2023 0600			
5. Operations Personnel						
Field Operations Section Chief	Cory Henry/Brian Wolvert (T)		Branch Director			
Planning Operations Section Chief	Joe Alyea/Darren Bridges (T)		Division Supervisor		Ryan Nipp () -	
6. Resources Assigned this Period						
RO#	Strike Team/Task Force/ Resource Designator	Leader	# People	LWD	Drop Off PT./Time	Pick Up PT./Time
C-5	CRW1 IHC Klamath	Owensbey	19	8/25	ICP/0600	ICP/2200
C-20	CR2I Idaho Panhandle IHC	Sanders	22	8/25	ICP/0600	ICP/2200
O-93	FMOD CZ Contracting	Babin	2	8/23	ICP/0600	ICP/2200
O-99	FMOD - Swedberg Contracting Corp.	Hileman	2	8/22	ICP/0600	ICP/2200
E-160	ENG6 C2M2	Hauge	3	8/29	ICP/0600	ICP/2200
E-27	HETF Bonnalie Logging Task Force	Tipitt	8	8/20	ICP/0600	ICP/2200
E-78	EXC2 Fousts Inc.	Vanalstyne	1	9/1	ICP/0600	ICP/2200
E-124	MBM2 West Wood	West	1	8/27	ICP/0600	ICP/2200
O-200	TFLD	Doyle	1	9/1	ICP/0600	ICP/2200
O-91	TFLD(T)	Coppert	1	8/23	ICP/0600	ICP/2200
O-12	HEQB	Letscher	1	8/20	ICP/0600	ICP/2200
O-34	HEQB(T)	Harger	1	8/22	ICP/0600	ICP/2200
7. Control Operations: TASK - Keep fire east of Sage Creek by constructing indirect fire line from the Div Z/K break to the north utilizing FS 406U and favorable ridge lines. PURPOSE - To protect the Sage Creek area and prevent fire spread to the west. END STATE - Control line established to meet the needs of the planned tactics.						
8. Special Instructions: Tactical firing operations may take place in order to maintain control objectives. Review heat-related illness symptoms in 2022 IRPG page 110. Keep 3 to 1 water to Gatorade/Powerade ratio. Utilize field maps for drop points, safety zones, and potential helispots. Ensure that communications are functional throughout the entire division.						
9. Division/Group Communication Summary						
Communications Summary						
Channel	Function	RX Frequency	RX Tone	TX Frequency	TX Tone	
2 TAC2	TAC	168.2000 N	110.9	168.2000 N	110.9	
6 BLM MICA	CMD	164.5250 N	NONE	163.0250 N	100.0	
7 FS MONUMENT	CMD	169.9250 N	107.2	165.5625 N	131.8	
8 CEDAR PEAK	CMD	170.9750 N	110.9	168.7000 N	110.9	
12 AIR TO GROUND PRIMARY	A/G	167.1250 N	107.2	167.1250 N	NONE	
13 AIR TO GROUND SECONDARY	A/G	166.6125 N	NONE	166.6125 N	NONE	
16 AIR GUARD	A/G	168.6250 N	NONE	168.6250 N	110.9	
Prepared by (Resource Unit Ldr) Susan Thiel				Date 08/19/2023	Time 2030	

DIVISION ASSIGNMENT LIST		1. Branch	2. Division Z (Page 1 / 4)			
3. Incident Name RIDGE CREEK		4. Operational Period From: 08/19/2023 0600 To: 8/20/2023 0600				
5. Operations Personnel						
Field Operations Section Chief	Cory Henry/Brian Wolvert (T)	Branch Director				
Planning Operations Section Chief	Joe Alyea/ Darren Bridges (T)	Division Supervisor		Chris White 541-517-6065		
6. Resources Assigned this Period						
RO#	Strike Team/Task Force/ Resource Designator	Leader	# People	LWD	Drop Off PT./Time	Pick Up PT./Time
C-8	CRW1 Black Mountain IHC	Gill	20	8/22	ICP/0600	ICP/2200
C-22	CRW2 Iron Mountain	Zavala	20	8/28	ICP/0600	ICP/2200
C-30	CRW2 Dust Busters Crew 10	Fabrick	20	9/1	ICP/0600	ICP/2200
O-13	FMOD Bailey Fallers – MOD1	Newman	2	8/18	ICP/0600	ICP/0600
O-92	FMOD - White Horse Forestry, Inc.	Mehaffey	2	8/23	ICP/0600	ICP/2200
E-28	ENG6 IPF #5641 E-81	White	26	8/29	ICP/0600	ICP/2200
E-156	ENG6 Inland Forest Mgt.	Radcliffe	3	8/29	ICP/0600	ICP/2200
E-185	WTT2 ID1TPN Teton County FPD #E411	Plennes	2	8/31	ICP/0600	ICP/2200
E-9	WTS2 Sagle FD 1271	Stuckey	2	8/18	ICP/0600	ICP/2200
E-182	WTS2 Sommers Contracting	Sommers	1	9/1	ICP/0600	ICP/2200
E-130	WTS2 Richardson Tree Care 418408	Richardson	1	9/1	ICP/0600	ICP/2200
7. Control Operations:						
TASK -Secure control lines that have been established ensuring that the conditions of lines are adequate for the strategies propose d.						
PURPOSE - Keep fire north of FSR 437 and east of the north fork of the Hayden Creek to protect private residences and industrial land to the southwest.						
END STATE- Stop southerly and westerly progression of the fire beyond FSR 206.						
8. Special Instructions:						
Tactical and planned firing operations may take place in order to maintain control objectives.						
Review heat-related illness symptoms 2022 IRPG Page 110.						
Keep 3 to 1 water to Gatorade/Powerade ratio.						
Utilize field maps for drop points, safety zones, and potential helispots.						
Ensure that comms are functional throughout the entire division.						
Maintain Situational Awareness around heavy equipment operations.						
9. Division/Group Communication Summary						
Communications Summary						
Channel	Function	RX Frequency	RX Tone	TX Frequency	TX Tone	
3 TAC 3	TAC	168.6000 N	110.9	168.6000 N	110.9	
6 MICA BLM	COMMAND	164.5250 N	NONE	163.0250 N	100.0	
7 Monument FS- Secondary	COMMAND	169.9250 N	107.2	165.5625 N	131.8	
8 Cedar Peak	CMD	170.9750	110.9	168.7000 N		
9 A/G Ignition	TAC	169.5000 N	NONE	165.5000 N	NONE	
12 A/G Primary	A/G	167.1250 N	107.2	167.1250 N	NONE	
13 A/G SECONDARY	A/G	166.6125 N	NONE	166.6125 N	NONE	
16 Air Guard	AIRGUARD	168.6250 N	NONE	168.6250 N	110.9	
Prepared by (Resource Unit Ldr) Susan Thiel				Date 08/18/2023	Time 1900	

DIVISION ASSIGNMENT LIST		1. Branch	2. Division Z (Page 2 / 4)			
3. Incident Name RIDGE CREEK		4. Operational Period From: 08/19/2023 0600 To: 8/20/2023 0600				
5. Operations Personnel						
Field Operations Section Chief	Cory Henry/Brian Wolvert (T)	Branch Director				
Planning Operations Section Chief	Joe Alyea/ Darren Bridges (T)	Division Supervisor		Chris White 541-517-6065		
6. Resources Assigned this Period						
RO#	Strike Team/Task Force/ Resource Designator	Leader	# People	LWD	Drop Off PT./Time	Pick Up PT./Time
E-131	WTS2 Teresas H2O To Go LLC - A30824	Moss	1	8/28	ICP/0600	ICP/2200
E-1	DZR2 Fousts Inc N00574ZR2	Newcomer	1	9/1	ICP/0600	ICP/2200
E-2	EXC2 Fousts Inc 35653	Bennett	1	9/1	ICP/0600	ICP/2200
E-7	GRD1 Foust Inc. L00652	Kramer	1	8/18	ICP/0600	ICP/2200
E-25	HETF Akre Logging Akre 1	Akre	7	8/20	ICP/0600	ICP/2200
E-60	DUMP Joe Hester Logging	Irvine	1	8/23	ICP/0600	ICP/2200
E-61	FRNT Joe Hester Logging	Schopp	1	8/23	ICP/0600	ICP/2200
E-68	LOGL Tracked Log Loader	Hester	2	8/26	ICP/0600	ICP/2200
E-69	LOGL Akre Logging	Blake	2	8/23	ICP/0600	ICP/2200
E-71	LOGT Akre Logging	Randolph	1	8/25	ICP/0600	ICP/2200
E-73	LOGP Akre Logging		2	8/23	ICP/0600	ICP/2200
E-183	WTS2 Jared Lewis	Lewis	1	8/31		
E-184	WTT2 Utah Fire	Justice	2	9/1		
7. Control Operations:						
TASK -Secure control lines that have been established ensuring that the conditions of lines are adequate for the strategies proposed.						
PURPOSE - Keep fire north of FSR 437 and east of the north fork of the Hayden Creek to protect private residences and industrial land to the southwest.						
END STATE- Stop southerly and westerly progression of the fire beyond FSR 206.						
8. Special Instructions:						
Tactical and planned firing operations may take place in order to maintain control objectives.						
Review heat-related illness symptoms 2022 IRPG Page 110 .						
Keep 3 to 1 water to Gatorade/Powerade ratio.						
Utilize field maps for drop points, safety zones, and potential helispots .						
Ensure that comms are functional throughout the entire division.						
Maintain Situational Awareness around heavy equipment operations.						
9. Division/Group Communication Summary						
Communications Summary						
Channel	Function	RX Frequency	RX Tone	TX Frequency	TX Tone	
3 TAC 3	TAC	168.6000 N	110.9	168.6000 N	110.9	
6 MICA BLM	COMMAND	164.5250 N	NONE	163.0250 N	100.0	
7 Monument FS-Secondary	COMMAND	169.9250 N	107.2	165.5625 N	131.8	
8 Cedar Peak	CMD	170.9750 N	110.9	168.7000 N	110.9	
9 A/G Ignition	TAC	169.5000 N	NONE	165.5000 N	NONE	
12 A/G Primary	A/G	167.1250 N	107.2	167.1250 N	NONE	
13 A/G SECONDARY	A/G	166.6125 N	NONE	166.6125 N	NONE	
16 Air Guard	AIRGUARD	168.6250 N	NONE	168.6250 N	110.9	
Prepared by (Resource Unit Ldr) Susan Thiel				Date 08/18/2023	Time 1730	

DIVISION ASSIGNMENT LIST			1. Branch		2. Division Z (Page 3 / 4)	
3. Incident Name RIDGE CREEK			4. Operational Period From: 08/20/2023 0600 To: 8/21/2023 0600			
5. Operations Personnel						
Field Operations Section Chief		Cory Henry/Brian Wolvert (T)		Branch Director		
Planning Operations Section Chief		Joe Alyea/ Darren Bridges (T)		Division Supervisor		Chris White 541-517-6065
6. Resources Assigned this Period						
RO#	Strike Team/Task Force/ Resource Designator	Leader	# People	LWD	Drop Off PT./Time	Pick Up PT./Time
O-88	TFLD (t)	Mefford	1	8/23	ICP/0600	ICP/2200
O-161	TFLD	Walker	1	8/30	ICP/0600	ICP/2200
O-163	TFLD	Berger	1	8/29	ICP/0600	ICP/2200
O-183	TFLD (T)	Wilson	1	8/31	ICP/0600	ICP/2200
O-25	HEQB	Rexrode	1	8/22	ICP/0600	ICP/2200
O-170	HEQB	Courson	1	8/27	ICP/0600	ICP/2200
O-38	HEQB (t)	Hess	1	8/21	ICP/0600	ICP/2200
7. Control Operations: TASK - Secure control lines that have been established ensuring that the conditions of lines are adequate for the strategies proposed. PURPOSE - Keep fire north of FSR 437 and east of the north fork of the Hayden Creek to protect private residences and industrial land to the southwest . END STATE- Stop southerly and westerly progression of the fire beyond FSR 206.						
8. Special Instructions: Tactical and planned firing operations may take place in order to maintain control objectives . Review heat-related illness symptoms 2022 IRPG Page 110 . Keep 3 to 1 water to Gatorade/Powerade ratio. Utilize field maps for drop points, safety zones, and potential helispots . Ensure that comms are functional throughout the entire division. Maintain Situational Awareness around heavy equipment operations.						
9. Division/Group Communication Summary						
Communications Summary						
Channel	Function	RX Frequency	RX Tone	TX Frequency	TX Tone	
3 TAC 3	TAC	168.6000 N	110.9	168.6000 N	110.9	
6 MICA BLM	COMMAND	164.5250 N	NONE	163.0250 N	100.0	
7 Monument FS- Secondary	COMMAND	169.9250 N	107.2	165.5625 N	131.8	
8 Cedar Peak	CMD	170.9750 N	110.9	168.7000 N	110.9	
9 A/G Ignition	TAC	169.5000 N	NONE	165.5000 N	NONE	
12 A/G Primary	A/G	167.1250 N	107.2	167.1250 N	NONE	
13 A/G SECONDARY	A/G	166.6125 N	NONE	166.6125 N	NONE	
16 Air Guard	AIRGUARD	168.6250 N	NONE	168.6250 N	110.9	
Prepared by (Resource Unit Ldr(t)) Susan Thiel				Date 08/19/2023	Time 1900	

DIVISION ASSIGNMENT LIST			1. Branch		2. Division Z (Page 4 / 4)	
3. Incident Name RIDGE CREEK			4. Operational Period From: 08/20/2023 0600 To: 8/21/2023 0600			
5. Operations Personnel						
Field Operations Section Chief		Cory Henry/Brian Wolvert (T)		Branch Director		
Planning Operations Section Chief		Joe Alyea/ Darren Bridges (T)		Division Supervisor		Chris White 541-517-6065
6. Resources Assigned this Period						
RO#	Strike Team/Task Force/ Resource Designator	Leader	# People	LWD	Drop Off PT./Time	Pick Up PT./Time
O-137	SOFR	Bunce	1	8/28	ICP/0600	ICP/2200
O-138	SOFR (t)	Canning	1	8/29	ICP/0600	ICP/2200
O-166	EMTF	McGuire	1	8/27 8/26	ICP/0600	ICP/2200
E-80	RAT MESU Kootenai Fire & Rescue	Whaley	2	8/23	ICP/0600	ICP/2200
O-103	REMS MESU NIM Medical	Mason	4	8/23	ICP/0600	ICP/2200
E-155	AMB1 ALS Boundary	Hartman	2	8/29	ICP/0600	ICP/2200
C-23	PR Reforest CRW2	Pantaleon	20	8/28		
C-33	CRW2 Dust Busters	Hazen-Baker	15	9/1		
7. Control Operations: TASK -Secure control lines that have been established ensuring that the conditions of lines are adequate for the strategies proposed PURPOSE - Keep fire north of FSR 437 and east of the north fork of the Hayden Creek to protect private residences and industrial land to the southwest END STATE- Stop southerly and westerly progression of the fire beyond FSR 206 206						
8. Special Instructions: Tactical and planned firing operations may take place in order to maintain control objectives Review heat-related illness symptoms 2022 IRPG Page 110 Keep 3 to 1 water to Gatorade/Powerade ratio. Utilize field maps for drop points, safety zones, and potential helispots Ensure that comms are functional throughout the entire division. Maintain Situational Awareness around heavy equipment operations.						
9. Division/Group Communication Summary						
Communications Summary						
Channel	Function	RX Frequency	RX Tone	TX Frequency	TX Tone	
3 TAC 3	TAC	168.6000 N	110.9	168.6000 N	110.9	
6 MICA BLM	COMMAND	164.5250 N	NONE	163.0250 N	100.0	
7 Monument FS-Secondary	COMMAND	169.9250 N	107.2	165.5625 N	131.8	
8 Cedar Peak	CMD	170.9750 N	110.9	168.7000 N	110.9	
9 A/G Ignition	TAC	169.5000 N	NONE	165.5000 N	NONE	
12 A/G Primary	A/G	167.1250 N	107.2	167.1250 N	NONE	
13 A/G SECONDARY	A/G	166.6125 N	NONE	166.6125 N	NONE	
16 Air Guard	AIRGUARD	168.6250 N	NONE	168.6250 N	110.9	
Prepared by (Resource Unit Ldr(t)) Susan Thiel				Date 08/18/2023	Time 1900	

DIVISION ASSIGNMENT LIST		1. Branch	2. Division			
3. Incident Name RIDGE CREEK		4. Operational Period From: 08/20/2023 0600 To: 8/21/2023 0600				
5. Operations Personnel						
Field Operations Section Chief	Cory Henry/Brian Wolvert (T)	Branch Director				
Planning Operations Section Chief	Joe Alyea/Darren Bridges (T)	Division Supervisor			Steven Thime-STPS 719-660-5567	
6. Resources Assigned this Period						
RO#	Strike Team/Task Force/ Resource Designator	Leader	# People	LWD	Drop Off PT./Time	Pick Up PT./Time
E-58	ENG6 Solomon Fire Equipt. LLC	Hawley	3	8/24	ICP/0600	ICP/2200
E-158	ENG6 Roy Inghram - <i>Flame Chasers</i>	Manyhides	3	8/31	ICP/0600	ICP/2200
E-172	ENG6 Daniel Martin 512150	Martin	3	8/31	ICP/0600	ICP/2200
E-173	ENG6 Days LLC	Keller	3	8/30	ICP/0600	ICP/2200
E-175	ENG6 Fire Control Resources	Marsali <i>s</i>	3	<i>9/1 8/31</i>	ICP/0600	ICP/2200
E-179	ENG Mervin Bishop C83845	Kirkaldi <i>e</i>	3	9/1	ICP/0600	ICP/2200
E-180	ENG6 Mervin Bishop A98810	Lamebull	3	9/1	ICP/0600	ICP/2200
E-181	ENG6 Mervin Bishop C84111	Winfree	3	9/1	ICP/0600	ICP/2200
E-174	ENG6 Starkcorp Inc. B40745	Stark	3	9/2	ICP/0600	ICP/2200
<i>E-178</i>	<i>ENG6 Bishop D36735</i>	<i>Haakanson</i>	<i>3</i>	<i>9/1</i>		
<i>0-204</i>	<i>STEN</i>	<i>Mcahren</i>	<i>1</i>	<i>9/2</i>		
7. Control Operations: TASK - Coordinate with interagency cooperators for structure protection planning. PURPOSE - Develop cohesive strategies amongst responding and coordinating agencies. END STATE - Structure protection plan developed by all cooperators that can be easily implemented that can be easily implemented now and into the future.						
8. Special Instructions: Utilize field maps to complete structure assessments. Review heat-related illness symptoms 2022 IRPG Page 110. Keep 3 to 1 water to Gatorade/Powerade ratio. Be prepared for traffic and public interactions in the wildland urban interface.						
9. Division/Group Communication Summary						
Communications Summary						
Channel	Function	RX Frequency	RX Tone	TX Frequency	TX Tone	
4 TAC 4	TAC	166.7250 N	110.9	166.7250 N	110.9	
6 BLM MICA	CMD	164.5250 N	NONE	163.0250 N	100.0	
7 FS MONUMENT	CMD	169.9250 N	107.2	165.5625 N	131.8	
8 CEDAR PEAK	CMD	170.9750 N	110.9	168.7000 N	110.9	
12 AIR TO GROUND PRIMARY	A/G	167.1250 N	107.2	167.1250 N	NONE	
13 AIR TO GROUND SECONDARY	A/G	166.6125 N	NONE	166.6125 N	NONE	
16 AIR GUARD	AIRGUARD	168.6250 N	NONE	168.6250 N	110.9	
Prepared by (Resource Unit Ldr) <i>Susan Thiel</i>				Date 08/19/2023	Time 2030	

DIVISION ASSIGNMENT LIST			1. Branch		2. Division Night	
3. Incident Name RIDGE CREEK			4. Operational Period From: 08/19/2023 0600 To: 8/20/2023 0600			
5. Operations Personnel						
Field Operations Section Chief		Cory Henry/Brian Wolvert (T)		Branch Director		
Planning Operations Section Chief		Joe Alyea/Darren Bridges (T)		Division Supervisor		Rufus Davis 352-427-0929
6. Resources Assigned this Period						
RO#	Strike Team/Task Force/ Resource Designator	Leader	# People	LWD	Drop Off PT./Time	Pick Up PT./Time
E-54	ENG6 Castle Mountain	Tsosie	3	8/23	ICP/1800	ICP/0600
E-55	ENG6 Bakken Robert	Bakken	3	8/22	ICP/1800	ICP/0600
E-57	ENG6 Castle Mountain C19623	Cork	3	8/23	ICP/1800	ICP/0600
E-58	ENG6 Solomons Fire Equip 299099	Hawley	3	8/23	ICP/1800	ICP/0600
E-157	ENG6 Windswept Wildfire	Grayson	3	8/31	ICP/1800	ICP/0600
E-159	ENG6 Daroche	Daroche	3	8/31	ICP/1800	ICP/0600
E-177	ENG6 Mervin Bishop C83832	Messerly	3	9/2	ICP/1800	ICP/0600
O-162	TFLD	Daugherty	1	8/30	ICP/1800	ICP/0600
O-136	SOFR	Carpenter	1	8/27	ICP/1800	ICP/0600
O-195	SOFR (t)	Gregory	1	8/31	ICP/1800	ICP/0600
O-96	EMPF	Allen	1	8/24	ICP/1800	ICP/0600
O-173	EMPF	Orde	1	8/30	ICP/1800	ICP/0600
7. Control Operations: TASK - Monitor fire behavior from a safe vantage point and support potential firing operations when needed. PURPOSE - Observe and report any fire movement that threatens the control lines. END STATE - Ensure fire remains inside established control lines.						
8. Special Instructions: Ridge Creek communications is staffed 24 hours per day. Ensure that comms are functional throughout the entire group. Limit driving along mountainous roads. IMT night contact is Planning Operations Section Chief						
9. Division/Group Communication Summary						
Communications Summary						
Channel	Function	RX Frequency	RX Tone		TX Frequency	TX Tone
5 TAC 5	TAC	166.7750 N	110.9		166.7750 N	110.9
6 BLM MICA	COMMAND	164.5250 N	NONE		163.0250 N	100.0
7 FS MONUMENT	COMMAND	169.9250 N	107.2		165.5625 N	131.8
8 CEDAR PEAK	COMMAND	170.9750 N	110.9		168.7000 N	110.9
10 MICA FS	COMMAND	169.9250 n	107.2		165.5625 N	167.9
12 AIR TO GROUND PRIMARY	A/G	167.1250 N	107.2		167.1250 N	NONE
13 AIR TO GROUND SECONDARY	A/G	166.6125 N	NONE		166.6125 N	NONE
16 Air Guard	AIRGUARD	168.6250 N	NONE		168.6250 N	110.9
Prepared by (Resource Unit Ldr) <i>Susan Thiel</i>				Date 08/19/2023	Time 2030	

AIR OPERATIONS SUMMARY 220		Prepared By: John Fish, AOB	Prepared: 08/19/2023	Prepared Time: 1730 hrs.
INCIDENT NAME: Ridge Creek Fire		OPERATIONAL PERIOD 8/20/23	START TIME 0900	END TIME 2000
			SUNRISE 0549	SUNSET 1950

REMARKS
 -All aircraft orders thru Air Attack if on scene, otherwise thru AOB
 -Large Electric Transmission Line through center of fire area
 -Retardant restricted in pre-designated avoidance areas and Chilco Trail ridge to the NE

MEDICAL RESPONSE AIRCRAFT
 * Follow Medical Plan ICS-206
 * Ridge Creek 3/3347
 * 8,000 feet MSL.
 * 24 Hours
 * Freq. 119.15

PERSONNEL	NAME	PHONE #	FREQUENCIES	AM	FM	FIXED-WING Avail/ Type/ Make-Model/ N#/ Base
AOBD	John Fish	850-843-0977	A/G PRI		167.1250	ATGS Planiforms: N690CP Call Sign - AA690 - assigned to fire N197GB Call Sign - AA115
ASGS(T)	Caleb Schreiber	715-628-6999	A/G SEC		166.6125	F/W Bases: Coeur d'Alene Airport (COE)
ATGS (AA690) ATGS (AA115)	Mark Winkelman Mike Bagan	775-848-9983 208-446-6770	A/G Marine Hayden Lake		169.5000	R/W Bases: Coeur d'Alene Airport (COE) Sand Point
UAS Modules UR31 UR32	Jordan Black Tim Gibilisco	865-250-3128 541-307-7177	KCOE Tower KCOE Ground Air-Air PRI Air-Air SEC	120.125 127.000 119.150 127.200		Air Tankers LATs - T-105 & T-132 SEATs - FB-205, FB-206, FB-217, FB-219 Scoopers - CL415s - S-261, S-262

HELICOPTERS

FAA N#	TY	MAKE/ MODEL	BASE	START	AVAIL	REMARKS	FAA N#	TY	MAKE/ MODEL	BASE	START	AVAIL	REMARKS
N581AJ	1	CH-47	COE	0800	0900	Bucket	N214KA	2	B212	COE	0800	0900	Bucket
N214B	1	B214	Sand Point	0800	0900	Bucket	N28HX	2	B205+	COE	0800	0900	Bucket/Rappel
N274TH	1	UH-60A+	COE	0800	0900	Bucket	N777TD	3	B407	COE	0800	0900	Bucket/Recon
N357KA	1	K-MAX	COE	0800	0900	Bucket assigned to fire	N102RF	3	AS350B2	COE	0800	0900	Bucket/Recon
N2773H	2	B205++	COE	0800	1200	Bucket assigned to fire							

**Ridge Creek Fire
EA Silver Team Phone List**

Position	Name	Cell
Incident Commander	Steve Miller	414-308-6861
Deputy Incident Commander (trainee)	Chris Woods	573-315-8394
Incident Commander (trainee)	Maris Gabliks	609-235-7524
Safety Officer	Lee Osterland	231-357-7381
Safety Officer	Terry Trapp	715-610-3695
Safety Officer (trainee)	Kent Glazer	715-340-0891
Safety Officer Line	Craig Bunce	626-808-1270
Safety Officer Line	Sean Obrien	732-690-9715
Safety Officer Line	Tim Carpenter	607-664-1021
Safety Officer Line	Chris O'Brien	603-419-9153
Safety Officer Line (trainee)	David Canning	231-878-5919
Fire Information	FireNet	208-953-7022
Public Information Officer	Clark McCreedy	989-292-9373
Liaison Officer	Ron Robinson	612-860-1257
Operations Section Chief	Joe Alyea	509-671-1610
Operations Section Chief	Cory Henry	906-280-4144
Air Operations Branch Director	John Fish	850-843-0977
Planning Section Chief	Robbi Mecus	518-524-6622
Planning Section Chief	Peter Fischer	304-618-9083
Planning Section Chief (trainee)	Aaron Young	608-558-5844
Check-In/Demob	General	208-891-6074
Logistics Section	General	208-891-6611
Medical Unit Leader	Mike Passarelli	330-633-0547
Communications Unit	Arnold Irvine	814-730-0389
Communications- NIGHT	Night	208-891-6392
Finance Section	FireNet	208-510-5158
Hudlow Base Satellite Phone	IC	941-248-0924
Hudlow Base Satellite Phone	Operations	619-775-3172
Hudlow Base Satellite Phone	Safety	858-324-3773

INCIDENT RADIO COMMUNICATIONS PLAN (ICS 205)

Controlled Unclassified Information//Basic

1. Incident Name: Ridge Creek Fire		2. Date/Time Prepared: Date: 08/19/23 Time: 1345		3. Operational Period: DAY SHIFT		Date/Time To: 08/21/23 0600	
--	--	---	--	---	--	--	--

4. Basic Radio Channel Use:		Ch #	Function	Channel Name	Assignment	RX Freq	RX Tone/NAC	TX Freq	TX Tone/NAC	Mode (A,D, or M)	Remarks
1	1	TACTICAL	TAC 1	DIV A	168.0500 N	110.9	168.0500 N	110.9	110.9	A	
1	2	TACTICAL	TAC 2	DIV K	168.2000 N	110.9	168.2000 N	110.9	110.9	A	
1	3	TACTICAL	TAC 3	DIV Z	168.6000 N	110.9	168.6000 N	110.9	110.9	A	
1	4	TACTICAL	TAC 4	STRUCTURE GROUP	166.7250 N	110.9	166.7250 N	110.9	110.9	A	
1	5	TACTICAL	TAC 5	DIV E	166.7750 N	110.9	166.7750 N	110.9	110.9	A	UNSTAFFED
1	6	COMMAND	MICA/BLM	ALL D IVS	164.5250 N	NONE	163.0250 N	100.0	100.0	A	BLM MICA RPTR
1	7	COMMAND	MONUMENT	ALL DIVS	169.9250 N	107.2	165.5625 N	131.8	131.8	A	FS MONUMENT
1	8	COMMAND	CEDAR MTN	ALL DIVS	170.9750 N	110.9	168.7000 N	110.9	110.9	A	Cedar Mtn (formally Cedar PK)
1	9	TACTICAL	A/G Marine	Marine Group	169.5000 N	NONE	169.5000	NONE	NONE	A	Boat to scoopor coordination
1	10	COMMAND	MICA FS	ALL DIVS	169.9250 N	107.2	165.5625 N	167.9	167.9	A	
1	12	TACTICAL	A/G PRIMARY	All Divs	167.1250 N	107.2	167.1250 N	NONE	NONE	A	A/G PRIMARY
1	13	TACTICAL	A/G SECONDARY	All Divs	166.6125 N	NONE	166.6125 N	NONE	NONE	A	A/G SECONDARY
1	14	EMS	EMS	EMS 2	155.2800 N	NONE	155.2800 N	156.7	156.7	A	EMS 2
1	16	AIR GUARD	AIR GUARD	ALL DIVS	168.6250 N	NONE	168.6250 N	110.9	110.9	A	EMERGENCY CALL TO AIRCRAFT

5. Special Instructions:	
6. Prepared By	Communications Unit Leader
Name : ARNIE IRVINE	
Signature: /s/ Arnie Irvine	
Date/Time 8/19/23 1345	

MEDICAL PLAN (ICS 206 WF)

Controlled Unclassified Information//Basic

K	Point of Contact:	O-174 EMPF (Kemmerer) (321)750-1197 & O-172 EMPF(Wallace)(406) 239-1811		
	EMS Responders & Capability:	ALS		
	Equipment Available on Scene:	ALS		
	Medical Emergency Channel:	Cedar Peak		
	ETA for Ambulance to Scene:			
	Air:			
	Ground:			
	Approved Helispot	H-50	H-44	
	LAT:	47 51'757 N	47 52.090N	
	Long:	116 33'295W	116 35.503W	
E	Point of Contact:	Unstaffed		
	EMS Responders & Capability:			
	Equipment Available at Scene:			
	Medical Emergency Channel:	Cedar Peak		
	ETA for Ambulance			
	Air			
	Ground			
	Lat: Long:			
Z	Point of Contact:	O-102 REM (Mason) (605) 545-4293 & E-80 RAT (Whaley) (208) 869-2657 & O-166 EMTF (McGuire) (860) 748-9921 & E-155 Boundary Amb ALS (Hutcherson) (208)304-4036		
	EMS Responders & Capability:	ALS		
	Equipment Available on Scene:	RAT & REM & Ambulance		
	Medical Emergency Channel:	Cedar Peak		
	ETA for Ambulance to Scene:			
	Air:	40 min		
	Ground:	10 min to the Alpha/Zulu break		
	Approved Helispot:	H-10	H-44	
	Lat:	N47 49.300	47 52.090N	
	Long:	116 39.650W	116 35.503W	
Hudlow Base	Point of Contact:	O-19 EMTF (Wolfstitch) (520)508-9807 & O-20 EMTF (Axel) (612) 532-5181 & E-122 Idaho Fall Ambulance (Hirschi) (208) 221-6979 & O-6.55 MEDL(t) (Eggert) (708)691-3111 & O-171 EMPF (Keys) (520) 395-6832		
	EMS Responders & Capability:	ALS		
	Equipment Available on Scene:	ALS Amb		
	Medical Emergency Channel:	Cedar Peak		
	ETA for Ambulance to Scene:	ALS Ambulance Staged at Base		
	Air:			
	Ground:			
	Approved Helispot:	H-70	H-74	
	Lat:	N47 50.335	47 48.400N	
	Long:	116 33.685	116 30.622W	
Structure Protection	Point of Contact:	Unstaffed		
	EMS Responders & Capability:			
	Equipment Available on Scene:			
	Medical Emergency Channel:			
	ETA for Ambulance to Scene:			
	Air:			
	Ground:			
	Approved Helispot:			
	Lat:			
	Long:			

MEDICAL PLAN (ICS 206 WF)

Controlled Unclassified Information//Basic

Night Operations	Point of Contact:	O-96 EMPF (Allen) (208) 403-9937 & O-173 EMPF (Orde) (307)399-7316	
	EMS Responders & Capability:	ALS	
	Equipment Available on Scene:	ALS	
	Medical Emergency Channel:	Cedar Peak	
	ETA for Ambulance to Scene:		
	Air:		
	Ground:		
	Approved Helispot:	All approved Helispots as needed	
	Lat:		
	Long:		
7. Prepared By (Medical Unit Leader)		8.	9. Reviewed By (Safety Officer)
Mike Passarelli MEDL <i>Mike Passarelli MEDL</i>		8/19/23	Lee Osterland <i>Lee Osterland</i>
			10. Date/Time 8/19/23 1700

Incident:
Ridge Creek Fire

Date:
8/20/2023

Shift:
Day/Night



SAFETY MESSAGE

SAFETY IS OUR FIRST PRIORITY

Fire fighter safety comes first on every fire, every time



“Safety is the mirror reflecting the quality of your work”

Major Risks and Hazards

<u>DUSTY ROADS</u>	Transition
Foot Travel	Flat Tires
Communications	Fatigue



Utilize Tenders to Mitigate

COMMUNICATIONS

Communication Responsibilities: CLEAR-CONCISE-TO THE POINT

All Firefighters have five communication responsibilities

- ***Briefings** – All resources require briefings. Use briefing checklist in IRPG.
- ***Debrief Actions** – as necessary. Use pocket guide After Action Review to stimulate discussion and provide guidance.
- ***Communicate Hazards to Others** –
- ***Acknowledge messages** –
- ***Ask if you do not know** –Ask questions in unfamiliar situations. The only dumb question is the one you did not ask.



The greatest problem with communication is the illusion that it has been achieved

FOOTING / FOOT CARE

STEEP AND ROCKY TERRAIN MAKE FOOT TRAVEL HAZARDOUS.

TAKE CARE OF YOUR FEET AND... THEY WILL TAKE CARE OF YOU!

Safety Officer

Lee Osterland SOFC, Terry Trapp SOF2, Tony Petrilli SOFC,
Ken Glazer SOF2(T)

Line Safety

Craig Bunce, Chris O'Brien, TJ
Carpenter, Sean O'Brien, Dave
Canning, Mark Gregory

CHECK-IN PROCEDURE

1. Scan the QR code on the cover of the IAP and click the Check-in button
 - o If you have questions, visit Check-In in the Plans yurt at ICP and we can assist you with the virtual form, or call 208-891-6074
2. Check in with Finance – see the Finance page

DEMOB PROCEDURE

- ** If you need a flight arranged, use the QR code on the cover of the IAP and click the Flight Request button to submit your request 72 hours prior to your anticipated demob time. If you have trouble with the form, you may visit Demob in person or call 208-891-6074.
- ** If you are on the Tentative Release list on the next page and you don't think you should be, contact your supervisor first to discuss, and then visit or call Demob.

How to demob:

1. If you are not on the Tentative Release list on the next page, your section chief needs to submit a 213 to Demob to release you at least 24 hours in advance (72 hours if flight is needed).
2. At your scheduled release date/time listed below, visit Demob in the Plans yurt at ICP. The Demob process is mostly in person (not virtual) at this time. However, anyone who needs to demob remotely (if you cannot come to ICP) can call 208-891-6074.

LOGISTICS SERVICE HOURS

BREAKFAST:	0530 – 0830
DINNER:	1800 – 2130
SHOWERS:	0500 – 2200 (CLOSED 1100 – 1300)
SUPPLY & GROUND SUPPORT:	0600 – 2130
FUEL:	0600 – 2130 (CLOSED 1300 – 1500)
WEED WASH (at Staging)	0700 – 2000 (CLOSED 1200 – 1400)
REEFER:	0530 – 2130
ORDERING:	0700 – 2000

- PLEASE camp only in Team designated areas!

TENATIVE RELEASE

08/20/2023

EQUIPMENT

E-6	0700	ENG6	NDNDS
E-28	0700	ENG4	IPF - D1
E-72	0700	MBM1	FOUSTS

OVERHEAD

O-10	0715	DIVS	WHITE, CHRISTOPHER SEAN
O-22	0715	ORDM	ADAMCIK, CHRISTIAN
O-65	0715	LSCC	SCHUG, STEVEN MARK
O-97	0715	ICCI	GABLIKS, MARIS G

08/21/2023

EQUIPMENT

E-16	0700	GWT2	GWT2 - BALL & BALL
E-27	0700	FEL1	HETF
E-31	0710	DZR2	DZR2 - PATRICK MADDEN
E-53	0710	ENG6	ENG6 - NORTHWEST MANAGEMENT

OVERHEAD

O-12	0715	HEQB	LETSCHER, ASHLEY M
O-20	0715	EMTF	WOLFSTICH, STEPHEN
O-23	0715	REAF	SLIFKO, MATTHEW ROBERT
O-24	0730	READ	YOUNG, WILL TYLER
O-70	0730	EQPM	MAGEE, KYLE EVAN
O-129	0730	REAF	ROBINSON, CHRISTOPHER W

08/22/2023

CREWS

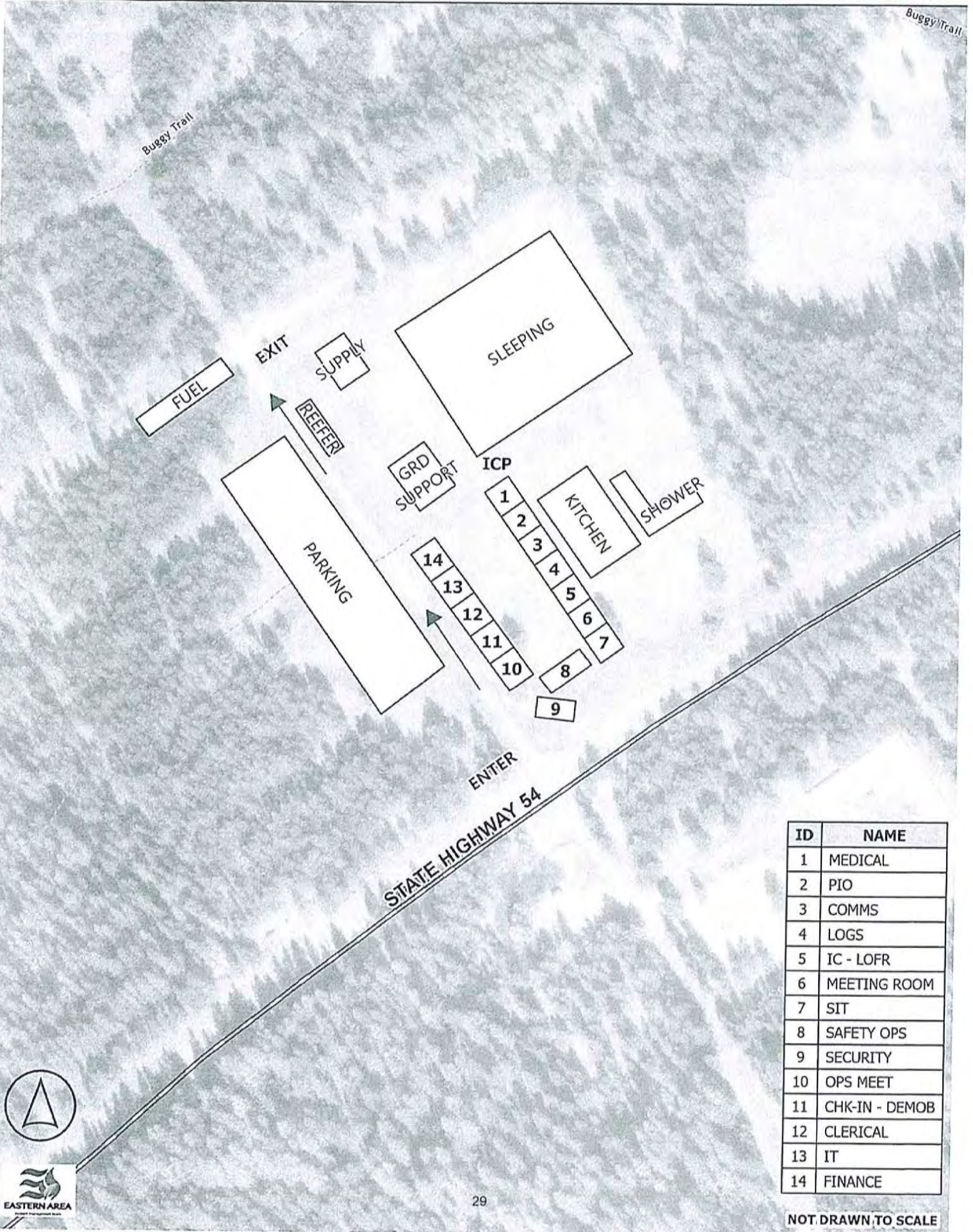
C-5	0700	CRW1	CRW1 - KLAMATH IHC
C-7	0715	CR2I	CR2I - FIRESTORM WILDLAND
C-14	0730	CRWC	CRWC - SAWC #1

EQUIP

E-66		HND1	HND1 - GRANTS CUSTOM
------	--	------	----------------------

OVERHEAD

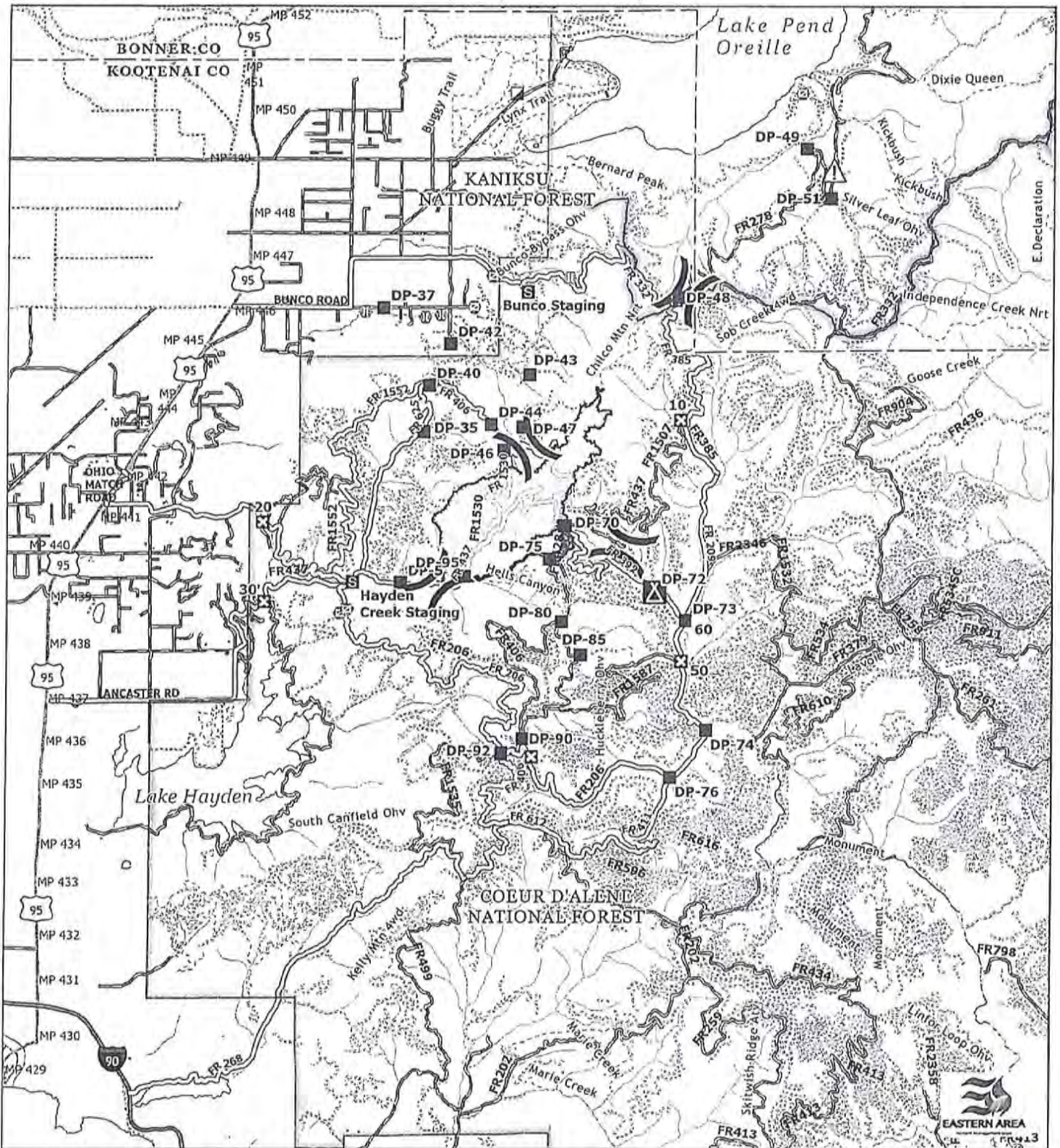
O-35		TFLD	JERMAN, JASON LEE
O-38		HEQB	HESS, NATE JOSEPH
O-44		BCMG	CROWELL, TIM S
O-63		IMET	EAGAN, SHANE MICHAEL
O-71		EQPM	MCELREATH, PATRICK M
O-52		ORDM	MEADOWS, LAURIE



ID	NAME
1	MEDICAL
2	PIO
3	COMMS
4	LOGS
5	IC - LOFR
6	MEETING ROOM
7	SIT
8	SAFETY OPS
9	SECURITY
10	OPS MEET
11	CHK-IN - DEMOB
12	CLERICAL
13	IT
14	FINANCE

NOT DRAWN TO SCALE

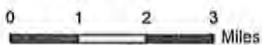




**RIDGE CREEK
IDIPF000447**

3,517 acres
8/18/2023 1236 hrs

North American 1983 Datum,
Lat/Long Grid



- Wildfire Daily Fire Perimeter
- Contained
- Uncontained
- Unimproved Road
- Improved Road
- Main Access Roads

- Division Break
- Camp
- Incident Command Post
- Drop Point
- Closure
- Staging Area

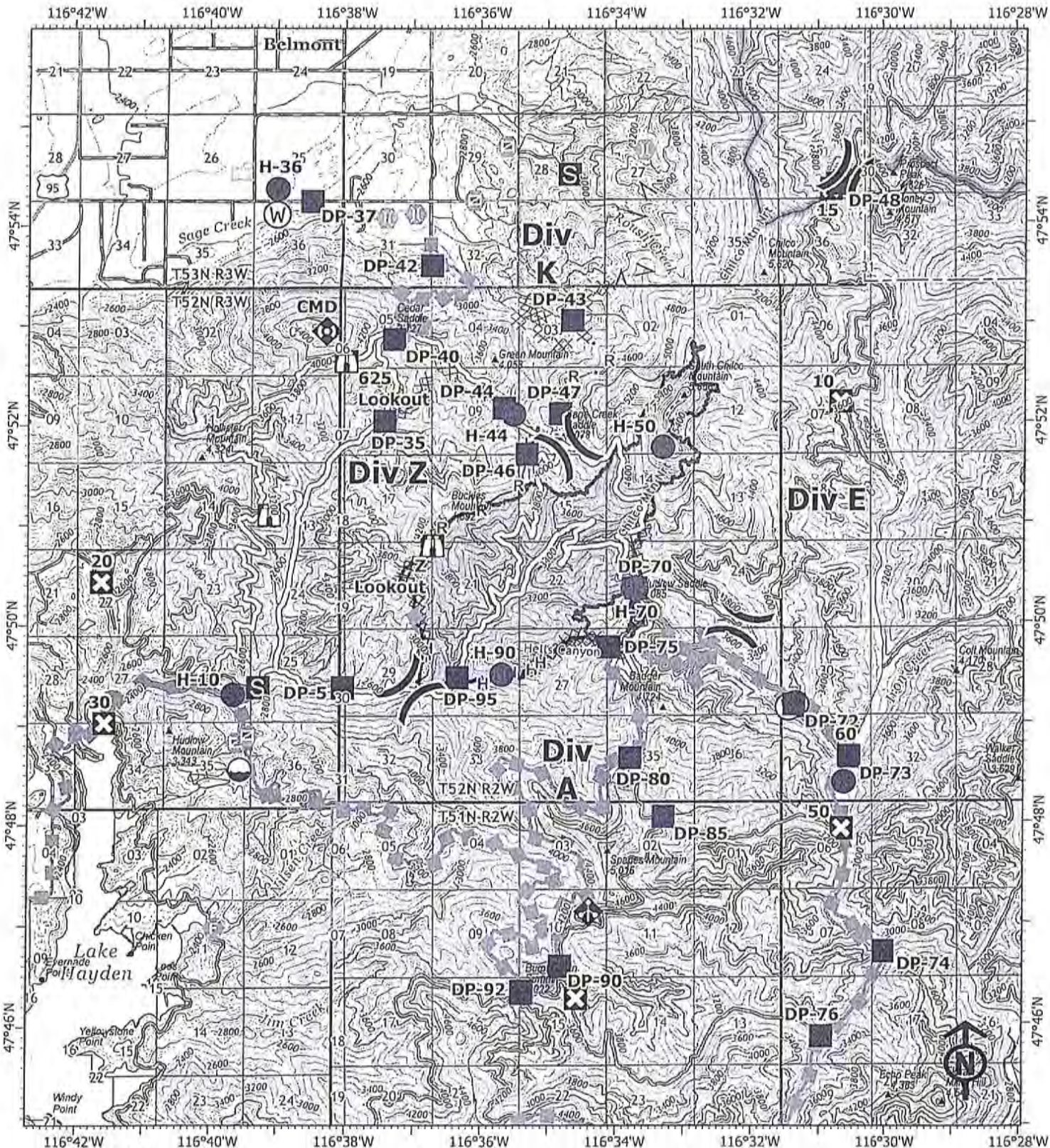
- Gate
- Bridge
- Hazard
- Land Management**
- BLM
- State

- USFS**
- Boundaries**
- County
- National Forest



Hudlow Base Camp

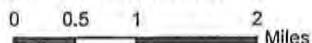
- Hwy 95 to E Ohio Match Rd.
- E Ohio Match Rd turns into FR206
- At Hayden Creek Staging Turn
RIGHT
- Staying on FR206 till DP 92
- DP 92 turn LEFT – Take the RIGHT
Fork
- Stay on FR206 until you get to
FR209
- Stay on FR209 until FR392 turn
LEFT on FR392
- Camp is at DP72



IAP
RIDGE CREEK
IDIPF000447

08/19/2023 Day

3,517 acres at 8/18/2023 1236 hrs
 Acres from IR



- | | | | |
|--------------------|-----------------------|-----------------------------------|---------------------------------|
| () Division Break | ⊗ Value at Risk | ⊗ Completed Dozer Line | — Access or Improved Road |
| ● Dip Site | ⊗ Gate | — Completed Hand Line | — Escape Route |
| ● Helispot | ⊗ Fire Station | — Completed Road as Line | — Contained |
| ■ Drop Point | ⊗ Bridge | — Planned Dozer Line | — Uncontained |
| ⊗ Closure | ⊗ Repair Point | ∧ Planned Fuel Break | ▭ Wildfire Daily Fire Perimeter |
| ⊗ Camp | ⊗ Mobile Weather Unit | H Planned Hand Line | BLM |
| ⊗ Staging Area | ⊗ Repeater | M Planned Mixed Construction Line | State |
| ⊗ Lookout | ⊗ Water Source | R Planned Road as Line | USFS |



MEDICAL PLAN (ICS 206a WF)

Controlled Unclassified Information//Basic

Medical Incident Report																													
<p>FOR A NON-EMERGENCY INCIDENT, WORK THROUGH CHAIN OF COMMAND TO REPORT AND TRANSPORT INJURED PERSONNEL AS NECESSARY.</p> <p>FOR A MEDICAL EMERGENCY: IDENTIFY ON SCENE INCIDENT COMMANDER BY NAME AND POSITION AND ANNOUNCE "MEDICAL EMERGENCY" TO INITIATE RESPONSE FROM IMT COMMUNICATIONS/DISPATCH.</p>																													
<p>Use the following items to communicate situation to communications / dispatch.</p>																													
<p>1. CONTACT COMMUNICATIONS / DISPATCH (Verify correct frequency prior to starting report) <i>Ex: "Communications, Div. Alpha. Stand-by for Emergency Traffic."</i></p> <p>2. INCIDENT STATUS: Provide incident summary (including number of patients) and command structure. <i>Ex: "Communications, I have a Red priority patient, unconscious, struck by a falling tree. Requesting air ambulance to Forest Road 1 at (Lat./Long.) This will be the Trout Meadow Medical, IC is TFLD Jones. EMT Smith is providing medical care."</i></p>																													
Severity of Emergency / Transport Priority	<input type="checkbox"/> RED / PRIORITY 1 Life or limb threatening injury or illness. Evacuation need is IMMEDIATE <i>Ex: Unconscious, difficulty breathing, bleeding severely, 2°- 3° burns more than 4 palm sizes, heat stroke, disoriented.</i> <input type="checkbox"/> YELLOW / PRIORITY 2 Serious Injury or illness. Evacuation may be DELAYED if necessary. <i>Ex: Significant trauma, unable to walk, 2°- 3° burns not more than 1-3 palm sizes.</i> <input type="checkbox"/> GREEN / PRIORITY 3 Minor Injury or illness. Non-Emergency transport <i>Ex: Sprains, strains, minor heat-related illness.</i>																												
Nature of Injury or Illness & Mechanism of Injury			<i>Brief Summary of injury or illness (Ex: Unconscious, Struck by Falling Tree)</i>																										
Transport Request			<i>Air Ambulance / Short Haul / Hoist Ground Ambulance / Other</i>																										
Patient Location			<i>Descriptive Location & Lat. Long (WGS84)</i>																										
Incident Name			<i>Geographic Name + "Medical" (Ex: Trout Meadow Medical)</i>																										
On-Scene Incident Commander			<i>Name of on-scene IC of incident within an Incident (Ex: TFLD Jones)</i>																										
Patient Care			<i>Name of Care Provider (Ex: EMT Smith)</i>																										
<p>3. INITIAL PATIENT ASSESSMENT: Complete this section for each patient as applicable (start with the most severe patient) Patient Assessment: See IRPG Page 106</p>																													
Treatment:																													
<p>4. TRANSPORT PLAN: Evacuation Location (if different): (Descriptive Location (drop point, intersection, etc.) or Lat. / Long.) Patient's ETA to Evacuation Location:</p>																													
Helispot / Extraction Site Size and Hazards:																													
<p>5. ADDITIONAL RESOURCES / EQUIPMENT NEEDS: <i>Example: Paramedic/EMT, Crews, Immobilization Devices, AED, Oxygen, Trauma Bag, IV/Fluid(s), Splints, Rope rescue, Wheeled litter, HAZMAT, Extrication</i></p>																													
<p>6. COMMUNICATIONS: Identify State Air/Ground EMS Frequencies and Hospital Contacts as applicable</p> <table border="1" style="width: 100%; border-collapse: collapse;"> <thead> <tr> <th style="width: 10%;">Function</th> <th style="width: 20%;">Channel Name/Number</th> <th style="width: 15%;">Receive (RX)</th> <th style="width: 15%;">Tone/NAC *</th> <th style="width: 15%;">Transmit (TX)</th> <th style="width: 25%;">Tone/NAC *</th> </tr> </thead> <tbody> <tr> <td>COMMAND</td> <td></td> <td></td> <td></td> <td></td> <td></td> </tr> <tr> <td>AIR-TO-GRND</td> <td></td> <td></td> <td></td> <td></td> <td></td> </tr> <tr> <td>TACTICAL</td> <td></td> <td></td> <td></td> <td></td> <td></td> </tr> </tbody> </table>						Function	Channel Name/Number	Receive (RX)	Tone/NAC *	Transmit (TX)	Tone/NAC *	COMMAND						AIR-TO-GRND						TACTICAL					
Function	Channel Name/Number	Receive (RX)	Tone/NAC *	Transmit (TX)	Tone/NAC *																								
COMMAND																													
AIR-TO-GRND																													
TACTICAL																													
<p>7. CONTINGENCY: Considerations: If primary options fail, what actions can be implemented in conjunction with primary evacuation method? Be thinking ahead.</p>																													
<p>8. ADDITIONAL INFORMATION: Updates/Changes, etc.</p>																													
<p>REMEMBER: Confirm ETA's of resources ordered. Act according to your level of training. Be Alert. Keep Calm. Think Clearly. Act Decisively.</p>																													