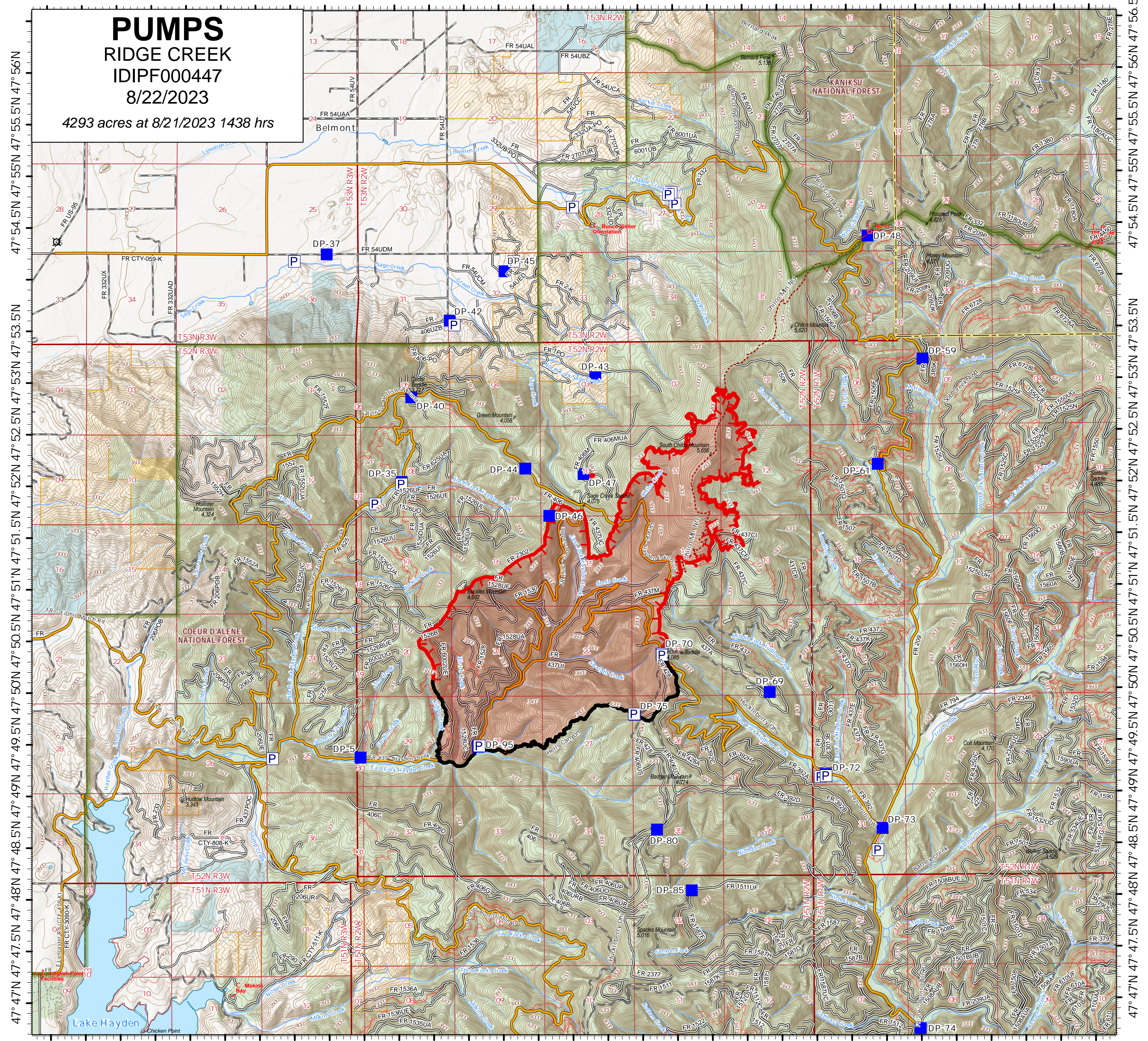


116° 42.5'W 116° 41.5'W 116° 40.5'W 116° 39.5'W 116° 38.5'W 116° 37.5'W 116° 36.5'W 116° 35.5'W 116° 34.5'W 116° 33.5'W 116° 32.5'W 116° 31.5'W 116° 30.5'W 116° 29.5'W 116° 28.5'W 116° 27.5'W



116° 42.5'W 116° 41.5'W 116° 40.5'W 116° 39.5'W 116° 38.5'W 116° 37.5'W 116° 36.5'W 116° 35.5'W 116° 34.5'W 116° 33.5'W 116° 32.5'W 116° 31.5'W 116° 30.5'W 116° 29.5'W 116° 28.5'W 116° 27.5'W

Property Status	Trackable ID	Serial Number	Comments	Latitude WGS84 DDM	Longitude WGS84 DDM
In Field		CDK-1222-0281	Volume Pump- serial number is "code number"	47° 49.356' N	116° 39.302' W
In Field		WZBY-1122337	Draft site	47° 51.816' N	116° 37.810' W
Unknown		Property # CDK 170. 24983. 134	One pump currently in operation with (2) spare volume pumps on site	47° 49.154' N	116° 31.436' W
Unknown		025626		47° 49.471' N	116° 36.333' W
Unknown		Private contractor pump		47° 48.444' N	116° 30.613' W
In Field	Cache prop # 28173			47° 50.351' N	116° 33.696' W
In Field	Cache Prop # 025882 Mark 3	CDK 025882		47° 50.351' N	116° 33.700' W
In Field	Cache prop # 28118 Mark 3	CDK-0148-28118	Broken bad switch returned to ICP	47° 50.353' N	116° 33.698' W
In Field	Cache prop # 0978 Wick 375	CDK01 80978		47° 50.340' N	116° 33.698' W
In Field	Cache prop # 26019			47° 49.164' N	116° 31.353' W
In Field	Cache prop # 198			47° 49.164' N	116° 31.353' W
Unknown		24982		47° 52.006' N	116° 37.430' W
In Field	026020			47° 53.543' N	116° 36.660' W
In Field	268			47° 54.157' N	116° 35.799' W
Unknown	20221			47° 54.703' N	116° 33.476' W
Unknown	27001			47° 54.816' N	116° 33.529' W
Unknown	25994			47° 54.797' N	116° 33.570' W
Unknown	26026			47° 54.678' N	116° 34.951' W
Incident Supply	CDK-0148-26070	CDK-0148-26070	Active fill site to pumkin by road at driveway end	47° 54.167' N	116° 38.957' W
Unknown		Mark 3 CDK-0148-28162		47° 50.341' N	116° 33.697' W
Unknown	Mark 3 CDK-0148-06631			47° 50.341' N	116° 33.699' W
Unknown		Wick 375 026005	Broken Carb sent back to ICP	47° 50.338' N	116° 33.699' W
Unknown		Wick 375 025997		47° 50.342' N	116° 33.698' W
Unknown		Mark 3 25617		47° 50.341' N	116° 33.696' W
Unknown		Mark 3 27981		47° 50.340' N	116° 33.697' W
In Field	26229			47° 49.766' N	116° 34.095' W
In Field	28170			47° 49.771' N	116° 34.104' W
In Field	25910			47° 49.771' N	116° 34.104' W

Legend

- Accountable Property
- P Pump
- Event Point
- Drop Point
- Event Polygon
- Wildfire Daily Fire Perimeter
- Perimeter Line
- Contained
- Uncontained
- Roads
- Unimproved Road
- Improved Road
- Main Access Roads
- DE - DECOMMISSIONED
- Chilco Trail
- Trail



SA Team Gold
8/22/2023 1314
Acres from IR and GPS
North American 1983 Datum.

