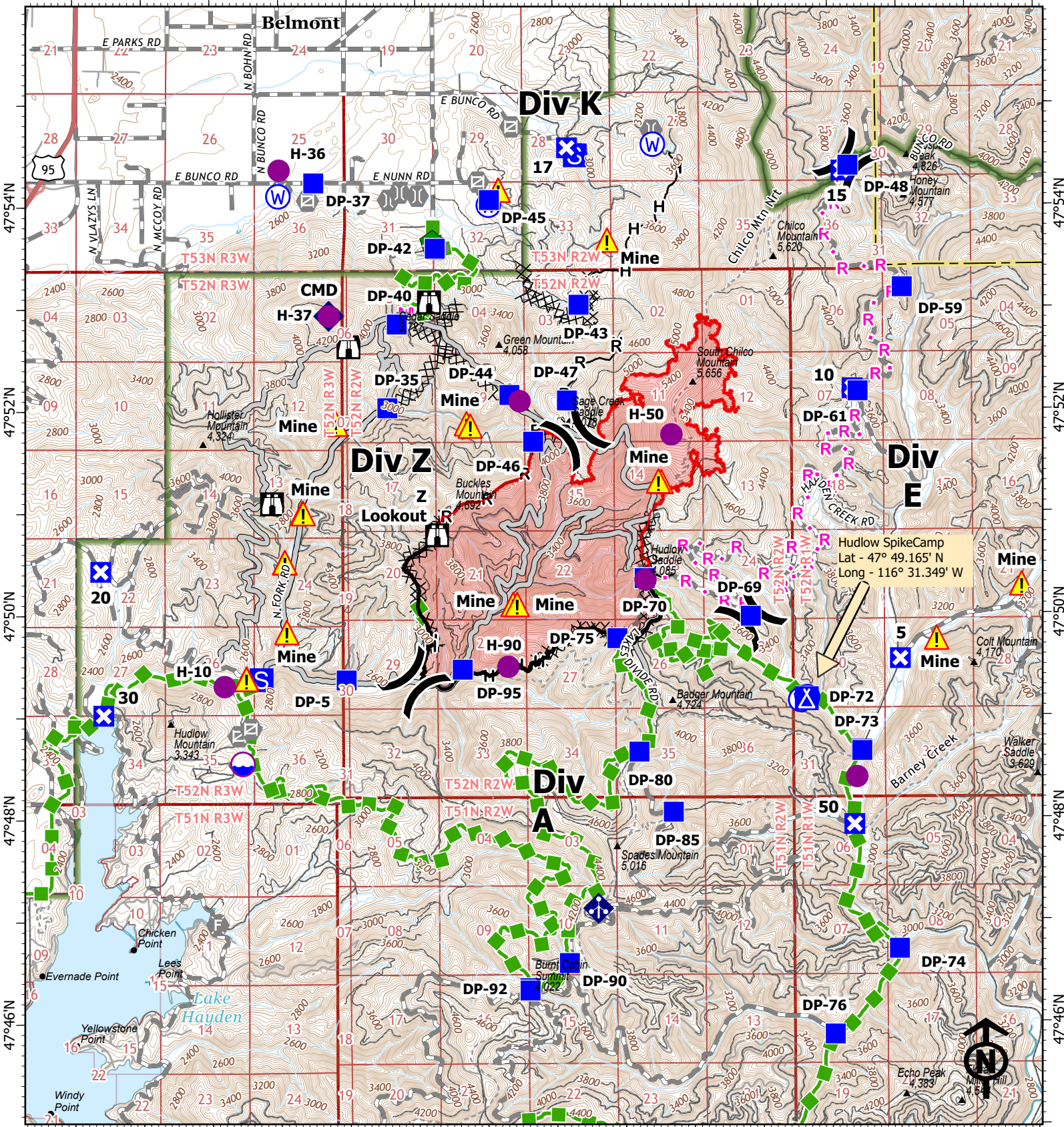


116°42'W 116°40'W 116°38'W 116°36'W 116°34'W 116°32'W 116°30'W 116°28'W



116°42'W 116°40'W 116°38'W 116°36'W 116°34'W 116°32'W 116°30'W 116°28'W

IAP
RIDGE CREEK
IDIPF000447
08/25/2023 Day
 4347 acres at 8/23/2023 2243 hrs
 Acres from IR

0 0.5 1 2 Miles

- () Division Break
- Dip Site
- Helispot
- Drop Point
- ⊗ Closure
- ⊠ Camp
- ⊡ Staging Area
- ⊞ Lookout
- ⊟ Value at Risk
- ⊞ Gate
- ⊞ Fire Station
- ⊞ Bridge
- ⊞ Water Development or Draft Site
- ⊞ Repair Point
- ⊞ Mobile Weather Unit
- ⊞ Repeater
- ⊞ Hazard
- ⊞ Water Source
- ⊞ Completed Dozer Line
- Completed Hand Line
- Completed Mixed Construction Line
- Completed Road as Line
- Planned Mixed Construction Line
- Planned Road as Line
- Access or Improved Road
- Escape Route
- Contained
- Uncontained
- Wildfire Daily Fire Perimeter

Date Exported: 8/24/2023 5:35 PM

