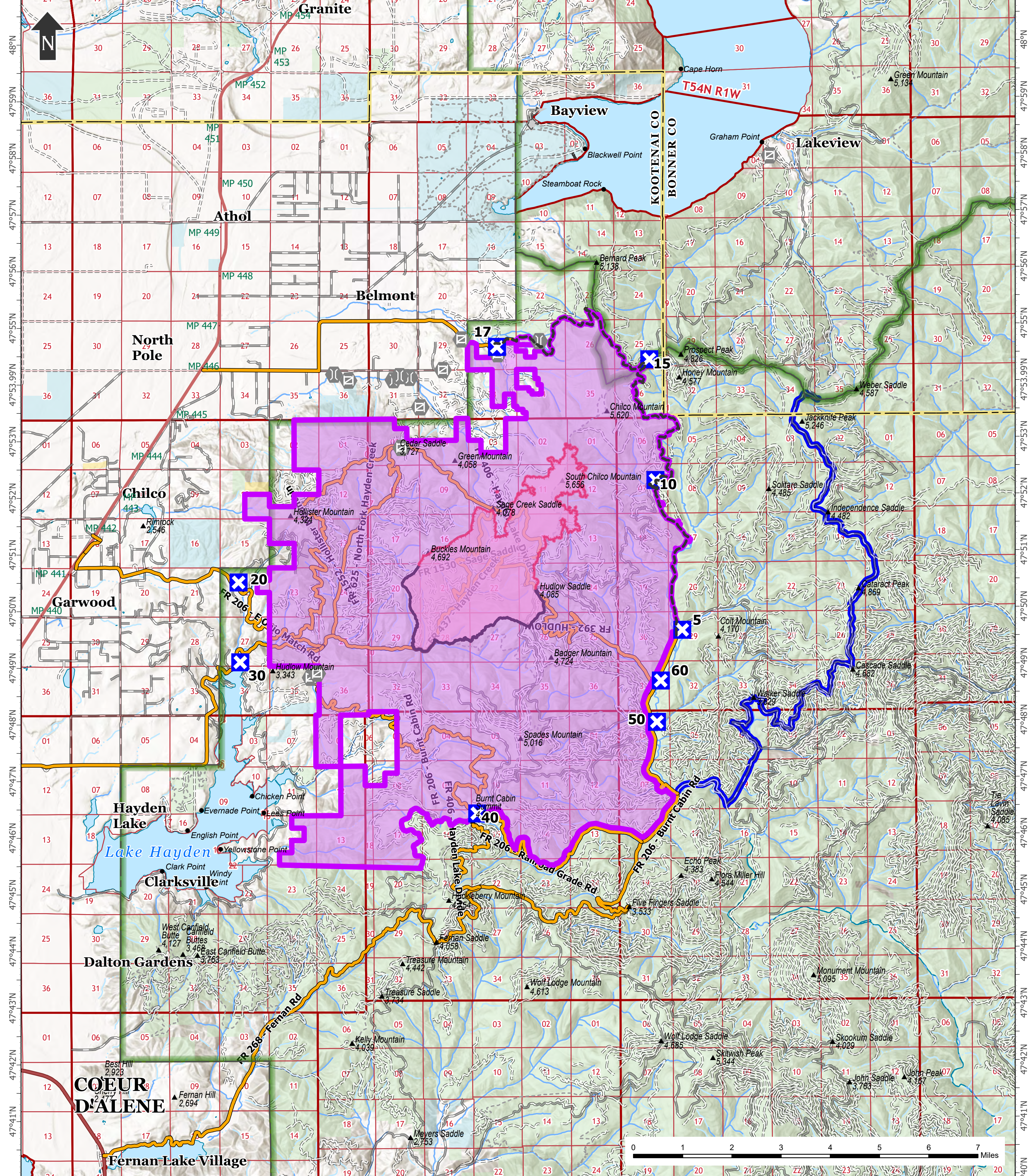


116°47'W 116°46'W 116°45'W 116°44'W 116°43'W 116°42'W 116°41'W 116°40'W 116°39'W 116°38'W 116°37'W 116°35'W 116°34'W 116°33'W 116°32'W 116°31'W 116°30'W 116°29'W 116°28'W 116°27'W 116°26'W 116°25'W 116°24'W 116°23'W 116°22'W



116°47'W 116°46'W 116°45'W 116°44'W 116°43'W 116°42'W 116°41'W 116°40'W 116°39'W 116°38'W 116°37'W 116°35'W 116°34'W 116°33'W 116°32'W 116°31'W 116°30'W 116°29'W 116°28'W 116°27'W 116°26'W 116°25'W 116°24'W 116°23'W 116°22'W

ROAD CLOSURE WITH DETOUR
 RIDGE CREEK
 ID-IPF-000447
 4347 acres
 Acres from IAA
 as of 8/23/2023 2243 hrs
 North American 1983 Datum. LatLong Grid

- | | | | |
|-------------------------------|-----------------------|--------------------|---------------------------------|
| Features | Transportation | Boundaries | Land Management |
| Wildfire Daily Fire Perimeter | Unimproved Road | State or Territory | Bureau of Land Management (BLM) |
| Contained | Improved Road | County | State |
| Uncontained | Main Access Roads | National Forest | US Forest Service (USFS) |
| Closure | Road Detour | Closure area | |
| Gate | Closed road | | |
| Bridge | | | |

