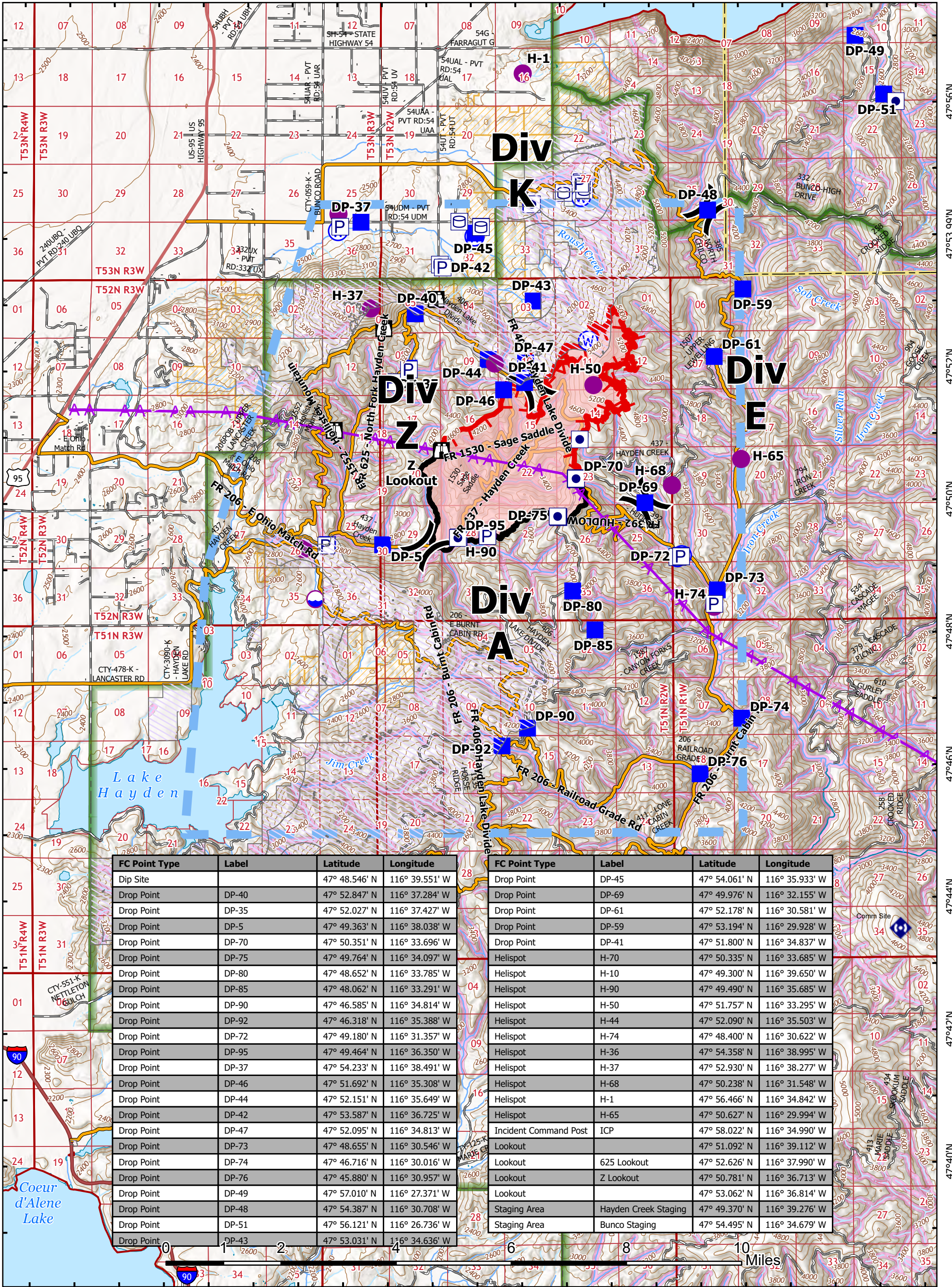


116°46'W 116°44'W 116°42'W 116°40'W 116°38'W 116°36.01'W 116°34'W 116°32'W 116°30'W 116°28'W 116°26'W



FC Point Type	Label	Latitude	Longitude
Dip Site		47° 48.546' N	116° 39.551' W
Drop Point	DP-40	47° 52.847' N	116° 37.284' W
Drop Point	DP-35	47° 52.027' N	116° 37.427' W
Drop Point	DP-5	47° 49.363' N	116° 38.038' W
Drop Point	DP-70	47° 50.351' N	116° 33.696' W
Drop Point	DP-75	47° 49.764' N	116° 34.097' W
Drop Point	DP-80	47° 48.652' N	116° 33.785' W
Drop Point	DP-85	47° 48.062' N	116° 33.291' W
Drop Point	DP-90	47° 46.585' N	116° 34.814' W
Drop Point	DP-92	47° 46.318' N	116° 35.388' W
Drop Point	DP-72	47° 49.180' N	116° 31.357' W
Drop Point	DP-95	47° 49.464' N	116° 36.350' W
Drop Point	DP-37	47° 54.233' N	116° 38.491' W
Drop Point	DP-46	47° 51.692' N	116° 35.308' W
Drop Point	DP-44	47° 52.151' N	116° 35.649' W
Drop Point	DP-42	47° 53.587' N	116° 36.725' W
Drop Point	DP-47	47° 52.095' N	116° 34.813' W
Drop Point	DP-73	47° 48.655' N	116° 30.546' W
Drop Point	DP-74	47° 46.716' N	116° 30.016' W
Drop Point	DP-76	47° 45.880' N	116° 30.957' W
Drop Point	DP-49	47° 57.010' N	116° 27.371' W
Drop Point	DP-48	47° 54.387' N	116° 30.708' W
Drop Point	DP-51	47° 56.121' N	116° 26.736' W
Drop Point	DP-43	47° 53.031' N	116° 34.636' W

FC Point Type	Label	Latitude	Longitude
Drop Point	DP-45	47° 54.061' N	116° 35.933' W
Drop Point	DP-69	47° 49.976' N	116° 32.155' W
Drop Point	DP-61	47° 52.178' N	116° 30.581' W
Drop Point	DP-59	47° 53.194' N	116° 29.928' W
Drop Point	DP-41	47° 51.800' N	116° 34.837' W
Helispot	H-70	47° 50.335' N	116° 33.685' W
Helispot	H-10	47° 49.300' N	116° 39.650' W
Helispot	H-90	47° 49.490' N	116° 35.685' W
Helispot	H-50	47° 51.757' N	116° 33.295' W
Helispot	H-44	47° 52.090' N	116° 35.503' W
Helispot	H-74	47° 48.400' N	116° 30.622' W
Helispot	H-36	47° 54.358' N	116° 38.995' W
Helispot	H-37	47° 52.930' N	116° 38.277' W
Helispot	H-68	47° 50.238' N	116° 31.548' W
Helispot	H-1	47° 56.466' N	116° 34.842' W
Helispot	H-65	47° 50.627' N	116° 29.994' W
Incident Command Post	ICP	47° 58.022' N	116° 34.990' W
Lookout		47° 51.092' N	116° 39.112' W
Lookout	625 Lookout	47° 52.626' N	116° 37.990' W
Lookout	Z Lookout	47° 50.781' N	116° 36.713' W
Lookout		47° 53.062' N	116° 36.814' W
Staging Area	Hayden Creek Staging	47° 49.370' N	116° 39.276' W
Staging Area	Bunco Staging	47° 54.495' N	116° 34.679' W

116°46'W 116°44'W 116°42'W 116°40'W 116°38'W 116°36.01'W 116°34'W 116°32'W 116°30'W 116°28'W 116°26'W

RIDGE CREEK
ID-IPF-000447
 4358 Acres
 8/25/2023 0050 hrs
 Acres from IR
 NAD 1983 LatLong Grid

Forest Service
 Drop Point
 Staging Area
 Lookout
 Value at Risk
 Water Source
 Aerial Hazard
 Temporary Flight Restriction
 Contained
 Uncontained
 Wildfire Daily Fire Perimeter
 Retardant Avoidance Area
 Terrestrial
 Aquatic
 Department of Defense
 State or Territory
 Main Access Roads
 Private Timber Lands
 IDL for USFS Offset Protection

