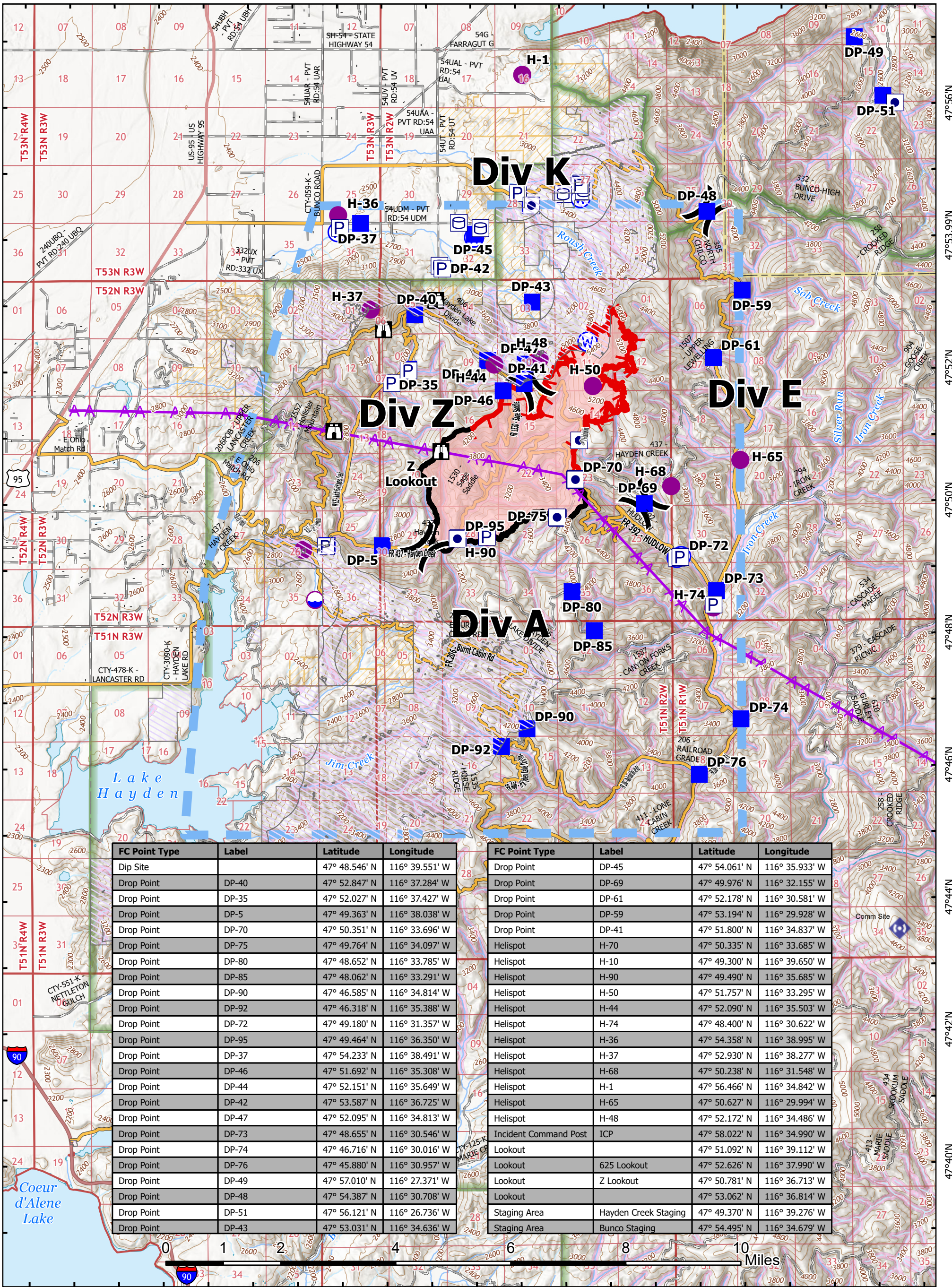


116°46'W 116°44'W 116°42'W 116°40'W 116°38'W 116°36.01'W 116°34'W 116°32'W 116°30'W 116°28'W 116°26'W



FC Point Type	Label	Latitude	Longitude
Dip Site		47° 48.546' N	116° 39.551' W
Drop Point	DP-40	47° 52.847' N	116° 37.284' W
Drop Point	DP-35	47° 52.027' N	116° 37.427' W
Drop Point	DP-5	47° 49.363' N	116° 38.038' W
Drop Point	DP-70	47° 50.351' N	116° 33.696' W
Drop Point	DP-75	47° 49.764' N	116° 34.097' W
Drop Point	DP-80	47° 48.652' N	116° 33.785' W
Drop Point	DP-85	47° 48.062' N	116° 33.291' W
Drop Point	DP-90	47° 46.585' N	116° 34.814' W
Drop Point	DP-92	47° 46.318' N	116° 35.388' W
Drop Point	DP-72	47° 49.180' N	116° 31.357' W
Drop Point	DP-95	47° 49.464' N	116° 36.350' W
Drop Point	DP-37	47° 54.233' N	116° 38.491' W
Drop Point	DP-46	47° 51.692' N	116° 35.308' W
Drop Point	DP-44	47° 52.151' N	116° 35.649' W
Drop Point	DP-42	47° 53.587' N	116° 36.725' W
Drop Point	DP-47	47° 52.095' N	116° 34.813' W
Drop Point	DP-73	47° 48.655' N	116° 30.546' W
Drop Point	DP-74	47° 46.716' N	116° 30.016' W
Drop Point	DP-76	47° 45.880' N	116° 30.957' W
Drop Point	DP-49	47° 57.010' N	116° 27.371' W
Drop Point	DP-48	47° 54.387' N	116° 30.708' W
Drop Point	DP-51	47° 56.121' N	116° 26.736' W
Drop Point	DP-43	47° 53.031' N	116° 34.636' W

FC Point Type	Label	Latitude	Longitude
Drop Point	DP-45	47° 54.061' N	116° 35.933' W
Drop Point	DP-69	47° 49.976' N	116° 32.155' W
Drop Point	DP-61	47° 52.178' N	116° 30.581' W
Drop Point	DP-59	47° 53.194' N	116° 29.928' W
Drop Point	DP-41	47° 51.800' N	116° 34.837' W
Helispot	H-70	47° 50.335' N	116° 33.685' W
Helispot	H-10	47° 49.300' N	116° 39.650' W
Helispot	H-90	47° 49.490' N	116° 35.685' W
Helispot	H-50	47° 51.757' N	116° 33.295' W
Helispot	H-44	47° 52.090' N	116° 35.503' W
Helispot	H-74	47° 48.400' N	116° 30.622' W
Helispot	H-36	47° 54.358' N	116° 38.995' W
Helispot	H-37	47° 52.930' N	116° 38.277' W
Helispot	H-68	47° 50.238' N	116° 31.548' W
Helispot	H-1	47° 56.466' N	116° 34.842' W
Helispot	H-65	47° 50.627' N	116° 29.994' W
Helispot	H-48	47° 52.172' N	116° 34.486' W
Incident Command Post	ICP	47° 58.022' N	116° 34.990' W
Lookout		47° 51.092' N	116° 39.112' W
Lookout	625 Lookout	47° 52.626' N	116° 37.990' W
Lookout	Z Lookout	47° 50.781' N	116° 36.713' W
Lookout		47° 53.062' N	116° 36.814' W
Staging Area	Hayden Creek Staging	47° 49.370' N	116° 39.276' W
Staging Area	Bunco Staging	47° 54.495' N	116° 34.679' W



116°46'W 116°44'W 116°42'W 116°40'W 116°38'W 116°36.01'W 116°34'W 116°32'W 116°30'W 116°28'W 116°26'W

**RIDGE CREEK**  
**ID-IPF-000447**  
 4359 Acres  
 8/26/2023 0415 hrs  
 Acres from IR  
 NAD 1983 LatLong Grid

- Forest Service
- Drop Point
- Aerial Hazard
- Retardant Avoidance Area
- Main Access Roads
- Dip Site
- Staging Area
- Temporary Flight Restriction
- Terrestrial
- Private Timber Lands
- Helispot
- Lookout
- Contained
- Aquatic
- IDL for USFS Offset Protection
- Value at Risk
- Uncontained
- Department of Defense
- Water Source
- Wildfire Daily Fire Perimeter
- State or Territory