

Ridge Creek

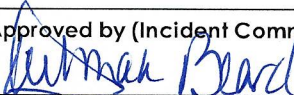
Incident Action Plan



Operational Period
Monday, August 28, 2023
0600-2200

ID-IPF-000447
P1QG9D (0104)



INCIDENT OBJECTIVES	1. Incident Name Ridge Creek Fire	2. Date 8/27/23	3. Time 2000
4. Operational Period: 8/28/2023 0600 to 8/28/2023 2200			
<p>5. General Control Objectives for the Incident</p> <ul style="list-style-type: none"> • Protection of human life is the highest priority. Utilize a deliberative risk management process when mitigating risk to the public and incident resources. Implement actions where there is a high probability of success. • Keep Fire within current planning area with actions based on prioritized Values at Risk. <ul style="list-style-type: none"> Prioritized values are: <ul style="list-style-type: none"> ○ Private property and residences ○ Hayden Creek and Hayden Lake Water Quality ○ Industrial timber lands, plantations, and Bottom Canyon Timber Sales (Idaho Forest Group) and other planned timber sales ○ Bonneville Power Administration Transmission Line ○ Hudlow Warming Hut ○ Chilco Mountain National Recreation Trail • Protect infrastructure, private residences, private inholdings, and businesses within and near the planning area from negative impacts by fire and mitigate smoke impacts when possible. • Coordinate and communicate with all partners, cooperators, stakeholders and forest visitors as appropriate and as needed. Provide accurate and timely information as well as build and maintain the ongoing high trust environment. • Minimize fire and suppression impacts to timber values on private industrial timber lands and National Forest System lands. • Minimize potential fire impacts to critical community infrastructure and follow established management action points / requirements found in the Ridge Creek WFDSS decision. 			
7. Attachments (mark if attached)			
<input checked="" type="checkbox"/> Organization List - ICS 203	<input checked="" type="checkbox"/> Weather Forecast	<input checked="" type="checkbox"/> Messages Safety, Finance	
<input checked="" type="checkbox"/> Div. Assignment Lists - ICS 204	<input checked="" type="checkbox"/> Fire Behavior Forecast	<input checked="" type="checkbox"/> Messages Logs/Plans	
<input checked="" type="checkbox"/> Communications Plan - ICS 205	<input checked="" type="checkbox"/> Incident Map	<input checked="" type="checkbox"/> Messages HR, Training	
<input checked="" type="checkbox"/> Medical Plan - ICS 206	<input checked="" type="checkbox"/> Air Operations- ICS 220	<input checked="" type="checkbox"/> 205a, 206a, 214	
9. Prepared by (Planning Section Chief) Jessica Hollingsworth - RESL		9. Approved by (Incident Commander) 	

ORGANIZATION ASSIGNMENT LIST (ICS 203)

1. Incident Name: Ridge Creek		2. Operational Period Date From: 08/28/23 Date To: 8/28/23		
		Time From: 0600 Time To: 2200		
3. Incident Commander(s) and Command Staff:		7. Operations Section:		
IC/UC's	Deborah Beard	Lead Ops	Jeff Schardt	
Deputy	Marshall Bentley	Field Ops	Matt Johnson; Jason Klawinsky (T)	
Safety Officer	Buddy Kelley; Larry Holsomback; Paul Churchill; Danny Gore (T)	Planning Ops	Shawn Nagle; Kris Wilson (T)	
Public Info. Officer	Michelle Burnett (V); Lee Williams (V)	Branch Director	Brian Elam	
Liaison Officer	Michael Wright; Jeremy Edwardson (T)	DIVISIONS		
4. Agency/Organization Representatives:		Division/Group	A/E	Greg Salansky; Jordan Collier (T)
Agency/Organization	Name	Division/Group	A/E	
USFS	Randy Swick; Holly Hampton (T)	Division/Group	K	David Gregory
IDL	Andrew Smyth; Erik Sjoquist	Division/Group	Z	Heath Thomas; Jeremy Joseph (T)
Resource Advisors	Will Young	Division/Group	Structure	Jared Nobles; Todd Bennett (T)
5. Planning Section:		Division/Group	IA	Samuel Daugherty
Chief	Carol O'Bryan; Kevin Curry(T)			
Deputy	Thomas Barrett	Air Operations Branch		
Resources Unit	Melonie Sellers; Ethan Robertson; Jessica Hollingsworth (V)	Air Ops Branch Dir	Tim Elder	
Status Check-In	Laura Vann	Air Support Supervisor	Nickolas Holschbach; Tim Lanterman (T)	
Situation Unit	Clint Roberts; Eric Pullium (T)	6. Logistics Section:		
Demobilization Unit	Jeff DeMatteis; Wendy Christopher	Chief	Steve Weherley; Tim Exline (T); Todd Waller (T)	
Documentation Unit	Lisa Spiess (T) (V)	Deputy	David McVay	
Technical Specialists	John Edwards; Yasmir Diaz-Rohweder (T); Bridgette Webb (T)	Communications Unit	David Radzivill; Paul Noa	
GIS Specialist	Katherine Bronson; Adam Riley; Hester Mallonee (T); Kayla Parr (T)	Medical Unit	Bart Walker; Kurt Gainer; Curtis Orde	
Incident Meteorologist	Ryan Fliehman; Krista Carrothers (T)	Food Unit	James Lowe; Dan Baker (T)	
Fire Behavior Analyst	Kelly Cagle	Facilities Unit	Lester Kaiser; Mark Thornton (T)	
Training Specialist	Al Hoke (V); Lucas Hunkler (T) (V)	Base Camp Mgr	Kathleen Paiva (T)	
8. Finance/Administration Section:		Ground Support Unit	Brian Truss (T)	
Chief	Jason Gillis; Marlene Hudson (T)	Equipment Managers	Doug Stover (T)	
Deputy	Reggie Lanier Jr	Supply Unit	Sandra Rhodes	
Time Unit	Donna Bentley (V); Libby Bagwell; Brandon Brown (T)	Ordering Manager	Sherri Kite	
Procurement Unit		Receiving/Distribution	Justin Medley; Randall Hamilton (T)	
Comp/Claims Unit	Terri McDonald (V)	Security Manager	David Clark; Christopher Cooley	
Cost Unit	Stacey Eaton; Tom Steele	Hudlow Logistics		
		Base Camp Mgr	David Brooks; Tim Crowell (T)	
		Ground Support Unit	Angela Parrish	
		Equipment Managers	Dwight Henry (T)	
9. Prepared by: Name: <u>Jessica Hollingsworth</u>		Position/Title: RESL	Signature:	<i>Jessica Hollingsworth</i>
ICS 203 IAP Page (V) - Virtual		Date/Time: 08/27/23 2030hrs		



Incident Weather Forecast



FORECAST NO: 19

SHIFT DATE: Monday 8/28/2023

UNIT: ID Panhandle NF

NAME OF FIRE: Ridge Creek

SIGNED: /s/ Ryan Fliehman/Krista Carrothers IMET/IMET(t)

ryan.fliehman@noaa.gov / (240) 205-6805

WEATHER DISCUSSION: Today brings the hottest and driest day of the string with temps at or above 90 for most elevations. Humidity will also dip into the teens. The limiting factor for a critical day will be the lack of wind as we only expect lighter winds. Humidity recovery overnight will continue to diminish leading to poor values for tonight. Tuesday is the transition day with mostly sunny skies in the morning giving way to showers and storms by the afternoon. Cool, damp and breezy conditions are expected for Wednesday before they moderate for the tail end of the week.

WEATHER FORECAST: Hot and Dry under sunny skies. Hottest day of the week.

	Ridge Creek Fire	Farragut ICP (2,400ft)
TEMPERATURES (Trend):	86-91° (+2)	91-96° (+2)
HUMIDITY (Trend):	14-19% (-2%)	13-18% (-2%)
20 FT WINDS: RIDGETOP	Light northeast winds early, increasing to 5-9 gust 14 after 1200	
SLOPE/VALLEY	Upslope/upvalley 4-8 mph, gusts to 12 mph after 1000.	Light winds early, increasing to NE 4-8 gusts to 12 mph after 1100. Decreasing after 1900.
MIXING HEIGHT:	8,000 feet AGL	8,000 feet AGL
STABILITY/INVERSION:	Inversion lifting around 1000 hrs	Inversion lifting around 1000 hrs
HAINES INDEX (high)	4 – (Stability 2, Moisture 2)	4 – (Stability 2, Moisture 2)
CHANCE OF RAIN:	0	0
LIGHTNING (LAL):	1	1
RH RECOVERY TONIGHT:	30-40% (Poor)	60-70% (Good)
OVERNIGHT WINDS:	Downslope/downvalley 1-3 mph/ Light northeast winds on the ridges	

Trend based on yesterday's observed values.

TUESDAY OUTLOOK: Transition day for the incident as we move from hot and dry, to showers and storms and finally cool, breezy and rain. A lot to digest in a day I know. Abundant sun and light winds are expected in the morning before clouds move in midday and showers and storms arrive by the afternoon. Some of these storms could bring severe characteristics with gusty winds, lightning, periods of heavy rain and small hail all on the table. Behind the storms will likely be a period of more steady rain and cooling temperatures. Breezy winds are expected with any storms and will persist into Wednesday.

EXTENDED FORECAST: Wednesday will be cooler and breezy with rain tapering off throughout the day. Temperatures will increase slightly each day through the end of the week with light winds and no additional precipitation expected. As of now, we are not seeing any indicators of temperatures rising or humidity dropping to current levels.

EXTRA INFORMATION: Coeur d'Alene (2,320ft): High temp: 93°. Low RH: 16%.
Spades IRAWS (4,678ft): High temp: 88°. Low RH: 17%.
MaGee Peak RAWs (4,720ft): High temp: 81°. Low RH: 19%.

Please send us your observations! Text photos or obs to the phone number above.

FIRE BEHAVIOR FORECAST

FORECAST NUMBER: #19	TYPE OF FIRE: Wildland
FIRE NAME: Ridge Creek	OPERATIONAL PERIOD: 8/28/23 Day Shift
DATE ISSUED: 08/27/23	TIME ISSUED: 2000
UNIT: Idaho Panhandle NF	WRITTEN: Kelly Cagle - FBAN

FUELS: The major fuel type found on the Ridge Creek fire is mixed conifer (fuel models 10/TU1/TU5). There are areas of open canopy conifer with grass and shrub understory on the south and west facing slopes, and there also areas of closed canopy conifer – mostly on the north and east facing slopes. Additionally – areas of subalpine fire are present in the higher elevations. Live fuels have not been a huge driver of fire spread thus far – in fact – they are a bit of a deterrent on north and east facing slopes.

WEATHER SUMMARY: Fire weather is in place over the fire today. Poor recovery last night coupled with hot temperatures and low RH's will provide for an enhanced fire environment today. Fortunately, winds are expected to be very light. See fire weather forecast for more specifics.

General Fire Behavior Forecast: Hot weather and low humidities will create fire prone conditions today. Fine fuel moistures will be very low and fuels are expected to be more receptive to embers and to fire spread than recent days. Smoldering and creeping fire behavior is expected today. Moderate intensity fire spread could occur late day. Isolated torching – single or group- is possible. Small scale, short runs are possible if fuel and slope align. Any torching near a containment line could cause control issues today.

Critical fire behavior thresholds for Idaho Panhandle NF:
RH below 20% Winds greater than 20 Daytime temp > 80 Haines 5 or 6

Specific:

Division Echo – Smoldering and creeping fire behavior is likely today. Active fire spread possible. Isolated torching probable. Models suggest fire could back down the east facing slope and cross the drainage bottom. If so, slope reversal would then be likely.

Division Kilo – Smoldering and creeping fire behavior is probable -especially in the “horseshoe” area. Active flame and spread are possible. Isolated torching possible. If fuel and slope align at the bottom of the “horseshoe” drainage, fire could make a push uphill today.

Division Alpha – Expect smoldering and creeping inside containment line and the potential for single and group torching.

Division Zulu – Smoldering and creeping will continue, especially near the Kilo break. Light smoke production will likely remain visible. There is at least the potential for open flame/active spread today particularly in and on the flanks of the horseshoe. Small scale uphill run would be possible today.

Initial Attack – Increased risk of initial attack today due to very low fuel moistures. Fires that originate in lower elevations on south and west slopes could organize quickly and begin to move with elevated intensity today -especially during mid-afternoon.

Fine fuel moisture today is -	6 shaded/3 Unshaded	Rates of Spread in Timber- 2-6 chains/hour
Probability of Ignition today -	56% shaded/86% unshaded	Rates of Spread in Grass- 15 chains/hour
Max Spotting Distance Today-	< 300 feet	Flame Lengths- 3 to 7 feet as an average

AIR OPERATIONS : Light inversion expected early morning. Should break early and clear skies will be in place for the remainder of the day. Winds will be light and conducive to aviation operations.

FIRE BEHAVIOR SAFETY: Today is a day with increased fire potential. Ponder attack options and *thoroughly assess any direct attack at the head of a fire.*

DIVISION ASSIGNMENT LIST			1. Branch		2. Division Div-A/E (Page 1 of 3)	
3. Incident Name RIDGE CREEK			Operational Period from: 08/28/2023 0600 To: 08/28/2023 2200			
5. Operations Personnel						
Field Operations Section Chief		Matt Johnson Jason Klawinsky(T)		Branch Director		Brian Elam
Planning Operations Section Chief		Jeff Schardt Shawn Nagle Kris Wilson (T)		Division Supervisor		Greg Salansky 865-414-6461 Jordon Collier (T) 912-464-9453
6. Resources Assigned this Period						
RO#	Strike Team/Task Force/ Resource Designator	Leader	# People	LWD	Drop Off PT./Time	Pick Up PT./Time
C-31	CRW2 Dust Busters Crew 12	Lugo	20	8/31	Hudlow/0600	Hudlow/2200
C-32	CRW2 T2C316 DUST BUSTERS CREW-13	Hubbard	20	9/1	Hudlow/0600	Hudlow/2200
C-34	CRW2 Blue Mountain C-2	Moreno-Esoinoza	20	9/3	Hudlow/0600	Hudlow/2200
C-25	CR21 Standing Rock	Hodgkiss	20	8/28	Hudlow/0600	Hudlow/2200
O-94	FMOD Westwood	Arvish	2	8/31	Hudlow/0600	Hudlow/2200
Local	ENG6 Ocala 17	O'Brien	5	9/10	Hudlow/0600	Hudlow/2200
E-217	ENG6 Firebrand Forestry	Douglas	3	9/6	Hudlow/0600	Hudlow/2200
E-218	ENG6 Cahoon Contracting LLC	Peterson	3	9/6	Hudlow/0600	Hudlow/2200
E-72	MBM1 Fousts C81065	Dean	1	9/3	Hudlow/0600	Hudlow/2200
E-204	MBM2 JG Enterprise INC-210091	Cahoon	2	9/4	Hudlow/0600	Hudlow/2200
E-205	MBM2 Anthony Hulett	Hulett	2	9/5	Hudlow/0600	Hudlow/2200
E-31	DZR2 Patrick Madden	Foster	3	9/5	Hudlow /0600	Hudlow/2200
E-133	DZR2 Chad Howell	Coleman	2	9/5	Hudlow/0600	Hudlow/2200
E-79	EXC2 J&P Idaho Services	Kitchen	2	9/3	Hudlow/0600	Hudlow/2200
7. Control Operations: Task - Utilize full range of suppression tactics to construct, improve and hold manmade, natural features, and established fire lines for containment within DIV A/E. Purpose - To prevent fire spread east of River road and established containment lines, within DIV A/E. End State - Fire spread remains within established containment lines, preventing fire spread east of FSR 209, south of FSR 406, and minimizing impacts to the Little North River Corridor.						
8. Special Instructions: Continue to construct, secure, mop-up, monitor fire lines within DIV A/E. Utilize field maps to drop points, safety zones, and potential helispots. Ensure that communications are functional throughout the entire division. Maintain situational awareness around heavy equipment operations. Inventory all pumping operations supplies. Ensure all fire lines have established water-bars.						
9. Division/Group Communication Summary						
Communications Summary						
Channel	Function	RX Frequency	RX Tone	TX Frequency	TX Tone	
1 TAC 1	TAC	168.0500 N	110.9	168.0500 N	110.9	
5 TAC 5	TAC	166.7750 N	110.9	166.7750 N	110.9	
7 MT MONUMENT	CMD	170.0125 N	110.9	165.2500 N	110.9	
8 CEDAR	CMD	170.9750 N	110.9	168.7000 N	110.9	
13 A/G PRI	A/G	167.1250 N	NONE	167.1250 N	NONE	
14 A/G SEC	A/G	166.6125 N	NONE	166.6125 N	NONE	
16 AIRGUARD	AIRGUARD	168.6250 N	NONE	168.6250 N	110.9	
Prepared by (Resource Unit Ldr) Melonie Sellers				Date 08/27/2023	Time 2030	

DIVISION ASSIGNMENT LIST			1. Branch		2. Division DIV- A/E (Page 2 of 3)	
3. Incident Name RIDGE CREEK			4. Operational Period From: 08/28/2023 0600 To: 8/28/2023 2200			
5. Operations Personnel						
Field Operations Section Chief		Matt Johnson Jason Klawinsky (T)		Branch Director		Brian Elam
Planning Operations Section Chief		Jeff Schardt Shawn Nagle Kris Wilson (T)		Division Supervisor		Greg Salansky 865-414-6461 Jordon Collier (T) 912-464-9453
RO#	Strike Team/Task Force/ Resource Designator	Leader	# People	LWD	Drop Off PT./Time	Pick Up PT./Time
E-8	EXC2 Fousts INC-35616	Gatchell	1	8/27	Hudlow/0600	Hudlow/2200
E-32	EXC2 Altered Aspects LLC	Hess	2	9/6	Hudlow/0600	Hudlow/2200
E-4	WTS2 Craig Martin 492771	Martin	1	9/3	Hudlow/0600	Hudlow/2200
E-131	WTS2 Teresas H2O TO Go LLC-A30824	Moss	1	9/3	Hudlow/0600	Hudlow/2200
E-132	WTT2 Tri-State	Cruz	2	8/30	Hudlow/0600	Hudlow/2200
O-212.68	TFLD	Holsomback	1	9/4	Hudlow/0600	Hudlow/2200
O-258	TFLD	Allen	1	8/28	Hudlow/0600	Hudlow/2200
O-198	TFLD	Krzens	1	9/6	Hudlow/0600	Hudlow/2200
O-231	TFLD (T)	Fuentes	1	9/6	Hudlow/0600	Hudlow/2200
O-212.21	SOF2 (T)	Gray	1	9/3	Hudlow/0600	Hudlow/2200
O-139	SOFR	Chris O'Brien	1	8/28	Hudlow/0600	Hudlow/2200
O-232	SOFR	Foco	1	9/4	Hudlow/0600	Hudlow/2200
7. Control Operations: Task - Utilize full range of suppression tactics to construct, improve and hold manmade, natural features, and established fire lines for containment within DIV A/E. Purpose - To prevent fire spread east of River road and established containment lines, within DIV A/E. End State - Fire spread remains within established containment lines, preventing fire spread east of FSR 209, south of FSR 406, and minimizing impacts to the Little North River Corridor.						
8. Special Instructions: Continue to construct, secure, mop-up, monitor fire lines within DIV A/E. Utilize field maps to drop points, safety zones, and potential helispots. Ensure that communications are functional throughout the entire division. Maintain situational awareness around heavy equipment operations. Inventory all pumping operations supplies. Ensure all fire lines have established water-bars.						
9. Division/Group Communication Summary						
Communications Summary						
Channel	Function	RX Frequency	RX Tone	TX Frequency	TX Tone	
1 TAC 1	TAC	168.0500 N	110.9	168.0500 N	110.9	
5 TAC 5	TAC	166.7750 N	110.9	166.7750 N	110.9	
7 MT MONUMENT	CMD	170.0125 N	110.9	165.2500 N	110.9	
8 CEDAR	CMD	170.9750 N	110.9	168.7000 N	110.9	
13 A/G PRI	A/G	167.1250 N	NONE	167.1250 N	NONE	
14 A/G SEC	A/G	166.6125 N	NONE	166.6125 N	NONE	
16 AIRGUARD	AIRGUARD	168.6250 N	NONE	168.6250 N	110.9	
Prepared by (Resource Unit Ldr) Melonie Sellers				Date 08/27/2023	Time 2030	

DIVISION ASSIGNMENT LIST			1. Branch		2. Division DIV- A/E (Page 3 of 3)	
3. Incident Name RIDGE CREEK			4. Operational Period From: 08/28/2023 0600 To: 8/28/2023 2200			
5. Operations Personnel						
Field Operations Section Chief		Matt Johnson Jason Klawinsky (T)		Branch Director		Brian Elam
Planning Operations Section Chief		Jeff Schardt Shawn Nagle Kris Wilson (T)		Division Supervisor		Greg Salansky 865-414-6461 Jordon Collier (T) 912-464-9453
RO#	Strike Team/Task Force/ Resource Designator	Leader	# People	LWD	Drop Off PT./Time	Pick Up PT./Time
O-244	REMS Ranger MT Rescue	Lahti	4	9/6	Hudlow/0600	Hudlow/2200
O-221	EMPF	Ratti	1	9/4	Hudlow/0600	Hudlow/2200
O-224	EMTF	Roy	1	9/6	Hudlow/0600	Hudlow/2200
O-171	EMPF Blacklands EMS Inc.	Keys	1	8/29	Hudlow/0600	Hudlow/2200
E-122	AMB1 ALS-ID881N Idaho Falls FD # 847	Wood	2	9/9	Hudlow/0600	Hudlow/2200
7. Control Operations: Task - Utilize full range of suppression tactics to construct, improve and hold manmade, natural features, and established fire lines for containment within DIV A/E. Purpose - To prevent fire spread east of River road and established containment lines, within DIV A/E. End State - Fire spread remains within established containment lines, preventing fire spread east of FSR 209, south of FSR 406, and minimizing impacts to the Little North River Corridor.						
8. Special Instructions: Continue to construct, secure, mop-up, monitor fire lines within DIV A/E. Utilize field maps to drop points, safety zones, and potential helispots. Ensure that communications are functional throughout the entire division. Maintain situational awareness around heavy equipment operations. Inventory all pumping operations supplies. Ensure all fire lines have established water-bars.						
9. Division/Group Communication Summary						
Communications Summary						
Channel	Function	RX Frequency	RX Tone	TX Frequency	TX Tone	
1 TAC 1	TAC	168.0500N	110.9	168.0500N	110.9	
5 TAC 5	TAC	166.7750 N	110.9	166.7750 N	110.9	
7 MT MONUMENT	CMD	170.0125 N	110.9	165.2500 N	110.9	
8 CEDAR	CMD	170.9750 N	110.9	168.7000 N	110.9	
13 A/G PRI	A/G	167.1250 N	NONE	167.1250 N	NONE	
14 A/G SEC	A/G	166.6125 N	NONE	166.6125 N	NONE	
16 AIRGUARD	AIRGUARD	168.6250 N	NONE	168.6250 N	110.9	
Prepared by (Resource Unit Ldr) Melonie Sellers				Date 08/27/2023	Time 2030	

DIVISION ASSIGNMENT LIST			1. Branch		2. Division DIV- K (Page 1 of 2)	
3. Incident Name RIDGE CREEK			4. Operational Period From: 08/28/2023 0600 To: 8/28/2023 2200			
5. Operations Personnel						
Field Operations Section Chief		Matt Johnson Jason Klawinsky (T)		Branch Director		
Planning Operations Section Chief		Jeff Schardt Shawn Nagle Kris Wilson (T)		Division Supervisor		David Gregory 208-784-3711
6. Resources Assigned this Period						
RO#	Strike Team/Task Force/ Resource Designator	Leader	# People	LWD	Drop Off PT./Time	Pick Up PT./Time
Surge	Bitter Root IHC Local Surge			8/29	ICP/0600	ICP/2200
C-35	CRW2 Franco C25	Pacheco	20	9/04	ICP/0600	ICP/2200
C-36	Type 2 IA MOCC Interagency Crew 4	Hedges	19	9/08	ICP/0600	ICP/2200
C-22	CRW2 Iron Mountain	Zavala	20	8/28	ICP/0600	ICP/2200
O-13	FMOD Bailey Fallers	Newman	2	9/4	ICP/0600	ICP/2200
O-93	FMOD CZ Contracting	Babin	2	9/3	ICP/0600	ICP/2200
E-160	ENG6 C2M2	Hauge	3	8/29	ICP/0600	ICP/2200
E-2	EXC2 Fousts Inc. 35653	Kramer	1	9/1	ICP/0600	ICP/2200
E-124	MBM2 West Wood	West	1	8/27	ICP/0600	ICP/2200
E-214	CHP2 The American Firefighter Co	Gwin	3	9/6	ICP/0600	ICP/2200
7. Control Operations: Task - Utilize full range of suppression tactics to construct fireline, improve roads, handlines, and natural features for use as control lines. Purpose - To prevent fire spread to the west and north of Bunco Road and limit fire impacts to the Sage Creek Area and private and Forest Service Boundaries End State- Limited fire impacts to private and industry timber lands.						
8. Special Instructions: Continue Prep along Bunko Road, improve handline, and continue to assess opportunities to change tactics when necessary. Utilize field maps for drop points, safety zones, and potential helispots. Ensure that communications are functional throughout the entire division. Ensure all fire lines have established water-bars.						
9. Division/Group Communication Summary						
Communications Summary						
Channel	Function	RX Frequency	RX Tone	TX Frequency	TX Tone	
2 TAC 2	TAC	168.2000 N	110.9	168.2000 N	110.9	
7 MT MONUMENT	CMD	170.0125 N	110.9	165.2500 N	110.9	
8 CEDAR	CMD	170.9750 N	110.9	168.7000 N	110.9	
13 A/G PRI	A/G	167.1250 N	NONE	167.1250 N	NONE	
14 A/G SEC	A/G	166.6125 N	NONE	166.6125 N	NONE	
16 AIRGUARD	AIRGUARD	168.6250 N	NONE	168.6250 N	110.9	
Prepared by (Resource Unit Ldr) Jessica Hollingsworth				Date 08/27/2023	Time 2030	

DIVISION ASSIGNMENT LIST			1. Branch		2. Division Div-K (Page 2 of 2)	
3. Incident Name RIDGE CREEK			4. Operational Period From: 08/28/2023 0600 To: 8/28/2023 2200			
5. Operations Personnel						
Field Operations Section Chief		Matt Johnson Jason Klawinsky (T)		Branch Director		
Planning Operations Section Chief		Jeff Schardt Shawn Nagle Kris Wilson (T)		Division Supervisor		David Gregory 208-784-3711
6. Resources Assigned this Period						
RO#	Strike Team/Task Force/ Resource Designator	Leader	# People	LWD	Drop Off PT./Time	Pick Up PT./Time
E-3	WTS2 St Florian	Phillips	1	9/2	ICP/0600	ICP/2200
E-185	WTT2 ID1TPN Teton County FPD #411 13692	Plennes	2	8/31	ICP/0600	ICP/2200
E-203	WTS2 King Fire LLC	King	1	9/7	ICP/0600	ICP/2200
O-200	TFLD	Doyle	1	9/1	ICP/0600	ICP/2200
O-197	TFLD (T)	Cobb	1	8/30	ICP/0600	ICP/2200
O-277	SOF2	McRae	1	9/10	ICP/0600	ICP/2200
O-195	SOFR (T)	Gregory	1	8/30	ICP/0600	ICP/2200
O-172	EMPF North Forks Medics	Wallace	1	8/29	ICP/0600	ICP/2200
O-174	EMPF Minuteman EMS	Kemmerer	1	8/29	ICP/0600	ICP/2200
O-265	EMPF	Cisneros-Thorsvold	1	9/8	ICP/0600	ICP/2200
7. Control Operations: Task - Utilize full range of suppression tactics to construct fireline, improve roads, handlines, and natural features for use as control lines. Purpose - To prevent fire spread to the west and north of Bunco Road and limit fire impacts to the Sage Creek Area and private and Forest Service Boundaries End State- Limited fire impacts to private and industry timber lands.						
8. Special Instructions: Continue Prep along Bunko Road, improve handline, and continue to assess opportunities to change tactics when necessary. Utilize field maps for drop points, safety zones, and potential helispots. Ensure that communications are functional throughout the entire division. Ensure all fire lines have established water-bars.						
9. Division/Group Communication Summary						
Communications Summary						
Channel	Function	RX Frequency	RX Tone	TX Frequency	TX Tone	
2 TAC 2	TAC	168.2000 N	110.9	168.2000 N	110.9	
7 MT MONUMENT	CMD	170.0125 N	110.9	165.2500 N	110.9	
8 CEDAR	CMD	170.9750 N	110.9	168.7000 N	110.9	
13 A/G PRI	A/G	167.1250 N	NONE	167.1250 N	NONE	
14 A/G SEC	A/G	166.6125 N	NONE	166.6125 N	NONE	
16 AIRGUARD	AIRGUARD	168.6250 N	NONE	168.6250 N	110.9	
Prepared by (Resource Unit Ldr) Jessica Hollingsworth				Date 08/27/2023	Time 2030	

DIVISION ASSIGNMENT LIST			1. Branch		2. Division	
3. Incident Name RIDGE CREEK			4. Operational Period From: 08/28/2023 0600 To: 8/28/2023 2200			
5. Operations Personnel						
Field Operations Section Chief		Matt Johnson Jason Klawinsky (T)		Branch Director		
Planning Operations Section Chief		Jeff Schardt Shawn Nagle Kris Wilson (T)		Division Supervisor		Heath Thomas 501-208-7077 Jeremy Joseph 586-489-6967
6. Resources Assigned this Period						
RO#	Strike Team/Task Force/ Resource Designator	Leader	# People	LWD	Drop Off PT./Time	Pick Up PT./Time
C-23	CRW2 PR Reforestation	Pantaleon	20	8/29	ICP/0600	ICP/2200
C-30	CRW2 Dust Busters Crew 10	Fabrick	20	8/31	ICP/0600	ICP/2200
C-33	CRW2 Dust Busters Crew 15	Hazen-Baker	20	9/1	ICP/0600	ICP/2200
O-92	FMOD - White Horse Forestry, Inc.	O'Rielly	2	9/3	ICP/0600	ICP/2200
O-98	FMOD Brothers Fire LLC	Rosander	2	8/30	ICP/0600	ICP/2200
O-99	FMOD-Swedberg Contracting Corp	Hileman	2	9/3	ICP/0600	ICP/2200
E-156	ENG6 Inland Forest Mgt.	Radcliffe	3	8/29	ICP/0600	ICP/2200
E-1	DZR2 Fousts INC N0054ZR2	Jones	1	9/7	ICP/0600	ICP/2200
E-78	EXC Fousts INC	Unruh	1	9/8	ICP/0600	ICP/2200
E-184	WTT2 Utah Fire	Justice	2	9/17	ICP/0600	ICP/2200
E-182	WTS2 Sommers Contracting	Sommers	1	8/31	ICP/0600	ICP/2200
E-183	WTS2 Jared Lewis	Lewis	1	9/7	ICP/0600	ICP/2200
E-130	WTS2 Richardson Tree Care 418408	Richardson	1	9/7	ICP/0600	ICP/2200
E-7	GRD1 Foust Inc. L00652	Kramer	1	9/3	ICP/0600	ICP/2200
E-25	HETF Akre Logging Akre 1	Akre	6	8/31	ICP/0600	ICP/2200
E-60	DUMP Joe Hester Logging	Irvine	1	9/4	ICP/0600	ICP/2200
E-61	FRNT Joe Hester Logging	Heffener	1	9/4	ICP/0600	ICP/2200
E-212	Chipper	Schopp	3	9/6	ICP/0600	ICP/2200
E-68	LOGL Tracked Log Loader	Hester	2	9/6	ICP/0600	ICP/2200
7. Control Operations: Task - Mop-up, patrol, and secure fire lines utilizing full range of suppression actions throughout the Division. Purpose - To prevent fire spread outside of current fire control lines. End State - Fire spread is limited to the north and east of FSR206 and Hayden Creek road.						
8. Special Instructions: Secure fire-line from the heal to north to division break. Utilize field maps for drop points, safety zones, and potential helispots. Ensure that comms are functional throughout the entire division. Maintain Situational Awareness around heavy equipment operations. Ensure all fire lines have established water-bars.						
Communications Summary						
Channel	Function	RX Frequency	RX Tone		TX Frequency	TX Tone
3 TAC 3	TAC	168.6000 N	110.9		168.6000 N	110.9
7 MT MONUMENT	CMD	170.0125 N	110.9		165.2500 N	110.9
8 CEDAR	CMD	170.9750 N	110.9		168.7000 N	110.9
13 A/G PRI	A/G	167.1250 N	NONE		167.1250 N	NONE
14 A/G SEC	A/G	166.6125 N	NONE		166.6125 N	NONE
16 AIRGUARD	AIRGUARD	168.6250 N	NONE		168.6250 N	110.9
Prepared by (Resource Unit Ldr) <i>Jessica Hollingsworth</i>				Date	Time	
				08/27/2023	1900	

DIVISION ASSIGNMENT LIST			1. Branch		2. Division DIV-Z (Page 2 of 2)	
3. Incident Name RIDGE CREEK			4. Operational Period From: 08/28/2023 0600 To: 8/28/2023 2200			
5. Operations Personnel						
Field Operations Section Chief		Matt Johnson Jason Klawinsky (T)		Branch Director		
Planning Operations Section Chief		Jeff Schardt Shawn Nagle Kris Wilson (T)		Division Supervisor		Heath Thomas 501-208-7077 Jeremy Joseph 586-489-6967
6. Resources Assigned this Period						
RO#	Strike Team/Task Force/ Resource Designator	Leader	# People	LWD	Drop Off PT./Time	Pick Up PT./Time
E-69	LOGL Akre Logging	Blake	2	9/3	ICP/0600	ICP/2200
E-71	LOGL Akre Logging	Randolph	2	9/5	ICP/0600	ICP/2200
E-73	LOGP Akre Logging	Alex	2	9/5	ICP/0600	ICP/2200
O-161	TFLD	Walker	1	8/30	ICP/0600	ICP/2200
O-163	TFLD	Berger	1	9/5	ICP/0600	ICP/2200
O-183	TFLD (T)	Wilson	1	9/7	ICP/0600	ICP/2200
O-170	HEQB	Courson	1	9/3	ICP/0600	ICP/2200
O-166	HEQB (T)	McGuire	1	9/2	ICP/0600	ICP/2200
O-137	SOFR	Bunce	1	8/28	ICP/0600	ICP/2200
O-138	SOFR(T)	Canning	1	8/29	ICP/0600	ICP/2200
O-210	EMTF	Dowd	1	9/6	ICP/0600	ICP/2200
E-80	RAT MESU Kootenai Fire & Rescue	Wagner	2	9/6	ICP/0600	ICP/2200
O-103	REMS MESU NIM Medical	Mason	4	8/30	ICP/0600	ICP/2200
E-155	AMB1 ALS Boundary	Rinella	2	9/4	ICP/0600	ICP/2200
7. Control Operations: Task - Mop-up, patrol, and secure fire lines utilizing full range of suppression actions throughout the Division. Purpose - To prevent fire spread outside of current fire control lines. End State - Fire spread is limited to the north and east of FSR206 and Hayden Creek road.						
8. Special Instructions: Secure fire-line from the heal to north to division break. Utilize field maps for drop points, safety zones, and potential helispots. Ensure that comms are functional throughout the entire division. Maintain Situational Awareness around heavy equipment operations. Ensure all fire lines have established water-bars.						
9. Division/Group Communication Summary						
Communications Summary						
Channel	Function	RX Frequency	RX Tone		TX Frequency	TX Tone
3 TAC 3	TAC	168.6000 N	110.9		168.6000 N	110.9
7 MT MONUMENT	CMD	170.0125 N	110.9		165.2500 N	110.9
8 CEDAR	CMD	170.9750 N	110.9		168.7000 N	110.9
13 A/G PRI	A/G	167.1250 N	NONE		167.1250 N	NONE
14 A/G SEC	A/G	166.6125 N	NONE		166.6125 N	NONE
16 AIRGUARD	AIRGUARD	168.6250 N	NONE		168.6250 N	110.9
Prepared by (Resource Unit Ldr(t)) <i>Jessica Hollingsworth</i>				Date 08/27/2023	Time 1900	

DIVISION ASSIGNMENT LIST			1. Branch		2. Division	
3. Incident Name RIDGE CREEK			4. Operational Period From: 08/28/2023 0600 To: 8/28/2023 2200			
5. Operations Personnel						
Field Operations Section Chief		Matt Johnson Jason Klawinsky (T)		Branch Director		
Planning Operations Section Chief		Jeff Schardt Shawn Nagle Kris Wilson (T)		Division Supervisor		Jared Nobles 352-817-6915 Todd Bennett (T) 864-429-6058
6. Resources Assigned this Period						
RO#	Strike Team/Task Force/ Resource Designator	Leader	# People	LWD	Drop Off PT./Time	Pick Up PT./Time
E-57	ENG6 Castle Mountain 6 C19623	Cork	3	9/8	ICP/0600	ICP/2200
E-158	ENG6 Flame Chasers	Manyhides	3	8/31	ICP/0600	ICP/2200
E-172	ENG6 Daniel Martin 512150	Martin	3	8/31	ICP/0600	ICP/2200
E-173	ENG6 Days LLC	Guerra	3	8/30	ICP/0600	ICP/2200
E-175	ENG6 Fire Control Resources	Marsalis	3	8/31	ICP/0600	ICP/2200
E-179	ENG Mervin Bishop C83845	Kirkaldie	3	9/1	ICP/0600	ICP/2200
E-180	ENG6 Mervin Bishop A98810	Lamebull	3	9/1	ICP/0600	ICP/2200
E-181	ENG6 Mervin Bishop C84111	Winfree	3	9/1	ICP/0600	ICP/2200
E-174	ENG6 Starkcorp Inc. B40745	Stark	3	9/2	ICP/0600	ICP/2200
E-178	ENG6 Mervin Bishop D36735	Haakanson	3	9/1	ICP/0600	ICP/2200
O-204	STEN	McAhren	1	9/2	ICP/0600	ICP/2200
O-199	TFLD	Teague	1	9/1	ICP/0600	ICP/2200
O-223	AEMF	Haas	1	9/6	ICP/0600	ICP/2200
7. Control Operations: Task - Identify, Implement and coordinate structure protection needs with fire resources and interagency cooperators for protection of structures within the fire area. Purpose - Ensure the development, and prioritization of a cohesive strategy to implement an adequate response for structure protection needs. End State - Structures are protected from the Fire impacts and future plans have been developed.						
8. Special Instructions: Coordinate with cooperators to build a strategic assessment of the surrounding communities. Identify trigger points for engagement and disengagement of structure protection resources. Maintain a presence and ensure equipment is operational in Trapper Creek and Nunn Rd areas. Ensure all fire lines have established water-bars.						
9. Division/Group Communication Summary						
Communications Summary						
Channel	Function	RX Frequency	RX Tone	TX Frequency	TX Tone	
4 TAC 4	TAC	166.7250 N	110.9	166.7250 N	110.9	
7 MT MONUMENT	CMD	170.0125 N	110.9	165.2500 N	110.9	
8 CEDAR	CMD	170.9750 N	110.9	168.7000 N	110.9	
13 A/G PRI	A/G	167.1250 N	NONE	167.1250 N	NONE	
14 A/G SEC	A/G	166.6125 N	NONE	166.6125 N	NONE	
16 AIRGUARD	AIRGUARD	168.6250 N	NONE	168.6250 N	110.9	
Prepared by (Resource Unit Ldr) <i>Jessica Hollingsworth</i>				Date 08/27/2023	Time 2030	

DIVISION ASSIGNMENT LIST			1. Branch		2. Division IA Group	
3. Incident Name RIDGE CREEK			4. Operational Period From: 08/28/2023 0600 To: 8/28/2023 2200			
5. Operations Personnel						
Field Operations Section Chief		Matt Johnson, Jason Klawinsky (T)		Branch Director		
Planning Operations Section Chief		Jeff Schardt, Shawn Nagle, Kris Wilson (T)		Task Force Leader		Samuel Daugherty
6. Resources Assigned this Period						
RO#	Strike Team/Task Force/ Resource Designator	Leader	# People	LWD	Drop Off PT./Time	Pick Up PT./Time
Local	CRW Coeur d'Alene River	Hill	16	NA	ICP/0600	ICP/2200
Local	ENG6 IPFID 641	White	4	8/30	ICP/0600	ICP/2200
E-157	ENG6 Windswept Wildfire	Grayson	3	8/31	ICP/0600	ICP/2200
E-159	ENG6 DaRoche	Daroché	3	8/30	ICP/0600	ICP/2200
7. Control Operations: TASK - Respond to new fire starts within TFR initial attack area. PURPOSE - Suppress new fire starts within the TFR initial attack area. END STATE - New fire starts are suppressed in initial attack.						
8. Special Instructions: Assist divisions with resource needs when able. Ensure all fire lines have established water-bars. Serve as IA resource under the Ridge Creek TFR and forest service land adjacent to. Be ready to break away from incident tasks as needed for IA. *** Special Note: IA Repeaters (channels 9, 10, 11) are for use outside of TFR ONLY. ***						
9. Division/Group Communication Summary						
Communications Summary						
Channel	Function	RX Frequency	RX Tone	TX Frequency	TX Tone	
6 FIRE TAC	TAC	168.7250 N	107.2	168.7250 N	107.2	
7 MT MONUMENT	CMD	170.0125 N	110.9	165.2500 N	110.9	
8 CEDAR	CMD	170.9750 N	110.9	168.7000 N	110.9	
9 FS-LTL GARD	IA	169.9250 N	107.2	165.5625 N	156.7	
10 FS-MICA	IA	169.9250 N	107.2	165.5625 N	167.9	
11 FS-MONUMENT	IA	169.9250 N	107.2	165.5625 N	131.8	
13 A/G PRI	A/G	167.1250 N	NONE	167.1250 N	NONE	
14 A/G SEC	A/G	166.6125 N	NONE	166.6125 N	NONE	
16 AIRGUARD	AIRGUARD	168.6250 N	NONE	168.6250 N	110.9	
Prepared by (Resource Unit Ldr) <i>Jessica Hollingsworth</i>				Date 08/27/2023	Time 2030	

HEALTH AND SAFETY MESSAGE

SAFETY starts with *YOU*

We are ALL accountable for SAFE behaviors

INCIDENT: **Ridge Creek Fire**

DATE: August 28, 2023

Major Hazards and Risks: Driving, Hazard Trees, and Heavy Equipment

Hazard Trees: *Work is shifting into new areas of the fire. Check these new areas for snags and mitigate them before engaging in work. Some of these snags are not visible from roads but could easily reach you if they fall.*

Driving: *New work assignments may take you on new roads with hazards you have not seen before. Some of the incident roads are narrow with limited visibility and few pull-outs. Be sure to contact Division Sup before entering their Division to ensure road is clear before proceeding. Adjust your driving for smoke, dust and traffic. Watch out for wildlife and livestock.*

Heavy Equipment: *Dozers, Excavators, feller-bunchers, and skidders are working on this incident. Don't approach heavy equipment until you are certain they have seen you and signaled for you to continue. Give them sufficient space on roads and in work areas.*



3. SAFETY ZONES AND ESCAPE ROUTES
NOT IDENTIFIED

Communicable Diseases

Camp situation brings a lot of people together in close quarters. We share a lot of air, surfaces and places.

Let's not share diseases. Wash your hands often and use hand sanitizer, especially before entering the food area and before leaving the latrine area.

Safety Officers: Buddy Kelley, Paul Churchill, Larry Holsomback and Steve Gray (T)

AIR OPERATIONS SUMMARY 220		Prepared By: Tim Elder	Prepared: August 27, 2023		Prepared Time: 1600 hrs.	
INCIDENT NAME: Ridge Creek Fire		OPERATIONAL PERIOD August 28, 2023	START TIME 0800	END TIME 2000	SUNRISE 0600	SUNSET 1935

REMARKS -All aircraft orders thru Air Attack if on scene, otherwise thru AOB -Large Electric Transmission Line through center of fire area -Retardant restricted in pre-designated avoidance areas and Chilco Trail ridge to the NE	MEDICAL RESPONSE AIRCRAFT * Follow Medical Plan ICS-206 *	TFR Ridge Creek 3/1108 8,000 feet MSL. 0800 to 2200 Daily Freq. 119.15
---	---	---

PERSONNEL	NAME	PHONE #	FREQUENCIES	AM	FM	FIXED-WING Avail/ Type/ Make-Model/ N#/ Base
AOBD	Tim Elder	863-243-1438 tim_elder@firenet.gov	A/A PRI	119.150		ATGS Platforms: N690CP – AA690 – Assigned to Incident N76WA– AA115 – Region Preposition
ASGS	Nick Holschbach	406-925-1737 nicholas.holschbach@usda.gov	A/A SEC	127.200		F/W Bases: Coeur d’Alene (KCOE)
ASGS (T)	Tim Lanterman	386-292-4049 timothy.lanterman@usda.gov	A/G PRI		167.1250	R/W Bases: Coeur d’Alene (KCOE) Sandpoint (KSZT)
HEBM	Josh Bardwell	903-238-3453 jrbardwell@ymail.com	A/G SEC		166.6125	
ATGS (AA690)	Justin Cutler	775-315-6113 jhcutter@blm.gov	A/G Marine (Hayden Lake)		169.5000	
ATGS T (AA690)	Ian McQuery	925-212-1043 imcqueary@blm.gov	KCOE Tower	120.125		Air Tankers LATs – T-132 Scoopers – SEATs – FB-205, FB-206, FB-217, FB-219
ATGS (AA104)	Mike Bagan	208-446-6770 michael.bagan@usda.gov	KCOE Ground	127.000		

HELICOPTERS

FAA N#	TY	MAKE/ MODEL	BASE	START	AVAIL	REMARKS	FAA N#	TY	MAKE/MODEL	BASE	START	AVAIL	REMARKS
ASSIGNED TO THE INCIDENT													
N357KA	1	K-MAX	COE	0800	0900	Bucket							
REGION PREPOSITION AVAILABLE ON REQUEST													
N561AJ	1	CH-47	COE	0800	0900	Bucket	N214B	1	B214	Sandpoint	0800	0900	Bucket
N214KA	2	B212	COE	0800	0900	Bucket	N28HX	2	B205+	Sandpoint	0800	0900	Bucket/Rappel
N102RF	3	AS350B2	COE	0800	0900	Bucket/Recon							
N777TD	3	B407	COE	0800	0900	Bucket/Recon							

Controlled Unclassified Information/Basic

ICS 205

INCIDENT RADIO COMMUNICATIONS PLAN			Incident Name RIDGE CREEK			Date/Time Prepared: 8/27/2023 / 1630		Operational Period Date/Time From: 8/28/2023 / 0600 To: 8/28/2023 / 2200		
Ch #	Function	Channel Name/Trunked Radio System Talkgroup	Assignment	RX Freq N or W	RX Tone/NAC	TX Freq N or W	Tx Tone/NAC	Mode	Remarks	
1	TACTICAL	TAC 1	DIV. A / E	168.0500 N	110.9	168.0500 N	110.9	A	HISTORIC DIV. A	
2	TACTICAL	TAC 2	DIV. K	168.2000 N	110.9	168.2000 N	110.9	A		
3	TACTICAL	TAC 3	DIV. Z	168.6000 N	110.9	168.6000 N	110.9	A		
4	TACTICAL	TAC 4	STRUCTURE	166.7250 N	110.9	166.7250 N	110.9	A		
5	TACTICAL	TAC 5	DIV. A / E	166.7750 N	110.9	166.7750 N	110.9	A	HISTORIC DIV. E	
6	TACTICAL	FIRE TAC	IA	168.7250 N	107.2	168.7250 N	107.2	A	IPNF FIRE TAC / INITIAL ATTACK	
7	COMMAND	MT MONUMENT	ALL DIVISIONS	170.0125 N	110.9	165.2500 N	110.9	A	LINKED COMMAND	
8	COMMAND	CEDAR	ALL DIVISIONS	170.9750 N	110.9	168.7000 N	110.9	A	LINKED COMMAND	
9	IA	FS-LTL GARD	IA	169.9250 N	107.2	165.5625 N	156.7	A	IA – OUTSIDE TFR	
10	IA	FS-MICA	IA	169.9250 N	107.2	165.5625 N	167.9	A	IA – OUTSIDE TFR	
11	IA	FS-MONUMENT	IA	169.9250 N	107.2	165.5625 N	131.8	A	IA – OUTSIDE TFR	
12	AIR TO GROUND	A/G MARINE	MARINE	169.5000 N	NONE	169.5000 N	NONE	A	SCOOPER COORDINATION	
13	AIR TO GROUND	A/G PRI	ALL DIVISIONS	167.1250 N	NONE	167.1250 N	NONE	A	AIR TO GROUND PRIMARY	
14	AIR TO GROUND	A/G SEC	ALL DIVISIONS	166.6125 N	NONE	166.6125 N	NONE	A	AIR TO GROUND SECONDARY	
15	MEDIVAC	EMS	ALL DIVISIONS	155.2800 N	NONE	155.2800 N	156.7	A	AIR EVAC COORDINATION	
16	AIR GUARD	AIRGUARD	ALL DIVISIONS	168.6250 N	NONE	168.6250 N	110.9	A	AIR GUARD	
5. Prepared by: (Communications Unit) Dave Radzivil, COML David Radzivil				Digitally signed by David Radzivil DN: cn=David Radzivil, o=ou, email=dradzivil@gmail.com, c=US Date: 2023.08.27 21:00:57 -0400'		Incident Location: ID-IPF County/State: KOOTENAI COUNTY, ID		Latitude / Longitude: 47° 57.9998', -116° 34.9786'		

The convention calls for frequency lists to show four digits after the decimal place, followed by either an "N" or a "W", depending on whether the frequency is narrow or wide band. Mode refers to either "A" or "D" indicating analog or digital (Project 25).

***** Special Instructions: Use Human Repeater When Necessary.**

To initiate an IWI, contact RIDGE CREEK COMMUNICATIONS on "CEDAR" OR "MONUMENT" (Channel "7" OR "8")

RIDGE CREEK COMMUNICATIONS - Cell (208) 891-6392


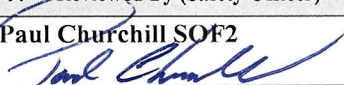
MEDICAL PLAN (ICS 206 WF)

Controlled Unclassified Information//Basic

1. Incident/Project Name				2. Operational Period				
Ridge Creek Fire				Date/Time 0600 – 2200		8/28/2023 to 8/28/2023		
3. Ambulance Services								
Name	Complete Address	Phone & EMS Frequency		Advanced Life Support (ALS) Yes No				
Timber Lake Fire Protection	5984 E Highway 54 Athol, ID non-emergency: (208) 683-3333	911		<input type="checkbox"/> <input checked="" type="checkbox"/>				
Kootenai County Fire Rescue	1590 E Seltice Way, Post Falls, ID non-emergency # (208)666-5676	911		<input checked="" type="checkbox"/> <input type="checkbox"/>				
4. Air Ambulance Services								
Name	Phone	Type of Aircraft & Capability						
Life Flight	(208)772-3283 USFS dispatch	Hayden or Sandpoint ID ; goes through USFS dispatch to request and coordinate (note min LZ 100'x 100' days)						
Short Haul or Hoist/Agency Helo	(208)772-3283 USFS dispatch	USFS Coeur d Alene Dispatch Note – A2G for helicopter evac is Ch 15 ‘EMS’						
5. Hospitals								
Name Complete Address	GPS Datum – WGS 84 Coordinate Standard Degrees Decimal Minutes	Travel Time Air Gnd		Phone	Helipad Yes No		Level of Care Facility	
Kootenai General Hospital 2003 Kootenai Health Way, Coeur d’Alene, ID	Lat: 47 45.658 N	15 min	30 min	208-625-4000	<input checked="" type="checkbox"/>	<input type="checkbox"/>	Level 2 Trauma	
	Long: 116 47 41.684W							
Bonner General Hospital 520 N Third Ave, Sandpoint, ID	Lat: 48 16.650	15 min	60 min	208-263-1441	<input checked="" type="checkbox"/>	<input type="checkbox"/>	Level 4 Trauma	
	Long: 116 32.92							
Sacred Heart Medical 101 W Eighth Ave, Spokane, WA	Lat: 47 38.500	25 min	120 min	509-474-3131	<input checked="" type="checkbox"/>	<input type="checkbox"/>	Level 2 Trauma	
	Long: 117 24.800							
Harborview Medical Center Seattle, WA	Lat: 47 36.238	120 min	300 min	206-744-3074 206-744-5735 Burn center #	<input checked="" type="checkbox"/>	<input type="checkbox"/>	Level 1 Trauma & Burn Center	
	Long: 122 19.461							
Northwest Urgent Care 7173 E Super 1 Loop Suite A Athol, ID Intersection of 54 &95	Lat: 47.950879 Long: -116.694570 (NO HELIPAD)		10 min	208-561-9970	<input type="checkbox"/>	<input checked="" type="checkbox"/>	Urgent care only Hours: 0800-1800 M-F 0800-1600 S-S	
6. Division Branch Group								
A/E		Area Location Capability						
		Resources assigned this period	RO#	Designator	Leader	# Crew	Phone	
			0-244	REMS Ranger MT Rescue	Lahti	4	(360) 908-3314	
			0-221	EMPF	Ratti	1	(775) 815-4217	
			0-224	EMTF	Roy	1	(707) 508-9620	
			0-171	EMPF Blacklands EMS Inc	Keys	1	(520) 395-6832	
			E-122	Amb1 ALS-ID88IN Idaho Falls FD FD#847	Wood	2	(208) 520-3695	
		EMS Responders & Capability:		ALS Ambulance, REMS, and single resource EMPF, EMTF				
Medical Emergency Channel:		Cedar Peak						
ETA for Ambulance to Scene:		Air : 30 min ground 10 min to former A/Z break						
Approved helispots		H 70: same as DP70, needs dust abatement, clear vehicles, type 3 only H 74: south DP73,type 1 capable H 90: perimeter near DP 95,dust abatement needed, type 3 only H 50: in the BLACK/fire interior, type 3 only H 65: along 206 road N, type 3 currently H 68 north of spike camp ,type 2						

MEDICAL PLAN (ICS 206 WF)

Controlled Unclassified Information//Basic

K	Resources assigned this period:	RO#	Designator	Leader	# Crew	Phone	
		0-172	EMPF North Forks Medics	Wallace	1	(406) 239-1811	
		0-174	EMPF Minuteman EMS	Kemmerer	1	(321) 750-1197	
		0-265	EMPF	Cisneros-Thorsvold	1	(541) 588-2314	
	EMS Responders & Capability:	Single resource EMPF's					
	Equipment Available at Scene:						
	Medical Emergency Channel	Cedar Peak					
ETA for Ambulance	Air : 30 min 45 min ground						
Approved Helispot Lat: Long:	H 44: Near DP 44, dust abatement needed, vehicles clear, type 2 H 48: type 3 currently						
Z	Resources assigned this period:	RO#	Designator	Leader	# Crew	Phone	
		0-210	EMTF	Dowd	1	(970) 231-1796	
		E-80	RAT MESU Kootenai Fire and Rescue	Wagner	2	(208) 659-3693	
		0-103	REMS MESU NIM Medical	Mason	4	(605) 545-4293	
	E-155	Amb1 ALS Boundary	Rinella	2	(208) 715-5038		
	EMS Responders & Capability:	REM, RAT, ALS Ambulance, single resource EMTF					
	Equipment Available on Scene:						
Medical Emergency Channel:	Cedar Peak						
ETA for Ambulance to Scene:	Air 30 min ground 10 min to K/Z break						
Approved Helispot:	H 1: Near ICP, two type2 or one type 1 H 10: Hayden Creek Staging, dust abatement needed, watch for FOD, type 1 H 36: private, no LUA, type 1 H 37: repeater site, type 3 only H 44: near DP44, dust abatement needed, vehicles cleared, type 2						
Structure Protection	Resources assigned this period:	RO#	Designator	Leader	# Crew	Phone	
		0-223	AEMF	Haas	1	(406) 579-2951	
	EMS Responders & Capability:	Single resource AEMT					
	Equipment Available on Scene:						
	Medical Emergency Channel:	MT Monument or Cedar Peak (varies by location)					
ETA for Ambulance to Scene:	Varies by location						
Approved Helispot:							
7. Prepared By (Medical Unit Leader)		8. Date/Time		9. Reviewed By (Safety Officer)		10. Date/Time	
Bart Walker MED1 		08/27/23 1650		Paul Churchill SOF2 		8/27/23 1700 8/27/23	

Ridge Creek Fire Contact List

Common Name	First Name	Last Name	Primary Phone	Common Name	First Name	Last Name	Primary Phone
INCIDENT COMMANDER	Deborah	Beard	850-524-9966	Operations			
INCIDENT COMMANDER	Marshall	Bentley	423-584-1682	OPERATIONS SECTION CHIEF	Matt	Johnson	870-415-0185
LIAISON OFFICER	Michael	Wright	970-819-2890	OPERATIONS SECTION CHIEF	Jason	Klawinsky	936-520-8827
LIAISON OFFICER	Jeremy	Edwardson	228-933-2585	OPERATIONS SECTION CHIEF	Jeffrey	Schardt	706-280-5498
PUBLIC INFORMATION OFFICER - V	Michelle	Burnett	803-920-6167	OPERATIONS SECTION CHIEF	Shawn	Nagle	662-231-4024
PUBLIC INFORMATION OFFICER - V	Ray	Butler	865-250-8980	OPERATIONS SECTION CHIEF	Kris	Wilson	918-314-7264
PUBLIC INFORMATION OFFICER - V	Brook	Smith	865-603-5217	OPERATIONS BRANCH DIRECTOR	Brian	Elam	336-467-7254
PUBLIC INFORMATION OFFICER - V	Lee	Williams	804-513-1645	AIR OPERATIONS BRANCH DIRECTOR	Timothy	Elder	863-243-1438
SAFETY OFFICER	Larry	Holsomback	706 280 4716	AIR SUPPORT GROUP SUPERVISOR	Nicholas	Holschbach	406-925-1737
SAFETY OFFICER	Buddy	Kelley	850-447-1344	AIR SUPPORT GROUP SUPERVISOR	Timothy	Lanterman	386-292-4049
SAFETY OFFICER	Paul	Churchill	843-259-9884	DIVISION SUPERVISOR (A/E)	Greg	Salansky	865-414-6461
SAFETY OFFICER	Danny	Gore	478-456-8516	DIVISION SUPERVISOR (A/E)	Jordan	Collier	765-913-0790
Plans				DIVISION SUPERVISOR (K)	David	Gregory	208-784-3711
PLANNING SECTION CHIEF	Carol	O'Bryan	903-263-8704	DIVISION SUPERVISOR (Z)	Heath	Thomas	501-208-7077
PLANNING SECTION CHIEF	Thomas	Barrett	478-550-6372	DIVISION SUPERVISOR (Z)	Jeremy	Joseph	586-489-6967
PLANNING SECTION CHIEF	Kevin	Curry	732-684-2999	DIVISION SUPERVISOR (Structure)	Jared	Nobles	352-817-6915
FIRE BEHAVIOR ANALYST	Kelly	Cagle	336-302-0343	DIVISION SUPERVISOR	Todd	Bennett	864-429-6058
INCIDENT METEROLOGIST	Ryan	Flieman	740-525-1697	HELIBASE MANAGER	Joshua	Bardwell	903-238-3453
INCIDENT METEROLOGIST	Krista	Carrothers	509-688-4753	Logistics			
DEMOBILIZATION UNIT LEADER	Jeffrey	DeMatteis	208-891-6074	LOGISTICS SECTION CHIEF	Steve	Weherley	850-691-5923
DEMOBILIZATION UNIT LEADER	Wendy	Christopher	208-571-0336	LOGISTICS SECTION CHIEF	David	McVay	850-381-1669
INCIDENT TECHNICAL SUPPORT SPECIALIST	John	Edwards	850-766-3393	LOGISTICS SECTION CHIEF	Timothy	Exline	727-243-4144
INCIDENT TECHNICAL SUPPORT SPECIALIST	Yarmir Diaz	Rohweder	936-219-9898	LOGISTICS SECTION CHIEF	Todd	Waller	501-337-6308
INCIDENT TECHNICAL SUPPORT SPECIALIST	Bridgette	Webb	662-202-6210	MEDICAL UNIT LEADER	Kurt	Gainer	304-704-2970
DOCUMENTATION UNIT LEADER - V	Lisa	Spieß	601-812-7819	MEDICAL UNIT LEADER	Curtis	Orde	307-399-7316
TRAINING SPECIALIST - V	Alton	Hoke	678-232-7107	MEDICAL UNIT LEADER	Bart	Walker	352-203-9191
TRAINING SPECIALIST - V	Lucas	Hunkler	912-464-7067	FACILITIES UNIT LEADER	Lester	Kaiser	620-382-6180
RESOURCE UNIT LEADER	Melonie	Sellers	601-508-8997	FACILITIES UNIT LEADER	Mark	Thornton	509-683-3746
RESOURCE UNIT LEADER - V	Jessica	Hollingsworth	601-966-0331	BASE CAMP MANGER	Kathleen	Paiva	775-527-4516
RESOURCE UNIT LEADER	Ethan	Robertson	678-552-7342	BASE CAMP MANGER (HUDLOW)	David	Brooks	303-495-4660
STATUS CHECK-IN RECORDER	Laura	Vann	404-626-7244	BASE CAMP MANGER (HUDLOW)	Tim	Crowell	270-836-6320
SITUATION UNIT LEADER	Clint	Roberts	601--408-4276	SUPPLY UNIT LEADER	Sandra	Rhodes	501-282-0085
SITUATION UNIT LEADER	Eric	Pullium	828-644-8966	RECEIVING/DISTRIBUTION MANAGER	Randall	Hamilton	606-344-9628
GIS SPECIALIST	Adam	Riley	952-240-3799	ORDERING MANAGER	Sherry	Kite	850-209-2150
GIS SPECIALIST	Katherine	Bronson	352-408-3695	FOOD UNIT LEADER	James	Lowe	540-529-0784
GIS SPECIALIST	Hester	Mallonee	662-426-2423	FOOD UNIT LEADER	Dan	Baker	719-205-0076
GIS SPECIALIST	Kayla	Parr	937-902-9193	COMMUNICATIONS UNIT LEADER	David	Radzivil	954-553-6553
Finance				GROUND SUPPORT UNIT LEADER	Brian	Truss	936-546-4338
FINANCE SECTION CHIEF	Jason	Gillis	912-314-9233	GROUND SUPPORT UNIT LEADER (HUDLOW)	Angela	Parrish	540-553-6356
FINANCE SECTION CHIEF	Marlene	Hudson	803-563-3277	EQUIPMENT MANGER	Doug	Stover	541-297-5902
FINANCE SECTION CHIEF	Reggie	Lanier Jr	912-314-1085				
TIME UNIT LEADER - V	Donna	Bentley	706-474-3216				
TIME UNIT LEADER	Brandon	Brown	423-557-3490				
COST UNIT LEADER	Stacey	Eaton	850-544-0438				
COST UNIT LEADER	Tom	Steele	770-363-3583				
COMPENSATION/CLAIMS UNIT LDR - V	Terri	McDonald	352-454-5385				

V - Virtual

Human Resource Message

The mission of the Gold Team is to safely, effectively and efficiently manage the Ridge Creek Fire by maintaining a team of skilled and productive personnel. During this incident we will strive to successfully complete our mission and achieve our objectives while creating a positive, work environment for all assigned incident personnel. Consumption of drugs that alter decision making abilities on the job, such as marijuana and alcohol, is prohibited. The Gold Team fully supports every assigned personnel's right to have a safe and enjoyable assignment. ANY form of harassment or discrimination will not be tolerated. All inappropriate behavior will be dealt with promptly. Disciplinary action and reporting back to an individual's home unit will be initiated as necessary.

Please report any incidents of inappropriate behavior to your supervisor or any member of the Gold Team

Debbie Beard, Incident Commander



Finance Message

THINGS TO REMEMBER

- IF YOU ARE ASSIGNED TO "DIVISION K", PLEASE NOTE THIS IN THE REMARKS ON YOUR CTR'S OR SHIFT TICKETS
- PLEASE ENSURE THAT YOUR CTR'S AND SHIFT TICKETS HAVE YOUR RESOURCE ORDER NUMBER and DATE

FOR ASSISTANCE WITH CLAIMS, PLEASE CONTACT TERRI MCDONALD AT terri_mcdonald@firenet.gov, or leave a voice mail at 352-454-5385.

2023.ridgecreek.finance@firenet.gov



ALL RESOURCES ARE WELCOME TO HAVE A IN-PERSON FINANCE DEMOB

But if you prefer remote Finance demob, please follow directions below

****** REMOTE DEMOB FOR HUDLOW SPIKE CAMP ******

ANY RESOURCES WANTING TO REMOTE DEMOB FROM HUDLOW SPIKE CAMP,
PLEASE SEE ITSS - JOHN EDWARDS, LOCATED ON SITE IN ITSS-YURK.
RESOURCES CAN DEMOB ANYTIME BETWEEN 1000 TO 1400.

****** REMOTE DEMOB FOR BASE CAMP ******

PLEASE SCAN THE QR CODE ABOVE. SEND AN EMAIL WITH YOUR CONTACT INFORMATION REQUESTING REMOTE DEMOB. A FINANCE SPECIALIST WILL CALL YOU BACK AND WALK YOU THROUGH THE PROCESS.

Limited contact Demob process is Available

- **Note your demob date listed in the IAP. Inform your incident supervisor if that date is wrong, so they can contact demob/checkin to update.**
- Crew Swaps - If you have relief operators replacing operators, use the QR code below. We will adjust the last work day for that equipment.
- Air Travel – Use the QR code below or call demob to schedule a flight. Please do this at least 3 days before your demob date. You may need to plan on an early departure on your last work day for an RON at your departure airport in order to travel on your DEMOB date.
- Driving home – Use the QR code below to provide travel info before leaving ICP to travel home. **We need you to provide your ETD/ETA, and RON city, if taking more than one day to drive home.**

Steps to take when checking out during Demob, no checkout sheet required:

Feel free to stop by any Section or Unit if you need assistance.

1. All CTR and Shift Tickets should be turned in before initiating the demob process.
2. Return all property to Supply and/or Communications; they will notify demob that you returned all items.
3. Have equipment inspected at Ground Support and submit inspection form to finance as required.
4. If you are a trainee see the Training Message to close out with the Training Specialist..
5. FINALIZE your OF-288/OF-286 with Finance; they will notify demob that you are cleared.
6. Go through Weed Wash on your way out of camp, they will notify demob, no need to return to ICP. Be sure to submit travel info using QR code below.

Demob Contact: 208-891-6074

Email: 2023.ridgecreek.demob@firenet.gov

Air Travel



Driving



Crew Swap



Tentative Release Schedule

08/28/2023

Equipment

E-36	PUP1	SPEARS, BRENDA
E-67	WTS2	SEVEN BAKERS
E-124	MBM2	WEST WOOD

Overhead

O-41	EQPM	MALSON, AARON JESSE
O-71	EQPM	MCELREATH, PATRICK M
O-118	FACL	KENYON, ANDREW J
O-136	SOFR	CARPENTER, TIMOTHY J
O-150	SEC1	DANCE, JERRY D
O-153	INCM	BARKER, JENNIFER

08/29/2023

Crews

C-14	CRWC	SAWC
C-22	CRW2	IRON MOUNTAIN FIREFIGHTING
C-25	CR2I	STANDING ROCK

Overhead

O-44	BCMG	CROWELL, TIM S
O-137	SOFR	BUNCE, CRAIG
O-139	SOFR	O'BRIEN, CHRISTOPHER S
O-140	FACL	KAISER, LESTER W
O-155	SEC1	FRAZIER, JOSHUA SHANE
O-157	SECM	NGUYEN, JEREMY
O-185	STEN	BELMONT, BRAD A
O-206	SECG	BIRD, STEVE

08/30/2023

Crews

C-23	CRW2	REFORESTATION
C-24	CRWC	NEZ PERCE TRIBE

Equipment

E-156	ENG6	INLAND FOREST MANAGEMENT
E-160	ENG6	C2M2

Overhead

O-138	SOFR	CANNING, DAVID PAUL
O-162	TFLD	DAUGHERTY, SAMUEL FOSTER
O-171	EMPF	BLACK LAND SEMS
O-172	EMPF	NORTH FORK MEDICS
O-173	EMPF	CARBON CTY FIRE
O-174	EMPF	MINUTEMAN
O-197	TFLD	COBB, PAUL FIELDS

Training Message

Coaching



VS

Evaluating



Coaching

Focuses on the individual to develop greater expertise in his or her job. A coach provides immediate instructions and feedback on job tasks; before, during, and after the task is being performed.

Evaluating

Focuses on determining what level the individual performing the task is at. Evaluators only provide feedback after the task has been performed.

Evaluation sessions **NOT Coaching** sessions are recorded in Task Books.

If you are a trainee or working on a position Task Book (PTB) be sure to Check-in and Check-out with one the Incident Training Specialist!

Lucas Hunkler, TNSP(t) 912-464-7067 or Al Hoke, TNSP 678 232-7107

Check-in

Ridge Creek Fire (QG9D) Gold
Team CIMT Incident Trainee Exit
Interview



Check-out

Incident Trainee Data Form Ridge
Creek Fire (QG9D) Gold Team
CIMT





Ridge Creek Fire Public Information

We are now working remotely! Please feel free to contact us at: **208-953-7022**

Or email your photos/questions to:



2023.ridgecreek@firenet.gov

The Gold Team is still running a photo contest. A Gold Team Challenge Coin will be presented at the morning briefing on 8/29 for best photo! Include with your phone WHERE it was taken, who took it, who is photographed and be sure everyone is wearing PPE.



Ridge Creek

Documentation Process



1. Name files in accordance with the standardized NWCG naming conventions:

{DocType}_{Version}_{Date}_{IncidentNumber}

EXAMPLE: UNIT DAILY LOGS – ICS 214

214_SpiessLisa_20230825_000447

EXAMPLE: GENERAL MESSAGES – ICS 213

213_DOCL_Spiess_20230825_000447

***Reminder: For 213's, use SENDER's UNIT NAME and SENDER's Last Name if known**

2. Upload your files in one of two ways:

A. Drop them daily into the [eDoc INBOX](#) in Teams, General Channel files, or use [SharePoint](#) location.

B. Email them daily to 2023.ridgecreek.docs@firenet.gov

All documentation will be filed electronically in TEAMS. There are no paper copies or paper doc boxes. If you need to scan files, there is one available in the Plans room at ICP. Not sure which documents are Permanent Records? Check out page 4 of [PMS 277](#).
If you have questions about what to file or how, please reach out!

Need help? Ask!

Lisa Spiess – Virtual DOCL-t

lisa_spiess@firenet.gov or 601-812-7819

You can also catch me in Teams chat!



Infectious Disease Prevention Reminders

Protect your best resource...your health!

1. **Wash your hands!** This is probably the single most effective action you can take to protect from many diseases including Covid-19, the flu, the common cold, stomach illnesses/upset. Use soap and hot water whenever possible and wash for at



least 20 seconds. If you can't get access to soap and water, hand sanitizer remains your next choice. Note that it may not be as effective as soap and water especially if your hands are grimy. Try to flush away most of the grime with water first before using hand sanitizer. Wash or sanitize frequently.

2. **Maintain distance.** While it can be difficult to implement, it's still a good practice to maintain "social distancing". While most diseases are spread from contact to hand then to mouth or eyes, many are still spread through aerosolized droplets. Adding some distance can help!



3. **Wipe down surfaces.** Many diseases can live on surfaces for some time. Frequently wipe contact surfaces with disinfecting wipes and allow surfaces to dry.

4. **Cough or Sneeze into your elbow,** not into your hands. If you forget, be sure to immediately wash your hands.

5. **Consider wearing a mask,** especially if you feel ill.

6. **Take good care of yourself.** Rest when able, hydrate, eat well, and overall support your immune system!

If you feel sick, please self-isolate and notify your immediate supervisor.

LOGISTICS

Laundry Procedures

Separate your laundry by Nomex and Regular clothes and place in separate bags with labels.

Bags and labels will be provided at the drop off location in Supply.







Fill out a laundry slip, Red for Nomex and White for regular laundry.

Place slip in bag with laundry and drop it off at Supply.

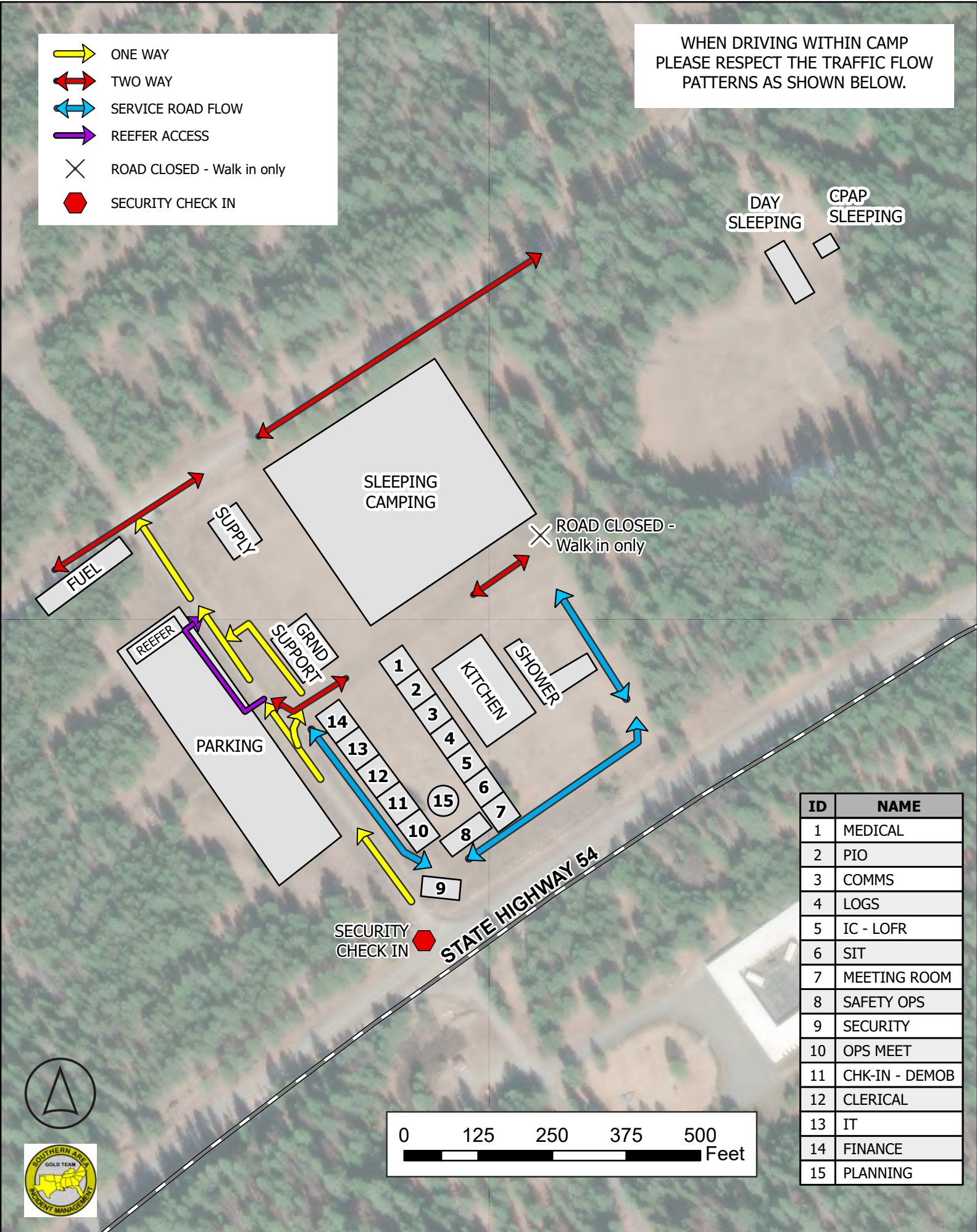
Laundry dropped by 0900 will be ready in 48 hours.



If you are within 72 hours of Demob, DO NOT TURN IN YOUR LAUNDRY!

-  ONE WAY
-  TWO WAY
-  SERVICE ROAD FLOW
-  REEFER ACCESS
-  ROAD CLOSED - Walk in only
-  SECURITY CHECK IN

WHEN DRIVING WITHIN CAMP PLEASE RESPECT THE TRAFFIC FLOW PATTERNS AS SHOWN BELOW.



DAY SLEEPING
CPAP SLEEPING

SLEEPING CAMPING

ROAD CLOSED - Walk in only

FUEL

SUPPLY

REEFER

GRND SUPPORT

PARKING

14 13 12 11 10 9

1 2 3 4 5 6 7

KITCHEN

SHOWER

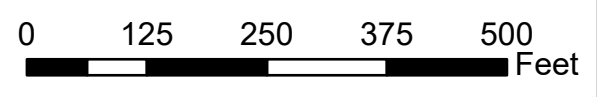
15

8

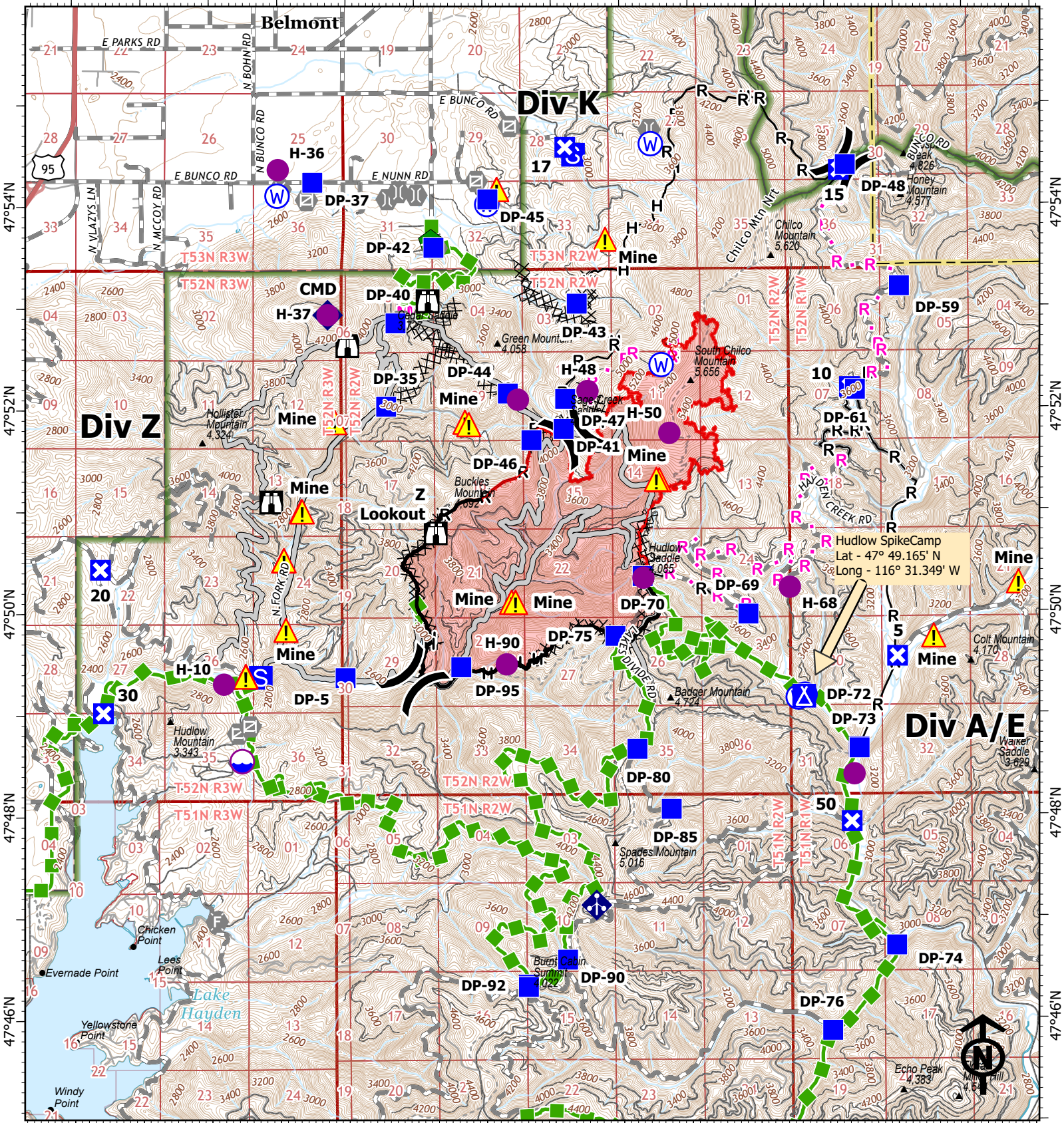
STATE HIGHWAY 54

SECURITY CHECK IN

ID	NAME
1	MEDICAL
2	PIO
3	COMMS
4	LOGS
5	IC - LOFR
6	SIT
7	MEETING ROOM
8	SAFETY OPS
9	SECURITY
10	OPS MEET
11	CHK-IN - DEMOB
12	CLERICAL
13	IT
14	FINANCE
15	PLANNING



116°42'W 116°40'W 116°38'W 116°36'W 116°34'W 116°32'W 116°30'W 116°28'W



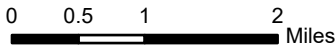
IAP

RIDGE CREEK

ID-IPF-000447

08/28/2023 Day

4359 acres at 8/26/2023 0415 hrs
Acres from IR



- | | | | |
|--------------------|-----------------------------------|---------------------------------------|-------------------------------------|
| (X) Division Break | 🏠 Lookout | 📡 Repeater | 🟡 M Planned Mixed Construction Line |
| 📍 Dip Site | ⚠️ Value at Risk | ⚠️ Hazard | 🟡 R Planned Road as Line |
| 🟡 Helispot | 🚪 Gate | 📍 Water Source | 🟡 Access or Improved Road |
| 🟡 Drop Point | 🚒 Fire Station | 🚧 Completed Dozer Line | 🟡 Escape Route |
| 🟡 Closure | 🌉 Bridge | 🟡 H Completed Hand Line | 🟡 Contained |
| 🟡 Camp | 🌊 Water Development or Draft Site | 🟡 M Completed Mixed Construction Line | 🟡 Uncontained |
| 🟡 Staging Area | 🟡 Repair Point | 🟡 R Completed Road as Line | 🟡 Wildfire Daily Fire Perimet |
| | 🟡 Mobile Weather Unit | 🟡 H Planned Hand Line | |



MEDICAL PLAN (ICS 206 WF)

Controlled Unclassified Information//Basic

Medical Incident Report

FOR A NON-EMERGENCY INCIDENT, WORK THROUGH CHAIN OF COMMAND TO REPORT AND TRANSPORT INJURED PERSONNEL AS NECESSARY.

FOR A MEDICAL EMERGENCY: IDENTIFY ON-SCENE INCIDENT COMMANDER BY NAME AND POSITION AND ANNOUNCE "MEDICAL EMERGENCY" TO INITIATE RESPONSE FROM IMT COMMUNICATIONS/DISPATCH.

Use the following items to communicate situation to communications/dispatch.

1. CONTACT COMMUNICATIONS / DISPATCH (Verify correct frequency prior to starting report)

Ex: "Communications, Div. Alpha. Stand-by for Emergency Traffic."

2. INCIDENT STATUS: Provide incident summary (including number of patients) and command structure.

Ex: "Communications, I have a Red priority patient, unconscious, struck by a falling tree. Requesting air ambulance to Forest Road 1 at (Lat./Long.) This will be the Trout Meadow Medical, IC is TFLD Jones. EMT Smith is providing medical care."

Severity of Emergency / Transport Priority	<input type="checkbox"/> RED / PRIORITY 1 Life or limb threatening injury or illness. Evacuation need is IMMEDIATE Ex: Unconscious, difficulty breathing, bleeding severely, 2° – 3° burns more than 4 palm sizes, heat stroke, disoriented. <input type="checkbox"/> YELLOW / PRIORITY 2 Serious Injury or illness. Evacuation may be DELAYED if necessary. Ex: Significant trauma, unable to walk, 2° – 3° burns not more than 1-3 palm sizes. <input type="checkbox"/> GREEN / PRIORITY 3 Minor Injury or illness. Non-Emergency transport Ex: Sprains, strains, minor heat-related illness.
Nature of Injury or Illness & Mechanism of Injury	Brief Summary of Injury or Illness (Ex: Unconscious, Struck by Falling Tree)
Evacuation Request	Air Ambulance / Short Haul/Hoist Ground Ambulance / Other
Patient Location	Descriptive Location & Lat. / Long. (WGS84)
Incident Name	Geographic Name + Medical (Ex: Trout Meadow Medical)
On-Scene Incident Commander	Name of on-scene IC of Incident within an Incident (Ex: TFLD Jones)
Patient Care	Name of Care Provider (Ex: EMT Smith)

3. INITIAL PATIENT ASSESSMENT: Complete this section for each patient as applicable (start with the most severe patient)

Patient Assessment: See IRPG PAGE 106

Treatment:

4. EVACUATION PLAN:

Evacuation Location (if different): (Descriptive Location (drop point, intersection, etc.) or Lat. / Long.) Patient's ETA to Evacuation Location: Click or tap here to enter text.

Helispot / Extraction Site Size and Hazards:

5. ADDITIONAL RESOURCES / EQUIPMENT NEEDS:

Example: Paramedic/EMT, crews, immobilization devices, AED, oxygen, trauma bag, IV/fluid(s), splints, rope rescue, wheeled litter, HAZMAT, extrication

6. COMMUNICATIONS: Identify State Air/Ground EMS Frequencies and Hospital Contacts as applicable

Function	Channel Name/Number	Receive (RX)	Tone/NAC *	Transmit (TX)	Tone/NAC *
COMMAND					
AIR-TO-GRND					
TACTICAL					

7. CONTINGENCY: Considerations: If primary options fail, what actions can be implemented in conjunction with primary evacuation method? Be thinking ahead..

8. ADDITIONAL INFORMATION: Updates/Changes, etc.

REMEMBER: Confirm ETA's of resources ordered. Act according to your level of training. Be Alert. Keep Calm. Think Clearly. Act Decisively.